

Uncertainty Estimation with Deep Learning for Rainfall–Runoff Modelling

Daniel Klotz¹, Frederik Kratzert¹, Martin Gauch¹, Alden Keefe Sampson², Günter Klambauer¹, Sepp Hochreiter¹, and Grey Nearing³

¹Institute for Machine Learning, Johannes Kepler University Linz, Linz, Austria

²Upstream Tech, Natel Energy Inc.; Alameda, CA, USA

³Google Research, Mountain View, CA, USA

Correspondence: Daniel Klotz (klotz@ml.jku.at)

PREPRINT OF UNREVIEWED MANUSCRIPT

Abstract. Deep Learning is becoming an increasingly important way to produce accurate hydrological predictions across a wide range of spatial and temporal scales. Uncertainty estimations are critical for actionable hydrological forecasting, and while standardized community benchmarks are becoming an increasingly important part of hydrological model development and research, similar tools for benchmarking uncertainty estimation are lacking. We establish an uncertainty estimation benchmarking procedure and present four Deep Learning baselines, out of which three are based on Mixture Density Networks and one is based on Monte Carlo dropout. Additionally, we provide a post-hoc model analysis to put forward some qualitative understanding of the resulting models. Most importantly however, we show that accurate, precise, and reliable uncertainty estimation can be achieved with Deep Learning.

10 1 Introduction

A growing body of empirical results show that data-driven models perform well in a variety of environmental modelling tasks (e.g., Hsu et al., 1995; Govindaraju et al., 2000; Abramowitz, 2005; Best et al., 2015; Nearing et al., 2016, 2018). Specifically for rainfall-runoff modeling, approaches based on Long Short-Term Memory (LSTM; Hochreiter, 1991; Hochreiter and Schmidhuber, 1997; Gers et al., 1999) have been especially effective (e.g., Kratzert et al., 2019a, b, 2020).

15 The majority of machine learning (ML) and deep learning (DL) rainfall–runoff studies do not provide uncertainty estimates (e.g., Hsu et al., 1995; Kratzert et al., 2019b, 2020; Liu et al., 2020; Feng et al., 2020). However, uncertainty is inherent in all aspects of hydrological modeling and it is generally accepted that our predictions should account for this (Beven, 2016). The hydrological sciences community has put substantial effort into developing methods for providing uncertainty estimations around traditional models, and similar effort is necessary for DL models like LSTMs.

20 Currently there exists no single, prevailing method for obtaining distributional rainfall–runoff predictions. Many, if not most, methods take a basic approach whereby a deterministic model is augmented with some uncertainty estimation strategy. This includes, for example, ensemble-based methods, where the idea is to define and sample probability distributions around different model inputs and/or structures (e.g., Li et al., 2017; Demargne et al., 2014; Clark et al., 2016), but also comprises Bayesian (e.g., Kavetski et al., 2006) or pseudo-Bayesian (e.g., Beven and Binley, 2014) methods, and post-processing methods
25 (e.g., Shrestha and Solomatine, 2008; Montanari and Koutsoyiannis, 2012), etc. In other words, most classical rainfall–runoff models do not provide direct estimates of their own predictive uncertainty; instead, such models are used as a part of a larger framework. There are some exceptions to this, for example methods based on stochastic partial differential equations, which actually use stochastic models but generally require assigning sampling distributions a priori (e.g., a Wiener process). These are common, for example, in hydrologic data assimilation (e.g., Reichle et al., 2002). The problem with these types of approaches
30 is that any distribution that we could possibly assign is necessarily degenerate, resulting in well-known errors and biases in estimating uncertainty (Beven et al., 2008).

In contrast, it is possible to fit DL models so that their own representations intrinsically support estimating distributions while accounting for strongly nonlinear interactions between model inputs and outputs. In this case, there is no requirement to fall back on deterministic predictions that would need to be sampled, perturbed, inverted, etc. Several approaches to uncertainty
35 estimation for DL haven been suggested (e.g., Bishop, 1994; Blundell et al., 2015; Gal and Ghahramani, 2016). Some of them have been used in the hydrological context. For example, Zhu et al. (2020) tested two strategies for using an LSTM in combination with Gaussian processes for drought forecasting. In one strategy, the LSTM was used to parameterize a Gaussian process, and in the second strategy, the LSTM was used as a forecast model with a Gaussian process post-processor. Gal and Ghahramani (2016) showed that Monte Carlo Dropout (MCD) can be used to intrinsically approximate Gaussian processes
40 with LSTMs, so it is an open question as to whether explicitly representing the Gaussian process is strictly necessary. Fang et al. (2019) used MCD for soil moisture modelling and reported a tendency to underestimate uncertainties. They also tested to extend the approach by accounting for the aleatoric uncertainty by estimating a Gaussian noise term (as proposed by Kendall and Gal, 2017) and found that the combination was more effective at representing uncertainty.

Our primary objective is to benchmark several methods for uncertainty estimation in rainfall–runoff modeling with DL. We
45 will demonstrate that DL models can produce statistically reliable uncertainty estimates using approaches that are straightforward to implement. We adapted the LSTM rainfall–runoff models developed by Kratzert et al. (2019b, 2020) with four different approaches to make distributional predictions. Three of these approaches use Neural Networks to create and mix probability distributions (Section 2.3.1). The fourth is Monte Carlo Dropout (MCD), which is based on direct sampling from the LSTM (Section 2.3.2).

50 The secondary objective of this work is to help advance the state of community model benchmarking infrastructure to include uncertainty estimation. We struggled with finding suitable benchmarks for the DL uncertainty estimation approaches explored here. Ad hoc benchmarking and model intercomparison studies are common (e.g., Andréassian et al., 2009; Best et al., 2015; Kratzert et al., 2019b; Lane et al., 2019; Berthet et al., 2020; Nearing et al., 2018), and while the community has a (quickly growing) large-sample dataset for benchmarking hydrological *models* (Newman et al., 2017; Kratzert et al., 2019b),

55 we lack standardized, open procedures for conducting comparative uncertainty estimation studies. Note that from the references
above only Berthet et al. (2020) focused on benchmarking uncertainty estimation strategies, and then only for assessing post-
processing approaches. We previously argued that data-based models provide a meaningful and general benchmark for testing
hypotheses and models (Nearing and Gupta, 2015; Nearing et al., 2020b), and here we develop a set of data-based uncertainty
estimation benchmarks built on a standard, publicly available, large-sample dataset that could be used as a baseline for future
60 benchmarking studies.

2 Data and Methods

As a framework for a benchmarking procedure, we followed the philosophy outlined by Nearing et al. (2018). They recognized
three elements of a benchmarking experiment: (i) data, (ii) metrics, and (iii) baselines (criteria). We added a diagnostic part in
the form of a post-hoc model examination. The purpose such an analysis is to (a) examine if the model properties correspond
65 to our hydrological intuitions, and (b) demonstrate procedures for checking model properties.

Section 2.1 provides an overview of the dataset that we used here. In short, our data came from the Catchment Attributes
and MEteorological Large Sample (CAMELS) dataset that is curated by the US National Center for Atmospheric Research.
Sect. 2.2 discusses a suite of performance metrics that we used for benchmarking the uncertainty estimation approaches. Sect.
2.3 introduces the different uncertainty estimation approaches that we benchmark and that we propose as data-driven baselines
70 for future benchmarking studies. We used exclusively data-driven models because they capture the empirically inferrable
relationships (e.g., Nearing et al., 2018, 2020b). Lastly, Sect. 2.4 discusses the different experiments of the post-hoc model
examination.

2.1 Data: The CAMELS Dataset

CAMELS (Newman et al., 2015; Addor et al., 2017) is an openly available dataset that contains basin-averaged daily meteoro-
75 logical forcings derived from three different gridded data products for 671 basins across the contiguous United States. The 671
CAMELS basins range in size between 4 and 25,000 km², and span a range of geological, ecological, and climatic conditions.
The original CAMELS dataset includes daily meteorological forcings (precipitation, temperature, short-wave radiation, and
humidity) from three different data sources (NLDAS, Maurer, DayMet) for the time period 1980 through 2010, as well as daily
streamflow discharge data from the US Geological Survey. CAMELS also includes basin-averaged catchment attributes related
80 to soil, geology, vegetation, and climate.

We used the same 531 basins from the CAMELS dataset (Figure 1) that were originally chosen for model benchmarking by
Newman et al. (2017). This means that all basins from the original 671 with areas greater than 2000km² or with discrepancies
of more than 10% between different methods for calculating basin area were not considered. Since all of the models that
we tested here are DL models, we use the terms *training*, *validation*, and *testing* that are standard in the machine learning
85 community, instead of the terms *calibration* and *validation* that are more common in the hydrology community (*sensu* Klemeš,
1986).

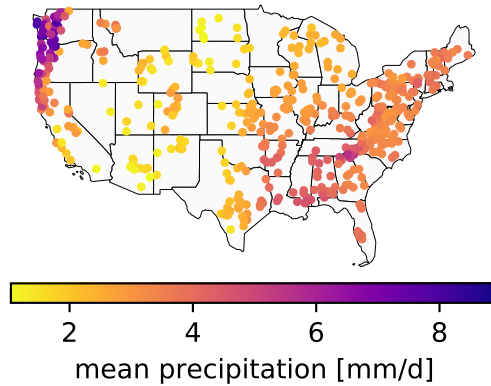


Figure 1. Overview map of the CAMELS basins.

2.2 Metrics: Benchmarking Evaluation

Benchmarking requires selecting a set of metrics that capture what modellers want to achieve for a particular application. For benchmarking uncertainty estimations, this translates to testing whether the distributional predictions are reliable and have high resolution (terminology adopted from Renard et al., 2010). Reliability measures how consistent the provided uncertainty estimates are with respect to the available observations; and resolution measures the “sharpness” of distributional predictions (i.e., how thin the body of the distribution is). Generally, models with higher resolution are preferable. However, this preference is conditional on the models being reliable. A model should not be overly precise relative to its accuracy (over-confident) or overly disperse relative to its accuracy (under-confident). We note, that the best form metrics for comparing distributional predictions would be to use proper scoring rules, such as likelihoods (see, e.g., Gneiting and Raftery, 2007). Likelihoods, however do not exist on an absolute scale (it is generally only possible to compare likelihoods between models), which makes these difficult to interpret (although, see: Weijs et al., 2010). Additionally, these can be difficult to compute with certain types of uncertainty estimation approaches, and so are not completely general for future benchmarking studies. We therefore based the assessment of reliability on *probability plots*, and evaluated resolution with a set of *summary statistics*.

Reliability. Probability plots (Laio and Tamea, 2007) are based on the following observation: If we insert the observations into the estimated cumulative distribution function, a consistent model will provide a uniform distribution on the interval $[0,1]$. The probability plot uses this to provide a diagnostic. The theoretical quantiles of this uniform are plotted on the x-axis, and the fraction of observations that fall below the corresponding predictions on the y-axis (Figure 2). Deficiencies appear as deviations from the 1:1 line: a perfect model should capture 10% of the observations below a 10% threshold, 20% under the 20% threshold and so on. If the relative counts of observations in particular modeled quantiles are higher than the theoretical quantiles this means that a model is under-confident. Similarly, if the relative counts of observations in particular modeled quantiles are lower than the theoretical quantiles then the model is over-confident.

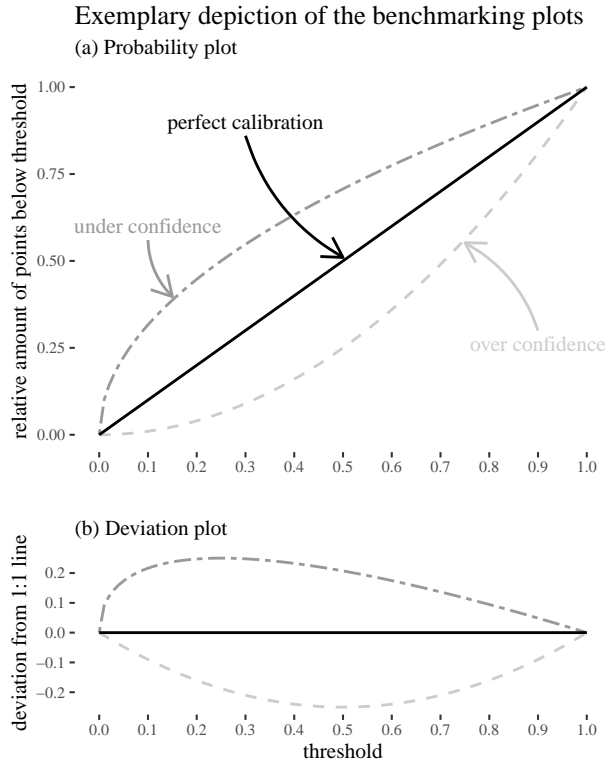


Figure 2. Illustration of the probability plot for the evaluation of predictive distributions. The x-axis shows the estimated cumulative distribution over all time steps by a given model, and the y-axis shows the actual observed cumulative probability distribution. A conditional probability distribution was produced by each model for each timestep in each basin. A hypothetically perfect model will have a probability plot that falls on the 1:1 line. We used 10% binning in our actual experiments. The “error plot” (bottom subplot) shows the distances of individual models from the 1:1 line.

Laio and Tamea (2007) proposed to use the probability plot in a continuous fashion to avoid arbitrary binning. We preferred to use discrete steps in our quantile estimates to avoid falsely reporting overly precise results (e.g., Cole, 2015). As such, we chose a 10% step size for the binning thresholds in our experiments. We used 10 thresholds in total: one for each of the resulting steps, and the additional 1.0 threshold which used the highest sampled value as an upper bound, so that an intuition regarding the upper limit can be obtained. Subtracting the thresholds from the relative count yields a *deviation from the 1:1 line* (the sum of which is sometimes referred to as *expected calibration error*, see e.g. Naeini et al., 2015). For the evaluation we depicted this counting error alongside the probability plots to provide better readability (see: Figure 2 (b)).

A deficit of the probability plot is its coarseness, since it represents an aggregate over time and basins. As such, it provides a general overview, but necessarily neglects many aspects of hydrological importance. Many expansions of the analytical range are possible. One that suggested itself was to examine the deviations from the 1:1 line for different basins. Therefore,

Table 1. Overview of the benchmarking metrics for assessing model resolution. Each metric is applied to the distributional streamflow predictions at each individual timestep and then aggregated over all time steps and basins. All metrics are defined in the interval $[0, \infty)$ and lower values are preferable (but not unconditional on the reliability).

Benchmarking metric ^a	Description
Mean absolute deviation	More robust than standard deviation and variance.
Standard deviation	We use Bessel’s correction to account for one degree of freedom.
Variance	We use Bessel’s correction to account for one degree of freedom.
Average width of the 0.2 to 0.9 quantiles	We compute the width of each of the inner quantiles and take the mean.
Distance between the 0.25 and 0.75 quantiles	Average interquartile range.
Distance between 0.1 and 0.9 quantiles	Average interdecile range.

^a All metrics are computed for the samples of each timestep and then averaged over time and basins.

we evaluated the probability plot for each basin specifically, computed the deviations from the 1:1 line and examine their distributions. We did not include the 1.0 threshold for this analysis since it consisted of large spikes only.

120 **Resolution.** To motivate why further metrics are required on top of the reliability plot it is useful to look at the following observation: There are an infinity of models that produce perfect probability plots. One edge-case example is a model that simply ignores the inputs and produces the unconditional empirical data distribution at every timestep. Another edge-case example is a hypothetical “perfect” model that produces delta distributions at exactly the observations every time. Both of these models have precision that exactly matches accuracy, and these two models could not be distinguished from each other
125 using a probability plot. Similarly, a model which is consistently under-confident for low flows can compensate this by being over-confident for higher flows. Thus, to better assess the uncertainty estimations, at least another dimension of the problem has to be checked: the resolution.

To assess the resolution of the provided uncertainty estimates, we used a group of metrics (Table 1). Each metric was computed for all available data points and averaged over all time steps and basins. The result are statistics that characterize
130 the overall *sharpness* of the provided uncertainty estimates (roughly speaking they give us a notion about how thin the body of the distributional predictions is). Further, to provide an anchor for interpreting the magnitudes of the statistics we also computed them for the observed streamflow values (this yields an unconditional empirical distribution for each basin that can be aggregated). These are not strictly the same, but we believe that they still provide some form of guidance.

2.3 Baselines: Uncertainty Estimation with Deep Learning

135 We tested four strategies for uncertainty estimation with deep learning. These strategies fall into two broad categories: Mixture Density Networks (MDN) and Monte Carlo Dropout (MCD). We believe that these approaches represent a useful set of baselines for benchmarking.

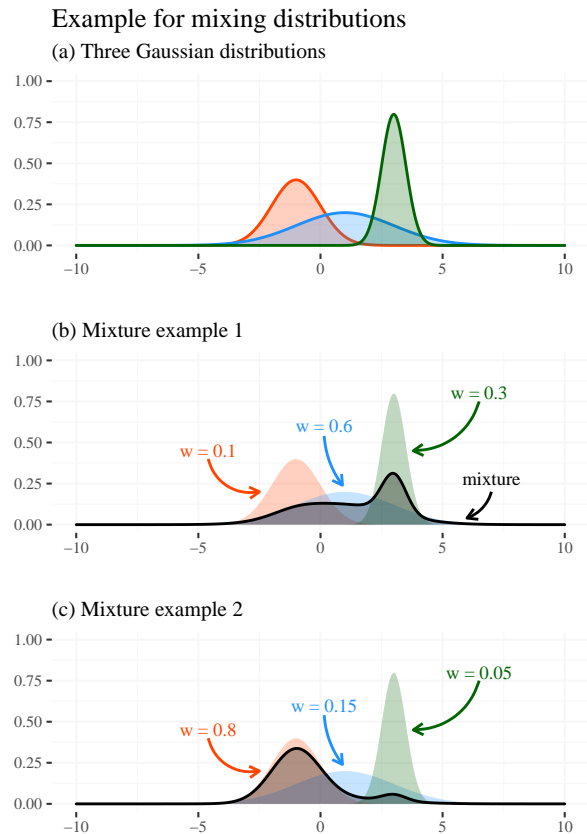


Figure 3. Illustration of the concept of a mixture density using Gaussian distributions. Plot (a) shows three Gaussian distributions with different parameters (i.e., different means and standard deviations). Plot (b) shows the same distributions superimposed with the mixture that results from the depicted weighting $w = (0.1, 0.6, 0.3)$. Plot (c) shows the same juxtaposition, but the mixture is derived from a different weighting $w = (0.80, 0.15, 0.05)$. The plots demonstrate that even in the simple example with fixed parameters the skewness and form of the mixed distribution can vary strongly.

2.3.1 Mixture Density Networks

The first class of approaches use a Neural Network to mix different probability densities. This class is commonly referred to as Mixture Density Networks (MDN; Bishop, 1994) and we tested three different forms of MDNs. A *mixture density* is a probability density function created by combining multiple densities, called *components*. An MDN is defined by the parameters of each component and the mixture weights. The mixture components are usually simple distributions like the Gaussians in Figure 3. Mixing is done using weighted sums. Mixture weights are larger than zero and collectively sum to one to guarantee that the mixture is also a density function. These weights can therefore be seen as the probability of a particular mixture component. Usually, the number of mixture components is discrete, however this is not a strict requirement.

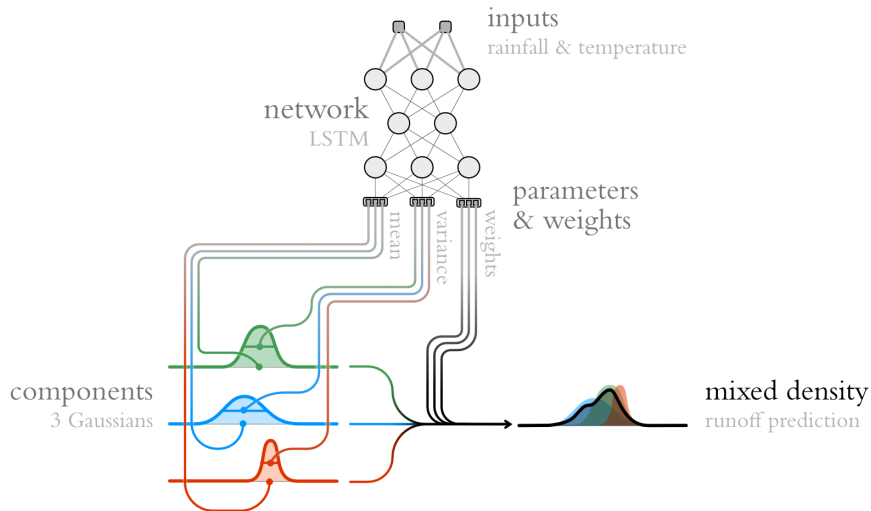


Figure 4. Illustration of a Mixture Density Network: The core idea is to use the outputs of a Neural Network to determine the mixture weights and parameters of a mixture of densities (see Figure 3). That is, for a given input, the network determines a conditional density function, which it builds by mixing a set of predefined base-densities (the so-called components).

The output of an MDN is an estimation of a conditional density, since the mixture directly depends a given input (Figure 4). The mixture represents changes every time the network receives new inputs (i.e., in our case for every timestep). We thus obtain time-varying predictive distributions that can approximate a wide variety of distributions (they can, for example, account for asymmetric and multimodal properties). The resulting model is trained by maximizing the log-likelihood function of the observations according to the predicted mixture distributions. We view MDNs as *intrinsically distributional*, in the sense that they provide probability distributions instead of first making deterministic streamflow estimates and then appending a sampling distribution.

In this study, we tested three different MDN approaches:

1. **Gaussian Mixture Models (GMMs)** are MDNs with Gaussian mixture components. Appendix B1 provides a more formal definition as well as details on the loss/objective function.
2. **Countable Mixtures of Asymmetric Laplacians (CMAL)** are similar to GMMs but instead of Gaussians, the mixture components are asymmetric Laplacian distributions (ALD). This allows for an intrinsic representation of the asymmetric uncertainties that often occur with hydrological variables like streamflow. Appendix B2 provides a more formal description as well as details on the loss/objective function.
3. **Uncountable Mixtures of Asymmetric Laplacians (UMAL)** also use asymmetric Laplacians as mixture components but the mixture is not discretized. Instead, UMAL approximates the conditional density by using Monte Carlo integra-

tion over distributions obtained from quantile regression (Brando et al., 2019). Appendix B3 provides a more formal description as well as details on the loss/objective function.

One can read this enumeration as a transition from simple to complex: We start with Gaussian mixture components, then replace them with ALD mixture components, and lastly transition from a fixed number of mixture components to an implicit approximation. There are two reasons why we think the more complex MDN methods might be more promising than a simple GMM. First, error distributions in hydrologic simulations often have heavy tails. A Laplace component lends itself towards thicker-tailed uncertainty (Figure 5). Second, streamflow uncertainty is often asymmetrical, and thus the ALD component could make more sense than a symmetric distribution in this application. For example, even a single ALD component can be used to account for zero flows (compare Figure 5 (b)). UMAL extends this to avoid having to pre-specify the number of mixture components, which removes one of the more subjective degrees of freedom from the model design.

2.3.2 Monte Carlo Dropout

MCD provides an approach to estimate a basic form of epistemic uncertainty. In the following we provide the intuition behind its application.

Dropout is a regularization technique for Neural Networks, but can also be used for uncertainty estimation (Gal and Ghahramani, 2016). Dropout randomly ignores specific network units (see Figure 6). Hence, each time the model is evaluated during training, the network structure is different. Repeating this procedure many times results in an ensemble of many submodels within the network. Dropout regularization is used during training, while during the model evaluation the whole Neural Network is used. Gal and Ghahramani (2016) showed that dropout can be used as a sampling technique for Bayesian inference – hence the name *Monte Carlo* dropout.

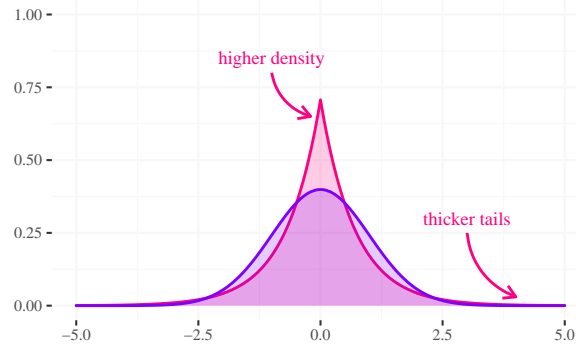
2.3.3 Model Setup

All models are based on the LSTMs from Kratzert et al. (2020) with an additional hidden layer after the LSTM to give the model more flexibility in estimating the mixture weights and components. This means that the presented predictions are from simulation models *sensu* Beven and Young (2013), i.e., no previous discharge observations were used as inputs. The LSTM in the context of hydrology is described in (e.g. Kratzert et al., 2018), and not repeated here. However, all models can be adapted to a forecasting settings.

In short, our setting was the following: Each model takes a set of meteorological inputs (namely: precipitation, solar radiation, min. and max. daily temperature, and vapor pressure) from a set of products (namely: NLDAS, Maurer, and DayMet). As in our previous studies, a set of static attributes is concatenated to the inputs (see: Kratzert et al., 2019b). The training period is from 01 October 1980 to 30 September 1990. The validation period is from 01 October 1990 to 30 September 1995. Finally, the test period is from 01 October 1995 to 01 September 2005. This means that we use around $365 * 10 = 3,650$ training points from 531 catchments (equating to a total of $531 * 3650 = 1,938,150$ observations for training).

Examples for different components

(a) Laplace and Gaussian distributions with same variance



(b) Different ALDs with same variance

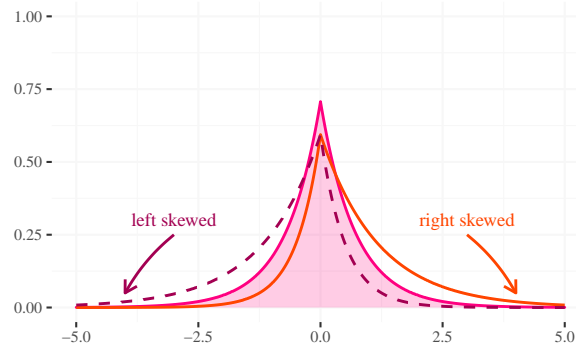


Figure 5. Characterization of distributions that are used as mixture components in our networks. Plot (a) superimposes a Gaussian with a Laplace distribution. The latter is sharper around its center, but this sharpness is traded with thicker tails. We can think about it in the following way: the difference in area is moved to the center and the tails of the distributions. Plot (b) illustrates how the asymmetric Laplace distribution (ALD) can accommodate for differences in skewness (via an additional parameter).

We trained all MDNs with the log-likelihood and the MCD as in Kratzert et al. (2020), except that the loss was the mean-squared error (as proposed by Gal and Ghahramani, 2016). All hyperparameters were selected as to provide the smallest average deviation from the 1:1 line of the probability plot for each model. For GMM this resulted in 10 components and for CMAL in 3 components (Appendix A).

To make the benchmarking procedure work at the most general level, we employed the setup depicted in Figure 7. This allows that each approach, with the ability to generate samples, can be plugged into the framework (as evidenced by the inclusion of MCD). For each basin and time step the models either predict the streamflow directly (MCD) or provide a distribution over the streamflow (GMM, CMAL, and UMAL). In the latter case, we then sampled from the distribution to get 7500 sample points for each data point. Since the distributions have infinite support samples below $0 \text{ m}^3 \text{ d}^{-1}$ are possible. In this case, we truncated

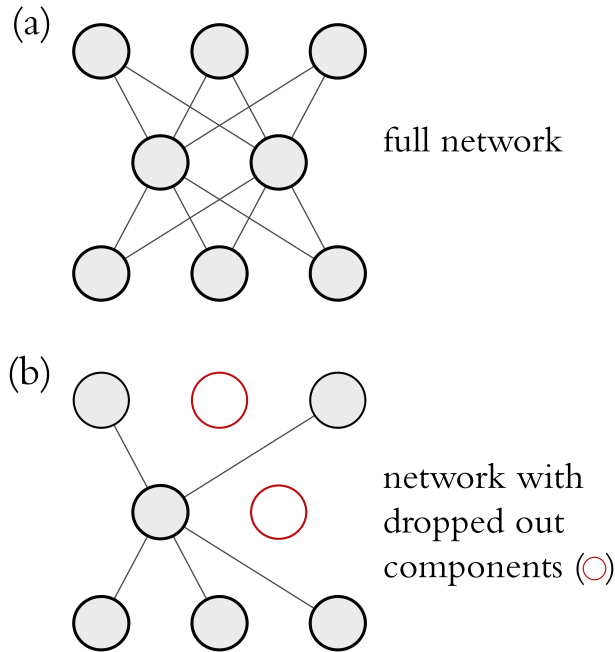


Figure 6. Schematic depiction of the dropout concept.

the distribution by setting the sample to zero. All in all, this resulted in $531 * 3650 * 7500$ simulation points for each model and metric. Exaggerating a little bit we could say that we actually deal with "*multi-point*" predictions here.

2.4 Post-hoc Model Examination: Checking Model Behavior

205 We performed a post-hoc model examination as a complement to the benchmarking to avoid potential blind spots. The analysis has of three parts, each one is associated with a specific property:

1. **Accuracy:** How accurate are single-point predictions obtained from the distributional predictions?
 2. **Internal consistency:** How are the mixture components used with regard to flow conditions?
 3. **Estimation quality:** How can we examine the properties of the distributional predictions with regard to second-order uncertainties?
- 210

The following subsections lay out our rationale and method of investigating each of these questions.

2.4.1 Accuracy: Single-Point Predictions

To address accuracy, we used standard performance metrics applied to single-point predictions. The term *single-point predictions* is used here in the statistical sense of a point estimator, to differentiate it from distributional predictions. Single-point

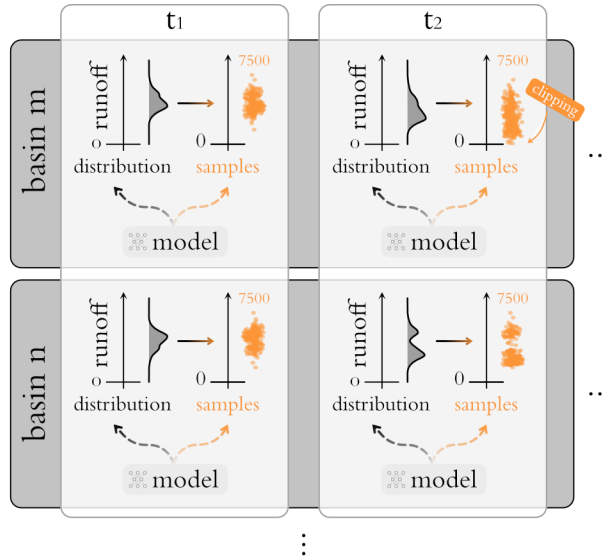


Figure 7. Schemata of the general setup. In total we have 531 basin with approximately 3650 data points each. For each time step we compute 7500 samples, by either directly sampling from the model (MCD) or by estimating a conditional distribution first and then sampling from it (all MDNs).

Table 2. Overview of the different single-point prediction performance metrics. The table is adapted from Kratzert et al. (2020).

single-point metric	Description	Reference
NSE	Nash–Sutcliffe efficiency	Eq. 3 in Nash and Sutcliffe (1970)
KGE	Kling–Gupta efficiency	Eq. 9 in Gupta et al. (2009)
Pearson’s r	Pearson correlation between observed and simulated flow	
α -NSE	Ratio of standard deviations of observed and simulated flow	From Eq. 4 in Gupta et al. (2009)
β -NSE	Ratio of the means of observed and simulated flow	From Eq. 10 in Gupta et al. (2009)
FHV	Top 2% peak flow bias	Eq. A3 in Yilmaz et al. (2008)
FLV	Bottom 30% low flow bias	Eq. A4 in Yilmaz et al. (2008)
FMS	Bias of the slope of the flow duration curve between the 20% and 80% percentile	Eq. A2 Yilmaz et al. (2008)
Peak-Timing	Mean peak time lag (in days) between observed and simulated peaks	Appendix D in Kratzert et al. (2020)

215 predictions were derived as the mean of the distributional predictions at each timestep, and evaluated for aggregating over the different basins, using mean and median as aggregation operators (as in Kratzert et al., 2019b). Table 2 summarises the different metrics.

2.4.2 Internal Consistency: Mixture Component Behavior

To get an impression of the model consistency we looked at the behavioral properties of the mixture densities themselves. The goal was to get some qualitative understanding about how the mixture components are used in different situations. As a prototypical example for this kind of examination we refer to the study of Ellefsen et al. (2019). It examined how LSTMs use the mixture weights to predict the future within a simple game setting. Similarly, Nearing et al. (2020a) reported that a GMM produced probabilities that changed in response to different flow regimes. We conducted the same exploratory experiment with the best-performing benchmarked approach.

2.4.3 Estimation Quality: Second Order Uncertainty

MDNs allow us to check the quality of the given distributional predictions. The basic idea here is that predicted distributions are estimations themselves. MDNs provide us with an estimation of the aleatoric uncertainty in the data and the MCD is a basic estimation of the epistemic uncertainty. Thus, the estimations of the uncertainties are not uncertainties themselves, but estimations thereof and thus as such subject to uncertainties themselves. This does, of course, hold for all forms of uncertainty estimates, not just for MDNs. However, MDNs provide us with single-point predictions of the *distribution parameters and mixture weights*. We can therefore assess the uncertainty of the estimated mixture components, by checking how perturbations (e.g. in form of input noise) influence the distributional predictions. This can be important in practice. For example, if we mistrust a given input – let us say because the event was rarely observed so far or if we suspect some form of errors – we can use a second order check to obtain qualitative understanding of the goodness of the estimate.

Concretely, we examined how second order effect on the estimated uncertainty can be checked with MCD approach (which provides estimations for some form of epistemic uncertainties), as it can be layered on top of the MDN approaches (which provide estimations of the aleatoric uncertainties). This means that the Gaussian Process interpretation by Gal and Ghahramani (2016) can not be strictly applied. We can nonetheless use the MCD as a perturbation method, since it still forces the model to learn an internal ensemble.

3 Results

3.1 Benchmarking Results

The probability plots for each model are shown in Figure 8. The approaches that used mixture densities performed better than MCD, and among all of them, the ones that used asymmetric components (CMAL and UMAL) performed better than GMM. CMAL has the best performance overall. All methods, except UMAL, tend to give estimates above the 1:1 line for thresholds lower than 0.5 (the median). This means that the models were generally under-confident in low-flow situations. GMM was the only approach that showed this type of under-confidence throughout all flow regimes – in other words, was above the 1:1 line everywhere. The largest under-confidence occurred for MCD in the mid-flow range (between 0.3 and 0.6 quantile thresholds). For higher flow volumes, both UMAL and MCD underestimated uncertainty. Overall, CMAL was close to the 1:1 line.

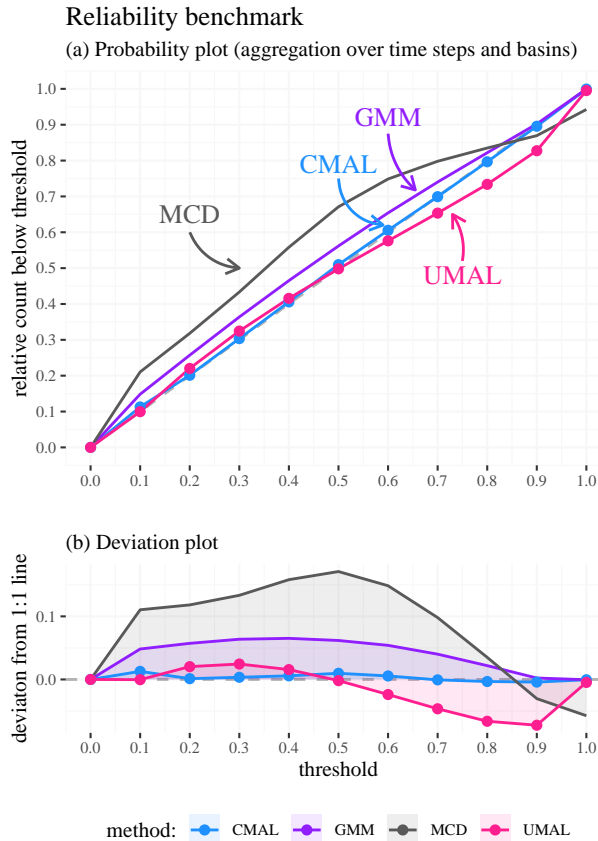


Figure 8. Probability plot benchmark results for the 10-year test period over 531 basins in the continental US. Subplot (a) shows the probability plots for the four methods. The 1:1 line is shown in grey and indicates perfect probability estimates. Subplot (b) details deviations from the 1:1 line to allow for easier interpretation.

Figure 9 shows how the deviations from the 1:1 line varied for each basins within each threshold of the probability plot. That is, each subplot shows a specific threshold, and each density resulted from the distributions of deviations from the 1:1 line that the different basins exhibit. The distributions for 0.4 to 0.6 flow quantiles were roughly the same across methods, however, the distributions from CMAL and UMAL were better centered than GMM and MCD. At the outer bounds, a bias was induced due to evaluating in probability space: It is more difficult to be over-confident as the thresholds get lower; and vice versa it is more difficult to be under-confident as the thresholds become higher. At higher thresholds, UMAL had a larger tendency to fall below the center-line, which is also visible in the probability plot. Again, this is a consequence of the overconfident predictions from the UMAL approach for larger flow volumes (MCD also exhibited the same pattern of overconfidence for the highest threshold).

Reliability benchmark: basin-wise deviation evaluation

Basin-wise deviations from the 1:1 line for the different probability plot thresholds

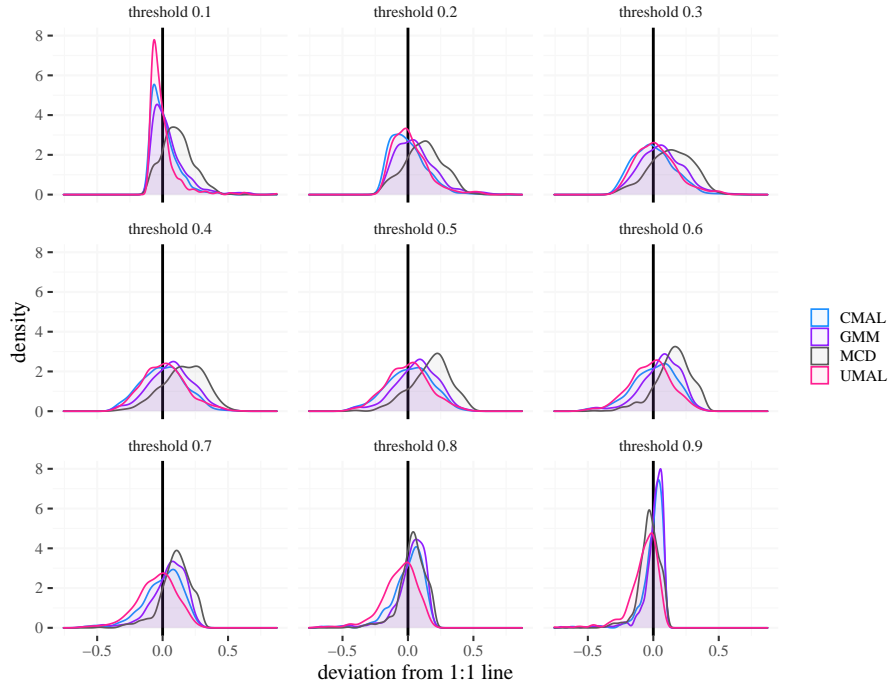


Figure 9. Kernel densities of the basin-wise deviation from the 1:1 line in the probability plot for the different inner quantiles. These distributions result from evaluating the performance at each basin individually (rather than aggregating over basins). Note how the bounded domain of the probability plot induces a bias for the outer thresholds as the deviations cannot expand beyond the $[0,1]$ interval.

Lastly, Table 3 shows the results of the resolution benchmark. In general, UMAL and MCD provide the sharpest distributions. This goes along with overconfident narrow distributions that both approaches exhibit for high flow volumes. These, having the largest uncertainties, also influence the average resolution the most. The other two approaches, GMM and CMAL, provide less sharp distributions. In the case of GMM, this is reflected in under-confidently wide distributions in the probability plot. Notably, the predictions of CMAL are in between those of the over-confident UMAL and the under-confident GMM. This makes sense from a methodological viewpoint since we designed CMAL as an "intermediate step" between the two approaches. Moreover, this reflects a trade-off in the log-likelihood (which the models are trained for), where a balance between reliability and resolution has to be obtained in order to minimize the loss.

Table 3. Benchmark statistics for model precision. These metrics were applied to the distributional predictions at individual time steps. The lowest metric per row is marked in bold. Lower values are better for all statistics (conditional on the model having high reliability). This table also provides statistics of the empirical distribution from the observations (obs) aggregated over the basins as a reference, which are not directly comparable with the model statistics since obs represents an unconditional density, while the models provide a conditional one. The obs statistics should be used as a reference to contextualize the statistics from the modeled distributions.

Benchmarking Metric ^a	GMM	CMAL	UMAL	MCD	obs
Mean absolute deviation	0.52	0.48	0.42	0.39	0.77
Standard deviation	0.69	0.63	0.00^b	0.38	2.85
Variance	2.73	2.64	0.00^b	0.48	12.78
Average with of the 0.2 to 0.9 quantiles	0.18	0.17	0.14	0.13	0.41
Distance between the 0.25 and 0.75 quantiles	0.71	0.68	0.67	0.51	1.38
Distance between 0.1 and 0.9 quantiles	2.00	1.90	1.72	1.26	5.32

^a All metrics are computed for the samples of each timestep and then averaged over time and basins. All metrics are defined in the domain $[0, \infty)$ and values close to zero are best (conditional on the reliability).

^b The displayed 0 is a rounding artifact. The actual variance here is higher than 0. The "collapse" is, by and large, a result of a very narrow distribution, combined with a heavy truncation for values below zero.

3.2 Post-hoc Model Examination

3.2.1 Accuracy

Table 4 shows accuracy metrics of single-point predictions, i.e., the means of the distributional predictions aggregated over time steps and basins. It depicts the means and medians of each metric across all 531 basins. The approach labeled *MCDp* reports the statistics from the MCD model, but without sampling (i.e., from the full model). The model performances are not entirely comparable to each other, since the architecture and hyperparameters of the MCD model were chosen with regard to the probability plot. We therefore also compare against a model with the same hyper-parameters as Kratzert et al. (2019b) – the latter model is labeled *LSTMp* in Table 4.

Among the uncertainty estimation approaches, the models with asymmetric mixture components (CMAL and UMAL) perform best. UMAL provided the best point estimates. This is in line with the high resolutions of the uncertainty estimation benchmark: the sharpness makes the mean a better predictor of the likelihood’s maximum and indicates again that the approach trades reliability for accuracy. That said, even with our naive approach for obtaining single-point estimations (i.e., simply taking the mean), both CMAL and UMAL manage to outperform the model that is optimized for single-point predic-

tions with regard to some metrics. This suggests that it could make sense to train a model to estimate distributions and then
280 recover best estimates. One possible reason why this might be the case is that single-point loss functions (e.g., MSE) define an
implicit probability distribution themselves (e.g., minimizing an MSE loss is equivalent to maximizing a Gaussian likelihood
with fixed variance). Hence, using a more nuanced loss function (i.e., one that is the likelihood of a multimodal, asymmetrical,
heterogeneous distribution) can improve performance even for the purpose of making non-distributional estimates. In fact, it
is reasonable to expect that the results of the MDN approaches can be improved even further by using a more sophisticated
285 strategy for obtaining single-point predictions (e.g., searching for the maximum of the likelihood). The single-point prediction
LSTM (*LSTM_p*) outperforms the ALD-based MDNs for tail metrics of the streamflow – that is, for the low- (FLV) and high-
bias (FHV). These are regimes where we would expect the most asymmetric distributions for hydrological reasons, and hence
the means of the asymmetric distributions might be a suboptimal choice.

3.2.2 Internal Consistency

290 Figure 10 summarizes the behavioral patterns of the CMAL mixture components. It depicts an exemplary hydrograph superim-
posed on the CMAL uncertainty prediction, together with the corresponding mixture component weights. The mixture weights
always sum to one. This figure shows that the model seemingly learns to use different mixture components for different parts
of the hydrograph. In particular, distributional predictions in low-flow periods (perhaps dominated by base flow) are largely
controlled by the first mixture component (as can be seen by the behavior of mixture α_1 in Figure 10). Falling limbs of the
295 hydrograph (corresponding roughly to throughflow) are associated with the second mixture component (α_2), which is low
for both rising limbs and low-flow periods. The third component (α_3) mainly controls the rising limbs, the peak-runoff, but
also has some influence throughout the rest of the hydrograph. In effect, CMAL learns to separate the hydrograph into three
parts – rising limb, falling limb, and low-flows – which correspond to the standard hydrological conceptualization. No explicit
knowledge of this particular hydrological conceptualization is provided to the model – it is solely trained to maximize overall
300 likelihood.

3.2.3 Estimation Quality

In this experiment, we are interested in how uncertainties in the estimation of weights and parameters of the mixtures influence
the distributional predictions. Figure 11 illustrates the procedure: The upper part shows a hydrograph with the 25%–75%
quantiles and 5%–95% quantiles from CMAL. This is the main prediction. The lower plots show kernel density estimates
305 for particular points of the hydrograph (marked in the upper part with black ovals labeled ‘a’, ‘b’ and ‘c’, and shown in
red in the lower subplots). These three specific points represent different portions of the hydrograph with different predicted
distributional shapes and are thus well suited for showcasing the technique. These kernel densities (in red) are superimposed
with 25 sampled estimations derived after applying MCD on top of the CMAL model (shown in lighter tones behind the
first order estimate). These densities are the MCD-perturbed estimations and thus a gauge for how second order uncertainties
310 influence the distributional predictions.

Table 4. Evaluation of the different single-point prediction performance metrics. Best performance is marked in bold.

	Aggregation	GMM	CMAL	UMAL	MCD	MCDp	LSTMp
NSE ^a	median	0.744	0.784	0.791	0.762	0.763	0.762
NSE ^a	mean	0.690	0.735	0.749	0.646	0.675	0.683
KGE ^b	median	0.728	0.748	0.785	0.730	0.737	0.791
KGE ^b	mean	0.685	0.714	0.745	0.525	0.622	0.710
COR ^c	median	0.880	0.901	0.903	0.890	0.890	0.891
COR ^c	mean	0.857	0.876	0.880	0.866	0.865	0.871
α -NSE ^d	median	0.816	0.820	0.863	0.877	0.880	0.952
α -NSE ^d	mean	0.822	0.828	0.858	0.893	0.900	0.976
β -NSE ^e	median	0.006	-0.013	-0.027	0.061	0.054	0.027
β -NSE ^e	mean	0.004	-0.011	-0.030	0.095	0.065	0.011
FHV ^g	median	-17.322	-17.164	12.243	-11.346	-11.343	-4.277
FHV ^g	mean	-16.324	-15.140	-12.705	-8.641	-8.744	-1.084
FLV ^c	median	28.561	28.442	27.954	43.830	-65.762	-4.864
FMS ^h	median	-7.346	-5.443	-2.508	-20.768	-17.039	-8.650
Peak-Timing ⁱ	median	0.308	0.333	0.286	0.286	0.286	0.286
Peak-Timing ⁱ	mean	0.464	0.455	0.412	0.427	0.425	0.405

^a Nash–Sutcliffe efficiency $(-\infty, 1]$, values closer to one are desirable.

^b Kling–Gupta efficiency $(-\infty, 1]$, values closer to one are desirable.

^c Pearson correlation: $[-1, 1]$, values closer to one are desirable.

^d α -NSE decomposition: $(0, \infty)$, values close to one are desirable.

^e β -NSE decomposition: $(-\infty, \infty)$, values close to zero are desirable.

^f Top 2 % peak flow bias: $(-\infty, \infty)$, values close to zero are desirable.

^g 30 % low flow bias: $(-\infty, \infty)$, values close to zero are desirable. Since a strong bias is induced by a small subset of basins, we provide the median aggregation.

^h Bias of FDC mid segment slope: $(-\infty, \infty)$, values close to zero are desirable. Since a strong bias is induced by a small subset of basins, we provide the median aggregation.

ⁱ Lag of peak timing: $(-\infty, \infty)$, values close to zero are desirable.

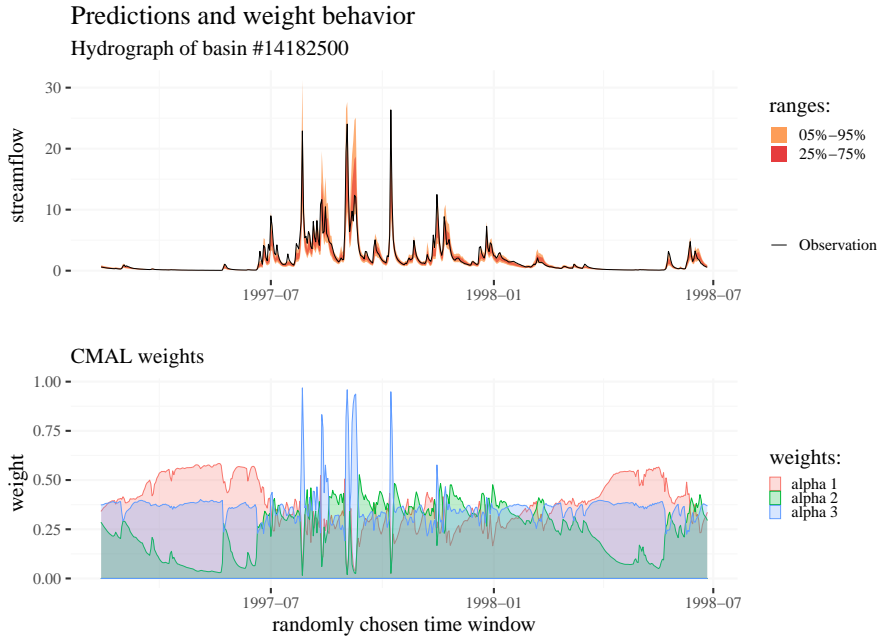


Figure 10. Top: Hydrograph of an exemplary event in the test period with both 5% to 95% and 25% to 75% quantile-range. Bottom: The weights (α_i) of the CMAL mixture components for these predictions.

3.3 Computational Demand

This section gives an overview of the computational demand required to compute the different uncertainty estimation. All of the reported execution times were obtained by using NVIDIA P100 (16GB RAM), using the Pytorch library (Paszke et al., 2019). A single execution of the CMAL model with a batch size of 256 takes $0.026^{+0.001}_{-0.002}$ seconds (here, and in the following, the basis gives the median over 100 model runs; the index and the exponent show the deviations the 10% quantile and the 90% quantile respectively). An execution of the MCD model takes $0.055^{+0.002}_{-0.001}$ seconds. The slower execution time of the MCD approach here is explained by its larger hidden size. It used 500 hidden cells, in comparison to the 250 hidden cells of CMAL (see Appendix A).

Generating all the needed samples for the evaluation with MCD and a batch size of 256 would take approximately 360 days (since 7500 samples have to be generated for 531 basins and 10 years on a daily resolution). In practise we could shorten this time to under a week by using considerably larger batch-sizes and distributing the computations for different basins over multiple GPUs. In comparison, computing the same amount of samples by re-executing the CMAL model would take around 174 days. In practise, however, only a single run of the CMAL model is needed, since MDNs provide us with a density estimate from which we can directly sample in a parallel fashion (and without needing to re-execute the model run). Thus, the CMAL model, with a batch size of 256, takes only ~ 14 hours to generate all needed samples.

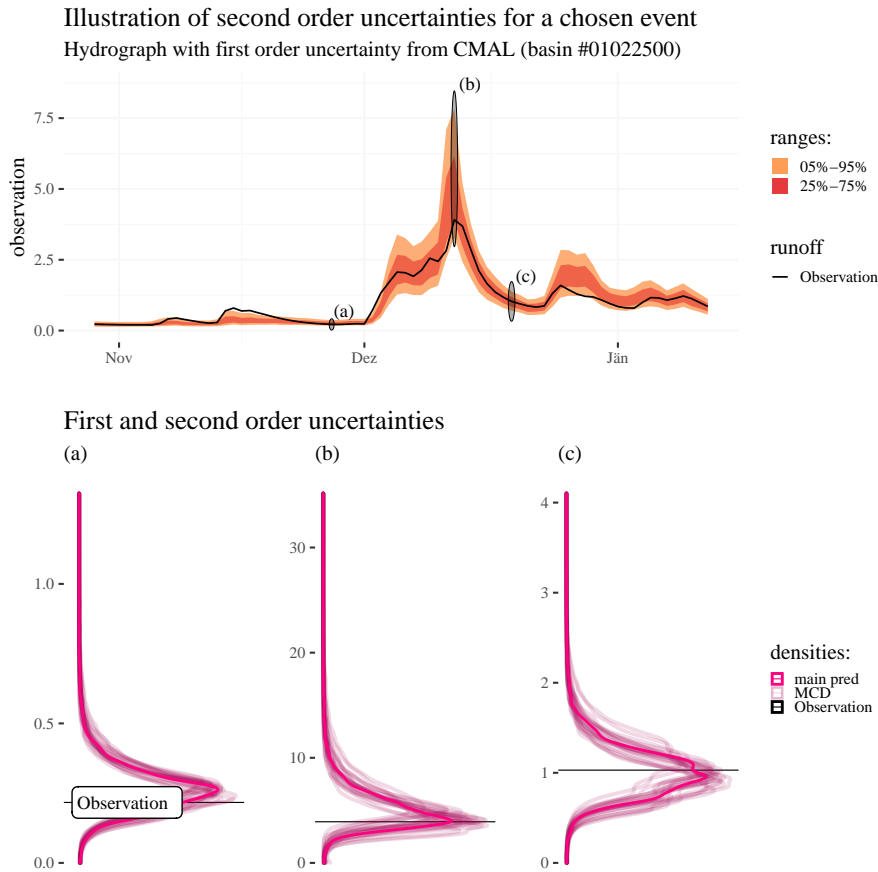


Figure 11. Illustration of second order uncertainties estimated by using MCD to sample the parameters of the CMAL approach. The upper subplot shows an observed hydrograph and predictive distributions as estimated by CMAL. The lower subplots show the CMAL distributions and distributions from twenty-five MCD samples of the CMAL model at three selected time steps (indicated by black ovals shown on the hydrograph). The abbreviation "main pred" marks the unperturbed distributional predictions from the CMAL model.

4 Conclusions and Outlook

Benchmarking hydrological models is a large undertaking because setting up a model over many watersheds requires substantial effort. Benchmarking uncertainty estimation approaches requires even more effort: In addition to setting up at least one hydrological model, most uncertainty estimation strategies require the setup and calibration of additional parts to predict uncertainty. These additions might be sampling distributions, ensembles, post-processors, and so forth. Regardless of these difficulties, uncertainty estimation is critical for hydrological forecasting. However, as of now, there is no way to assess different uncertainty estimation strategies for general or particular setups. One of our goals was thus to provide a public data-driven

benchmarking scheme. Other modeling groups can build on it for more formal, or at least community-minded, benchmarking. Our hope is that this will encourage better community practice and provide a foundation for others to build on.

335 With respect to the uncertainty estimation baselines presented here, results using deep learning seem promising. The distribu-
tional predictions of the uncertainty estimation approaches tested here are dynamic in that the probability distributions change
in response to dynamic inputs (precipitation, etc.). Their general behavior is in accordance with basic hydrological intuition in
that the uncertainty increases with a rise in streamflow. This relationship is, however, non-linear and not a simple 1:1 depiction.
The MCD approach provided the worst uncertainty estimates. For one, this is very likely due to the Gaussian assumption of the
340 uncertainty estimates is difficult to hold for many low- and high-flow situation. There is however also a more nuanced aspect to
consider. MCD estimates a particular form of epistemic uncertainty, while the MDNs estimate the aleatoric uncertainty. These
two uncertainty types can be seen as perpendicular to each other. They do however co-appear in our setting, since both the
epistemic and the aleatoric uncertainties are largest for high flow volumes.

There was an advantage to using asymmetric distributions as exhibited by UMAL and CMAL, as compared to GMM both
345 in terms of reliability of distributional predictions and accuracy of derived single-point predictions. The CMAL approach in
particular gave distributional predictions that were very good in terms of reliability and sharpness (and single-point estimates).
We could demonstrate that it exhibits a direct link between the predicted probabilities and hydrologic behavior in that different
distributions were activated (i.e., got larger mixture weights) for rising vs. falling limbs, etc.

Nevertheless, it is important for us to remind the readers that likelihood based approaches (for estimating the aleatoric
350 uncertainty) are prone to give over-confident predictions. We were not able to diagnose this empirically. This might be more a
result of the limits of the inquiry than the non-existence of the phenomenon. Thus, to conclude, we will discuss the limits of
the chosen benchmarking setup and the post-hoc examination:

Our personal observation regarding *benchmark data* is that the current generation of open datasets is the result of a growing
enthusiasm for community efforts. New benchmarking possibilities will become available in the near future. However, a down-
355 side of relying on open datasets is missing defense against over-fitting on the test data. We therefore hope that in the future the
development of datasets will withhold some test data to make even more rigorous benchmarking possible. As far as we know,
this is, for example, already happening in the PLUMBER-2 intercomparison project developed at the University of New South
Wales.

With regard to the *metrics*, the proposed methods exhaust the diagnostic capacity of the probability plot (at least as long
360 as we use it in the proposed form). This is an encouraging sign for our ability to make reliable hydrologic predictions. The
downside is that it might be hard for models to improve on this metric going forward. As mentioned throughout the manuscript,
it is important to be aware that the probability plot misses several important aspects of probabilistic prediction (for example,
precision, consistency, or event specific properties). We thus expect that future efforts will derive and use more powerful
metrics, similar to the way we continue to develop diagnostic tooling for single-point predictions (see: Nearing et al., 2018).

365 Stronger *baselines* will then emerge in tandem with stronger metrics. From our perspective, there is plenty of room to build
better ones. A perhaps self-evident example for the potential of improvements are ensembles: Kratzert et al. (2019b) showed
the benefit of LSTM ensembles for single-point predictions, and we believe that similar approaches could be developed for

Table A1. Overview of the general benchmarking setup.

	GMM	CMAL	UMAL	MCD
Training Period	01Oct1980 - 30Sep1990	01Oct1980 - 30Sep1990	01Oct1980 - 30Sep1990	01Oct1980 - 30Sep1990
Validation Period	01Oct1990 - 30Sep1995	01Oct1990 - 30Sep1995	01Oct1990 - 30Sep1995	01Oct1990 - 30Sep1995
Test Period	01Oct1995 - 30Sep2005	01Oct1995 - 30Sep2005	01Oct1995 - 30Sep2005	01Oct1995 - 30Sep2005
Training Loss	Negative Log-likelihood	Negative Log-likelihood	Negative Log-likelihood	MSE
Camels Attributes	Yes	Yes	Yes	Yes
Input Products	DayMet, Maurer, NLDAS	DayMet, Maurer, NLDAS	DayMet, Maurer, NLDAS	DayMet, Maurer, NLDAS
Regularization: Noise	Yes	Yes	Yes	Yes
Regularization: Dropout	Yes	Yes	Yes	Yes
Sampling space for τ	N/A	N/A	N/A	(0.01,0.99)
Gradient clipping	Yes	Yes	Yes	No

uncertainty estimation. We are therefore sure that future research will yield improved approaches, and move us closer to achieving holistic diagnostic tools for the evaluation of uncertainty estimations (*sensu* Nearing and Gupta, 2015).

370 Our *post-hoc examination* demonstrated how the uncertainty estimation models can be analysed with regard to hydrological points of interest. Remarkably, one of the results showed that the distributional predictions are not only reliable and precise but also yield strong single-point estimates. By and large, however, this just a start. Rainfall–runoff modelling is a complex endeavor. Often we do not just care that models perform well, but also about the way these predictions are made. Ultimately, we want to get the “*right answers for the right reasons*” (Kirchner, 2006). Current data is noisy, and metrics do not capture
375 everything we want models to achieve (see also: Muller, 2018; Thomas and Uminsky, 2020). We therefore expect that, at least as of now, there will remain blind spots in comparative studies. Post-hoc examination can potentially remedy this fact and demonstrate to users how model checking can be done. We believe that it will play a central role in future benchmarking efforts and model developments.

Code and data availability. We will make the code for the experiments and data of all produced results available online. We trained all
380 our machine learning models with the `neuralhydrology` Python library (<https://github.com/neuralhydrology/neuralhydrology>). The CAMELS dataset with static basin attributes is accessible at <https://ral.ucar.edu/solutions/products/camels>.

Appendix A: Hyperparameter Search and Trainig

A1 General Setup

Table A provides the general setup for the hyperparameter search and model training.

Table A2. Search space of the hyperparameter search. The search is conducted in two steps: The variables used in first step are shown top part of the table, the variables used in the second step bottom part and written in gray.

	GMM	CMAL	UMAL	MCD
Hidden size LSTM	250,500,750,1000	250,500,750,1000	250,500,750,1000	250,500,750,1000
Number of components	1,3,5,10	1,3,5,10	N/A	N/A
Regularization: Noise	0.05,0.1,0.2	0.05,0.1,0.2	0.05,0.1,0.2	0.05,0.1,0.2
Regularization: Dropout	0.4,0.5	0.4,0.5	0.4,0.5	0.1,0.25,0.4,0.5,0.75
Batch size	128,256	128,256	128,256	128,256
Learning rate	0.0001,0.0005,0.001	0.0001,0.0005,0.001	0.0001,0.0005,0.001	0.0001,0.0005,0.001

385 **A2 Noise Regularization**

Adding noise to the data during training can be viewed as a form of data augmentation and regularization that biases towards smooth functions. These are large topics in themselves, and at this stage we refer to Rothfuss et al. (2019) for an investigation on the theoretical properties of noise regularization and some empirical demonstrations. In short, plain maximum likelihood estimation can lead to strong over-fitting (resulting in a spiky distribution that generalizes poorly beyond the training data).

390 Training with noise regularization results in smoother density estimates that are closer to the true conditional density.

Following these findings we also add noise as a smoothness regularization for our experiments. Concretely, we decided to use a relative additive noise as a first order approximation to the sort of noise contamination we expect in hydrological time series. The operation for regularization is:

$$z_* = z + z \cdot \mathcal{N}(0, \sigma),$$

where z is a placeholder variable for either the dynamic or static input variables or the observed runoff (and, as before, the time index is omitted for the sake of simplicity), $\mathcal{N}(0, \sigma)$ denotes a Gaussian noise term with mean zero and a standard deviation σ , and z_* the obtained noise contaminated variable.

A3 Search

To provide a meaningful comparison we conducted a hyperparameter search for each of the four conditional density estimators. A hyperparameter search is an extended search (usually computationally intensive) for the best pre-configuration of a machine learning model.

In our case we searched over the combination of six different hyperparameters (see Table A2). To balance between computational resources and search depth we took the following course of action:

- First, we informally searched for sensible general presets.

Table A3. Resulting parameterization from the hyperparameter search.

	GMM	CMAL	UMAL	MCD
Hidden size LSTM	250	250	250,	500
Number of components	10	3	N/A	N/A
Regularization: Noise	0.2	0.2	0.2	0.1
Regularization: Dropout	0.4	0.5	0.5	0.75
Batch size	256	256	256	256
Learning rate	0.001	0.0005	0.0005	0.001

- 405 – Second, we trained the models for each combinations of the four hyperparameters “Hidden Size” (the number of cells in the LSTM, see Kratzert et al., 2019b), “Noise” (added relative noise of the output, see Appendix A2), “number of densities” (the number of density heads in the mixture (only needed of MDN and CMAL), and “Dropout Rate” (the rate of dropout employed during training (and inference in the case of MCD)). We marked these in Table A2 with a white background.
- 410 – Third, we choose the best resulting model and refine the found models by searching for the best settings for the hyperparameters “batch size” (the number of samples shown per backpropagation step) and “learning rate” (the parameter for the update per batch).

A4 Results

The results of the hyperparameter search are summarized in Table A3.

Appendix B: Baselines

415 B1 Gaussian Mixture Model

Gaussian mixture models (GMMs; Bishop, 1994) are well-established for producing distributional predictions from a single input. The principle of GMMs is to have a neural network that predicts the parameters of a mixture of Gaussians (i.e., the means, standard deviations and weights) and to use these mixtures as distributional output. GMMs are a powerful concept. The seen usage for diverse applications such as acoustics (Richmond et al., 2003), handwriting generation (Graves, 2013), sketch
420 generation (Ha and Eck, 2017), and predictive control (Ha and Schmidhuber, 2018).

Given the rainfall-runoff modelling context, a GMM models the runoff $q \in \mathbb{R}$ at a given time step (subscript omitted for the sake of simplicity) as a probability distribution $p(\cdot)$ of the input $\mathbf{x} \in \mathbb{R}^{M \times T}$ (where M indicates the number of defined inputs, such as precipitation and temperature; and T the number of used time steps which are provided to the Neural Network) as a mixture of K Gaussians:

$$425 \quad p(q | \mathbf{x}) = \sum_{k=1}^K \alpha_k(\mathbf{x}) \cdot \mathcal{N}\left(q | \mu_k(\mathbf{x}), \sigma_k(\mathbf{x})\right), \quad (\text{B1})$$

where α_k are a mixture weights with the property $\alpha_k(\mathbf{x}) \geq 0$ and $\sum_{k=1}^K \alpha_k(\mathbf{x}) = 1$ (convex sum); and $\mathcal{N}(\mu_k(\mathbf{x}), \sigma_k(\mathbf{x}))$ denotes a Gaussian with mean μ_k and standard deviation σ_k . All three defining variable – i.e. the mixture weights, the means, and the standard deviations, are set by a Neural Network and thus a function of the inputs \mathbf{x} .

The negative logarithm of the likelihood between the training data the training data and the estimated conditional distribution
430 a is used as loss, i.e.:

$$L(q | \mathbf{x}) = -\log \left[\sum_{k=1}^K \alpha_k(\mathbf{x}) \cdot \mathcal{N}\left(q | \mu_k(\mathbf{x}), \sigma_k(\mathbf{x})\right) \right]. \quad (\text{B2})$$

B2 Countable Mixture of Asymmetric Laplacians

Countable mixtures of asymmetric Laplacian distributions, short CMAL, are another form of MDN where asymmetric Laplacian distributions (ALDs) are used as a kernel function. The acronym is a reference to UMAL since it serves as a natural
435 intermediate intermediate stage between GMM and UMAL – as will become clear in the respective section. As far as we are aware, the use of ALDs for quantile regression was proposed by Yu and Moyeed (2001) and their application for MDNs was first proposed by Brando et al. (2019). The components of CMAL already intrinsically provide a measure for asymmetric

distributions and are therefore inherently more expressive than GMM. However, since they also necessitate the estimation of more parameters one can expect that they are also more difficult to handle than GMMs. The density for the ALD is:

$$440 \quad \mathcal{A}_{LD}(q | \mu, s, \tau) = \frac{\tau \cdot (1 - \tau)}{b} \cdot \begin{cases} \exp[-(q - \mu) \cdot (\tau - 1) / s], & \text{if } q < \mu \\ \exp[-(q - \mu) \cdot \tau / s], & \text{if } q \geq \mu \end{cases} \quad (\text{B3})$$

where τ is asymmetry parameter, μ the location parameter and s the scale parameter respectively. Using the ALD as a component CMAL can be defined in analogy to the GMM:

$$p(q | \mathbf{x}) = \sum_{k=1}^K \alpha_k(\mathbf{x}) \cdot \mathcal{A}_{LD}(q | \mu_k(\mathbf{x}), s_k(\mathbf{x}), \tau_k(\mathbf{x})), \quad (\text{B4})$$

and the parameters and weights are estimated by a Neural Network. Training is done by maximizing the negative log-likelihood of the the training data from estimated distribution:

$$L(q | \mathbf{x}) = -\log \left(\sum_{k=1}^K \alpha_k(\mathbf{x}) \cdot \mathcal{A}_{LD}(q | \mu_k(\mathbf{x}), s_k(\mathbf{x}), \tau_k(\mathbf{x})) \right). \quad (\text{B5})$$

B3 Uncountable Mixture of Asymmetric Laplacians

Uncountable Mixture of Asymmetric Laplacians (UMAL; Brando et al., 2019) expands upon the CMAL concept by letting the model implicitly approximate the mixture of ALDs. This is achieved (a) by sampling the asymmetry parameter τ and providing it as input to the model and the loss and (b) by fixing the weights with $\alpha_k = 1/K$ and (c) stochastically approximating the underlying distributions by summing up different realizations. Since the network only has to account the scale and the location parameter, considerably less parameters have to be estimated than for the GMM or CMAL.

In analogy to the CMAL model equations, these extensions lead to the following equation for the conditional density:

$$p(q | \mathbf{x}) = \frac{1}{K} \sum_{k=1}^K \mathcal{A}_{LD}(q | \mu_k(\mathbf{x}, \tau_k), s_k(\mathbf{x}, \tau_k), \tau_k), \quad (\text{B6})$$

455 where the asymmetry parameter τ_k is randomly sampled k times to provide a Monte Carlo approximation to an implicitly approximated distribution. After the training modellers can choose from how many discrete samples the learned distribution is approximated. As with the other mixture density networks the training is done by minimizing the negative log-likelihood of the training data from the estimated distribution:

$$L(q | \mathbf{x}) = -\log \left(\sum_{k=1}^K \mathcal{A}_{LD}(q | \mu_k(\mathbf{x}, \tau_k), s_k(\mathbf{x}, \tau_k), \tau_k) \right) + \log(K). \quad (\text{B7})$$

460 **B4 Monte Carlo Dropout**

Monte Carlo Dropout (MCD; Gal and Ghahramani, 2016) has found widespread and has already been used in a large variety of applications (e.g., Zhu and Laptev, 2017; Kendall and Gal, 2017; Smith and Gal, 2018). The MCD mechanism can be expressed as:

$$p(q | \mathbf{x}) = \mathcal{N}(q | \mu^*(\mathbf{x}), \sigma_k) \quad (\text{B8})$$

465 where $\mu^*(\mathbf{x})$ is the expectation over the sub-networks given the dropout rate r , such that:

$$\mu^*(\mathbf{x}) = \mathbb{E}_{\mathbf{d} \sim \mathcal{B}(r)}[f(\mathbf{x}, \mathbf{d}, \theta)] \approx \frac{1}{M} \sum_{m=1}^M f(\mathbf{x}, \mathbf{d}_m, \theta), \quad (\text{B9})$$

where \mathbf{d} is a dropout mask sampled from a Bernoulli distribution \mathcal{B} with rate r , \mathbf{d}_m is a particular realization of a dropout mask, θ are the network weights, and the $f(\cdot)$ is the neural network. Note $f(\mathbf{x}, \mathbf{d}_m, \theta)$ is equivalent to a particular sub-network of f .

470 MCD is trained by maximizing the expectancy, that is by minimizing the mean squared error. As such it is quite different from the MDN approaches. It provides an estimation of the epistemic uncertainty and as such does not supply a heterogeneous, multi modal estimate (it assumes a Gaussian form). For evaluation studies of MCD in hydrological fields we refer to Fang et al. (2019) who investigated its usage in the context of soil-moisture prediction. We also note that it has been observed that MCD can underestimate the epistemic uncertainty (e.g., Fort et al., 2019).

475 *Author contributions.* DK, FK, MG, and GN designed all experiments. DK conducted all experiments and the results were analyzed together with the rest of the authors. Fk provided the main setup for the "Accuracy" analysis; AKS and GN for the "Internal Consistency" analysis, and DK for the "Estimation Quality" analysis. GN supervised the manuscript from the hydrologic perspective, GK and SH from the machine learning perspective. All authors worked on the manuscript.

Competing interests. The authors declare that they have no conflict of interest.

480 *Acknowledgements.* This research was undertaken thanks in part to funding from the Canada First Research Excellence Fund and the Global Water Futures Program, and enabled by computational resources provided by Compute Ontario and Compute Canada. The ELLIS Unit Linz, the LIT AI Lab, and the Institute for Machine Learning are supported by the Federal State Upper Austria. We thank the projects AI-MOTION (LIT-2018-6-YOU-212), DeepToxGen (LIT-2017-3-YOU-003), AI-SNN (LIT-2018-6-YOU-214), DeepFlood (LIT-2019-8-YOU-213), Medical Cognitive Computing Center (MC3), PRIMAL (FFG-873979), S3AI (FFG-872172), DL for granular flow (FFG-871302),
485 ELISE (H2020-ICT-2019-3 ID: 951847), AIDD (MSCA-ITN-2020 ID: 956832). Further, we thank Janssen Pharmaceutica, UCB Biopharma SRL, Merck Healthcare KGaA, Audi.JKU Deep Learning Center, TGW LOGISTICS GROUP GMBH, Silicon Austria Labs (SAL), FILL Gesellschaft mbH, Anyline GmbH, Google (Faculty Research Award), ZF Friedrichshafen AG, Robert Bosch GmbH, Software Competence Center Hagenberg GmbH, TÜV Austria, and the NVIDIA Corporation.

References

- 490 Abramowitz, G.: Towards a benchmark for land surface models, *Geophysical Research Letters*, 32, 2005.
- Addor, N., Newman, A. J., Mizukami, N., and Clark, M. P.: The CAMELS data set: catchment attributes and meteorology for large-sample studies, *Hydrology and Earth System Sciences (HESS)*, 21, 5293–5313, 2017.
- Andréassian, V., Perrin, C., Berthet, L., Le Moine, N., Lerat, J., Loumagne, C., Oudin, L., Mathevet, T., Ramos, M., and Valéry, A.: Crash tests for a standardized evaluation of hydrological models, 2009.
- 495 Berthet, L., Bourgin, F., Perrin, C., Viatgé, J., Marty, R., and Piotta, O.: A crash-testing framework for predictive uncertainty assessment when forecasting high flows in an extrapolation context, *Hydrology and Earth System Sciences*, 24, 2017–2041, 2020.
- Best, M. J., Abramowitz, G., Johnson, H., Pitman, A., Balsamo, G., Boone, A., Cuntz, M., Decharme, B., Dirmeyer, P., Dong, J., et al.: The plumbing of land surface models: benchmarking model performance, *Journal of Hydrometeorology*, 16, 1425–1442, 2015.
- Beven, K.: Facets of uncertainty: epistemic uncertainty, non-stationarity, likelihood, hypothesis testing, and communication, *Hydrological Sciences Journal*, 61, 1652–1665, <https://doi.org/10.1080/02626667.2015.1031761>, <https://doi.org/10.1080/02626667.2015.1031761>, 2016.
- 500 Beven, K. and Binley, A.: GLUE: 20 years on, *Hydrological processes*, 28, 5897–5918, 2014.
- Beven, K. and Young, P.: A guide to good practice in modeling semantics for authors and referees, *Water Resources Research*, 49, 5092–5098, 2013.
- 505 Beven, K. J., Smith, P. J., and Freer, J. E.: So just why would a modeller choose to be incoherent?, *Journal of hydrology*, 354, 15–32, 2008.
- Bishop, C. M.: *Mixture density networks*, 1994.
- Blundell, C., Cornebise, J., Kavukcuoglu, K., and Wierstra, D.: Weight uncertainty in neural networks, *arXiv preprint arXiv:1505.05424*, 2015.
- Brando, A., Rodriguez, J. A., Vitria, J., and Rubio Muñoz, A.: Modelling heterogeneous distributions with an Uncountable Mixture of Asymmetric Laplacians, *Advances in Neural Information Processing Systems*, 32, 8838–8848, 2019.
- 510 Clark, M. P., Wilby, R. L., Gutmann, E. D., Vano, J. A., Gangopadhyay, S., Wood, A. W., Fowler, H. J., Prudhomme, C., Arnold, J. R., and Brekke, L. D.: Characterizing uncertainty of the hydrologic impacts of climate change, *Current Climate Change Reports*, 2, 55–64, 2016.
- Cole, T.: Too many digits: the presentation of numerical data, *Archives of Disease in Childhood*, 100, 608–609, 2015.
- Demargne, J., Wu, L., Regonda, S. K., Brown, J. D., Lee, H., He, M., Seo, D.-J., Hartman, R., Herr, H. D., Fresch, M., et al.: The science of NOAA’s operational hydrologic ensemble forecast service, *Bulletin of the American Meteorological Society*, 95, 79–98, 2014.
- 515 Ellefsen, K. O., Martin, C. P., and Torresen, J.: How do mixture density rnns predict the future?, *arXiv preprint arXiv:1901.07859*, 2019.
- Fang, K., Shen, C., and Kifer, D.: Evaluating aleatoric and epistemic uncertainties of time series deep learning models for soil moisture predictions, *arXiv preprint arXiv:1906.04595*, 2019.
- Feng, D., Fang, K., and Shen, C.: Enhancing streamflow forecast and extracting insights using long-short term memory networks with data integration at continental scales, *Water Resources Research*, 56, e2019WR026 793, 2020.
- 520 Fort, S., Hu, H., and Lakshminarayanan, B.: Deep ensembles: A loss landscape perspective, *arXiv preprint arXiv:1912.02757*, 2019.
- Gal, Y. and Ghahramani, Z.: Dropout as a bayesian approximation: Representing model uncertainty in deep learning, in: *international conference on machine learning*, pp. 1050–1059, 2016.
- Gers, F. A., Schmidhuber, J., and Cummins, F.: Learning to forget: Continual prediction with LSTM, 1999.

- 525 Gneiting, T. and Raftery, A. E.: Strictly proper scoring rules, prediction, and estimation, *Journal of the American statistical Association*, 102, 359–378, 2007.
- Govindaraju, R. S. et al.: Artificial neural networks in hydrology. II: hydrologic applications, *Journal of Hydrologic Engineering*, 5, 124–137, 2000.
- Graves, A.: Generating sequences with recurrent neural networks, arXiv preprint arXiv:1308.0850, 2013.
- 530 Gupta, H. V., Kling, H., Yilmaz, K. K., and Martinez, G. F.: Decomposition of the mean squared error and NSE performance criteria: Implications for improving hydrological modelling, *Journal of hydrology*, 377, 80–91, 2009.
- Ha, D. and Eck, D.: A neural representation of sketch drawings, arXiv preprint arXiv:1704.03477, 2017.
- Ha, D. and Schmidhuber, J.: Recurrent world models facilitate policy evolution, in: *Advances in Neural Information Processing Systems*, pp. 2450–2462, 2018.
- 535 Hochreiter, S.: Untersuchungen zu dynamischen neuronalen Netzen. Diploma thesis, Institut für Informatik, Lehrstuhl Prof. Brauer, Tech. Univ. München, 1991.
- Hochreiter, S. and Schmidhuber, J.: Long Short-Term Memory, *Neural Computation*, 9, 1735–1780, 1997.
- Hsu, K.-l., Gupta, H. V., and Sorooshian, S.: Artificial neural network modeling of the rainfall-runoff process, *Water resources research*, 31, 2517–2530, 1995.
- 540 Kavetski, D., Kuczera, G., and Franks, S. W.: Bayesian analysis of input uncertainty in hydrological modeling: 2. Application, *Water resources research*, 42, 2006.
- Kendall, A. and Gal, Y.: What uncertainties do we need in bayesian deep learning for computer vision?, in: *Advances in neural information processing systems*, pp. 5574–5584, 2017.
- Kirchner, J. W.: Getting the right answers for the right reasons: Linking measurements, analyses, and models to advance the science of hydrology, *Water Resources Research*, 42, 2006.
- 545 Klemeš, V.: Operational testing of hydrological simulation models, *Hydrological Sciences Journal*, 31, 13–24, <https://doi.org/10.1080/02626668609491024>, <https://doi.org/10.1080/02626668609491024>, 1986.
- Kratzert, F., Klotz, D., Brenner, C., Schulz, K., and Herrnegger, M.: Rainfall–runoff modelling using long short-term memory (LSTM) networks, *Hydrology and Earth System Sciences*, 22, 6005–6022, 2018.
- 550 Kratzert, F., Klotz, D., Herrnegger, M., Sampson, A. K., Hochreiter, S., and Nearing, G. S.: Toward Improved Predictions in Ungauged Basins: Exploiting the Power of Machine Learning, *Water Resources Research*, 55, 11 344–11 354, <https://doi.org/https://doi.org/10.1029/2019WR026065>, <https://agupubs.onlinelibrary.wiley.com/doi/abs/10.1029/2019WR026065>, 2019a.
- Kratzert, F., Klotz, D., Shalev, G., Klambauer, G., Hochreiter, S., and Nearing, G.: Towards learning universal, regional, and local hydrological behaviors via machine learning applied to large-sample datasets, *Hydrology and Earth System Sciences*, 23, 5089–5110, <https://doi.org/10.5194/hess-23-5089-2019>, <https://hess.copernicus.org/articles/23/5089/2019/>, 2019b.
- Kratzert, F., Klotz, D., Hochreiter, S., and Nearing, G. S.: A note on leveraging synergy in multiple meteorological datasets with deep learning for rainfall-runoff modeling, *Hydrology and Earth System Sciences Discussions*, 2020, 1–26, <https://doi.org/10.5194/hess-2020-221>, <https://hess.copernicus.org/preprints/hess-2020-221/>, 2020.
- 560 Laio, F. and Tamea, S.: Verification tools for probabilistic forecasts of continuous hydrological variables, *Hydrology and Earth System Sciences*, 11, 1267–1277, 2007.

- Lane, R. A., Coxon, G., Freer, J. E., Wagener, T., Johnes, P. J., Bloomfield, J. P., Greene, S., Macleod, C. J., and Reaney, S. M.: Benchmarking the predictive capability of hydrological models for river flow and flood peak predictions across over 1000 catchments in Great Britain, *Hydrology and Earth System Sciences*, 23, 4011–4032, 2019.
- 565 Li, W., Duan, Q., Miao, C., Ye, A., Gong, W., and Di, Z.: A review on statistical postprocessing methods for hydrometeorological ensemble forecasting, *Wiley Interdisciplinary Reviews: Water*, 4, e1246, 2017.
- Liu, M., Huang, Y., Li, Z., Tong, B., Liu, Z., Sun, M., Jiang, F., and Zhang, H.: The Applicability of LSTM-KNN Model for Real-Time Flood Forecasting in Different Climate Zones in China, *Water*, 12, 440, 2020.
- Montanari, A. and Koutsoyiannis, D.: A blueprint for process-based modeling of uncertain hydrological systems, *Water Resources Research*, 570 48, 2012.
- Muller, J. Z.: *The tyranny of metrics*, Princeton University Press, 2018.
- Naeini, M. P., Cooper, G. F., and Hauskrecht, M.: Obtaining well calibrated probabilities using bayesian binning, in: *Proceedings of the... AAAI Conference on Artificial Intelligence*. AAAI Conference on Artificial Intelligence, vol. 2015, p. 2901, NIH Public Access, 2015.
- Nash, J. E. and Sutcliffe, J. V.: River flow forecasting through conceptual models part I—A discussion of principles, *Journal of hydrology*, 575 10, 282–290, 1970.
- Nearing, G. S. and Gupta, H. V.: The quantity and quality of information in hydrologic models, *Water Resources Research*, 51, 524–538, 2015.
- Nearing, G. S., Mocko, D. M., Peters-Lidard, C. D., Kumar, S. V., and Xia, Y.: Benchmarking NLDAS-2 soil moisture and evapotranspiration to separate uncertainty contributions, *Journal of hydrometeorology*, 17, 745–759, 2016.
- 580 Nearing, G. S., Ruddell, B. L., Clark, M. P., Nijssen, B., and Peters-Lidard, C.: Benchmarking and process diagnostics of land models, *Journal of Hydrometeorology*, 19, 1835–1852, 2018.
- Nearing, G. S., Kratzert, F., Sampson, A. K., Pelissier, C. S., Klotz, D., Frame, J. M., Prieto, C., and Gupta, H. V.: What role does hydrological science play in the age of machine learning?, *Water Resources Research*, p. e2020WR028091, 2020a.
- Nearing, G. S., Ruddell, B. L., Bennett, A. R., Prieto, C., and Gupta, H. V.: Does Information Theory Provide a New Paradigm for Earth 585 Science? Hypothesis Testing, *Water Resources Research*, 56, e2019WR024918, 2020b.
- Newman, A., Clark, M., Sampson, K., Wood, A., Hay, L., Bock, A., Viger, R., Blodgett, D., Brekke, L., Arnold, J., et al.: Development of a large-sample watershed-scale hydrometeorological data set for the contiguous USA: data set characteristics and assessment of regional variability in hydrologic model performance, *Hydrology and Earth System Sciences*, 19, 209, 2015.
- Newman, A. J., Mizukami, N., Clark, M. P., Wood, A. W., Nijssen, B., and Nearing, G.: Benchmarking of a physically based hydrologic 590 model, *Journal of Hydrometeorology*, 18, 2215–2225, 2017.
- Paszke, A., Gross, S., Massa, F., Lerer, A., Bradbury, J., Chanan, G., Killeen, T., Lin, Z., Gimelshein, N., Antiga, L., et al.: Pytorch: An imperative style, high-performance deep learning library, in: *Advances in neural information processing systems*, pp. 8026–8037, 2019.
- Reichle, R. H., McLaughlin, D. B., and Entekhabi, D.: Hydrologic data assimilation with the ensemble Kalman filter, *Monthly Weather Review*, 130, 103–114, 2002.
- 595 Renard, B., Kavetski, D., Kuczera, G., Thyer, M., and Franks, S. W.: Understanding predictive uncertainty in hydrologic modeling: The challenge of identifying input and structural errors, *Water Resources Research*, 46, 2010.
- Richmond, K., King, S., and Taylor, P.: Modelling the uncertainty in recovering articulation from acoustics, *Computer Speech & Language*, 17, 153–172, 2003.

- Rothfuss, J., Ferreira, F., Walther, S., and Ulrich, M.: Conditional density estimation with neural networks: Best practices and benchmarks, arXiv preprint arXiv:1903.00954, 2019.
- 600 Shrestha, D. L. and Solomatine, D. P.: Data-driven approaches for estimating uncertainty in rainfall-runoff modelling, *International Journal of River Basin Management*, 6, 109–122, <https://doi.org/10.1080/15715124.2008.9635341>, <https://doi.org/10.1080/15715124.2008.9635341>, 2008.
- Smith, L. and Gal, Y.: Understanding measures of uncertainty for adversarial example detection, arXiv preprint arXiv:1803.08533, 2018.
- 605 Thomas, R. and Uminsky, D.: The Problem with Metrics is a Fundamental Problem for AI, arXiv preprint arXiv:2002.08512, 2020.
- Weijs, S., Schoups, G. v., and Van De Giesen, N.: Why hydrological predictions should be evaluated using information theory, *Hydrology and Earth System Sciences*, 14, 2545–2558, 2010.
- Yilmaz, K. K., Gupta, H. V., and Wagener, T.: A process-based diagnostic approach to model evaluation: Application to the NWS distributed hydrologic model, *Water Resources Research*, 44, 2008.
- 610 Yu, K. and Moyeed, R. A.: Bayesian quantile regression, *Statistics & Probability Letters*, 54, 437–447, 2001.
- Zhu, L. and Laptev, N.: Deep and confident prediction for time series at uber, in: *2017 IEEE International Conference on Data Mining Workshops (ICDMW)*, pp. 103–110, IEEE, 2017.
- Zhu, S., Xu, Z., Luo, X., Liu, X., Wang, R., Zhang, M., and Huo, Z.: Internal and external coupling of Gaussian mixture model and deep recurrent network for probabilistic drought forecasting, *International Journal of Environmental Science and Technology*, pp. 1–16, 2020.