

Bayesian Dynamic Finite-Fault Inversion:

1. Method and Synthetic Test

F. Gallovič^{1*}, Ľ. Valentová¹, J.-P. Ampuero², A.-A. Gabriel³

¹ Charles University, Faculty of Mathematics and Physics, Dept. of Geophysics, V Holešovičkách 2, Praha 8, 18000, Czech Republic

² Université Cote d'Azur, IRD, CNRS, Observatoire de la Cote d'Azur, Géoazur, 250 rue Albert Einstein, CS 10269 - F 06905 Sophia Antipolis Cedex, France

³ Ludwig-Maximilians-Universität München, Geophysics, Department of Earth and Environmental Sciences, Theresienstr. 41, 80333 München, Germany

* Contact author: gallovic@karel.troja.mff.cuni.cz

Main point #1:

A novel Bayesian dynamic earthquake source inversion with spatially variable prestress and slip-weakening friction parameters is introduced.

Main point #2:

Application to community benchmark test shows that the dynamic inversion reduces the uncertainty of kinematic parameters.

Main point #3:

Physics-based constraints reduce the non-uniqueness of slip inversions provided highly efficient dynamic rupture solvers are utilized.

This is a non-peer-reviewed preprint submitted to EarthArXiv.

Abstract

Dynamic earthquake source inversions aim to determine the spatial distribution of initial stress and friction parameters leading to dynamic rupture models that reproduce observed ground motion data. Such inversions are challenging, particularly due to their high computational burden, thus so far only few attempts have been made. Here we introduce a novel method providing a representative sample of acceptable dynamic models at an affordable computational cost, from which dynamic source parameters and their uncertainties can be assessed. The method assumes a linear slip-weakening friction law and spatially variable prestress, strength and critical slip weakening distance along the fault. The inverse problem is formulated in a Bayesian framework and the posterior probability density function is sampled using the Parallel Tempering Monte Carlo algorithm. We use a highly efficient forward solver combining 3D finite difference code for dynamic rupture simulation on a simplified geometry to compute slip rates, and pre-calculated Green's functions to compute ground motions. We demonstrate the performance of the proposed method on a community benchmark test for source inversion. We find that the dynamic parameters are resolved well within the uncertainty, especially in large slip areas. The overall relative uncertainty of the dynamic parameters is rather large, reaching $\sim 50\%$ of the averaged values. In contrast, the kinematic rupture parameters (rupture times, rise times, slip values), also well-resolved, have relatively lower uncertainties of $\sim 10\%$. We conclude that incorporating physics-based constraints, such as an adequate friction law, may serve also as an effective constraint on the rupture kinematics in finite-fault inversions.

1. Introduction

Finite-fault earthquake source inversions are typically based on a kinematic description of the rupture process. The source at each point on the fault is parameterized in terms of a slip rate function, either with prescribed shape in non-linear inversions (Ji et al., 2002; Piatanesi et al., 2007; Monelli and Mai, 2008; Cirella et al., 2009) or as a linear combination of triangular basis functions in linear inversions (Hartzell and Heaton, 1983; Delouis et al., 2002; Olson and Anderson, 1988; Frankel and Wennerberg, 1989; Sekiguchi et al., 2002; Gallovič et al., 2009; Gallovič and Zahradník, 2011; Fan et al., 2014; Gallovič et al., 2015; Song and Dalguer, 2017). The result of kinematic source inversion is a model (or set of models) describing the space-time distribution of slip rate along the fault, from which the rupture propagation can be interpreted. It is generally accepted that such solutions are strongly non-unique due to the ill-conditioning of the kinematic inverse problem (e.g., Clévéde et al., 2004; Hartzell et al., 2007; Zahradník and Gallovič, 2010; Gallovič and Zahradník, 2011; Shao and Ji, 2012; Gallovič and Ampuero, 2015; Mai et al., 2016). Moreover, kinematic models provide only limited access to the physical properties that control rupture nucleation, propagation and arrest, such as the state of stress on the fault and its friction properties. Indeed, the inference of dynamic parameters from kinematic ones is non-trivial, and depends on assumptions made in the kinematic inversion on, e.g., the shape of the slip rates or model smoothness (Tinti et al., 2009).

The dynamic description of earthquake sources is mostly based on small-scale laboratory experiments and theoretical considerations. The appropriate form of the constitutive law that describes the relationship between the fault stress and slip is a topic of intense research. Widely applied empirical friction laws, such as the slip-weakening and rate-and-state friction laws, are derived from small-scale laboratory experiments (Brace and Byerlee, 1966; Ruina, 1983; Niemeijer et al., 2010; Ohnaka, 2013; etc.), and a proper scaling of the frictional parameters to larger magnitude events is a subject of intense research (e.g., Viesca and Garagash, 2015).

Therefore, it is desirable to infer dynamic rupture parameters of an assumed friction law directly from the observed data. Such inferred model parameters have the potential to shed new light on earthquake physics.

There are several viable approaches to build physics-based earthquake source models consistent with non-linear rupture dynamics. The most general approach, so-called dynamic source inversion, aims to optimize the spatial distribution of initial stress and frictional parameters along the fault such that the resulting dynamic rupture produces ground motions that fit observed data. Such inversions are particularly challenging due to their high computational burden. So far only few attempts have been made (Corish et al., 2007; Peyrat and Olsen, 2004; Fukuyama and Mikumo, 1993). In particular, Corish et al. (2007) and Peyrat and Olsen (2004) considered constant parameters of the friction law and piecewise constant spatial distributions of prestress. To improve the computational efficiency, some have considered parsimonious parameterizations, such as models consisting of one or two patches with dynamic parameters having uniform or Gaussian spatial distributions (e.g., Twardzik et al., 2014; Ruiz and Madariaga, 2011). A more common approach is to build a dynamic model from previously inferred kinematic source models (Ulrich et al., 2018; Weng and Yang, 2018; Tanircaan et al., 2017; Peyrat et al., 2001; Olsen et al., 1997; Ide and Takeo, 1996), or to analyze slip, slip rate and stresses computed from kinematic source models to constrain the governing friction law (Goto et al., 2012, Burjánek and Zahradník, 2007; Guatteri et al., 2001; Bouchon, 1997; etc.). Information gained is then used to constrain a detailed dynamic model of the studied earthquake. However, such models can be biased by the choice of inversion constraints, e.g., smoothing in the kinematic inversions (Tinti et al., 2009). Therefore, we opt to use the dynamic source inversion with general description of dynamic source parameters, but capitalizing on recent computational advances.

In general, dynamic inversion is a computationally demanding task for two reasons. First, each forward problem, a rupture simulation for a given set of dynamic source parameters, is a computationally intensive task. Second, due to the strongly non-linear relation between the observed data and the dynamic parameters, the model space has to be explored with a general technique, such as a Monte Carlo approach, which requires a large number of (expensive) forward calculations. In this paper we propose ways to tackle both of these problems in very efficient ways to make the dynamic inversion feasible.

Estimates of the uncertainties associated with the earthquake source inversion results are essential to guarantee the reliability and assess the limits of the interpretation of the inferred models. The Monte Carlo approach in the Bayesian framework is suitable to treat a highly non-linear forward problem such as dynamic rupture. In a probabilistic sense it combines prior information on the model parameters and constraints provided by the observed data, yielding a posterior probability density function (PDF) that carries information on both the optimal model and its uncertainty. The posterior PDF is typically explored by sampling utilizing a Markov chain Monte Carlo (MCMC) technique. The Bayesian approach has been already applied to kinematic slip inversions (Duputel et al., 2015, Monelli and Mai, 2008), yet to the best of our knowledge, it has not been utilized in dynamic source inversion studies as done here. Corish et al. (2007), Ruiz and Madariaga (2013) and Peyrat and Olsen (2004) used the neighborhood algorithm to perform model search in the parameter space in their dynamic inversions.

In the present paper we introduce a finite-fault dynamic source inversion approach including evaluation of parameter uncertainties by means of Bayesian inference. We have developed a code (fd3d_pt) for this purpose, consisting of two major components: i) a direct solver, which, for a given distribution of the dynamic source parameters along the fault (initial stress, strength and critical slip-weakening distance), solves the rupture propagation and

predicts the data that would have been observed by the receivers, and ii) a Monte Carlo Parallel Tempering module that samples the posterior PDF in the model space to provide a model that best fits the observed data and the model’s uncertainty. After describing the method in Section 2, in Section 3 we demonstrate its performance on the community benchmark Inv1 of the Source Inversion Validation project (Mai et al., 2016). We describe how the inversion is started from a model estimated from preliminary kinematic inversion for more efficient Monte Carlo sampling. In Section 4 we summarize lessons learned from the synthetic test. We discuss the uncertainty of the dynamic model parameters in relation with that of the kinematic parameters, pointing out that dynamic source inversions can be viewed as kinematic inversions constrained by the assumed friction law. The remaining question is how well can a dynamic model with finely tuned parameters fit data of a real, well-observed event. This is demonstrated in our companion paper (Galovič et al., submitted to JGR) by performing a dynamic inversion of the Mw6.2 2016 Amatrice, Central Italy, earthquake.

2. Method

The structure of this section is as follows. After introducing the Bayesian formulation of our dynamic inversion in Sec. 2.1, we detail the choice of our model parameterization in Sec. 2.2. Sec. 2.3 describes the highly efficient dynamic rupture code used to solve the forward problem. In Sec. 2.4 we describe the Parallel Tempering Monte Carlo approach that is employed to sample the posterior PDF.

2.1. Bayesian formulation of the inverse problem

In the Bayesian framework (Tarantola, 2005; Tarantola and Valette 1982; etc.), probabilistic information on model parameters \mathbf{m} and on the fit between modeled and observed data \mathbf{d} , namely their respective probability density functions (PDFs), are combined to get a posterior PDF of the model. Denoting the prior PDF $p(\mathbf{m})$ and the PDF of data \mathbf{d} given the model parameters as $p(\mathbf{d}|\mathbf{m})$, the posterior PDF $p(\mathbf{m}|\mathbf{d})$, which is the solution of the inverse problem, reads

$$p(\mathbf{m}|\mathbf{d}) = p(\mathbf{m})p(\mathbf{d}|\mathbf{m})/p(\mathbf{d}), \quad (1)$$

where the Bayesian evidence $p(\mathbf{d})$ serves as a normalization constant.

The prior PDF $p(\mathbf{m})$ is specified (in the next section) by constraints on the plausible values of the model parameters, assumed or derived independently of the current data measurements. The PDF of the data (observed waveforms) given a model, $p(\mathbf{d}|\mathbf{m})$, is assumed to be Gaussian with diagonal covariance function:

$$p(\mathbf{d}|\mathbf{m}) = c_1 \exp\left(-\frac{1}{2} \sum_{i=1}^N \frac{\|s_i(\mathbf{m}) - d_i\|^2}{\sigma_i^2}\right). \quad (2)$$

Here d_i and $s_i(\mathbf{m})$ are observed data and synthetics at station i , respectively, and N is the number of stations. The symbol $\|\cdot\|$ denotes the L2 norm and σ_i are the assumed standard deviations of the observed waveforms.

2.2. Model parameterization

We assume that the rupture nucleation, propagation and arrest are governed by the linear slip-weakening friction law (Fig. 1A) with spatially inhomogeneous parameters, and by spatially variable prestress (also called initial stress). Slip at a given point starts when the stress reaches the local strength τ_s given by the static coefficient of friction μ_s multiplied by the normal stress σ . The normal stress is the sum of a prescribed static depth profile (Fig. 1B, Tab. 1) and a dynamic time-dependent component due to seismic radiation. Upon slip, the friction coefficient decays linearly with slip D until the critical slip-weakening distance D_c is reached. With further slip the friction coefficient remains constant and equal to the dynamic friction coefficient μ_d .

We assume that the actual value of μ_d does not affect the simulations significantly, and thus we set it to zero without loss of generality. This implies that we consider shear stresses relative to the dynamic strength $\mu_d \sigma$, we ignore the effect of time-dependent normal stress changes on dynamic strength, and we ignore rake rotations caused by shear stress changes comparable to the dynamic strength. The parameters subject to the inversion are the prestress τ_i , the critical slip-weakening distance D_c , and the difference between the static and dynamic friction coefficients $\mu_s - \mu_d$, also called friction drop. Note that the latter can be converted to breakdown stress drop $\tau_s - \tau_d$ by multiplication by the normal stress.

All the model parameters are considered to be functions of spatial coordinates along the fault. For computational feasibility we limit their potential variability along the fault by defining them as fields bilinearly interpolated from a relatively coarse grid of control points (see Fig. 1C).

2.3. Forward problem

To speed up the forward problem, we separate the calculation of synthetic waveforms into two steps: dynamic rupture simulation of the rupture propagation and evaluation of the representation integral using pre-computed Green's functions (e.g., Ruiz and Madariaga, 2011; Twardzik et al., 2014). In this way, we minimize the computational cost of the dynamic rupture simulation by carrying it on a computational domain limited to the close surrounding of the fault. Moreover, solving both dynamic rupture and wave propagation with the same finite difference method (with uniform grid size) would be a waste of resources, since the grid size required to resolve dynamic rupture is smaller than the one required to resolve wave propagation at the desired frequency. Details of the two steps are as follows.

In the first step, the dynamic rupture simulation is carried out on a dense grid of finite-difference nodes (Fig. 1C). The input dynamic rupture parameters are bilinearly interpolated from a coarse grid of model control points onto the dense finite-difference grid. In the second step, the resulting slip rates are spatially averaged onto the coarser grid of subfaults (Fig. 1C) in which Green's functions have been pre-calculated and stored. Waveforms are then calculated following the representation theorem (Aki and Richards, 2002), i.e. by summing up contributions from the individual subfaults obtained as convolution of the individual averaged slip rates with the respective Green's functions. For the actual grid parameters considered in the present study see Tab. 1.

Despite the effectiveness of the described approach, we still need an extremely efficient dynamic rupture simulator. We employ finite-difference code FD3D developed at UCSB and ENS by K.B. Olsen, R. Madariaga and R. Archuleta (Madariaga et al., 1998). The 3D elastodynamic equation is solved in a uniformly discretized box covering the fault using a 4th

order staggered-grid velocity-stress method (Madariaga et al., 1998) with boundary condition applied on the fault to obey the slip-weakening friction law formulated in the thin fault approximation (e.g. Dalguer and Day, 2006). To speed-up the calculations, the fault is considered to be vertical, aligned with one side of the computational box, where symmetry conditions are applied in order to solve the problem only on half of the volume. On the top of the box we prescribe free-surface boundary conditions by the stress-imaging technique (Levander, 1988; Graves, 1996; Kristek et al., 2002). On all the other sides we apply absorbing boundary conditions of the Clayton-Engquist type (Clayton and Engquist, 1977). A one-dimensional layered elastic velocity structure is assumed. The actual fault we aim to simulate is not vertical as in the FD3D code. To partially correct for this difference, we vertically stretch the velocity model in order to respect the original along-dip position of the fault intersections with the velocity model layers.

For obvious reasons the solution of the rupture simulation obtained by the FD3D code is an approximation to the true solution. This compromise is made to achieve an extreme speed-up of the dynamic rupture simulation (see below). We emphasize that the typical high computational demand of more complete dynamic rupture simulation codes prohibits their use for dynamic source inversion as formulated here.

Nevertheless, it is necessary to verify that the inverted model (or here the target model) is simulated sufficiently well by our simplified approach. We compare the rupture simulation calculated by FD3D and by the more advanced code WaveQLab3D (Duru and Dunham, 2016), which has been verified in many community dynamic rupture benchmarks (Harris et al., 2018). WaveQLab3D simulates the first order form of the 3D elastic wave equation in collocated curvilinear grids. The mesh is discretized in space using high order accurate finite difference schemes satisfying the Summation-By-Parts rule (6th order accurate central finite difference stencils in the interior with one-sided 3rd order accurate boundary closures). The time discretization makes use of a 4th order accurate low-storage Runge-Kutta approach. Boundary conditions and frictional interfaces are imposed weakly using penalties, resulting in a provably energy-stable scheme. WaveQLab3D handles fault boundary conditions as tractions at split nodes and uses perfectly matched layers as absorbing boundaries.

For this test we consider the Inv1 benchmark of the Source Inversion Validation initiative (Mai et al., 2016, Fig. 2, see Sec. 4 for more details). Fig. 3 shows the along fault distribution of the dynamic parameters of the target model. The WaveQLab3D simulation respects the actual fault geometry, dynamic normal stress changes, etc. but is $\sim 300x$ slower than the FD3D simulation: while WaveQLab3D requires 6 hours on a recent 8-core CPU, FD3D requires only 10 minutes on a single-core CPU. Both simulations use a spatial resolution of 100 m (across the fault) and similar domain size.

Snapshots of the resulting rupture propagation are compared in Fig. 4A. Figs. 4B-C show comparisons of the simulated final slip distributions and slip rates. The main features of the rupture propagation are well captured by the FD3D simulator. In the WaveQLab3D results the rupture is slightly faster owing to its better resolution of dynamic stress changes along the rupture front. Peak slip rates are higher in the WaveQLab3D results. Nevertheless, this difference does not affect significantly ground motions in our frequency range of interest due to the low-pass filtering (Fig. 5). Importantly, all discrepancies are smaller than the inversion uncertainties (quantified later), thus, for our purposes we judge they are largely offset by the extreme gain in computational efficiency provided by the use of FD3D.

Moreover, thanks to the relative simplicity of the FD3D code, it was straightforwardly ported to Graphics Processing Units (GPU) using OpenACC directives, which are implemented in the Portland Fortran compiler. The additional speed up achieved by the GPU (NVIDIA GTX

Titan) compared to the single-core CPU run is a factor of about 5. One dynamic rupture simulation is completed within approximately 2 minutes.

Synthetic Green's functions for a given set of stations (Fig. 2A) are calculated by the Axitra code, which combines discrete wave number and propagator matrix methods (Bouchon, 1981; Coutant, 1989; Kennett & Kerry, 1979). The 1-D velocity model is the one prescribed in the definition of the Inv1 benchmark (see Fig. 2B). In Fig. 5 we show a comparison of displacement seismograms computed from the FD3D and WaveQLab3D results, assuming the dynamic parameters of the target model, in the frequency range 0.05-0.50 Hz that will be considered later in the inversion. The waveforms agree very well, the variance reduction (in the data space) reaches 0.94.

2.4. Sampling of the posterior PDF

Markov Chain Monte Carlo (MCMC) methods are widely used in the Bayesian framework to sample the posterior PDF in model space (see, e.g., the review by Sambridge and Mosegaard, 2002). The main advantage is that the set of acquired models represents samples randomly drawn following the posterior PDF. This set can be then directly used in a subsequent statistical analysis of the model uncertainty. We note that the statistical analysis does not have to be limited to the inferred dynamic rupture parameters, but can be also applied to other derived quantities, such as the resulting kinematic rupture parameters.

Generally, the MCMC approach works as follows. In each step of the chain, the model parameters (prestress, friction drop and D_c) are randomly perturbed considering log-normal probability density functions. The new proposed model is checked against the priors. If its parameters exceed their prior bounds or if negative strength excess is present outside the prescribed nucleation area, the model is immediately discarded, without running the corresponding dynamic simulation, and a new model is generated. Otherwise, the dynamic simulation is run and the waveform misfit is evaluated (and thus the corresponding posterior PDF value of Eq. (2)). The proposed model is accepted or rejected based on the Metropolis algorithm: if the posterior PDF value of the proposed model is higher than that of the unperturbed one, the model is accepted; if the PDF value is lower, the model may be still accepted with probability given by the Metropolis-Hastings rule (Metropolis et al., 1953).

Here we use a quite novel modification of the MCMC method - the parallel tempering (Falcioni and Deem, 1999; Sambridge, 2013; etc.). It is similar to simulated annealing, as the posterior PDF (Eqs. (1) and (2)) is modified by a parameter temperature T :

$$p(\mathbf{m}|\mathbf{d}, T) = c_1 p(\mathbf{m}) \exp\left(-\frac{1}{T} \frac{1}{2} \sum_{i=1}^N \frac{\|s_i(\mathbf{m}) - \mathbf{d}_i\|^2}{\sigma_i^2}\right). \quad (3)$$

The higher is the temperature the smoother is the modified PDF, so that the Markov chains at higher T can more easily skip local minima thanks to a larger likelihood of acceptance of the advance step. Unlike in simulated annealing, where temperature T gradually decreases in an ad-hoc way, in the parallel tempering method a set of Markov chains with different temperatures advance through the model space. To ensure sufficient sampling of the model space, the chains are allowed to exchange temperature values following a modified Metropolis-Hastings rule. Samples of the posterior PDF are then obtained from chains at temperature $T=1$. In a synthetic example, Sambridge (2013) showed that the tempered chains may converge at least 10 times faster than the non-tempered MCMC approach.

3. Application to a synthetic test

The Source Inversion Validation (SIV) initiative formulated a set of community benchmarks to assess the performance of earthquake-source inversion methods and to understand strengths and weaknesses in determining models and their uncertainties (Mai et al., 2016; <http://equake-rc.info/SIV/>). Although initially the tests were defined for kinematic inversions, we take advantage of the fact that the first benchmark, Inv1, is based on a spontaneous dynamic rupture simulation. Waveforms to be inverted were calculated on a set of stations (Fig. 2A) assuming a 1D velocity profile (Fig. 2B). Note that the aim of our dynamic inversion is not only to infer dynamic parameters along the fault, but also to test the performance of the frictional model as a constraint to regularize the inverse problem.

3.1. Target model and waveforms

The Inv1 benchmark target model is a strike-slip rupture on a fault plane dipping at 80° and reaching the surface, with dynamic parameters distributed as displayed in Fig. 3. While the prestress is variable along the fault, the dynamic and static friction coefficients are constant at 0.60 and 0.55, respectively; the friction drop is 0.05. The critical slip-weakening distance D_c is essentially constant, 0.4 m, in the region where the rupture takes place (approximately in the center of the fault), and it linearly increases to 5 m towards the fault boundaries to ensure smooth rupture termination. The rupture starts from a small nucleation region with negative strength excess and $D_c=0.2$ m (see Fig. 4). The final seismic moment M_0 is approximately 1×10^{19} Nm (Mw 6.6). The data can be downloaded from the SIV web server. To ensure consistency, we recalculated the target model waveforms using the WaveQLab3D code and the initial conditions provided in the benchmark. We obtain a perfect fit with the downloaded waveforms. For the inversion, we use displacements filtered in the frequency range 0.05-0.50 Hz (see Fig. 5).

3.2. Inversion setup

In the inversion we use exactly the same fault plane geometry, spatial and temporal discretization and Green's functions as when generating the benchmark data. We pretend we only have an approximate knowledge of the position of the nucleation, which serves as one of the prior constraints. For the complete list of assumed priors see Tab. 1.

In an ideal situation the MC Markov chains are started from randomly selected models and allowed to explore the model space automatically for a very long time. Due to the limited computational resources and the complexity of the posterior PDF, e.g., having vast 'no-rupture' areas, we modified the automatic procedure to accelerate the convergence to reasonable solutions as briefly described in the following.

We started from a slip model obtained by linear kinematic inversion using the code LinSlipInv (Gallovič et al., 2015, Sokos et al., 2016, Pizzi et al., 2017). The stress drop distribution, $\Delta\tau$, was computed from the slip model using the static dislocation solutions in a homogenous half space by Okada (1992). The resulting stress drop was considered as an initial model for prestress by setting $\tau_i = \mu_d \sigma + \Delta\tau$. Then the other parameters were manually adjusted to obtain rupture propagation from the hypocentral area without reaching the surface. The latter required to set D_c to larger values in the upper ~ 5 km (we note that this does not prevent the inversion from finding models breaking the surface because the D_c values at the shallow depths are still part of the inversion). At this point the data fit was only decent; its variance reduction

(VR) was slightly above zero. Then we used the parallel tempering approach to allow the model to improve the waveform fit. Prior limits considered on the values of the dynamic parameters are specified in Tab. 1. Since at this point we needed a huge amount of models to be tested, as the PDF is rather flat far from the optimum model, we used a twice coarser discretization in the FD3D code (leading to 16 times faster calculations).

Once VR increased to ~ 0.8 , we switched to the discretization specified in Tab. 1 and let the parallel tempering explore the model space for a much longer time. We stopped the inversion several times, selected the actual best-fitting model and used it as a new starting model for the next iteration of the inversion. Once VR reached values larger than 0.9, we started the final and most extensive *exploitation* of the model space (Sambridge and Mosegaard, 2002). Overall, we used $\sim 10,000$ MCMC chains with randomly distributed temperatures up to 100, where about 1/5 were at temperature 1. These chains visited a total of $\sim 1,000,000$ models. Every 10th step of the Markov chain the models at $T=1$ were saved. The final set consists of ~ 5000 model samples representing the random draws from the posterior PDF. In all the calculations we combined ~ 14 days long runs on Xeon supercomputer cluster IT4I (~ 200 CPUs) and our local farm of 10 GPU cards. This makes our approach very feasible in terms of man-hours as well as hardware requirements with standard present day resources.

3.3. Inversion results

Fig. 6A shows histograms of data VR for the final ensemble of ~ 5000 samples representing the posterior PDF. The VRs range from 0.9 to 0.97 of the best-fitting model. In the following we consider only models having a posterior PDF value larger than 0.1% of the PDF maximum, to ignore model samples that do not fit the data sufficiently. This way we end up with an ensemble of so-called accepted models whose distribution of VR is shown in the red histogram of Fig. 6A.

First we discuss the properties of the ensemble of rupture models as they represent the full outcome of the Bayesian inversion. Since the aim of the synthetic test is to find models that are close to the target model, we evaluate for each model sample its so-called model VR that expresses the differences between the model slip-rate functions and those of the target model, after the under-discretization to the Green's functions subfault grid (see Tab. 1 and Fig. 1c). The resulting model VRs are shown as histograms in Fig. 6B. The values range from -0.1 to 0.7. We note that the model that best fits the target data, has a data VR of 0.97 and a model VR of 0.3. Conversely, the rupture model with the largest model VR (0.71) has a data VR of 0.94. This suggests that the best fitting solution is biased, both due to the use of a diverse parameterization of the target and inverse models and the use of less precise forward solver. Properties of the model with the largest model VR are examined later on.

Fig. 7A displays the main rupture parameters (slip, stress drop and rise time) along the fault averaged over the accepted solutions (middle column) and their uncertainty quantified as 2 times the standard deviation (2 sigma, right column), compared with those of the target model (left column). The main characteristics of the target model are captured by the mean model, such as the basic shape of the main slip patch, largest stress drop in the hypocentral area and rise times within the main slip patch. Nevertheless, some details of the target model are not present in the mean model. For example, in the mean model the larger slip patch extends more to the left, the slip of the target model seems to reach shallower depths, the localized relatively large values of rise times in the target model are less visible in the mean model. However, when taking into account the uncertainty of the models (right column), most of these apparent discrepancies are actually well within the estimated errors. For example, the large values of rise

time present in the target model but missing in the mean model correspond to areas with large slip uncertainty.

The uncertainty of the actual rupture extent is displayed in Fig. 7B, showing slip contours of all the accepted models. The uncertainty is smaller than the variability among models inferred by various modelers as shown in Mai et al. (2016). For a few model samples the rupture continues slightly to the surface and also to the bottom of the fault as in the target rupture model. The elevated uncertainties along the contour of the mean slip and stress drop (Fig. 7A) are related to the variability of the fault rupture extent in the ensemble of accepted models (Fig. 7B). The overall uncertainties of the rupture parameters within the slip patch are approximately ~10% of the average values.

In Fig. 8A we compare the slip rates of the target model with those of the model sample that is closest to the target model in terms of the slip rates, i.e. with the highest model VR. The slip rates agree very well, especially in the high slip region. For this model sample the rupture, however, stops somewhat earlier on the left side of the fault. Nevertheless, as demonstrated in Fig. 7B, there are other models in the posterior ensemble, for which the rupture propagates even further than the target model. We highlight, that our approach does allow spontaneous, non-prescribed rupture stopping, which was identified as one of the biggest challenges in previous dynamic source inversion approaches (e.g., Madariaga and Ruiz, 2016).

We now compare the inferred dynamic rupture parameters, the main outcome of the present inversion. For the model discussed above, Fig. 8B shows the along-fault distribution of prestress, friction drop, D_c and strength drop (the product of the friction drop and the depth-dependent normal stress). These plots are to be compared with those of the target model shown in Fig. 3 and in the left column of Fig. 9. The dynamic parameters inferred outside the ruptured area (at the fault edges) are essentially unconstrained: obviously, such areas do not affect the rupture propagation, thus have no effect on the radiated wavefield and are inaccessible to the inversion. Consequently, the uncertainty of the dynamic parameters in such areas is rather large as discussed later.

The prestress values are correctly largest in the hypocentral area. Also within 10-15 km to the left along strike they are well determined. Nevertheless, further away and also at shallower depths the prestress is overestimated, while in the deepest part the prestress misses the locally elevated values of the target model. The friction drop of this particular model sample exhibits pronounced heterogeneity although in the target model this parameter is constant along the fault. The inferred values range between 0.03 and 0.1, i.e. around the true value of 0.05. The distribution of D_c of the discussed model is also heterogeneous along the fault, although to a lesser extent than the friction drop. While in the target model D_c is smaller only in the nucleation patch, in the inverted model sample D_c is smaller over a larger area in the nucleation region. This is perhaps compensated by the patch of overestimated values of D_c near the middle of the fault. The large values of D_c in the uppermost part is perhaps a remnant from the initial inversions performed to find a good starting model for the final round of the MCMC inversion (see Sec. 4.2). The large values of D_c at the bottom of the target model are not captured in the model sample. The inverted strength drop exhibits a slightly larger nucleation patch with larger overstress than prescribed in the target model. Further away from the nucleation the strength excess is relatively well resolved, perhaps with somewhat overestimated heterogeneities at the edges of the ruptured region. To summarize, the dynamic parameters of this particular model sample seem to be well resolved in the area of the largest slip, while some disagreement appears towards the edges of the slip distribution.

The above described properties of the inverse solution were related to a single sample model drawn from the full posterior PDF. However, in the Bayesian approach we should interpret the

results of the inversion by analyzing the whole ensemble of model samples to take into account the inherent uncertainty. For this reason, Fig. 9 compares the dynamic parameters of the target model (left column) with the ensemble averaged values (middle column) and their uncertainties quantified as twice the standard deviations (right column). The distribution of the averaged prestress resembles that of the target model in the nucleation area and its vicinity within ~ 10 km. At shallower depths the averaged prestress is overestimated, while the higher prestress patch in the bottom of the target model is underestimated. The prestress uncertainty seems approximately constant along the slip patch, being largest in the nucleation area. The friction drop, which is constant in the target model, seems to increase outwards from the nucleation area. Unlike the almost constant prestress uncertainty, the uncertainty of the friction drop increases from the nucleation area towards the edges of the slip patch, balancing the bias of the overestimated average values. The averaged distribution of strength excess captures the presence of increased values around the left, right and bottom edges of the main slip patch, but the values are rather overestimated. Nevertheless, this is also balanced by the estimated uncertainty. The distribution of D_c seems less heterogeneous than in the case of the single PDF sample of Fig. 8. The remaining locally elevated values of D_c in the averaged model are collocated with the areas of larger uncertainties. At the bottom edge of the slip patch the large D_c values present in the target model are not very well recovered by the inferred models even when taking the uncertainty into account.

We can conclude that the dynamic parameters are generally well resolved in the areas of large slip. The bias of the dynamic parameters increases towards the edges of the slip distribution, which is, however, compensated by the similarly increasing uncertainties. This suggests that the target model values are inferred well within the estimated error margins, perhaps with the exception of the prestress and D_c values at the bottom edge of the rupture. The latter can be ascribed to the fact that our posterior PDF sampling is still not perfect due to the high dimensionality of the explored model space. Overcoming this challenge would require abundant computational resources and even more efficient forward solver. We note that the overall relative uncertainty of the dynamic parameters within the slip patch reach $\sim 50\%$ of the averaged values and are thus larger than the uncertainty of the kinematic rupture parameters.

4. Discussion and Conclusions

In this paper we have introduced a new computationally feasible dynamic source inversion approach, assuming a linear slip-weakening friction law. The method consists of two major components: i) a direct solver FD3D (Madariaga et al., 1998), which, for given distribution of the dynamic source parameters along the fault solves the rupture propagation and predicts the data that would have been observed by the receivers, and ii) a MCMC Parallel Tempering module (Sambridge, 2013) that samples the posterior Bayesian PDF in the model space, providing a model that best fits the data and its uncertainty. Assuming a linear slip-weakening friction law, the inverted, spatially variable dynamic parameters are: prestress, friction drop (difference between static and dynamic friction coefficients) and critical slip weakening distance D_c . The rupture nucleation represented by areas with prestress higher than the strength (i.e. negative strength excess) is an inherent part of the inversion as the prestress and strength are treated independently. The nucleation area is just constrained to be contained in a prescribed area. For more efficient model space exploration we start the MCMC sampler from a dynamic model estimated from a preliminary kinematic inversion result.

The viability of the approach has been demonstrated on the example of the Inv1 benchmark of the Source Inversion Validation initiative (Mai et al., 2016). This benchmark is based on a

spontaneous dynamic rupture with inhomogeneous distribution of prestress and D_c and constant friction drop. Thanks to the efficient implementation of the inversion we were able to visit more than a million of models during the Monte Carlo Markov Chain procedure. The final set consists of ~ 5000 model samples representing the random draws from the posterior PDF. Perhaps with the exception of underestimated values of the prestress and D_c in the bottom-most part of the fault, we can conclude that the dynamic parameters are generally well resolved in the area of large slip.

Our Bayesian approach results in a set of models that fit the observed data equally well. These models can be inspected for uncertainty of both the kinematic and dynamic parameters. In general, the dynamic parameters have larger uncertainty than the kinematic ones. This is not surprising, keeping in mind that the dynamic parameters are related, in a broader sense, to spatial derivatives of the kinematic parameters. Therefore, the dynamic parameters can be expected to be more heterogeneous than the kinematic ones and thus also subject to larger uncertainty. Among the dynamic parameters the critical slip weakening distance, D_c , has the largest relative uncertainty.

Kinematic inversions are known to be non-unique. This is especially well understood when the inversion is formulated in a linear framework, i.e. when the slip rates functions along the fault are treated as unknowns (Song and Dalguer, 2017; Gallovič et al., 2015). In fact, even if the fault geometry and velocity model are set correctly (in synthetic tests), the resulting kinematic models are subject to significant uncertainty due to the vast size of the null space of the inverse problem (Mai et al., 2016; Gallovič and Ampuero, 2015; Gallovič and Zahradník, 2011). This limitation is intrinsically due to the incomplete coverage of the wavefield by data recorded only at the surface, and to the usable frequency band of the data being limited by attenuation and scattering. The ill-posedness is somewhat reduced if a nonlinear kinematic source inversion approach is adopted, in which a functional form of the slip rates is assumed with a small number of parameters (e.g., rupture time, rise time, peak slip rate). While the assumption of a slip rate shape works effectively as a constraint, the resulting uncertainty is not negligible. In this context, the dynamic source inversion can be also viewed as a kinematic inversion constrained by the assumed friction law. Compared to the nonlinear kinematic inversion, the dynamic inversion is less restrictive. It allows more general and complex patterns of slip rates and rupture propagation, including phenomena often observed in dynamic rupture models (e.g. Gabriel et al., 2012; Huang et al., 2014) such as multiple simultaneous fronts (e.g. sub-Rayleigh rupture fronts trailing behind supershear rupture fronts), rupture jumps, re-nucleating fronts, back-propagating fronts, etc. Such complexities in the rupture kinematics are physically consistent due to the satisfaction of the prescribed fault friction law. On the other hand, the price to pay is the significant computational burden due to the numerous runs of expensive dynamic rupture simulations.

We note that we use relatively coarse grid parametrization of our dynamic model (2.5×2 km) and use bilinear interpolation to render the parameters to the fine finite-difference grid. The coarse parameterization limits the dimension of the model space. However, it also prevents certain dynamic features. For example we cannot model an abrupt step of fracture energy (D_c), which would produce an abrupt change of rupture speed that radiates a strong omega-squared phase (Madariaga 1983). Such distinct high-frequency features of the rupture cannot be recognized by the relatively low frequency (<1 Hz) data used in the inversion.

Peyrat et al. (2004) demonstrated that the dynamic inversion is also non-unique. In particular, trade-offs between strength excess and slip-weakening distance due to the limited frequency band of the data have been previously identified (Guatteri and Spudich, 2000). Indeed, fracture dynamics theory, in particular the crack tip equation of motion for 2D problems

(Freund, 1989), indicates that the dynamic rupture growth is primarily controlled by stress drop and fracture energy, $G_c = D_c(\tau_s - \tau_d)/2$, and that the weakening rate $W = (\tau_s - \tau_d)/D_c$ plays a second order. Those concepts suggest that, G_c would be better resolved than W in a dynamic inversion based on data at frequencies lower than the inverse of the process zone time, that is lower than rupture speed times W divided by shear modulus. To test this idea we analyze the potential trade-off between slip-weighted D_c and strength in our inversion results, see Fig. 10. The figure demonstrates a weaker anticorrelation than expected from the simple theoretical argument.

The present dynamic inversion provides a venue for earthquake source studies constrained by prescribed friction law. A real data application is demonstrated in our companion paper (Galovič et al., submitted to JGR).

Acknowledgement

We thank to L. Hanyk and J. Premus for their help with the software development, and to K. C. Duru for providing us with the WaveQLab3D solver and for his guidance in its usage. Most of the calculations were carried out on Salmon supercomputer (Ostrava), supported by the Ministry of Education, Youth and Sports from the Large Infrastructures for Research, Experimental Development and Innovations project “IT4Innovations National Supercomputing Center – LM2015070” (IT4I supercomputer). F. G., L. V. and A.-A. G. acknowledge financial support through the bilateral project of the Czech Science Foundation and DFG, no. 18-06716J and GA 2465/2-1, respectively. J.-P. A. acknowledges support by the French government, through the UCAJEDI Investments in the Future project managed by the National Research Agency (ANR) with the reference number ANR-15-IDEX-01. A.-A. G. acknowledges support by the European Union’s Horizon 2020 research and innovation program (ExaHyPE, grant no. 671698 and ChEESE, grant no. 823844), by the Volkswagen Foundation (ASCETE, grant no. 88479) and by KAUST-CRG (GAST, grant no. ORS-2016-CRG5-3027 and FRAGEN, grant no. ORS-2017-CRG6 3389.02).

References

- Aki, K., and P. G. Richards (2002), *Quantitative Seismology*, University Science Books, Sausalito, California.
- Bouchon, M. (1981). A simple method to calculate Green’s functions for elastic layered media, *Bull. Seism. Soc. Am.*, 71, 959–971.
- Bouchon, M. (1997). The state of stress on some faults of the San Andreas system as inferred from near-field strong motion data, *J. Geophys. Res.* 102, 11,731-11,744.
- Brace, W. F., and J. D. Byerlee (1966). Stick-Slip as a Mechanism for Earthquakes, *Science* 153, 990-992.
- Burjánek, J., and J. Zahradník, (2007). Dynamic stress field of a kinematic earthquake source model with k-squared slip distribution, *Geophys. J. Int.* 171, 1082-1097.
- Cirella, A., A. Piatanesi, M. Cocco, E. Tinti, L. Scognamiglio, A. Michelini, A. Lomax, and E. Boschi (2009), Rupture history of the 2009 L’Aquila (Italy) earthquake from non-linear joint inversion of strong motion and GPS data, *Geophys. Res. Lett.*, 36, L19304.
- Clayton, R., and B. Engquist (1977). Absorbing boundary conditions for acoustic and elastic equations, *Bull. Seism. Soc. Am.* 67, 1529-1540.

- Clévéde, E., M.-P. Bouin, B. Bukchin, A. Mostinskiy, and G. Patau (2004). New constraints on the rupture process of the 1999 August 17 Izmit earthquake deduced from estimates of stress glut rate moments, *Geophys. J. Int.* 159, 931-942.
- Corish, S. M., Ch. R. Bradley, and K. B. Olsen (2007). Assessment of a Nonlinear Dynamic Rupture Inversion Technique Applied to a Synthetic Earthquake, *Bull. Seism. Soc. Am.*, 97, 901-914.
- Coutant, O. (1989), Program of numerical simulation AXITRA, Tech. rep., Lab. de Geophys. Interne et Tectonophys., Grenoble, France.
- Dalguer, L. A., and S. M. Day (2006). Comparison of fault representation methods in finite difference simulations of dynamic rupture. *Bull. Seismol. Soc. Am.*, 96 (5), 1764-1778.
- Delouis, B., D. Giardini, P. Lundgren, and J. Salichon (2002), Joint inversion of InSAR, GPS, teleseismic, and strong-motion data for the spatial and temporal distribution of earthquake slip: Application to the 1999 Izmit mainshock, *Bull. Seismol. Soc. Am.*, 92, 278-299.
- Duputel, Z., J. Jiang, R. Jolivet, M. Simons, L. Rivera, J.-P. Ampuero, B. Riel, S. E. Owen, A. W. Moore, S. V. Samsonov, F. Ortega Culaciati, S. E. Minson (2015), The Iquique earthquake sequence of April 2014: Bayesian modeling accounting for prediction uncertainty, *Geophys. Res. Lett.*, 42, 7949-7957.
- Duru, K., and E. M. Dunham (2016). Dynamic earthquake rupture simulations on nonplanar faults embedded in 3D geometrically complex, heterogeneous Earth models, *J. Comp. Phys.* 305, 185-207.
- Fan, W., P. M. Shearer, and P. Gerstoft (2014), Kinematic earthquake rupture inversion in the frequency domain, *Geophys. J. Int.*, 199, 1138-1160.
- Falcioni, M., and M. W. Deem (1999). A biased Monte Carlo scheme for zeolite structure solution, *J. Chem. Phys.* 110, 1754-1766.
- Frankel, A., and L. Wennerberg (1989), Rupture process of the Ms 6.6 Superstition Hills, California, earthquake determined from strong-motion recordings: application of tomographic source inversion, *Bull. Seismol. Soc. Am.*, 79, 515-541.
- Freund, L. (1990). *Dynamic Fracture Mechanics* (Cambridge Monographs on Mechanics). Cambridge University Press. OPRAVIT V TEXTU LETOPOCET
- Fukuyama, E. and T. Mikumo (1993). Dynamic rupture analysis: Inversion for the source process of the 1990 Izu-Oshima, Japan, earthquake, *J. Geophys. Res.*, 98, 6529-6542.
- Gabriel, A. A., J. P. Ampuero, L. A. Dalguer, and P. M. Mai (2012). The transition of dynamic rupture styles in elastic media under velocity-weakening friction *J. Geophys. Res.*, 117, B09311.
- Gallovič, F., W. Imperatori, and P. M. Mai (2015), Effects of three-dimensional crustal structure and smoothing constraint on earthquake slip inversions: case study of the Mw6.3 2009 L'Aquila earthquake, *J. Geophys. Res.* 120, 428-449.
- Gallovič, F., Ľ. Valentová, J.-P. Ampuero, and A.-A. Gabriel (submitted). Bayesian Dynamic Finite-Fault Inversion: 2. Application to the 2016 Amatrice, Italy, Earthquake, submitted to *J. Geophys. Res.*
- Gallovič, F., and J. Zahradník (2011), Toward understanding slip-inversion uncertainty and artifacts: 2. Singular value analysis, *J. Geophys. Res.*, 116, B02309
- Gallovič, F., J. Zahradník, D. Křížová, V. Plicka, E. Sokos, A. Serpetsidaki, and G.-A. Tselentis (2009). From Earthquake Centroid to Spatial-Temporal Rupture Evolution: Mw 6.3 Movri Mountain Earthquake, June 8, 2008, Greece, *Geophys. Res. Lett.*, 36, L21310,
- Goto, H., Y. Yamamoto, and S. Kita (2012), Dynamic rupture simulation of the 2011 off the Pacific coast of Tohoku Earthquake: Multi-event generation within dozens of seconds, *Earth Planets Space*, 64, 1167-1175.
- Graves, R.W. (1996). Simulating seismic wave propagation in 3D elastic media using staggered-grid finite differences, *Bull. Seismol. Soc. Amer.* 86, 1091-1106.

- Guatteri, M., and P. Spudich (2000). What can strong-motion data tell us about slip-weakening fault-friction laws?, *Bull. Seism. Soc. Am.* 90, 98-116.
- Guatteri, M., P. Spudich, and G. C. Beroza (2001). Inferring rate and state friction parameters from a rupture model of the 1995 Hyogo-ken Nanbu (Kobe) Japan earthquake, *J. Geophys. Res.* 106, 26,511-26,522.
- Harris, R. A., M. Barall, B. Aagaard, S. Ma, D. Roten, K. Olsen, B. Duan, D. Liu, B. Luo, K. Bai, J.-P. Ampuero, Y. Kaneko, A.-A. Gabriel, K. Duru, T. Ulrich, S. Wollherr, Z. Shi, E. Dunham, S. Bydlon, Z. Zhang, X. Chen, S. N. Somala, Ch. Pelties, J. Tago, V. M. Cruz-Atienza, J. Kozdon, E. Daub, K. Aslam, Y. Kase, K. Withers, L. Dalguer (2018). A Suite of Exercises for Verifying Dynamic Earthquake Rupture Codes, *Seism. Res. Lett.* 89, 1146-1162.
- Hartzell, S. H., and T. H. Heaton (1983), Inversion of strong ground motion and teleseismic waveform data for the fault rupture history of the 1979 Imperial Valley, California, earthquake, *Bull. Seismol. Soc. Am.*, 73, 1553-1583.
- Hartzell, S., P. Liu, C. Mendoza, C. Ji, and K. M. Larson (2007). Stability and uncertainty of finite-fault slip inversions: Application to the 2004 Parkfield, California, earthquake, *Bull. Seism. Soc. Am.* 97, 1911-1934.
- Huang, Y., J. P. Ampuero, and D. V. Helmberger (2014). Earthquake ruptures modulated by waves in damaged fault zones *J. Geophys. Res.*, 119 (4), 3133–3154.
- Ji, C., D. Wald, and D. V. Helmberger (2002), Source description of the 1999 Hector Mine, California, earthquake, part I: Wavelet domain inversion theory and resolution analysis, *Bull. Seismol. Soc. Am.*, 92, 1192-1207.
- Kennett, B. L. N., & Kerry, N. J. (1979). Seismic waves in a stratified half space. *Geophys. J. Int.*, 57(3), 557-583.
- Kristek, J., P. Moczo, and R. J. Archuleta (2002). Efficient Methods to Simulate Planar Free Surface in the 3D 4th-Order Staggered-Grid Finite-Difference Schemes, *Stud. Geophys. Geod.* 46, 355-381.
- Levander, A. (1988). Fourth-order finite-difference P-SV seismograms. *Geophysics*, 53, 1425-1436.
- Madariaga, R. (1983). High frequency radiation from dynamic earthquake, *Ann. Geophys.*, 1, 17-23.
- Madariaga, R., K. B. Olsen, and R. J. Archuleta (1998). Modelling dynamic rupture in a 3D earthquake fault model, *Bull. Seismol. Soc. Am.*, 88(5), 1182-1197.
- Madariaga, R., and S. Ruiz (2016). Earthquake dynamics on circular faults: A review 1970–2015. *J Seismol.* 20, 1235-1252.
- Mai, P. M., D. Schorlemmer, M. Page, J.-P. Ampuero, K. Asano, M. Causse, S. Custodio, W. Fan, G. Festa, M. Galis, F. Gallovič, W. Imperatori, M. Käser, D. Malytskyy, R. Okuwaki, F. Pollitz, L. Passone, H. N. T. Razafindrakoto, H. Sekiguchi, S. G. Song, S. N. Somala, K. K. S. Thingbaijam, C. Twardzik, M. van Driel, J. C. Vyas, R. Wang, Y. Yagi, O. Zielke (2016). The Earthquake-Source Inversion Validation (SIV) Project. *Seism. Res. Lett.*, 87, 690-708.
- Metropolis, N., A. Rosenbluth, M. Rosenbluth, A. Teller, and E. Teller (1953). Equations of state calculations by fast computing machines, *J. Chem. Phys.* 21, 1087-1091.
- Monelli, D., and M. P. Mai (2008), Bayesian inference of kinematic earthquake rupture parameters through fitting of strong motion data, *Geophys. J. Int.*, 173, 220-232.
- Niemeijer, A., C. Marone, and D. Elsworth (2010). Fabric induced weakness of tectonic faults, *Geophys. Res. Lett.* 37, L03304.
- Ohnaka, M. (2013). *The Physics of Rock Failure and Earthquakes*, Cambridge University Press

- Okada, Y. (1992). Internal deformation due to shear and tensile faults in a half-space, *Bull. Seismol. Soc. Am.* 82, 1018-1040.
- Olson, A. H., and J. G. Anderson (1988), Implications of frequency-domain inversion of earthquake ground motions for resolving the space-time dependence of slip on an extended fault, *Geophys. J. Int.*, 94, 443–455.
- Peyrat, S., and K. B. Olsen (2004), Nonlinear dynamic rupture inversion of the 2000 Western Tottori, Japan, earthquake, *Geophys. Res. Lett.*, 31, L05604.
- Peyrat, S., K. B. Olsen, and R. Madariaga (2004). Which Dynamic Rupture Parameters Can Be Estimated from Strong Ground Motion and Geodetic Data?, *Pure Appl. Geophys.* 161,2155-2169.
- Piatanesi, A., A. Cirella, P. Spudich, and M. Cocco (2007), A global search inversion for earthquake kinematic rupture history: Application to the 2000 western Tottori, Japan earthquake, *J. Geophys. Res.*, 112, B07314.
- Pizzi, A., A. Di Domenica, F. Gallovič, L. Luzi, and R. Puglia (2017). Fault segmentation as constraint to the occurrence of the main shocks of the 2016 Central Italy seismic sequence, *Tectonics* 36, 2370-2387.
- Ruina, A. L. (1983). Slip instability and state variable friction laws, *J. Geophys. Res.* 88, 10,359-10,370.
- Ruiz, S., and R. Madariaga (2011). Determination of the friction law parameters of the Mw 6.7 Michilla earthquake in northern Chile by dynamic inversion, *Geophys. Res. Lett.*, 38, L09317.
- Ruiz, S., and R. Madariaga (2013). Kinematic and dynamic inversion of the 2008 Northern Iwate earthquake, *Bull. Seism. Soc. Am.* 103, 694-708.
- Sambridge, M. (2013). A Parallel Tempering algorithm for probabilistic sampling and multimodal optimization, *Geophys. J. Int.* 196, 357-374.
- Sambridge, M., and K. Mosegaard (2002). Monte Carlo methods in geophysical inverse problems, *Rev. Geophys.*, 40 (3), 3-1.
- Sekiguchi, H., K. Irikura, and T. Iwata (2002). Source inversion for estimating the continuous slip distribution on a fault—introduction of Green's functions convolved with a correction function to give moving dislocation effects in subfaults, *Geophys. J. Int.*, 150, 377-391.
- Shao, G., and C. Ji (2012). What the exercise of the SPICE source inversion validation BlindTest 1 did not tell you, *Geophys. J. Int.* 189, 569-590.
- Schmedes, J., R. J. Archuleta, and D. Lavallée (2010). Correlation of earthquake source parameters inferred from dynamic rupture simulations. *J. Geophys. Res.* 115, B03304.
- Sokos, E., J. Zahradník, F. Gallovič, A. Serpetsidaki, V. Plicka, and A. Kiratzi (2016). Asperity break after 12 years: The Mw6.4 2015 Lefkada (Greece) earthquake, *Geophys. Res. Lett.* 43, 6137-6145.
- Song, S. G., and L. A. Dalguer (2017). Synthetic Source Inversion Tests with the Full Complexity of Earthquake Source Processes, Including Both Supershear Rupture and Slip Reactivation, *Pure Appl. Geophys.*, 174, 3393-3418.
- Tanırcan, G., L. Dalguer, F. N. Bekler, and N. Meral Özel (2017). Dynamic Rupture Modelling of the 1999 Düzce, Turkey Earthquake, *Pure Appl. Geophys.* 174, 3343-3355.
- Tarantola, A., and B. Valette (1982). Generalized nonlinear inverse problems solved using the least squares criterion, *Rev. Geophys.*, 20, 219–232.
- Tarantola, A. (2005). Inverse problem theory and methods for model parameter estimation. *SIAM*.
- Tinti, E., Cocco, M., Fukuyama, E., Piatanesi, A. (2009). Dependence of slip weakening distance (D_c) on final slip during dynamic rupture of earthquakes, *Geophys. J. Int.*, 177,1205-1220

- Twardzik, C., S. Das, and R. Madariaga (2014). Inversion for the physical parameters that control the source dynamics of the 2004 Parkfield earthquake, *J. Geophys. Res. Solid Earth*, 119.
- Ulrich, T., A. A. Gabriel, J. P. Ampuero, and W. Xu (2018). Dynamic viability of the 2016 Mw 7.8 Kaikoura earthquake cascade on weak crustal faults, *EarthArXiv preprint*, doi:10.31223/osf.io/aed4b.
- Viesca, R. C., and D. I. Garagash (2015). Ubiquitous weakening of faults due to thermal pressurization, *Nature Geoscience* volume 8, pages 875–879.
- Weng, H., and Yang, H. (2018). Constraining Frictional Properties on Fault by Dynamic Rupture Simulations and Near-Field Observations, *J. Geophys Res. Solid Earth*, doi: 10.1029/2017JB015414.
- Zhang, W., T. Iwata, K. Irikura, H. Sekiguchi, and M. Bouchon (2003), Heterogeneous distribution of the dynamic source parameters of the 1999 Chi-Chi, Taiwan, earthquake, *J. Geophys. Res. Solid Earth*, 108, 2232. PRIDAT DO UVODU ZA REFERENCU Goto et al., 2012, Burjánek and Zahradník, 2007; Guatteri et al., 2001; Bouchon, 1997;
- Zahradník, J., and F. Gallovič (2010). Toward understanding slip inversion uncertainty and artifacts, *J. Geophys. Res.* 115, B09310, doi:10.1029/2010JB007414.

Table 1 – Model and computational parameters considered for the Source Inversion Validation Inv1 tests.

<i>Parameter</i>	<i>Value</i>
<i>General</i>	
Fault mechanism	Strike: 90°, dip: 80°, rake: 180°
Fault dimensions	Length 36 km, width 20 km
Fault top depth	0 km
Normal stress depth dependence	16.2 MPa/km
Data error	0.1 m
<i>FD3D</i>	
Spatial discretization	0.1 km
FD half-domain size (along strike x normal x along-dip)	360 x 100 x 200
Duration of slip-rate functions	10 s
Time step	0.002 s
<i>Green's functions</i>	
Spatial fault discretization	1 x 1 km
Time sampling	0.2 s
Waveform frequency range (displacements)	0.05 – 0.5 Hz
<i>Model parameterization and priors</i>	
Control point grid (along-strike x along-dip)	13 x 9
Pre-stress prior	0 – 200 MPa
Static – Dynamic friction coefficient prior	0 – 1.1
Critical slip-weakening distance prior	0.15 – 5.00 m
Nucleation area prior (along-strike, up-dip, radius)	27 km, 6 km, 5 km

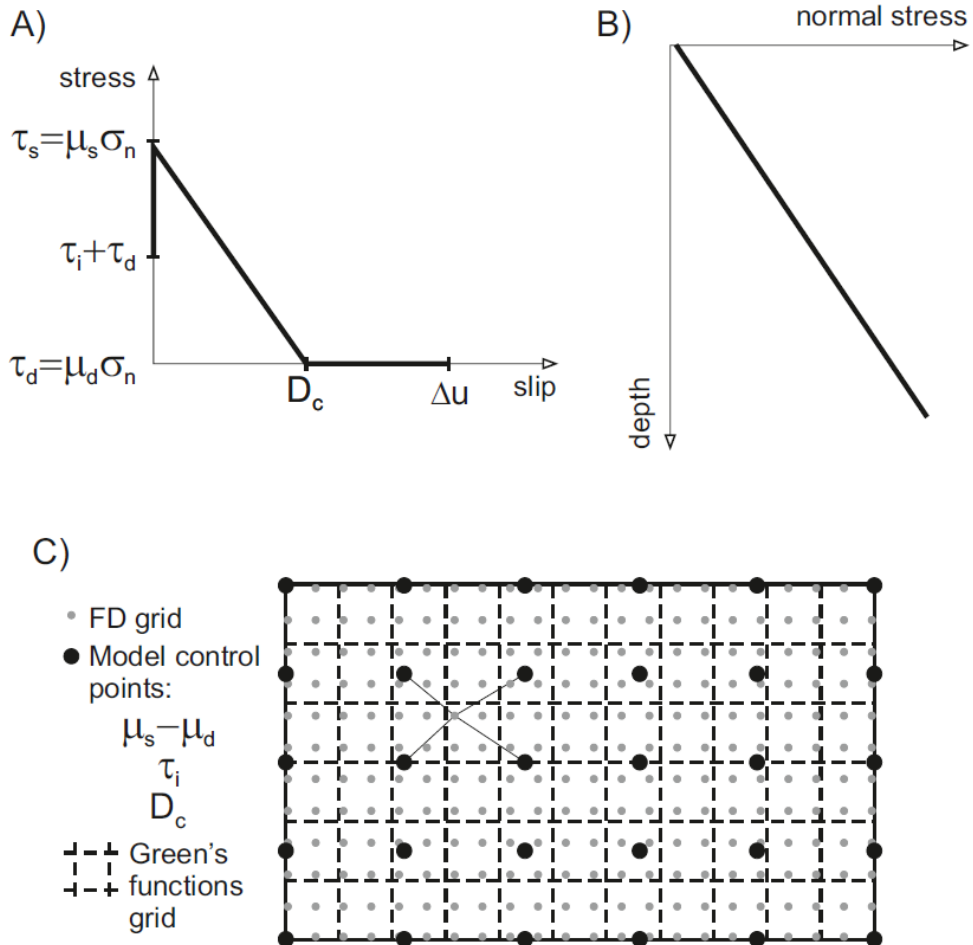


Figure 1: Rupture model and its parameterization. A) Linear slip-weakening friction law. Parameters subject to inversion are prestress (initial stress) τ_i , difference between static and dynamic friction coefficients ($\mu_s - \mu_d$), and critical slip-weakening distance D_c . The frictional coefficient difference is converted to breakdown stress drop ($\tau_s - \tau_d$) by multiplication with a prescribed normal stress depth profile (B). (C) Illustration of three grids considered in the calculations. Model parameters are defined on the coarsest grid of control points. The values are bilinearly interpolated onto the densest finite-difference (FD) grid that is used by the FD3D dynamic rupture simulator. Slip rates calculated by FD3D are averaged spatially onto the coarser Green's functions grid, for which Green's functions are pre-calculated and stored. Waveforms are calculated by convolving the individual averaged slip rates with the respective Green's functions and summed up following the representation theorem. For the actual grid parameters and normal stress profile considered in the present study see Tab. 1.

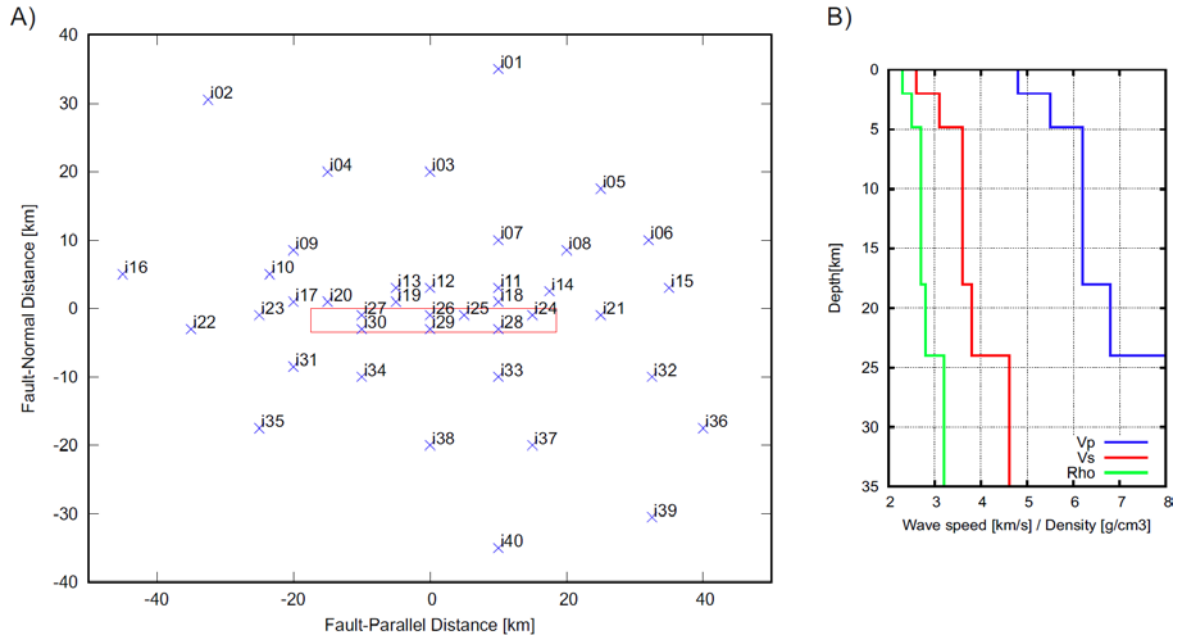


Figure 2: A) Geometry of fault (red box) and station locations (crosses) of the Source Inversion Validation (SIV) test Inv1. The right-lateral strike-slip fault dips at 80° and reaches the surface. B) Parameters of the 1D elastic layered medium that is considered in calculation of the Green's functions.

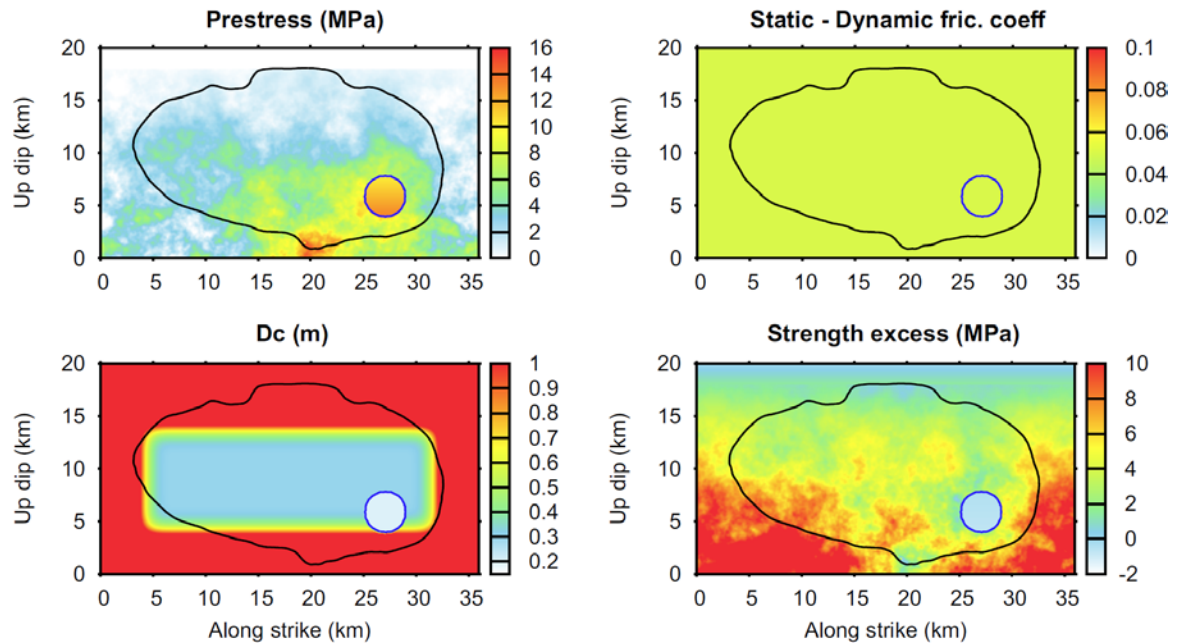


Figure 3: Input dynamic parameters of the target model of the Inv1 test, describing spontaneous dynamic rupture governed by a linear slip-weakening friction. The prestress is heterogeneous on the fault. Dynamic and static friction coefficients are considered homogeneous at 0.60 and 0.55, respectively, i.e. the friction drop being 0.05. Nucleation region with negative strength excess is delimited by the blue circle. D_c is constant at 0.4 m in approximately the center of the fault, while it is set to 0.2 m in the nucleation region and linearly increases to $D_c = 5$ m towards the fault boundaries. The black contour delineates the ruptured area (see Fig. 4).

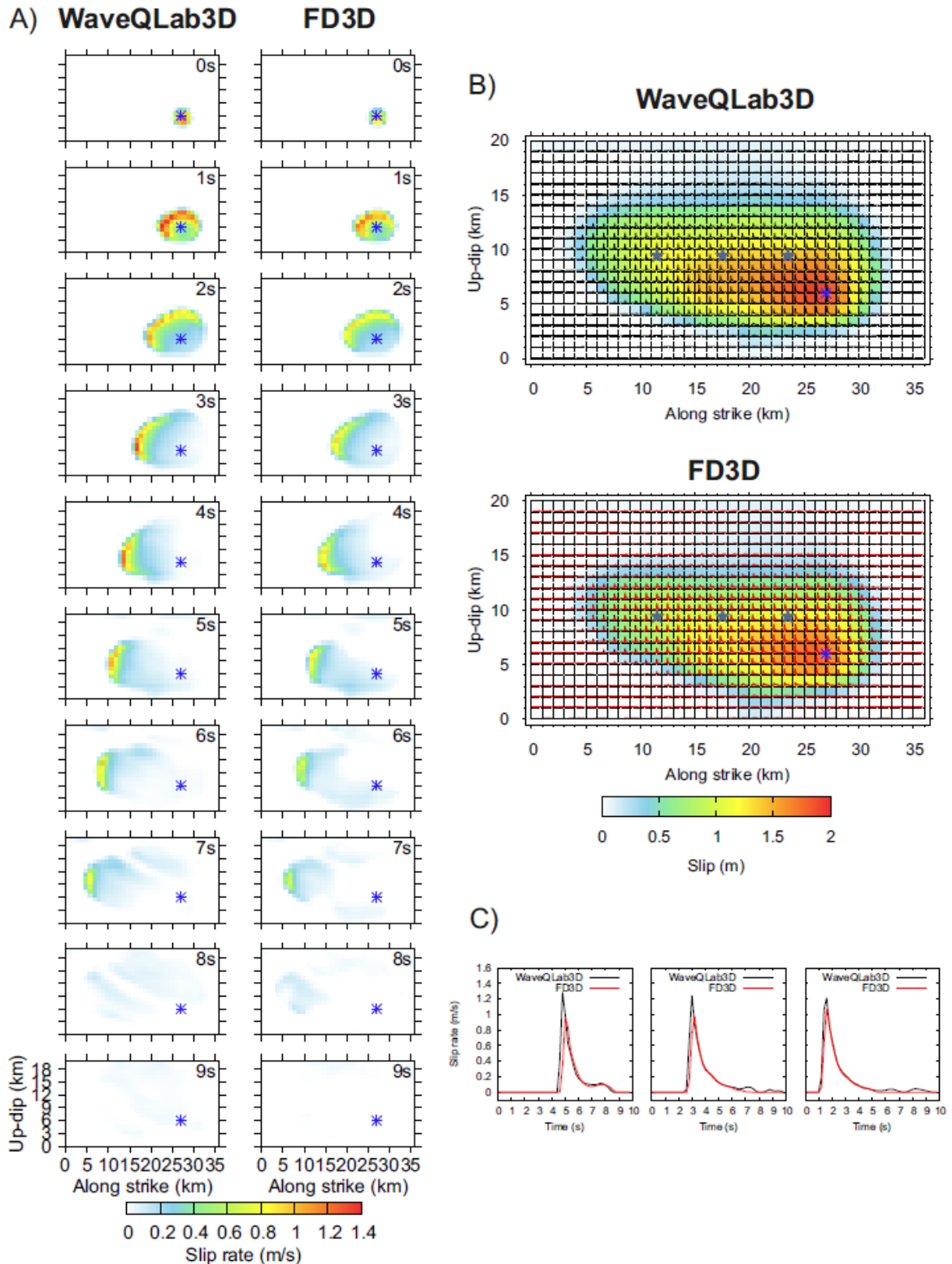


Figure 4: Spontaneous rupture propagation calculated by two different codes (see legend). In WaveQLab3D the dipping fault geometry is fully respected in the simulation, while in FD3D the fault is approximated by a vertical plane to speed-up the simulation. The simulation results are compared in terms of: (A) slip-rate snapshots, (B) slip and slip-rates plotted along the fault, and (C) slip rates from three selected points depicted in panel (B). The results match almost perfectly, having model variance reduction in terms of the slip-rate functions equal to 0.83. Comparison of the corresponding waveforms is shown in Fig. 5.

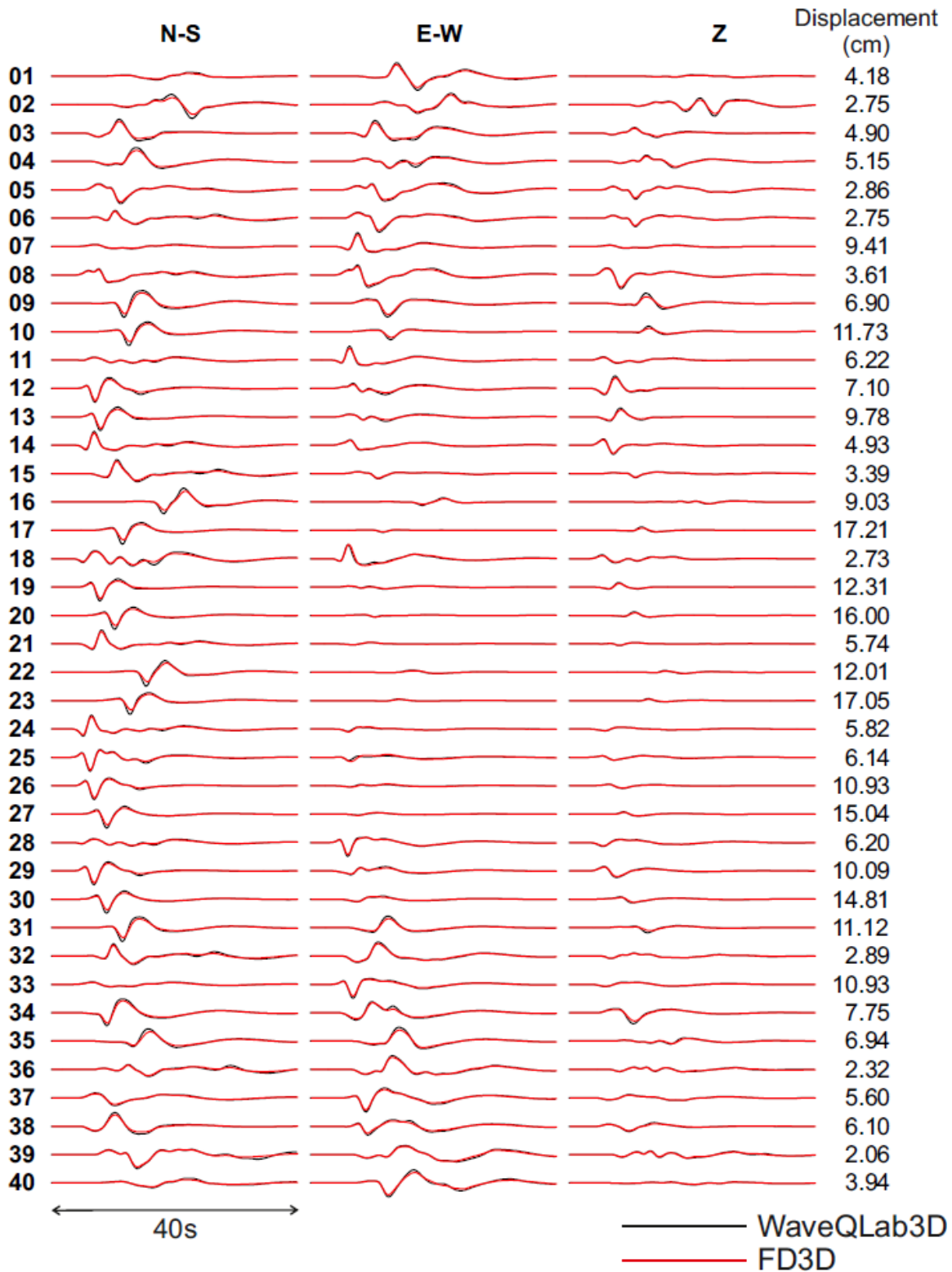


Figure 5: Displacement seismograms of the target model in frequency range 0.05-0.50Hz, as considered in the inversion, calculated by the two simulation methods (see legend). The station names are depicted on the left, while maximum amplitudes at the individual stations are shown on the right. The waveforms agree very well with variance reduction in the data space reaching 0.94.

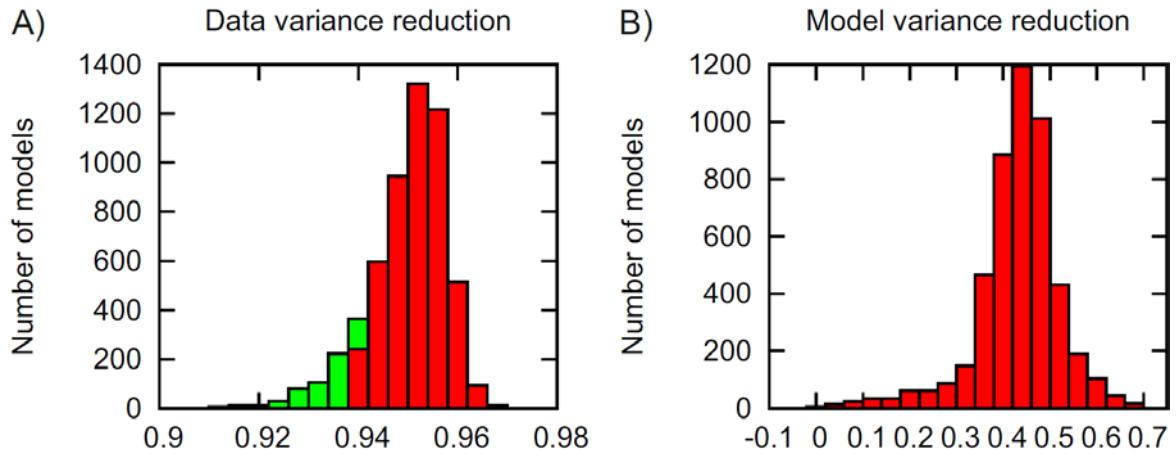


Figure 6: A) Histograms of variance reduction (VR) in the data space of all posterior model samples (red+green); red histogram accounts only for models having posterior probability density value larger than 0.1% of the posterior PDF maximum (accepted models). B) Histogram of model VR for the accepted models expressing similarity with the target model in terms of the slip-rate functions. Note that the model that best fits the target data has model VR as low as 0.3 with the target model. Rupture model with the largest model VR (0.71) is explored in Fig. 8.

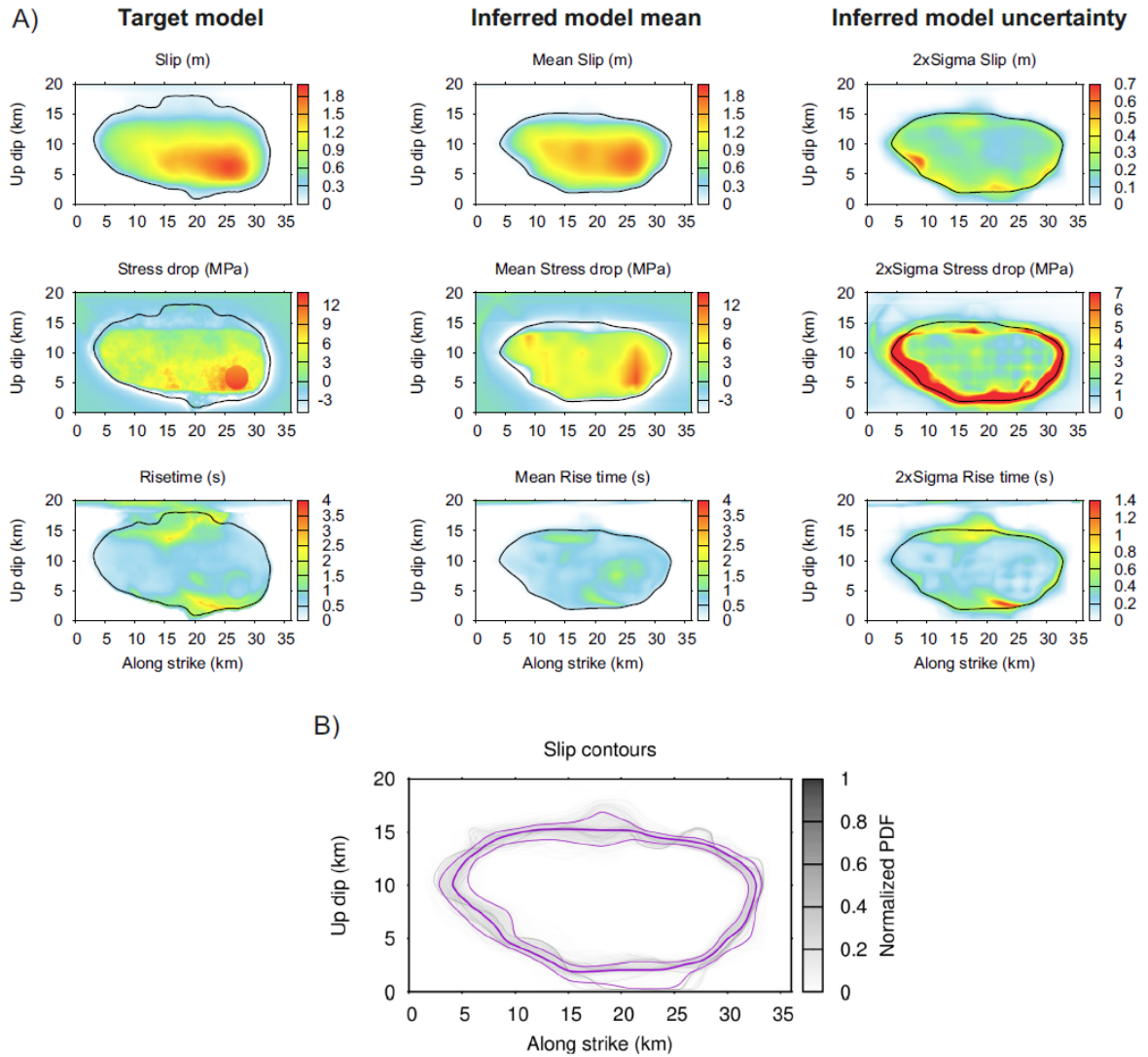


Figure 7: A) Comparison of target model parameters along the fault (left column) with averaged model parameters over all accepted posterior samples (middle column) and the model parameters' uncertainty in terms of two sigma. B) Slip contours of all accepted posterior model samples coded in grey displaying the variability of the inferred spatial rupture extent. The thick and thin magenta lines show the contours of the averaged slip model and its two sigma uncertainty.

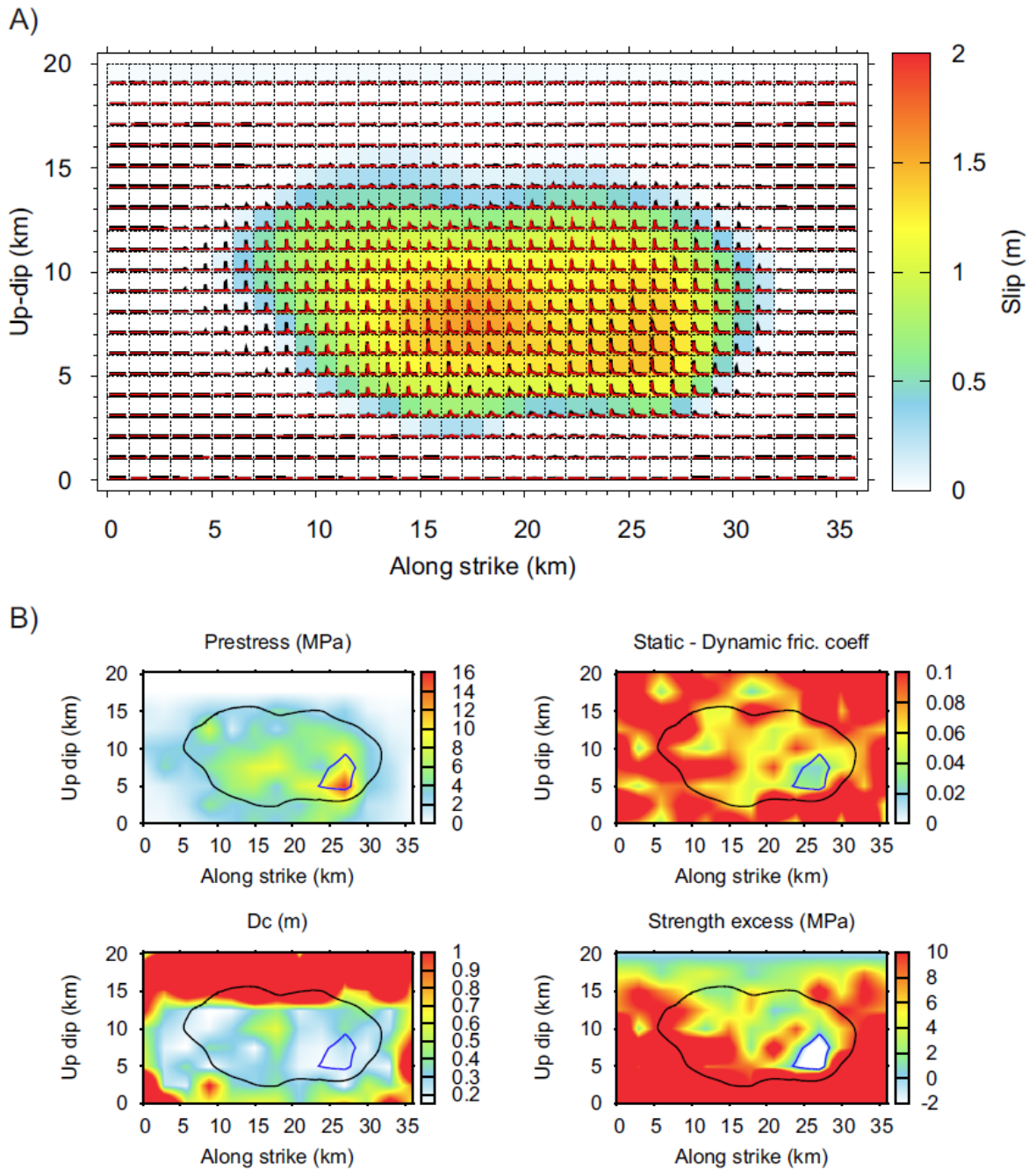


Figure 8: Properties of the inverted rupture model with the largest model VR. A) Slip distribution (color-coded) with superimposed slip rates (in red). The black slip rates in the background correspond to the target model for reference. B) Dynamic rupture parameters of this particular inverted model. Black and blue contours delineate the slip distribution and nucleation zone (having negative strength excess), respectively. Data VR of the present model is 0.94.

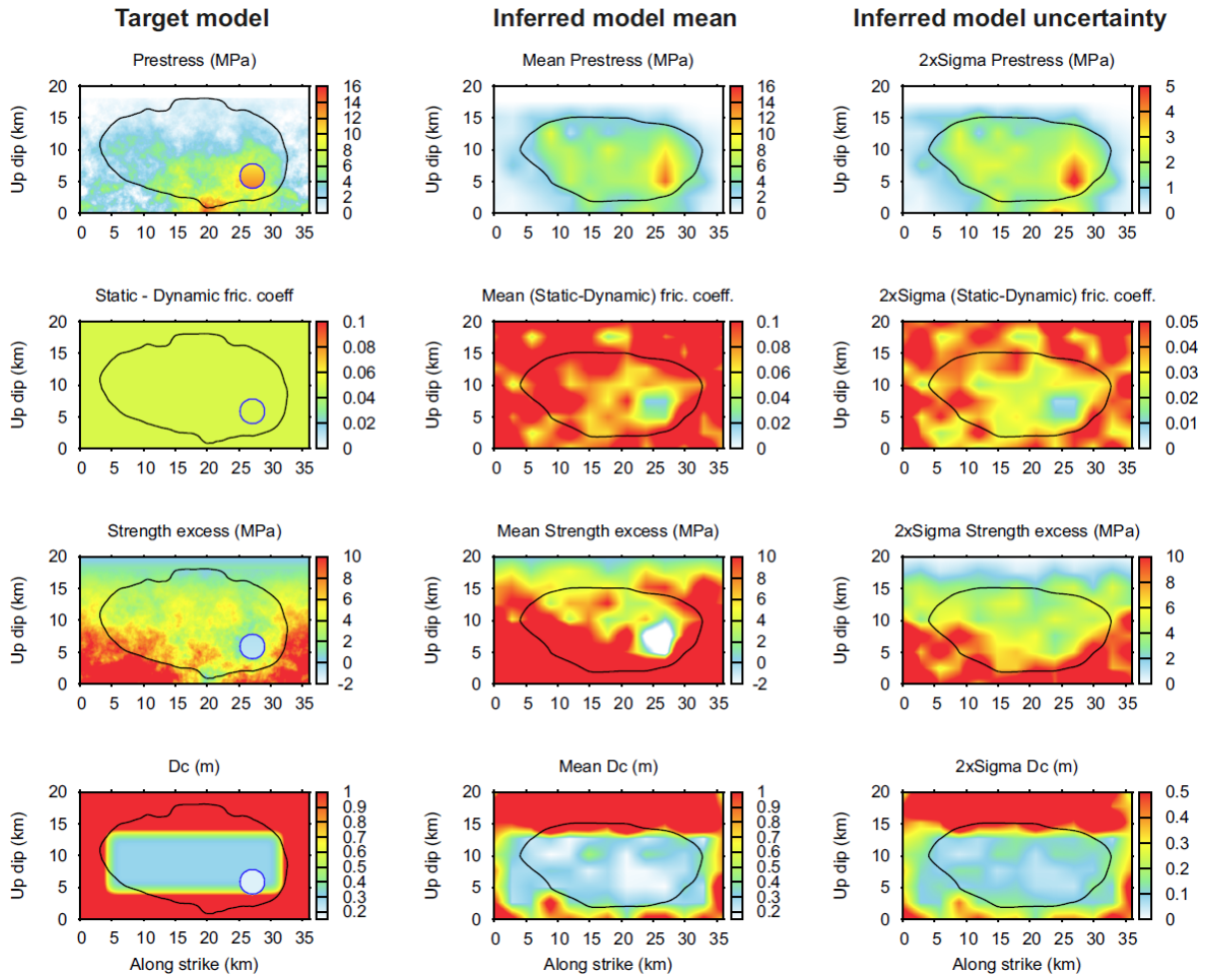


Figure 9: Comparison of target model dynamic parameters along the fault (left column) with distributions of dynamic parameters averaged over all accepted posterior samples (middle column) and their uncertainty in terms of two sigma. Black contour delineates the averaged distribution of slip (see Fig. 8).

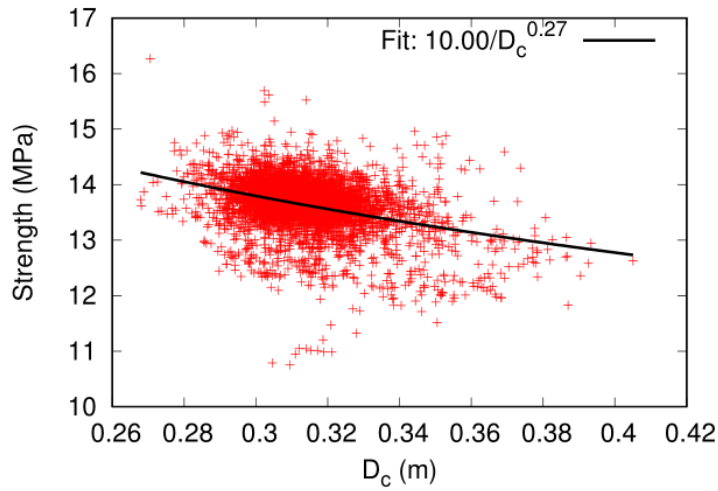


Figure 10: Slip-weighted mean strength τ_s vs. slip-weighted mean critical slip-weakening distance D_c for all accepted model samples (red crosses). Regression line fitting power-law function is shown in black (see legend for the parameters). The obtained relation does not follow the expectation of the theoretical solution for the crack tip equation of motion in 2D (Freund, 1989), indicating that the dynamic rupture growth is controlled by fracture energy, thus suggesting $\tau_s \sim 1/D_c$.