

Mapping and Monitoring Rice Agriculture with Multisensor Temporal Mixture Models

Daniel Sousa^{1*} and Christopher Small¹

¹Lamont-Doherty Earth Observatory, Columbia University, Palisades, NY, USA

Corresponding author: Daniel Sousa (d.sousa@columbia.edu)

Key Points:

- Novel approach to mapping & monitoring rice agriculture using VSWIR & TIR imagery
- Veg. abundance (Fv) & brightness temp. (Tb) characterization of CA rice phenology
- Fv particularly useful for crop timing, Tb for rice/non-rice crop discrimination
- Data sparse mid-2018 model provides accurate monitoring results in near-realtime
- Field validation with >1650 km driving transects, > 8500 photos, 380 field spectra

Keywords:

Spatiotemporal; Rice Phenology; Multisensor; Landsat Thermal; Temporal Mixture Model

Abstract:

Rice feeds more humans than any other crop on Earth. Accurate prediction of the timing and volume of rice harvests therefore has considerable global importance for food security and economic stability, especially in the developing world. Optical and thermal satellite imagery can provide critical constraints on the spatial extent of rice planting and the timing of rice phenology. We present a novel approach to the mapping & monitoring of rice agriculture using Temporal Mixture Models (TMMs) derived from parallel spatiotemporal analyses of coincident optical and thermal Landsat image time series. Using the Sacramento Valley of California as a test area, we characterize regional rice phenology in terms of both fractional vegetation abundance (Fv) and brightness temperature (Tb). We compare satellite Tb retrievals to station data and find uncorrected Tb to compare with the upper bound of the envelope of air temperature observations to within 3°C on average. Results from parallel spatiotemporal analyses of coincident Fv and Tb image time series over the 2016 & 2017 growing seasons suggest that TMMs based on single year image time series can provide simple and accurate maps of crop timing, while TMMs based on dual year image time series can provide comparable maps of year-to-year crop conversion. Fv time series data show particular promise for estimating crop timing, while Tb appears particularly well suited for discriminating between rice and other crops. We also build a sample model midway through the 2018 growing season to illustrate a potential near-realtime monitoring application. Field validation confirms that the mid-2018 monitoring model provides an accurate upper bound estimate of the spatial extent and relative timing of the rice crop, even under conditions of relative data scarcity. The implications of these results could have potential utility for further analyses of precision agriculture, pest management, evapotranspiration (ET) and cropping practice verification.

36 **Introduction**

37 Rice agriculture is critical for global food security. Much of the developing world relies on
38 rice production for both subsistence and/or commercial purposes. Rice is the largest food source for
39 the world's poor and more than half of the world's population relies on rice as its staple food
40 (Muthayya et al., 2014). In terms of nutrition, rice provides 21% of global human per capita energy
41 and 15% of per capita protein. More land area is used for rice production than any other agricultural
42 crop (Global Rice Science Partnership, 2013).

43 Predictability of global rice production requires accurate forecasting of both planting and
44 harvest. Mapping and monitoring efforts can improve prospective rice harvest estimates by
45 constraining fundamental variables such as planted area and timing of key phenological transitions.
46 In addition, concerns important to commercial growers like optimization of water and chemical
47 additive use, assessment of extent and severity of weeds and pests, and independent verification of
48 alternative cropping practices also rely on timely landscape scale biogeophysical observations.

49 One cost effective tool to meet these needs is spatiotemporal analysis of satellite imagery.
50 Free decameter (10 to 100 m) resolution multispectral optical Earth observing imagery already
51 exists through the Landsat program, with data extending back to the early 1980s. The Landsat
52 program has been supplemented since 2015 by the addition of the Sentinel-2 constellation (Drusch
53 et al., 2012). Additional hectometer (100 to 1000 m) resolution imagery is available through the
54 MODIS, Sentinel-3 and VIIRS programs. The global archive of meter to hectometer resolution
55 optical satellite imagery is expected to continue to grow into the future as further missions are
56 planned in both public and private sectors. This rich set of observations – with global coverage –
57 can facilitate both retrospective and prospective analyses for a wide range of agricultural
58 applications.

59 Using optical satellite imagery to accurately map and monitor agriculture requires rigorous
60 characterization of the crop's life cycle and cropping practices in order to confidently relate time
61 series of reflectance spectra to time series of biogeophysically relevant quantities. Fortunately, in
62 recent decades significant effort has been devoted, and much success has been achieved, in studying
63 and improving rice agriculture in the myriad contexts it is grown around the world (Khush, 2003).
64 As a result, rice is one of the best-understood crops on Earth from an agronomic perspective.
65 However, significantly less work has been done to characterize how the stages of rice agriculture
66 are recorded by optical satellite imagery. To date, most applications of satellite imagery for rice
67 agriculture have focused on discrete classification and mapping of rice extent, rather than on the
68 physical properties and processes that characterize the phenological cycle of rice crops.

69 An obvious distinction between rice and most other crops is that rice is often (but not
70 always) grown in paddies. This fundamental difference results in a distinctive physical signature for
71 rice when imaged by satellites at both optical VSWIR (Visible through Shortwave Infrared, 0.4-2.5
72 μm) and TIR (Thermal Infrared, 9-14 μm) wavelengths. The evolution of the rice crop throughout a
73 growing season therefore occupies a unique trajectory through the geophysical parameter space of
74 temperature and optical reflectance. This distinction provides leverage for producing accurate crop-
75 specific maps of rice, which are not generally possible with other crops.

76 In this work, we present a straightforward, physically- (as opposed to statistically-) based
77 approach for the mapping and monitoring of rice agriculture using time series of coincident Landsat
78 VSWIR and TIR observations. Using the Sacramento Valley of California as our example area, we
79 apply the methodology of spatiotemporal analysis, described in detail by (Small, 2012), to the
80 special case of a parallel analysis of the twin data streams from coincident Landsat 8 OLI
81 (Operational Land Imager) and TIRS (Thermal Infrared Sensor) image time series. The resulting
82 VSWIR and TIR data spaces each characterize complementary features of the biogeophysical
83 evolution of the agricultural landscape. Using endmembers of distinct temporal trajectories,
84 independently derived from each data stream, we demonstrate our method by mapping both the
85 phenological timing and presence/absence of rice crops across 2 years. Finally, we also show the
86 seasonal evolution of the landscape in Temperature-Vegetation space. This suggests more detailed
87 investigation into the spatiotemporal analysis of evapotranspiration (ET) as an attractive avenue for
88 future work by potentially directly addressing several of the 10 outstanding research questions
89 identified by the recent review of (Fisher et al., 2017).

90 While a considerable body of literature exists focusing on mapping rice from optical satellite
91 imagery, to our knowledge previous work has largely focused applying a variety of complex
92 statistical algorithms to VSWIR data, usually without using thermal information. Some previous
93 studies have included thermal into their algorithms, but rarely in a physically based way. Our
94 approach has the benefits of both relative mathematical simplicity and explicit grounding in
95 biogeophysical processes.

96 **Background**

97 **Rice in the Sacramento Valley**

98 The Great Central Valley of California is comprised of two major units: the northerly
99 Sacramento Valley and the southerly San Joaquin Valley. The climate and soil of the Sacramento
100 Valley are well suited to rice production: clay-rich soils which are easily able to support paddy
101 water dominate much of the valley floor and hot, dry summers provide a supportive growing
102 environment for the rice plant with minimal risk of mid- or late-season rains damaging the crop. As
103 a result, rice yields in the region are some of the highest in the world, with average yields now
104 exceeding 9000 kg/ha (8000 lbs/acre). California is a major rice-growing region, producing 75% of
105 the medium grain and 98% of the short grain rice grown in the United States. California grows more
106 rice than any U.S. state other than Arkansas, which dominates in long grain rice production. Of the
107 rice production in California, approximately 95% occurs in the Sacramento Valley, mainly in
108 Colusa, Sutter, Butte, and Glenn counties. For a thorough yet concise background on the history and
109 current state of rice production in California, see (Geisseler & Horwath, 2013).

110 The same clear, dry summer climate that supports rice production in the Sacramento Valley
111 also benefits satellite imaging. This is reflected in the data archive, as over 10 cloud-free satellite
112 imaging acquisitions were acquired for every growing season since the launch of Landsat 8 in 2013.
113 When present, smoke from summer wildfires hinders satellite imaging. However, wildfires in
114 California are most common in late summer, after the rice crop has been planted & established and
115 high frequency imaging is less critical for crop monitoring. These factors, combined with the
116 economic productivity of the California rice crop and the abundance of ground-based observational

117 data, suggest that the Sacramento Valley may be a nearly ideal location to characterize the evolution
118 of rice agriculture in the geophysical parameter space relevant to optical satellite imaging.

119 Spatiotemporal Analysis and Temporal Mixture Models

120 Our approach to the quantitative analysis of satellite image time series is described in detail
121 by (Small, 2012). The method can be decomposed into two stages: characterization and modeling.
122 The characterization stage involves performing an Empirical Orthogonal Function (EOF) analysis
123 of the satellite image time series. This initial EOF analysis considers the image time series as a
124 matrix with each geographic pixel occupying a row and each time step occupying a column. An
125 image time series therefore generally contains a large (generally $>10^6$) number of rows and a much
126 smaller (generally $<10^3$) number of columns. The EOF analysis is based on a Principal Component
127 (PC) transform which computes the covariance (or correlation) matrix of this dataset and then
128 performs an eigenvalue/eigenvector decomposition in order to determine the dominant modes of
129 uncorrelated spatial and temporal variance. The transformed spatiotemporal data are then examined
130 in this new, optimized space, referred to as the Temporal Feature Space (TFS) and depicted
131 graphically as scatterplots of the spatial Principal Components in conjunction with the
132 corresponding temporal EOFs. The most distinct temporal patterns (i.e. phenologies) occupy apexes
133 of the data cluster in the TFS while (in the case of linear mixing) binary mixtures of these patterns
134 occupy sharp edges between the apexes. The temporal patterns of the geographic pixels associated
135 with these apexes are identified as temporal endmembers (EMs).

136 The temporal EMs are then used as the basis for a linear Temporal Mixture Model (TMM).
137 This model treats every pixel time series as a linear combination of the EM time series identified
138 during the characterization phase of the analysis. Inversion of the mixture model effectively
139 unmixes each pixel time series to yield an estimate of the relative contribution (fraction) of each
140 temporal EM to each pixel time series in the dataset. The result is a continuous map showing the
141 relative contribution of each temporal EM pattern at each point in space. The physical meaning of
142 the model result is therefore straightforward (quantitative description of similarity to each EM) and
143 the model inversion is mathematically transparent (ordinary least squares inversion of an
144 overdetermined system of linear equations). This approach also has the benefit of generality, as no
145 portion of the analysis imposes assumptions specific to particular geophysical variables or sensing
146 modalities. The only implicit assumption is that spatiotemporal variance in the data represents
147 potentially useful information.

148 VSWIR versus Thermal Imaging

149 Multispectral optical satellite imaging generally leverages two electromagnetic domains: the
150 reflected optical wavelengths and the emitted thermal wavelengths. VSWIR instruments measure
151 Earth-leaving radiance in the 0.4 to 2.5 μm wavelength range. In this portion of the spectrum, the
152 majority of outgoing radiance is comprised of reflected solar illumination. Data from these
153 instruments can be easily reduced to apparent reflectance, or the fraction of incident sunlight which
154 is reflected by the Earth surface & atmosphere at each pixel, by normalizing the measured radiance
155 (outgoing) by the known solar illumination (incoming). Reflectance can be used to discriminate
156 between Earth materials on the basis of chemical absorptions and microscale physical structure.

157 In contrast, thermal satellite imaging measures Earth-leaving radiance in the 9 to 14 μm
158 range. Because the solar emission curve falls off precipitously at optical wavelengths, the radiance
159 measured by thermal imaging sensors is dominated by the temperature and emissivity of the Earth
160 surface and atmosphere. Because temperature and emissivity are measures of fundamentally
161 different physical attributes than reflectance, VSWIR and TIR data are often analyzed separately.
162 However, the combined use of VSWIR and TIR imagery remains an active area of research –
163 particularly for characterization of evapotranspiration and surface energy balance.

164 For some applications, atmospheric corrections are attempted for both VSWIR and thermal
165 satellite imagery. Atmospheric correction models attempt to remove the effect of absorption and
166 scattering along the two-way path (for VSWIR) or one-way path (for thermal) of radiation through
167 the atmosphere. However, atmospheric correction is dependent upon the ancillary data and choice
168 of model used. For many applications the magnitude of the signal far exceeds that of the correction,
169 and atmospheric correction does not significantly change the analysis outcome. For this analysis,
170 we do not attempt atmospheric correction because we rely on the large differences in reflectance
171 and thermal emission between rice and other land cover types throughout the growing season.

172 **Data & Preprocessing**

173 All data used in this analysis are publicly available. MODIS data were downloaded using
174 both the USGS EarthExplorer website (<http://earthexplorer.usgs.gov/>) and the MODIStools R
175 package (Busetto & Ranghetti, 2016). Landsat data were downloaded using the USGS GloVis
176 website (<http://glovis.usgs.gov/>). Weather station data were downloaded from the CIMIS website
177 (<https://cimis.water.ca.gov/>).

178 MODIS thermal data were downloaded as 8-day composite images (MODIS Product
179 MOD11A2, Version 6) and converted to Daytime Estimated Land Surface Temperature by
180 multiplying by the scaling factor 0.02. MODIS vegetation data were downloaded as 16-day
181 vegetation index composite images (MOD13Q1). The Enhanced Vegetation Index (EVI) product
182 was used and values were retrieved by multiplying by the scale factor 0.0001.

183 The Landsat 8 satellite platform hosts both the Operational Land Imager (OLI) and the
184 Thermal Infrared Sensor (TIRS) instruments. The OLI instrument operates in the 0.4-2.3 μm optical
185 wavelength range and the TIRS instrument operates at much longer (10 – 13 μm) thermal
186 wavelengths. OLI data were calibrated from DN to exoatmospheric reflectance and TIRS data were
187 calibrated to apparent brightness temperature using the standard calibration procedures described by
188 the Landsat Data Users Handbook (USGS, 2016). All TIRS data shown are from Band 10 and OLI
189 data are from bands 2 to 7.

190 The physical bases and foci of this study are the relationships between the annual
191 phenological cycles of the rice crop and other vegetation (agricultural and indigenous), seasonal
192 variations in soil moisture (from precipitation and irrigation), evaporation and transpiration of water
193 and their combined impact on surface temperature. Understanding of these relationships is
194 facilitated by conversion of the measured optical reflectances to fractional abundance of the four
195 most distinctive and functionally important components of the landscape: vegetation, soil, water and
196 shadow. In this study, we focus on the relationship between water and vegetation, but this approach

197 also provides information on soil and shadow which are described in a separate study. The 6-band
198 OLI multispectral reflectance images were used to derive estimates of Substrate (rock & soil),
199 Vegetation, and Dark (water & shadow) subpixel fraction abundance by inverting a linear spectral
200 mixture model using the standardized global endmembers of (Sousa & Small, 2017). The result is a
201 set of coincident image time series of Substrate, Vegetation and Dark fractions and brightness
202 temperatures for each 30 x 30 m pixel in the study area for the 22 cloud-free overpasses of the study
203 area in 2016 and 2017.

204

205 **Analysis**

206 **Regional Thermal Setting**

207 Figure 1 shows a tritemporal thermal composite image of the study area used for this
208 analysis in regional context. The northern portion of the Great Central Valley of California (area
209 within & around the white box) is one of the most productive rice growing regions on earth. The
210 Central Valley lies between the Sierra Nevada mountains to the east and the Coast Ranges to the
211 west. Further east beyond the Sierra Nevada lies the geophysical provinces of the Basin and Range
212 and Mojave Desert. To the west of the Coast Ranges lies the Pacific Ocean. The area to the north of
213 the valley is mountainous and includes the Cascades Volcanic Range.

214

January May August 2016

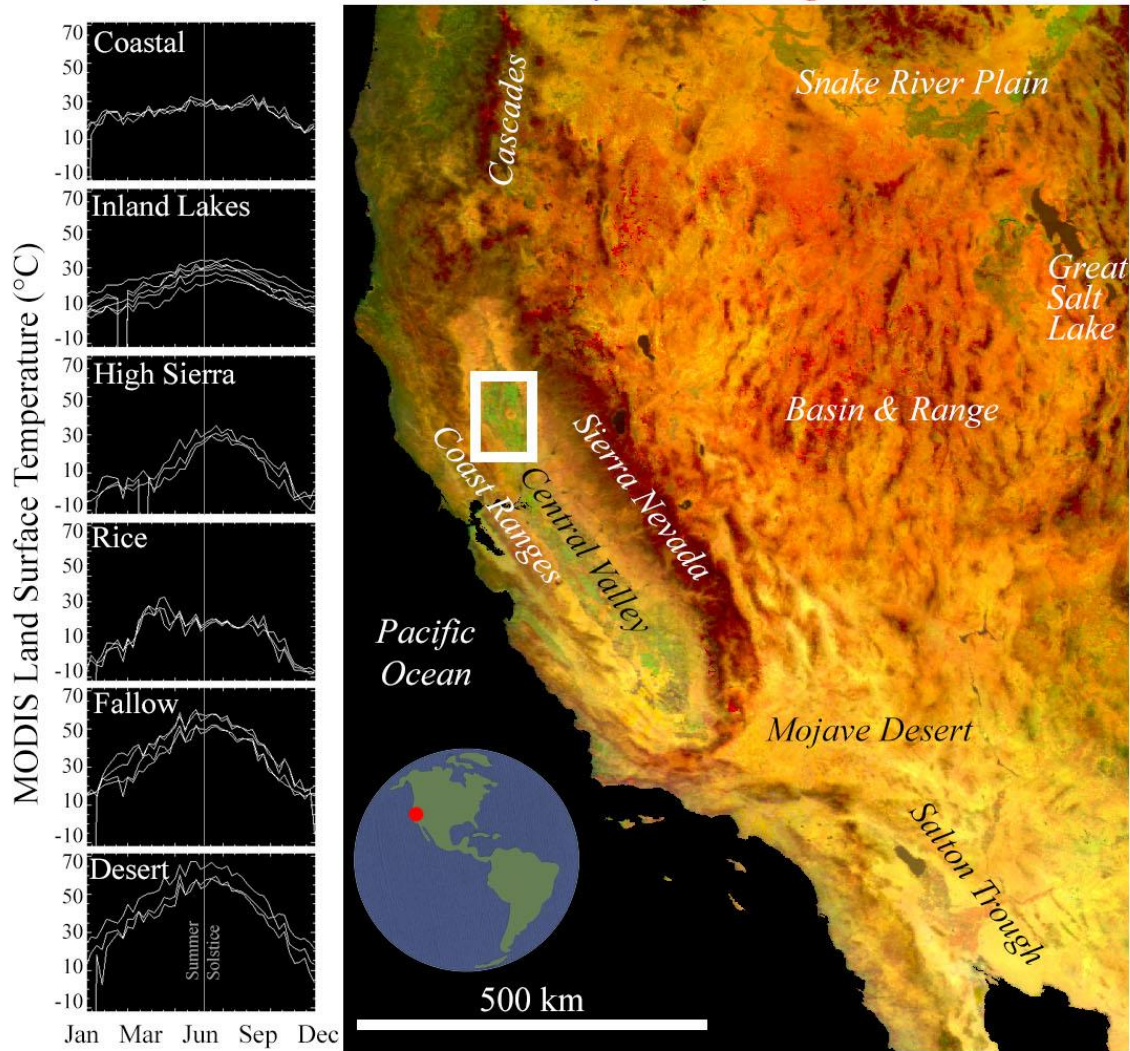


Figure 1. Thermal Phenology of the Western United States of America. The agriculture-dominated Central Valley lies between the Pacific Ocean to the west and the hyperarid Basin & Range and Mojave Desert to the east. The Basin & Range appears as red because it is hotter in August than in May or January. The Mojave and Sonoran Deserts, further south, appear as yellow (red + green) because temperatures are elevated in both May and August. The Sierra Nevada and Cascades mountain ranges appear as dark red because seasonal snowpack suppresses temperatures in January & May. Central Valley agriculture appears as green instead of yellow because evapotranspiration (ET) of dense, fully grown summer crops results in substantial cooling in the August image. Example time series of annual temperature cycle shown for 6 different biogeophysical regions. Coastal areas have relatively small annual range of temperatures due to thermal inertial of the ocean. Forests in the Sierra Nevada & Cascades mountains also have suppressed annual temperature range due to elevation & evapotranspiration. High Sierra locations have a strong annual cycle due to snowpack. Rice agriculture is cooled by paddy water and ET. Fallow and Desert areas have strong annual cycles.

215

216

217

218 Land use in the valley is dominated by intensive agricultural production of a wide range of
219 commodity and specialty crops. The northern (Sacramento Valley) portion is cooler and wetter than
220 the southern (San Joaquin Valley) portion. The Sacramento Valley is characterized by Köppen
221 Climate *Csa* (Hot Summer Mediterranean). The vast majority of precipitation is delivered between
222 the late fall and the early spring, with summers being characterized by dry, hot days with sparse
223 cloud cover. A wide range of soil types exist in California and are distinguishable on the basis of
224 VSWIR reflectance (Sousa & Small, 2018). Clay-rich soils are common in the northern portion of
225 the valley, providing a nearly ideal environment to naturally support the standing water commonly
226 used in intensive rice agriculture. Water in the region is highly controlled through a network of
227 government-run water projects. Effectively all summer agriculture in the Central Valley is irrigated.

228 The colors on Figure 1 illustrate at a glance the typical thermal evolution of the region over
229 the first half of the calendar year. In this figure, the Blue, Green, and Red channels of the image
230 represent brightness temperatures in January, May, and August of 2016, respectively. No locations
231 are bright blue because the landscape is universally colder in January than in May or August. The
232 Mojave Desert appears as yellow (Red + Green) because its temperature generally mimics the
233 annual cycle of solar insolation (bottom time series). In contrast, the Basin & Range further north
234 takes longer to heat up and maps with a more reddish hue. High elevations in the Sierra Nevada and
235 Coast Ranges appear as dark red because seasonal snowpack results in extremely low winter
236 temperatures that then rapidly rise once the snowpack melts in late spring/early summer.
237 Agriculture in the Central Valley and Snake River Plain appears as green because surface
238 temperature in late spring/early summer generally increases before crops have reached maturity.
239 The low thermal inertia of bare, dry fields therefore results in high brightness temperatures in May.
240 Once crops have grown, however, the associated evapotranspiration (ET) significantly cools the
241 landscape during the summer growing season. Typical annual thermal phenologies for Central
242 Valley Rice from the MODIS sensor are shown. In comparison, fields in the Central Valley left
243 fallow, and the grasslands on the foothills of the Sierra Nevada and Coast Ranges, show annual
244 thermal cycles more similar to the desert than the adjacent agricultural fields. Coastal areas,
245 dominated by the thermal inertia of the Pacific Ocean and inundated in fog for much of the year,
246 have similar brightness temperatures year-round. Inland lakes show somewhat more of an annual
247 cycle, but still are characterized by relatively cool, stable brightness temperatures, therefore
248 mapping as dark.

249 Weather stations

250 The California Irrigation Management Information System (CIMIS) maintains an extensive
251 network of field observations of meteorological data throughout the state of California. Four of
252 these stations are relevant for the purposes of this study. Figure 2 shows a map of their locations
253 within the area of the white box from Figure 1. The stations bound the region dominated by rice
254 agriculture (darker green) to the north, south and west. A small mountain range, the Sutter Buttes, is
255 located near the center of the rice zone, providing a convenient landmark for image interpretation.

256

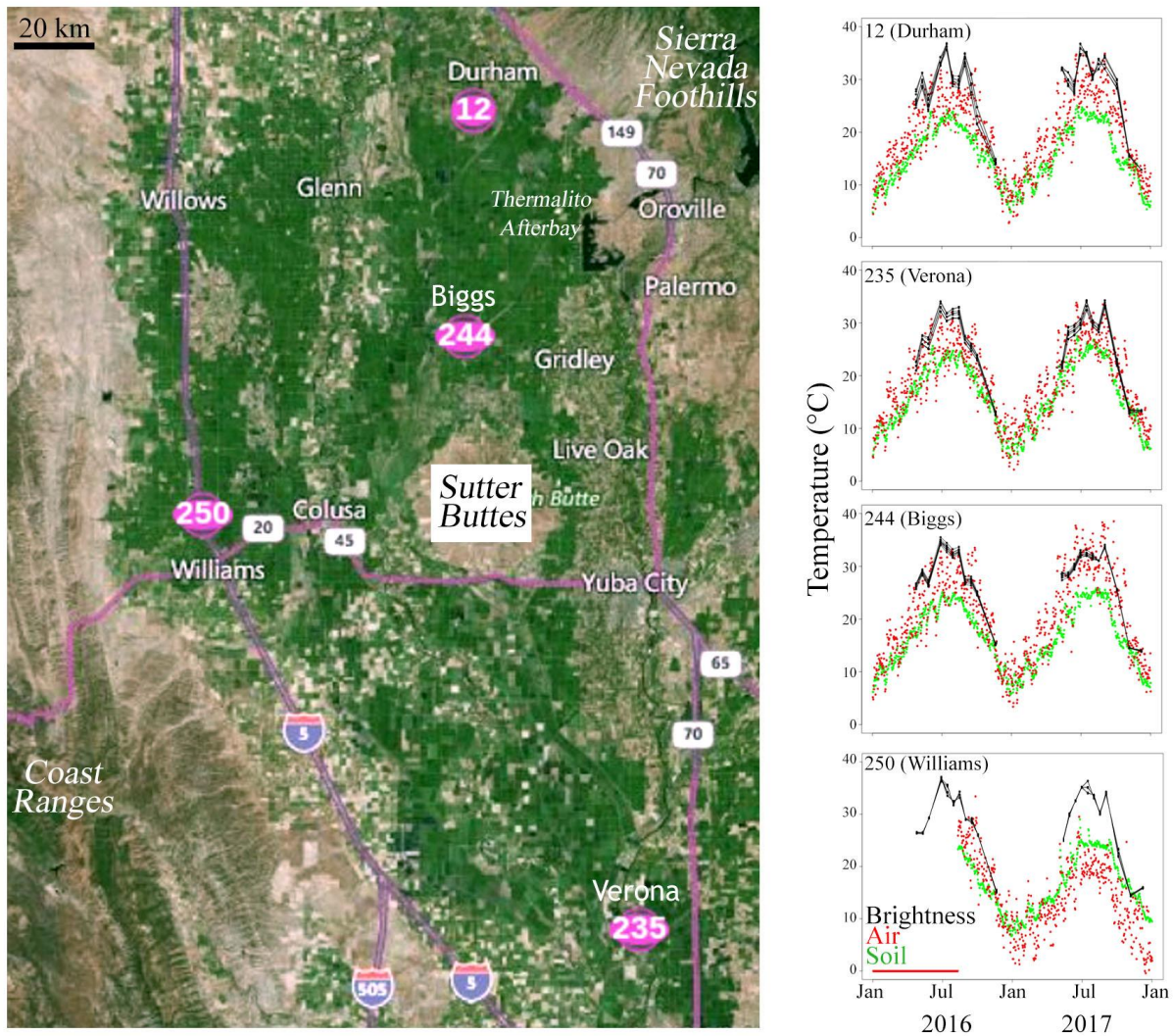


Figure 2. The primary rice producing region of California. The Sacramento Valley supports some of the highest rice yields in the world because of its production methods, fertile soils, and favorable climate. The typical annual thermal cycle of the study area is captured by 4 weather stations maintained by the California Irrigation Management Information System (CIMIS). Air temperatures (red) are generally higher and more variable than soil temperatures (green). For the Durham, Verona, and Biggs stations, temperatures are generally similar, with Landsat-observed brightness temperatures (black) generally near the warmer end of the envelope of air temperatures. The Williams station (installed midway through 2016) has substantially lower air temperatures, but similar soil and brightness temperatures, to the other stations.

257

258 Hourly time series of soil temperature (green) and air temperature (red) are plotted for each
 259 of the stations for both years in the study, along with Landsat-derived brightness temperatures for a
 260 each of the 9 pixels in a 3x3 box surrounding the station location. For stations Durham and Verona,
 261 the Landsat brightness temperature clearly captures the upper portion of the envelope of air
 262 temperatures with very little bias. This is also true for Biggs in 2016, but in 2017 the two records
 263 diverge somewhat at the air temperatures of the Biggs station increase but the brightness
 264 temperatures decrease. The opposite is observed with the Williams station (installed August 2016),
 265 where Landsat brightness temperatures are consistently higher than the station air temperatures. The
 266 Williams air temperatures are also consistently cooler than the soil temperatures for 2017 but not
 267 2016.

268 The variability in agreement between the station data and brightness temperatures may be
 269 related to variations in microclimate related to the siting of each station. While all four stations are

270 immediately surrounded by irrigated pasture, the Durham and Verona pastures are situated within a
271 matrix of tree and row crops, while the Williams and Biggs pastures are surrounded by rice and/or
272 wetlands. It is possible that the more saturated surface hydrology surrounding the Biggs and
273 Williams sensors introduces atmospheric boundary layer effects that impact brightness temperature
274 retrievals. Regardless of these complexities, it is clear that the shape and rough amplitude of the
275 Landsat brightness temperature time series generally agree with the station data, in some cases
276 remarkably precisely, especially given that no atmospheric correction of the Landsat thermal data
277 was attempted.

278 Vegetation Phenology

279 Figure 3 demonstrates a representative annual phenological progression of the region using a
280 series of false color composite images from the calendar year 2016. Each image is enhanced
281 identically, so colors are directly comparable. In these images, the red channel corresponds to the
282 Shortwave Infrared (SWIR, 2.2 μm), the green channel to the Near Infrared (NIR, 0.86 μm), and the
283 blue channel to the visible wavelengths (Vis, 0.55 μm). Soils thus generally appear as brown,
284 photosynthetic vegetation as bright green, and standing water as black. As vegetation senescences, it
285 grades from bright to dull green, through orange and yellow, and into light brown. Images are only
286 shown from April through November because winter months are frequently covered in cloud and
287 rice is not grown during winter, with many fields intentionally flooded to provide habitat for
288 migrating birds.

289

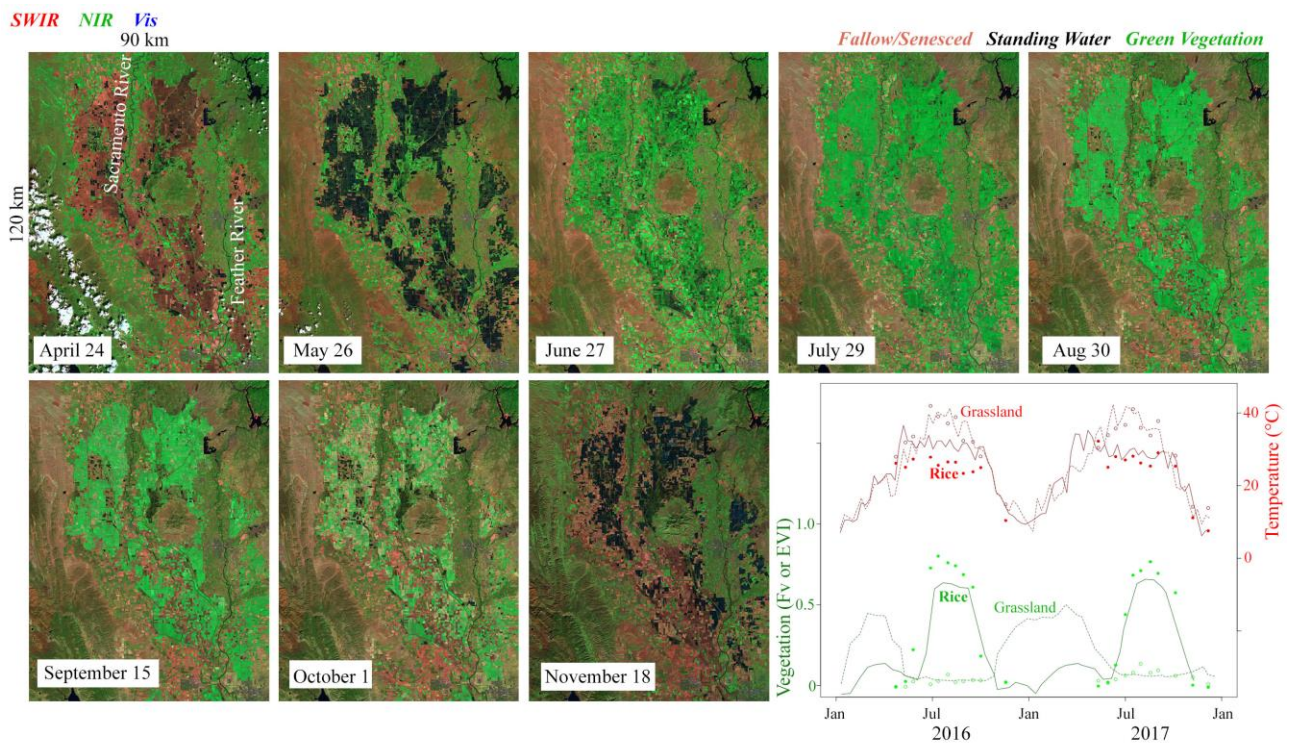


Figure 3. Spatiotemporal evolution of rice in the Sacramento Valley. False color image time series shows the 2016 growing season. Fields are plowed in March, prepared in April, then flooded and aerially seeded in May. The crop reaches maturity around early August. Fields are then drained in mid- to late-August and harvested in September and October. The cropping cycle is clearly represented in time series of MODIS EVI and Land Surface Temperature composites (lines), as well as Landsat subpixel vegetation fraction and brightness temperature (dots). In comparison to grasslands (dashed lines and open circles), rice crops (solid lines and closed circles) show a strong peak in vegetation fraction around July, followed by a gradual senescence which terminates in harvest. The combination of flooded fields and vigorous evapotranspiration results in rice fields being substantially cooler throughout the growing season than adjacent fallow fields. For more information on the rice cropping calendar in this region, see <http://www.rice.ucanr.edu/> or <http://www.calrice.org/>

290

291

292

293

294

Rice is generally grown in the clay rich soils to the east and west of the Sacramento and Feather River channels. The rice growing area can be visually identified as the area of standing water (black) in the May 26 image. The reason for this is due to the phenology of the rice crop in the area, summarized as follows:

295

296

297

298

299

300

301

Many, but not all, rice fields are flooded during winter (November through February or March) to provide habitat for migrating birds. In April, the flooded fields are drained and all rice fields are plowed in preparation for the rice crop. Rice fields are then generally flooded in May and seeded by airplane into standing water. The rice then greens up during the summer months and begins to senesce in September, continuing to senescence and being harvested through September and October. By November the harvest is complete. After harvest, some fields are left bare and others are flooded for winter bird habitat, and the cycle begins again.

302

303

304

305

306

307

308

309

310

311

While rice dominates the landscape, other vegetation also exists. The foothills of the Sierra Nevada, Coast Ranges, and Sutter Buttes largely host rainfed grasslands used for grazing. The phenology of these regions is nearly opposite that of rice agriculture because the grasslands are green during winter and generally senesced and non-photosynthetic during the summer months. In addition, a wide range of other row crops and orchards are grown in the valley with a diversity of cropping systems and phenologies. In this portion of the Central Valley, these other crops are generally grown close to the Sacramento and Feather River channels. These regions also have more complex networks of field geometries and smaller field sizes. Human settlements also occupy a small portion of the landscape, hosting an even more complex mixture of evergreen and deciduous trees, shrubs, and grasses.

312 The time series in the lower right of Figure 3 show typical phenological progression of rice
313 crops (solid) versus native grassland (dashed) in terms of both vegetation abundance (green) and
314 temperature (red). Lines indicate data from MODIS composites and points indicate data from
315 Landsat time series. The more frequent revisit time of the MODIS sensor provides context for the
316 higher spatial resolution Landsat observations. For the MODIS sensor, vegetation is quantified as
317 EVI but for Landsat it is quantified as more accurate Vegetation Fraction (Fv) from a 3-endmember
318 spectral mixture model. Both quantities are scaled from 0 to 1 and the values have been shown to be
319 comparable, with a small bias (Sousa & Small, 2017).

320 As expected from the image time series, the vegetation abundance curves for the rice and
321 grassland pixels are nearly 180° out of phase. Rice has a strong peak in vegetation abundance
322 during the summer growing season, and also a minor peak during the winter fallow season,
323 presumably from non-rice vegetation growing in flooded fields. The grassland pixels have very low
324 amounts of photosynthetic vegetation during the hot and dry summer months because they are
325 rainfed, but reach broad peaks during the winter rainy season of comparable but somewhat smaller
326 amplitude than the agriculture. The benefit of using both MODIS and Landsat for these purposes is
327 evident in that there were no cloud free Landsat images available over a 3-month period during the
328 wintertime, but sufficient usable MODIS images were acquired to produce a reasonable composite
329 product.

330 Thermal Phenology

331 The fundamental physical process underlying the thermal phenology of the region is the
332 seasonal insolation curve. Insolation is sinusoidal with a minimum at the winter solstice and a
333 maximum at the summer solstice, explaining the winter minima for both rice and grassland.
334 However, grassland achieves a much greater summer temperature than the rice because the dry soil
335 and non-photosynthetic vegetation (or absence of vegetation) can support very little
336 evapotranspirative cooling. As a result, the shape of the grassland thermal curve in Figure 3 is
337 roughly sinusoidal, albeit with minor skewness. On the other hand, rice agriculture is not only
338 irrigated but grown in standing water for much of the summer, resulting in substantial cooling both
339 from evaporation of the paddy water below the canopy and transpiration of the respiring and
340 photosynthesizing vegetation. This results in a relatively stable brightness temperature during the
341 summer months, yielding a flatter top to the temperature curve.

342 Although pixel level phenological comparisons can be suggestive, these results must
343 generalize in a spatially coherent way if they are to be used for the purposes of mapping. Figure 4
344 illustrates the spatiotemporal evolution of the field of brightness temperatures and subpixel fraction
345 abundances for the same acquisitions used Figure 3. The left pair of panels shows a tricolor
346 composite image where Red, Green, and Blue correspond to relative fractional abundances of
347 substrate (soil or non-photosynthetic vegetation), photosynthetic vegetation, and dark materials
348 (shadow or water). These relative abundances were computed using the 3-endmember spectral
349 mixture model described in the Methods section. Comparison of these images to the false color
350 composites from Figure 3 provides an intuitive illustration of how the 3 EM spectral mixture model
351 represents the high dimensional reflectance information present in multispectral satellite imagery.

352

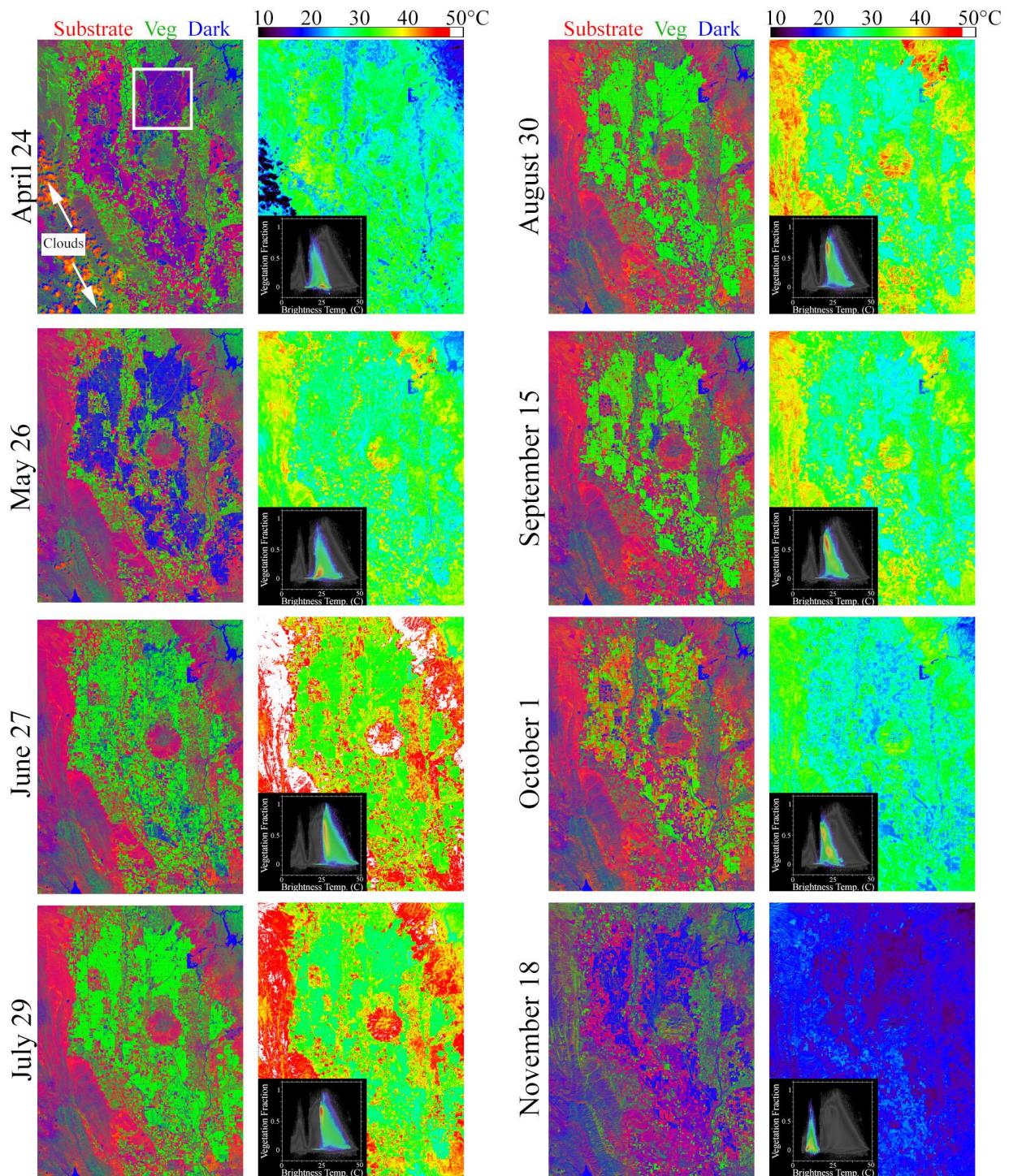


Figure 4. Multisensor evolution of land cover and temperature. Image time series shows Landsat 8 EM fraction abundance (1st and 3rd columns) and brightness temperature (2nd and 4th columns). EM fraction images show fields as bare (dark red, mixture of S and D fractions) while being prepared in April. May flooding is clearly visible (dark blue, high D fraction), as well as the green-up from June to September (from dark green to bright green as fractions trade off between D and V). In October, the fields have begun to senesce and be harvested (orange and yellow, tradeoff between V and S). In November, the harvest is complete and fields are either bare or flooded for habitat for migratory birds. Thermal images are clearly dominated by the seasonal cycle -- with amplitude modulated by ET. Overall, the landscape is cooler in winter than summer, but grasslands and bare fields (dry during summer) can reach summer brightness temperatures of 20°C greater than the flooded and heavily transpiring rice fields. In winter, the differences in brightness temperature between land cover are greatly reduced. Inset plots show the subspace of brightness temperature (X) vs vegetation fraction (Y) for each scene (color) relative to the full space of all 22 scenes for the 2016-2017 time series (grayscale). The white box on the April image indicated the area used for the characterization shown in Figures 5a and 5b.

354 The right pair of panels corresponds to the time series of thermal imagery co-acquired with
355 the optical imagery by the Landsat 8 TIRS sensor. The image time series is scaled from purple to
356 red, with values over 50 °C represented as white. While air temperatures of 50 °C in the region are
357 very uncommon, air temperatures in the 40 – 45 °C range do regularly occur throughout the region
358 in summer months. Brightness temperatures of the land surface can also achieve much higher
359 values than air temperatures.

360 The phenological progression of the thermal image time series complements that of the
361 fraction image time series. In late April, the only prominent spatial patterns in the thermal field are
362 due to elevation, rivers and lakes, and transient clouds. However, as the spring progresses into
363 summer, clear differences emerge between rice and grassland areas. In the late August, September,
364 and October images, differences within the region of rice agriculture become apparent, likely on the
365 basis of evapotranspiration decreasing at variable rates as some fields senesce sooner than others,
366 and some fields are drained before others to prepare for harvest. Once the fields are harvested,
367 substantial differences between land covers are greatly reduced. In fall, the remaining vegetation
368 can actually be somewhat warmer than its dry surroundings due to the greater heat capacity of its
369 leaf water.

370 Finally, the scatterplots in the lower left of the thermal images show the relationship
371 between brightness temperature (x-axis) and vegetation fraction (y-axis) for every pixel in the
372 image. These scatterplots are thus an alternate coordinate system with which to understand the
373 dataset. The scatterplots are color-coded so warmer colors represent more pixels and cooler colors
374 represent fewer pixels. The grayscale background silhouette of the full multitemporal point cloud
375 shows the composite space of all the images together. Because so many pixels in the image
376 correspond to rice agriculture, they generally form the largest cluster in temperature-vegetation
377 (TV) space and are represented by warmer colors. In April, for instance, rice fields are recently
378 plowed so they are cool and totally unvegetated, so the warm colored cluster plots at the bottom
379 center of the space. In May, the fields are flooded they become even cooler but their vegetation
380 fraction does not change appreciably, so the cluster moves slightly to the left. In late June, fields
381 vary widely from just planted (late crop) to nearly mature (early crop), resulting in a wide range of
382 vegetation fraction. ET cools the crop so its temperature does not change appreciably, resulting in a
383 vertically elongated cluster. For the rest of the summer the fields do not change appreciably in
384 vegetation or temperature, so the cluster is stable, until September when many fields are drained
385 and begin to senesce, resulting in the cluster elongating toward higher temperatures. Harvest of the
386 rice crop results in a stepwise change of the TV properties of a rice field. The separation of the point
387 cloud splitting into two distinct clusters by the October 1 image agrees with 2016 USDA estimates
388 that 54% of the California rice crop was harvested by October 9 (Childs, 2016). By mid-November,
389 all the rice has been harvested and the landscape shifts into its winter state. Interestingly, the few
390 usable winter images that exist plot in a nearly disjoint portion of the vegetation temperature space,
391 suggesting that the spatial relationship between vegetation and temperature during winter may be
392 dominated by fundamentally different physical processes than during summer.

393

394 Spatiotemporal Characterization

395 The preceding figures can be summarized by the following set of observations:

- 396 1) The thermal phenology of rice agriculture is substantially different in amplitude and
397 shape from other land cover types in the region;
- 398 2) The parallel evolution of both thermal and vegetation phenology can be explained in
399 terms of the surface hydrologic cycle and growth cycle of the multiple phases of rice
400 crops;
- 401 3) The spatiotemporal variations in brightness temperature have substantial differences
402 from those of the vegetation abundance, despite their interdependence; and
- 403 4) The spatiotemporal variations in both brightness temperature and vegetation fraction
404 can be explained using fundamental physical principles.

405 Put together, observations 1, 2 and 3 suggest that including Landsat brightness temperature
406 in a phenological analysis could add information that is not present using vegetation abundance
407 alone. Observation 4 suggests that such a phenological analysis could be based on straightforward
408 physical principles with a bare minimum of model complexity.

409 A potential approach to this mapping problem is the spatiotemporal analysis method of
410 (Small, 2012). This approach is rooted in spatiotemporal characterization using Empirical
411 Orthogonal Function analysis of the image time series, followed by modeling using linear temporal
412 mixture models. One primary benefit of this approach is that it imposes no assumptions about the
413 functional form of the phenology, but rather characterizes the temporal patterns based on the data
414 itself. Other benefits to the method are its simplicity, robustness, and generalizability, as well as its
415 ability to generate results with straightforward physical interpretations. Because they are based on
416 physical principles and easily identified temporal endmembers representing known phenologies,
417 maps derived from linear model inversion provide a degree of uniqueness of solution that is almost
418 never provided by discrete thematic classifications which are based on ad hoc selection of land
419 cover classes and training data.

420 In order to use this approach with a dual data stream, two decisions must be made. The first
421 decision is whether to incorporate both streams into a single analysis or to analyze each in parallel.
422 We present the results of parallel characterization method here because it is conceptually simpler
423 and achieves the objectives of the current study. The combined characterization and analysis of
424 thermal and vegetation phenology lends itself naturally to the study of ET dynamics and is the focus
425 of a separate study.

426 The second decision is whether to analyze the two years together or separately. Because
427 significant benefits can result from either approach, we present results of both ways in Figures 5a
428 and 5b, respectively. Because the two single-year characterizations yielded similar results, we
429 present only the 2016 results as characteristic of both years of the dataset.

430 For each case, we began by first conducting an EOF analysis of the relevant image time
431 series. We chose unnormalized (covariance-based) rotations in each instance. Normalized
432 (correlation-based) rotations were also investigated, but the resulting feature spaces were less
433 informative. In each case, over 65% of the variance was represented in the first 3 dimensions of the

434 data. While this number is low enough to suggest that informative structure may be present in the
435 higher dimensions of the dataset, the three low-order dimensions capture the most relevant
436 phenological patterns necessary to distinguish rice from other crops and to characterize its seasonal
437 and interannual variability.

438 Figures 5a and 5b summarize the characterization stage of the parallel analyses for single
439 year (2016) and dual year (2016+2017) time series, respectively. Characterization is based on the
440 24 x 24 km subset shown in the white box in Figure 4. We used this spatial subset for our
441 characterization because it is dominated by rice agriculture with a wide range of crop timing. In
442 every case, the loadings of the first 3 spatial PCs are shown as scatterplots. These scatterplots can
443 be conceptualized as representing the location of each geographic pixel in the image time series in a
444 3-dimensional space, known as the Temporal Feature Space (TFS), in which the axes represent the
445 uncorrelated temporal patterns of maximum variance. Clusters in this space correspond to sets of
446 geographic pixels with similar temporal trajectories of the quantity of interest over the course of the
447 two years of the study. Corners in the space represent endmember (EM) temporal patterns which
448 represent pixels with the most distinctive temporal patterns in the image time series. Pixel time
449 series laying inside a convex hull connecting the EMs can be represented as weighted linear
450 combinations of the EM time series. Because these EMs represent observationally derived basis
451 functions, they will form the basis of the forward model to produce fraction maps.

452

2016

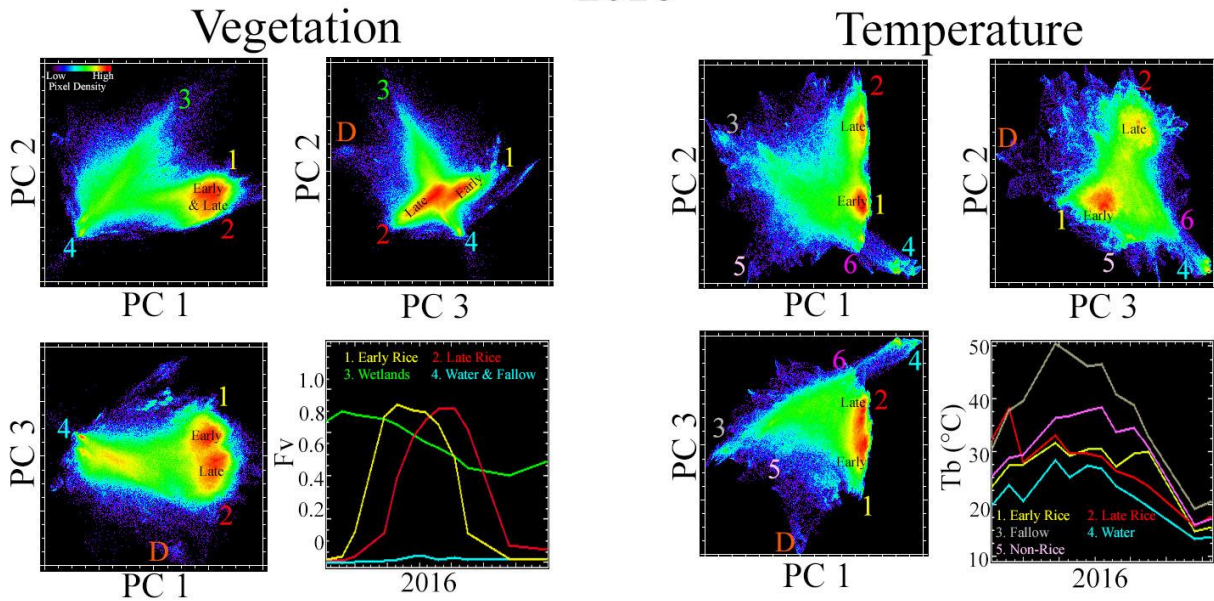


Figure 5a. Comparison of Vegetation Fraction (Fv) versus Brightness Temperature (Tb) temporal feature space (TFS) for the single year of 2016. Each feature space highlights different aspects of the biogeophysical system. The Fv TFS clearly discriminates between early and late cropping, but does not distinguish rice from other crops with similar phenologies. In contrast, rice and non-rice agriculture appear in distinct locations in the Tb TFS. This is likely because Tb is sensitive to the flooding of the fields before harvest, but vegetation fraction is not. However, the late season variability clearly present in the Fv space is collapsed in the Tb space, likely because browning of the top of the canopy occurs over weeks to months, during which time ET is still cooling the field from the green vegetation and water below. These differences are reflected in the EMs of each space. The Fv EMs correspond to Early Rice (1; Yellow), Late Rice (2; Red), Wetlands (3; Green) and Water & Fallow (4; Blue). EMs of the Tb space include Early and Late Rice (3 and 2; Green and Red) as well, but also differentiate between water (4; Blue) and fallow fields (1; Yellow). In addition, non-rice agriculture (5; Light Magenta) and wetlands (6; Dark Magenta; EMs not shown) are distinct in Tb but not Fv. Double cropping (D, Orange, EMs not shown) is also obvious in the Tb spaces. Clearly, the Tb TFS is substantially more complex and features more clustering than the Fv space.

453

454

2016 & 2017

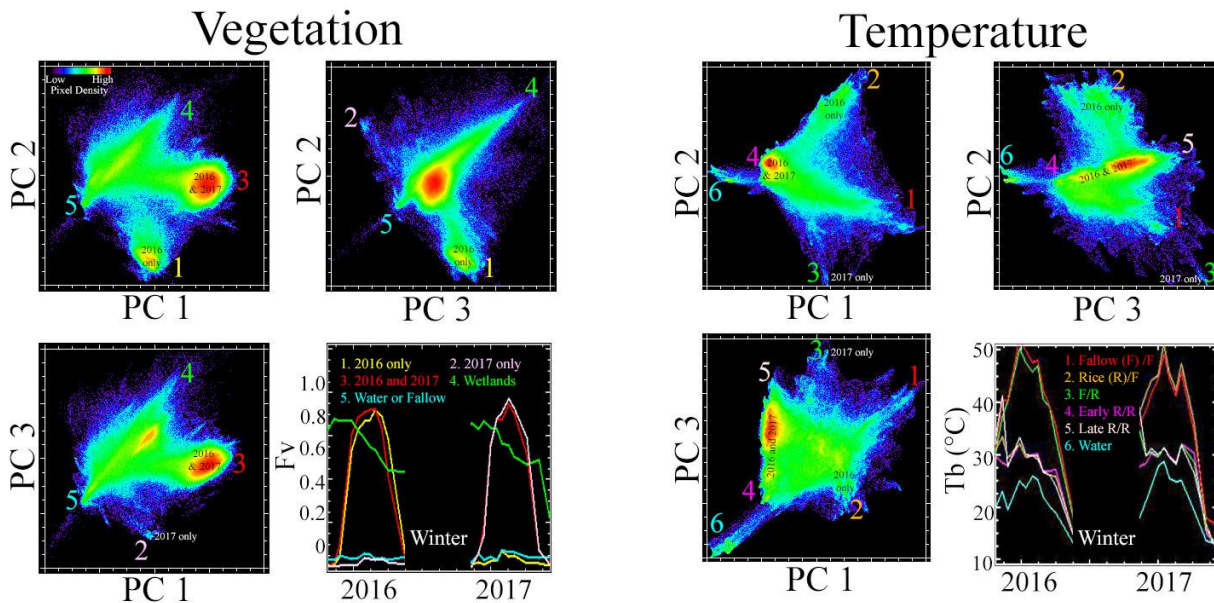


Figure 5b. Joint 2016 and 2017 Fv versus Tb TFS comparison. When both years are analyzed together, the phase information is nested inside the information about year-to-year crop conversion. EMs for both the Fv and Tb TFS now clearly differentiate between fields planted only in one year, fields planted in both years, and fields fallow in both years. Again, the Tb TFS clearly features substantially more clustering than the Fv TFS, suggesting that for rice agriculture in the Sacramento Valley, a greater number of distinct and spatially coherent temporal trajectories exist in Tb time series than Fv time series. Early and late cropping remain as distinct EMs in the Tb TFS, but do not in the Fv TFS.

455

456

457

458 Figure 5a shows a comparison of the TFS for image time series of both vegetation fraction
459 and brightness temperature for the year 2016. The TFS of the vegetation fraction image time series
460 shows four distinct apexes representing the temporal EMs: Early Rice, Late Rice,
461 Wetlands/Evergreen, and Water/Fallow. Time series of vegetation fraction corresponding to these
462 EMs are shown in the lower right. All 4 EMs are clearly distinct on the PC 3 vs 2 scatterplot. The
463 point cloud in this scatterplot forms a cross shape, with the axis between EMs 1 and 2
464 corresponding to phenological timing and the axis between EMs 3 and 4 corresponding to overall
465 vegetation abundance. The Water/Fallow EM forms the sharpest corner, as expected given the very
466 small amount of variability expected in the vegetation fraction of water bodies and fallow fields
467 through time. Early and Late EMs are less sharp but still clearly defined, indicating substantial
468 variability in the timing of the phenological signal. However, the Early and Late clusters are also
469 visibly distinct, indicating two clear phenological groups. The Wetlands EM is the most diffuse, as
470 expected given the wide range of vegetation types, hydrological regimes, and land management
471 strategies for wetlands in the area.

472 The TFS of the brightness temperature image time series shows substantially more
473 clustering than that of the vegetation fraction time series. This indicates that more pixels have more
474 similar brightness temperature trajectories than vegetation fraction trajectories. At least 7 EMs are
475 identifiable. The most distinct from each other are Water (EM 4; blue) and fallow fields (1; yellow).
476 Water time series are particularly distinctive as their very low PC 2 and very high PC 1 and 3 values
477 position them as disjoint from the remainder of the dataset. The remainder of the space partitions
478 into a) differences in timing of rice phenology, and b) differences between rice, non-rice
479 agriculture, and wetlands. Wetlands (EM6) occupy the corner of the point cloud closest to water,
480 and also form an axis grading into fallow fields (EM1). The Fallow-Wetland axis is nearly
481 orthogonal to the Early-Late axis of rice phenology, most clearly seen in the PC 1 vs 3 projection.
482 Non-rice agriculture (EM5) plots on a continuum between the Early Rice and Fallow EMs. Finally,
483 double cropping (D) is clearly identifiable in both the Fv and Tb feature spaces. Few fields in the
484 spatial subset used for this rotation practice double cropping, so this EM is sparsely populated.

485 Figure 5b shows characterization of the dual year 2016+2017 image time series. In both time
486 series, the early/late phase information that dominated the single year time series is suppressed
487 (though still present), and the structure of the TFS is dominated by year-to-year differences in crop
488 presence or absence. In the Fv space, both Wetlands (EM4; green) and Water/Fallow (EM5; blue)
489 are still clear EMs. The largest cluster, however, is now that of fields cropped in both 2016 and
490 2017 (EM3; red). This cluster is clearly distinct from the small cluster of fields cropped in 2017
491 only (EM2; light magenta) and the much larger cluster of fields cropped in 2016 only (EM1;
492 yellow). The fact that the 2016 only cluster is much larger than the 2017 only cluster is concordant
493 with official USDA estimates of 42,000 fewer acres of California rice planted in 2017 than 2016
494 due to higher prices for competing commodities and severe early season flooding (Childs &
495 Skorbiansky, 2017; NASS, 2017).

496 The dual year Tb space again shows more clustering and overall complexity than the
497 corresponding Fv space. At least 6 EMs are identifiable. Again, the most distinct from each other
498 are Water and fields that are fallow in both years (F/F). Water time series are again particularly
499 distinctive as their very low PC 1 and PC 3 values position them as disjoint from the remainder of

500 the dataset. The remainder of the space partitions into a) differences in timing of phenology for
501 fields under rice cultivation in both years, and b) the presence and absence of a rice crop in each
502 year. The axis corresponding to phenology is nearly orthogonal to the axis corresponding to
503 presence/absence of crop in each year. The potential utility of this information is discussed below.

504 While information about the phase of the rice is clearly present in both single year datasets,
505 the Fv space EMs captures more end-of-season variability than the Tb EMs. This could be due to
506 gradual browning of the top canopy layer over weeks to months (resulting in progressive decline in
507 Fv over the second half of the growing season) being accompanied by continual cooling by ET of
508 the green vegetation and paddy water below (resulting in minimal change of Tb). However, the Tb
509 dataset clearly shows enhanced ability to discriminate between rice and non-rice crops, likely due to
510 early season paddy water producing a unique signature in Tb but not Fv. For the dual year
511 characterization, both Fv and Tb clearly discriminate between areas cropped both years versus each
512 individual year, but again Tb shows superior ability to discriminate between rice and non-rice crops.
513 Clearly, analyzing both datasets in parallel may yield substantial benefit over only using one,
514 especially given that the two are co-acquired in all standard Landsat image acquisitions.

515 Temporal Mixture Modeling

516 Figure 6 shows the result of the linear temporal mixture model inversions using sets of EMs
517 from each characterization to map distinct spatiotemporal patterns of rice agriculture. The top row
518 shows the full study area, and the bottom row shows the 24 x 24 km inset area within the white box.

519

Vegetation

Temperature

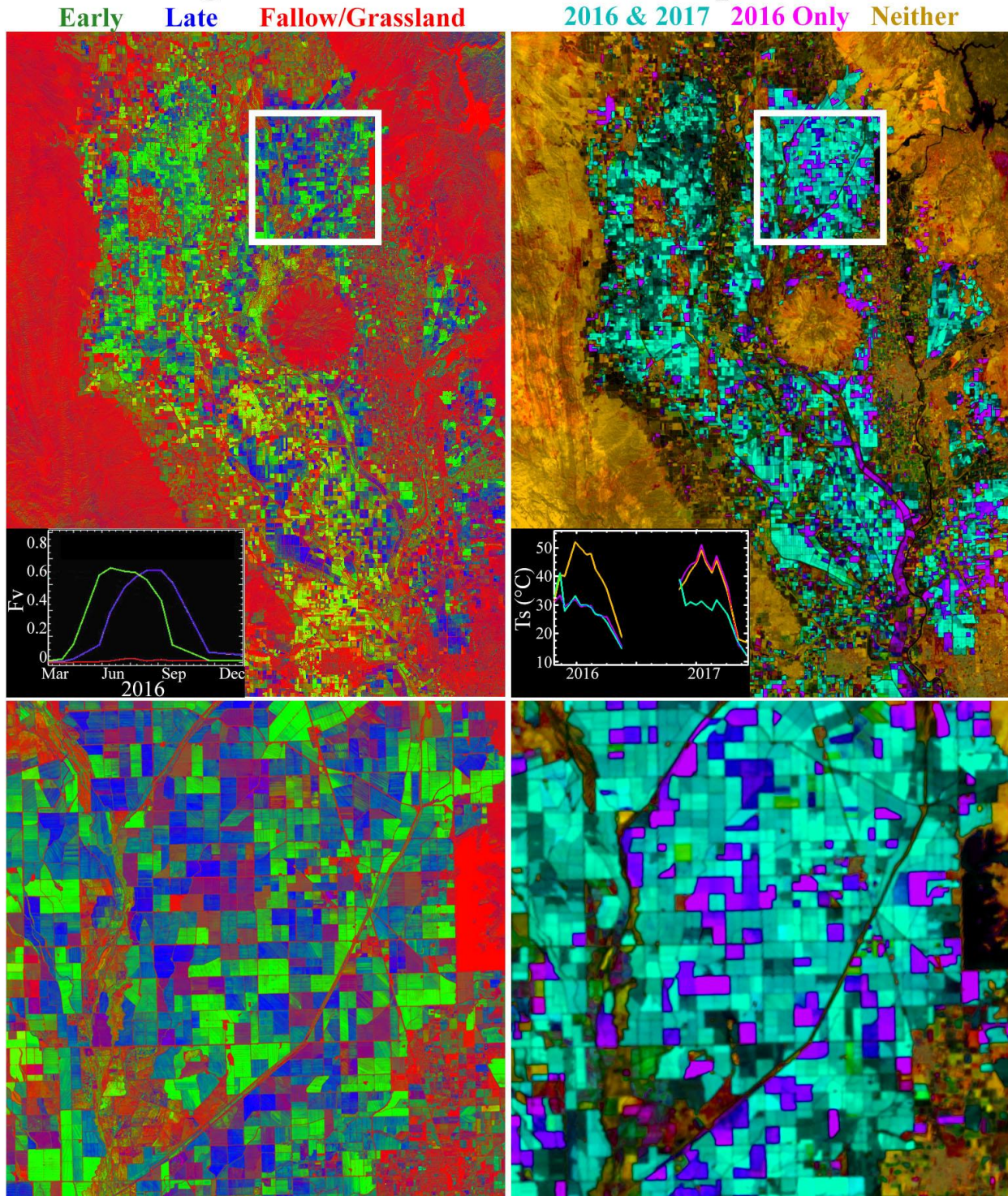


Figure 6. Temporal mixture model comparison. Each pixel in a time series can be modeled as a simple linear mixture of the endmember time series derived from each TFS. Resulting endmember fraction images can then be rendered as maps of temporal patterns. The EMs in the 2016 vegetation fraction TFS clearly separate phenological phase shifts, resulting in a map (left column) of early (green) versus late (blue) versus bare/grassland (red) crops for the 2016 growing seasons. The TMM based on vegetation fraction cannot distinguish between rice and non-rice crops with the same phenological timing. The EMs of the 2016+2017 brightness temperature TFS discriminate between rice and non-rice because the flooded rice paddies are significantly colder than the bare fields present before non-rice crops are planted. The dual-year brightness temperature TMM (right column) clearly shows year-to-year crop transitions. Fields planted with rice in both years (cyan) are clearly distinct from those planted only in 2016 (magenta), and those bare or grassland in both years (orange). The top row shows a regional map, while the bottom row shows a 24x24 km spatial subset (area within box) at full pixel resolution. Time series of the EMs displayed in each model are inset.

521 The left column shows the result of a 3 EM temporal mixture model of vegetation fraction
522 phenology to map timing of the 2016 rice crop using the Early and Late EMs obtained in Figure 5.
523 In this map, green corresponds to Early, blue corresponds to Late, and red corresponds to complete
524 absence of photosynthetic vegetation during the growing season. The saturation of each color
525 corresponds to the similarity of each pixel to each of the EM time series. Greater saturation implies
526 greater similarity to the corresponding EM (or binary mixtures for subtractive colors, while less
527 saturation implies less similarity of the corresponding pixel to any of the temporal EMs. The latter
528 is expected for pixels with phenologies not included in the model. Individual fields are clearly
529 identifiable as either very early (pure green), very late (pure blue) or a mixture of the two (dark
530 cyan). Intrafield heterogeneity in phenology is also clearly present in some cases, showing portions
531 of individual fields growing faster than other portions. The potential utility of Landsat's ability to
532 resolve intrafield spatiotemporal variability is discussed below.

533 The right column shows the result of a 3 EM temporal mixture model of 2016+2017 thermal
534 phenology showing crops in both years (cyan), only 2016, magenta, or neither (dark
535 yellow/orange). The unique temporal signature of rice thermal phenology allows it to be readily
536 identified from other types of agriculture, which map as dull colors corresponding to combinations
537 of EMs. Field-to-field variations in the similarity of each pixel time series to the temporal EMs are
538 present, likely due to a combination of soil moisture during the fallow year and/or greenup phase
539 during the cropped year. Some intrafield variability is also present, likely for similar reasons.

540 While the vegetation fraction TMM maps crop timing with high accuracy, it does not
541 explicitly distinguish between rice and non-rice agriculture. As a result, non-rice agriculture maps
542 in a variety of ways, potentially mimicking rice, depending on its phenological characteristics.
543 Fortunately, the thermal image time series can explicitly capture the phenological signature of rice
544 by leveraging the large early-season difference between cold, flooded, recently planted rice fields
545 and hot, dry, recently planted non-rice fields. Interpreting the two of these phenology maps together
546 therefore provides maximum information about both the location and timing of rice agriculture.

547 Near-Realtime Monitoring & Field Validation

548 To illustrate one potential application of this methodology, we present the results of a TMM
549 generated in the middle of the current (2018) growing season. 2018 presents an unusually
550 challenging case for the model because only the first part of the growing season is available with
551 only 2/3 as many usable images as the same period in 2016 and 2017. The prevalence of cloud
552 cover precludes using many of the spring 2018 Landsat 8 thermal images and the smoke plumes
553 from multiple severe wild fires contaminate many of the late summer images. Through the end of
554 July, only 4 usable thermal images were collected, in comparison to 6 images through the end of
555 July for each of the 2016 and 2017 growing seasons.

556 Figure 7 shows false color composite and thermal image time series for these 4 images. The
557 false color composite images show a clear difference in crop timing between the rice growing areas
558 on the eastern versus western portions of the valley, with the dividing line being approximately at
559 the Sacramento River channel in the north and the Sutter Bypass in the south. The wide range of
560 planting times in 2018, and the overall unusually late crop, is due to complex water management
561 circumstances. Because of the relatively dry winter and associated low reservoir levels, uncertainty

562 existed in early spring about the expected water allocations that rice farmers would receive. Heavy
563 April rains then boosted allocations, but also forced farmers to wait for the clay-rich soils to dry
564 before it was possible to bring tractors onto the fields to laser level them. The fields which had
565 already been prepared could be flooded and planted on time, but those which had not were forced to
566 plant significantly later than usual. A brief description of the situation is described by (Linguist,
567 2018) and expected impacts of this situation are broadly described by (Childs & Skorbiansky,
568 2018).

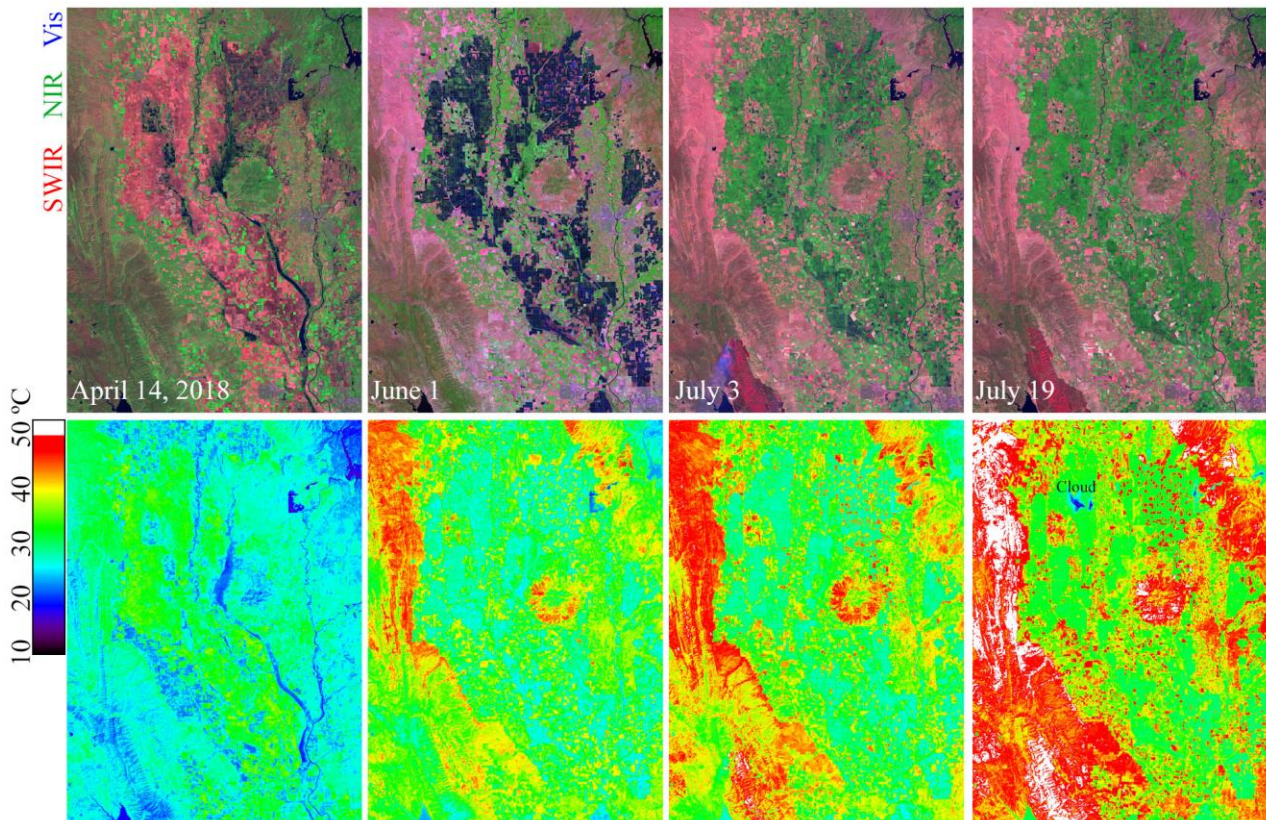


Figure 7. 2018 stress test. 2018 presents a difficult case for monitoring model to capture because unusually frequent cirrus cloud contamination early in the season results in only 4 usable images through the end of July. VSWIR imagery shown in top row as false color composites and TIR imagery shown in bottom row. Relatively low reservoir levels combined with unusually heavy April rains during the time of field preparation resulted in an unusually wide range of planting dates. In the April image, the western part of the valley is clearly drier than the eastern part of the valley. This resulted in earlier planting & green-up in the east, clearly visible in the June & July images. Some fields were never planted at all, resulting in the checkerboard pattern in the July thermal imagery particularly prominent north of the Sutter Buttes.

569

570 A TMM condenses the information from these 4 images of brightness temperature into a
571 single map, show in Figure 8. In this model, red corresponds to grasslands and fallow fields, green
572 corresponds to early rice, and blue corresponds to water and non-rice crops. Despite the limited data
573 availability in 2018, and the fact that this map is produced mid-season with no data on senescence
574 or harvest, the areas in which rice are grown are clearly identifiable. The broad east-west dichotomy
575 in planting date described by (Linguist, 2018) is clearly evident in the discrepancy between bright
576 and dull green map color.

577

Grassland/Fallow Early Rice Non-Rice

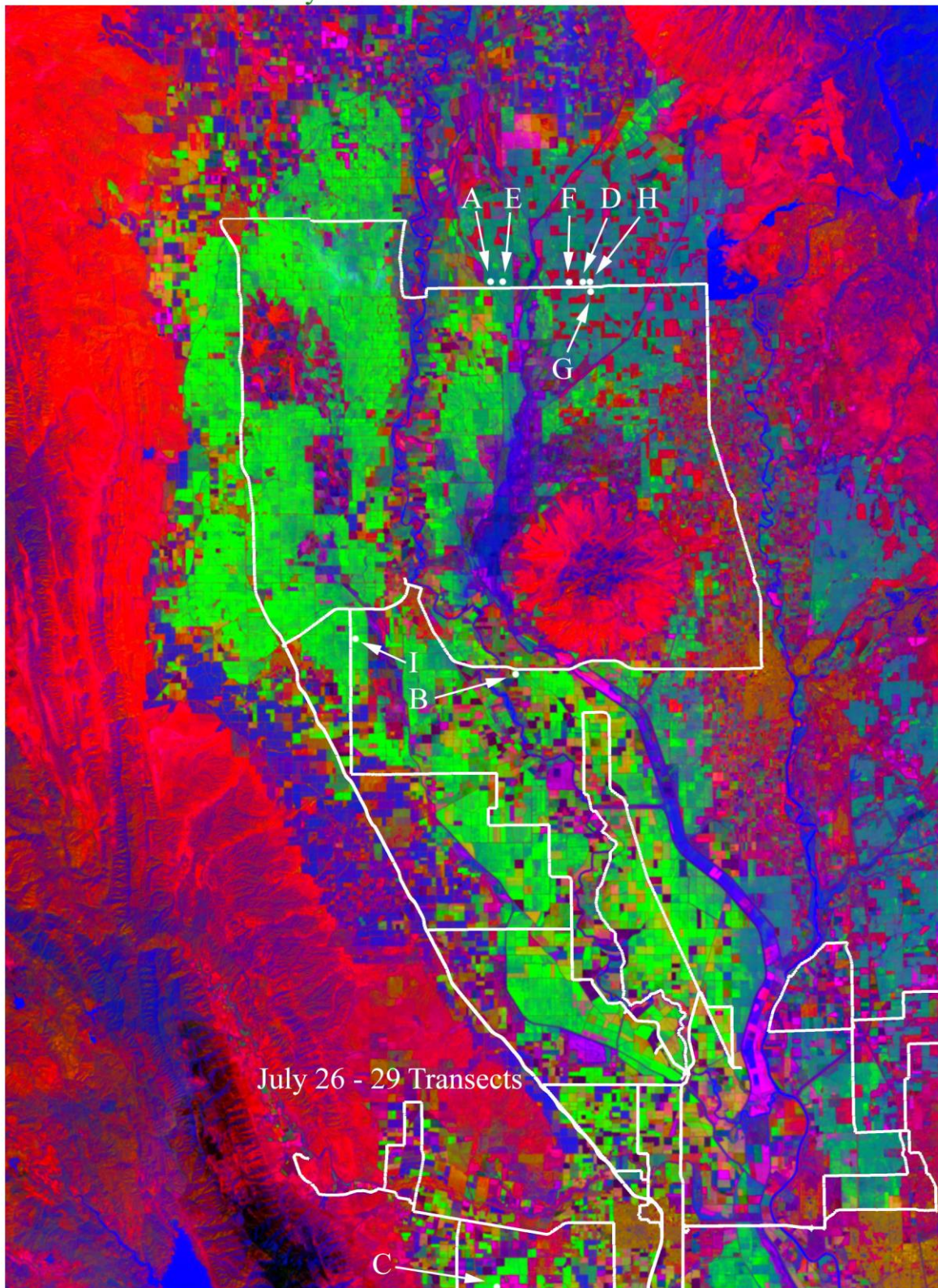


Figure 8. Mid-season temporal mixture model for 2018. Even using only 4 images from the first half of the current growing season, the Tb-based TMM discriminates between rice and non-rice vegetation, as well as between early (bright green) and late (dark green) rice crops. Field validation was conducted between July 25 and 29, 2018 through over 1650 km of driving transects, 8500 field photos, and 380 VNIR field reflectance spectra. False negatives (actual rice not captured by the model) are very rare, but false positives (non-rice crops mapped by the model as rice) do occur in some places. These occur in places where the field was fully green and/or heavily irrigated at the time when rice paddies are flooded. White circles with letters and arrows correspond to locations of field spectra in Figure 10.

579 This TMM is validated with over 1650 km of field transects collected between July 26 and
580 29 (white lines), including over 8500 field photos and 380 VNIR reflectance spectra. The locations
581 of the field spectra are labeled in white and will be discussed further in Figure 10. Comparison of
582 field photos to map output shows the model to produce <1% false negatives (i.e. fields planted as
583 rice but not captured by the model). However, approximately 11% of fields in the model were
584 identified as false positives (fields in which rice was not planted, but mapped by the model as rice).
585 The reason for the prevalence of false positives in the 2018 model is straightforward, as only 1
586 image captures the rice in the phase in which it is dominated by standing water. Because the thermal
587 signature of standing water can sometimes be similar to that transpiring vegetation, the thermal time
588 series of any crop which was bare in mid-April but already fully green by June 1 would mimic that
589 of the rice. This thermal mimicking could potentially be resolved by building a more complex
590 model in which both vegetation fraction and brightness temperature are used. However, for the
591 purposes of simplicity and illustration of the method outlined in this work, we defer a detailed
592 examination of the strengths and weaknesses of more complex models to a future study.

593 VNIR field spectra were collected with an ASD HandHeld2 field spectrometer on July 29.
594 Wildfires were active in the Coast Ranges to the west and north of the study area from mid July
595 through late August, 2018. As a result, substantial atmospheric contamination was present during
596 both during collection of the field spectra and satellite imaging immediately before, during, and
597 after the field campaign. When compared to both same-day Sentinel-2 spectra (corrected with the
598 ESA Sen2Cor algorithm) and Landsat 8 spectra from August 4, 2018 (corrected with the
599 NASA/USGS LaSRC algorithm), the field spectra acquired were higher reflectance across all
600 wavelengths than the satellite spectra. We interpret this as resulting from substantial indirect
601 illumination by haze from the fires, view angle discrepancies due to the field spectrometer being
602 held slightly off-nadir, and the unavoidable difference in measurement distance between the
603 Spectralon white standard (used for calibration) and the distance from the rice canopy necessary to
604 sample a representative mixture of foliage and exposed paddy water (or soil). Fortunately, however,
605 the phenological progression depends on relative differences in reflectance with wavelength rather
606 than absolute differences between sensors. In order to facilitate comparison of spectral shapes, the
607 overall amplitudes of the field spectra were adjusted by simple scaling by constants in the range 0.5
608 to 0.8.

609 Figure 9 shows the corrected field spectra at full spectral resolution (thin gray) and the mean
610 spectrum (thin black) for reference, as well as convolved with the broadband spectral response
611 functions of the VNIR bands of the Landsat 8 OLI sensor (thick blue). These are shown in
612 comparison to the actual observed Landsat 8 spectra from the August 4 Landsat 8 image (thick
613 gold). In some cases (A-C), the agreement between the synthetic and observed Landsat spectra is
614 remarkably good, even despite the significant atmospheric problems discussed above and the nearly
615 1 week between field and satellite data collection. In other cases, the spectral shape at visible
616 wavelengths is distorted (D-F) or there is an overall loss of contrast (G-I) in the satellite spectra.
617 These imperfections are likely due a combination of 1) changes in the state of the atmosphere in the
618 10s of seconds between field calibration to white standard and collection of reflectance spectra, and
619 2) the inability of the atmospheric correction model to capture the complex scattering and
620 absorption effects of the smoke plumes.

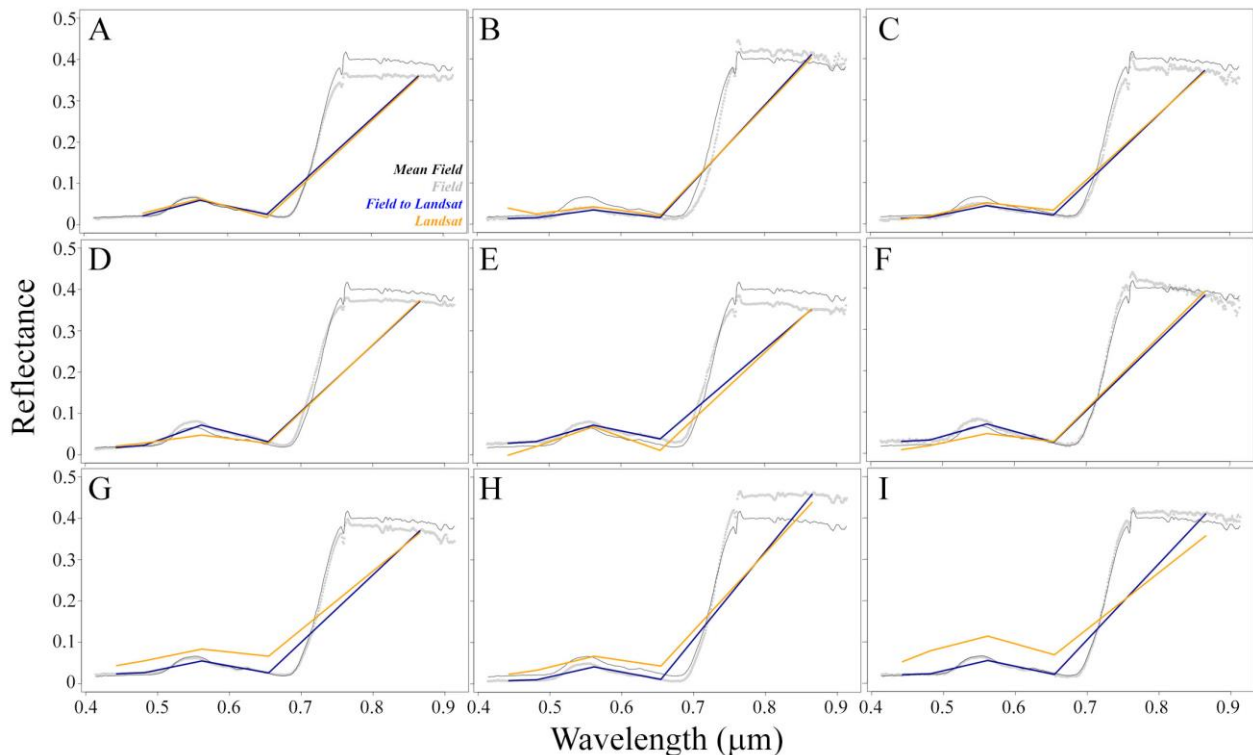


Figure 9. Comparison of field and satellite spectra. Continuous field spectra (light gray) were collected only July 28 and 29 at 9 rice fields, then convolved to bands 2-5 of the Landsat 8 OLI sensor (blue). These are then compared with actual Landsat spectra from the same locations imaged on August 4 (gold). The Landsat spectra were atmospherically corrected with the standard LaSRC atmospheric correction. In some cases (A-C) the synthetic and observed Landsat spectra agree remarkably well, especially given the pervasive atmospheric effects due to fires present during both the days of field measurement and satellite overpass and the nearly 1 week of time elapsed. In other cases (D-F), the overall ranges of the spectra are similar but the shape in the visible is notably distorted. In yet other cases (G-I), loss of contrast is observed, likely due to aerosol contamination incompletely corrected by the LaSRC model. Locations of field spectra are shown in Figure 8.

621

622

623

624

625

626

627

In addition to the comparison with broadband observations, field spectra show subtle features which are not captured by multispectral instruments. Changes in the brightness of the visible red are likely due to Chlorophyll-b and other plant pigments. In addition, changes in the curvature at the base of the red edge (0.69 – 0.71 μm), as well as variations in slope at the top of the red edge (0.8-0.9 μm) have the potential to be leveraged in future work for investigations into nutrient stress and phenological progression of plant functional traits.

628

629

630

631

632

633

634

635

636

637

638

Finally, sample field photos showing rice at a variety of stages are shown in Figure 10. In late July, 2018, rice in the Sacramento Valley could be observed in a range of stages of maturity (photos A-C). The prevalence of weeds widely varied among fields (D and E). Abundant waterfowl (F) could be observed feeding in the rice fields. Viewed from above, weedy rice fields (G) were clearly distinct from weed-free fields (H). Substantial standing water background was observed in nadir-looking photos. The importance of view angle can be clearly seen when comparing (H) and (I), as rice fields of this age are fully opaque when viewed obliquely but not when viewed from nadir. A wide diversity of other agricultural land covers were also present in the valley, including sunflowers (J), fruit and nut orchards (K), rice straw (L), bare soil (M), alfalfa (N) and tomatoes (O).

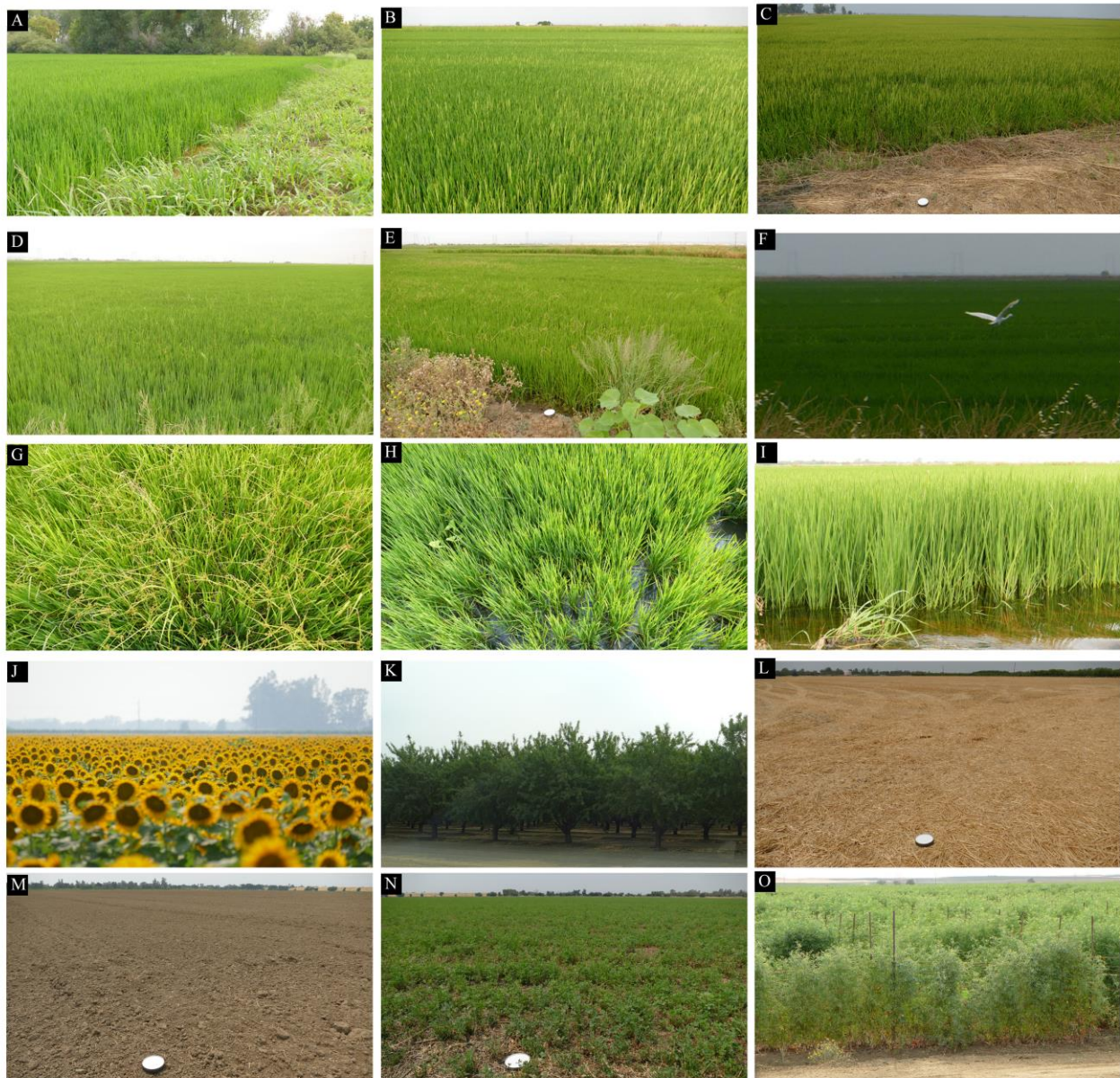


Figure 10. Photos from July 2018 field validation campaign. In late July, rice was present in a wide range of stages from not yet heeded (A) to partially and fully heeded (B and C). Weeds were visibly present at a range of abundances in some fields (D and E). Waterfowl (F) continue to hunt in the rice paddies during the growing season. Viewed from near nadir, weeds (G) and standing water below the rice plants (H) are clearly visible. The importance of view angle is clearly evident when comparing these photos to side-on photos like I. A wide range of other agricultural land covers is present in the valley, including sunflowers (J), fruit and nut orchards (K), wheat stubble (L), bare fields (M), alfalfa (N) and heirloom tomatoes (O).

639

640 Discussion

641 The topological structure of the low order temporal feature spaces provides a detailed yet
642 intuitive characterization of the thermal and vegetation phenology of the 2016 and 2017 rice crops
643 in the Sacramento Valley. The clearly distinguished temporal endmembers spanning the feature
644 space correspond to distinctive and easily verified land cover phenologies with straightforward
645 interpretations in terms of vegetation abundance and brightness temperature at decameter scales.
646 The clear distinction of the temporal endmembers, and the fact that they bound almost all the pixels
647 in the feature space, allows them to be used as the basis for a linear mixture model that can be
648 inverted to yield pixel scale similarity metrics for each temporal endmember. The resulting
649 endmember fraction maps provide continuous field maps of both vegetation and thermal phenology
650 of multiple rice crops as well as other land cover types. While the continuous field maps provide

651 the most information on the spatiotemporal evolution of the rice crops, the clear presence of distinct
652 clusters within the temporal feature spaces suggests that the continuous field maps could be
653 discretized into thematic classifications if necessary. The spatiotemporal clustering highlights clear
654 distinctions between the multiple phases of rice cropping, as well as from other land cover types
655 with different phenologies.

656 The ability to rigorously map and monitor the state of rice agriculture with optical satellite
657 imagery has a wide range of potential implications. Obvious implications include potential
658 improvement in harvest date prediction for food security and commodities applications, weed
659 management, and sub-field level crop health and nutrient stress. Less obvious implications include
660 potential application to evapotranspiration (ET) studies, water use models, and pest management
661 strategies based on spatial network approaches. We discuss each of these potential implications in
662 turn.

663 1. Harvest prediction

664
665 In many regions of the world the prediction of rice harvest is hindered by lack of basic
666 information. While providing accurate estimates of yield from satellite imagery can be difficult
667 because of the range of factors that can contribute to the harvest, it is likely that fundamental
668 variables such as planting date and total area under cultivation could be better constrained with the
669 joint VSWIR-Thermal temporal mixture model approach presented here. In particular, TMMs based
670 on single-year time series show the potential to map crop timing and dual-year time series show the
671 potential to identify changes in the location and overall abundance of planted fields. This could
672 improve one set of inputs to complex yield models which also rely on a significant amount of
673 additional ancillary information, as well as work synergistically with other rice crop monitoring
674 systems such as the methodologies proposed by (Boschetti & Stroppiana, 2009), (Torbick et al.,
675 2011) and (Nelson et al., 2014).

676 677 2. Intra-field variability: weed and nutrient management

678
679 Examination of decameter image time series from sensors such as Landsat and Sentinel
680 reveals considerable intra-field heterogeneity in the time series of green-up and senescence. These
681 within-field variations likely arise as a result of imperfections in field leveling, flooding, and
682 drainage; variability in weed and nutrient management; and heterogeneity in planting density. The
683 information present in these variations could be leveraged using active management strategies for
684 precision agriculture. In conjunction with unmanned autonomous vehicles, localized application of
685 fertilizer and herbicide could be targeted to areas of concern with a potentially significant reduction
686 in environmental impact and cost to the grower. The growing prevalence of VNIR hyperspectral
687 imaging sensors has the potential to contribute significantly to these problems by discriminating
688 between individual absorption features such as those visible in the field spectra of Figure 10.

689 690 3. Pest management

691
692 Some pests require proximity in order to transmit from one field to another. Large,
693 interconnected regions growing similar crops may provide transmission opportunities for these

694 pests. Transmission could be minimized by a basin-scale management approach based upon
695 strategic disruption of spatial networks of agriculture. Accurate crop-specific maps could provide a
696 useful input into a network-based approach to understanding agricultural landscape evolution such
697 as explored in (Sousa & Small, 2016).

698

699

700

701

702

703

704

705

706

4. Evapotranspiration and water use

ET has been shown to be remarkably consistent for rice fields throughout the growing season (Linguist et al., 2015). Indeed, the relative stability of the brightness temperature and area of illuminated photosynthetic vegetation of rice fields are a part of the reason why the joint VSWIR-thermal mapping approach is so well suited to rice in particular. This is shown explicitly in the spatiotemporal composite Brightness Temperature versus Vegetation Fraction (TV) space for all 22 images in the 2016-2017 time series, shown in Figure 11.

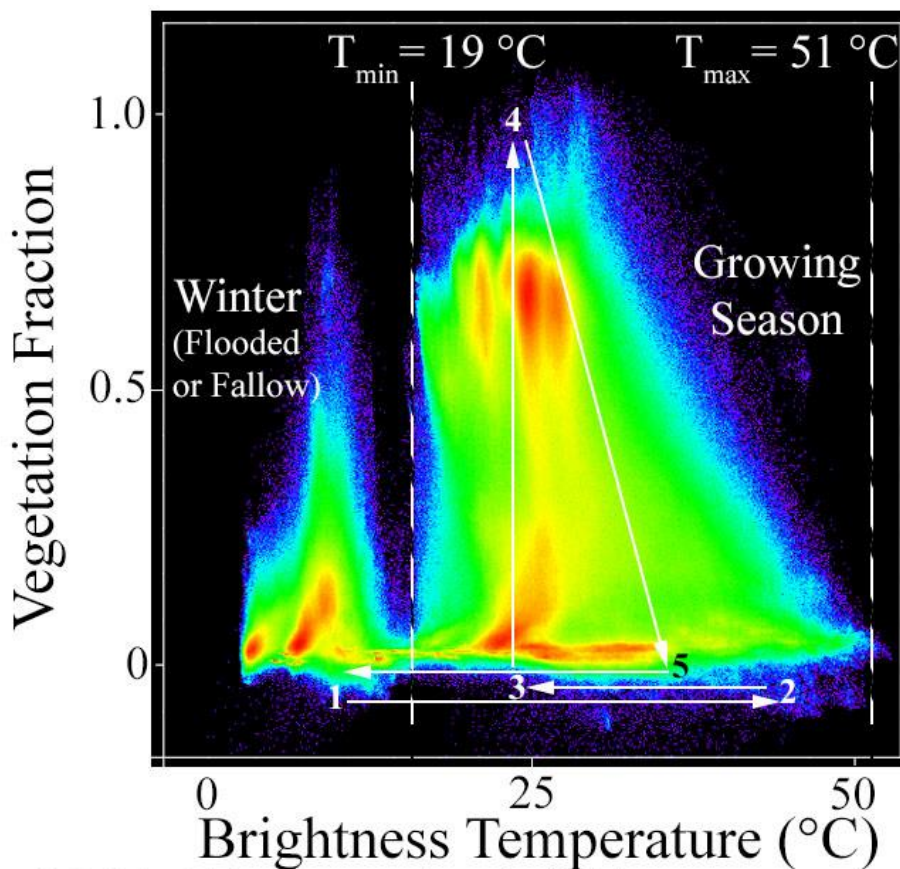


Figure 11. Relationship between vegetation and soil brightness temperature throughout the study period. A clear gap is present between the soils during the summer growing season (higher T) and winter fallow season (lower T). Physical bounds to growing season temperatures are easily recognizable, yielding straightforward values for T_{min} and T_{max} as defined by Carlson et al., 1994. Schematic rice phenological trajectory shown with white arrows. Rice fields are unvegetated and cold in winter (1). In spring, the fields are drained and leveled, remaining unvegetated and sometimes reaching high temperatures due to the low heat capacity of dry soil. Fields are then flooded and planted (3), after which point the rice plants begin to grow until maturity (4). In late summer and early fall, plants senesce and then are harvested in mid-to-late fall (5). After harvest, many rice fields are then flooded again, returning them to their winter state (1).

707

708 The composite TV space shown in Figure 11 is particularly illuminating when viewed in
709 relation to the 8 of its subsets shown earlier in Figure 4. The wide range of Tb values shown at near-
710 zero Fv is primarily due to the substantial discrepancy between the relatively high heat capacity of
711 water and the much lower heat capacity of dry soil (and synthetic surfaces like pavement). In
712 contrast, the much more constrained range of values at high Fv values is likely a reflection of the
713 thermal stability of dense, well-watered, respiring vegetation. The warm-colored clusters in this
714 space represent groups of geographic pixels with similar TV properties. At low values of Fv these
715 are likely bare fields with similar moisture contents and tilling practices. In contrast, the clustering
716 at high Fv values likely corresponds to rice fields imaged at different dates, with differences in
717 water temperature resulting from fluctuations in air temperature due to weather within the growing
718 season.

719 At least two additional features of this plot suggest potential avenues for future work in
720 application to ET, following the Triangle Method introduced by (Carlson et al., 1994) and reviewed
721 by (Carlson, 2007). First, the remarkably straight edges suggest the Sacramento Valley may be a
722 particularly good location for this approach to ET mapping. This could be due to a combination of
723 the large field size, prevalent irrigation, and dominance of agriculture in the landscape. Second, a
724 clear division between the growing season and the winter is also evident, suggesting the relationship
725 between temperature and vegetation can be described as alternating between (at least) two physical
726 regimes over the course of the year. Moving forward, spatiotemporal analysis of satellite-derived
727 ET estimates has the potential to make progress toward all 5 of the requirements of the Path
728 Forward outlined by (Fisher et al., 2017). Detailed comparison of ET estimates from this simple
729 method of estimation versus more complex ET models present an attract avenue for future work.

730 5. View Angle & Flooding Presence

731 Because rice is an erectophile plant, small differences in off-nadir viewing geometry can
732 produce significant differences in reflectance. Specifically, the background of paddy water or soil is
733 most pronounced when nadir-looking and rapidly becomes less significant when viewed off-nadir.
734 Sufficient data now exists to quantify this effect at various stages throughout the rice life cycle.
735 Understanding the size of this effect has the potential to determine at what stages of development
736 the flooding or drying of the substrate below the rice can be accurately determined, with potential
737 implications for verification of alternative cropping practices such as alternate flooding & draining
738 of fields.

739 6. Sharpening the thermal field

740
741 Thermal imagery is generally collected at coarser spatial resolution than VSWIR imagery
742 because the amount of radiance being measured at thermal wavelengths is much less than that being
743 measured at VSWIR wavelengths. This allows for the use of higher resolution VSWIR imagery to
744 sharpen lower resolution TIR imagery collected simultaneously (see (Zhan et al., 2013) for a review
745 of thermal disaggregation approaches). The consistency of the relationship between vegetation
746 fraction and brightness temperature could be leveraged to develop a method to sharpen thermal
747 imagery to VSWIR spatial resolution specific to rice-dominated landscapes. While not particularly
748 necessary in a landscape with large fields sizes like the Sacramento Valley, this could provide

749 substantial benefit for ET monitoring in areas dominated by smallholder rice agriculture which are
750 present throughout the developing world.

751 7. Integration of new data streams

752 While retrospective analysis of agriculture from satellite imagery must rely on whatever data
753 has already been collected, in the future increased data availability has the potential to significantly
754 advance the ability of optical remote sensing to constrain dates of phenological transition. As revisit
755 times shorten and spatial resolution increases, the potential for near-realtime monitoring and
756 discrimination between subtle signals improves considerably. In particular, incorporation of now-
757 active Sentinel-2 VSWIR imagery and soon-to-be-available Sentinel-3 thermal imagery will be an
758 obvious next step in the near future.

759 In addition, every daytime satellite overpass has a corresponding nighttime overpass. This time
760 is often used for optical Earth imaging satellites to conduct housekeeping procedures like data
761 downlinking, cooling, and calibration, but recent improvements in sensor and platform design allow
762 for more frequent nighttime imaging. The potential to leverage day/night pairs of thermal imagery
763 for ET purposes is another avenue for future work.

764 Finally, future sensors providing hyperspectral capability in the VSWIR and multispectral
765 capability in thermal wavelengths may provide significantly enhanced ability to discriminate
766 between differences in specific absorptions due to leaf chemistry as well as subtle differences in
767 emissivity and brightness temperature. The recent placement of the ECOSystem Spaceborne
768 Thermal Radiometer Experiment (ECOSTRESS) sensor onto the International Space Station, and
769 the planned launch of hyperspectral missions such as NASA's Surface Biology and Geology (SBG)
770 and DLR's EnMap, have the potential to substantially enhance the ability of the scientific
771 community to map and monitor rice agriculture.

772 **Conclusion**

773 The combined spatiotemporal analysis of decameter scale VSWIR and thermal imaging
774 shows considerable promise for improvements to the mapping and monitoring of rice agriculture.
775 Using the Sacramento Valley of California as a test area, we characterize the phenology of rice
776 agriculture in the area in terms of both vegetation abundance and brightness temperature.
777 Characterization of single-year time series readily yields information about early/late crop timing,
778 while dual-year characterization provides information about year-to-year crop conversion.
779 Surprisingly, parallel spatiotemporal analyses of coincident vegetation fraction (retrieved from
780 VSWIR reflectance) and thermal imagery show considerably more clustering in the thermal image
781 time series than in the vegetation fraction in both single- and dual-year time series. Investigation of
782 the temporal feature spaces suggests that vegetation fraction time series data show particular
783 promise for estimating crop timing, while brightness temperature appears particularly well suited to
784 distinguish rice from other crops. Sample monitoring results from the 2018 growing season show
785 considerable promise for near-realtime mapping of rice phenology using partial-season TMMs.
786 Field validation confirms that mid-season monitoring models can provide an accurate upper bound
787 estimate of the spatial extent and relative timing of the rice crop, even under conditions of relative
788 data scarcity. These results could have potential implications for food security, precision
789 agriculture, pest management, and ET.

790 Acknowledgements

791 Work done by DS was conducted with Government support under FA9550-11-C-0028 and awarded
792 by the Department of Defense, Air Force Office of Scientific Research, National Defense Science
793 and Engineering Graduate (NDSEG) Fellowship, 32 CFR 168a. CS was supported by the NASA
794 MultiSensor Land Imaging program (grant 14-LCLUC-14003).

795 References

- 796 Boschetti, M., & Stroppiana, D. (2009). Multi-year monitoring of rice crop phenology through time
797 series analysis of MODIS images. *International Journal of ...*. Retrieved from
798 <http://www.tandfonline.com/doi/abs/10.1080/01431160802632249>
799 Busetto, L., & Ranghetti, L. (2016). MODISStp: An R package for automatic preprocessing of
800 MODIS Land Products time series. *Computers & Geosciences*, 97, 40–48.
801 <https://doi.org/10.1016/j.cageo.2016.08.020>
802 Carlson, T. (2007). An Overview of the “Triangle Method” for Estimating Surface
803 Evapotranspiration and Soil Moisture from Satellite Imagery. *Sensors*, 7(8), 1612–1629.
804 <https://doi.org/10.3390/s7081612>
805 Carlson, T., Gillies, R., & Perry, E. (1994). A method to make use of thermal infrared temperature
806 and NDVI measurements to infer surface soil water content and fractional vegetation cover.
807 *Remote Sensing Reviews*, 9(1–2), 161–173. <https://doi.org/10.1080/02757259409532220>
808 Childs, N. (2016). *Rice Outlook: October 14, 2016*. Retrieved from
809 <http://usda.mannlib.cornell.edu/usda/ers/RCS//2010s/2016/RCS-10-14-2016.pdf>
810 Childs, N., & Skorbiansky, S. R. (2017). *Rice Outlook: July 14, 2017*. Retrieved from
811 <http://usda.mannlib.cornell.edu/usda/ers/RCS//2010s/2017/RCS-07-14-2017.pdf>
812 Childs, N., & Skorbiansky, S. R. (2018). *Rice Outlook: July 16, 2018*. Retrieved from
813 <http://usda.mannlib.cornell.edu/usda/ers/RCS//2010s/2018/RCS-07-16-2018.pdf>
814 Drusch, M., Del Bello, U., Carlier, S., Colin, O., Fernandez, V., Gascon, F., et al. (2012). Sentinel-
815 2: ESA’s Optical High-Resolution Mission for GMES Operational Services. *Remote Sensing*
816 *of Environment*, 120, 25–36. <https://doi.org/10.1016/J.RSE.2011.11.026>
817 Fisher, J. B., Melton, F., Middleton, E., Hain, C., Anderson, M., Allen, R., et al. (2017). The future
818 of evapotranspiration: Global requirements for ecosystem functioning, carbon and climate
819 feedbacks, agricultural management, and water resources. *Water Resources Research*, 53(4),
820 2618–2626. [https://doi.org/10.1002/2016WR020175@10.1002/\(ISSN\)1944-9208.COMHES1](https://doi.org/10.1002/2016WR020175@10.1002/(ISSN)1944-9208.COMHES1)
821 Geisseler, D., & Horwath, W. R. (2013). *Rice Production in California*. Davis. Retrieved from
822 http://apps.cdffa.ca.gov/frep/docs/Rice_Production_CA.pdf
823 Global Rice Science Partnership. (2013). *Rice Almanac, 4th Edition: Source Book for One of the*
824 *Most Important Economic Activities on Earth*. Los Banos, Philippines. Retrieved from
825 www.ricepedia.org
826 Khush, G. (2003). Productivity Improvements in Rice. *Nutrition Reviews*, 61(suppl_6), S114–S116.
827 <https://doi.org/10.1301/nr.2003.jun.S114-S116>
828 Linquist, B. (2018). Planting Progress for Rice, 2018. Retrieved from
829 <http://ucanr.edu/blogs/blogcore/postdetail.cfm?postnum=27403>
830 Linquist, B., Snyder, R., Anderson, F., Espino, L., Inglese, G., Marras, S., et al. (2015). Water
831 balances and evapotranspiration in water- and dry-seeded rice systems. *Irrigation Science*,
832 33(5), 375–385. <https://doi.org/10.1007/s00271-015-0474-4>
833 Muthayya, S., Sugimoto, J. D., Montgomery, S., & Maberly, G. F. (2014). An overview of global
834 rice production, supply, trade, and consumption. *Annals of the New York Academy of Sciences*,
835 1324(1), 7–14. <https://doi.org/10.1111/nyas.12540>
836 NASS. (2017). *2017 Acreage Report*. Retrieved from
837 <http://usda.mannlib.cornell.edu/usda/nass/Acre//2010s/2017/Acre-06-30-2017.pdf>
838 Nelson, A., Setiyono, T., Rala, A., Quicho, E., Raviz, J., Abonete, P., et al. (2014). Towards an

- 839 Operational SAR-Based Rice Monitoring System in Asia: Examples from 13 Demonstration
840 Sites across Asia in the RIICE Project. *Remote Sensing*, 6(11), 10773–10812.
841 <https://doi.org/10.3390/rs61110773>
- 842 Small, C. (2012). Spatiotemporal dimensionality and Time-Space characterization of multitemporal
843 imagery. *Remote Sensing of Environment*, 124, 793–809.
- 844 Sousa, D., & Small, C. (2016). Spatial structure and scaling of agricultural networks. *Remote*
845 *Sensing of Environment*, 184. <https://doi.org/10.1016/j.rse.2016.07.038>
- 846 Sousa, D., & Small, C. (2017). Global cross-calibration of Landsat spectral mixture models. *Remote*
847 *Sensing of Environment*, 192. <https://doi.org/10.1016/j.rse.2017.01.033>
- 848 Sousa, D., & Small, C. (2018). Multisensor analysis of spectral dimensionality and soil diversity in
849 the great central valley of California. *Sensors (Switzerland)*, 18(2).
850 <https://doi.org/10.3390/s18020583>
- 851 Torbick, N., Salas, W. A., Hagen, S., & Xiangming Xiao. (2011). Monitoring Rice Agriculture in
852 the Sacramento Valley, USA With Multitemporal PALSAR and MODIS Imagery. *IEEE*
853 *Journal of Selected Topics in Applied Earth Observations and Remote Sensing*, 4(2), 451–457.
854 <https://doi.org/10.1109/JSTARS.2010.2091493>
- 855 USGS. (2016). *Landsat 8 Data Users Handbook, Version 2.0*. Sioux Falls, SD. Retrieved from
856 [https://landsat.usgs.gov/sites/default/files/documents/LSDS-](https://landsat.usgs.gov/sites/default/files/documents/LSDS-1574_L8_Data_Users_Handbook.pdf)
857 [1574_L8_Data_Users_Handbook.pdf](https://landsat.usgs.gov/sites/default/files/documents/LSDS-1574_L8_Data_Users_Handbook.pdf)
- 858 Zhan, W., Chen, Y., Zhou, J., Wang, J., Liu, W., Voogt, J., et al. (2013). Disaggregation of
859 remotely sensed land surface temperature: Literature survey, taxonomy, issues, and caveats.
860 *Remote Sensing of Environment*, 131, 119–139. <https://doi.org/10.1016/J.RSE.2012.12.014>
861