

# ***The role of glacier retreat for Swiss hydropower production***

(running title: Glacier retreat and Swiss hydropower)

Bettina Schaefli<sup>1,2</sup>, Pedro Manso<sup>2</sup>, Mauro Fischer<sup>3,4</sup>, Matthias Huss<sup>3,5</sup> Daniel Farinotti<sup>5,6</sup>

1: Institute of Earth Surface Dynamics, University of Lausanne, Switzerland

2: Laboratory of Hydraulic Constructions, School of Architecture, Civil and Environmental Engineering (ENAC), Ecole Polytechnique Fédérale de Lausanne (EPFL), Switzerland

3: Department of Geosciences, University of Fribourg, Switzerland

4: Department of Geography, University of Zürich, Switzerland

5: Laboratory of Hydraulics, Hydrology and Glaciology, ETH Zurich, Switzerland

6: Swiss Federal Institute for Forest, Snow and Landscape Research (WSL), Birmensdorf, Switzerland

Corresponding author: Bettina Schaefli, [bettina.schaefli@unil.ch](mailto:bettina.schaefli@unil.ch)

UNIL, FGSE-IDYST

Bâtiment Géopolis

1015 Lausanne

Switzerland

## Abstract

High elevation or high latitude hydropower production (HP) strongly relies on water resources that are influenced by glacier melt and are thus highly sensitive to climate warming. Despite of the wide-spread glacier retreat since the development of HP infrastructure in the 20<sup>th</sup> century, little quantitative information is available about the role of glacier mass loss for HP. In this paper, we provide the first regional quantification for the share of Alpine hydropower production that directly relies on the waters released by glacier mass loss, i.e. on the depletion of long-term ice storage that cannot be replenished by precipitation in the coming decades. Based on the case of Switzerland (which produces over 50% of its electricity from hydropower), we show that since 1980, 3.0% to 4.0% (1.0 to 1.4 TWh yr<sup>-1</sup>) of the country-scale hydropower production was directly provided by the net glacier mass loss and that this share is likely to reduce substantially by 2040-2060. For the period 2070-2090, a production reduction of about 1.0 TWh yr<sup>-1</sup> is anticipated. The highlighted strong regional differences, both in terms of HP share from glacier mass loss and in terms of timing of production decline, emphasize the need for similar analyses in other Alpine or high latitude regions.

Key words: hydrology, glacier mass balance, hydropower, climate change, Alps

## 1 Introduction

Hydropower provides around 16% of the world's total electricity [1]. In the European Union, hydropower represented 11% of the gross electricity consumption of the 28 member states in 2016 [2] and high shares of hydropower production (HP) can in particular be found in high latitude and high elevation regions [3], where part of HP relies on water resources that are temporarily stored in the form of snow and ice, and are thus particularly vulnerable to climate warming [4].

Despite the well-known inherent variability of water resources availability, fundamental energy market models [5] but also large-scale hydropower assessments usually only account for selected baseline water years [6]. The notable exception are recent continental to global scale studies of HP potential [1] or of climate change impact on HP [7, 8]. While giving the broader picture at continental scales, these studies cannot yet adequately resolve the natural variability of water resources at the HP catchment scale or in mountainous regions in general [9]. Accordingly, the impact of climate warming on HP in snow- and glacier influenced regions still essentially relies on individual case studies [namely from the Alps and US, see, 9], with some regional analyses of the effect of climate warming on snow- and glacier influenced HP available for the US [10, 11]. Glacier retreat has in this context long been recognized as potential threat to HP around the world [12-14]. Studies quantifying the actual impact of glacier mass loss on HP are, however, extremely rare. Existing impact studies in the Alpine region focus on the quantification of water resources regime changes [15, 16] rather than on quantifying the impact of actual glacier mass loss on hydropower production, as for example in the work of Vergara et al. [17] for the tropical Andes. They showed that glacier retreat might reduce HP for the Cañon del Pato HP plant on the Rio Santa by 570 GWh yr<sup>-1</sup> if the glacier contribution disappears.

This paper provides, to our knowledge, the first quantification of how HP in an Alpine country, Switzerland, depends on annual glacier mass loss, in the past as well as in the future. The relevance of this study is twofold: i) Swiss HP helps balancing the regional electricity exchanges between France, Germany, Italy and Austria (voltage regulation), guarantees power and frequency modulation (primary, secondary and tertiary controls) and allows for black-start of the regional grid [18]; ii) Swiss HP can be seen as a reference case for all other Alpine HP regions in Austria, Italy and France namely. The methodology used in this paper is also transferable to northern countries with glacier-influenced HP.

Hydropower represents around 55% of the Swiss electricity production, which in 2015 was 61.6 TWh [19]. All large Swiss rivers and many smaller rivers used for HP are influenced by meltwater from seasonal snow cover and glaciers. To understand the role of glacier retreat for HP, the key variable is the amount of water that originated from annual glacier mass loss. This number is usually unknown but can be estimated based on observations of the key water balance components, i.e. precipitation and streamflow (Section 3). The recent work of Fischer et al. [20] – who estimated annual mass changes for all glaciers in Switzerland during 1980-2010 – represents a unique opportunity to obtain insights into the role of glaciers for the Swiss water resources.

In this paper, we combine the above estimates with Swiss-wide data for water resources [21], glacier runoff simulations [22] and the spatial database on Swiss hydropower plants developed by Balmer [23] to quantify the role of glaciers for HP in Switzerland. By doing so, we provide the first quantitative assessment for the share of HP that can be attributed to

annual glacier mass loss and how this share might evolve in the future owing to changes in water availability from glacier melt. The remainder is organized as follows: we first give an overview over the Swiss HP system (Section 2) and the used data sets (Section 3), before presenting the methods to quantify HP from glacier water resources (Section 4) and the obtained results (Section 5). A detailed discussion of the results (Section 6) and conclusions (Section 7) complete this document.

## **2 Swiss water resources and HP**

The average available water for Switzerland (total water volume divided by area) over the 20<sup>th</sup> century was around 1300 mm yr<sup>-1</sup> [24]. Recent estimates of glacier mass change for all Swiss glaciers indicate a net change between 1980 and 2010 of -620 mm yr<sup>-1</sup> (relative to the glacier area in 2010, i.e. 944 km<sup>2</sup>) [20]. This corresponds to -14 mm yr<sup>-1</sup> when averaged over the area of Switzerland. This negative glacier mass change represents a water input for hydropower production that does not originate from this year's rainfall but from water accumulated decades to centuries ago.

### **2.1 Hydrological regimes**

The temporal distribution of streamflow, or the streamflow regime, is key to understand the interplay of glacier melt water and HP. The streamflow regimes of Switzerland (Figure 1) are of two fundamentally different types [25, 26]: (i) snow- or glacier-dominated regimes that show a pronounced low flow during winter (due to the freezing conditions) and much higher flows during the melt months (April-August), and (ii) rainfall-dominated regimes, where streamflow follows the seasonality of rainfall and of evapotranspiration (resulting in typical summer low flows). An overview of the spatial distribution of streamflow amounts is given in the Supplementary Material (Figure S1).

With anticipated atmospheric warming over the coming decades, major changes in the streamflow regime of snow- and glacier-fed drainage basins are expected [4]. As glaciers retreat, they release water from long-term storage, contributing thereby to a transient increase in annual streamflow for a few decades [27]. The timing of maximum glacier melt volumes depends on the characteristics (elevation range, ice volume) of the catchment and the rate of climate change [28]. In mountainous catchments, significant shifts in the hydrological regime are expected with increasing streamflow in spring and early summer and declining streamflow in July and August [29-31]. These changes result from an earlier onset of the snow melting season and from shrinking glacier areas.

### **2.2 Swiss hydropower infrastructure**

The Swiss HP infrastructure in the year 2016 was composed of 662 powerhouses [32] and 195 large dams that are under the direct supervision of the Swiss federal government [33]. The average annual HP was 35.7 TWh yr<sup>-1</sup> for the period 1980-2016 (Table 1). The spatial distribution of the HP schemes is conditioned by the discussed specificities of the Swiss hydrological regimes (Figure 2): the southern and central mountain regions host most of the

storage HP schemes; the large run-of-the-river (RoR) schemes are located on the lowland rivers.

The Swiss HP infrastructure can be divided into three main groups [34] (Figure 2). *Group 1* includes **large storage schemes** that shift large amounts of meltwater inflows from summer to winter to buffer winter droughts. The group mostly consists of high-head (>100 m) storage schemes with one or several reservoirs (e.g. the well-known Grande Dixence with its storage reservoir of  $401 \cdot 10^6 \text{m}^3$ ). These reservoirs have typically natural catchment areas of between 50 and 150 km<sup>2</sup> and waterways draining water from additional, distant catchments. Most group 1 schemes show periods in which their reservoir is full and during which they are operated as run-of-the-river schemes.

*Group 2* includes **low-head** (a few tens of meters) **RoR schemes with large catchments** (>2500 km<sup>2</sup>) with a typical installed capacity between 5 MW and 100 MW, built on large lowland rivers close to urban and industrial areas. The hydrologic regime of these rivers is strongly influenced by artificial or natural lakes and water management upstream.

*Group 3* includes both low-head and high-head **RoR schemes with catchments < 2500 km<sup>2</sup>**. Contrary to low-head schemes, **high-head RoR schemes** (with heads from 100 to 1100 m) by-pass a given river-reach and usually have installed capacity below 30 MW. Schemes of group 2 and 3 usually have marginal storage capacity.

A special case are pumped-storage HP schemes that operate between one or two in-stream reservoirs (semi-open or open-loop pumped-storage). The number of such schemes might increase in the near future as a means for grid regulation [35]. They are not discussed separately here. It is noteworthy that both Group 1 and 3 include schemes that transfer water across the natural borders of the major European rivers (e.g. the Gries HP scheme from the Rhone to the Po basin, the Hongrin scheme from Rhine to Rhone or the Totensee scheme from Rhone to Rhine).

### 2.3 Climate change impact projections on HP

Numerous studies quantified the effect of climate change on Swiss HP with a so-called climate change impact modeling chain [9]. These studies have a strong focus on high Alpine HP [28, 30, 36, 37]. Only few studies exist on HP in lowland rivers [for an example, see, 26, 38]. While the earliest studies [16, 29] made very rough assumptions about the evolution of glacierized surfaces, recent work highlighted the importance of more detailed parameterizations of glacier surface evolution [39] and of reliable estimates of initial ice volumes [40].

The latest comprehensive analysis of climate change impact on Swiss HP was elaborated in the context of two research projects, CCHydro funded by the Swiss Federal Office for the Environment [41] and CCWasserkraft [42] funded by Swisselectric research and the Federal Office for Energy. In agreement with all previous results, these analyses of 50 representative Swiss catchments for the periods 2021-2050 and 2070-2099 concluded that the ongoing warming in the Alps will significantly decrease both the snow cover duration at all altitudes and the maximum annual snow accumulation at high elevations. As a result, Swiss glaciers will strongly reduce in surface by 2100. The combined effect of a reduced snowfall-to-rainfall

ratio and of warmer spring temperatures will shift the annual maximum monthly streamflow of snow-dominated rivers to earlier periods in the year (up to several weeks). At the same time the snowmelt induced high flows might be more concentrated in time. The concomitant glacier melt will result in a temporary increase of annual streamflow but ultimately lead to reduced annual flows in glacier-influenced catchments, with reduced flows in late summer [43].

In general, late summer streamflow will be reduced in all snow-influenced catchments due to the earlier melting season. For non-glacierized catchments, the annual flow might slightly decrease by 2100 due to a warming-related increase of evapotranspiration and a potential (small) decrease of precipitation. For a comprehensive overview of projected changes, see the work of Speich et al. [44].

The amplitude of changes remains, however, highly uncertain due to uncertainties in both modelling and initial ice volume [45]. An assessment of the volumes of all Swiss glaciers with ground-penetrating radar [46] is ongoing in the context of research for the Swiss energy transition [47].

### **3 Data sets**

The detailed analysis of the role of glaciers for HP is based on five data sets: (i) a GIS database of the Swiss HP infrastructure [HYDROGIS, 23], (ii) the Swiss hydropower production statistics [48], (iii) monthly natural streamflows of the Swiss river network [49], (iv) estimated glacier mass changes between 1980 and 2010 [20], and (v) simulated past and future glacier runoff for all individual Swiss glaciers [22].

#### **3.1 Hydropower infrastructure: HYDROGIS**

The GIS data base developed by Balmer [23] includes 401 powerhouses corresponding to a total installed power of 14.5 GW out of the total of 15.0 GW installed in 2005. In 2016, the total installed power was 16.2 GW.. During the same time, the total expected production increased from 38.7 GWh to 39.9 GWh [48].

In HYDROGIS, the powerhouses are characterized by their production type (RoR, storage or pump-storage) and for most of them, the installed power and the turbine design discharge are known. Information on the feeding catchments is, however, not available at the powerhouse level since the 401 powerhouses are grouped into 284 HP schemes, which is the reference level for HP catchment information. The database includes furthermore 214 HP reservoirs, 119 dams and 787 water intakes.

For the present analysis, the most important added value of HYDROGIS is the connection between HP schemes and catchments, which was compiled by Balmer [23] via a detailed analysis of adduction tunnels and of company reports of all schemes. Detailed checks showed that the database is reliable in terms of connections between catchments and HP schemes, which is the basis for the water resources analysis herein.

### **3.2 Hydropower production statistics**

Hydropower production statistics are available from the yearly electricity statistics of Switzerland [19] aggregated to six large regions: (i) Ticino, (ii) Grisons, (iii) Valais, (iv) Northern Alps, (v) Jura, (vi) Plateau (for the correspondence of these regions to main Swiss river catchments see Table S1). Besides actual annual production, the statistics contain annual production potentials, which have to be reported by HP companies for water tax purposes. The production potential is used here as an estimate of the total annual amount of water that was available for production in the catchments (whether used or not).

### **3.3 Natural streamflow of Swiss rivers**

The Swiss Federal Office for the Environment (FOEN) [50] provides a Swiss-wide raster data set (500 m x 500 m) with simulated monthly natural streamflows. This data has been shown to give relatively unbiased estimates of the monthly flows if aggregated to areas between 10 km<sup>2</sup> – 1000 km<sup>2</sup> (beyond this scale, large lakes might bias the results) [21]. We use here the latest version of the data, made available by Zappa et al. [49]. It covers the period 1981-2000, which thus serves as reference period for all presented analyses.

### **3.4 Mass changes of Swiss glaciers**

Geodetic mass changes between 1980 and 2010 are available for all glacier-covered HP catchments from Fischer et al. (2015). Corresponding glacier outlines are taken from the Swiss Glacier Inventory SGI2010[51].

Between 1980 and 2010, the estimated average geodetic mass balance for the entire Swiss Alps was -620 mm water equivalent (w.e.) yr<sup>-1</sup>, with remarkable regional differences (Table 4).

### **3.5 Glacier runoff**

For each individual glacier, past and future glacier mass balance, surface geometry change and retreat, and monthly runoff is available from the Global Glacier Evolution Model (GloGEM, Huss and Hock, 2015). The model has been forced with ERA-interim climate re-analysis data [52] for the past and with 14 Global Circulation Models and three different CO<sub>2</sub>-emission pathways [53] until 2100. For the purpose of the present paper, we define glacier runoff as all water exiting the glacier during one month (for details, see the Supplementary Material).

The future glacier runoff simulations from GloGEM show the expected decrease of glacier runoff in the period 2040-2060 for catchments with low glacier coverage. For the period 2070 – 2090, the simulations show a consistent decrease of glacier runoff for all HP catchments [Figure S2 and 43].

## **4 Methods**

We give hereafter details on how HP is estimated at different scales based on discharge data for different time periods, followed by details on the assessment of past and future HP from

annual glacier mass loss and of expected HP changes resulting from hydrologic regime modifications.

#### 4.1 Estimation of HP production at the scheme scale

The HP data available at the powerhouse level includes the expected annual electricity production for average years (based on past operation),  $E_h^*$  [Wh yr<sup>-1</sup>], the total available power,  $P_h^*$  [W], and the total design discharge through the turbines,  $Q_h^*$  [m<sup>3</sup> s<sup>-1</sup>], where  $h$  designates the (power)house level. A first order estimate of the number of powerhouse operating hours,  $\tau_h^*$  [h yr<sup>-1</sup>], can thus be obtained as:

$$\tau_h^* = \frac{E_h^*}{P_h^*}. \quad (1)$$

The asterisk (\*) is used to identify design variables and not actual time-varying quantities. Note that the estimate neglects the percentage of time that only part of the powerhouse capacity is used (i.e. not all turbines in use or at partial load).

Based on  $\tau_h^*$ , we estimate a first lumped water-to-electricity conversion factor, called electricity coefficient,  $\gamma_h^*$  [kWh m<sup>-3</sup>] as follows:

$$\gamma_h^* = \frac{E_h^*}{Q_h^* \tau_h^* 3600 \cdot 10^3} = \frac{P_h^*}{Q_h^* 3600 \cdot 10^3}. \quad (2)$$

The electricity coefficients obtained at the scale of the powerhouses,  $\gamma_h^*$ , can be summed up to the scale of the HP schemes:

$$\gamma_j^* = \sum_{\forall h \in j} \gamma_h^*, \quad (3)$$

where  $\gamma_j^*$  is the electricity coefficient of scheme  $j$ .

This electricity coefficient  $\gamma_j^*$  relates indirectly the average annual streamflow available from the catchment  $Q_j$  [m<sup>3</sup> s<sup>-1</sup>] to the corresponding electricity production at the scheme level, based on the past average electricity production. However, not all powerhouses within a catchment use the water of the entire catchment and the catchments corresponding to each powerhouse are unknown. We thus assume that the design discharge for each powerhouse,  $Q_h^*$ , multiplied by the expected operation hours,  $\tau_h^*$ , is representative of the amount of annual water that feeds this powerhouse. This assumption is adequate for storage plants, which mostly operate in design conditions. For RoR schemes this assumption leads to underestimating the operation hours and overestimating the electricity coefficient.

Accordingly, we propose to use the following weighted scheme-scale electricity coefficient  $\widehat{\gamma}_j$ :



$$\widehat{\gamma}_j = \frac{\sum_{\forall h \in j} E_h^*}{3600 \sum_{\forall h \in j} Q_h^* \tau_h^*} = \frac{\sum_{\forall h \in j} \gamma_h^* Q_h^* \tau_h^*}{\sum_{\forall h \in j} Q_h^* \tau_h^*}, \quad (4)$$

Actual discharge time series for different time periods are available at the catchment-scale only. An estimate of the discharge  $Q_{hi}$  feeding each powerhouse  $h$  over time period  $i$  is obtained as:

$$Q_{hi} = Q_{ij} \frac{Q_h^*}{\sum_{\forall h \in j} Q_h^*}, \quad (5)$$

where  $Q_{ij}$  [ $\text{m}^3 \text{s}^{-1}$ ] is the average annual discharge available for the scheme catchment  $j$  during time period  $i$ .

The weighted scheme-scale electricity coefficient is the key to estimate HP from annual glacier mass loss for past and future time periods at the scheme-scale.

#### 4.2 Estimation of HP production at the regional scale

The electricity statistics also report production statistics for six regions of Switzerland. To obtain a regional-scale electricity coefficient  $\widehat{\gamma}_r$  [ $\text{kWh m}^{-3}$ ] for region  $r$ , the scheme-scale electricity coefficients are weighted according to their expected total production (a flow-time scaling is not possible since the concept of operating hours does not make sense at the scheme scale):

$$\widehat{\gamma}_r = \frac{\sum_{\forall j \in r} \widehat{\gamma}_j E_j^*}{\sum_{\forall j \in r} E_j^*}. \quad (6)$$

Where  $E_j^* = \sum_{\forall h \in j} E_h^*$  is the expected production at the scheme level. This regional-scale electricity coefficient expresses how much hydropower is produced from a  $\text{m}^3$  of water flow that is originating in that region.

#### 4.3 Estimation of HP production at the HP network scale

Changing the perspective from the hydropower producing catchment to a hydropower producing river reach, we can estimate a weighted electricity coefficient  $\widehat{\gamma}_x$  at a given location  $x$ :

$$\widehat{\gamma}_x = \frac{\sum_{\forall h \text{ upstream } x} E_h^*}{3600 \sum_{\forall h \text{ upstream } x} Q_h^* \tau_h^*} = \frac{\sum_{\forall h \text{ upstream } x} \gamma_h^* Q_h^* \tau_h^*}{\sum_{\forall h \text{ upstream } x} Q_h^* \tau_h^*}. \quad (7)$$

While  $\widehat{\gamma}_j$  expresses how much hydropower is produced from a  $\text{m}^3$  of water flow generated in a catchment, this point-scale electricity coefficient,  $\widehat{\gamma}_x$ , expresses how much electricity is generated per  $\text{m}^3$  of water that transits a given location  $x$  in a river.

The total hydropower production of the entire HP network upstream of location  $x$  for period  $i$  is then obtained as:

$$E_{ix} = 3600 \cdot 10^3 \sum_{\forall h \text{ upstream } x} \gamma_h^* Q_{ih} \tau_h^* . \quad (8)$$

#### 4.4 Analysis of past and future water resources availability from annual glacier mass loss

Based on the observed data of Fischer et al. [20, 51], we propose to estimate the share of water resources that results from glacier mass depletion,  $\rho_{ij}$ , at the scale of all HP scheme catchments as follows:

$$\rho_{ij} = \frac{m_{ij}}{q_{ij}} , \quad (9)$$

where  $m_{ij}$  [ $\text{mm yr}^{-1}$ ] is the average annual glacier mass loss in catchment  $j$  over period  $i$ , and  $q_{ij}$  [ $\text{mm yr}^{-1}$ ] is the specific discharge of catchment  $j$  (discharge in  $\text{m}^3 \text{s}^{-1}$  divided by the catchment area). Given the assumed linear relationship between annual HP,  $E_{ij}$ , and available discharge (Equation 7),  $\rho_{ij}$  gives a direct estimate of the share of annual HP that results from glacier mass depletion.

Discharge and ice melt data are available for the following periods:  $T_{\text{ref}}=1981 - 2000$ ,  $T_1=2040-2060$  and  $T_2=2070-2090$ . In addition, some results are reported for the time period 1980-2010, which is the original reference period for the mass balance data published by Fischer et al. [20].

#### 4.5 Future regime impacts on HP

Climate change induced modifications of glacier runoff affect the water availability in terms of quantity and temporal occurrence (an example of future simulated glacier runoff is given in Figure 3). We quantify the effect of regime modifications on HP in terms of the absolute difference of the runoff volume from the glacier-covered area between two time periods for each month  $m$ :

$$V_{ij}^g(m) = \left| Q_{ij}^g(m) - Q_{\text{ref},j}^g(m) \right| \Delta_m , \quad (10)$$

where  $V_{ij}^g(m)$  [ $\text{m}^3$ ] is the glacier ( $g$ ) runoff volume difference for month  $m$ , time period  $i$  and catchment  $j$ ,  $Q_{ij}^g(m)$  [ $\text{m}^3 \text{s}^{-1}$ ] is the monthly simulated glacier runoff of time period  $i$ , and  $Q_{\text{ref},j}^g(m)$  [ $\text{m}^3 \text{s}^{-1}$ ] is the monthly glacier runoff for the reference period.  $\Delta_m$  [s] is the duration of the month. The reference area for  $V_{ij}^g$ ,  $Q_{ij}^g$ , and  $Q_{\text{ref},j}^g$  is the glacier-covered area during the

reference period. For future periods, in which glaciers have retreated, this area will notably include ice-free surfaces as well.

A glacier runoff change indicator  $\delta_{ij}$  is obtained by (i) normalizing  $V_{ij}^g(m)$  to the total catchment discharge  $Q_{\text{ref},j}(m)$  for the reference period and (ii) averaging over all months (see Figure S3 for an illustration):

$$\delta_{ij} = \sum_{m=1}^{12} \frac{V_{ij}^g(m)}{Q_{\text{ref},j}(m)\Delta_m}. \quad (11)$$

$\delta_{ij}$  is the relative amount of water that, for period  $i$ , is available during a different period of the year than it was for the reference period. Assuming again a linear relationship between annual HP and available discharge,  $\delta_{ij}$  can also be directly interpreted in terms of HP: it gives the relative amount of annual HP that, in the future, will be available during a different period of the year.

## 5 Results

### 5.1 Swiss HP overview

The Swiss HP schemes use the water of an area of 39,740 km<sup>2</sup>, corresponding to 93% of the Swiss territory and including all Swiss glaciers. The large percentage is due to the run-of-river (RoR) HP schemes in series on all large rivers leaving Switzerland (Figure 2 and Table S2). The cumulative sum of all HP scheme catchments amounts to 528,278 km<sup>2</sup> or roughly 13 times the total catchment area (Table 2), which emphasizes the degree of nesting of the HP catchments, in particular in low-lying areas (Plateau region, North of the Alpes region).

On average, the water from the 134 headwater catchments is used in 12 HP stages, with 12 headwater catchments that are not part of a larger HP network. The water from some Alpine headwater catchments is used in up to 30 HP stages down to the Rhine in Basel.

### 5.2 Natural variability of Swiss HP resources

Measured in terms of production potential, the six major HP regions (Table 2) show important differences in interannual variability of available water (Figure 4a), with coefficients of variations (standard deviation divided by the mean) ranging from 0.06 to 0.16. The interannual variability of precipitation (Figure 4b), in contrast, is rather similar across all regions, with a coefficient of variation between 0.10 and 0.11.

The lowest variability of the production potential is obtained for the region with the highest glacierization (Valais, Figure 4c) and for the Plateau region (Figure 4e). For the Valais, as for other areas with a high glacierization, the glaciers act as a strong buffer of interannual variability. This notably results in a relatively stable interannual operation of high elevation HP reservoirs across Switzerland [see 26, including an illustration of Swiss reservoir filling curves].

The low variability of the production potential of the Plateau region can be explained by the large number of RoR power plants with large catchments, for which the spatial precipitation variability averages out. At the Swiss scale, the low variability of the production potential results from an averaging effect across regions.

### 5.3 Electricity coefficients from the scheme scale to the regional scale

Swiss HP infrastructure shows high electricity coefficients, with an average electricity coefficient of the analyzed powerhouses of  $0.63 \text{ kWh m}^{-3}$  and an average scheme scale electricity coefficient of  $0.59 \text{ kWh m}^{-3}$  (Table 3). For individual schemes, the values range from  $0.004 \text{ kWh m}^{-3}$  for lowland RoR schemes to up to  $3.84 \text{ kWh m}^{-3}$  for the single-stage high-head Cleuson- Dixence HP scheme (Figure 5 and Figure 6).

The overall high scheme-scale electricity coefficients are explained by the high electricity coefficients of headwater catchments, with an average of  $0.95 \text{ kWh m}^{-3}$  (Figure 5a). Three of these headwater schemes have both a particularly high head with their powerhouses located at low elevation in the Rhone valley bottom and high elevation catchments, resulting in electricity coefficients above  $3 \text{ kWh m}^{-3}$  (Figure 5a).

At the level of the electricity statistics regions, a generally strong elevation trend of electricity coefficients becomes visible (Figure 5b). The trend is of  $1.00 \text{ kWh m}^{-3}$  per 1000 m of increase of the mean catchment elevation. This Swiss-wide trend can be converted into a rough estimate of the electricity coefficient of HP from glacier melt water: given the mean elevation of the Swiss glaciers by 2010, 3042 m asl), the general elevation trend of regional electricity coefficients (Figure 5b) yields an electricity coefficient of  $1.00 \cdot 10^{-3} \text{ kWh m}^{-3} \text{ m}^{-1} \times 3042 \text{ m} - 0.940 \text{ kWh m}^{-3} = 2.11 \text{ kWh m}^{-3}$  (see Section 5.5 for further details).

### 5.4 Electricity coefficients at the HP network scale

The effect of having sequences of HP schemes along rivers can be illustrated based on the two largest HP networks, the one along the Rhine river and along the Rhone river (Figure 2). The Rhine HP network has a weighted electricity coefficient of  $0.04 \text{ kWh m}^{-3}$ , which is twice as high as the electricity coefficient of the hydropower plant operating on the Rhine at its Swiss outlet (Birsfelden), which equals  $\gamma_h = 0.02 \text{ kWh m}^{-3}$  (Table 3). For the Rhone catchment, including many high-head hydropower plants and with water being used in up to 9 stages, the weighted electricity coefficient of the entire HP network equals  $0.27 \text{ kWh m}^{-3}$ , which is more than 10 times the electricity coefficient of the powerhouse on the Rhone at its Swiss outlet (at Chancy-Pougny,  $0.02 \text{ kWh m}^{-3}$ ).

### 5.5 Estimation of HP production from annual glacier mass loss

The high elevation HP schemes receive a significant amount of water input from annual glacier mass change, up to  $500 \text{ mm yr}^{-1}$  (relative to the scheme catchment area) for 1981-2000, or more than 25 % of the total annual catchment discharge (Figure 7).

On a Swiss-wide area-average, the glaciers' net contribution was of  $479 \text{ mm w.e. yr}^{-1}$  for 1981-2000 (Table 4). During this period, the average Swiss glacier cover was  $1111 \text{ km}^2$  (assuming a linear retreat of the glacier area between 1973 and 2010) [20]. A first rough estimate of the HP originating from annual glacier mass loss can be obtained with the regional

electricity coefficient extrapolated to the mean glacier elevation. The corresponding production over 1981-2000 equals thus  $0.479 \text{ m yr}^{-1} \times 1111 \cdot 10^6 \text{ m}^2 \times 2.11 \text{ kWh m}^{-3} = 1123 \text{ GWh yr}^{-1}$ , or 3.2 % of the Swiss-wide annual production over the same period, which was  $34,738 \text{ GWh yr}^{-1}$  [48]. For the period 1980 – 2010, which had a stronger annual glacier mass loss (Table 4), this ratio equals 4.0 % (Table 5).

This estimation of HP ratios from glacier mass loss relies on two numbers: the average annual glacier mass loss and the electricity coefficient estimated from design data (expected annual production, production time and turbine flow). The annual glacier mass loss has an uncertainty of  $\pm 0.07 \text{ m yr}^{-1}$  [20]. For the interpolated area of individual glaciers between observation dates, an error of  $\pm 5\%$  can be assumed as a conservative estimate. The 95% confidence interval of the electricity coefficient interpolated at the Swiss-scale for glaciers (from linear regression analysis) is  $2.11 \pm 0.68 \text{ kWh m}^{-3}$ . Inserting these uncertainties into the above regional estimate of HP from glacier-covered areas results in estimated HP from annual glacier mass loss of between 1.8% and 5.2% for the period 1980 to 2000 and 2.3% to 6.2% for the period 1981 to 2010.

HP calculations based on scheme-scale melt ratios (Figure 8a) gives very similar estimates: the production ratio  $\rho_{ij}$  averaged over all glacier schemes, weighted by the expected scheme production, equals 3.2% for the period 1981-2000 and 4.0 % for 1980-2010 (Table 5). These Swiss-wide averages of HP production ratios from glacier mass loss hide significant regional differences, with estimates for the past periods ranging from between 6.4 and 7.8 % for the Rhone river to between 1.8% and 2.2% for the Rhine river (Table 5).

For the future, the GloGEM simulations predict that 55% and 79% of the 2010 glacier volume will be lost by 2040-2060 and 2070-2090, respectively (Table S3). The strong reduction from 2010 to 2040-2060 is coherent with the observed loss of 37% ( $22.5 \text{ km}^3$ ) over the period 1980-2010 (the estimated glacier volume for 2010 was of  $59.9 \text{ km}^3$ ; [20]. The corresponding simulated annual glacier mass loss rates at the scheme-scale result in an average  $\rho_{ij}$  of 2.5% for 2040-2060 (Figure 8c) and of 1.2% for 2070-2090 (average over glacier schemes, (Table 5).

The maps of  $\rho_{ij}$  (Figure 8c,d) reveal that, in the past, annual glacier mass loss was an important source of water for HP at larger scales and not only in the headwater catchments. Given the strong glacier retreat, the input from annual glacier mass loss is, however, significantly reduced in future simulations . For the Rhine river, input from annual glacier mass loss is likely to become insignificant in the future (Table 5).

For the Rhone river catchment, the simulations suggest that the decrease in HP from annual glacier mass loss might only occur after the period 2040-2060. The contributions, however, will remain significant for this century, with 3.8% estimated for the period 2070-2090 (Table 5).

## 5.6 Impacts of glacier runoff regime changes

Future runoff from glacier catchments is, on average, expected to shift to earlier periods in the year, especially for catchments with important glacier volume loss. The simulated glacier runoff shifts, as summarized by the indicator  $\delta_{ij}$ , correspond mostly to less than 10% of the

scheme-scale discharges. This is true for both periods 2040-2060 and 2070-2090 (Figure 9). The notable exception are a few run-of-river schemes that are located at elevations higher than 1400 m asl.. Here, shifts go up to 35% for the period 2040-2060. Given the strong simulated glacier retreat up to then, the regimes shift only slightly beyond this period.

## 6 Discussion

The method proposed in this paper to analyze the impact of glacier retreat on HP brings together a number of data sets that have not been analyzed jointly so far. In particular, it combines recent model results on glacier mass evolution, estimates for glacier runoff and catchment-scale river discharge, as well as statistics and spatial information on hydropower infrastructure. The contribution of annual glacier mass change to HP is estimated in two different ways: either (a) by estimating and averaging ratios of annual glacier mass loss and total discharge for all HP scheme catchments, or (b) from an elevation-dependent electricity production factor and the mean glacier elevation. Whilst the first method relies on discharge estimates that are based on simulations and observations, the second only relies on observed glacier mass balance data and interpolated electricity coefficients.

Both methods give similar results for the share of HP resulting from the depletion of glacier mass, with Swiss-wide average estimates ranging from 3.1% to 4.0 % for the observation periods. The relevance of this result is twofold: i) In terms of transferability of the proposed method, the obtained results suggest that similar analyses could be completed in any region that has detailed glacier mass balance data and spatial information on electricity coefficients. ii) For Switzerland, the estimated ratios give a robust estimate of the amount of Swiss-wide HP that originated from annual glacier mass loss in the recent past. It has to be noted that these numbers are considerably higher than the simple average share (not weighted by production) of water originating from glacier mass depletion in the various scheme catchments. The latter, in fact, amounts to only between 1.3% and 1.7% (Table 4). This almost doubling effect between the average ratio of water availability from glacier mass depletion and the corresponding average ratio of HP is a direct consequence of using the glacier melt water several times along the HP network and of the high electricity coefficients associated with glacier water resources.

The simulations suggest that, on a Swiss-wide basis, HP might receive a significantly lower share of water from annual glacier mass loss already in the near future. Compared to 1981-2000, the future simulations predict a reduction of the HP ratios from 3.1% to 2.5% for the period 2040-2060 and to 1.2% for 2070-2090. This corresponds to a production reduction of around 0.56 TWh yr<sup>-1</sup> for 2040-2060 and of around 1.00 TWh yr<sup>-1</sup> for 2070-2090.

This share of HP from glacier mass depletion has to be put into relation to other changes expected for HP in the near future. HP is namely expected to decrease by 1.4 TWh yr<sup>-1</sup> due to the implementation of the Swiss water protection act during concession renewals [47, 54]. This is in contrast to the Swiss Energy Strategy 2050, that plans a net HP increase (beyond water protection effects) by at least 1.5 TWh yr<sup>-1</sup>. According to the same strategy, this should be obtained by building new small hydropower plants (+1.3 TWh yr<sup>-1</sup>) and from the extension

and adaptation of existing large plants ( $+0.9 \text{ TWh yr}^{-1}$ ) [34, 47], which is challenging given that all major Swiss river systems are already exploited [34].

The reduction of annual melt water might well be the dominant warming-induced impact for many schemes. The presented analysis shows, however, that for most schemes, the future temporal pattern of glacier melt water inflow will result in a redistribution of less than 10% of the total available water. In other terms, the annual HP pattern will not fundamentally change for those schemes. It must be noted, however, that this does not apply to RoR schemes that have catchments currently exhibiting an important degree of glacier coverage. Such schemes might in fact experience a profound modification of their water inflow regime already in the near future.

Given the individual character of HP schemes, a more detailed analysis of the temporal redistribution of melt water flows is challenging and would require a detailed analysis at the level of water intakes. Some water intakes might e.g. lose water during future melt periods if the melt water flow is more concentrated on shorter periods and thus exceeds the intake capacity (resulting in a potential increase of overspill duration and magnitude). This might in particular affect glacier-influenced storage HP schemes that usually have a high number of water intakes [e.g. the Grande Dixence scheme has 100 km of tunnels to route the water of 75 water intakes to its main reservoir, 55]. The Swiss-wide database on water intakes [which includes 1406 HPP intakes, 56, p. 22] is, however, known to be incomplete and contains essentially the intakes that are directly relevant for residual flows.

A third implication of climate warming for glacier-influenced HP is a potential modification of the year-to-year variability of available water. This modification is anticipated in many climate change impact studies in high Alpine environments [29]. With the average monthly flow data used in this study, no further assessment of this important aspect is possible. However, the analyses presented for the annual hydropower production potential (quantifying the production potential) and for the annual precipitation variability at a regional scale shows that there is no clear link between the today's amounts of glacier cover and the annual variability in the production potential. This result is unexpected since HP regions with a high glacier cover were previously thought to show a relatively low year-to-year variability of hydropower production potential [26]. Understanding in detail how the HP network structure buffers current year-to-year precipitation variability and how this might evolve in the future is left for future research.

## **7 Conclusion**

Alpine hydropower production (HP) is benefitting from glacier water resources that have been accumulated decades and centuries ago, and that cannot be replenished in the near future. This first quantification of the HP share originating from annual glacier mass loss at the scale of an Alpine region reveals that 3.1% to 4% of the total annual Swiss HP presently originates from this transient water resource. The share will rapidly decline for all Swiss regions, resulting in a reduction of the present-day production levels of about  $1.0 \text{ TWh yr}^{-1}$  by mid-century. This

figure is comparable to the  $1.4 \text{ TWh yr}^{-1}$  production loss that can be expected from the implementation of the new Swiss water protection act [47, 54]. An exception is given for the Rhone river catchment, in which the relatively large amount of glaciers will continue to provide increased amounts of meltwater at least until the late 2040s.

Despite of observational uncertainties, we have shown that the presented estimates are robust. We anticipate our results to have direct implications for national HP infrastructure projects, such as storage increase at high elevation sites or multipurpose projects combining HP and the regulation of interannual hydrological variability.

Beyond the scale of the analyzed case study, the relevance of our results can be summarized as follows: First of all, the results for Switzerland show that the impact of glacier retreat on HP can be reliably estimated from regional electricity coefficient trends, which here was shown to be of around  $1.0 \text{ kWh m}^{-3}$  per 1000 m elevation increase. Second, the results for Switzerland underline that significant annual HP reduction might result from glacier retreat already in the near future; the highlighted large regional differences call for more detailed studies in Europe and elsewhere.

## **Acknowledgements**

The first two authors acknowledge the funding by the Swiss Competence Centre for Energy Research – Supply of Electricity (SCCER-SoE, Switzerland). The work of the last author was funded by the Swiss National Science Foundation (SNSF Ambizione Energy grant number 154290). The HydroGIS database was made available by M. Balmer. The meteorological data (ANETZ stations) is available from MeteoSwiss (<https://gate.meteoswiss.ch/idaweb>), the topographical data by SwissTopo (no free distribution). We also would like to thank M. Zappa (WSL) for the monthly discharge data set [49], which corresponds to an improved version of the dataset that is currently published by the Swiss Federal Office for the environment [57] here: [www.bafu.admin.ch/mq-gwn-ch-e](http://www.bafu.admin.ch/mq-gwn-ch-e)



## References

- [1] Gernaat D, Bogaart PW, van Vuuren DP, Biemans H, Niessink R. High-resolution assessment of global technical and economic hydropower potential. *Nature Energy*. 2017;2.
- [2] Eurostat. Renewable energy statistics, Figure 5: Gross electricity generation from renewable sources, EU-28, 1990-2016, available at: [http://ec.europa.eu/eurostat/statistics-explained/index.php/Renewable\\_energy\\_statistics#30.25\\_of\\_electricity\\_generated\\_come\\_from\\_renewable\\_sources](http://ec.europa.eu/eurostat/statistics-explained/index.php/Renewable_energy_statistics#30.25_of_electricity_generated_come_from_renewable_sources) (accessed on 11 July 2018). 2018.
- [3] Lehner B, Czisch G, Vassolo S. The impact of global change on the hydropower potential of Europe: a model-based analysis. *Energy Policy*. 2005;33:839-55.
- [4] Barnett TP, Adam JC, Lettenmaier DP. Potential impacts of a warming climate on water availability in snow-dominated regions. *Nature*. 2005;438:303-9.
- [5] Bauermann K, Spiecker S, Weber C. Individual decisions and system development – Integrating modelling approaches for the heating market. *Appl Energy*. 2014;116:149-58.
- [6] Voisin N, Kintner-Meyer M, Skaggs R, Nguyen T, Wu D, Dirks J, et al. Vulnerability of the US western electric grid to hydro-climatological conditions: How bad can it get? *Energy*. 2016;115:1-12.
- [7] Hamududu B, Killingtveit A. Assessing Climate Change Impacts on Global Hydropower. *Energies*. 2012;5:305-22.
- [8] Kao SC, Sale MJ, Ashfaq M, Martinez RU, Kaiser DP, Wei YX, et al. Projecting changes in annual hydropower generation using regional runoff data: An assessment of the United States federal hydropower plants. *Energy*. 2015;80:239-50.
- [9] Schaeffli B. Projecting hydropower production under future climates: a guide for decision-makers and modelers to interpret and design climate change impact assessments. *WIREs Water*. 2015;2:271–89.
- [10] Christensen NS, Lettenmaier DP. A multimodel ensemble approach to assessment of climate change impacts on the hydrology and water resources of the Colorado River Basin. *Hydrology and Earth System Sciences*. 2007;11:1417-34.
- [11] Madani K, Lund JR. Estimated impacts of climate warming on California's high-elevation hydropower. *Climatic Change*. 2010;102:521-38.
- [12] Bolch T, Kulkarni A, Kääb A, Huggel C, Paul F, Cogley JG, et al. The State and Fate of Himalayan Glaciers. *Science*. 2012;336:310-4.
- [13] Bradley RS, Vuille M, Diaz HF, Vergara W. Threats to Water Supplies in the Tropical Andes. *Science*. 2006;312:1755-6.
- [14] Orlove B. GLACIER RETREAT Reviewing the Limits of Human Adaptation to Climate Change. *Environment*. 2009;51:22-34.
- [15] Gaudard L, Romerio F, Dalla Valle F, Gorret R, Maran S, Ravazzani G, et al. Climate change impacts on hydropower in the Swiss and Italian Alps. *Sci Total Environ*. 2014;493:1211-21.
- [16] Schaeffli B, Hingray B, Musy A. Climate change and hydropower production in the Swiss Alps: quantification of potential impacts and related modelling uncertainties. *Hydrology and Earth System Sciences*. 2007;11:1191-205.
- [17] Vergara W, Deeb A, Valencia A, Bradley R, Francou B, Zarzar A, et al. Economic impacts of rapid glacier retreat in the Andes. *EOS, Transactions American Geophysical Union*. 2007;88:261-4.
- [18] Beck M, Scherer M. SwissGrid - Overview of ancillary services, available at [https://www.swissgrid.ch/dam/swissgrid/experts/ancillary\\_services/Dokument/D100412\\_AS-concept\\_V1R0\\_en.pdf](https://www.swissgrid.ch/dam/swissgrid/experts/ancillary_services/Dokument/D100412_AS-concept_V1R0_en.pdf), last accessed 23 January 2018. Frick, Switzerland 2010. p. 6.
- [19] Swiss Federal Office for Energy. Swiss Electricity statistics 2016. Annual report available at <http://www.bfe.admin.ch/themen/00526/00541/00542/00630/index.html?lang=en> (accessed 25 Sept. 2017); time series available upon direct request. Bern: Swiss Federal Office for Energy; 2017. p. 56.
- [20] Fischer M, Huss M, Hoelzle M. Surface elevation and mass changes of all Swiss glaciers 1980-2010. *Cryosphere*. 2015;9:525-40.

- [21] Pfaundler M, Zappa M. Die mittleren Abflüsse über die ganze Schweiz - Ein optimierter Datensatz im 500×500 m Raster, available on <http://www.bafu.admin.ch/hydrologie>. 2008.
- [22] Huss M, Hock R. A new model for global glacier change and sea-level rise. *Frontiers in Earth Science*. 2015;3.
- [23] Balmer M. Nachhaltigkeitsbezogene Typologisierung der schweizerischen Wasserkraftanlagen - GIS-basierte Clusteranalyse und Anwendung in einem Erfahrungskurvenmodell. Zürich: ETHZ; 2012.
- [24] Blanc P, Schädler B. Water in Switzerland - an overview, available in English on <http://www.naturalsciences.ch/topics/water/> (accessed 18.08.2015). Bern 2013. p. 28.
- [25] Weingartner R, Aschwanden H. Discharge regime - the basis for the estimation of average flows. Plate 5.2, Hydrological Atlas of Switzerland, <http://hades.unibe.ch>. In: Weingartner R, Spreafico M, editors. Berne: Swiss National Hydrological and Geological Survey; 1992.
- [26] Hänggi P, Weingartner R. Variations in Discharge Volumes for Hydropower Generation in Switzerland. *Water Resour Manag*. 2012;26:1231-52.
- [27] Huss M, Farinotti D, Bauder A, Funk M. Modelling runoff from highly glacierized alpine drainage basins in a changing climate. *Hydrological Processes*. 2008;22:3888-902.
- [28] Farinotti D, Usselman S, Huss M, Bauder A, M. F. Runoff evolution in the Swiss Alps: projections for selected high-alpine catchments based on ENSEMBLES scenarios. *Hydrological Processes*. 2012;26:1909–24.
- [29] Horton P, Schaepli B, Hingray B, Mezghani A, Musy A. Assessment of climate change impacts on Alpine discharge regimes with climate model uncertainty. *Hydrological Processes*. 2006;20:2091-109.
- [30] Finger D, Heinrich G, Gobiet A, Bauder A. Projections of future water resources and their uncertainty in a glacierized catchment in the Swiss Alps and the subsequent effects on hydropower production during the 21st century. *Water Resources Research*. 2012;48:W02521.
- [31] Addor N, Rössler O, Köplin N, Huss M, Weingartner R, Seibert J. Robust changes and sources of uncertainty in the projected hydrological regimes of Swiss catchments. *Water Resources Research*. 2014;50:7541–62.
- [32] Swiss Federal Office for Energy. Statistics of the Swiss hydropower facilities - Statistik der Wasserkraftanlagen der Schweiz (WASTA), state 01. 01. 2017, available on [http://www.bfe.admin.ch/geoinformation/05061/05249/index.html?lang=de&dossier\\_id=01049](http://www.bfe.admin.ch/geoinformation/05061/05249/index.html?lang=de&dossier_id=01049) (last accessed 25 Sept. 2017). Bern, Switzerland: Swiss Federal Office for Energy; 2017.
- [33] Swiss Federal Office for Energy. Dams and reservoirs under the supervision of the federal government, <http://www.bfe.admin.ch>, Home > Topics > Supervision and Safety > Dams, state 19. 12. 2016 (last accessed 25 Sept. 2017). Bern, Switzerland: Swiss Federal Office for Energy; 2017.
- [34] Manso P, Schaepli B, Schleiss AJ. Adaptation of Swiss hydropower infrastructure to meet future electricity needs. *Hydro 2015, Advancing policy and practice*. Bordeaux, 26 - 28 Oct. 2015: The International Journal on Hydropower and Dams; 2015.
- [35] Gurung AB, Borsdorf A, Fureder L, Kienast F, Matt P, Scheidegger C, et al. Rethinking Pumped Storage Hydropower in the European Alps A Call for New Integrated Assessment Tools to Support the Energy Transition. *Mountain Research and Development*. 2016;36:222-32.
- [36] Fatichi S, Rimkus S, Burlando P, Bordoy R, Molnar P. High-resolution distributed analysis of climate and anthropogenic changes on the hydrology of an Alpine catchment. *Journal of Hydrology*. 2015;525:362-82.
- [37] Terrier S, Bieri M, Jordan F, Schleiss AJ. Impact of glacier shrinkage and adapted hydropower potential in the Swiss Alps. *Houille Blanche-Rev Int*. 2015:93-101.
- [38] Wagner T, Themeßl M, Schüppel A, Gobiet A, Stigler H, Birk S. Impacts of climate change on stream flow and hydro power generation in the Alpine region. *Environmental Earth Sciences*. 2016;76:4.
- [39] Huss M, Jouvét G, Farinotti D, Bauder A. Future high-mountain hydrology: a new parameterization of glacier retreat. *Hydrology and Earth System Sciences*. 2010;14:815-29.
- [40] Gabbi J, Farinotti D, Bauder A, Maurer H. Ice volume distribution and implications on runoff projections in a glacierized catchment. *Hydro Earth Syst Sci*. 2012;16:4543-56.

- [41] FOEN. Effects of Climate Change on Water Resources and Waters. Synthesis report on “Climate Change and Hydrology in Switzerland” (CCHydro) project. Results also available at <https://hydro.slf.ch/sihl/cchydro/#> (accessed 26 Feb. 2016). Bern: Federal Office for the Environment; 2012. p. 74.
- [42] SGHL, CHy. Auswirkungen der Klimaänderung auf die Wasserkraftnutzung – Synthesebericht. Beiträge zur Hydrologie der Schweiz, Nr 38. Bern: Swiss Society of Hydrology and Limnology (SGHL) and Swiss Hydrological Commission (CHy); 2011. p. 28.
- [43] Farinotti D, Pistocchi A, Huss M. From dwindling ice to headwater lakes: could dams replace glaciers in the European Alps? Environmental Research Letters. 2016;11:054022.
- [44] Speich MJR, Bernhard L, Teuling AJ, Zappa M. Application of bivariate mapping for hydrological classification and analysis of temporal change and scale effects in Switzerland. Journal of Hydrology. 2015;523:804-21.
- [45] Huss M, Zemp M, Joerg PC, Salzmann N. High uncertainty in 21st century runoff projections from glacierized basins. Journal of Hydrology. 2014;510:35-48.
- [46] Langhammer L, Rabenstein L, Bauder A, Maurer H. Ground-penetrating radar antenna orientation effects on temperate mountain glaciers. Geophysics. 2017;82:H15-H24.
- [47] Schleiss A. ROADMAP Hydropower, Swiss Competence Center on Energy Research - Supply of Energy, <http://www.sccer-soe.ch/opencms/opencms/roadmap/roadmap2014/>, accessed on 10 Feb. 2015. 2014.
- [48] Swiss Federal Office for Energy. Swiss Electricity statistics 2015, available at <http://www.bfe.admin.ch/themen/00526/00541/00542/00630/index.html?lang=en> (accessed 14. July 2016). Bern: Swiss Federal Office for Energy; 2016. p. 56.
- [49] Zappa M, Bernhard L, Fundel F, Joerg-Hess S. Vorhersage und Szenarien von Schnee- und Wasserressourcen im Alpenraum. Data set available from the lead author. Forum für Wissen. 2012:19-27.
- [50] Swiss Federal Office for the Environment. Mean monthly and annual runoff depths, digital data set, available at: <http://www.bafu.admin.ch/wasser/13462/13496/15015/index.html?lang=en> (accessed 01.03.2016). 2016.
- [51] Fischer M, Huss M, Barboux C, Hoelzle M. The New swiss glacier inventory SGI2010: relevance of using high-resolution source data in areas dominated by very small glaciers. Arctic, Antarctic, and Alpine Research. 2014;46:933-45.
- [52] Dee DP, Uppala SM, Simmons AJ, Berrisford P, Poli P, Kobayashi S, et al. The ERA-Interim reanalysis: configuration and performance of the data assimilation system. Quarterly Journal of the Royal Meteorological Society. 2011;137:553-97.
- [53] Taylor KE, Stouffer RJ, Meehl GA. An overview of CMIP5 and the experiment Bulletin of the American Meteorological Society. 2012;93:485-98.
- [54] Tonka L. Hydropower license renewal and environmental protection policies: a comparison between Switzerland and the USA. Reg Environ Change. 2015;15:539-48.
- [55] Grande Dixence. Grande Dixence - a legend in the heart of the Alps. [http://www.grande-dixence.ch/template/fs/documents/70p\\_A4-v3\\_2010\\_EN.pdf](http://www.grande-dixence.ch/template/fs/documents/70p_A4-v3_2010_EN.pdf), accessed 09 dec 2015. Sion: Grande Dixence SA; 2010. p. 72.
- [56] Kummer M, Baumgartner M, Devanthery D. Restwasserkarte. Schweiz. Wasserentnahmen und -rückgaben. (available <http://www.bafu.admin.ch/publikationen/publikation/00052/index.html?lang=fr>, accessed 03.12.2015)
- Bern, Switzerland: Swiss Federal Office for the Environment; 2007. p. 90.
- [57] Pfaundler M, Schönenberger U. Dataset MQ-GWN-CH, modeled natural runoff means for the Swiss river network, available at [www.bafu.admin.ch/mq-gwn-ch-e](http://www.bafu.admin.ch/mq-gwn-ch-e) (accessed 14 July 2016). Bern: Swiss Federal Office for the Environment, FOEN; 2013.
- [58] Swiss Federal Office for Energy. Statistics of the Swiss hydropower facilities - Statistik der Wasserkraftanlagen der Schweiz (WASTA), state 01. 01. 2015, available on <http://www.bfe.admin.ch/>. Bern, Switzerland: Swiss Federal Office for Energy; 2015.
- [59] SwissTopo. DHM25- The digital height model of Switzerland. Wabern, Switzerland2005.
- [60] SwissTopo. Vector25 - The digital landscape model of Switzerland. Wabern, Switzerland2008.

- [61] Schädler B, Weingartner R. Components of the natural water balance. Hydrologic atlas of Switzerland - Plate 6.3. Available at <http://www.hades.unibe.ch/> (accessed 01.03.2016). Bern: Service Hydrologique et Géologique National (SHGN); 2002.
- [62] Suter S, Konzelmann T, Mühlhäuser C, Begert M, Heimo A. SWISSMETNET – The new automatic meteorological network of Switzerland: transition from old to new network, data management and first results, available on <http://www.meteoschweiz.admin.ch/web/>. Zurich2006.
- [63] Pfeffer WT, Arendt AA, Bliss A, Bolch T, Cogley JG, Gardner AS, et al. The Randolph Glacier Inventory: a globally complete inventory of glaciers. *Journal of Glaciology*. 2014;60:537-52.
- [64] Gardner AS, Moholdt G, Cogley JG, Wouters B, Arendt AA, Wahr J, et al. A reconciled estimate of glacier contributions to sea level rise: 2003 to 2009. *Science*. 2013;340:852–7.
- [65] Swiss Federal Office for Energy. Swiss electricity statistics - Schweizerische Elektrizitätsstatistik 2014, available at [http://www.bfe.admin.ch/themen/00526/00541/00542/00630/index.html?lang=en&dossier\\_id=00765](http://www.bfe.admin.ch/themen/00526/00541/00542/00630/index.html?lang=en&dossier_id=00765) (accessed 02. 03. 2016). Bern2014. p. 52.

## Tables

Table 1: Overview of Swiss annual hydropower production (1980 – 2016), including energy consumption for water pumping from lower to upper reservoirs [48].

Hydropower production	TWh yr <sup>-1</sup>
Average production	35.7
Maximum (year 2001)	42.3
Minimum (year 1996)	29.7
Standard deviation	3.0
Average consumption for pumping	1.9

1 Table 2: Properties of the electricity statistics regions, including the coefficient of variation (cv) of precipitation and the production potential;  
 2 *glacier cover* indicates the relative glacier cover for the reference year 2010. The average values for the HP catchments are computed as the  
 3 average of all scheme catchments of a region. The electricity coefficient is the average value of all powerhouses within a region. Production  
 4 potential and precipitation data refer to period 1983-2014; normalization with the mean over this period.

Region	Total HP catchment area (km <sup>2</sup> )	Joint area (km <sup>2</sup> )	# power-houses	Average glacier cover of HP catchments (%)	Average elevation of HP catchments (m asl.)	Average elevation of powerhouses (m asl.)	Normalized annual production potential [min, max]	cv production potential	cv precipitation
Switzerland (CH)	39741	528278	402	3.7	1742	752	(0.85, 1.20)	0.08	0.10
Grisons	7088	10235	58	2.0	2162	1014	(0.77, 1.41)	0.14	0.10
Valais	5200	27324	70	12.2	2414	773	(0.83, 1.16)	0.07	0.10
Ticino	2735	2357	33	0.2	1816	1010	(0.63, 1.36)	0.16	0.11
Jura	2532	7075	8	0.0	992	637	(0.68, 1.36)	0.15	0.11
Plateau	10037	234419	147	1.3	1124	482	(0.87, 1.14)	0.07	0.11
North Alps	12408	246868	86	2.3	1530	658	(0.86, 1.15)	0.06	0.12

5

6

7 Table 3: Characteristic electricity coefficients (EC), computed at different levels. Area-scale ECs express how much hydropower is produced per  
 8  $m^3$  of water originating in that area, point -scale ECs express how much hydropower is produced per  $m^3$  transiting through that point. The  
 9 weighing type indicates how the underlying data is weighed (*design discharge* is the design discharge of the turbines, *exp.* stands for *expected*  
 10 and designates a design value rather than an actual observed value.

EC name	Scale	Aggregation level	Underlying EC data	Weighing	kWh $m^{-3}$
Powerhouses, average (n=284)	Point-scale	Powerhouses	Powerhouses	No weighing	0.634
Powerhouses, max	Point-scale	Powerhouses	Powerhouses	Does not apply	4.444
Powerhouses, min	Point-scale	Powerhouses	Powerhouses	Does not apply	0.004
Schemes, average	Area-scale	Schemes	Powerhouses	Exp. production hours x design discharge	0.591
Grisons	Area-scale	Production region	Schemes	Exp. annual production	0.856
Valais	Area-scale	Production region	Schemes	Exp. annual production	1.707
Ticino	Area-scale	Production region	Schemes	Exp. annual production	0.997
Jura	Area-scale	Production region	Schemes	Exp. annual production	0.216
Plateau	Area-scale	Production region	Schemes	Exp. annual production	0.020
North Alps	Area-scale	Production region	Schemes	Exp. annual production	0.530
Switzerland	Area-scale	Switzerland	Schemes	Exp. annual production	0.906
Rhine	Point-scale	HP Network	Powerhouses	Exp. production hours x design discharge	0.041
Rhine outlet, Birsfelden	Point-scale	Scheme	Powerhouses	Does not apply	0.018
Rhone	Point-scale	HP Network	Powerhouses	Exp. production hours x design discharge	0.269
Rhone outlet, Chancy-Pougny	Point-scale	Scheme	Powerhouses	Does not apply	0.021
CH glacier area	Area-scale	Switzerland	Regions	Interpolated from regions	2.101
Rhine glacier area	Area-scale	Switzerland	Regions	Interpolated from regions	1.892
Rhone glacier area	Area-scale	Switzerland	Regions	Interpolated from regions	2.212

11 Table 4: Observed average glacier mass balance changes (in mm of water equivalent) for Switzerland (CH), the Rhine and the Rhone HP  
 12 catchments at their outlet and the corresponding ratio of net annual ice melt to average annual discharge without considering HP nesting. A few  
 13 glaciers are not included neither in the Rhine river HP network nor in the Rhone HP network; some glacier water of the physiographic Rhone  
 14 catchment is exported, i.e. does not feed the Rhone river HP network (e.g. Gries).

	Area HP production catchments (km <sup>2</sup> )	Annual glacier Mass loss (mm yr <sup>-1</sup> )		Glacier area (km <sup>2</sup> )		Avg discharge reference period (mm yr <sup>-1</sup> )		Ratio of annual glacier mass loss to discharge (%)	
		1981-2000	1981-2010	1973	2010	1981-2000	1981-2010	1981-2000	1981-2010
CH	39741	479	620	1261.2	942.8	1037	1013	1.3	1.7
Rhine	26520	502	634	406.3	283.0	1007	984	0.65	0.8
Rhone	7655	452	579	682.5	543.4	1109	1092	3.3	4.2

15

16



17 Table 5: Estimated average HP ratios from glacier melt,  $\bar{\rho}_{CH}$ , estimated either from ratios of net glacier melt to total discharge (labeled  
 18 *discharge ratios*) or from glacier-averaged electricity coefficient (see Table 3), labeled *EC*. Confidence limits (given in brackets) can be  
 19 calculated for the EC method only; discharge-based estimations are weighted averages over the schemes, with weights corresponding to the  
 20 expected annual production of each scheme. For the simulations, the net ice melt corresponds to the melt between two simulation time periods.

Estimation method	Reference period simulation	Period	Source	$\bar{\rho}_{CH}$ (-)	$\bar{\rho}_{Rhine}$ (-)	$\bar{\rho}_{Rhine}$ (-)
avg EC		1981-2000	Obs	3.2 (1.8,5.2)	6.4 (3.4,10.2)	1.8 (1.0,2.9)
avg EC		1980-2010	Obs	4.0 (2.3,6.2)	7.8 (4.4,12.2)	2.2 (1.3,3.4)
Discharge ratios		1981-2000	Obs	3.1	7.0	1.5
Discharge ratios		1980-2010	Obs	3.8	8.6	1.8
Discharge ratios	2010-2020	2040-2060	GloGEM	2.5	7.1	0.4
Discharge ratios	2040-2060	2070-2090	GloGEM	1.2	3.8	0.1
	Expected production GWh yr <sup>-1</sup>	2005	HYDROGIS	36,458	10,341	18,931
	Avg HP GWh yr <sup>-1</sup>	1981-2000	Electricity stat.	34,738	9853*	18,038*
	Avg HP GWh yr <sup>-1</sup>	1980-2010	Electricity stat	35241	9996*	18299*
	Avg glacier elevation		SwissTopo	3042	3170	2814

21 \*estimated by scaling the Swiss-wide production by the expected production

22

23

## Figure captions

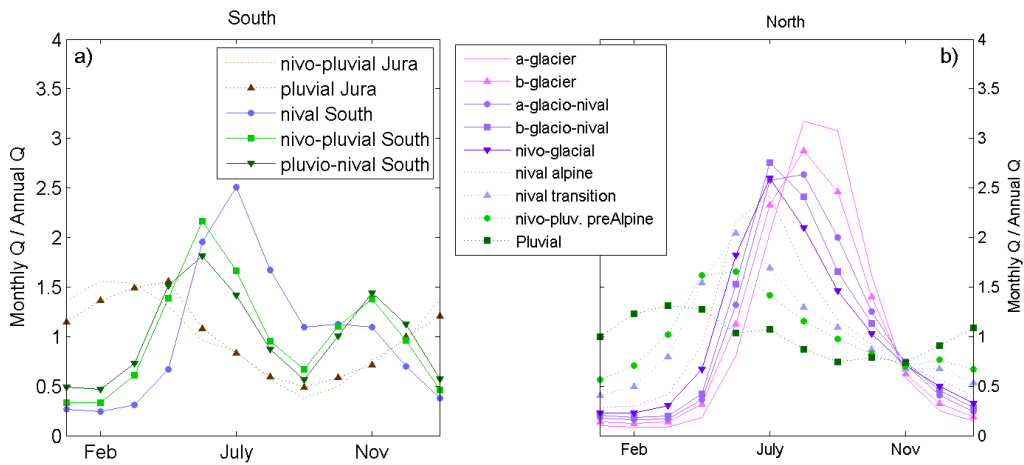


Figure 1: Swiss hydrological regimes in terms of the ratio between mean monthly streamflow and the mean annual streamflow (denoted as  $Q$ ); a) for south of the Alps and the Jura, b) for north of the Alps. Data source: [57].

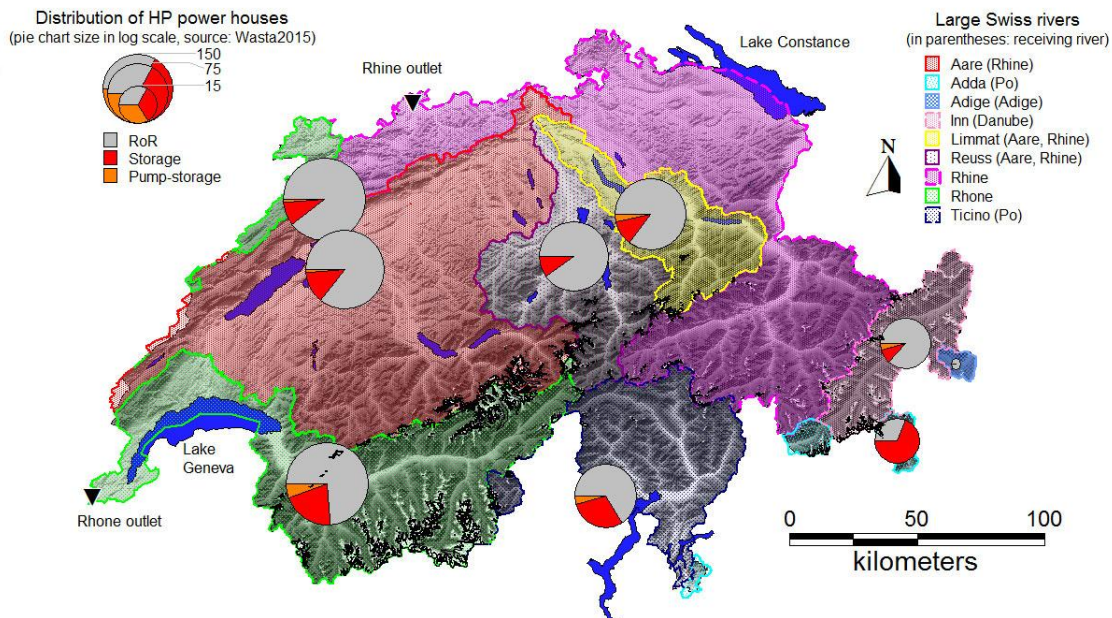


Figure 2: Distribution of main types of HP powerhouses according to the nine main Swiss river catchments; the Limmat and Reuss feed into the Aare river, which itself feeds into the Rhine river; own representation based on the HP powerhouse type and feeding catchment contained in [WASTA, 58]; other data sources: glacier outline [51], digital elevation model [59], lake vector data: [60], catchment vector data: Swiss Hydrological Atlas HADES [61]

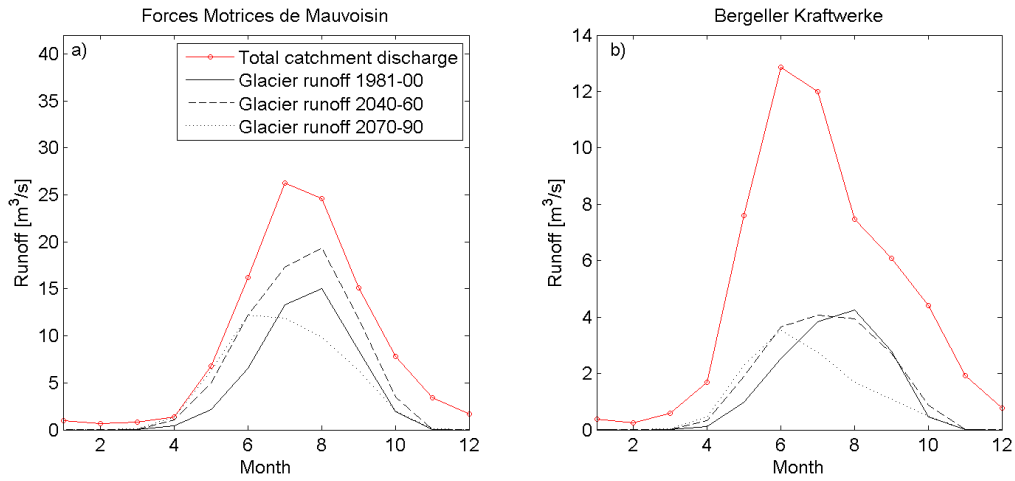


Figure 3: Present and future glacier runoff compared to the catchment discharge for the reference period for two selected HP catchments: a) Mauvoisin HP scheme located in the Upper Rhone River catchment; b) Bergeller HP scheme located in the Adda catchment (see Figure 2). Data source: glacier runoff [22], catchment discharge [49].

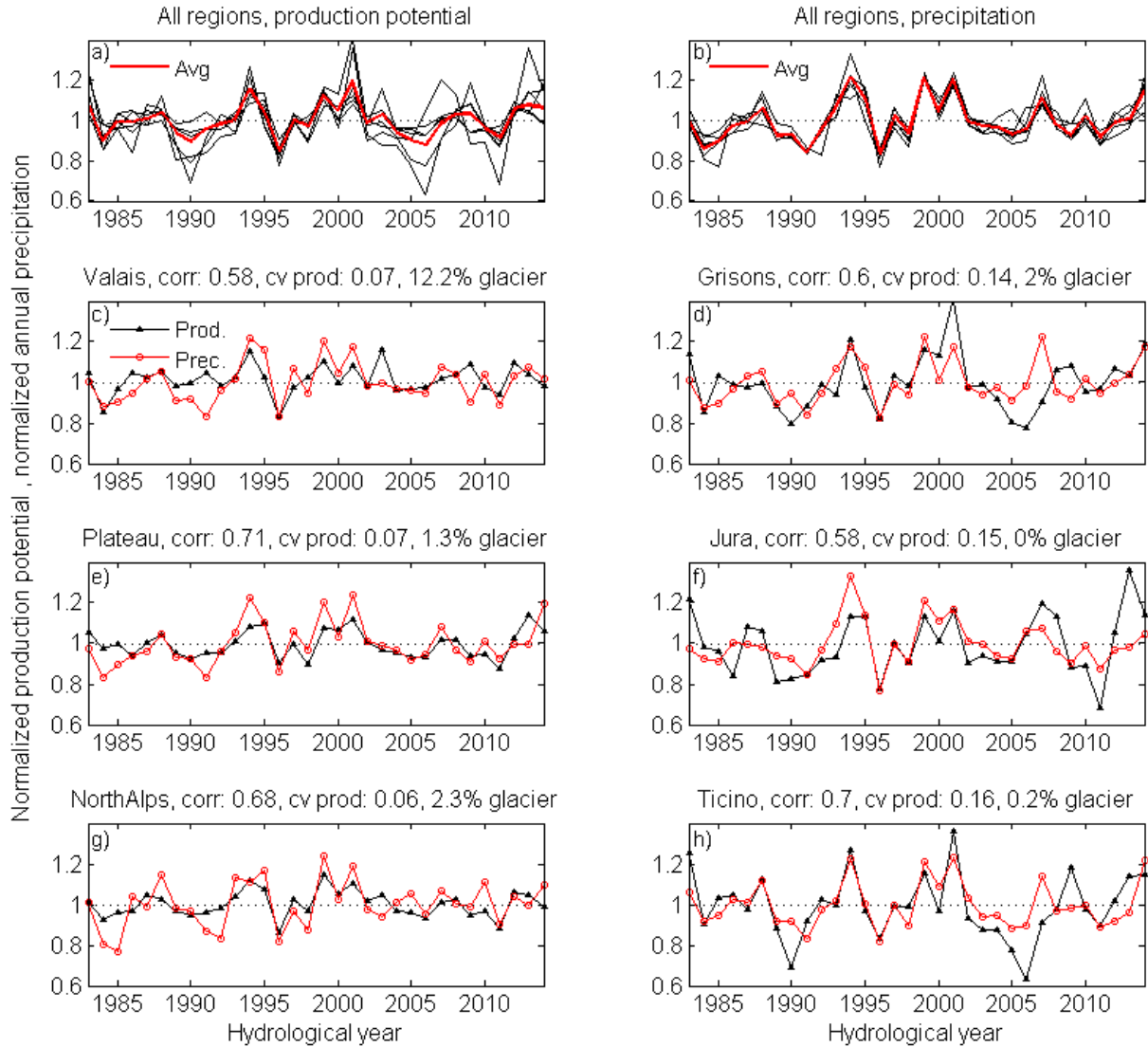


Figure 4: Normalized annual production potential and annual precipitation (with reference to the average value for the period 1983 – 2014): a) production potential for each of the six regions used in the electricity statistics and country-average, b) precipitation for each region and country-average (data as recorded at the SwissMetNet stations, [62], c) to h) production potential and precipitation per region; given is also the correlation between production potential and precipitation (*corr*), the coefficient of variation of the production potential (*cv prod*) and the degree of glacier cover. The hydrological year starts on 1 Oct.

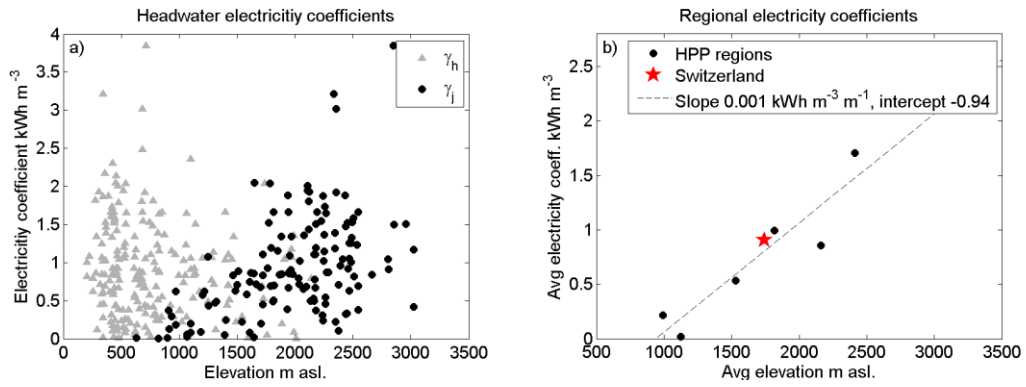


Figure 5: Relationship between elevation and electricity coefficients: a) electricity coefficients at the scale of headwater catchments; shown are the power house electricity coefficients  $\gamma_h$  against power house elevation and the scheme-scale electricity coefficients  $\gamma_j$  against catchment elevation; b) regional electricity coefficients,  $\gamma_r$ , for the six HP regions and for entire Switzerland against average scheme catchment elevation.

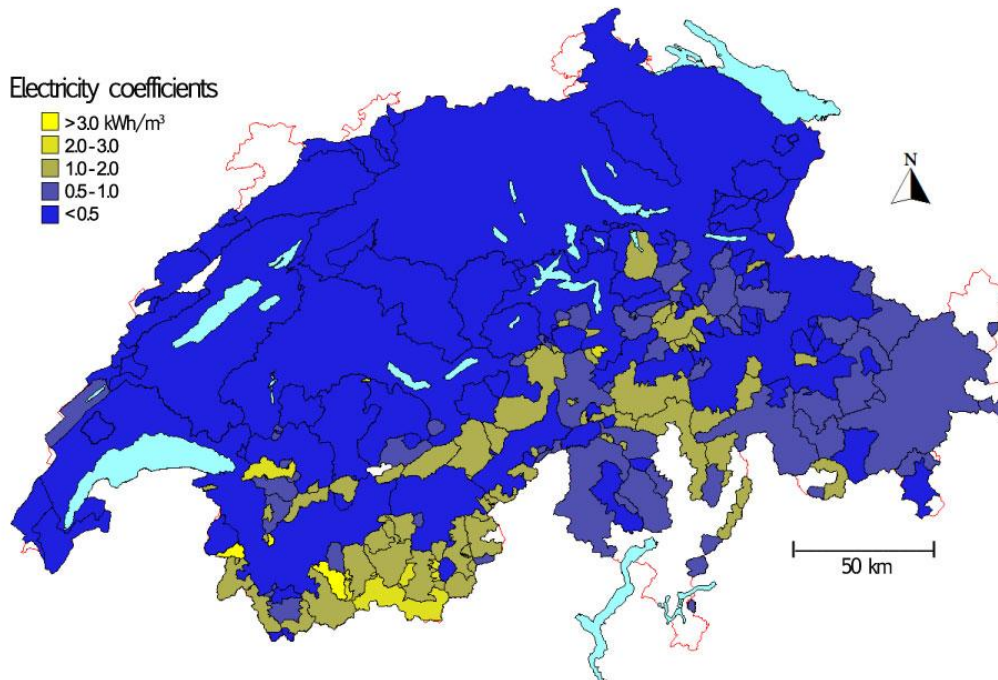


Figure 6: Spatial distribution of electricity coefficients of all HP schemes. The catchments are nested, lowland RoR catchments contain upstream catchments. Light blue corresponds to lake areas.

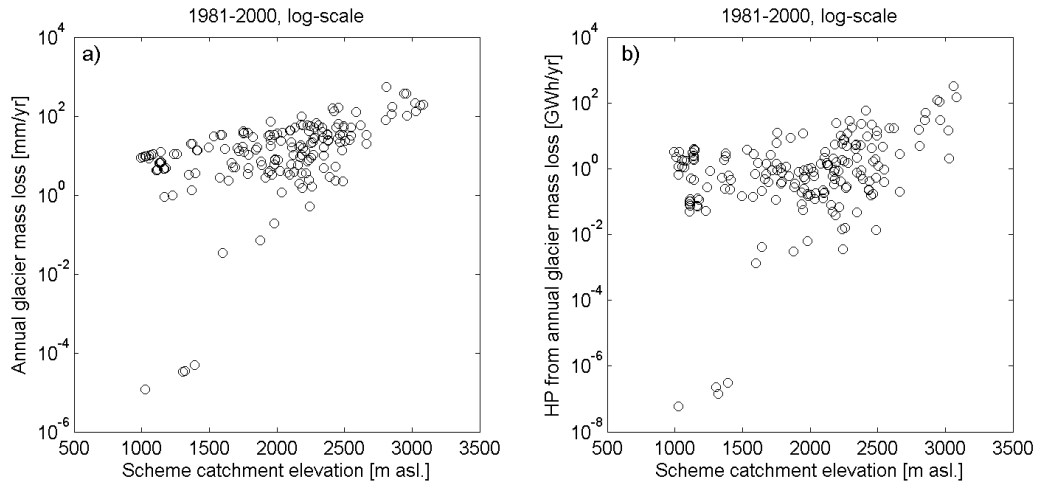


Figure 7: Annual glacier mass loss and corresponding hydropower production as a function of scheme catchment elevation for the period 1981-2000; a) annual glacier mass loss in  $\text{mm yr}^{-1}$  (log-scale) b) estimated hydropower production from annual glacier mass loss (multiplied with the electricity coefficient  $\gamma_j$ ) in  $\text{GWh yr}^{-1}$ .

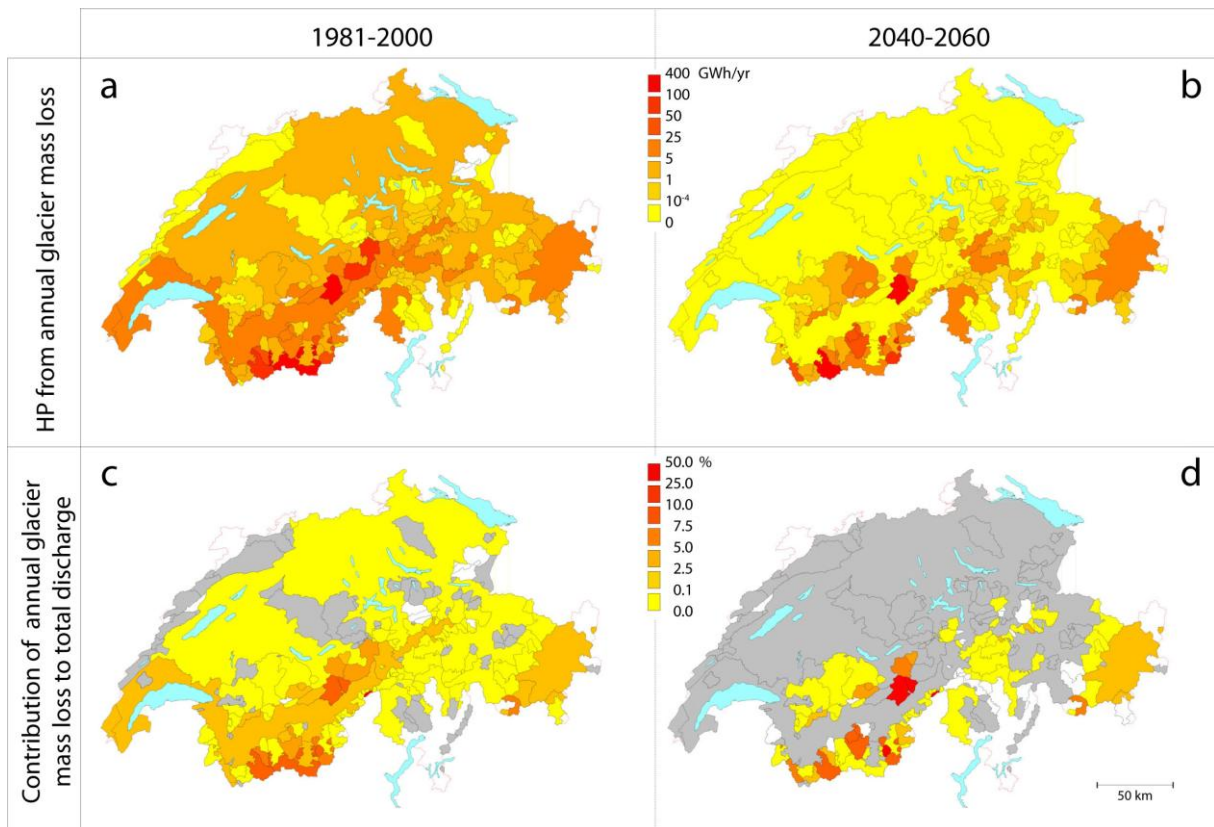


Figure 8 : Spatial distribution of the hydropower production from glacier mass loss; a) ratios  $\rho_{ij}$  for the period 1981-2000, b) ratios for the period 2040-2060 based on GloGEM simulations; c) hydropower production from glacier mass loss in  $\text{GWh yr}^{-1}$  for the period 1981-2010, d) 2040-2060 based on GloGEM simulations.

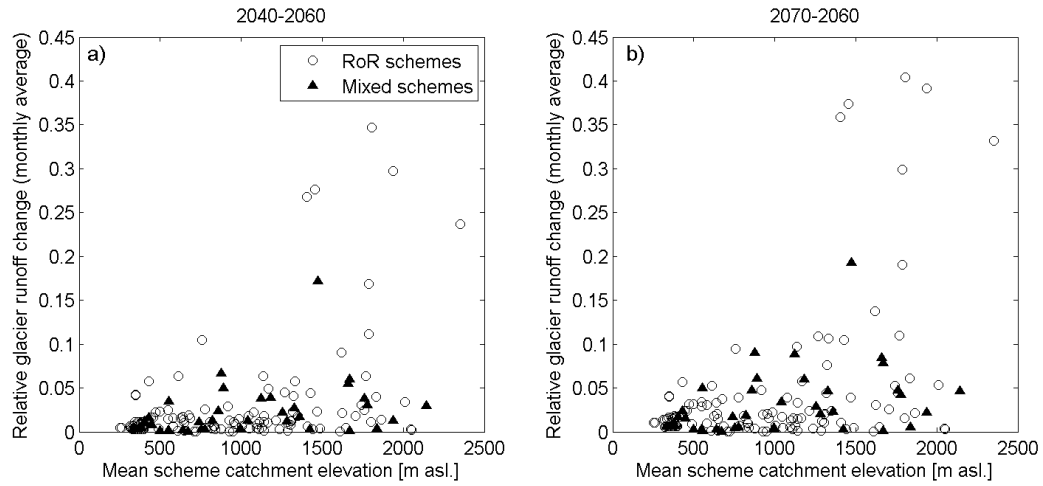


Figure 9: Glacier runoff change ratios ( $\delta_{ij}$ ) for all schemes that had glaciers during the reference period, plotted against scheme catchment elevation: left, period 2040-2060; right, period 2070-2090. The reference period is 1981-2000 for both future periods. Mixed schemes have run-of-river (RoR) and (pump-)storage hydropower production.

# Supplementary material for: The role of glaciers for Swiss hydropower production

Bettina Schaefli<sup>1,2</sup>, Pedro Manso<sup>2</sup>, Mauro Fischer<sup>3,4</sup>, Matthias Huss<sup>3,5</sup> Daniel Farinotti<sup>5,6</sup>

1: Institute of Earth Surface Dynamics, University of Lausanne, Switzerland

2: Laboratory of Hydraulic Constructions, School of Architecture, Civil and Environmental Engineering (ENAC), Ecole Polytechnique Fédérale de Lausanne (EPFL), Switzerland

3: Department of Geosciences, University of Fribourg, Switzerland

4: Department of Geography, University of Zürich, Switzerland

5: Laboratory of Hydraulics, Hydrology and Glaciology, ETH Zurich, Switzerland

6: Swiss Federal Institute for Forest, Snow and Landscape Research (WSL), Birmensdorf, Switzerland

Corresponding author: Bettina Schaefli, [bettina.schaefli@unil.ch](mailto:bettina.schaefli@unil.ch)

UNIL, FGSE-IDYST

Bâtiment Géopolis

1015 Lausanne

Switzerland

## Content:

The supplementary material contains detailed information on the computation of present and future glacier runoff, 3 tables and 3 figures and the list of cited references.



### ***Supplementary information on the computation of present and future glacier runoff***

All glacier runoff simulations are obtained from the GloGEM model [22], which has been initialised with the glacier geometry of 2003 provided by the Randolph Glacier Inventory [63]. The model has been calibrated with the mountain-range average mass change between 2003 and 2009 [64] and was validated against observed glacier-specific area and volume change [20, 51].

The reference catchment area for all glacier runoff computations is the glacier area for the reference simulation period (here 1981-2000). This catchment area is kept constant for the runoff simulation of future periods (2040-2060, 2070-2090) although the glaciers retreat. Accordingly, for the reference period, the entire catchment is glacier-covered, whereas for future periods some parts of the catchment do not have glacier cover and a classical rainfall-runoff transformation scheme is used [22]. These simulations do not account for any other climate-related changes than the effect of glacier retreat and enhanced melt from warming.

The glacier-scale simulations are aggregated to the scale of each HP catchment that have presently glaciers (175 HP schemes of the total 284 schemes analyzed here have glaciers in their catchment during the reference period 1981-2000). For the present study, all simulations are averaged to mean monthly runoff over the considered period (i.e. each period is characterized by 12 monthly runoff values).

Glacier runoff ratios are obtained by i) summing up the discharge for all grid cells contained in the catchment to obtain an estimate of catchment total discharge, and ii) forming the ratio of glacier runoff divided by this total discharge.

The compatibility of the glacier runoff simulations with the gridded monthly discharge estimates available from Zappa et al. [49] (see section “Natural discharge of Swiss rivers” in the main text) is assessed at the scale of each HP catchment by inspecting all monthly and yearly glacier runoff ratios. All yearly ratios are smaller than 1 except for one catchment of 37.4 km<sup>2</sup> that shows an unrealistically high annual runoff ratio (higher than 0.8.); Furthermore, one additional catchment of 10.3 km<sup>2</sup> has a May runoff ratio higher than 1.0. Given the small size of these catchments, this has no impact on the overall validity of the results presented here.

Table S6: Correspondence between the seven regions contained in the Swiss electricity statistics [65] and the nine main Swiss river catchments of Figure 2 (main document)

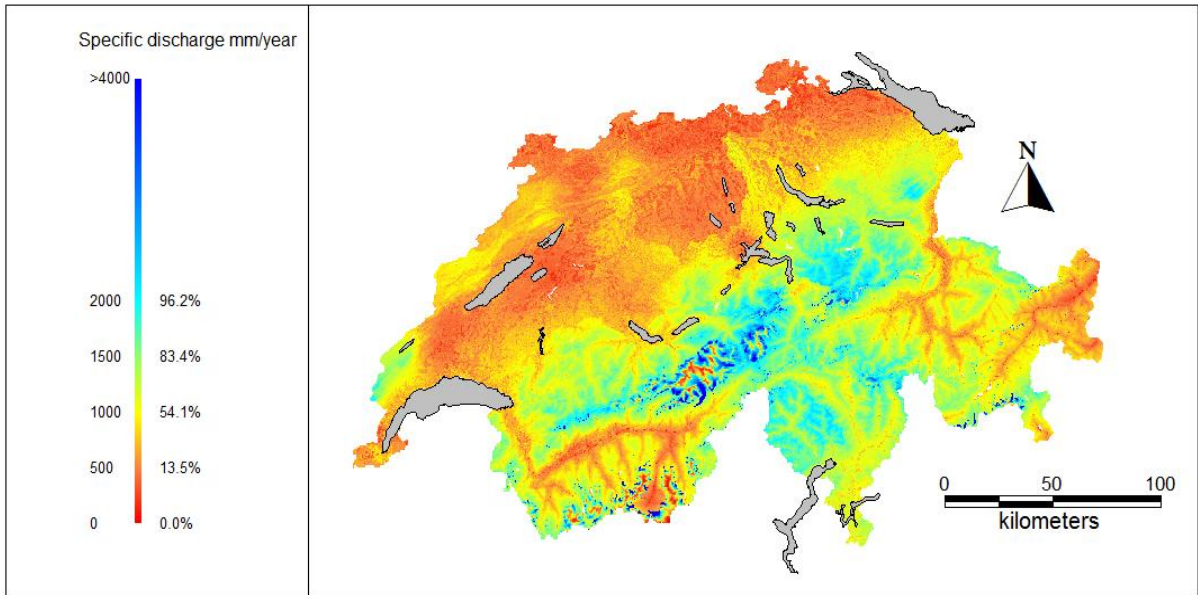
Abbreviation	Full name	Hydrological correspondence (see Figure 2)
VS	Canton Valais	Covers 93% of the Rhone river upstream of Lake of Geneva, includes all HP of the Rhone catchment upstream lake Geneva
TI	Canton Ticino	Covers approx. 80% of the Swiss part of the Ticino river catchment
GR	Canton Grisons	Covers the headwaters of the Inn river catchment, the upper Rhine river catchment, the Adda and the Adige catchments
Jura	Jura region	North-western mountain ridge (partly feeding the Aare river catchment, partly the Rhone river catchment at Geneva)
Plateau	Plateau region	Low lying areas up to 600 m asl. not included in previous regions, covering the low lying areas of the Aare, Limmat, Reuss and Rhine catchments
Northern Alps	Northern Alps	All areas above 600 m asl. not included in previous regions, covering the Alpine areas of the Aare, Limmat and Reuss catchments

Table S2: Catchment areas corresponding to different run-of-river hydropower production locations in Switzerland

Entity / location	Area	Comment, source
Switzerland	41200 km <sup>2</sup>	[60]
Total Swiss HP catchment	39740 km <sup>2</sup>	analysis of HYDROGIS [23]
Rhine in Basel	26430 km <sup>2</sup>	entire Swiss Rhine catchment, HYDROGIS [23]
Rhone in Geneva	7470 km <sup>2</sup>	entire Swiss Rhone catchment, HYDROGIS [23]
Inn in Pradella	1724 km <sup>2</sup>	entire Swiss Inn catchment, draining to Danube, HYDROGIS [23]

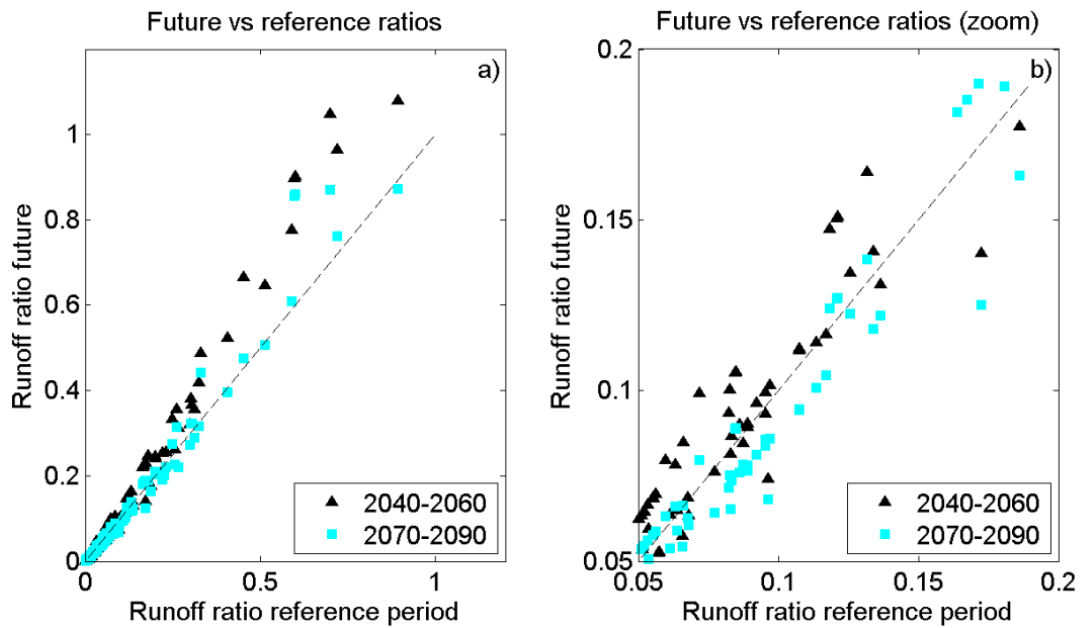
Table S3: Simulated and observed glacier volumes

Period	Source	Glacier area [km <sup>2</sup> ]	Glacier volume [km <sup>3</sup> ]	% of 2010 volume
1973	Fischer et al., 2015	1261.2	82.4	137.6
2010	Fischer et al., 2015	942.8	59.9	100.0
2040-2060	GloGEM	478.3	27.2	45.4
2070-2090	GloGEM	251.8	12.6	21.1



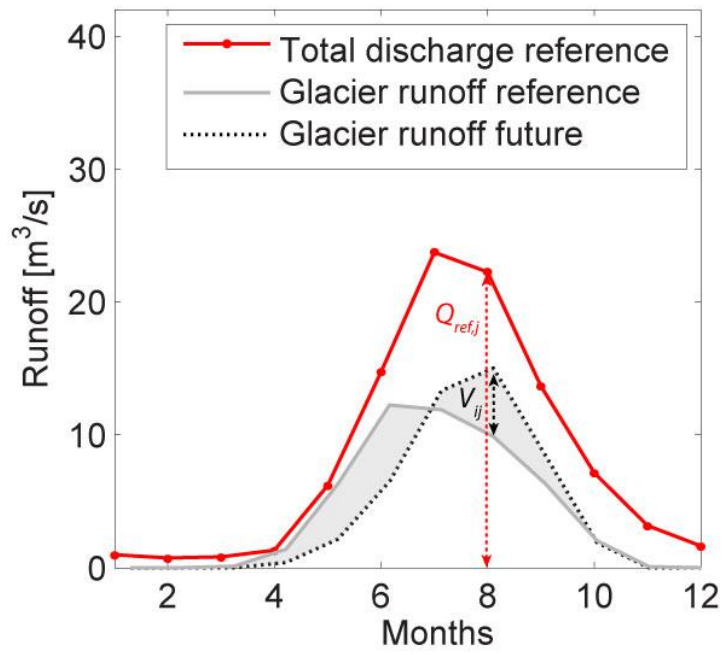
1  
 2 Figure S10: Spatial distribution of annual runoff for the period 1981-2000 in mm yr<sup>-1</sup>. Source  
 3 discharge data: [49]; source vector data: [60]

4  
 5



6  
 7 Figure S11: a) Ratio of simulated glacier runoff (total runoff from the glacier-covered part, including  
 8 ice melt and runoff from rainfall and snowmelt over the glacier) divided by simulated total catchment  
 9 runoff for all 172 HP schemes that have currently glaciers in their catchments and for three different  
 10 periods; b) as a) but zoom on small ratios.

11  
 12



13

14 Figure S12: Sketch of the computation of relative glacier runoff volume changes  $\delta_{ij}$  (Equation 11 of  
15 the main text), obtained as  $V_{ij}$  divided by  $Q_{ref}$ .

16

17 **References**

- 18 [1] Gernaat D, Bogaart PW, van Vuuren DP, Biemans H, Niessink R. High-  
19 resolution assessment of global technical and economic hydropower potential.  
20 *Nature Energy*. 2017;2:821–8.
- 21 [2] Eurostat. Renewable energy statistics, Figure 5: Gross electricity generation  
22 from renewable sources, EU-28, 1990-2016, available at:  
23 [http://ec.europa.eu/eurostat/statistics-](http://ec.europa.eu/eurostat/statistics-explained/index.php/Renewable_energy_statistics#30.25_of_electricity_generated_come_from_renewable_sources)  
24 [explained/index.php/Renewable\\_energy\\_statistics#30.25\\_of\\_electricity\\_gener-](http://ec.europa.eu/eurostat/statistics-explained/index.php/Renewable_energy_statistics#30.25_of_electricity_generated_come_from_renewable_sources)  
25 [ated\\_come\\_from\\_renewable\\_sources](http://ec.europa.eu/eurostat/statistics-explained/index.php/Renewable_energy_statistics#30.25_of_electricity_generated_come_from_renewable_sources) (accessed on 11 July 2018). 2018.
- 26 [3] Lehner B, Czisch G, Vassolo S. The impact of global change on the  
27 hydropower potential of Europe: a model-based analysis. *Energy Policy*.  
28 2005;33:839-55.
- 29 [4] Barnett TP, Adam JC, Lettenmaier DP. Potential impacts of a warming  
30 climate on water availability in snow-dominated regions. *Nature*.  
31 2005;438:303-9.
- 32 [5] Bauermann K, Spiecker S, Weber C. Individual decisions and system  
33 development – Integrating modelling approaches for the heating market. *Appl*  
34 *Energy*. 2014;116:149-58.
- 35 [6] Voisin N, Kintner-Meyer M, Skaggs R, Nguyen T, Wu D, Dirks J, et al.  
36 Vulnerability of the US western electric grid to hydro-climatological conditions:  
37 How bad can it get? *Energy*. 2016;115:1-12.
- 38 [7] Hamududu B, Killingtveit A. Assessing Climate Change Impacts on Global  
39 Hydropower. *Energies*. 2012;5:305-22.
- 40 [8] Kao SC, Sale MJ, Ashfaq M, Martinez RU, Kaiser DP, Wei YX, et al. Projecting  
41 changes in annual hydropower generation using regional runoff data: An  
42 assessment of the United States federal hydropower plants. *Energy*.  
43 2015;80:239-50.
- 44 [9] Schaeffli B. Projecting hydropower production under future climates: a guide  
45 for decision-makers and modelers to interpret and design climate change  
46 impact assessments. *WIREs Water*. 2015;2:271–89.
- 47 [10] Christensen NS, Lettenmaier DP. A multimodel ensemble approach to  
48 assessment of climate change impacts on the hydrology and water resources of  
49 the Colorado River Basin. *Hydrology and Earth System Sciences*. 2007;11:1417-  
50 34.
- 51 [11] Madani K, Lund JR. Estimated impacts of climate warming on California's  
52 high-elevation hydropower. *Climatic Change*. 2010;102:521-38.
- 53 [12] Bolch T, Kulkarni A, Kääb A, Huggel C, Paul F, Cogley JG, et al. The State and  
54 Fate of Himalayan Glaciers. *Science*. 2012;336:310-4.
- 55 [13] Bradley RS, Vuille M, Diaz HF, Vergara W. Threats to Water Supplies in the  
56 Tropical Andes. *Science*. 2006;312:1755-6.

- 57 [14] Orlove B. GLACIER RETREAT Reviewing the Limits of Human Adaptation to  
58 Climate Change. Environment. 2009;51:22-34.
- 59 [15] Gaudard L, Romerio F, Dalla Valle F, Gorret R, Maran S, Ravazzani G, et al.  
60 Climate change impacts on hydropower in the Swiss and Italian Alps. Sci Total  
61 Environ. 2014;493:1211-21.
- 62 [16] Schaefli B, Hingray B, Musy A. Climate change and hydropower production  
63 in the Swiss Alps: quantification of potential impacts and related modelling  
64 uncertainties. Hydrology and Earth System Sciences. 2007;11:1191-205.
- 65 [17] Vergara W, Deeb A, Valencia A, Bradley R, Francou B, Zarzar A, et al.  
66 Economic impacts of rapid glacier retreat in the Andes. EOS, Transactions  
67 American Geophysical Union. 2007;88:261-4.
- 68 [18] Beck M, Scherer M. SwissGrid - Overview of ancillary services, available at  
69 [https://www.swissgrid.ch/dam/swissgrid/customers/topics/ancillary-](https://www.swissgrid.ch/dam/swissgrid/customers/topics/ancillary-services/as-documents/D100412-AS-concept-V1R0-en.pdf)  
70 [services/as-documents/D100412-AS-concept-V1R0-en.pdf](https://www.swissgrid.ch/dam/swissgrid/customers/topics/ancillary-services/as-documents/D100412-AS-concept-V1R0-en.pdf), last accessed 09  
71 July 2018. Frick, Switzerland 2010. p. 6.
- 72 [19] Swiss Federal Office for Energy. Swiss Electricity statistics 2016. Annual  
73 report available at  
74 [http://www.bfe.admin.ch/themen/00526/00541/00542/00630/index.html?lan](http://www.bfe.admin.ch/themen/00526/00541/00542/00630/index.html?lang=en)  
75 [g=en](http://www.bfe.admin.ch/themen/00526/00541/00542/00630/index.html?lang=en) (last accessed 09 July 2018); time series available upon direct request.  
76 Bern: Swiss Federal Office for Energy; 2017. p. 56.
- 77 [20] Fischer M, Huss M, Hoelzle M. Surface elevation and mass changes of all  
78 Swiss glaciers 1980-2010. Cryosphere. 2015;9:525-40.
- 79 [21] Pfaundler M, Zappa M. Die mittleren Abflüsse über die ganze Schweiz - Ein  
80 optimierter Datensatz im 500×500 m Raster, available at  
81 [https://www.bafu.admin.ch/bafu/de/home/themen/wasser/zustand/karten/m](https://www.bafu.admin.ch/bafu/de/home/themen/wasser/zustand/karten/mittlerer-monatlicher-und-jaehrlicher-abfluss/mittlere-monatliche-und-jaehrliche-abflusshoehen.html)  
82 [ittlerer-monatlicher-und-jaehrlicher-abfluss/mittlere-monatliche-und-](https://www.bafu.admin.ch/bafu/de/home/themen/wasser/zustand/karten/mittlerer-monatlicher-und-jaehrlicher-abfluss/mittlere-monatliche-und-jaehrliche-abflusshoehen.html)  
83 [jaehrliche-abflusshoehen.html](https://www.bafu.admin.ch/bafu/de/home/themen/wasser/zustand/karten/mittlerer-monatlicher-und-jaehrlicher-abfluss/mittlere-monatliche-und-jaehrliche-abflusshoehen.html), last accessed 09 July 2018. 2008.
- 84 [22] Huss M, Hock R. A new model for global glacier change and sea-level rise.  
85 Frontiers in Earth Science. 2015;3:54.
- 86 [23] Balmer M. Nachhaltigkeitsbezogene Typologisierung der schweizerischen  
87 Wasserkraftanlagen - GIS-basierte Clusteranalyse und Anwendung in einem  
88 Erfahrungskurvenmodell. Zürich: ETHZ; 2012.
- 89 [24] Blanc P, Schädler B. Water in Switzerland - an overview, available in English  
90 on <http://www.naturalsciences.ch/topics/water/> (last accessed 09 July 2018).  
91 Bern 2013. p. 28.
- 92 [25] Weingartner R, Aschwanden H. Discharge regime - the basis for the  
93 estimation of average flows. Plate 5.2, Hydrological Atlas of Switzerland,  
94 <http://hades.unibe.ch> (last accessed on 09 July 2018. In: Weingartner R,  
95 Spreafico M, editors. Bern 1992.

- 96 [26] Hänggi P, Weingartner R. Variations in Discharge Volumes for Hydropower  
97 Generation in Switzerland. *Water Resour Manag.* 2012;26:1231-52.
- 98 [27] Huss M, Farinotti D, Bauder A, Funk M. Modelling runoff from highly  
99 glacierized alpine drainage basins in a changing climate. *Hydrological Processes.*  
100 2008;22:3888-902.
- 101 [28] Farinotti D, Usselman S, Huss M, Bauder A, M. F. Runoff evolution in the  
102 Swiss Alps: projections for selected high-alpine catchments based on  
103 ENSEMBLES scenarios. *Hydrological Processes.* 2012;26:1909–24.
- 104 [29] Horton P, Schaefli B, Hingray B, Mezghani A, Musy A. Assessment of  
105 climate change impacts on Alpine discharge regimes with climate model  
106 uncertainty. *Hydrological Processes.* 2006;20:2091-109.
- 107 [30] Finger D, Heinrich G, Gobiet A, Bauder A. Projections of future water  
108 resources and their uncertainty in a glacierized catchment in the Swiss Alps and  
109 the subsequent effects on hydropower production during the 21st century.  
110 *Water Resources Research.* 2012;48:W02521.
- 111 [31] Addor N, Rössler O, Köplin N, Huss M, Weingartner R, Seibert J. Robust  
112 changes and sources of uncertainty in the projected hydrological regimes of  
113 Swiss catchments. *Water Resources Research.* 2014;50:7541–62.
- 114 [32] Swiss Federal Office for Energy. Statistics of the Swiss hydropower facilities  
115 - Statistik der Wasserkraftanlagen der Schweiz (WASTA), state 01. 01. 2017,  
116 available on  
117 [http://www.bfe.admin.ch/geoinformation/05061/05249/index.html?lang=de&](http://www.bfe.admin.ch/geoinformation/05061/05249/index.html?lang=de&dossier_id=01049)  
118 [dossier\\_id=01049](http://www.bfe.admin.ch/geoinformation/05061/05249/index.html?lang=de&dossier_id=01049) (last accessed 09 July 2018). Bern, Switzerland: Swiss Federal  
119 Office for Energy; 2017.
- 120 [33] Swiss Federal Office for Energy. Dams and reservoirs under the supervision  
121 of the federal government, <http://www.bfe.admin.ch>, Home > Geodata >  
122 Dams and reservoirs or  
123 <http://www.bfe.admin.ch/geoinformation/05061/05251/index.html?lang=en>  
124 (last accessed 09 July 2018). Bern, Switzerland: Swiss Federal Office for Energy;  
125 2018.
- 126 [34] Manso P, Schaefli B, Schleiss AJ. Adaptation of Swiss hydropower  
127 infrastructure to meet future electricity needs. *Hydro 2015, Advancing policy*  
128 *and practice.* Bordeaux, 26 - 28 Oct. 2015: *The International Journal on*  
129 *Hydropower and Dams;* 2015.
- 130 [35] Gurung AB, Borsdorf A, Fureder L, Kienast F, Matt P, Scheidegger C, et al.  
131 Rethinking Pumped Storage Hydropower in the European Alps A Call for New  
132 Integrated Assessment Tools to Support the Energy Transition. *Mountain*  
133 *Research and Development.* 2016;36:222-32.

- 134 [36] Fatichi S, Rimkus S, Burlando P, Bordoy R, Molnar P. High-resolution  
135 distributed analysis of climate and anthropogenic changes on the hydrology of  
136 an Alpine catchment. *Journal of Hydrology*. 2015;525:362-82.
- 137 [37] Terrier S, Bieri M, Jordan F, Schleiss AJ. Impact of glacier shrinkage and  
138 adapted hydropower potential in the Swiss Alps. *Houille Blanche-Rev Int*.  
139 2015:93-101.
- 140 [38] Wagner T, Themeßl M, Schüppel A, Gobiet A, Stigler H, Birk S. Impacts of  
141 climate change on stream flow and hydro power generation in the Alpine  
142 region. *Environmental Earth Sciences*. 2016;76:4.
- 143 [39] Huss M, Jouvét G, Farinotti D, Bauder A. Future high-mountain hydrology:  
144 a new parameterization of glacier retreat. *Hydrology and Earth System  
145 Sciences*. 2010;14:815-29.
- 146 [40] Gabbi J, Farinotti D, Bauder A, Maurer H. Ice volume distribution and  
147 implications on runoff projections in a glacierized catchment. *Hydrol Earth Syst  
148 Sci*. 2012;16:4543-56.
- 149 [41] FOEN. Effects of Climate Change on Water Resources and Waters.  
150 Synthesis report on “Climate Change and Hydrology in Switzerland” (CCHydro)  
151 project. Results also available at <https://hydro.slf.ch/sihl/cchydro/#> (accessed  
152 26 Feb. 2016). Bern: Federal Office for the Environment,; 2012. p. 74.
- 153 [42] SGHL, CHy. Auswirkungen der Klimaänderung auf die Wasserkraftnutzung  
154 – Synthesebericht. Beiträge zur Hydrologie der Schweiz, Nr 38. Bern: Swiss  
155 Society of Hydrology and Limnology (SGHL) and Swiss Hydrological Commission  
156 (CHy); 2011. p. 28.
- 157 [43] Farinotti D, Pistocchi A, Huss M. From dwindling ice to headwater lakes:  
158 could dams replace glaciers in the European Alps? *Environmental Research  
159 Letters*. 2016;11:054022.
- 160 [44] Speich MJR, Bernhard L, Teuling AJ, Zappa M. Application of bivariate  
161 mapping for hydrological classification and analysis of temporal change and  
162 scale effects in Switzerland. *Journal of Hydrology*. 2015;523:804-21.
- 163 [45] Huss M, Zemp M, Joerg PC, Salzmänn N. High uncertainty in 21st century  
164 runoff projections from glacierized basins. *Journal of Hydrology*. 2014;510:35-  
165 48.
- 166 [46] Langhammer L, Rabenstein L, Bauder A, Maurer H. Ground-penetrating  
167 radar antenna orientation effects on temperate mountain glaciers. *Geophysics*.  
168 2017;82:H15-H24.
- 169 [47] Schleiss A. ROADMAP Hydropower, Swiss Competence Center on Energy  
170 Research - Supply of Energy, <http://www.sccer-soe.ch/en/aboutus/roadmaps/>  
171 (last accessed 09 July 2018). 2014.
- 172 [48] Swiss Federal Office for Energy. Swiss Electricity statistics 2015, available at  
173 <http://www.bfe.admin.ch/themen/00526/00541/00542/00630/index.html?lan>



- 174 [g=en](#) (accessed 14. July 2016). Bern: Swiss Federal Office for Energy; 2016. p.  
175 56.
- 176 [49] Zappa M, Bernhard L, Fundel F, Joerg-Hess S. Vorhersage und Szenarien  
177 von Schnee- und Wasserressourcen im Alpenraum. Data set available from the  
178 lead author. Forum für Wissen. 2012:19-27.
- 179 [50] Swiss Federal Office for the Environment. Mean monthly and annual runoff  
180 depths, digital data set, available  
181 at:[https://www.bafu.admin.ch/bafu/en/home/topics/water/state/maps/mean-  
182 -monthly-and-annual-runoff/mean-monthly-and-annual-runoff-depths.html](https://www.bafu.admin.ch/bafu/en/home/topics/water/state/maps/mean-monthly-and-annual-runoff/mean-monthly-and-annual-runoff-depths.html)  
183 (last accessed 09 July 2018). Bern 2013.
- 184 [51] Fischer M, Huss M, Barboux C, Hoelzle M. The New swiss glacier inventory  
185 SGI2010: relevance of using high-resolution source data in areas dominated by  
186 very small glaciers. Arctic, Antarctic, and Alpine Research. 2014;46:933-45.
- 187 [52] Dee DP, Uppala SM, Simmons AJ, Berrisford P, Poli P, Kobayashi S, et al.  
188 The ERA-Interim reanalysis: configuration and performance of the data  
189 assimilation system. Quarterly Journal of the Royal Meteorological Society.  
190 2011;137:553-97.
- 191 [53] Taylor KE, Stouffer RJ, Meehl GA. An overview of CMIP5 and the  
192 experiment Bulletin of the American Meteorological Society. 2012;93:485-98.
- 193 [54] Tonka L. Hydropower license renewal and environmental protection  
194 policies: a comparison between Switzerland and the USA. Reg Environ Change.  
195 2015;15:539-48.
- 196 [55] Grande Dixence. Grande Dixence - experience the energy at the heart of  
197 the Alps. [http://www.grande-dixence.ch/docs/default-  
198 -source/documentation/grande-dixence/Grande-Dixence-Experience-the-  
199 -energy-at-the-heart-of-the-Alps.pdf?sfvrsn=9](http://www.grande-dixence.ch/docs/default-source/documentation/grande-dixence/Grande-Dixence-Experience-the-energy-at-the-heart-of-the-Alps.pdf?sfvrsn=9) (last accessed 09 July 2018). Sion:  
200 Grande Dixence SA; 2010. p. 49.
- 201 [56] Kummer M, Baumgartner M, Devanthéry D. Restwasserkarte. Schweiz.  
202 Wasserentnahmen und -rückgaben (available  
203 [https://www.bafu.admin.ch/bafu/de/home/themen/wasser/publikationen-  
204 -studien/publikationen-wasser/restwasserkarte-schweiz.html](https://www.bafu.admin.ch/bafu/de/home/themen/wasser/publikationen-studien/publikationen-wasser/restwasserkarte-schweiz.html), accessed 09 July  
205 2018). Bern, Switzerland: Swiss Federal Office for the Environment; 2007. p. 90.
- 206 [57] Swiss Federal Office for the Environment (FOEN). Dataset MQ-GWN-CH,  
207 modeled natural runoff means for the Swiss river network, available at  
208 [https://www.bafu.admin.ch/bafu/en/home/topics/water/state/maps/mean-  
209 -monthly-and-annual-runoff/mean-runoff-and-flow-regime-types-for-the-river-  
210 -network-of-switz.html](https://www.bafu.admin.ch/bafu/en/home/topics/water/state/maps/mean-monthly-and-annual-runoff/mean-runoff-and-flow-regime-types-for-the-river-network-of-switz.html) (last accessed 09 July 2018. Bern: Swiss Federal Office  
211 for the Environment, FOEN; 2013.
- 212 [58] Swiss Federal Office for Energy. Statistics of the Swiss hydropower facilities  
213 - Statistik der Wasserkraftanlagen der Schweiz (WASTA), state 01. 01. 2015,

214 available at  
215 [http://www.bfe.admin.ch/geoinformation/05061/05249/index.html?lang=de&](http://www.bfe.admin.ch/geoinformation/05061/05249/index.html?lang=de&dossier_id=01049)  
216 [dossier\\_id=01049](http://www.bfe.admin.ch/geoinformation/05061/05249/index.html?lang=de&dossier_id=01049) (last accessed 09 July 2018). Bern, Switzerland: Swiss Federal  
217 Office for Energy; 2015.  
218 [59] SwissTopo. DHM25- The digital height model of Switzerland. Wabern,  
219 Switzerland2005.  
220 [60] SwissTopo. Vector25 - The digital landscape model of Switzerland.  
221 Wabern, Switzerland2008.  
222 [61] Schädler B, Weingartner R. Components of the natural water balance.  
223 Hydrologic atlas of Switzerland - Plate 6.3. Available at  
224 <http://www.hades.unibe.ch/> (last accessed 09 July 2018). Bern: Service  
225 Hydrologique et Géologique National (SHGN); 2002.  
226 [62] MeteoSwiss. Automatic monitoring network SWISSMETNET, available at  
227 [https://www.meteoswiss.admin.ch/home/measurement-and-forecasting-](https://www.meteoswiss.admin.ch/home/measurement-and-forecasting-systems/land-based-stations/automatisches-messnetz.html)  
228 [systems/land-based-stations/automatisches-messnetz.html](https://www.meteoswiss.admin.ch/home/measurement-and-forecasting-systems/land-based-stations/automatisches-messnetz.html) (last accessed 09  
229 July 2018). Zurich2018.  
230 [63] Pfeffer WT, Arendt AA, Bliss A, Bolch T, Cogley JG, Gardner AS, et al. The  
231 Randolph Glacier Inventory: a globally complete inventory of glaciers. Journal  
232 of Glaciology. 2014;60:537-52.  
233 [64] Gardner AS, Moholdt G, Cogley JG, Wouters B, Arendt AA, Wahr J, et al. A  
234 reconciled estimate of glacier contributions to sea level rise: 2003 to 2009.  
235 Science. 2013;340:852–7.  
236 [65] Swiss Federal Office for Energy. Swiss electricity statistics - Schweizerische  
237 Elektrizitätsstatistik 2014, available at  
238 [http://www.bfe.admin.ch/themen/00526/00541/00542/00630/index.html?lan](http://www.bfe.admin.ch/themen/00526/00541/00542/00630/index.html?lang=en&dossier_id=00765)  
239 [g=en&dossier\\_id=00765](http://www.bfe.admin.ch/themen/00526/00541/00542/00630/index.html?lang=en&dossier_id=00765) (accessed 02. 03. 2016). Bern2014. p. 52.  
240  
241  
242