
This manuscript is a preprint and has been accepted for publication in *The Leading Edge*. The manuscript has undergone three rounds of peer-review. When published, the final version of the manuscript will be available via the 'Peer-reviewed Publication DOI' link on the right-hand side of this web page. In the meantime, we are happy to receive feedback.

Deep learning of geological structures in 3-D seismic reflection data

Thilo Wrona^{1,2*}, Indranil Pan^{3,4}, Rebecca E. Bell⁵, Robert L. Gawthorpe¹, Haakon Fossen⁶ and Sascha Brune^{2,7}

¹Department of Earth Science, University of Bergen, Allégaten 41, N-5007 Bergen, Norway.

²GFZ German Research Centre for Geosciences, Telegrafenberg, 14473 Potsdam, Germany.

³Centre for Process Systems Engineering & Centre for Environmental Policy, Imperial College London, UK.

⁴The Alan Turing Institute, British Library, London, UK.

⁵Department of Earth Science and Engineering, Imperial College, Prince Consort Road, London, SW7 2BP, UK.

⁶Museum of Natural History, University of Bergen, Allégaten 41, N-5007 Bergen, Norway.

⁷Institute of Geosciences, University of Potsdam, Potsdam-Golm, Germany.

*wrona@gfz-potsdam.de

ABSTRACT

Understanding the internal structure of our planet is a fundamental goal of the Earth Sciences. As direct observations are restricted to surface outcrops and borehole cores, we rely on geophysical data to study the Earth's interior. Especially, seismic reflection data showing acoustic images of the subsurface, provide us with critical insights into sedimentary, tectonic and magmatic systems. The interpretation of these large, 2-D grids or 3-D seismic volumes is however time-consuming even for a well-trained person or team of people. Here, we demonstrate how to automate and accelerate the analysis of these increasingly large seismic datasets with machine learning. We are able to perform typical seismic interpretation tasks, such as the mapping of (1) tectonic faults, (2) salt bodies and (3) sedimentary horizons at high accuracy using deep convolutional neural networks. We share our workflows and scripts, encouraging users to apply our methods to similar problems. Our methodology is generic and flexible allowing an easy adaptation without major changes. Once trained, these models can analyze large volumes of data within seconds; opening a new exciting pathway to study the internal structure and processes shaping our planet.

1. INTRODUCTION

Deep learning is transforming the way we analyze large datasets in many scientific disciplines including medicine (e.g. *Esteva et al., 2017*), chemistry (e.g. *Butler et al., 2018*), and physics (e.g. *Carleo & Troyer, 2017*). In Earth Science, we use large volumes of geophysical data to learn about the internal structure of our planet. Seismic reflection data showing acoustic images of the subsurface are particularly important to our understanding of sedimentary, tectonic and magmatic systems. The emergence of 3-D seismic technology allows us to image geological structures in the subsurface at a resolution of a few tens of meters to over thousands of square kilometers (*Cartwright & Huuse, 2005*). While this technology provides fascinating insights into the Earth's interior, it does require increasing amounts of time, experience and expertise to analyze these large datasets (e.g. *Bond et al., 2012*).

In recent years, machine learning has thus been applied to numerous problems in seismic interpretation, such as: (1) salt detection (e.g., *Guillen et al., 2015; Waldeland et al., 2018*), (2) fault detection (e.g., *Zhang et al., 2014; Araya-Polo et al., 2017; Wu and Fomel, 2018*), (3) horizon mapping (e.g., *Peters et al., 2019; Tschannen et al., 2020*), and (4) seismic facies classification (e.g., *Qian et al., 2018; Wrona et al., 2018; Liu et al., 2019*). Most of these studies are built on recent advances in machine learning of multi-layered neural networks (i.e. deep learning). Deep learning describes a set of machine learning models that allow us to extract data representations (e.g. features, patterns) from raw data (*LeCun et al., 2015*). This allows us to learn where a particular geological feature is in the data without requiring engineering of a specific set of features (seismic attributes), which highlight it. In addition, we can use neural networks for unsupervised learning, where we do not pre-define the geological structures, we would like to detect (*Coléou et al., 2003; de Matos et al., 2007*).

With a few exceptions (*e.g. Waldeland et al., 2018*), many studies exploring deep learning in seismic interpretation do not publish their code. Given the complexity and sensitivity of these models, this makes it extremely difficult to replicate, compare and evaluate different approaches. Moreover, deep learning models are hardly used in practice, where seismic interpretations are almost exclusively performed by experts. Here, we show that deep learning allows us to analyse large volumes of two-dimensional (2-D) and/or three-dimensional (3-D) seismic reflection data. We explain: (1) how these techniques work; (2) how to apply them to geophysical datasets and (3) which challenges occur and what remedies are available. Deep learning describes a set of machine learning models that allow us to extract data representations (*e.g. features, patterns*) from the raw data (*LeCun et al., 2015*). Here, we train these models to perform all typical seismic interpretation tasks, such as: (1) mapping faults, (2) extracting geobodies, and (3) tracing stratigraphic horizons in 3-D seismic reflection data. This can accelerate the analysis of geophysical datasets significantly, allowing us to study the structure and internal processes of the Earth in great detail.

2. 3-D SEISMIC REFLECTION DATA

We exemplify our technique using 3-D seismic reflection data from the northern North Sea. This newly-acquired dataset covers an area 35,410 km², imaging the crust down to 20 km depth. The dataset was acquired using a series of up to 8-km-long streamers towed ~40 m below the water surface. The broadseis technology, used for recording, covers a wide range of frequencies (2.5-155 Hz) providing high resolution depth imaging. The data was binned at 12.5 × 18.75 m with a vertical sample rate of 4 ms. The data was 3-D true amplitude Kirchhoff prestack time migrated. The seismic volume was zero-phase processed with SEG normal polarity; *i.e.*, a positive reflection (white) corresponds to an acoustic

impedance (density \times velocity) increase with depth. More details on data acquisition and pre-processing steps are in the supplemental material.

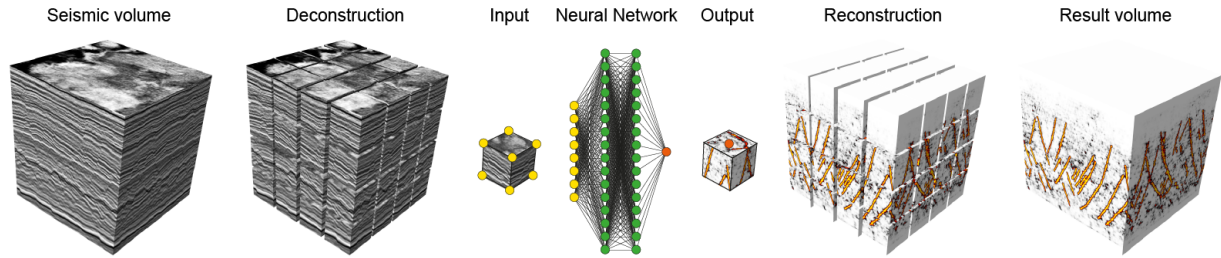


Figure 1. Schematic illustration of deep learning of 3-D seismic reflection data. We deconstruct a 3-D seismic volume into a large number of cubes, which function as input data for the neural network. Using existing seismic interpretations as labels, the neural network learns to predict the output. By predicting the output of each cube, we can reconstruct the result volume, thereby providing a full interpretation of contained fault sets and stratigraphic horizons.

3. DEEP LEARNING

Machine learning describes a set of algorithms and models, which learn to perform a specific task without explicit instructions. While classic machine learning relies on features engineered for a specific task (e.g. edges for fault detection), deep learning models derive features implicitly as part of the training. To learn these features, deep neural networks typically require a large number of examples, either labelled for supervised learning or unlabelled for unsupervised learning (e.g. *LeCun et al., 2015*). To generate these examples, we interpret different geological structures (faults, salt bodies and a horizon) in a subset of our data and subsequently divide this subset into a large number of patches, i.e. squares in 2-D and cubes in 3-D (Fig. 1). Next, we split all of these examples into one set for training and one for validation and one for testing. The training set is used to train the model to predict the labels. The validation set is used for an evaluation of the trained model, which allows us to fine-tune hyperparameters during training. The test set is used for an unbiased evaluation of the fine-tuned model.

Deep learning offers a variety of different types of models depending on the application. The basic building blocks of these models are however the same. They include: (1) dense, (2) convolutional, (3)

pooling, (4) batch normalisation and (5) dropout layers. A dense (or fully-connected) layer is commonly used for classification, as it connects every input (e.g. features) to every output (e.g. classes). A dense layer consists of artificial neurons, non-linear activation functions (e.g. Rectified Linear Units or ReLu, which set values below a certain threshold to a lower bound (zero), i.e. $f(x)=\max(0,x)$; for more details see *Nair and Hinton, 2010*). These values have previously been multiplied by weights, which we fit during training. Based on the given features, this process allows dense layers to learn which class to prioritize. A convolutional layer is typically used for feature extraction converting images into activation maps highlighting where certain visual features (e.g. edges) occur in the image. A convolutional layer consists of a set of trainable filters, which generate activation maps when convolved with the input image. A key point is that these filters are flexible, as we train them to detect visual features important to the task at hand. Another important point is that convolution preserves the spatial structure of the image. A pooling layer is typically used for downsampling between convolutions. This layer slides a filter across the image and passes the maximum (or another measure) within the filter to the next layer. Downsampling allows us to process data at all scales irrespective of the size of the convolutional layer. Batch normalization is a technique to normalize activations (zero-mean and unit standard deviation) in intermediate layers of neural networks. Although the exact reason is still investigated (*e.g. Bjorck et al., 2018, Santurkar et al., 2018*), batch normalisation tends to accelerate convergence during training. A dropout layer is used to prevent neural networks from overfitting the training data and thus generalizing poorly. The basic idea is to randomly drop units from the network. This prevents co-adaptation (different units of the network adapting similar weights) and provides regularization (lower the generalization error) (*Srivastava et al., 2014*).

Using these building blocks, we construct two types of convolutional neural networks in this study. The first type consists of several convolutional and max pooling layers, which downsample an image, followed by a couple of dense layers, which classify it. These models are most commonly employed to

predict the label of an image, e.g. whether a certain object is in the image or not. The second type (U-Net) consists of two paths: one for down and one for upsampling (e.g. Long et al., 2015, Ronneberger et al., 2015). Each path consists of convolutional, max pooling, batch normalization and dropout layers as well as so-called skip connections, i.e. extra connections between nodes in different layers of a network that skip one or more layers (Orhan and Pitkov, 2018). In contrast to the first type, these models predict the label of each pixel of an image, allowing a much faster pixel by pixel prediction of images. We apply both of these types of models to compare their accuracy and speed as well as highlight advantages and disadvantages during training and application.

We can think of the training of these models as an optimization, which aims to minimize the difference between the predicted and the actual labels. This difference is calculated using a loss function (e.g. mean squared error, cross-entropy). Optimizers (e.g. stochastic gradient descent, adaptive moment estimation) allow us to minimize the loss function by adjusting the model weights via backpropagation (Rumelhart et al., 1986). We can monitor the optimization by tracking several metrics (e.g. loss, accuracy) during training. These *learning curves* are useful for hyperparameter tuning and to decide when training has been completed. Once training is complete, we can determine the performance of the model on the test set and apply it to our data set. Our code, tutorials and examples are freely available at:

https://github.com/thilowrona/seismic_deep_learning.

On the technical side, we wrote our code in Python 3 using open source libraries, such as Segyio, NumPy (Van der Walt et al., 2011), Matplotlib (Hunter, 2007), Tensorflow (Abadi et al., 2016), and Keras (Chollet, 2015) (see supplementary material for more details). We label training data with a graphics editor (Adobe Illustrator) for the fault and salt interpretation and with a seismic interpretation software (Petrel) for the horizon interpretation. Once published, our code, tutorials and examples will be freely available at: <https://github.com/thilowrona>.

4. FAULTS

Our first example focuses on mapping faults, i.e. structural discontinuities that form when the crust is deformed in a brittle way. First, we approach this task as a binary classification problem, where we train our models to predict if there is a fault at each point of the section or not. We generate our training examples by manually labelling all faults in ten 2-D seismic sections (2801×8096 samples) of the northern North Sea (Fig. 2A, B). Next, we extract squares (128×128 samples) from eight of these sections until we have 40,000 examples with a fault at the centre (label: 1) and 40,000 without (label: 0). Balancing these examples across classes makes it easier to train models. Next, we extract 10,000 from each of the remaining two seismic sections for validation (10%) and testing (10%). We use the training set to fit our model; a 2-D convolutional neural network consisting of three 2-D convolutional layers followed by max pooling and two dense layers (see Model 1A). In total, the model has 8,413,442 trainable parameters. We train the model over 10 epochs (one epoch refers one cycle through the entire training set) using 2500 batches consisting of 32 labelled training examples each (one batch refers to one set of training examples to work through before updating model weights). We use a binary cross-entropy loss function, an adaptive learning rate optimizer and a softmax activation for two classes. The training takes 16 minutes on our desktop machine with GPU support (see Appendix for specifications).

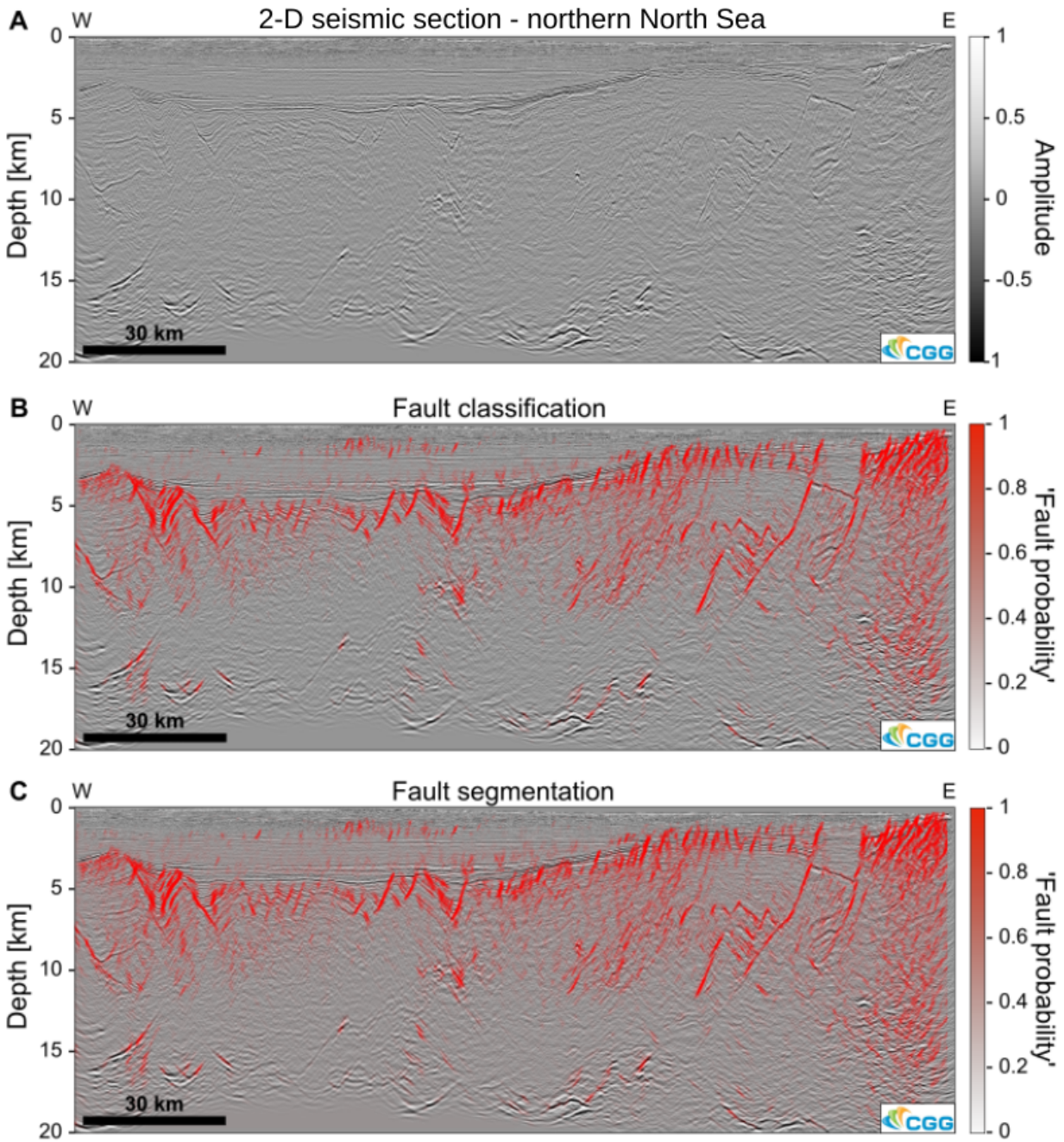


Figure 2. Automated fault interpretation in 2-D seismic section with 2-D convolutional neural networks. A) Seismic section of the northern North Sea rift. B) Seismic section with 'fault probability' (not true probability) prediction from 2-D convolutional neural network used for binary classification (duration of prediction: 55 minutes). C) Seismic section with fault segments predicted by U-Net type 2-D convolutional neural network used for semantic segmentation (duration of prediction: 5 seconds). Seismic data courtesy of CCG.

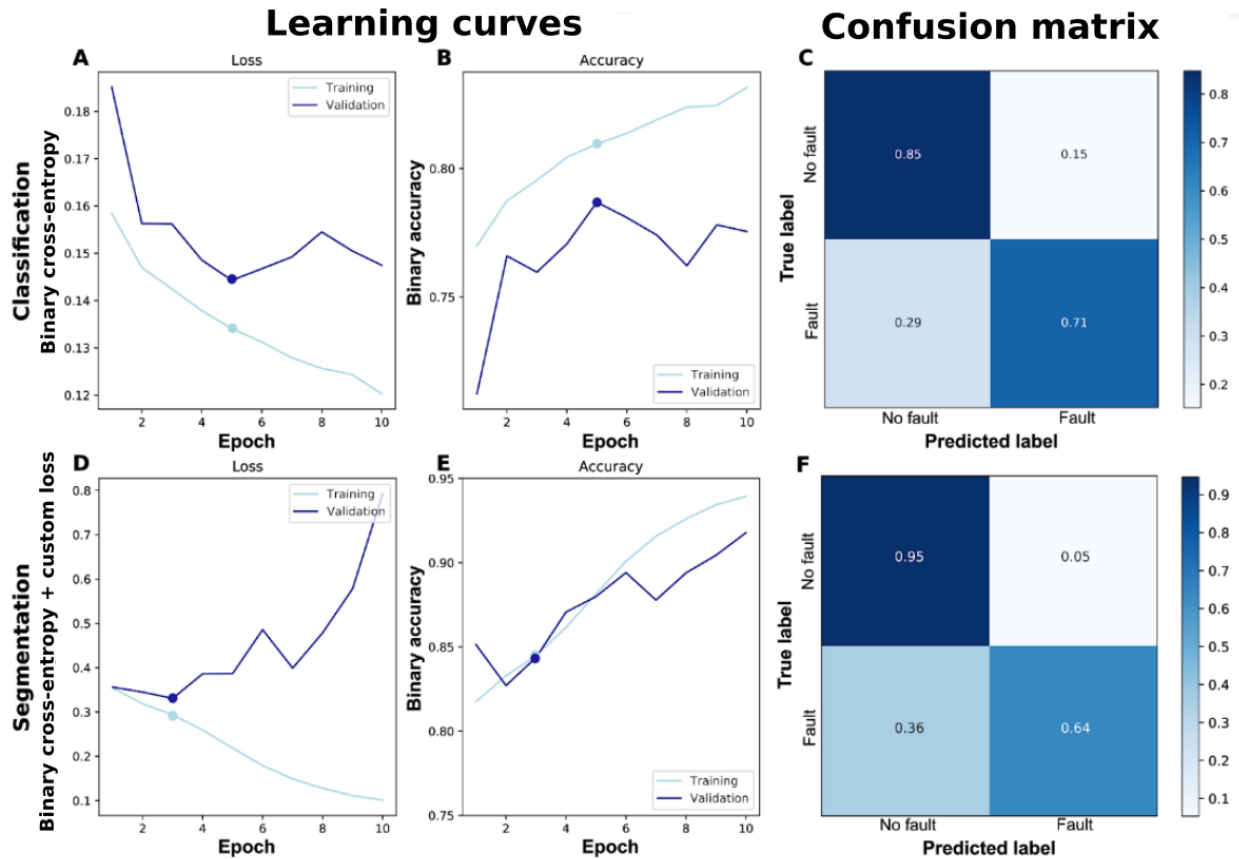


Figure 3. Learning curves and confusion matrices showing training results of classification (A, B, and C) and segmentation models (D, E, and F) for fault interpretation. A decrease in loss and increase in accuracy with time (epochs) indicates training progress. Dots indicate the final model (i.e. where validation loss was minimal). The confusion matrix cross-plots predicted and true labels, so that high values on the diagonal indicate high accuracy for the classes. Note that the relatively large fraction of false positives is somewhat by design, as we would rather find more faults than missing some (e.g. for CO₂ storage).

During training, the loss (mean squared error) decreases from 0.16 to 0.12 on the training set and from 0.19 to 0.14 on the validation set (Fig. 3A), while the binary accuracy increases from 0.77 to 0.83 on the training and from 0.71 to 0.79 on the validation set (Fig. 3B). We save the model after epoch 5, when the accuracy is highest and the loss lowest on the validation set.

The final model predicts 85% true positives (fault), 15% false positives, 71% true negatives (no fault) and 29% false negatives (Fig. 3C). The model reaches a precision of 0.79, a recall of 0.79, a F1-score of 0.75 with a support of 10 000 on the test set (Tab. 1). Precision describes the ability of a model to predict classes correctly, recall (or sensitivity) describes the ability of a model to find all

examples of a class, F1 score is an equally weighted harmonic mean of precision and recall, and support is the number of examples tested. Since these values are relatively high, it makes sense to apply the model to an unseen seismic section.

Model	Target	Method	Precision	Recall	F1-score	Support
Model 1A	Faults	Classification	0.79	0.79	0.75	10,000
Model 1B	Faults	Segmentation	0.83	0.82	0.76	10,000
Model 2	Salt bodies	Classification	0.91	0.91	0.91	10,000
Model 3	Horizon	Classification	0.92	0.91	0.88	10,000

Table 1. Model metrics for fault interpretation calculated on a test set at the end of training.

Applying the model to an unseen 2-D seismic section of the northern North Sea takes 120 minutes on our machine, because the model has to predict the label of each of the 21,983,584 pixels of the section. Overall, the model predicts all major faults in the upper crust, but also labels some steeply-inclined stratigraphic reflections as faults (Fig. 2A,B). The ‘true’ faults show typical geometries including: (1) plane, (2) listric, and (3) kinked surfaces (Fig. 2C) (*Bell et al., 2014*). The model is also able to predict fault intersections, such as criss-crossing and splaying faults as well as associated structures, such as en échelon faults and rotated fault blocks.

Next, we approach this task as a semantic segmentation problem, where we train our model to predict a pixel-wise label of the image. Pixel values of 1 indicate a fault and 0 no fault. We can again use our labelled seismic section from the northern North Sea to extract 80 000 squares (128×128 samples) together with the corresponding labels (128×128 samples). Next, we split these pairwise examples into training (80%), validation (10%) and test set (10%). We use the training set to fit an U-Net; a 2-D convolutional neural network consisting of a contracting and an expanding path. These models excel at segmentation tasks, as they combine pixel-wise classification and localisation. Our U-Net is symmetric with each side consisting of thirteen convolutional layers each followed by a batch normalisation, max

pooling and dropout layer (see Model 1B). In total, the model has 31,042,369 trainable parameters. We train the model over 10 epochs using 2500 batches consisting of 32 labeled training examples each. We use a binary cross-entropy combined with a custom loss function (normalized false positives + normalized false negatives) and an adaptive learning rate optimizer. We chose this loss function, because it minimizes both false negative and false positive predictions for imbalanced classes (e.g. fault vs no fault). The training takes 2 hours 16 minutes on our desktop machine with GPU support (see Appendix for specifications).

During training, the loss decreases from 0.35 to 0.29 on the training set and from 0.36 to 0.33 on the validation set (Fig. 3D), while the binary accuracy increases from 0.82 to 0.84 on the training and from 0.82 to 0.84 on the validation set (Fig. 3B). We save the model after epoch 3, when the loss is lowest on the validation set.

The final model predicts 64% true positives (fault), 36% false positives, 95% true negatives (no fault) and 5% false negatives (Fig. 3C). The model reaches a precision of 0.83, a recall of 0.82, a F1-score of 0.76 with a support of 10,000 on the test set (Tab. 1). All these values are reasonably high, so it makes sense to apply the model to the entire seismic section.

Applying the model to an unseen 2-D seismic section of the northern North Sea takes only 5 seconds on our machine, because the model simultaneously predicts 128×128 of the 21,983,584 pixels for each batch of the section. The model is thus able to predict the faults just as well as the previous model.

5. SALT BODIES

Our second example focuses on mapping salt bodies in three dimensions. Given that salt forms complex bodies, which are difficult to label in 3-D as segmentation masks, we approach this task as a binary classification, where we train a 3-D convolutional neural network using 3-D seismic reflection

data. We label salt on 5 seismic inlines and 5 crosslines to generate a total of 1,000,000 examples in the form of small cubes ($16 \times 16 \times 16$ samples). These examples are already relatively balanced across the two classes (salt, no salt) in this dataset. Next, we split these examples into exclusive training (8 lines, 80%), validation (1 line, 10%) and test set (1 line, 10%). The training set is used to fit our model: a 3-D convolutional neural network consisting of three 3-D convolutional, batch normalization, 3-D max pooling and dropout layers (each) followed by two dense layers (see Model 2). In total, the model has 333,794 trainable parameters. We train the model over 10 epochs using 25,000 batches consisting of 32 labelled training examples each. We use a binary cross entropy loss function, an adaptive learning rate optimizer and a softmax activation for two classes. The training took about 16 minutes on our desktop machine with GPU support (see Appendix for specifications).

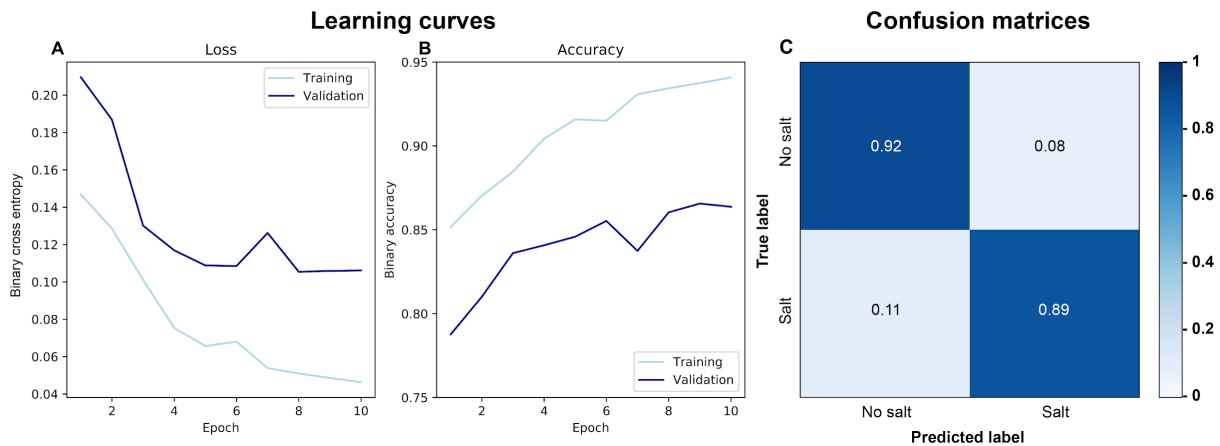


Figure 4. Learning curves and confusion matrices showing training results of classification model for salt interpretation. A decrease in loss (A) and increase in accuracy (B) with time (epochs) indicates training progress. The final model is the one with the lowest validation loss (i.e. after 10 epochs). The confusion matrix cross-plots predicted and true labels, so that high values on the diagonal indicate high accuracy for the classes.

During training, the loss (mean squared error) decreases from 0.58 to 0.17 on the training set and from 0.9 to 0.22 on the validation set, and the binary accuracy increases from 0.81 to 0.93 on the training set and from 0.67 to 0.89 on the validation set (Fig. 4A,B). Constant losses and accuracies with time indicate that training has been completed after 10 epochs.

The final model predicts 89% true positives (salt), 11% false positives, 92% true negatives (no salt) and 8% false negatives (Fig. 4C). The model achieves a precision of 0.91, a recall of 0.91, a F1-score of 0.91 with a support of 10,000 on the test set (Tab. 1). These values give us confidence that we can apply the model.

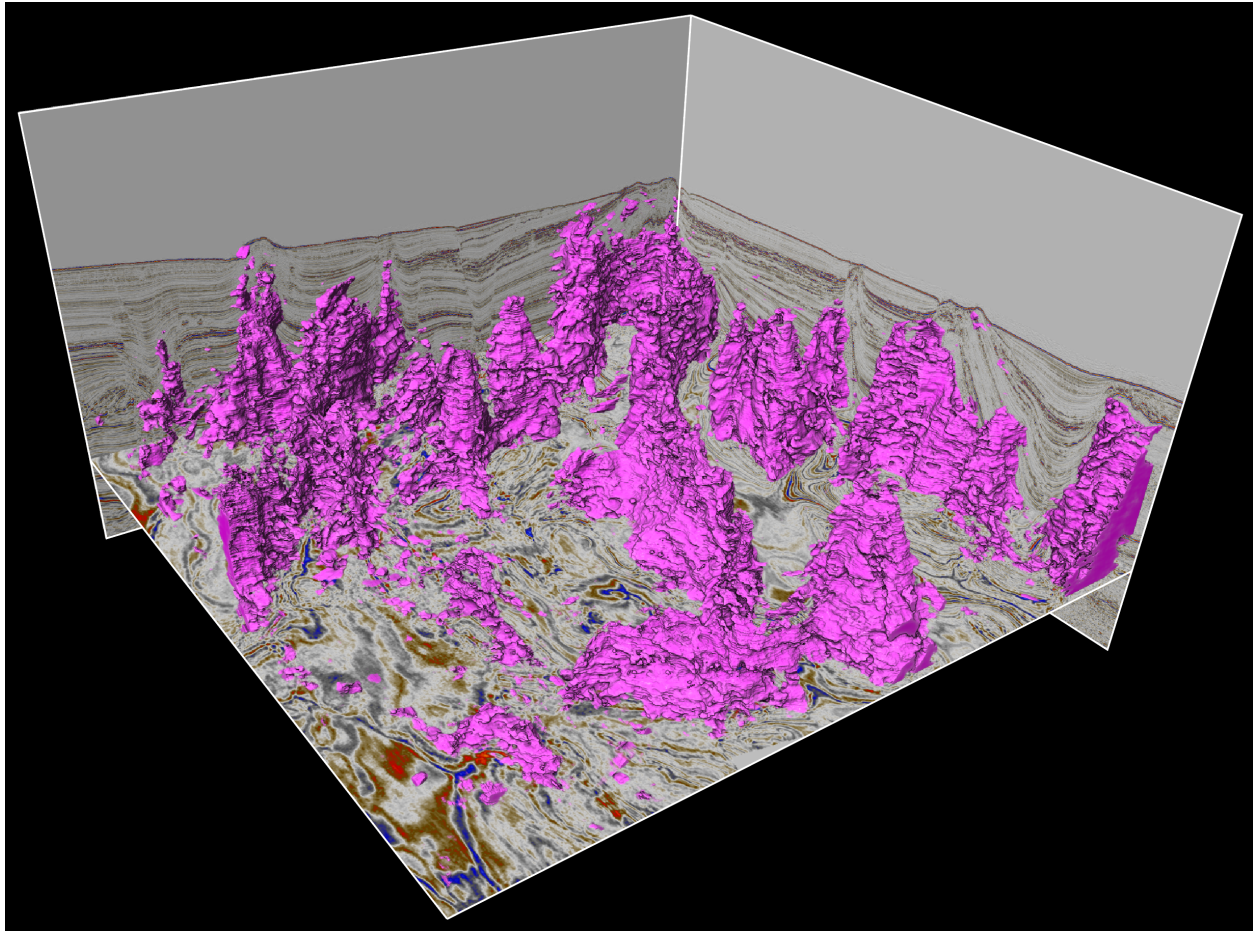


Figure 5: Salt diapirs mapped in 3-D seismic reflection data with a 3-D deep convolutional neural network.

Applying the model to the entire 3-D seismic volume takes 3 hours 12 minutes on our machine, as the model has to predict the label of each of the 728,191,488 pixels of the volume. Overall, the model is able to predict a number of typical 3-D structures, such as salt walls and diapirs (Fig. 5).

6. HORIZONS

Our third example focuses on mapping a seismic horizon in 3-D seismic reflection data from the northern North Sea. We approach this problem as a binary classification one, using a 3-D convolutional neural network (see Model 3). To generate examples, we map a horizon in one area of the dataset using a seismic interpretation software. This provides us with 100,000 examples in the form of small cubes ($32 \times 32 \times 32$ samples) labelled by 1 if they belong to the horizon and 0 if they do not. Next, we sort these examples into exclusive sets: one for training (80%) and one for validation (10%) and one for testing (10%). We use the training set to fit our model: a 3-D convolutional neural network consisting of three 3-D convolutional, batch normalization, 3-D max pooling and dropout layers (each) followed by two dense layers (see Model 3). In total, the model has 2,168,802 trainable parameters. We train our model over 10 epochs using 2500 batch consisting of 32 labelled training examples each. We use a binary cross entropy loss function, an adaptive learning rate optimizer and a softmax activation for two classes. The training took about 22 minutes on our desktop machine with GPU support (see Appendix for specifications).

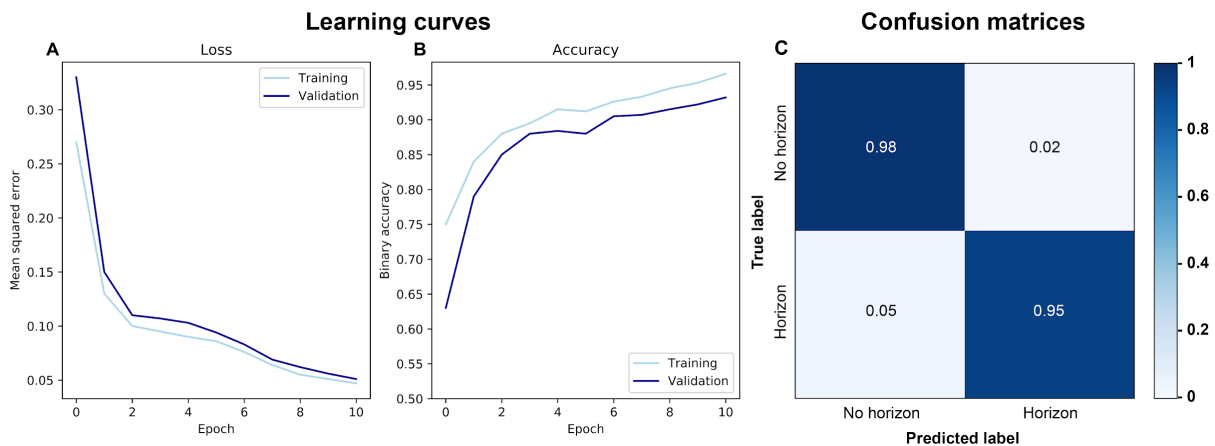


Figure 6. Learning curves and confusion matrices showing training results of classification model for horizon interpretation. A decrease in loss (A) and increase in accuracy (B) with time (epochs) indicates training progress. The final model is the one with the lowest validation loss (i.e. after 10 epochs). The confusion matrix cross-plots predicted and true labels, so that high values on the diagonal indicate high accuracies for the classes.

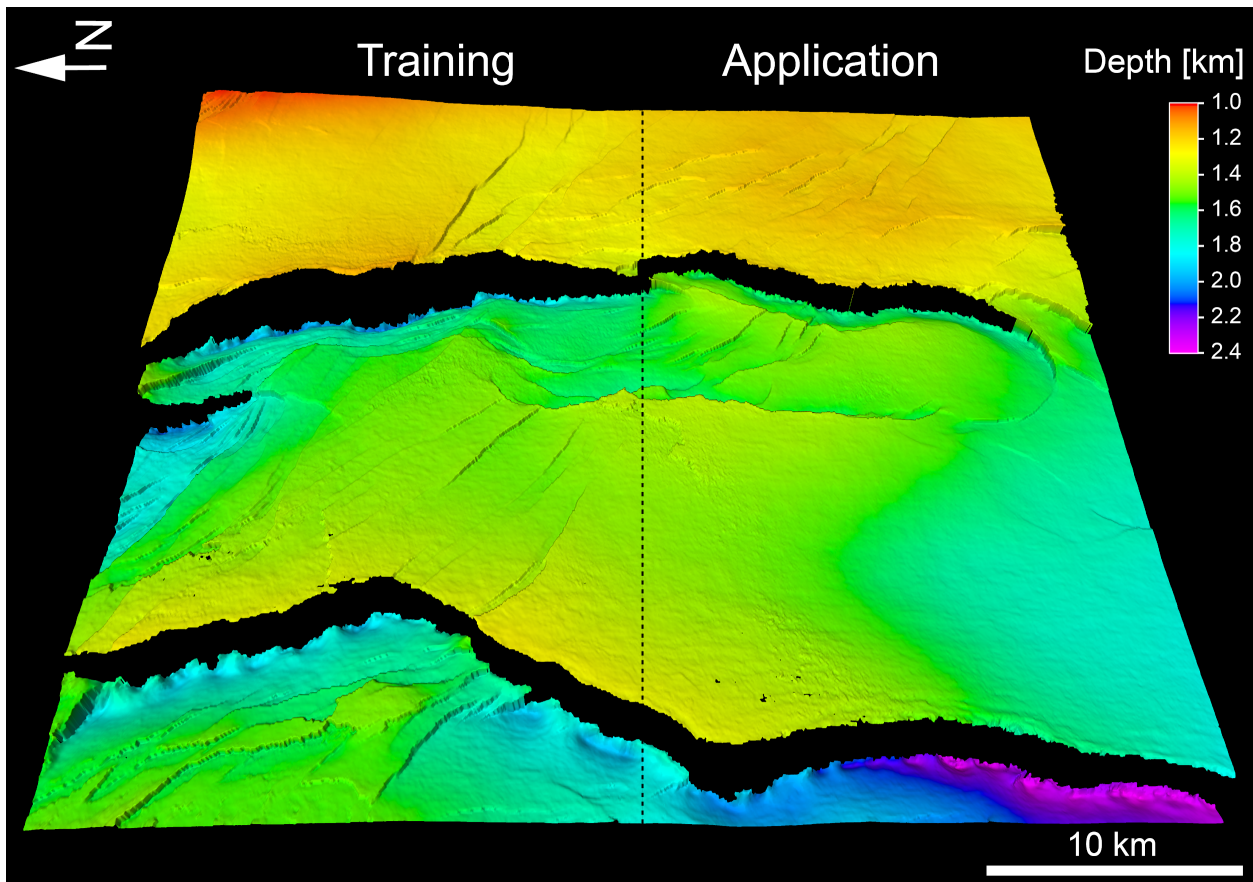


Figure 7: Geological horizon mapped in 3-D seismic reflection data using a deep 3-D convolutional neural network.

Applying the model to the right hand side of Figure 7 takes 6 hours 25 minutes, because the model has to predict the label of each of the 1,308,400,753 pixels. A direct comparison between the training data and the predictions shows that the model is able to map a continuous horizon with the same geological structures (large and small normal faults) on unseen data.

7. DISCUSSION

Our models highlight that we can use deep learning for typical seismic interpretation tasks, such as fault, salt and horizon mapping in two and three dimensions (Figs. 2, 5, 7). Using labelled training data, we can train a set of 2-D and 3-D convolutional neural networks to perform these tasks in less than 5

seconds. This allows us to map 2-D and 3-D geological structures (e.g. faults, geobodies and horizons) in great detail, over vast areas, and at high accuracy. This has far-reaching implications. For instance, if we are able to map entire rifts and rift systems in 3-D seismic reflection data, we could compare the architecture of these systems to 3-D geodynamic models, which, in turn, helps us understand the rheology of the lithosphere and the spatial evolution of fault rift systems. Mapping every stratigraphic horizon in these systems would help us reconstruct their temporal evolution in much greater detail than previously possible. While this example focuses on tectonic faults in continental rifts, a similar approach is feasible in different disciplines working with 2-D and 3-D seismic reflection data, whether it concerns the study of submarine channels, magmatic intrusions or salt tectonics.

In the following, we discuss: (1) the potential of deep learning in geophysics, (2) how generalisable these methods are to other problems in geophysics, and (3) what are the challenges and few remedial strategies. We think that there are three main reasons regarding the suitability of deep learning techniques for analysis of 3-D geophysical data. First, geophysical datasets are large (GBs to TBs); a key requirement for the implicit feature extraction of deep learning (*Chen & Lin, 2014*). Second, we already have large volumes of historical training data labelled by expert geologists and if necessary, we can label even more training data. Third, the translation invariance of convolutional neural networks has made deep learning very effective in analyzing images; a property we too can exploit in geophysics.

With deep learning transforming the way we analyze data, we can ask ourselves how transferable these methods are to other problems in geophysics. First, it is worth noting that deep learning does not require feature engineering and is thus not limited to a specific type of geophysical data. Second, the models presented here are still relatively simple in terms of architecture, so that users can easily tweak them to adapt the workflow to their problem. Moreover, it is possible to optimize the hyperparameters of these models to further increase accuracy and speed. To encourage these developments, we will make our

code freely available on Github: <https://github.com/thilowrona>. Third, we can apply our workflow to map a variety of geological structures (e.g. volcanoes, channels or craters) in different types of geophysical data (radar, magnetic, gravity). Finally, we can explore applications of deep learning in other tasks in seismic interpretation. Uncertainty quantification, for example, is extremely difficult in manual seismic interpretations. While our models only predict a proxy for the probability of detecting a certain geological structure (e.g. Fig. 2B, C), we can envision incorporating uncertainty in the training data and architecture of these models. Accurate predictions of subsurface rock properties with uncertainty are extremely important to risk evaluations of CO₂ storage sites and geothermal reservoirs. Bayesian techniques like Variational Inference for deep neural networks can be used to approximate the posterior predictive distribution. These are optimisation based techniques that are much faster and tractable than full Markov Chain Monte Carlo methods, although they are known to under-estimate the uncertainty bounds (*e.g. Blei et al., 2017*).

While these techniques are very powerful, it is also worth highlighting some of the challenges (and potential remedies) associated with deep learning. For example, pixel-wise predictions are more time-consuming with classification instead of segmentation models. Labelling training data for segmentation models, in particular in 3-D, is challenging and time-consuming, too. A masked loss function allows training with 3-D models and data using 1-D- and 2-D labels (*see Tschannen et al., 2020 for more details*). This function restricts the loss calculation during training using a mask, which is one where a label is available and zero where it is absent.

Another challenge is determining the optimal number of training examples. While we found that around 100,000 examples provide a good trade-off between prediction accuracy and training time, this point is worth investigating further. When labels are only available for a small subset, it is possible to increase the size of the training set using data augmentation techniques. When there are no labels

available, we (as a user or community) have to spend time labelling data manually. Moreover, we can explore unsupervised learning methods (e.g. autoencoders), which do not require labels.

Another issue of deep learning is overfitting. Deep neural networks can provide accurate predictions on the training set, but fail to generalize on new data (i.e. overfitting) (*Domingos, 2012*). To identify overfitting, we can compare model predictions between the training and validation set. Moreover, it is advisable to start with a simple model and successively increase complexity as necessary. Furthermore, regularization techniques, such as dropout (*Srivastava et al., 2014*), can help us limit overfitting.

Another challenge is the quality and amount of training data. Supervised machine learning, for example, requires high quality labelled training data representative of the entire data set. Moreover, deep learning requires large volumes of this data. When labels are available for a small subset, it is possible to increase the size of the training set using data augmentation techniques. When there are no labels available, we (as a user or community) have to spend time labelling data manually. Alternatively, we can explore unsupervised learning methods (e.g. autoencoders), which do not require labels.

At last, it is worth mentioning that neural networks are still, to a large degree, a black box, offering only sporadic insights into their inner workings. So while these models can perform many tasks at high accuracy and speed, we are just beginning to understand which features these models use and how they make decisions, so interpretability remains a key focus area of machine learning research (*e.g. Ribeiro et al., 2016; Lundberg and Lee, 2017; Molnar, 2018*).

8. CONCLUSIONS

Here, we demonstrate how to use deep learning to analyse geophysical data sets at high accuracy and limited time. We show that deep convolutional neural networks are able to perform key tasks, such as (1) mapping tectonic faults, (2) extracting geobodies, and (3) tracing stratigraphic horizons. As such, this study highlights new ways to efficiently analyze large volumes of geophysical data using freely available methods. To summarize, this study shows that deep learning has the potential to drastically increase the speed and accuracy of geophysical data analyses.

ACKNOWLEDGEMENTS

We would like to thank the journal editors (Yongyi Li, John T. Etgen and Erika Gasperikova) and the reviewers (Rocky Roden, Xinming Wu, two anonymous) for their extremely constructive and helpful comments, which significantly improved the manuscript. Furthermore, we thank The Norwegian Academy of Science and Letters (VISTA), The University of Bergen and The Initiative and Networking Fund of the Helmholtz Association through the project “Advanced Earth System Modelling Capacity (ESM) and The Geo.X Network for supporting this work. We are grateful to CGG, in particular Stein Åsheim, for the permission to present this data and publish this work. We thank Schlumberger for providing the software Petrel 2019© and Leo Zijerveld for IT support.

REFERENCES

- Abadi, M., Barham, P., Chen, J., Chen, Z., Davis, A., Dean, J., et al. (2016). TensorFlow: A system for large-scale machine learning. In *12th Symposium on Operating Systems Design and Implementation* (pp. 265–283). Retrieved from <http://arxiv.org/abs/1605.08695>
- Araya-Polo, M., Dahlke, T., Frogner, C., Zhang, C., Poggio, T., & Hohl, D. (2017). Automated fault detection without seismic processing. *The Leading Edge*, 36(3), 208–214. <https://doi.org/10.1190/tle36030208.1>
- Bell, R. E., Jackson, C. A. L., Whipp, P. S., & Clements, B. (2014). Strain migration during multiphase extension: Observations from the northern North Sea. *Tectonics*, 33(10), 1936–1963. <https://doi.org/10.1002/2014tc003551>

- Bjorck, J., Gomes, C., Selman, B., & Weinberger, K. Q. (2018). Understanding batch normalization. In *Advances in Neural Information Processing Systems*.
- Blei, D. M., Kucukelbir, A., & McAuliffe, J. D. (2017). Variational Inference: A Review for Statisticians. *Journal of the American Statistical Association*. <https://doi.org/10.1080/01621459.2017.1285773>
- Bond, C. E., Lunn, R. J., Shipton, Z. K., & Lunn, A. D. (2012). What makes an expert effective at interpreting seismic images? *Geology*, 40(1), 75–78. <https://doi.org/10.1130/g32375.1>
- Butler, K. T., Davies, D. W., Cartwright, H., Isayev, O., & Walsh, A. (2018). Machine learning for molecular and materials science. *Nature*. <https://doi.org/10.1038/s41586-018-0337-2>
- Carleo, G., & Troyer, M. (2017). Solving the quantum many-body problem with artificial neural networks. *Science*, 355(6325), 602–606. <https://doi.org/10.1126/science.aag2302>
- Cartwright, J., & Huuse, M. (2005). 3D seismic technology: the geological ‘Hubble.’ *Basin Research*, 17(1), 1–20. <https://doi.org/10.1111/j.1365-2117.2005.00252.x>
- Chen, X. W., & Lin, X. (2014). Big data deep learning: Challenges and perspectives. *IEEE Access*. <https://doi.org/10.1109/ACCESS.2014.2325029>
- Chollet, F. (2015). Keras: The Python Deep Learning library. Keras.Io.
- Coléou, T., Poupon, M., & Azbel, K. (2003). Unsupervised seismic facies classification: A review and comparison of techniques and implementation. *The Leading Edge*, 22(10), 942–953. <https://doi.org/10.1190/1.1623635>
- Domingos, P. (2012). A few useful things to know about machine learning. *Communications of the ACM*. <https://doi.org/10.1145/2347736.2347755>
- Esteva, A., Kuprel, B., Novoa, R. A., Ko, J., Swetter, S. M., Blau, H. M., & Thrun, S. (2017). Dermatologist-level classification of skin cancer with deep neural networks. *Nature*, 542(7639), 115. Retrieved from <https://www.nature.com/articles/nature21056.pdf>
- Guillen, P., Larrazabal*, G., González, G., Bumber, D., & Vilalta, R. (2015). Supervised learning to detect salt body. In *SEG Technical Program Expanded Abstracts 2015* (pp. 1826–1829). Society of Exploration Geophysicists. <https://doi.org/10.1190/segam2015-5931401.1>
- Hunter, J. D. (2007). Matplotlib: A 2D graphics environment. *Computing in Science and Engineering*. <https://doi.org/10.1109/MCSE.2007.55>
- LeCun, Y., Bengio, Y., & Hinton, G. (2015). Deep learning. *Nature*, 521(7553), 436–444. <https://doi.org/10.1038/nature14539>
- Liu, Z., Cao, J., Lu, Y., Chen, S., & Liu, J. (2019). A seismic facies classification method based on the convolutional neural network and the probabilistic framework for seismic attributes and spatial classification. *Interpretation*. <https://doi.org/10.1190/int-2018-0238.1>

- Long, J., Shelhamer, E., & Darrell, T. (2015). Fully convolutional networks for semantic segmentation. In Proceedings of the IEEE Computer Society Conference on Computer Vision and Pattern Recognition. <https://doi.org/10.1109/CVPR.2015.7298965>
- Lundberg, S. M., & Lee, S. I. (2017). A unified approach to interpreting model predictions. In Advances in Neural Information Processing Systems.
- de Matos, M. C., Osorio, P. L., & Johann, P. R. (2007). Unsupervised seismic facies analysis using wavelet transform and self-organizing maps. *Geophysics*, 72(1), P9–P21. <https://doi.org/10.1190/1.2392789>
- Molnar, C. (2018). Interpretable Machine Learning. <https://Christophm.Github.io/Interpretable-MI-Book/>. <https://doi.org/10.1007/978-1-4419-0790-5>
- Nair, V., & Hinton, G. E. (2010). Rectified linear units improve Restricted Boltzmann machines. In ICML 2010 - Proceedings, 27th International Conference on Machine Learning.
- Orhan, A. E., & Pitkow, X. (2018). Skip connections eliminate singularities. In 6th International Conference on Learning Representations, ICLR 2018 - Conference Track Proceedings.
- Peters, B., Haber, E., & Granek, J. (2019). Neural networks for geophysicists and their application to seismic data interpretation. *Leading Edge*. <https://doi.org/10.1190/tle38070534.1>
- Qian, F., Yin, M., Liu, X.-Y., Wang, Y.-J., Lu, C., & Hu, G.-M. (2018). Unsupervised seismic facies analysis via deep convolutional autoencoders. *Geophysics*, 83(3), A39–A43. <https://doi.org/10.1190/geo2017-0524.1>
- Ribeiro, M. T., Singh, S., & Guestrin, C. (2016). “Why should i trust you?” Explaining the predictions of any classifier. In Proceedings of the ACM SIGKDD International Conference on Knowledge Discovery and Data Mining. <https://doi.org/10.1145/2939672.2939778>
- Ronneberger, O., Fischer, P., & Brox, T. (2015). U-net: Convolutional networks for biomedical image segmentation. In Lecture Notes in Computer Science (including subseries Lecture Notes in Artificial Intelligence and Lecture Notes in Bioinformatics). https://doi.org/10.1007/978-3-319-24574-4_28
- Rumelhart, D. E., Hinton, G. E., & Williams, R. J. (1986). Learning representations by back-propagating errors. *Nature*. <https://doi.org/10.1038/323533a0>
- Santurkar, S., Tsipras, D., Ilyas, A., & Madry, A. (2018). How does batch normalization help optimization? In Advances in Neural Information Processing Systems.
- Srivastava, N., Hinton, G., Krizhevsky, A., Sutskever, I., & Salakhutdinov, R. (2014). Dropout: A simple way to prevent neural networks from overfitting. *Journal of Machine Learning Research*.
- Tschannen, V., Delescluse, M., Ettrich, N., & Keuper, J. (2020). Extracting horizon surfaces from 3D seismic data using deep learning. *GEOPHYSICS*. <https://doi.org/10.1190/geo2019-0569.1>

Waldeland, A. U., Jensen, A. C., Gelius, L.-J., & Solberg, A. H. S. (2018). Convolutional neural networks for automated seismic interpretation. *The Leading Edge*, 37(7), 529–537. Retrieved from <https://library.seg.org/doi/pdf/10.1190/tle37070529.1>

Van Der Walt, S., Colbert, S. C., & Varoquaux, G. (2011). The NumPy array: A structure for efficient numerical computation. *Computing in Science and Engineering*. <https://doi.org/10.1109/MCSE.2011.37>

Wrona, T., Pan, I., Gawthorpe, R. L., & Fossen, H. (2018). Seismic facies analysis using machine learning. *Geophysics*, 83(5), O83–O95. <https://doi.org/10.1190/Geo2017-0595.1>

Wu, X. M., & Fomel, S. (2018). Automatic fault interpretation with optimal surface voting. *Geophysics*, 83(5), O67–O82. <https://doi.org/10.1190/Geo2018-0115.1>

Zhang, C., Frogner, C., Araya-Polo, M., & Hohl, D. (2014). Machine-learning Based Automated Fault Detection in Seismic Traces. In 76th EAGE Conference and Exhibition 2014.

SUPPLEMENTARY MATERIAL

3-D SEISMIC REFLECTION DATA

Seismic acquisition: This seismic cube was acquired with a G-Gun array consisting of 3 subarrays with a source array depth of 6-9 m; a source length of 16-18 m; a SP interval of 18.75 m; source separation of 37.5 m; a volume of 4550 in³ and an air pressure of 2000 psi. The streamer consisted of 12 up to 8 km long cables with 636 channels each; a cable separation of 75 m and group spacing of 12.5 m; depths of 7-50 m covering offsets of 150-8100 m. The data was recorded with a 2 ms sample interval; 9000 ms recording length; a low cut filter (2Hz-6db/oct) and high cut (200 Hz-370 db/oct) filter.

Seismic processing: The seismic data was processed in 90 steps including: divergence compensation; low cut filter (1.5 Hz, 2.5 Hz); noise attenuation (e.g. swell, direct wave); spatial anti-aliasing filter (12.5 m group interval); direct wave attenuation; source de-signature; de-spike; time-variant high cut filter; receiver motion correction and de-ghosting; FK filter; cold water and tidal statics; multiple modelling with adaptive subtraction; Tau-P mute; Radon de-multiple; far angle destriping; multiple attenuation;

binning (75 m interval, 107 offset planes); acquisition hole infill; 5-D regularization; 3-D true amplitude Kirchhoff pre-stack time migration; residual move-out correction; Linear FL Radon; full offset stack with time-variant inner and out mute; acquisition footprint removal; crossline K filter; residual de-stripping and dynamic Q-compensation. The seismic volume was zero phase processed with SEG normal polarity.

MACHINE LEARNING

The models used in this study were developed, trained and applied using a series of scripts implemented Python 3 and built on top of the several existing packages (e.g. Segyio, NumPy, Matplotlib, Tensorflow and Keras). A typical supervised machine learning workflow consists of these components: (1) load data and labels, (2) prepare data, (3) set up model, (4) train model, (5) tune model, and (6) apply model (e.g. Wrona et al, 2018). First, we typically load seismic sections or volumes into [NumPy](#) arrays using the package [Segyio](#). We load labelled sections saved as images using [Matplotlib](#). Second, we standardize our seismic data (mean=0, variance=1) using [Scikit-learn](#). Then, we either store training and validation data in Numpy arrays or stream the data using data generators from [Keras](#). Third, we set up our models (listed below) using Keras, a high-level neural networks API built on top of [Tensorflow](#). We use tensorflow-gpu. We initialize model weights with Keras' default settings (e.g. kernel initializer is glorot uniform). Fourth, we train our models using these loss functions:

$$\textit{Mean squared error: } MSE = \frac{1}{n} \sum_{i=1}^n (Y_i - \hat{Y}_i)^2$$

$$\textit{Binary cross-entropy: } BCE = \frac{1}{n} \sum_{i=1}^n Y * \log(\hat{Y}_i) + (1 - Y) * \log(1 - \hat{Y}_i)$$

$$\textit{Custom loss: } CL = FP/P + FN/N$$

where n is the number of samples, Y are the true labels and \hat{Y} are the predicted labels (as well as an adaptive learning rate optimizer), FP are the false positives, P all positives, FN are the false negatives and N are all negatives. Fifth, we manually tune hyperparameters based on these metrics:

Binary accuracy: $ACC = \frac{TP+TN}{FP+FN}$

Precision: $Pre = \frac{TP}{TP+FP}$

Recall: $Rec = \frac{TP}{TP+FN}$

F1-score: $F1 = 2 * \frac{Pre*Rec}{Pre+Rec}$

IOU score: $IOU = \frac{TP}{TP+FP+FN}$

where TP - true positives, TN - true negatives, FP - false positives, and FN false negatives. Sixth, we apply our models to entire data sets by iterating through each point.

Model 1A

Layer	Output Shape	Param #
conv2d	(None, 128, 128, 16)	160
max_pooling2d	(None, 64, 64, 16)	0
conv2d_1	(None, 64, 64, 32)	4640
max_pooling2d_1	(None, 32, 32, 32)	0
conv2d_2	(None, 32, 32, 64)	18496
max_pooling2d_2	(None, 16, 16, 64)	0
flatten_1	(None, 16384)	0
dense_2	(None, 512)	8389120
dense_3	(None, 2)	1026

Total params: 8,413,442
 Trainable params: 8,413,442
 Non-trainable params: 0

Model 1B

Layer (type)	Output Shape	Param #	Connected to
input_3	(None, 128, 128, 1)	0	
conv2d_55	(None, 128, 128, 64)	640	input_3[0][0]
batch_normalization_36	(None, 128, 128, 64)	256	conv2d_55[0][0]
conv2d_56	(None, 128, 128, 64)	36928	batch_normalization_36[0][0]
batch_normalization_37	(None, 128, 128, 64)	256	conv2d_56[0][0]
max_pooling2d_17	(None, 64, 64, 64)	0	batch_normalization_37[0][0]
conv2d_57	(None, 64, 64, 128)	73856	max_pooling2d_17[0][0]
batch_normalization_38	(None, 64, 64, 128)	512	conv2d_57[0][0]
conv2d_58	(None, 64, 64, 128)	147584	batch_normalization_38[0][0]
batch_normalization_39	(None, 64, 64, 128)	512	conv2d_58[0][0]
max_pooling2d_18	(None, 32, 32, 128)	0	batch_normalization_39[0][0]
conv2d_59	(None, 32, 32, 256)	295168	max_pooling2d_18[0][0]
batch_normalization_40	(None, 32, 32, 256)	1024	conv2d_59[0][0]
conv2d_60	(None, 32, 32, 256)	590080	batch_normalization_40[0][0]
batch_normalization_41	(None, 32, 32, 256)	1024	conv2d_60[0][0]
max_pooling2d_19	(None, 16, 16, 256)	0	batch_normalization_41[0][0]
conv2d_61	(None, 16, 16, 512)	1180160	max_pooling2d_19[0][0]
batch_normalization_42	(None, 16, 16, 512)	2048	conv2d_61[0][0]
conv2d_62	(None, 16, 16, 512)	2359808	batch_normalization_42[0][0]
batch_normalization_43	(None, 16, 16, 512)	2048	conv2d_62[0][0]
max_pooling2d_20	(None, 8, 8, 512)	0	batch_normalization_43[0][0]
conv2d_63	(None, 8, 8, 1024)	4719616	max_pooling2d_20[0][0]
batch_normalization_44	(None, 8, 8, 1024)	4096	conv2d_63[0][0]
dropout_2	(None, 8, 8, 1024)	0	batch_normalization_44[0][0]
conv2d_64	(None, 8, 8, 1024)	9438208	dropout_2[0][0]
batch_normalization_45	(None, 8, 8, 1024)	4096	conv2d_64[0][0]
up_sampling2d_8	(None, 16, 16, 1024)	0	batch_normalization_45[0][0]

conv2d_65	(None, 16, 16, 512)	2097664	up_sampling2d_8[0][0]
concatenate_8	(None, 16, 16, 1024)	0	batch_normalization_43[0][0] conv2d_65[0][0]
conv2d_66	(None, 16, 16, 512)	4719104	concatenate_8[0][0]
batch_normalization_46	(None, 16, 16, 512)	2048	conv2d_66[0][0]
conv2d_67	(None, 16, 16, 512)	2359808	batch_normalization_46[0][0]
batch_normalization_47	(None, 16, 16, 512)	2048	conv2d_67[0][0]
up_sampling2d_9	(None, 32, 32, 512)	0	batch_normalization_47[0][0]
conv2d_68	(None, 32, 32, 256)	524544	up_sampling2d_9[0][0]
concatenate_9	(None, 32, 32, 512)	0	batch_normalization_41[0][0] conv2d_68[0][0]
conv2d_69	(None, 32, 32, 256)	1179904	concatenate_9[0][0]
batch_normalization_48	(None, 32, 32, 256)	1024	conv2d_69[0][0]
conv2d_70	(None, 32, 32, 256)	590080	batch_normalization_48[0][0]
batch_normalization_49	(None, 32, 32, 256)	1024	conv2d_70[0][0]
up_sampling2d_10	(None, 64, 64, 256)	0	batch_normalization_49[0][0]
conv2d_71	(None, 64, 64, 128)	131200	up_sampling2d_10[0][0]
concatenate_10	(None, 64, 64, 256)	0	batch_normalization_39[0][0] conv2d_71[0][0]
conv2d_72	(None, 64, 64, 128)	295040	concatenate_10[0][0]
batch_normalization_50	(None, 64, 64, 128)	512	conv2d_72[0][0]
conv2d_73	(None, 64, 64, 128)	147584	batch_normalization_50[0][0]
batch_normalization_51	(None, 64, 64, 128)	512	conv2d_73[0][0]
up_sampling2d_11	(None, 128, 128, 128)	0	batch_normalization_51[0][0]
conv2d_74	(None, 128, 128, 64)	32832	up_sampling2d_11[0][0]
concatenate_11	(None, 128, 128, 128)	0	batch_normalization_37[0][0] conv2d_74[0][0]
conv2d_75	(None, 128, 128, 64)	73792	concatenate_11[0][0]
batch_normalization_52	(None, 128, 128, 64)	256	conv2d_75[0][0]
conv2d_76	(None, 128, 128, 64)	36928	batch_normalization_52[0][0]
batch_normalization_53	(None, 128, 128, 64)	256	conv2d_76[0][0]
conv2d_77	(None, 128, 128, 1)	65	batch_normalization_53[0][0]

Total params: 31,054,145
Trainable params: 31,042,369
Non-trainable params: 11,776

Model 2

Layer	Output Shape	Param #
conv3d_3	(None, 16, 16, 16, 16)	448
batch_normalization_3	(None, 16, 16, 16, 16)	64
max_pooling3d_3	(None, 8, 8, 8, 16)	0
dropout_3	(None, 8, 8, 8, 16)	0
conv3d_4	(None, 8, 8, 8, 32)	13856
batch_normalization_4	(None, 8, 8, 8, 32)	128
max_pooling3d_4	(None, 4, 4, 4, 32)	0
dropout_4	(None, 4, 4, 4, 32)	0
conv3d_5	(None, 4, 4, 4, 64)	55360
batch_normalization_5	(None, 4, 4, 4, 64)	256
max_pooling3d_5	(None, 2, 2, 2, 64)	0
dropout_5	(None, 2, 2, 2, 64)	0
flatten_2	(None, 512)	0
dense_4	(None, 512)	262656
dense_5	(None, 2)	1026

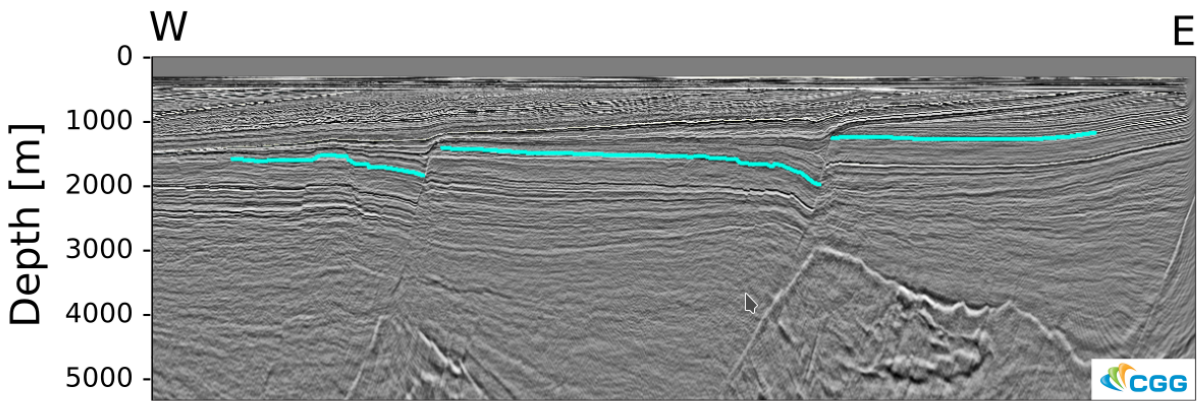
Total params: 333,794
Trainable params: 333,570
Non-trainable params: 224

Model 3

Layer	Output Shape	Param #
conv3d	(None, 32, 32, 32, 16)	448
batch_normalization	(None, 32, 32, 32, 16)	64
max_pooling3d	(None, 16, 16, 16, 16)	0
dropout	(None, 16, 16, 16, 16)	0

conv3d_1	(None, 16, 16, 16, 32)	13856
batch_normalization_1	(None, 16, 16, 16, 32)	128
max_pooling3d_1	(None, 8, 8, 8, 32)	0
dropout_1	(None, 8, 8, 8, 32)	0
conv3d_2	(None, 8, 8, 8, 64)	55360
batch_normalization_2	(None, 8, 8, 8, 64)	256
max_pooling3d_2	(None, 4, 4, 4, 64)	0
dropout_2	(None, 4, 4, 4, 64)	0
flatten	(None, 4096)	0
dense	(None, 512)	2097664
dense_1	(None, 2)	1026

Total params: 2,168,802
Trainable params: 2,168,578
Non-trainable params: 224



Supplementary Figure 1: 2-D seismic section with stratigraphic horizon predicted by deep convolutional neural network.

Computer specifications

System Information

Time of this report: 10/1/2019, 16:38:37
Operating System: Windows 10 Enterprise 64-bit (10.0, Build 16299) (16299.rs3_release_svc.180808-1748)
Language: Norwegian Bokmål (Regional Setting: Norwegian Bokmål)
System Manufacturer: HP
System Model: HP Z6 G4 Workstation
BIOS: Default System BIOS
Processor: Intel(R) Xeon(R) Gold 6128 CPU @ 3.40GHz (24 CPUs), ~3.4GHz
Memory: 65536MB RAM

Available OS Memory: 65236MB RAM
Page File: 13022MB used, 76606MB available
Windows Dir: C:\WINDOWS
DirectX Version: DirectX 12
DX Setup Parameters: Not found
User DPI Setting: 96 DPI (100 percent)
System DPI Setting: 144 DPI (150 percent)
DWM DPI Scaling: UnKnown
Miracast: Available, with HDCP
Microsoft Graphics Hybrid: Not Supported
DxDiag Version: 10.00.16299.0015 64bit Unicode

Display Devices

Card name: NVIDIA GeForce GTX 1080 Ti
Manufacturer: NVIDIA
Chip type: GeForce GTX 1080 Ti
AC type: Integrated RAMDAC
Device Type: Full Device
Device Key: Enum\PCI\VEN_10DE&DEV_1B06&SUBSYS_85E51043&REV_A1
Device Status: 0180200A
[DN_DRIVER_LOADED|DN_STARTED|DN_DISABLEABLE|DN_NT_ENUMERATOR|DN_NT_DRIVER]
Device Problem Code: No Problem
Driver Problem Code: Unknown
Display Memory: 43744 MB
Dedicated Memory: 11127 MB
Shared Memory: 32617 MB
Current Mode: 1920 x 1080 (32 bit) (32Hz)