

Start me up: The relationship between volcanic eruption characteristics and eruption initiation mechanisms

Adam J. R. Kent¹, Christy B. Till², and Kari M. Cooper³

5

1. College of Earth, Ocean, and Atmospheric Sciences, Oregon State University, Corvallis, OR, USA. adam.kent@oregonstate.edu

10

2. School of Earth and Space Exploration, Arizona State University, Tempe, AZ, USA. christy.till@asu.edu

3. Department of Earth and Planetary Sciences, University of California, Davis, CA, USA. kmcooper@ucdavis.edu

15

20 **This Manuscript has been peer reviewed and is currently in press in**
Volcanica

Start me up: The relationship between volcanic eruption characteristics and eruption initiation mechanisms

Adam J. R. Kent¹, Christy B. Till², and Kari M. Cooper³

4. College of Earth, Ocean, and Atmospheric Sciences, Oregon State University, Corvallis, OR, USA. adam.kent@oregonstate.edu

5. School of Earth and Space Exploration, Arizona State University, Tempe, AZ, USA. christy.till@asu.edu

6. Department of Earth and Planetary Sciences, University of California, Davis, CA, USA. kmcooper@ucdavis.edu

ABSTRACT

Understanding the processes that initiate volcanic eruptions after periods of quiescence are of paramount importance to interpreting volcano monitoring signals and mitigating volcanic hazards. However, studies of eruption initiation mechanisms are rarely systematically applied to high-risk volcanoes. Studies of erupted materials provide important insight into eruption initiation, as they provide direct insight into the physical and chemical changes that occur in magma reservoirs prior to eruptions. Petrologic and geochemical studies can also constrain the timing of processes involved in eruption initiation, and the time that might be expected to elapse between remote detection of increased activity and eventual eruption. A compilation and analysis of literature data shows that petrological evidence identifies four distinct processes of eruption initiation: mafic recharge (intrusion of mafic magma into a felsic magma storage region), mafic rejuvenation (intrusion of mafic magma into a mafic magma storage region), felsic rejuvenation (intrusion of felsic magma into a felsic magma storage region) and volatile accumulation. Other mechanisms such as roof collapse or increasing buoyant forces may also initiate eruptions but leave little petrological record in erupted material. There are also statistical differences in the composition, volume, style, and timescales between eruptions initiated by these different mechanisms, and these suggest that increasing eruption volumes, longer initiation timescales, more felsic compositions, and more explosive eruption styles occur going from mafic rejuvenation to mafic recharge, felsic rejuvenation and volatile accumulation. Knowledge of the processes that initiate eruptions at a given volcanic system may thus have significant predictive power.

1 INTRODUCTION

5 Volcano monitoring efforts – observations of volcanic behavior through detection of seismic activity, infrasound, deformation, gas emissions and other phenomena – are an essential component of reducing volcanic risk (Auker et al., 2013; Barclay et al., 2019; Moran et al., 2008; Poland & Anderson, 2020). However, monitoring efforts are also inherently limited, as only a small fraction of recognized subaerial volcanoes worldwide are monitored in any form, and fewer are monitored at a level considered adequate (Moran et al., 2008). Moreover, monitoring covers only a small
10 fraction of the lifetime of a given volcanic system, and many eruptions – including some of the most serious eruptions of the past century – occur at volcanoes with little or no historic indication of unrest (Biggs et al., 2014; Luhr et al., 1984; Pallister et al., 1992). Thus, another important part of mitigating volcanic risk is to develop an understanding of the key physical, chemical and other processes that occur in the subvolcanic magma systems that cause eruptive activity, and how these relate to the geophysical, geochemical and other signals detected by volcano monitoring. However, despite
15 considerable progress in our understanding of magmatic systems in the last decade, associating changes in monitoring signals with specific subsurface processes remains an extant grand challenge (National Academies of Sciences, 2017; Poland & Anderson, 2020), particularly for volcanoes that erupt infrequently.

Of particular relevance for linking magmatic processes to volcano monitoring signals are the mechanisms by which volcanic eruptions are initiated. Most volcanoes, especially those that erupt intermediate and evolved compositions,
20 experience long periods of quiescence between eruptions, and spend significantly more time in repose than actively erupting (Deligne et al., 2010; Passarelli & Brodsky, 2012; Pritchard et al., 2018; Rougier et al., 2018). Erupted magmas may themselves also be stored in the crust for long periods – thousands of years or more – prior to eruption (Claiborne et al., 2010; Cooper, 2019; Cooper & Kent, 2014). Thus, magmas and related crystal-rich mush zones can reside in a stable or quasi-stable state within the Earth’s crust prior to erupting, and a set of specific and probably quite rare processes
25 may be required to initiate eruption.

Understanding the processes that initiate volcanic eruptions is thus of critical importance to understand volcano behavior and hazards (National Academies of Sciences, 2017), but has seen surprisingly little systematic study. As an example, a monolithic compendium of volcano knowledge, the *Encyclopedia of Volcanoes* (2nd Ed.) (Sigurdsson, 2015) with 71 chapters and 1300 pages, has no discrete chapter dedicated to the processes that initiate volcanic eruptions, and relatively
30 little mention of these processes throughout. Studying the geological history of a given volcano through mapping, geochronology and other means is an established and valuable method for evaluating the likelihood and character of

future eruptions (Condit & Connor, 1996; Poland & Anderson, 2020), but it is also rare that this is linked to systematic petrological and other studies that reveal the processes that initiated past eruptions (Connor et al., 2003).

The initiation of eruption is considered to result from a magma reservoir attaining the critical overpressure or tensile stress at its boundary with surrounding rock to trigger crustal failure, dike propagation, and magma ascent to the surface (Degruyter & Huber, 2014; Eichelberger et al., 2006; Pinel & Jaupart, 2000). In detail, other factors such as the rate of increases in overpressure, volatile abundance, internal magma dynamics, and the structural, stress, and rheological state of surrounding rocks are also highly important (Albright, 2019; Degruyter & Huber, 2014; Gregg et al., 2013). Thus eruption initiation is best considered within a framework of the complex transc crustal magma systems that underlie volcanoes (Cashman et al., 2017), and where much of the stored magma may exist as a crystal-rich mush (Bachmann & Bergantz, 2008; Bergantz et al., 2017; Cashman et al., 2017; Cooper & Kent, 2014; Edmonds et al., 2016; Rubin et al., 2017).

As a result of this complexity, the study of eruption initiation requires a multidisciplinary approach. Amongst these, direct studies of erupted material provide some of the most useful insights. The processes that induce eruption leave distinct signatures in terms of the crystallinity, crystal and liquid chemistry, textures, and other features preserved within erupted materials, and often record the last high temperature processes to impact a given magma, which increases preservation potential. In addition, the timing of initiation events can be estimated from the diffusion of major or trace elements in minerals or glasses, as well as crystal growth and dissolution rates, with increasing sophistication and accuracy (Costa et al., 2020). Despite this importance, systematic studies of the processes that initiate eruption in a given volcanic system over time are less common (Kent et al., 2010; Shamloo & Till, 2019; Mangler et al., 2022).

1.1 Nomenclature and definitions

Currently in the literature there are variations in nomenclature, with both the terms “eruption initiation” and “eruption trigger” being used to describe a broad range of processes and outcomes involved with volcanic eruptions. These include deeper magmatic processes, as well as those that occur more shallowly within a conduit or edifice. Initiation or triggering are also variably applied to changes in eruption intensity or style (such as effusive to explosive transitions) that occur as part of an ongoing eruption, and also surficial events such as collapse events in an eruption column, volcanic edifice, or dome. For this study we consider a useful definition of eruption initiation to be: *“the process or set of processes that result in a previously stable or quasi stable accumulation of magmatic material within the crust to commence moving upward and eventually erupt”*. By “stable or quasi stable”, we mean magma bodies or crystal-rich mushes that have recently not been mobile, have not exceeded the critical overpressure or other parameters required to commence upward movement, nor have they shown previous indication of eruption. If the volcano in question is being monitored, then this state prior to eruption initiation would also include seismicity and other monitoring signals being at baseline levels.

We suggest that a more specific definition of eruption initiation, such as that proposed above, will help focus research on this critical subject, and that the term “eruption triggering” retain a more generic and contextual meaning. The May 18, 1980 eruption of Mount St Helens provides an example of this usage. The trigger for the eruption was a magnitude 5.1 earthquake and landslide. However, eruption initiation occurred several months earlier when magma started to ascend
5 from a crustal reservoir to form a shallow cryptodome after many decades of quiescence.

2 MECHANISMS OF VOLCANIC ERUPTION INITIATION

Although systematic studies of eruption initiation are relatively rare, there are many studies in the literature that report
10 results and observations that bear on this important topic. We have compiled studies that primarily use petrological, geochemical, and related techniques (in some cases this information was also combined with other data from seismicity, ground deformation, gas release and other sources) to infer the processes involved in the initiation of a range of different volcanic eruptions, and that also estimate the time elapsed between the initiation event(s) and eventual eruption. In some cases, these studies do not explicitly identify the eruption initiation mechanism, but we believe it is possible to do so
15 from reported data and observations. Any errors in these interpretations are our own, and in the future, with greater emphasis on eruption initiation, it may be possible to refine our classification. In total, we have 80 eruptive events in our compilation representing over 40 different volcanoes. Volcanoes in the compilation come from a range of tectonic settings but are mostly commonly from subduction and intraplate environments.

We also focus largely on volcanoes and eruptions that represent mobilization of magma after significant quiescence, as
20 fitting our definition of eruption initiation above. However, we have also included data in our compilation for some so-called open-conduit volcanic systems such as Stromboli and Mount Etna. These volcanoes exhibit long term eruptive activity with occasional changes in eruptive style due to paroxysmal events (e.g., Andronico et al. 2021). Although these systems may not strictly fit the definition of eruption initiation above, these events typically reflect major changes in eruptive activity, which is otherwise relatively stable, largely due to arrival of new batches of magma arriving in the
25 shallow magma storage system.

On the basis of our compilation, we recognize four different eruption initiation mechanisms, three relating to intrusion of new magma and one to accumulation of volatile phases. These are discussed in greater detail below. We also note that there are other mechanisms that have been suggested to initiate eruptions. These include near field phenomena such as roof collapse above large magma chambers (Gregg et al., 2012) and build-up of buoyancy forces (Caricchi et al., 2014; Malfait et al., 2014), as well as far field forcing related to large earthquakes (Cabaniss et al., 2018; Hamling & Kilgour, 2020). Although these mechanisms may be important in some settings, we do not consider them in detail here as they
30 are less likely to leave distinctive petrological or geochemical signatures in erupted products, other than an absence of

evidence for other initiation mechanisms. Future work may be able to identify methods whereby these mechanisms can be recognized from studies of erupted materials.

2.1 Mafic Recharge

5 Eruption initiation by addition of mafic magma to a more felsic magma reservoir is identified in 41% of the eruptions in our compilation, and is common in volcanoes in arc settings. Although the term “recharge” has a generic connotation of addition of magma, we recommend that the term *mafic recharge* refer exclusively to cases where significantly more mafic magma (typically basalt or basaltic andesite in composition) is added to a resident more felsic magma (andesite to rhyolite) (Eichelberger, 1978). The ramifications of this process are known relatively well from analogue and numerical
10 experiments and field and petrological studies, and the petrologic record of this event includes the presence of reversely zoned crystals and different compositional and textural populations of the same mineral derived from distinct mafic and felsic magmas, disequilibrium mineral assemblages (e.g., quartz and olivine), multiple mafic and felsic liquid components in glasses or melt inclusions, and at the field scale hybridized magmas, enclaves, banded pumice, compositionally zoned deposits, and related phenomena (Eichelberger, 1978; Eichelberger et al., 2006; Humphreys et al., 2009; Huppert et al., 1982; Kent et al., 2010; Murphy et al., 1998; Ruprecht et al., 2008; Ruprecht & Wörner, 2007; Salisbury et al., 2008; Sparks et al., 1977; Tepley et al., 1999). Intrusion of mafic material leads to a range of volatile exchange and saturation phenomena, increases in volume and/or internal pressure, and convective overturn. Phenocrysts in this scenario typically show evidence for large temperature contrasts (typically $\geq \sim 100^\circ\text{C}$) associated with rim growth (Koleszar et al. 2012; Matthews et al., 2012), often associated with extensive mineral dissolution or reaction rims
20 (Eichelberger, 1978). The presence of microlites or microphenocrysts with mafic signatures within less mafic magmas also suggests magma mixing immediately prior to eruption (Humphreys et al., 2009; Kent et al., 2010; Martel, 2012; Salisbury et al., 2008).

Timing constraints for eruptions initiated via mafic recharge typically derive from estimating the timing elapsed between growth of reversely zoned crystal rims and eruption. Such “step function” zoning geometries in major and trace element
25 abundances are well suited to diffusion modelling (Barker et al., 2016; Kent et al., 2010; Martin et al., 2008; Matthews et al., 2012; Singer et al., 2016; Costa et al., 2020). Although an outstanding question is how much time elapses during dissolution before new rim growth occurs, this is probably not significantly longer than the time taken to grow the rims as mineral dissolution rates are typically faster than growth rates. Estimates of the timescale associated with mafic recharge can also come from direct observations of modern eruptions (Cassidy et al., 2016; Pallister et al., 1996), re-
30 equilibration of Fe-Ti oxides, and estimates of mineral growth and dissolution and melt inclusion preservation (Chertkoff & Gardner, 2004; Martel, 2012; Nakamura, 1995; Salisbury et al., 2008; Venezky & Rutherford, 1997, 1999; Wotzlaw et al., 2013).

2.2 Rejuvenation

The majority (53%) of eruptions in our compilation result from intrusion of magma of broadly similar composition to the resident magma. We term this *rejuvenation*, and given that the compositions of magmas associated with rejuvenation also vary, we further recognize both *mafic rejuvenation* (32% of the compilation) and *felsic rejuvenation* (21%). We also
5 note that differences in composition between introduced and resident magmas vary on a continuum between mafic recharge and rejuvenation. A fourth potential mechanism – *felsic recharge* – could occur when felsic magma intrudes a mafic magma reservoir but appears to be rare (Eichelberger & Izbekov, 2000).

Relative to mafic recharge, eruptions initiated via rejuvenation are more likely to result from increased overpressure related to magma addition, together with increased buoyancy forces, and/or decreasing viscosity through changes in
10 temperature and crystallinity. Mineral zoning and mineral populations associated with both mafic rejuvenation and felsic rejuvenation show more subtle differences than in the case of mafic recharge, and the primary difference between the intruding and resident magma may be degree of crystallinity with only minimal temperature differences, as revealed by eruptions that are cryptically zoned in terms of modal crystal proportions (Bachmann & Bergantz, 2008; Bachmann et al., 2014; Ruprecht & Wörner, 2007; Shamloo & Till, 2019), or contain glomerocrysts, strained crystals and other
15 evidence for disaggregation of crystal-rich cumulates (Bradshaw et al., 2018; Clague & Denlinger, 1994; Thomson & Maclennan, 2013). Crystals from these include phenocrysts with subtle reverse zoning in the outermost rims, often in phases with more limited compositional stability fields such as olivine, sanidine and quartz, indicating that although the replenishing magma was somewhat less evolved in terms of incompatible trace elements, it was broadly similar with respect to phase stability (de Silva et al., 2008; Shamloo & Till, 2019; Till et al., 2015; Viccaro et al., 2006).

Mafic rejuvenation is the dominant mechanism in large shield volcanoes in extensional and arc settings, and felsic
20 rejuvenation appears important for many felsic eruptions, including some of the largest known caldera eruptions (Chamberlain et al., 2014; Shamloo & Till, 2019), as well as in arc settings. Eruption timescales for rejuvenation are typically estimated using diffusion in mineral rims. This includes high Ba and high Ti rims on sanidine and quartz for felsic rejuvenation, and high Mg/Fe rims on olivine and orthopyroxene crystals for mafic rejuvenation (Costa et al.,
25 2020). In some cases, growth rates of mineral rims can also be used (Chamberlain et al., 2014; Shamloo & Till, 2019).

2.3 Vapor Saturation and Exsolution

This mechanism has long been considered important (Blake, 1984; Fowler & Spera, 2008, 2010; Sisson & Bacon, 1999; Tramontano et al., 2017) but is identified in only 6% of the eruptions in our compilation, all of which occur in arc
30 settings. Petrologic modelling suggests that volatile accumulation during progressive igneous evolution may be an important eruption initiation mechanism for large felsic magma bodies (Fowler & Spera, 2008, 2010; Tramontano et al.,

2017). Vapor saturation and increased overpressure can occur related to decompression (“first boiling”), or more commonly when the magma attains vapor saturation during crystallization (“second boiling”) (Sisson & Bacon, 1999). In addition, upward movement of vapor exsolved deeper in a magmatic system or assimilation of hydrothermally-altered wallrocks, could also produce increased vapor pressure and vapor saturation (Fowler & Spera, 2008, 2010; Tramontano et al., 2017). Vapor accumulation may be more challenging to definitively identify using petrological means, as most major and accessory phases record normal zoning and other changes corresponding to subtly decreasing temperature and increased crystallinity. However, minerals that incorporate volatile species, such as amphibole, biotite, or apatite; fluid or melt inclusions hosted in a variety of phases; and/or mineral zoning in trace elements that preferentially partition into an exsolved vapor, can record progressive changes in vapor saturation and vapor composition during progressive crystallization (Andersen et al., 2018; Berlo et al., 2006; Blundy et al., 2010; Budd et al., 2017; Kent et al., 2007). Eruption initiation timescales for volatile accumulation in arc magmas have been estimated using diffusion of volatiles or elements with an affinity for the vapor phase or from mineral rims associated with vapor accumulation, and from re-equilibration (or lack thereof) of melt inclusions (Budd et al., 2017; Kent et al., 2007).

15 3 METHODS

3.1 Statistical Comparison of Eruption Initiation Mechanisms

Our compilation and sources can be found in Supplementary Table 1. To maximize the amount of available data, our data include both single historic eruptions as well as prehistoric eruptive sequences. For each eruption in our compilation, we have also recorded the dominant erupted composition(s), dominant eruption style, erupted volume, and estimated timescale for eruption initiation using published information. Where multiple compositions or eruptions styles were observed within a single eruption, we selected the most volumetrically dominant. All variables are recorded as categorical variables using the rubric outlined in Table 1. Some of the variables in our data compilation are already categorical (eruption style, rock type), and we have elected to treat other variables such as erupted volume and initiation timescale as categorical, even where they are nominally continuous, as this minimizes the effects of the large uncertainties that are often apparent in these quantities. For the timescale, there was still some overlap between some categories, so each study was assigned six points per eruption, and these were distributed among the relevant categories (i.e., a timing estimate that ranged from weeks to years was given two points in each of the ‘years’, ‘months,’ and ‘weeks’ categories). Points were then summed for each category and expressed in percent of total.

30 To investigate whether there are significant differences in timescales, eruption type, and erupted volume between different initiation mechanisms we have investigated our categorical data using the two-tailed Fisher Exact Test, a

statistical significance test used for the analysis of categorical data in contingency tables (Fisher, 1922, Hall and Richardson, 2016). This test is valid over a range of sample sizes and is preferred over the χ^2 test where, as in our case, individual categories may be small ($n < 5-10$). To do this we reassigned our data for all parameters into two “dichotomized” categories, selected to minimize overlap between categories for individual studies (Table 1). For the
5 small number of cases where there was still some overlap between these simplified categories, we placed the individual study into the most likely category based on available data.

We use the Fisher Exact test by testing a series of null hypotheses (H_0) that there are no differences between different eruption mechanisms in terms of individual categories. For example, for erupted volumes the null hypothesis states that there is no difference between two eruption initiation mechanisms in terms of the proportions of eruptions that are ≤ 1
10 km^3 and $> 1 \text{ km}^3$:

$$\pi_{\text{Mafic Recharge}} = \pi_{\text{Felsic Rejuvenation}} \quad (1)$$

and an alternate hypothesis (H_1) is that

15

$$\pi_{\text{Mafic Recharge}} \neq \pi_{\text{Felsic Rejuvenation}} \quad (2)$$

Where π represents the proportion of eruptions initiated by mafic recharge and felsic rejuvenation that have volume < 1
20 km^3 . We then determine from our observed data if we have enough evidence to reject the null hypothesis at a reasonable level of significance.

We have implemented this approach using both 2×4 contingency tables (Table 2) to compare a given eruption characteristic (e.g., erupted volume) between all four identified eruption initiation mechanisms, and have also conducted further focused hypothesis testing between pairs of eruption mechanisms for a specific eruption characteristic using 2×2 contingency tables (Tables 3-6). Calculations for 2×2 contingency tables were done using the ‘fishertest’ routine in
25 MATLABTM. Calculations for 2×4 contingency tables used the ‘MyFisher24’ function in MATLABTM (Cardillo, 2020) and the JavaScript calculator available at <http://vassarstats.net/fisher2x4.html>, which produce comparable results. Results are reported in terms of P values in Tables 3-6, where P represents the probability of getting the observed distribution, assuming that the null hypothesis is correct. In accordance with recommended usage (Wasserstein and Lazar, 2016), we do not use $P < 0.05$ as a rigid criterion to reject the null hypothesis, but as a guide to suggest where
30 important relationships may exist. Where comparisons show P values that are relatively low, but not less than 0.05, these may also be further tested with more data.

4 COMPARISON BETWEEN ERUPTION INITIATION MECHANISMS

Our compilation allows us to compare some key eruption characteristics – the eruption style, erupted volume, erupted composition, and eruption initiation timescale – between eruptions initiated by the different mechanisms we identify above. These results, summarized in Figures 1-3, suggest there are systematic differences in these eruption characteristics between eruptions initiated by the different eruption initiation mechanisms we identify. Although in some cases these differences are obvious, such as the compositional differences between mafic rejuvenation and felsic rejuvenation, for other parameters these systematic variations suggest there are consistent differences between eruptions initiated by different mechanisms. The statistical comparison of each characteristic across the four different initiation mechanisms using a 4 x 2 contingency table shows low P values for erupted composition, erupted volume, eruption style and initiation timescale, and thus the probability of the null hypothesis explaining the observed distribution for each of these parameters is considered low. In addition, the 2 x 2 contingency tables show low P values for the following:

1. Eruption timescale (mafic rejuvenation vs. felsic rejuvenation; mafic rejuvenation vs. mafic recharge)
2. Erupted volume (mafic rejuvenation vs. mafic recharge)
3. Eruption style (mafic rejuvenation vs. felsic rejuvenation; mafic rejuvenation vs. mafic recharge; mafic rejuvenation vs. volatile accumulation)
4. Erupted composition (mafic rejuvenation vs. felsic rejuvenation; mafic rejuvenation vs. mafic recharge; mafic rejuvenation vs. volatile accumulation)

Some other comparisons also have relatively low P values (< 0.4): mafic rejuvenation vs. volatile accumulation for eruption timescale; felsic rejuvenation vs mafic recharge and volatile accumulation vs mafic recharge for eruption style; and felsic rejuvenation vs. volatile accumulation and mafic recharge vs. volatile accumulation for erupted composition. This may suggest these comparisons are also worth further exploration – particularly those associated with volatile accumulation as the number of studies in the compilation is low ($n = 5$).

Overall, this simple analysis suggests that specific differences in eruption style, volume, composition, and timing are associated with differences in eruption initiation mechanisms that can be identified from petrological observations. Based on this prior knowledge of the eruption initiation mechanisms over the life of a specific volcanic system may thus have useful predictive power for future eruptions. These data also allow us to hypothesize that there are general trends in increasing eruption volumes, longer initiation timescales, more felsic compositions, and more explosive eruption style going from mafic rejuvenation to mafic recharge, felsic rejuvenation and volatile accumulation, as summarized in Figure 3.

5. THE UTILITY OF PETROLOGICAL STUDIES IN UNDERSTANDING ERUPTION INITIATION

Our results emphasize two important points. Firstly, although further refinements are certainly possible, studies of erupted volcanic products are one of the best means we currently have to characterize a given volcanic system in terms of the process or processes that initiated eruptions. Observations from volcano monitoring also provide important insight, but studies of erupted materials allow for the identification of physical and chemical changes associated with eruption, and the associated timescales, and can be applied throughout the available eruptive record. Secondly, having some knowledge of the initiation processes that are likely to occur in a given system offers significant potential for insight into forecasting the initiation timescale and some other characteristics of future eruptions. Thus, systematic studies of eruption initiation mechanisms offer considerable promise in assessing the nature of future eruptions and their associated hazards, and may add value to extant or planned monitoring programs.

10 To improve and expand on this we make four recommendations for priority areas of work.

5.1.1 Increased emphasis on understanding eruption initiation

It is time for a renewed emphasis on the critical subject of eruption initiation mechanisms, including understanding the processes that take volcanic systems from quiescence to eruption and how these processes are recorded (or not) in erupted magmatic products. Our review reveals that many studies of volcanic systems report sufficient petrological, textural and other information to infer the initiation mechanism, but do not explicitly do so. Introducing consistent nomenclature and classification of eruption initiation mechanisms, as we recommend above, will also help. With more data (see below) it may also be possible to further constrain the types of eruption initiation mechanisms beyond the simple categorization we present above.

15

5.1.2 More data is better than better data

We need constraints on the initiation processes and associated timescales for more eruptions. Although we should also aim to improve the accuracy of timescale estimates based on diffusion chronometry and other methods, we argue that progress may be better served at this stage by applying existing techniques to more eruptions. In other words, doubling the number of volcanoes and eruptions studied with the types of techniques exemplified in our literature compilation would provide broader insights than doubling the precision and accuracy of existing chronometers. Our data compilation shows the limits of relatively small numbers for several categories, and greater numbers of available data across different volcano and eruption types and different tectonic environments would open up exciting new opportunities. A more complex categorical scheme, versus the simplified approach we use here, could explore characteristics of eruptions in much greater detail if larger numbers of eruptions were available for analysis. More data would also provide greater statistical power to address key questions such as the commonality of a particular eruption initiation mechanism over an individual volcano's lifetime, how common specific eruption initiation mechanisms are to particular types of volcanoes

20

25

30

and tectonic settings, and the controls on volcanic repose time. Examples of this include the suggestion that estimated eruption initiation timescales may be longer for more felsic (dacite, rhyodacite and rhyolite) eruptions initiated by mafic recharge and felsic rejuvenation (Figure 2), as well as that repose times might also vary with composition.

5.1.3 Greater integration with monitoring

5 Monitoring active and potentially active volcanoes saves lives and property, particularly when integrated with effective hazard mitigation planning. However, there is a need for greater understanding of the relationship between the signals gained from volcanic monitoring methods, and the signals of underlying magmatic processes recorded in the rocks themselves. This is particularly important where petrological features are used to estimate the timescales leading to eruption initiation, as it is critical to understand exactly what event a given petrological feature records, and what the
10 timescale estimated from that event specifically represents (e.g. Costa et al., 2020). Studies of modern eruptions are key here, as they allow direct comparison between monitoring signals and the physical and chemical changes recorded by magma in a magma reservoir undergoing initiation. These relationships are actively being explored, aided by increasingly common application of diffusion chronometry (Pankhurst et al., 2018; Rasmussen et al., 2018; Saunders et al., 2012; Costa et al., 2020) but much progress remains to be made. To illustrate the importance of this approach, we
15 show a compilation of the timescales of unrest based on various monitoring signals for eruptions with corresponding petrologic initiation timescales from diffusion chronometry or similar approaches in Figure 4. Although we are limited by available data, the results suggest there is not a uniformly simple 1:1 relationship. Mafic rejuvenation is the most frequently identified eruption initiation mechanism in studies where initiation timescales and unrest timescales are both documented, and also appears the most likely to show agreement in the general magnitude of these timescales. However,
20 the limited data suggests the same may not be true for other eruption initiation mechanisms. Improved understanding of the relationship between these two signals will also improve the ability to assess and forecast volcanic hazards.

5.1.4 Increased petrological monitoring

Petrologic studies offer a cost-effective way to understand more about volcanic hazards in understudied volcanoes and to leverage existing monitoring resources. It is relatively common to map the compositions, type, and extent of eruptions
25 through time at a given volcano to gauge hazards, but it is less common to combine this with systematic studies of eruption initiation mechanisms. In poorly monitored volcanoes this might be one way to understand the likely nature and timescales of future unrest episodes. Such observations could be used to augment the monitoring record and provide a greater context for recognizing the likely mechanism for future eruption initiation. In systems with more comprehensive monitoring programs, such data could also help refine traditionally problematic aspects of monitoring such as
30 recognizing the causes of “failed eruptions” – episodes of instrumental and other unrest that do not result in eruptions.

Importantly, the time to conduct such studies is in the early stages of a monitoring program and prior to the onset of a new eruptive episode.

In conclusion, the links between eruption initiation mechanisms and eruption characteristics shown here indicate there is significant predictive power in a determination of eruption initiation mechanisms for a given volcanic system. Petrologic studies of erupted materials are particularly important for this. Thus, studies of eruption initiation mechanisms using petrological and other approaches show promise for mitigating volcanic hazards, especially when paired with volcano monitoring data.

10 AUTHOR CONTRIBUTIONS

All authors declare no competing financial interests. All three authors jointly conceived the work and collected data from the literature. AJRK took the lead on writing the manuscript, CBT and KMC assisted and edited the document.

ACKNOWLEDGEMENTS

15 Many thanks to Chiara Petrone and an anonymous reviewer for valuable feedback that improved this work. The ideas for this work stem from NSF-EAR-1654584 (CAREER) to CBT, the 2018 Workshop on Community Volcano Experiments in Albuquerque, New Mexico, and the 2019 CIDER workshop in Berkeley, California, as well as discussions with colleagues at these events and elsewhere. All authors gratefully acknowledge funding support from the National Science Foundation: AJRK NSF-EAR-1654275 and NSF-EAR-1654275; CBT NSF-EAR-1654584; KMC
20 NSF-EAR-1654506.

SUPPLEMENTAL DATA

Supplemental Data Table 1. Eruption Data Compilation and Summary

REFERENCES

- Albright, J. A., Gregg, P. M., Lu, Z., & Freymueller, J. T. (2019). Hindcasting magma reservoir stability preceding the 2008 eruption of Okmok, Alaska. *Geophysical Research Letters*, 46, 8801–8808. doi:<https://doi.org/10.1029/2019GL083395>
- Andersen, N. L., Singer, B. S., Costa, F., Fournelle, J., Herrin, J. S., & Fabbro, G. N. (2018). Petrochronologic perspective on rhyolite volcano unrest at Laguna del Maule, Chile. *Earth and Planetary Science Letters*, 493, 57-70. doi:10.1016/j.epsl.2018.03.043
- Andronico, D., Del Bello, E., D’Oriano, C. Landi P., Pardini F., Scarlato P., de’ Michieli Vitturi M., Taddeucci J., Cristaldi A., Ciancitto F., Pennacchia F., Ricci T., & Valentini F. (2021) Uncovering the eruptive patterns of the 2019 double paroxysm eruption crisis of Stromboli volcano. *Nature Communications*, 12, 4213. <https://doi.org/10.1038/s41467-021-24420-1>
- Auker, M. R., Sparks, R. S. J., Siebert, L., Crossweller, H. S., & Ewert, J. (2013). A statistical analysis of the global historical volcanic fatalities record. *Journal of Applied Volcanology*, 2. doi:doi:10.1186/2191-5040-2-2
- Bachmann, O., & Bergantz, G. W. (2008). Rhyolites and their Source Mushes across Tectonic Settings. *Journal of Petrology*, 49(12), 2277-2285. doi:Doi 10.1093/Petrology/Egn068
- Bachmann, O., Deering, C. D., Lipman, P. W., & Plummer, C. (2014). Building zoned ignimbrites by recycling silicic cumulates: insight from the 1,000 km³ Carpenter Ridge Tuff, CO. *Contributions to Mineralogy and Petrology*, 167(6). doi:10.1007/s00410-014-1025-3
- Bachmann, O., & G.W., B. (2008). Rhyolites and their Source Mushes across Tectonic Settings. *Journal of Petrology*, 49, 2277-2285. doi:Doi 10.1093/Petrology/Egn068
- Barclay, J., Few, R., Armijos, M. T., Phillips, J. C., Pyle, D. M., Hicks, A., . . . Robertson, R. E. A. (2019). Livelihoods, Wellbeing and the Risk to Life During Volcanic Eruptions. *Frontiers in Earth Science*, 7. doi:10.3389/feart.2019.00205
- Barker, S. J., Wilson, C. J. N., Morgan, D. J., & Rowland, J. V. (2016). Rapid priming, accumulation, and recharge of magma driving recent eruptions at a hyperactive caldera volcano. *Geology*, 44(4), 323-326. doi:10.1130/g37382.1
- Bergantz, G. W., Schleicher, J. M., & Burgisser, A. (2017). On the kinematics and dynamics of crystal-rich systems. *Journal of Geophysical Research: Solid Earth* 122, 6131-6159. doi:doi:10.1002/2017JB014218
- Berlo, K., Turner, S., Blundy, J., Black, S., & Hawkesworth, C. (2006). Tracing pre-eruptive magma degassing using (210Pb/226Ra) disequilibria in the volcanic deposits of the 1980-1986 eruption of Mount St. Helens. *Earth and Planetary Science Letters*, 249, 337-349.

- Biggs, J., Ebmeier, S. K., Aspinall, W. P., Lu, Z., Pritchard, M. E., Sparks, R. S., & Mather, T. A. (2014). Global link between deformation and volcanic eruption quantified by satellite imagery. *Nat Commun*, 5, 3471. doi:10.1038/ncomms4471
- Blake, S. (1984). Volatile oversaturation during the evolution of silicic magma chambers as an eruption trigger. *Journal of Geophysical Research: Solid Earth*, 89, 8237-8244.
- Blundy, J., Cashman, K., Rust, A., & Witham, F. (2010). A case for CO₂-rich arc magmas. *Earth and Planetary Science Letters*, 290, 289-301.
- Bradshaw, R. W., Kent, A. J. R., & Tepley, F. J. (2018). Chemical fingerprints and residence times of olivine in the 1959 Kilauea Iki eruption, Hawaii: Insights into picrite formation. *American Mineralogist*, 103(11), 1812-1826. doi:10.2138/am-2018-6331
- Budd, D. A., Troll, V. R., Deegan, F. M., Jolis, E. M., Smith, V. C., Whitehouse, M. J., . . . Bindeman, I. N. (2017). Magma reservoir dynamics at Toba caldera, Indonesia, recorded by oxygen isotope zoning in quartz. *Sci Rep*, 7, 40624. doi:10.1038/srep40624
- Cabaniss, H. E., Gregg, P. M., & Grosfils, E. B. (2018). The Role of Tectonic Stress in Triggering Large Silicic Caldera Eruptions. *Geophysical Research Letters*, 45(9), 3889-3895. doi:10.1029/2018gl077393
- Caricchi, L., Annen, C., Blundy, J., Simpson, G., & Pinel, V. (2014). Frequency and magnitude of volcanic eruptions controlled by magma injection and buoyancy. *Nature Geoscience*, 7, 126–130. doi:http://dx.doi.org/10.1038/ngeo2041
- Cashman, K. V., Sparks, R. S., & Blundy, J. D. (2017). Vertically extensive and unstable magmatic systems: A unified view of igneous processes. *Science*, 355(6331). doi:10.1126/science.aag3055
- Cashman, K. V., Sparks, R. S. J., & Blundy, J. D. (2017). Vertically extensive and unstable magmatic systems: A unified view of igneous processes. *Science*, 355(6331). doi:10.1126/science.aag3055
- Cassidy, M., Castro, J. M., Helo, C., Troll, V. R., Deegan, F. M., Muir, D., . . . Mueller, S. P. (2016). Volatile dilution during magma injections and implications for volcano explosivity. *Geology*, 44(12), 1027-1030. doi:10.1130/g38411.1
- Chamberlain, K. J., Morgan, D. J., & Wilson, C. J. N. (2014). Timescales of mixing and mobilisation in the Bishop Tuff magma body: perspectives from diffusion chronometry. *Contributions to Mineralogy and Petrology*, 168(1). doi:10.1007/s00410-014-1034-2
- Chertkoff, D. G., & Gardner, J. E. (2004). Nature and timing of magma interactions before, during, and after the caldera-forming eruption of Volcán Ceboruco, Mexico. *Contributions to Mineralogy and Petrology*, 146(6), 715-735. doi:10.1007/s00410-003-0530-6

- Clague, D. A., & Denlinger, R. P. (1994). Role of olivine cumulates in destabilizing the flanks of Hawaiian volcanoes. *Bulletin of Volcanology*, 56, 425–434.
- Claiborne, L. L., Miller, C. F., Flanagan, D. M., Clynne, M. A., & Wooden, J. L. (2010). Zircon reveals protracted magma storage and recycling beneath Mount St. Helens. *Geology*, 38(11), 1011-1014. doi:10.1130/g31285.1
- 5 Condit, C., & Connor, C. (1996). Recurrence rates of volcanism in basaltic volcanic fields: An example from the Springerville volcanic field, Arizona. *Geological Society of America Bulletin* 108, 1225–1241. doi:https://doi.org/10.1130/0016-7606(1996)108<1225:RROVIB>2.3.CO;2
- Connor, C., Sparks, R. S., Mason, R. M., Bonadonna, C., & Young, S. R. (2003). Exploring links between physical and probabilistic models of volcanic eruptions: The Soufrière Hills Volcano, Montserrat. *Geophysical Research Letters*, 30. doi:doi:10.1029/2003GL017384
- 10 Cooper, K. M. (2019). Time scales and temperatures of crystal storage in magma reservoirs: implications for magma reservoir dynamics. *Philosophical Transactions of the Royal Society A: Mathematical, Physical and Engineering Sciences*, 377(2139), 20180009. doi:doi:10.1098/rsta.2018.0009
- Cooper, K. M., & Kent, A. J. (2014). Rapid remobilization of magmatic crystals kept in cold storage. *Nature*, 506(7489), 480-483. doi:10.1038/nature12991
- 15 Costa, F., Shea, T., & Ubide, T. (2020). Diffusion chronometry and the timescales of magmatic processes. *Nature Reviews Earth & Environment*, 1(4), 201-214. doi:10.1038/s43017-020-0038-x
- de Silva, S., Salas, G., & Schubring, S. (2008). Triggering explosive eruptions—The case for silicic magma recharge at Huaynaputina, southern Peru. *Geology*, 36(5). doi:10.1130/g24380a.1
- 20 Degruyter, W., & Huber, C. (2014). A model for eruption frequency of upper crustal silicic magma chambers. *Earth and Planetary Science Letters*, 403, 117-130. doi:10.1016/j.epsl.2014.06.047
- Deligne, N. I., Coles, S. G., & Sparks, R. S. J. (2010). Recurrence rates of large explosive volcanic eruptions. *Journal of Geophysical Research*, 115(B6). doi:10.1029/2009jb006554
- Edmonds, M., Kohn, S. C., Hauri, E. H., Humphreys, M. C. S., & Cassidy, M. (2016). Extensive, water-rich magma reservoir beneath southern Montserrat. *Lithos*, 252-253, 216-233. doi:10.1016/j.lithos.2016.02.026
- 25 Eichelberger, J. C. (1978). Andesitic volcanism and crustal evolution. *Nature*, 275(5675), 21-27.
- Eichelberger, J. C., & Izbekov, P. E. (2000). Eruption of andesite triggered by dyke injection: contrasting cases at Karymsky Volcano, Kamchatka and Mt Katmai, Alaska. *Philosophical Transactions A of the Royal Society of London*, 358, 1465–1485. doi:http://doi.org/10.1098/rsta.2000.0599
- 30 Eichelberger, J. C., Izbekov, P. E., & Browne, B. L. (2006). Bulk chemical trends at arc volcanoes are not liquid lines of descent. *Lithos*, 87(1-2), 135-154.
- Fisher, R. A. (1934). *Statistical Methods for Research Workers* 5th ed. . Edinburgh, Scotland: Oliver & Boyd.

- Fowler, S. J., & Spera, F. J. (2008). Phase equilibria trigger for explosive volcanic eruptions. *Geophysical Research Letters*, 35(8). doi:10.1029/2008gl033665
- Fowler, S. J., & Spera, F. J. (2010). A Metamodel for Crustal Magmatism: Phase Equilibria of Giant Ignimbrites. *Journal of Petrology*, 51(9), 1783-1830. doi:10.1093/petrology/egq039
- 5 Gregg, P. M., de Silva, S. L., & Grosfils, E. B. (2013). Thermomechanics of shallow magma chamber pressurization: Implications for the assessment of ground deformation data at active volcanoes. *Earth and Planetary Science Letters*, 384, 100-108. doi:10.1016/j.epsl.2013.09.040
- Gregg, P. M., de Silva, S. L., Grosfils, E. B., & Parmigiani, J. P. (2012). Catastrophic caldera-forming eruptions: Thermomechanics and implications for eruption triggering and maximum caldera dimensions on Earth. *Journal of Volcanology and Geothermal Research*, 241-242, 1-12.
- 10 Hall, M., & Richardson, T. (2016). Basic Statistics for Comparing Categorical Data From 2 or More Groups. *Hosp Pediatr*, 6(6), 383-385. doi:10.1542/hpeds.2015-0273
- Hamling, I., & Kilgour, G. N. (2020). Goldilocks conditions required for earthquakes to trigger basaltic eruptions: Evidence from the 2015 Ambrym eruption. *Science Advances*, 6 : eaaz5261.
- 15 Humphreys, M. C. S., Christopher, T., & Hards, V. (2009). Microlite transfer by disaggregation of mafic inclusions following magma mixing at Soufriere Hills volcano, Montserrat. *Contributions to Mineralogy and Petrology*, 157(5), 609-624. doi:10.1007/s00410-008-0356-3
- Huppert, H. E., Sparks, R. S. J., & Turner, J. S. (1982). Effects of Volatiles on Mixing in Calc-Alkaline Magma Systems. *Nature*, 297(5867), 554-557.
- 20 Kent, A. J. R., Blundy, J., Cashman, K. V., Cooper, K. M., Donnelly, C., Pallister, J. S., . . . Thornber, C. R. (2007). Vapor transfer prior to the October 2004 eruption of Mount St. Helens, Washington. *Geology*, 35(3). doi:10.1130/g22809a.1
- Kent, A. J. R., Darr, C., Koleszar, A. M., Salisbury, M. J., & Cooper, K. M. (2010). Preferential eruption of andesitic magmas through recharge filtering. *Nature Geoscience*, 3(9), 631-636. doi:10.1038/ngeo924
- 25 Koleszar, A. M., Kent, A. J. R., Wallace, P. J., & Scott, W. E. (2012). Controls on long-term low explosivity at andesitic arc volcanoes: Insights from Mount Hood, Oregon. *Journal of Volcanology and Geothermal Research*, 219-220, 1-14. doi:10.1016/j.jvolgeores.2012.01.003
- Luhr, J. F., Carmichael, I. S. E., & Varekamp, J. C. (1984). The 1982 eruptions of El Chichon Volcano, Chiapas, Mexico: mineralogy and petrology of the anhydrite-bearing pumices. *Journal of Volcanology and Geothermal Research*, 30 23, 69-108.

- Malfait, W. J., Seifert, R., Petitgirard, S., Perrillat, J.-P., Mezouar, M., Ota, T., . . . Sanchez-Valle, C. (2014). Supervolcano eruptions driven by melt buoyancy in large silicic magma chambers. *Nature Geoscience*, 7(2), 122-125. doi:10.1038/ngeo2042
- Mangler, M. F. Petrone, C.M., and Prytulak, J. (2022) Magma recharge patterns control eruption styles and magnitudes at Popocatépetl volcano (Mexico). *Geology*, 50, 366-370. <https://doi.org/10.1130/G49365.1>.
- 5 Martel, C. (2012). Eruption Dynamics Inferred from Microlite Crystallization Experiments: Application to Plinian and Dome-forming Eruptions of Mt. Pelee (Martinique, Lesser Antilles). *Journal of Petrology*, 53(4), 699-725. doi:10.1093/petrology/egr076
- Martin, V. M., Morgan, D. J., Jerram, D. A., Caddick, M. J., Prior, D. J., & Davidson, J. P. (2008). Bang! Month-scale eruption triggering at Santorini volcano. *Science*, 321(5893), 1178. doi:10.1126/science.1159584
- 10 Matthews, N. E., Huber, C., Pyle, D. M., & Smith, V. C. (2012). Timescales of Magma Recharge and Reactivation of Large Silicic Systems from Ti Diffusion in Quartz. *Journal of Petrology*, 53(7), 1385-1416. doi:10.1093/petrology/egs020
- Moran, S. C., Freymueller, J. T., LaHusen, R. A., McGee, K. A., Poland, M. P., Power, J. A., . . . White, R. A. (2008). Instrumentation Recommendations for Volcano Monitoring at U.S. Volcanoes under the National Volcano Early Warning System. USGS Scientific Investigations Report 2008-5114. <https://doi.org/10.3133/sir20085114>
- 15 Murphy, M. D., Sparks, R. S. J., Barclay, J., Carroll, M. R., Lejeune, A. M., Brewer, T. S., . . . Young, S. (1998). The role of magma mixing in triggering the current eruption at the Soufriere Hills Volcano, Montserrat, West Indies. *Geophysical Research Letters*, 25(18), 3433-3436. doi:10.1029/98gl00713
- 20 Nakamura, M. (1995). Continuous mixing of crystal mush and replenished magma in the ongoing Unzen eruption. *Geology*, 23(9). doi:10.1130/0091-7613(1995)023<0807:Cmocma>2.3.Co;2
- National Academies of Sciences, E., and Medicine. (2017). *Volcanic Eruptions and Their Repose, Unrest, Precursors, and Timing*. Washington, DC: The National Academies Press.
- 25 Pallister, J. S., Hoblitt, R. P., Meeker, G. P., Knight, R. J., & Siems, D. F. (1996). Magma Mixing at Mount Pinatubo: Petrographic and Chemical Evidence from the 1991 Deposits. In: eds) , vol. . In C. G. Newhall & R. S. Punonbayan (Eds.), *Fire and Mud: Eruptions and Lahars of Mount Pinatubo, Philippines* (pp. 687-732). Seattle, WA: University of Washington Press.
- Pallister, J. S., Hoblitt, R. P., & Reyes, A. G. (1992). A Basalt Trigger for the 1991 Eruptions of Pinatubo Volcano. *Nature*, 356, 426-428.
- 30

- Pankhurst, M. J., Morgan, D. J., Thordarson, T., & Loughlin, S. C. (2018). Magmatic crystal records in time, space, and process, causatively linked with volcanic unrest. *Earth and Planetary Science Letters*, 493, 231-241. doi:10.1016/j.epsl.2018.04.025
- Passarelli, L., & Brodsky, E. E. (2012). The correlation between run-up and repose times of volcanic eruptions. *Geophysical Journal International*, 188(3), 1025-1045. doi:doi:10.1111/j.1365-246X.2011.05298.x
- 5 Pinel, V., & Jaupart, C. (2000). The effect of edifice load on magma ascent beneath a volcano. *Philosophical Transactions of the Royal Society of London, A* 358, 1,515–511,532.
- Poland, M. P., & Anderson, K. R. (2020). Partly Cloudy With a Chance of Lava Flows: Forecasting Volcanic Eruptions in the Twenty-First Century. *Journal of Geophysical Research: Solid Earth*, 125(1). doi:10.1029/2018jb016974
- 10 Pritchard, M. E., Biggs, J., Wauthier, C., Sansosti, E., Arnold, D. W. D., Delgado, F., . . . Zoffoli, S. (2018). Towards coordinated regional multi-satellite InSAR volcano observations: results from the Latin America pilot project. *Journal of Applied Volcanology*, 7(1). doi:10.1186/s13617-018-0074-0
- Rae, A. S., Edmonds, M., Maclennan, J., Morgan, D., Houghton, B., Hartley, M. E., & Sides, I. (2016). Time scales of magma transport and mixing at Kīlauea Volcano, Hawai'i. *Geology*, 44(6), 463-466.
- 15 Rasmussen, D. J., Plank, T. A., Roman, D. C., Power, J. A., Bodnar, R. J., & Hauri, E. H. (2018). When does eruption run-up begin? Multidisciplinary insight from the 1999 eruption of Shishaldin volcano. *Earth and Planetary Science Letters*, 486, 1-14. doi:10.1016/j.epsl.2018.01.001
- Rougier, J., Sparks, R. S. J., Cashman, K. V., & Brown, S. K. (2018). The global magnitude–frequency relationship for large explosive volcanic eruptions. *Earth and Planetary Science Letters*, 482, 621–629.
- 20 Rubin, A. E., Cooper, K. M., Till, C. B., Kent, A. J. R., Costa, F., Bose, M., . . . Cole, J. (2017). Rapid cooling and cold storage in a silicic magma reservoir recorded in individual crystals. *Science*, 356(6343), 1154-1156. doi:10.1126/science.aam8720
- Ruprecht, P., Bergantz, G. W., & Dufek, J. (2008). Modeling of gas-driven magmatic overturn: Tracking of phenocryst dispersal and gathering during magma mixing. *Geochemistry Geophysics Geosystems*, 9(7), Q07017, doi: 07010.01029/02008GC002022.
- 25 Ruprecht, P., & Wörner, G. (2007). Variable regimes in magma systems documented in plagioclase zoning patterns: El Misti stratovolcano and Andahua monogenetic cones. *Journal of Volcanology and Geothermal Research*, 165(3), 142-162. doi:https://doi.org/10.1016/j.jvolgeores.2007.06.002
- Ruth, D. C., Costa, F., Bouvet de Maisonneuve, C., Franco, L., Cortés, J. A., & Calder, E. S. (2018). Crystal and melt inclusion timescales reveal the evolution of magma migration before eruption. *Nature Communications*, 9(1), 2657. https://doi.org/10.1038/s41467-018-05086-8. https://doi.org/10.1130/G37800.1
- 30

- Salisbury, M. J., Bohron, W. A., Clynne, M. A., Ramos, F. C., & Hoskin, P. (2008). Multiple Plagioclase Crystal Populations Identified by Crystal Size Distribution and in situ Chemical Data: Implications for Timescales of Magma Chamber Processes Associated with the 1915 Eruption of Lassen Peak, CA. *Journal of Petrology*, 49(10), 1755-1780. doi:10.1093/petrology/egn045
- 5 Saunders, K., Blundy, J., Dohmen, R., & Cashman, K. (2012). Linking petrology and seismology at an active volcano. *Science*, 336(6084), 1023-1027. doi:10.1126/science.1220066
- Shamloo, H. I., & Till, C. B. (2019). Decadal transition from quiescence to supereruption: petrologic investigation of the Lava Creek Tuff, Yellowstone Caldera, WY. *Contributions to Mineralogy and Petrology*, 174(4). doi:10.1007/s00410-019-1570-x
- 10 Sigurdsson, H. (2015). *The Encyclopedia of Volcanoes*, 2nd Edition. : Academic Press.
- Singer, B. S., Costa, F., Herrin, J. S., Hildreth, W., & Fierstein, J. (2016). The timing of compositionally-zoned magma reservoirs and mafic ‘priming’ weeks before the 1912 Novarupta-Katmai rhyolite eruption. *Earth and Planetary Science Letters*, 451, 125-137. doi:10.1016/j.epsl.2016.07.015
- Sisson, T. W., & Bacon, C. R. (1999). Gas-driven filter pressing in magmas. *Geology*, 27, 613-616.
- 15 Sparks, S. R. J., Sigurdsson, H., & Wilson, L. (1977). Magma mixing - mechanism for triggering acid explosive eruptions. *Nature*, 267(5609), 315-318.
- Tepley III, F. J., Davidson, J. P., & Clynne, M. A. (1999). Magmatic interactions as recorded in plagioclase phenocrysts of Chaos Crags, Lassen Volcanic Center, California. *Journal of Petrology*, 40(5), 787-806.
- Thomson, A., & MacLennan, J. (2013). The Distribution of Olivine Compositions in Icelandic Basalts and Picrites. *Journal of Petrology*, 54(4), 745-768. doi:Doi 10.1093/Petrology/Egs083
- 20 Till, C. B., Vazquez, J. A., & Boyce, J. W. (2015). Months between rejuvenation and volcanic eruption at Yellowstone caldera, Wyoming. *Geology*, 43(8), 695-698. doi:10.1130/g36862.1
- Tramontano, S., Gualda, G. A. R., & Ghiorso, M. S. (2017). Internal triggering of volcanic eruptions: tracking overpressure regimes for giant magma bodies. *Earth and Planetary Science Letters*, 472, 142-151. doi:10.1016/j.epsl.2017.05.014
- 25 Venezky, D. Y., & Rutherford, M. J. (1997). Pre-eruption conditions and timing of dacite-andesite magma mixing in the 2.2 ka eruption at Mount Rainier. *Journal of Geophysical Research: Solid Earth*, 02(B9), 20069-20086.
- Venezky, D. Y., & Rutherford, M. J. (1999). Petrology and Fe-Ti oxide reequilibration of the 1991 Mount Unzen mixed magma. *Journal of Volcanology and Geothermal Research*, 89(1-4), 213-230.
- 30 Viccaro, M., Ferlito, C., Cortesogno, L., Cristofolini, R., & Gaggero, L. (2006). Magma mixing during the 2001 event at Mt. Etna (Italy): effects on the eruptive dynamics. . *Journal of Volcanology and Geothermal Research*, 149, 139–159.

- Viccaro, M., Giuffrida, M., Zuccarello, F., Scandura, M., Palano, M., & Gresta, S. (2019). Violent paroxysmal activity drives self-feeding magma replenishment at Mt. Etna. *Scientific Reports*, 9(1), 6717.
- Wasserstein, R. L., & Lazar, N. A. (2016). The ASA Statement on p-Values: Context, Process, and Purpose. *The American Statistician*, 70(2), 129-133. doi:10.1080/00031305.2016.1154108
- 5 Wotzlaw, J.-F., Schaltegger, U., Frick, D. A., Dungan, M. A., Gerdes, A., & Günther, D. (2013). Tracking the evolution of large-volume silicic magma reservoirs from assembly to supereruption. *Geology*. doi:10.1130/g34366.1

FIGURE CAPTIONS

Figure 1. Summary of the observed characteristics of volcanic eruptions initiated by different mechanisms. Each
10 histogram shows results as percent of total within individual categories: (A) Erupted volume, (B) Eruption style, (C)
Erupted composition, (D) Eruption initiation timescale.

Figure 2. Comparison of estimated eruption initiation timescales for different eruption initiation mechanisms. The
letter next to each eruption refers to the dominant composition of erupted material (see legend).

15

Figure 3. Schematic representation of how eruption characteristics (eruption style, volume, composition, and estimated
eruption initiation timescale) vary with different eruption initiation mechanisms. Arrows represent movement of mafic
“M” and felsic “F” magma from deeper within the magma plumbing system.

20 Figure 4. Comparison of petrologic eruption initiation timescales vs. volcano monitoring run-up timescales for
eruptions in our literature compilation. Each eruption is represented as the range of relevant timescales recorded by
both approaches, color coded by the eruption initiation mechanism. As an initiation mechanism, mafic rejuvenation has
the most data available for this comparison, as well the best agreement between the two timescales, suggesting the
monitoring signals are more likely recording the same event(s) as the petrologic signals. The limited data for mafic
25 recharge suggests the monitoring signals records events prior to the petrologic signals. There are insufficient data on
eruptions initiated by either felsic rejuvenation or volatile accumulation to make a similar assessment. Sources for run-
up times from geophysical studies are from Passarelli & Brodsky (2012), Rae et al., (2016), Rasmussen et al. (2018),
Ruth et al. (2018), and Viccaro et al. (2019). All initiation times (from diffusion or other) are from our literature
compilation for the same eruption.

30

TABLES

Table 1. Selected categorical variables for recorded parameters.

Parameters	Categories					
Volume	< 1 km ³	1 - 10 km ³	10 - 100 km ³	> 100 km ³		
Dichotomized Volume	< 1 km ³	≥ 1 km ³				
Timescale	Days or less	Weeks	Months	Years	Decades	Centuries or greater
Dichotomized Timescale	Months or less	Years or greater				
Eruption Style	Extrusive	Explosive				
Composition	Basalt	Andesite	Dacite	Rhyodacite and Rhyolite	Other	
Dichotomized Composition	Mafic (Basalt + Basaltic Andesite)	Felsic (Andesite, Dacite, Rhyodacite, Rhyolite)				

5

Table 2. Results of Fisher Exact test of the 4 x 2 contingency table. P represents the probability of generating the observed distribution of a given characteristic between different eruption initiation mechanisms if the null hypothesis is correct.

Comparison	P
Eruption Style	0.006
Erupted Volume	0.098
Initiation Timescale	<0.001
Erupted Composition	<0.001

5

Table 3. Summary of P values determined for the 2 x 2 contingency table for eruption initiation timescale (\leq months vs. \geq years). P represents the probability of generating the observed distribution in each pairwise comparison if the null hypothesis (that no difference in proportions between each pair of eruption initiation mechanisms) is correct. Grey highlights comparisons where $P < 0.05$.

10

<i>Eruption Initiation Timescale</i>			
	Felsic Rejuvenation	Mafic Rejuvenation	Mafic Recharge
Mafic Rejuvenation	0.004		
Mafic Recharge	0.55	<0.001	
Volatile Accumulation	1.00	0.06	1.00

Table 4. Summary of P values determined for 2 x 2 contingency table for erupted volume ($< 1 \text{ km}^3$ vs. $\geq 1 \text{ km}^3$). P represents the probability of generating the observed distribution in each pairwise comparison if the null hypothesis (that no difference in proportions between each pair of eruption initiation mechanisms) is true. Grey highlights comparisons where $P < 0.05$.

<i>Erupted Volume</i>			
	Felsic Rejuvenation	Mafic Rejuvenation	Mafic Recharge
Mafic Rejuvenation	0.10		
Mafic Recharge	1.00	0.03	
Volatile Accumulation	1.00	0.59	0.65

5

Table 5. Summary of P values determined for 2 x 2 contingency table for eruption style (extrusive vs. explosive). P represents the probability that the observed data supports accepting the null hypothesis that no difference in eruption type exists between the pairs of eruption initiation mechanisms shown. Grey highlights comparisons where $P < 0.05$

10

<i>Eruption Style</i>			
	Felsic Rejuvenation	Mafic Rejuvenation	Mafic Recharge
Mafic Rejuvenation	0.004		
Mafic Recharge	0.37	0.03	
Volatile Accumulation	1.00	0.03	0.37

Table 6. Summary of P values determined for 2 x 2 contingency tables for erupted composition (mafic vs. felsic). P represents the probability that the observed data supports accepting the null hypothesis that no difference in erupted composition exists between the pairs of eruption initiation mechanisms shown. Grey highlights comparisons where $P < 0.05$

15

<i>Erupted Composition</i>			
	Felsic Rejuvenation	Mafic Rejuvenation	Mafic Recharge

Mafic Rejuvenation	<0.001		
Mafic Recharge	1.00	<0.001	
Volatile Accumulation	0.23	<0.001	0.13

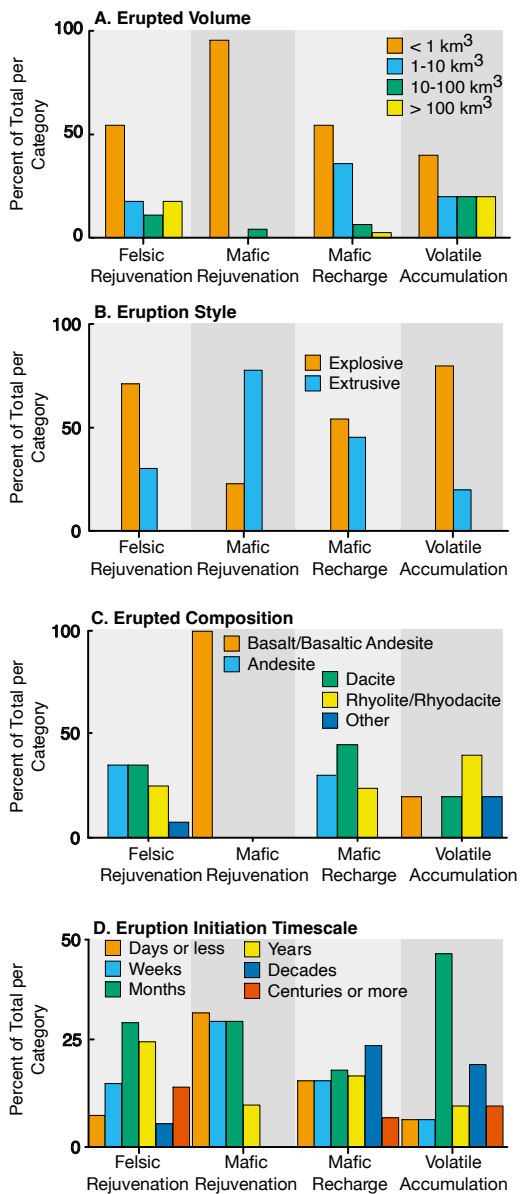


Figure 1. Summary of the observed characteristics of volcanic eruptions initiated by different mechanisms. Each histogram shows results as percent of total within individual categories: (A) Erupted volume, (B) Eruption style, (C) Erupted composition, (D) Eruption initiation timescale.

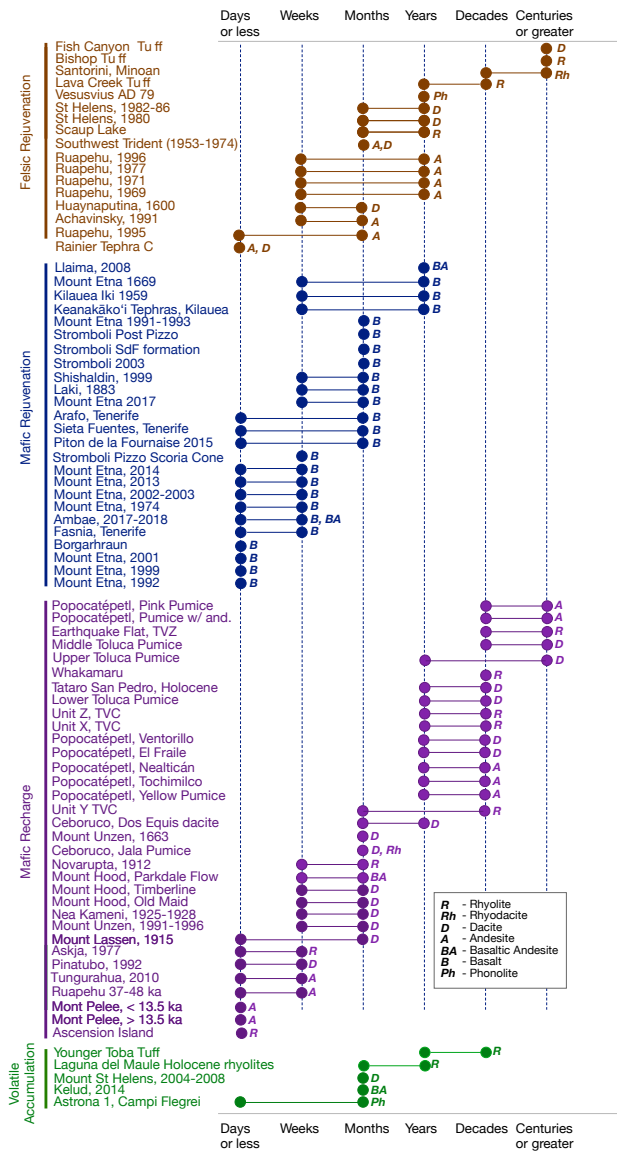


Figure 2. Comparison of estimated eruption initiation timescales for different eruption initiation mechanisms. The letter next to each eruption refers to the dominant composition of erupted material (see legend).

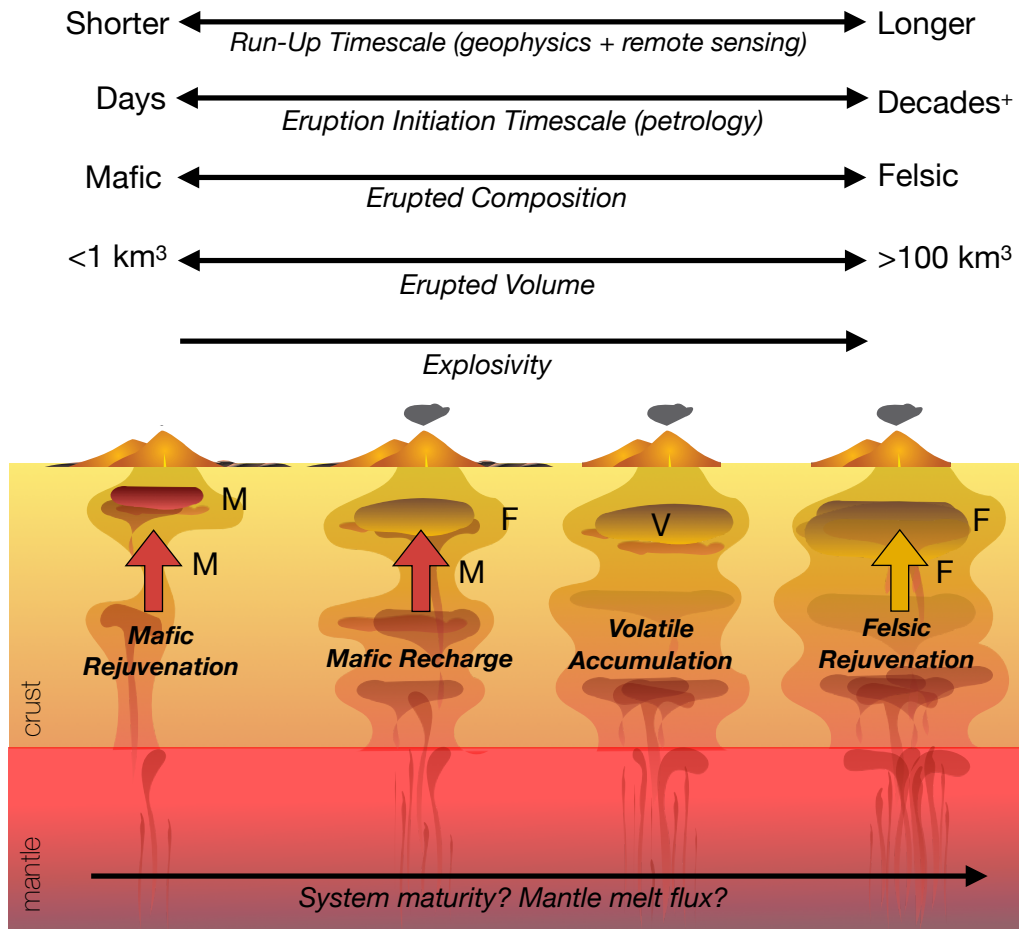


Figure 3. Schematic representation of how eruption characteristics (eruption style, volume, composition, and estimated eruption initiation timescale) vary with different eruption initiation mechanisms. Arrows represent movement of mafic “M” and felsic “F” magma from deeper within the magma plumbing system.

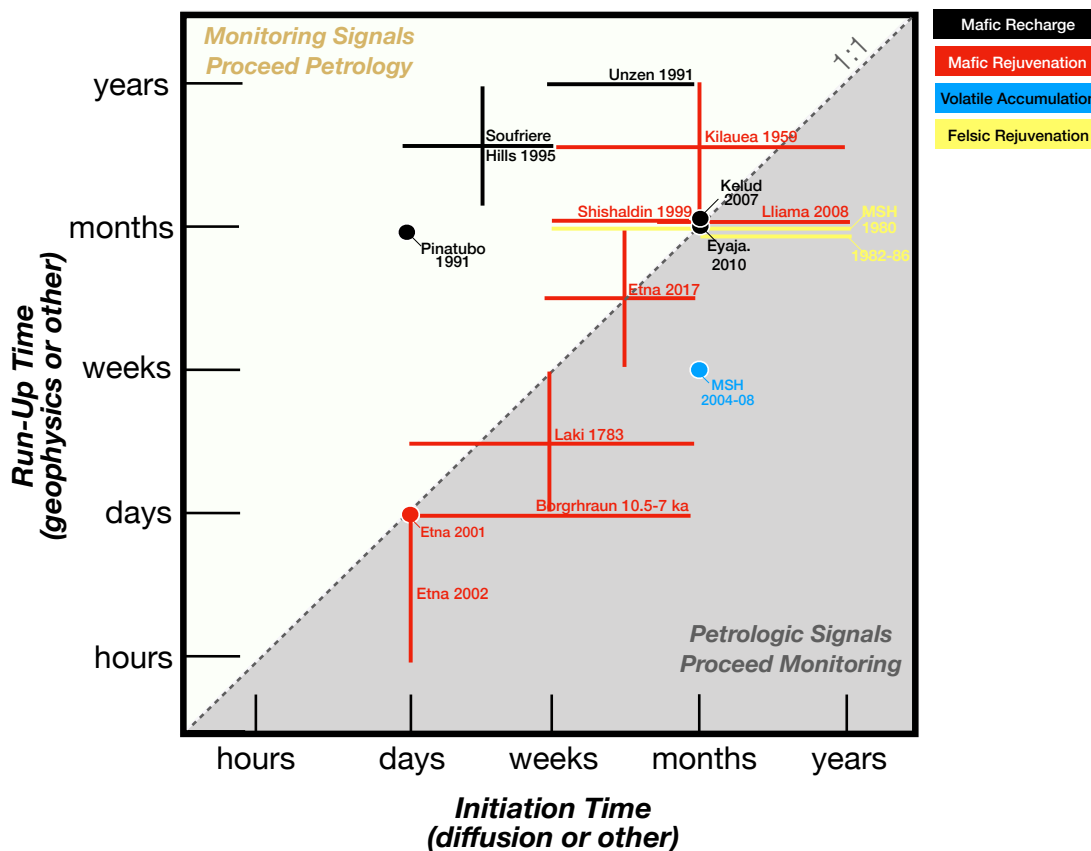


Figure 4. Comparison of petrologic eruption initiation timescales vs. volcano monitoring run-up timescales for eruptions in our literature compilation. Each eruption is represented as the range of relevant timescales recorded by both approaches, color coded by the eruption initiation mechanism. As an initiation mechanism, mafic rejuvenation has the most data available for this comparison, as well the best agreement between the two timescales, suggesting the monitoring signals are more likely recording the same event(s) as the petrologic signals. The limited data for mafic recharge suggests the monitoring signals records events prior to the petrologic signals. There are insufficient data on eruptions initiated by either felsic rejuvenation or volatile accumulation to make a similar assessment. Sources for run-up times from geophysical studies are from Passarelli & Brodsky (2012), Rae et al., (2016), Rasmussen et al. (2018), Ruth et al. (2018), and Viccaro et al. (2019). All initiation times (from diffusion or other) are from our literature compilation for the same eruption.