

1 This manuscript is a **preprint** and has been submitted to **Tectonics**. This manuscript has not  
2 undergone peer-review. Subsequent versions of the manuscript may have different content. If  
3 accepted, the final version of this manuscript will be available via the “Peer-reviewed  
4 Publication” DOI link on the right-hand side of this webpage. Please feel free to contact any of  
5 the authors directly to comment on the manuscript.  
6  
7  
8  
9  
10  
11  
12  
13  
14  
15  
16  
17  
18  
19  
20  
21  
22  
23  
24  
25  
26  
27  
28  
29  
30  
31  
32  
33  
34  
35  
36  
37  
38  
39  
40  
41  
42  
43  
44  
45  
46

47  
48  
49  
50  
51  
52  
53  
54  
55  
56  
57  
58  
59  
60  
61

## The kinematics of growth faults and the role of lateral tip retreat

**Bailey A. Lathrop<sup>1</sup>, Christopher A.-L. Jackson<sup>1</sup>, Rebecca E. Bell<sup>1</sup>, Atle Rotevatn<sup>2</sup>**

<sup>1</sup> Basins Research Group (BRG), Department of Earth Science & Engineering, Imperial College,  
Prince Consort Road, London, SW7 2BP, UK

<sup>2</sup> Department of Earth Science, University of Bergen, PO Box 7800, 5020 Bergen, Norway

Corresponding author: Bailey Lathrop (b.lathrop17@imperial.ac.uk)

### **Key Points:**

- We document normal fault growth in the Exmouth Plateau, Offshore Australia
- Faults follow a three stage growth model: lengthening stage, throw accumulation stage, tip retreat stage
- We suggest that tip retreat could be an important stage of normal fault growth

## 62 **Abstract**

63 Understanding how normal faults grow is key to determining the tectono-stratigraphic evolution  
64 of rifts and the distribution and size of potentially hazardous earthquakes. According to recent  
65 studies, normal faults tend to grow in two temporally distinct stages: a lengthening stage,  
66 followed by a throw/displacement accumulation stage. However, this model is still debated and  
67 not widely supported by many additional studies. Relatively few studies have investigated what  
68 happens to a fault as it becomes inactive, i.e. does it abruptly die, or does its at-surface trace-  
69 length progressively shorten by so-called tip retreat? We here use a 3D seismic reflection dataset  
70 from the Exmouth Plateau, offshore Australia to develop a three-stage fault growth model for  
71 seven normal faults of various sizes, and to show how the throw-length scaling relationship  
72 changes as a fault dies. We show that during the lengthening stage, which lasted <30% of the  
73 faults life, faults reached their near-maximum lengths, yet accumulated only 10-20% of their  
74 total throw. During the throw/displacement accumulation stage, which accounts for c. 30-75% of  
75 the faults life, throw continued to accumulate along the entire length of the faults. All of the  
76 studied faults also underwent a stage of lateral tip-retreat (last c. 25% of the faults lives), where  
77 the active at-surface trace-length decreased by up to 25%. This work has implications for our  
78 understanding of the temporal evolution of normal faults, in particular how they grow and how  
79 they die, with the final stage of tip retreat typically being absent from more fault growth models.

## 80 **1 Introduction**

81 Normal fault growth models have been widely debated over the past c. 20 years. The  
82 propagating fault model, also referred to as the isolated fault model (Walsh et al., 2003), suggests  
83 that normal faults grow via a synchronous increase in length and displacement, i.e. that when  
84 faults lengthen they also accumulate displacement. Faults can also lengthen via tip propagation

85 and linkage of these individual segments (e.g. Cartwright et al., 1995; Dawers et al., 1993;  
86 Morley et al., 1990; Walsh et al., 2003; Walsh & Watterson, 1988). The constant-length model  
87 instead suggests that normal faults reach their near-final lengths relatively rapidly and spend the  
88 rest of their lives accruing displacement without further significant lengthening (Childs et al.,  
89 2017; Fossen & Rotevatn, 2016; Hemelsdaël & Ford, 2016; Henstra et al., 2015; Jackson and  
90 Rotevatn, 2013; Nicol et al., 2005, 2016; Tvedt et al., 2016; Walsh et al., 2002, 2003; see also  
91 Cowie et al., 1998). However, Jackson et al. (2017) and Rotevatn et al. (2019) propose that the  
92 propagating fault model and the constant-length models may not in fact be mutually exclusive,  
93 end-member models, but instead represent discrete kinematic phases in the life of a single fault.  
94 The hybrid growth model combines both and states that faults grow in two stages: the  
95 lengthening stage (propagating fault stage) and the displacement accrual stage (constant-length  
96 stage) (Jackson et al., 2017; Rotevatn et al., 2019). According to the hybrid model proposed by  
97 Rotevatn et al., (2019), during the lengthening stage, which encompasses c. 20-30% of the  
98 duration of a faults life, faults reach their near-final length via the propagation and linkage of  
99 relatively small, discrete segments; during this time, the fault accumulates 10-60% of its total  
100 displacement. During the displacement accrual stage, which takes place during the latter 70-80%  
101 of the faults life, the fault accumulates 40-90% of its total displacement (Jackson et al., 2017;  
102 Rotevatn et al., 2019). Examples of normal faults with preserved, seismically well-imaged  
103 growth strata to provide reliable kinematic constraints on fault growth are rare, thus the hybrid  
104 growth model (and the component propagating and constant-length stages) has only rarely been  
105 tested. Such tests are needed if we are to fully understand normal fault growth.

106           Whereas many studies have investigated how normal faults initiate and grow (see above),  
107 few have considered what happens at the end of a faults life. These few studies propose that

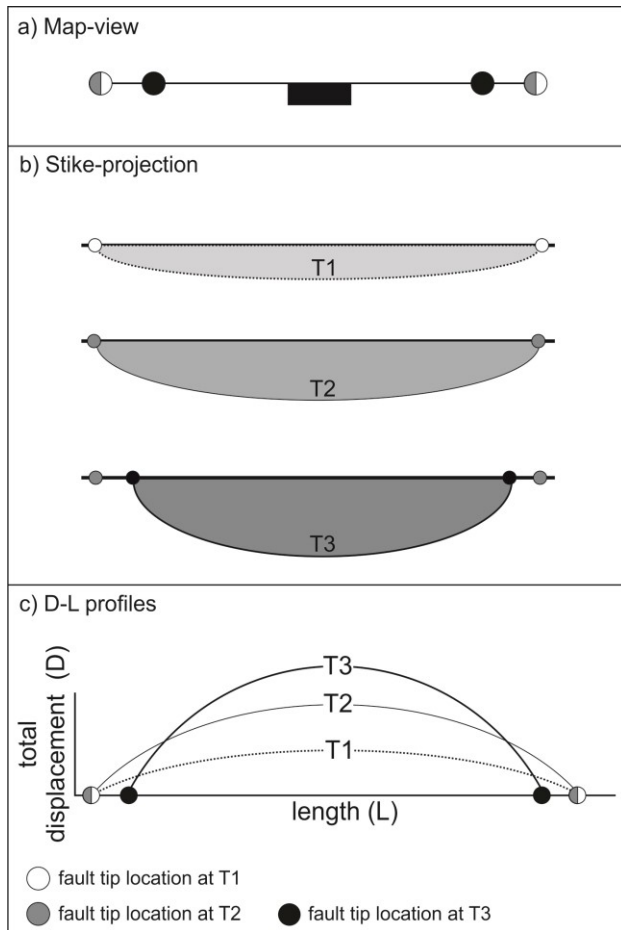
108 faults die in two general ways: the entire trace-length of the fault remains active before slip  
109 ceases, or that, as the fault dies, activity is focused onto the centre of the fault, leading to a  
110 progressively shorter active fault trace-length (Childs et al., 2003; Meyer et al., 2002). In the  
111 latter case, normal faults experience a stage of fault tip retreat, i.e., the lateral tip regions do not  
112 accumulate further displacement or throw as strain is localized near the fault centre (Figure 1;  
113 Meyer et al., 2002). In 3D seismic reflection data, tip retreat can be observed by identifying  
114 packages of growth strata that are deposited over progressively shorter along-strike lengths as the  
115 fault reaches the end of its life (Meyer et al., 2002). Tip retreat has also been interpreted as a  
116 result of relay breaching during segment linkage (Childs et al., 2003); however, this is not the  
117 style of tip retreat we identify in this study.

118         Relatively few studies have discussed the role tip retreat plays in the evolution of normal  
119 faults (Childs et al., 2003; Freitag et al., 2017; Meyer et al., 2002; Morley, 2002), and it is  
120 therefore not usually included in fault growth models. This likely reflects the fact it is very  
121 difficult or sometimes impossible to constrain the kinematics of normal faults, for example in  
122 cases where growth strata are absent and/or only locally preserved. To the best of our  
123 knowledge, tip retreat has also not yet been the focus of or identified in, physical or numerical  
124 models. Freitag et al., (2017) show an example of tip retreat in the Columbus Basin, offshore  
125 Trinidad; these are, however, thin-skinned, gravity-driven faults, and it is not clear if the  
126 kinematics would apply to thick-skinned faults offsetting crystalline basement. Morley (2002)  
127 also show an example of possible tip retreat in the East African Rift, but since this is a sediment-  
128 starved (i.e. underfilled) basin, it is difficult to tell if the fault really experienced tip retreat, or  
129 whether the observed geometries simply reflect post-fault death passive filling of hanging wall  
130 accommodation. We seek to provide the first well-constrained examples of tip retreat occurring

131 on basement-involved normal faults, as well as guidance on how to identify this important  
132 process in the rock record.

133         In this paper, we use 3D seismic reflection and borehole data from the Exmouth Plateau,  
134 offshore Australia to study the kinematics of basement-involved normal faults. More specifically  
135 we: 1) constrain the temporal relationship between fault lengthening and displacement; and 2)  
136 investigate the role of tip retreat as faults become inactive. This is an excellent place to study this  
137 process because synsedimentary normal faults are well-preserved, age-constrained, and well-  
138 imaged in excellent-quality, open-source, 3D seismic reflection data. The rift basin was also  
139 overfilled for much of the duration of faulting, meaning the faults are flanked by well-developed  
140 growth (syn-tectonic) strata.

141



142

143 **Figure 1.** Conceptual models for the development of normal faults following a “hybrid fault  
 144 model” (Rotevatn et al., 2019) with a stage of tip retreat. Time 1 (T1) represents the  
 145 lengthening/propagating fault model stage, Time 2 (T2) represents the displacement  
 146 accumulation/constant-length model stage, and Time 3 (T3) represents a phase of fault tip-line  
 147 retreat. **a)** map view of the active fault trace line at T1-3. Note that the fault reaches its maximum  
 148 length at T1, and has a shorted active trace line at T3. **b)** along-strike projection of throw at T1-3.  
 149 An increasing amount of displacement is accumulated at each stage. **c)** Displacement/length  
 150 profile at T1-3.

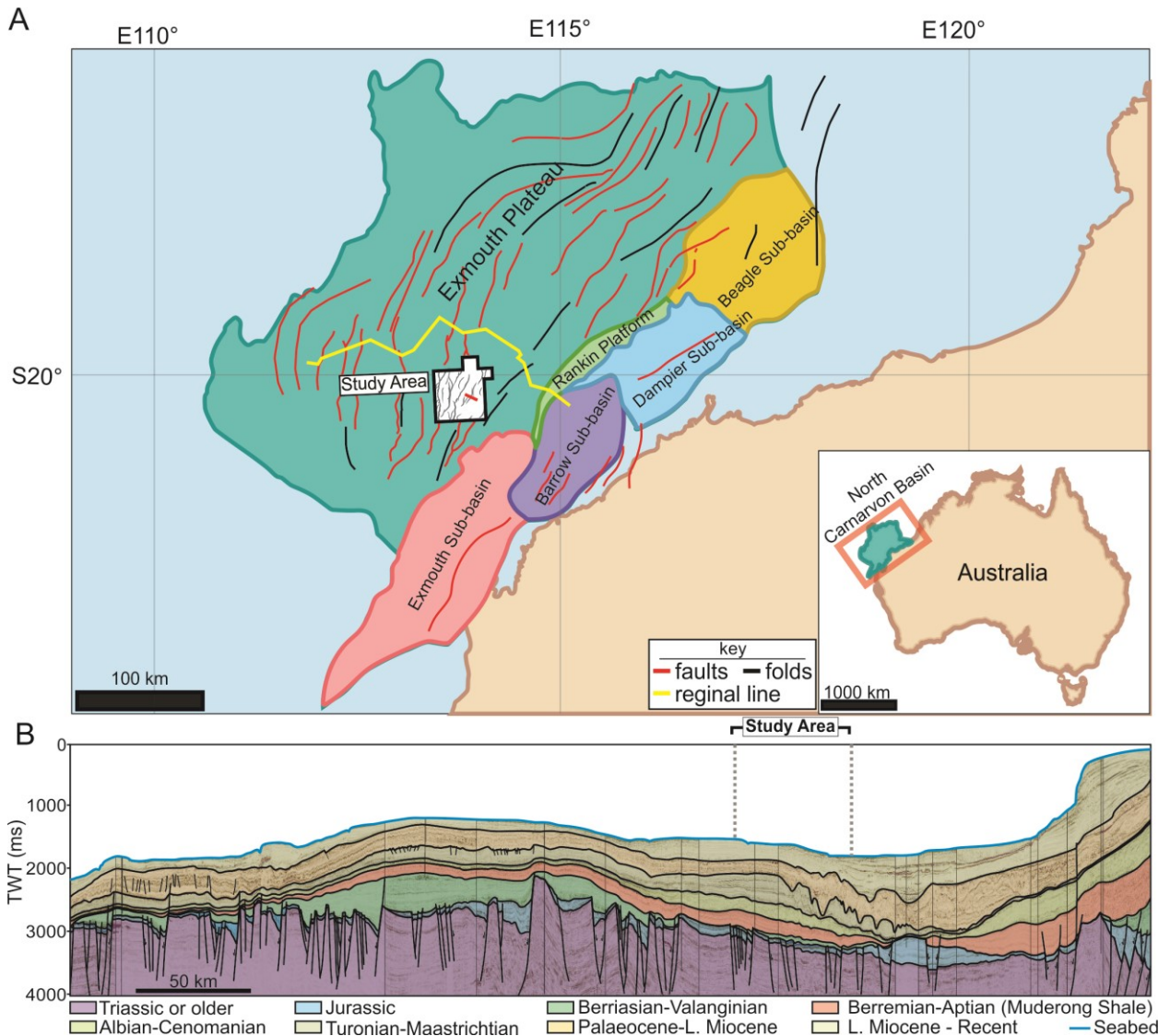
151 **2 Geologic setting of the Exmouth Plateau**

152 Our study area is located on the Exmouth Plateau, North Carnarvon Basin, offshore NW  
 153 Australia (Figure 2). The North Carnarvon Basin formed due to rifting in the Late  
 154 Carboniferous-Permian as a result of the breakup of Pangea, and the Exmouth Plateau formed as  
 155 a result of rifting between Greater India and Australia, creating NE-trending blocks (Gibbons et  
 156 al., 2012; Longley et al., 2002; Stagg & Colwell, 1994). The Exmouth Plateau is located in the

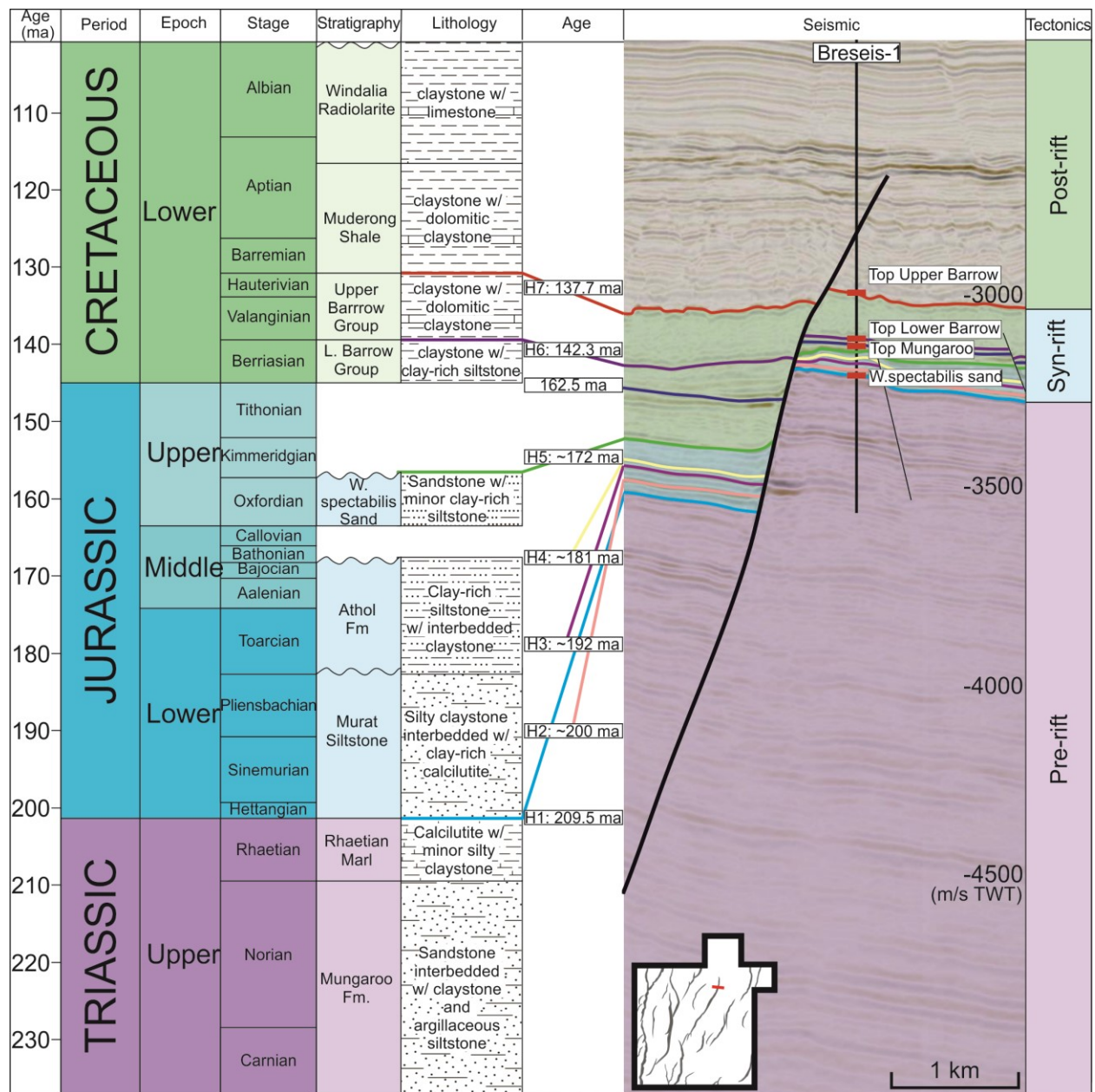
157 northern part of the North Carnarvon Basin, bounded by the continental shelf to the southeast,  
158 and the Curvier, Gascoyne, and Argo abyssal plains to the SW, SW, and NE, respectively  
159 (Longley et al., 2002). The Exmouth Plateau is a block of thin crystalline crust, and based on  
160 geophysical evidence, it has been suggested that the Exmouth Plateau basement is continental  
161 crust, however this has not been confirmed by direct sampling (Stagg et al., 2004). The  
162 crystalline basement is overlain by a thick pre-rift succession, consisting of the fluvial-deltaic to  
163 marginal marine, Mungaroo Formation (Triassic) (Longley et al., 2002; Stagg et al., 2004).

164         The synrift extension began in the Late Triassic (Rhaetian) until Late Jurassic  
165 (Oxfordian), during which time the Murat and Athnol siltstones were deposited in a sediment-  
166 starved basin (Figure 3) (Longley et al., 2002; Tindale et al., 1998). After a short period of  
167 tectonic quiescence in the Late Jurassic, rifting continued in the Early Cretaceous in an over-  
168 filled basin environment, during which time marine claystones (Dingo Claystone) and coarser-  
169 grained, deltaic clastics (Barrow Group) were deposited (Longley et al., 2002). Rifting in the  
170 Exmouth Plateau ceased in the Hauterivian, and the area became a passive margin (Gibbons et  
171 al., 2012; Longley et al., 2002). In this paper, we focus on the Jurassic-Early Cretaceous, syn-  
172 sedimentary normal faults which are generally trending N- NE.





173 **Figure 2.** Study area **a)** location of the Exmouth Plateau in the North Carnarvon Basin, offshore  
 174 Australia, **b)** Regional 2D seismic line across the study area, modified from Nugraha et al.,  
 175 (2019).  
 176



177  
 178 **Figure 3.** Stratigraphic framework showing the key interpreted seismic horizons, their ages, and  
 179 the tectonic evolution of the Exmouth Plateau (H=horizon). Ages for H1, H5, H6, and H7 were  
 180 taken from Marshal and Lang (2013), and H2, H3, and H4 are relative dates assuming constant  
 181 sedimentation. Information on the tectonostratigraphic framework are from Bilil et al., (2018)  
 182 and Geoscience Australia.

## 183 **3 Data**

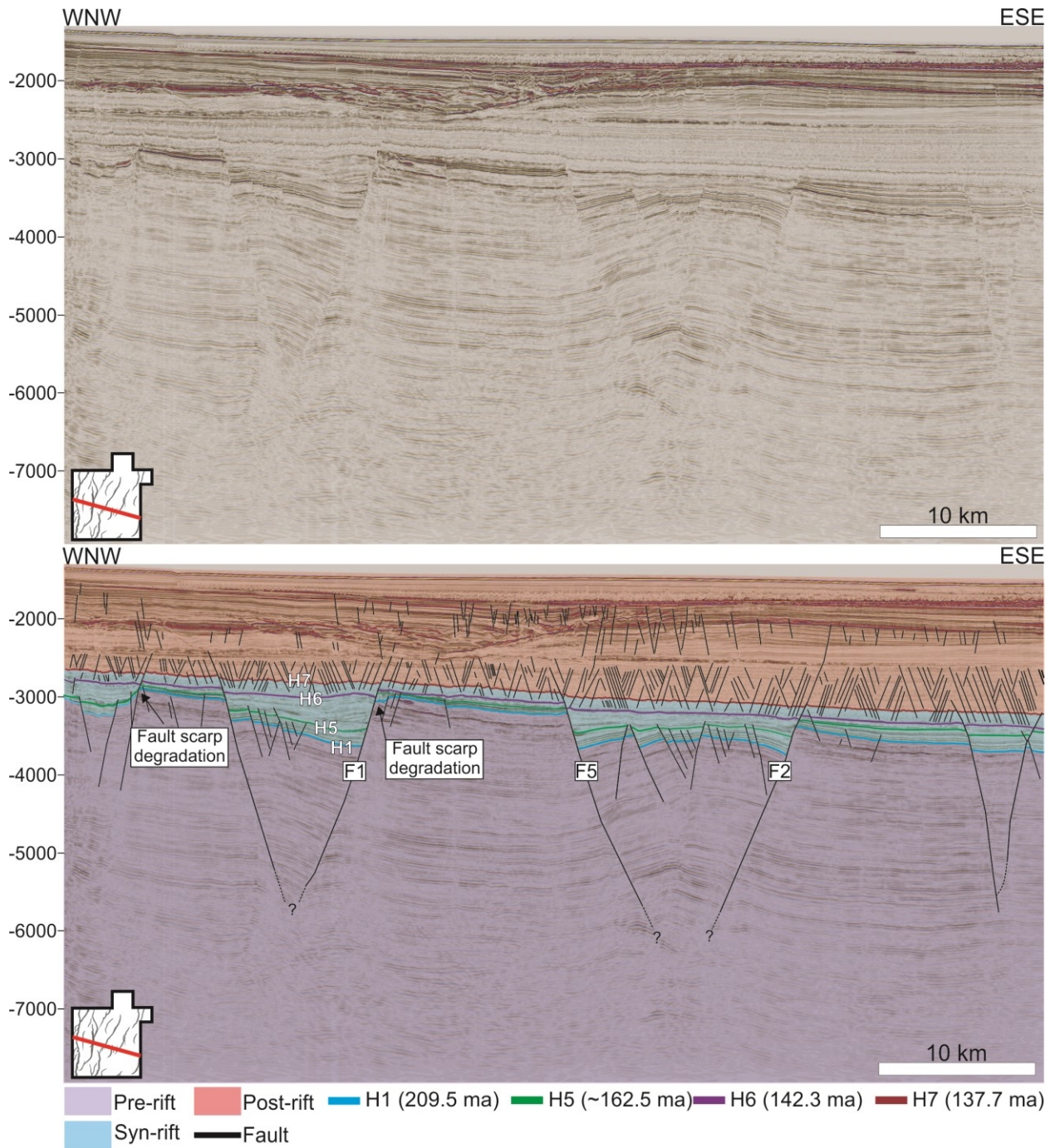
### 184 **3.1 Data**

185 The Glencoe dataset is a 3D time-migrated seismic reflection survey that encompasses  
186 approximately 3900 km<sup>2</sup> of the Kangaroo syncline in the Exmouth Plateau (Figure 4). It has a  
187 bin spacing of 25 m and a record length of 8 s two-way time (TWT). The vertical and horizontal  
188 resolution are approximated by a quarter of the dominant wavelength of the data, yielding c. 6.6  
189 m ( $\lambda=26.3$  m) within the syn-rift sediments (Brown, 2011). Seismic sections are displayed with  
190 normal polarity (SEG European Convention; Brown, 2011), where increase in acoustic  
191 impedance is represented by a peak (red), and an decrease by a trough (black). Seismic inlines  
192 are orientated WNW-ESE and the survey is tied to four wells (Glencoe-1, Nimblefoot-1,  
193 Warrior-1, and Breseis-1). Well-logs, formation tops, and biostratigraphic ages were provided  
194 with the wells. All seismic and well data are open-access and available from Geoscience  
195 Australia.

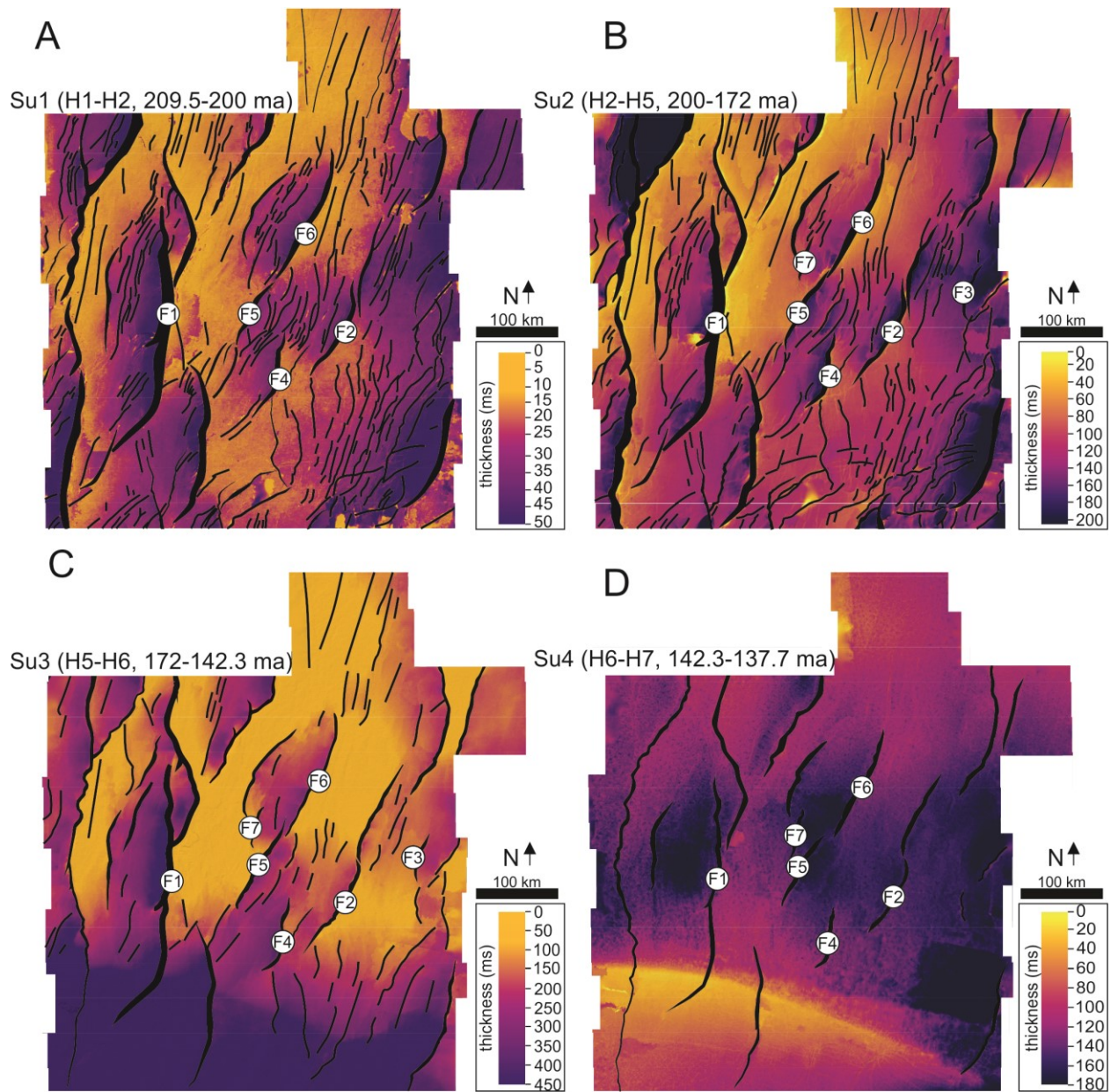
196 We have mapped seven regionally extensive seismic horizons (H1-7); H1, H6, and H7  
197 are age-constrained well-tied horizons with ages from well reports, as well as ages obtained by  
198 Marshall & Lang (2013) using biostratigraphy from 1500 wells around the North Carnarvon  
199 Basin (Figure 3). We lack direct age-constraints for H2-5, thus we estimated their ages by  
200 assuming a constant sedimentation rate between horizons of known ages (Figure 3). We also  
201 locally picked additional horizons within the syn-sedimentary deposits (e.g. H5.5) that are not  
202 continuous across the entire dataset; we estimated their ages based on an assumption of constant  
203 sedimentation rates between overlying and underlying, age-constrained horizons. We mapped  
204 and analyzed seven faults of varying sizes (8.8-42 km long, with 165-680 m of throw) to show



205 how faults of different sizes grow in the area, and to see if the styles of fault growth are scale  
 206 dependent (see Figure 5 for fault locations).



208 **Figure 4.** Representative seismic line in TWT across the central section of the 3D dataset, along  
 209 strike of the studied faults. Data is show with and without interpretation.



210

211 **Figure 5.** Representative isochrons of the study area with interpreted major and minor faults  
 212 labeled. **a)** Seismic Unit 1: Horizon 1-2, 209.5-196 ma, **b)** Seismic Unit 2: Horizon 2-5, 196-  
 213 162.5 ma, **c)** Seismic Unit 3, Horizon 5-6. 162.5-142.3 ma , **d)** Seismic Unit 4, horizon 6-7.  
 214 142.3-137.7 ma.

215 **3.2 Methodology**

216 In this study we used four different methods to quantify fault growth: isochron analysis,  
 217 throw backstripping, and expansion index (EI) analysis (see review by Jackson et al. 2017). First,



218 we created time-thickness (isochron) maps of key stratigraphic intervals, which illustrate  
219 variations in sediment thickness. This highlights across-fault hanging wall thickening, which can  
220 reveal the growth history of a fault (e.g. Jackson & Rotevatn, 2013). Isochron analysis was done  
221 first in order to establish the general style of fault growth (i.e. a propagating, constant-length, or  
222 hybrid fault growth model), and then we conducted throw backstripping to be able to see exact  
223 fault throw and length through time in the faults life (Jackson et al., 2017). To begin throw  
224 backstripping, we created throw-length (T-x) plots by picking the hanging wall and footwall  
225 cutoffs for every chosen horizon across the length of the faults (appendix figures 1-3). In the case  
226 of folding or erosion (Figure 4), horizons used to calculate throw were projected across the fold  
227 or eroded fault scarp (e.g. Wilson et al., 2013). Throw backstripping involves subtracting the  
228 throw of a shallower horizon directly from the throw of a deeper horizon at the same along-strike  
229 position, with this being repeated for successively deeper horizons (Chapman & Meneilly, 1991;  
230 Peterson et al., 1992). We opted to use the “original method” of throw backstripping, where  
231 throw across different horizons is simply subtracted, as we did not want to make any  
232 assumptions about the style of fault growth (see Jackson et al., 2017 for more details on fault  
233 displacement backstripping methods). Finally, we used EI analysis to measure variations in  
234 stratal thickness across the fault by dividing the thickness of hanging wall stratal unit by that of  
235 the equivalent unit in the footwall (Bouroullec et al., 2004; Cartwright et al., 1998; Jackson et al.,  
236 2017; Thorsen, 1963) (See appendix figure 4). This technique shows the formation and growth of  
237 depocenters, and therefore how the faults lengthened (Jackson & Rotevatn, 2013).

238 We also calculated vertical throw gradients by dividing the change in throw by the  
239 change in depth of the shallowest two horizons offset across the fault. We calculated upper-tip  
240 throw gradients in order to demonstrate that the top of the fault was interacting with the free

241 surface rather than acting as a blind fault; this is important when trying to understand if faults  
242 experienced real tip-line retreat or not (Childs et al., 2003; Walsh & Watterson, 1988). Finally,  
243 we calculated fault slip rates by dividing displacement for a particular time period by the  
244 duration of that time period; this was done in order to investigate whether slip rates varied  
245 between the different stages of fault growth.

246 Since the basin was sediment-starved from the Early Jurassic until the Late Jurassic, as  
247 evidenced by the fault scarp degradation until the deposition of H5 (Figures 4, 6a, and 8a), our  
248 fault lengthening calculations are upper limit estimations. For example, if active faulting created  
249 hanging wall accommodation but the basin was sediment starved, this accommodation would  
250 have remained unfilled. Thus, what looks like tip propagation could just be prolonged filling of  
251 the hanging wall of an inactive normal fault (see Jackson et al., 2017). It is therefore possible that  
252 the faults reached their maximum lengths even quicker than what we estimate.

253 We use checkshot (velocity) data from our four wells to convert throw values from  
254 milliseconds two-way time (ms TWT) to depth (m) (see appendix figure 5). Throw values are  
255 presented in metres. Burial-related compaction of sedimentary rocks can result in throw  
256 calculations being underestimated, especially when rocks have a high shale content or are deeply  
257 buried (>2 km; see Taylor et al., 2008). Decompression typically decreases throw estimates by  
258 <20% (Taylor et al., 2008), so we here give all throw and slip rate values an error to account for  
259 maximum of 20% decompaction.

## 260 **4 Results**

261 We have completed a comprehensive geometric and kinematic analysis of seven faults of  
262 various sizes (appendix figures 1-4). We first provide a detailed description of the geometry of  
263 three faults (and their related growth strata) that are representative of the various fault sizes

264 identified in the study area, before describing their kinematics. Fault 1 (F1) represents the largest  
265 studied fault, Fault 2 (F2) represents a mid-sized fault, and Fault 3 (F3) represents the smallest  
266 studied fault in the dataset. We then present and discuss the results for all of the studied faults.

## 267 **4.1 Fault 1**

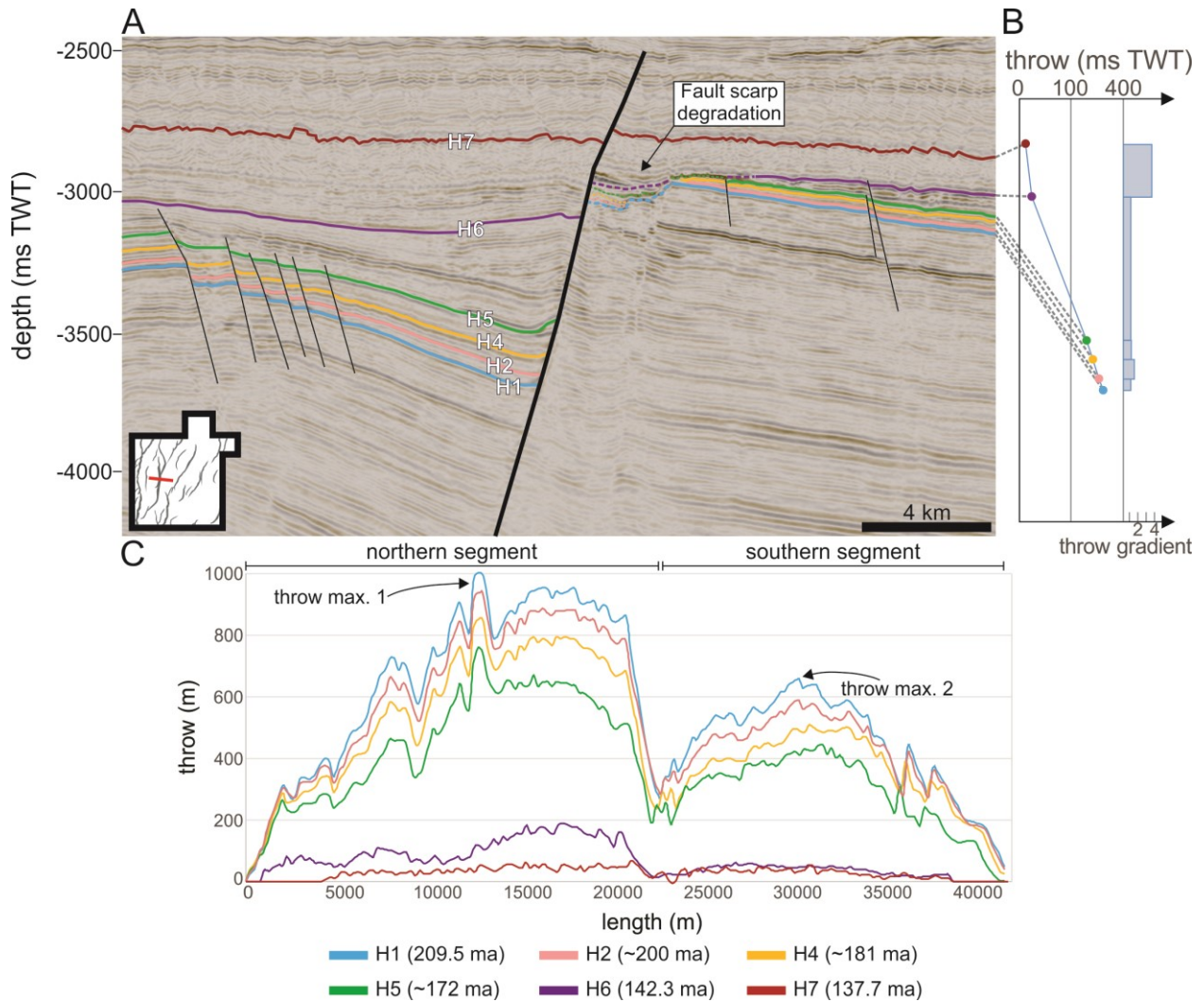
### 268 **4.1.1 Observations:**

269 Fault 1 (F1), the largest fault in the dataset that has both of its tips imaged, it is ~42 km  
270 long, strikes N-S, and dips to the E. Based on along-strike changes in strike and throw (Figure  
271 6c), we split F1 into a 24 km-long northern segment and an ~18 km-long southern segment  
272 (Figures 5 and 6). The upper tip-line of F1 is located in Lower Cretaceous strata, where it  
273 physically links to a tier of polygonal faults (Velayatham et al., 2019) (Figure 4), and its lower  
274 tip-line is difficult to locate due to poor seismic imaging in the pre-rift, but F1 appears to tip out  
275 deep in the study area or into the basement (Figure 4). F1 shows two clear throw maxima; a  
276 northern maximum (680 ms TWT <sup>{+136}</sup> or 1000 m <sup>{+200}</sup> at H1; error shows possible  
277 decompaction) near the centre of the northern fault segment, and a southern maximum (433 ms  
278 TWT <sup>{+87}</sup>, 658 m <sup>{+132}</sup> at H1) near the centre of the southern fault segment. Both segments are  
279 generally characterised by approximately bell-shaped throw distributions, the peak of which is  
280 skewed away from the center due to the related throw maxima being offset from the fault  
281 segment centres (Figure 6c).

282 There are clear wedge-shaped stratigraphic packages between H1 and H7 in the hanging  
283 wall; these thicken towards F1. In contrast, pre-H1 and post-H7 strata are isopachous (Figure  
284 6a). EI plots show across-fault thickening (i.e. values  $\geq 1$ ) in Unit 1 along the central parts of the  
285 northern and southern segments; the unit is, however, isopachous where the two segments link



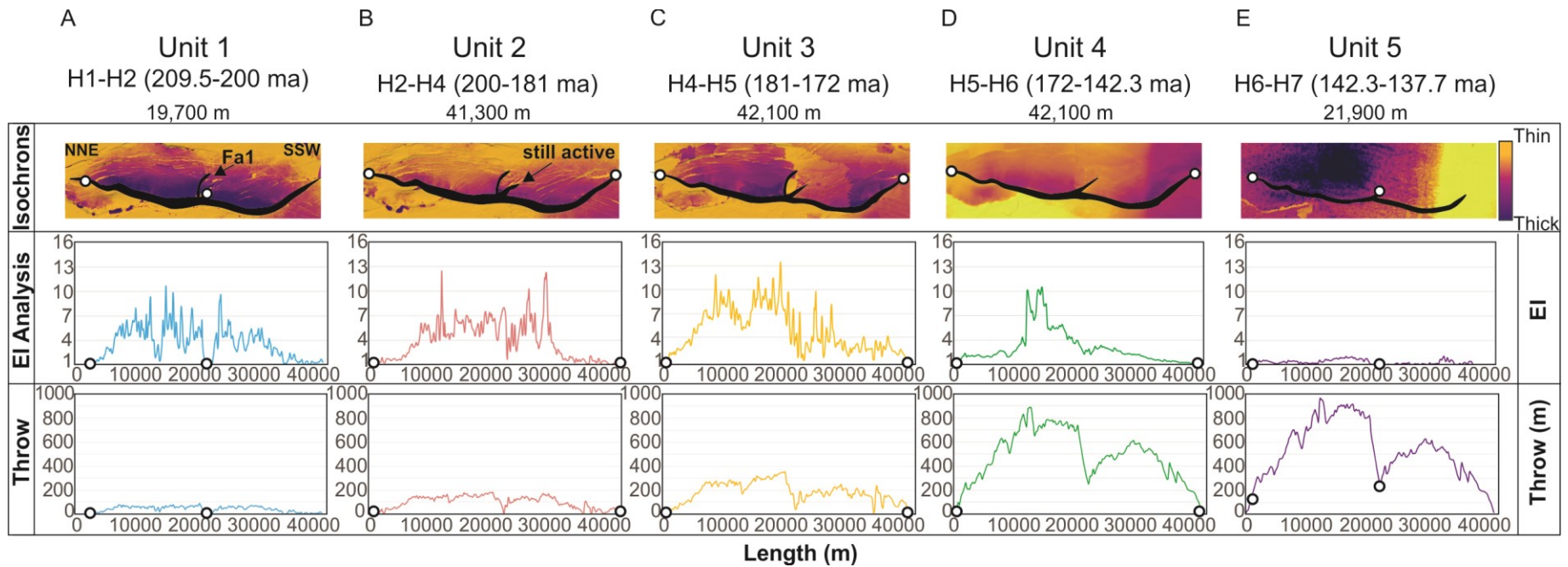
286 (Figure 7a). In contrast, EI values in Unit 2 are  $\geq 1$  across the link between the two segments  
 287 (Figure 7b). EI values are  $\geq 1$  across a progressively longer portion of the fault in Units 2-5  
 288 (Figures 7b-d), until the youngest interval, Unit 6 (Figure 7e), where the upper tip of the fault is  
 289 associated with EI values  $< 1$ .



290

291 **Figure 6. a)** seismic profile illustrating F9 at its point of highest throw and its correlated throws  
 292 and throw gradients, **b)** throw-distance plot illustrating the lateral variations in throw across each  
 293 seismic unit. All throw values should be considered to be possible +20% due to decompaction  
 294 (Taylor et al., 2008).

295



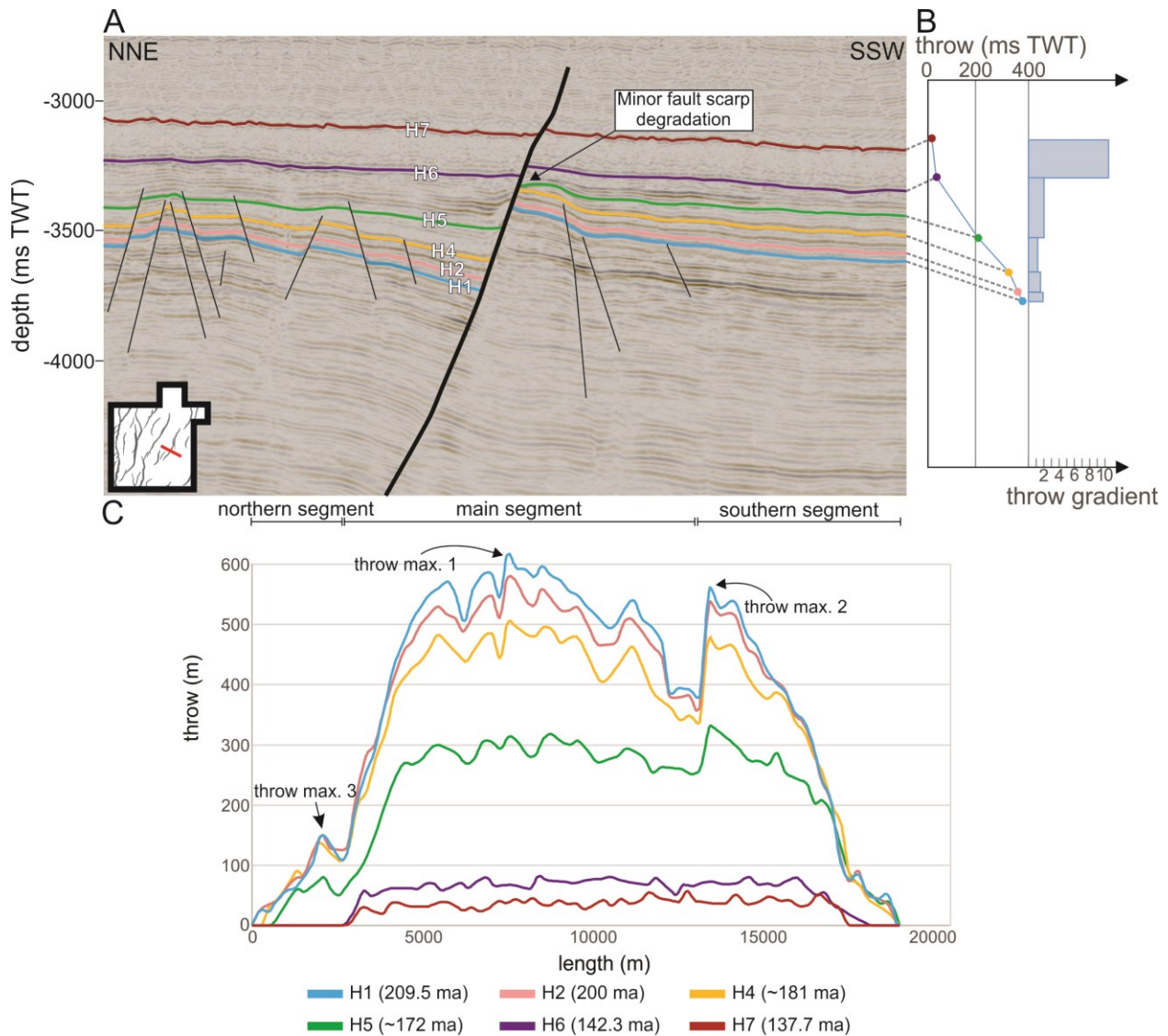
**Figure 7.** Isochrons, expansion index analysis, and throw throughout different stages of the life of Fault 1. The throw through time values are taken from displacement backstripping, which can be seen in detail in the appendix figures. White dots indicate the length of the fault at the specified interval. **a)** Isochron showing the thickness between H1 (209.5 my) and H2 (196 my), maximum throw is 78 m, and length is 19,700m, **b)** Isochron showing the thickness between H2 (196 my) and H4 (170 my), maximum throw is 191 m and length is 41,300 m, **c)** Isochron showing the thickness between H4 (170 my) and H5(162.5 my), maximum throw is 438 m and length is 41,100, **d)** Isochron showing the thickness between H5 (162.5 my) and H6 (142.3 my), maximum throw is 993 m and length is 42,100, **e)** Isochron showing the thickness between H6 (142.3 my) and H7 (137.7 my), maximum throw is 1098 and length is 21,900 m. All throw values should be considered to be possible +20% due to decompaction (Taylor et al., 2008).

#### 4.1.2 Interpretations:

We see across-fault thickening in the hanging wall between H1 and H7 (Units 1-5) in cross section (Figure 6a) and in isochron thickness maps (Figure 7a-e), suggesting F1 was active from 209.5 to 137.7 Ma (Early Jurassic-Early Cretaceous). In detail, however, the EI plots show that different parts of the fault were active at different times. The fact that F1 is associated with two discrete throw maxima (and two associated bell-shaped throw distributions), as well as an EI of  $<1$  in the middle of the fault in the first time interval (Unit 1; Figure 7a), suggests it formed by the linkage of two, initially separate segments. Linkage likely occurred some time between the deposition of H2 and H4, based on EI values of  $>1$  only occurring in units above H1. Often, when faults link, their paleo-tip-lines become inactive (Childs et al., 2003). In this case, however, F1 is a footwall-breached relay and the tip of the northern segment continued to accrue displacement on portions of the fault tips bounding the now-breached relay ramp (Figure 7e). The lack of throw in the middle of the fault is likely due to the still-active northern segment paleo-fault tip accommodating strain in the middle of the fault, as well as a minor E-W fault (labeled F1a in Figure 7a) that cuts perpendicularly across F1. F1 reached its maximum length by the deposition of H5 (Unit 3), or possibly sooner, based on the observation of EI values  $\geq 1$  across its length for this interval (Figure 7c). During Unit 5, the lateral ends of the fault have an EI value of  $<1$ , which suggests that the fault tips became inactive at this time. Additionally, during this last stage of fault growth, the breached relay ramp between the northern and southern segment had an EI value of  $<1$ , which suggests that the fault along the previously active relay ramp between the two fault segments became inactive (Figure 6e).

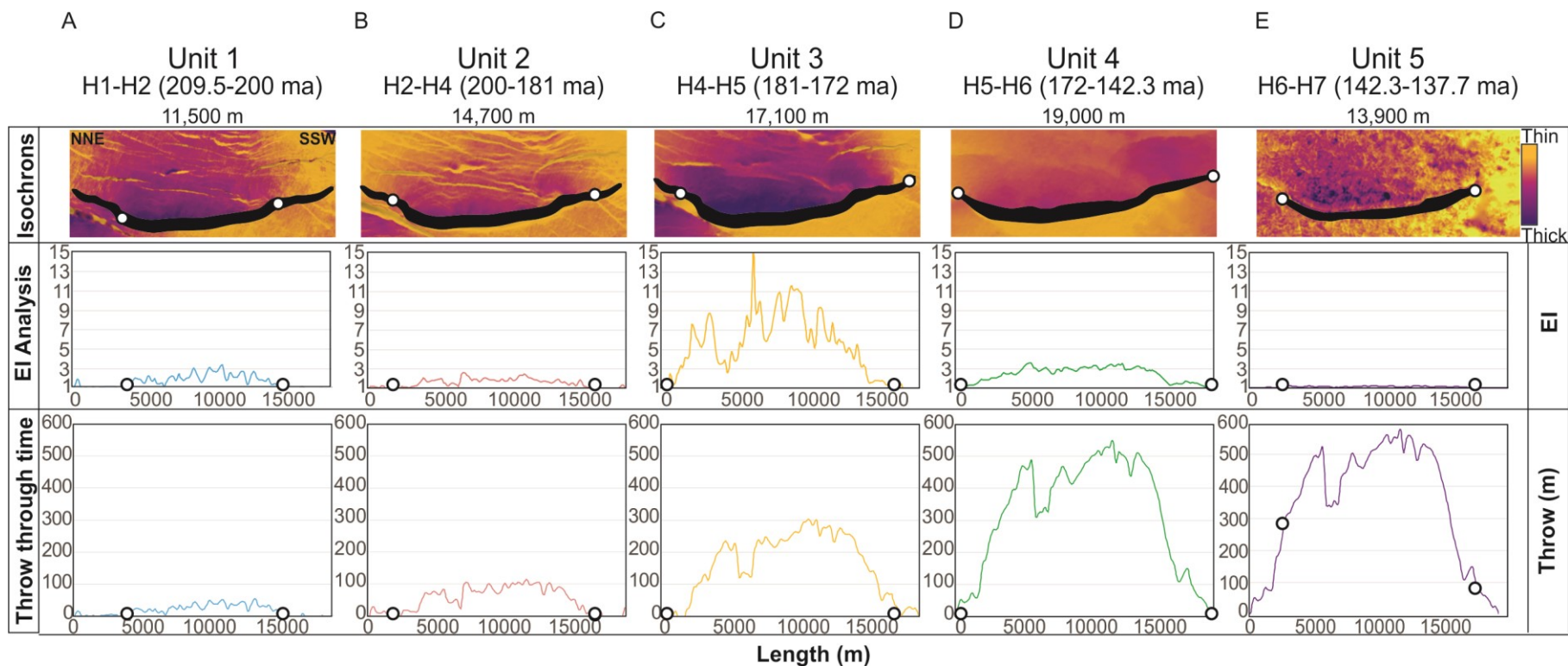
In summary, according to throw backstripping and EI analysis, F1 initiated after the deposition of H1 (c. 209.5 ma), and within c. 9.4 Myr (13% of its total life) consisted of two separate segments that were 19.7 km and 19.2 km long. During this first phase of activity, it accumulated only 7% of its total throw. Approximately 28.2 Myr later, the two segments linked and the outermost tips of the newly formed fault system had propagated slightly, meaning it was now 41.3 km long. The fault had therefore reached c. 98% of its maximum length and accrued 17% of its total throw by this point (i.e. 39% of its life). Its maximum length was reached 9.4 Myr later, by which time it had accumulated 52% of its total throw. During the last 4.6 myr of the faults life, the remaining 56% of throw was accrued, and the northernmost 0.9 km and southernmost 2.9 km became inactive.

## 4.2 Fault 2



**Figure 8.** a) seismic profile illustrating F7 at its point of highest throw and its correlated throws and throw gradients, b) throw-distance plot illustrating the lateral variations in throw across each seismic unit. All throw values should be considered to be possible +20% due to decompaction (Taylor et al., 2008).





**Figure 9.** Isochrons, expansion index analysis, and throw throughout different stages of the life of Fault 7. The throw through time values are taken from displacement backstripping, which can be seen in detail in the appendix figures. White dots indicate the length of the fault at the specified interval. **a)** Isochron showing the thickness between H1 (209.5 my) and H2 (196 my), maximum throw is 55 m, and length is 11,500m, **b)** Isochron showing the thickness between H2 (196 my) and H4 (170 my), maximum throw is 116 m and length is 14,700 m, **c)** Isochron showing the thickness between H4 (170 my) and H5(162.5 my), maximum throw is 303 m and length is 17,100, **d)** Isochron showing the thickness between H5 (162.5 my) and H6 (142.3 my), maximum throw is 550 m and length is 19,000, **e)** Isochron showing the thickness between H6 (142.3 my) and H7 (137.7) my, maximum throw is 617 and length is 13,900 m. All throw values should be considered to be possible +20% due to decompaction (Taylor et al., 2008).

### 4.2.1 Observations

Fault 2 (F2) is a 19 km long, SSW-NNE-striking, WNW-dipping normal fault. F2 comprises a long (11 km) central segment that is linked at each end via abrupt bends, to shorter (3-5 km) segments (Figures 8 and 9). The upper tip-line of F1 is located in Lower Cretaceous strata, and its lower tip-line is difficult to locate due to poor seismic imaging in the pre-rift, but F1 appears to tip out deep in the study area or into the basement (Figure 4). F2 presently has three local throw maxima; a central maxima (380 ms TWT<sup>{+76}</sup>, 620 m<sup>{+124}</sup> at H1) on the main, central segment, a southern maxima (348 ms TWT<sup>{+70}</sup>, 560 m<sup>{+112}</sup> at H1) that is located along the southern fault segment, and a smaller, northern maxima (94 ms TWT<sup>{+19}</sup>, 150 m<sup>{+30}</sup> at H1) on the northern fault segment (Figure 8b). The throw maximas are separated by two throw minimas that coincide with the abrupt bends in the map-view trace of F2, where the northern and southern segments connect with the central segment (Figure 9). The main segment has an overall symmetrical throw distribution, and the northern and southern segments are skewed to the south and north respectively (Figure 8b).

There are clear wedge-shaped stratigraphic packages between H1 and H7 in the hanging wall, which thicken towards F2. Pre-H1 and post-H7 strat are isopachous (Figure 8a) EI plots show values  $\geq 1$  along a progressively longer portion of the fault from the oldest to the second youngest stratigraphic intervals (Units 1-4; Figures 9a-d). In Unit 5, the lateral tips of the fault have an EI value that is  $< 1$  (Figure 9e).

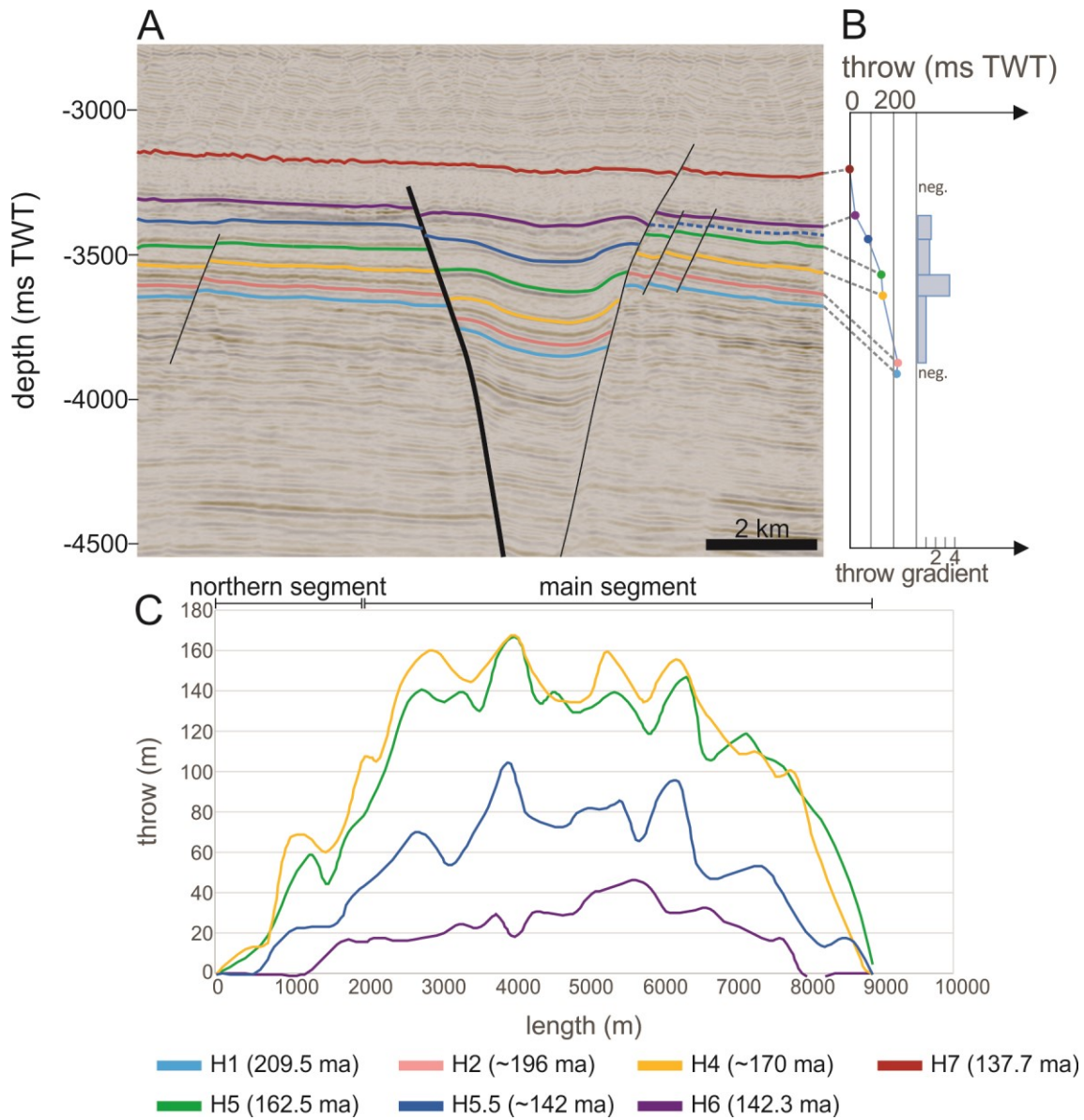
### 4.2.2 Interpretations

We see across-fault thickening between H1 and H7 (Units 1-5) in cross-section (Figure 8a) and in isochron thickness maps (Figures 9a-e), suggesting F2 was active from 209.5 to 137.7 Ma (Early Jurassic-Early Cretaceous). The fact that EI values  $\geq 1$  are limited to the central segment of the fault in Unit 1 (Figure 9a) suggests that F2 initiated here, an interpretation that is supported by the symmetry of the throw distribution on this segment (Figure 8b). The shorter southern segment is clearly present and active by Unit 3 (Figure 9c) and possibly already by Unit 2 (Figure 9b) times, as evidenced by EI values  $\geq 1$  along these segments in the corresponding interval. The throw maxima on the southern segment is skewed towards the NNE (Figure 8b), which is interpreted as a result of the mechanical interaction of the southern section with the already-existing central segment (Wilkinson et al., 2015). The northern segment is present and active by Unit 3 times (c. 28.5 myr), based on the observation of EI values  $\geq 1$  along the segment (Figure 9c). This northern segment may have simply formed due to lateral (i.e. north-northeastward) propagation of the northern tip of the central segment. However, our preferred interpretation is that it initiated as a separate segment, based on: i) the observed EI distribution within Unit 4 (i.e. the EI peak is located centrally along the SSW segment; Figure 9c); ii) the fact the throw maximum is offset to the SW of the centre of the mapped trace of the northern segment (Figure 8b); and, iii) the pronounced bend between the central and northern segments, which we infer reflects a now-breached relay ramp (Peacock & Sanderson 1994; Walsh et al., 1999). F1 reached its maximum length by the deposition of H5, or possibly sooner, as evidenced by EI  $\geq 1$  across its length during this interval. EI values drop below 1 on the lateral tips of F2 in Unit 5, which we interpret as the outer 2-2.5 km of the fault becoming inactive (Figure 9e).

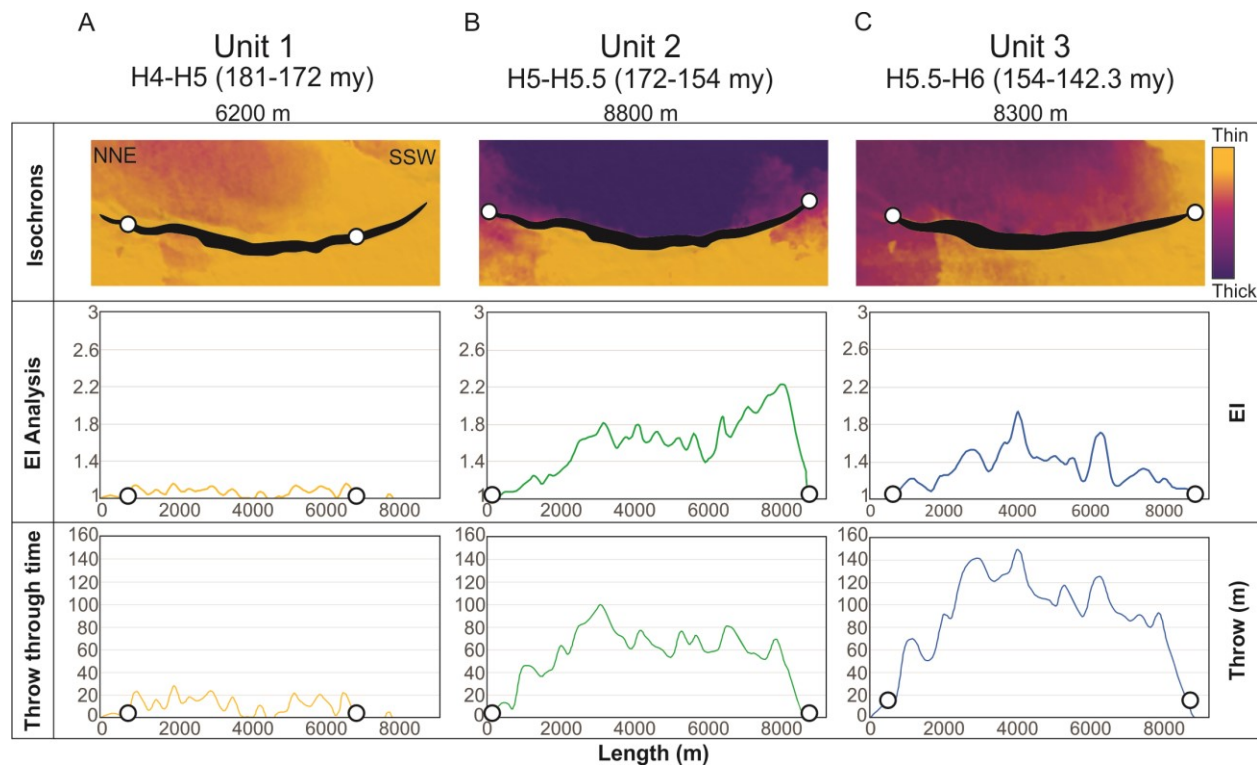


In summary, according to throw backstripping and EI analysis, F2 initiated after the deposition of H1 (c. 209.5 ma), and within c. 9.4 Myr (13% of its total life) was 11.5 km long (60.5% of maximum length). During this first phase of activity, F2 only accumulated c. 13% of its total throw. Approximately 18.8 myr later, F2 had grown via tip propagation and possibly segment linkage to be 14.7 km long. At this time, the fault had reached 77.4% of maximum length and only 20% of total throw by this point (39.3% of the faults life). C. 9.4 myr later (i.e. 50.2% of the total life), the central segment of F2 grew via segment linkage to be 17.1 km long, and accumulated c. 52.4% of total throw. Its maximum length was reached within the next 29.9 myr, by which time it had accumulated c. 95.1% of its total throw. During the last 4.6 myr of the faults life, the remaining 4.9% of throw was accrued, and the northernmost 2.6 km and southernmost 2.4 km of the fault became inactive.

### 4.3 Fault 3



**Figure 10. a)** seismic profile illustrating F3 at its point of highest throw and its correlated throws and throw gradients, **b)** throw-distance plot illustrating the lateral variations in throw across each seismic unit. All throw values should be considered to be possible +20% due to decompaction (Taylor et al., 2008).



**Figure 11.** Isochrons, expansion index analysis, and throw throughout different stages of the life of F3. The throw through time values are taken from displacement backstripping, which can be seen in detail in the supplementary figures. White dots indicate the length of the fault at the specified interval. **a)** Isochron showing the thickness between H4 (170 my) and H5 (162.5 my), maximum throw is 28 m, and length is 6200 m, **b)** Isochron showing the thickness between H5 (162.5 my) and H5.5 (152 my), maximum throw is 100 m and length is 8800 m, **c)** Isochron showing the thickness between H5.5 (152 my) and H5 (142.3 my), maximum throw is 149 m and length is 8300 m. All throw values should be considered to be possible +20% due to decompaction (Taylor et al., 2008).

#### 4.3.1 Observations

Fault 3 (F3) is an 8.8 km long, NNE-SSW-striking, ESE-dipping normal fault. Its plan-view geometry consists of a slightly curved, convex-into-the-footwall segment with a small (1 km) fault branch near its northern tip (Figures 10 and 11). The upper tip-line of F1 is located in Lower Cretaceous strata, and its lower tip-line is difficult to locate due to poor seismic imaging in the pre-rift, but F1 appears to tip out deep in the study area (Figures 10). The present-day throw distribution for F3 shows two throw maxima; the main maxima (165 m<sup>{+33}</sup>, 83 ms TWT<sup>{+17}</sup> at H4) is located in the center of the main segment, with another, more minor maxima

(59 m<sup>{+12}</sup>, 37 ms TWT<sup>{+7}</sup> at H4) being associated with a possible northern segment (Figure 10b).

There are wedge-shaped stratigraphic packages between H4 and H6 in the hanging wall, which thicken towards F3. In contrast, pre-H4 and post-H6 strata are isopachous (Figure 10a). EI values are  $\geq 1$  across a progressively longer portion of the fault from Unit 1-2 (Figures 11a and 11b), and in Unit 3, the outer tips of the fault have EI values  $< 1$  (Figure 11c).

#### 4.3.2 Interpretations

We see across-fault hanging wall thickening between H4 and H6 (Units 1-3) in cross section (Fig 10a) and in isochron thickness maps (Figures 11a-c), suggesting F3 was active from c. 181 Ma to 142.3 Ma (Early Jurassic-Early Cretaceous). F3 likely initiated along its central segment during Unit 1 and reached its maximum length by the time of deposition of Unit 2 (Figure 11b); this is clearly evidenced by EI values  $\geq 1$  along the faults entire trace-length. Together with the overall bell-shaped (present) distribution of throw these EI data (Figure 11) suggest F3 grew as a single fault segment, or possibly as one large fault segment that linked with a very small segment at its northern tip. During Unit 3, EI values were  $< 1$  on the northern-most part of the fault, suggesting that the F3's northern tip became inactive (Figure 11c).

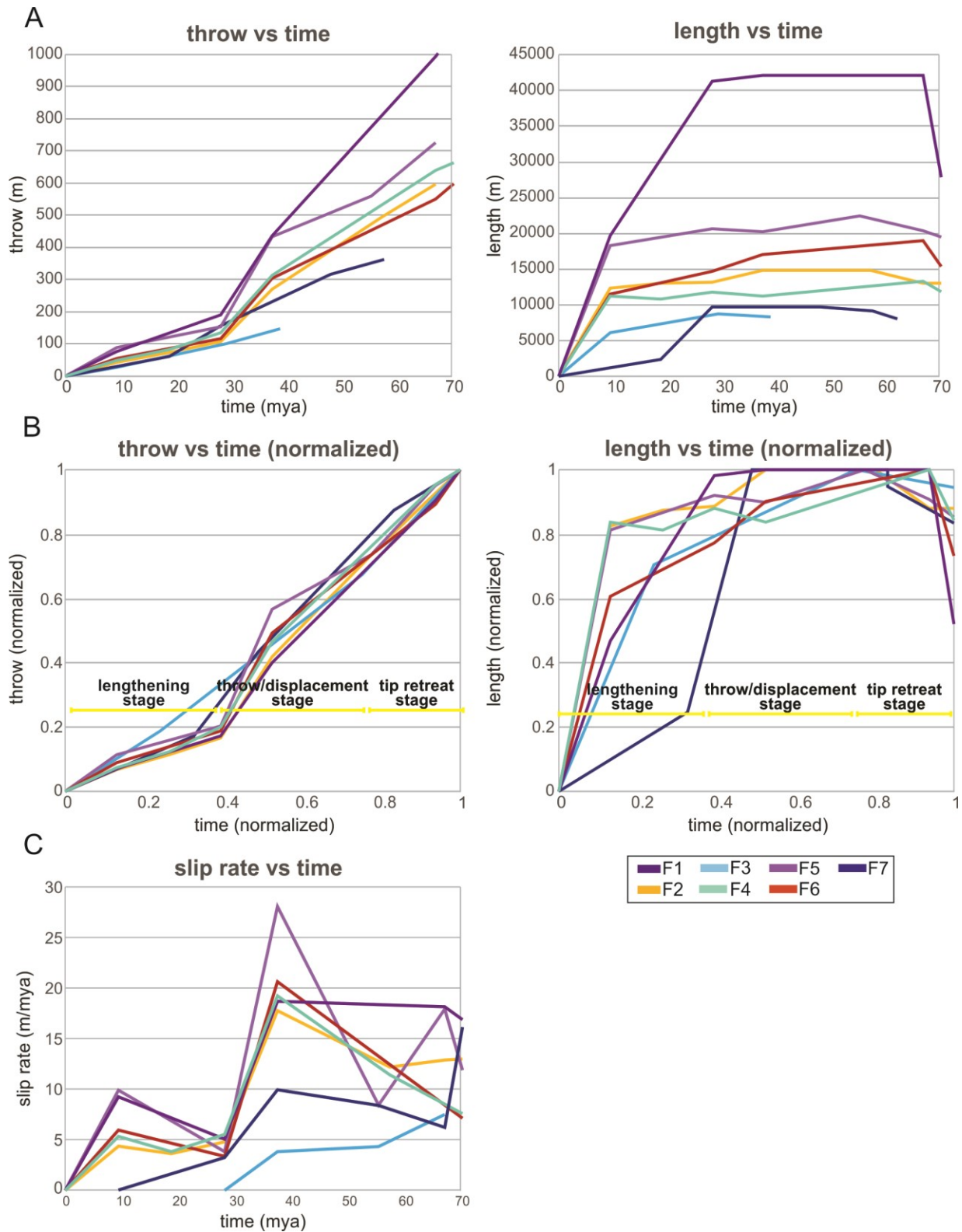
In summary, according to throw backstripping and EI analysis, F3 initiated after the deposition of H4 (c. 181 ma), and within c. 9.4 myr (24% of its total life) was c. 6.2 km long (70.5% of maximum length). During this first phase of activity, it accumulated only 18.9% of its total throw. Approximately 19.9 Myr later, F3 propagated to its maximum length of 8.8 km. The fault had therefore reached its maximum length and accrued and accrued 67% of its total throw

by this point (i.e. 75% of its life). During the last c. 4.6 myr of the faults life, the remaining 33% of throw was accrued, and the length of the fault shortened by 600 m on the NNE tip of the fault.

#### 4.4 Temporal evolution of throw and length

Most of the seven studied faults seem to have grown in three distinct stages: a lengthening stage, a throw accumulation stage, and a tip retreat stage. All of the faults have an early (i.e. first 20-30% of their lives) relatively rapid lengthening phase, during which time they reach 60-95% of their maximum length (see Figure 5a for isochrons across the study area, Figure 12a for values). Fault tips then grow slowly via tip propagation or segment linkage, reaching their maximum lengths after 57-93% of their lives (Figure 5b-c). After they reached their maximum length, all of the faults experienced a stage during which their overall at-surface trace-lengths reduced by up to 2.5 km (up to 25% of their total length) (Figures 12a-b).

Because of these shared kinematics, all of the faults studied, with the exception of F3, displayed similar temporal changes in their throw-length scaling relationship (Figures 12b and 12c). The three-stage kinematics identified above also correlate with changes in throw (Figure 12b) and slip rate (Figure 12c). For example, during the lengthening stage, slip rate is relatively low ( $3.2^{+0.68}$ -6 m/myr  $^{+1.15}$ ). During the subsequent throw accumulation stage, there was an abrupt increase in throw rate (to  $4.9^{+0.62}$ -28 m/myr  $^{+6}$ ). Throw rate decreases slightly ( $7^{+0.62}$ -20 $^{+4.8}$  m/myr) as the faults die. It should be noted that the throw rate during the first half of the faults life (until deposition of H5) is likely underestimated due to the basin being somewhat sediment starved during this period. A higher slip rate would mean the time difference between the lengthening and throw accumulation stages is smaller.



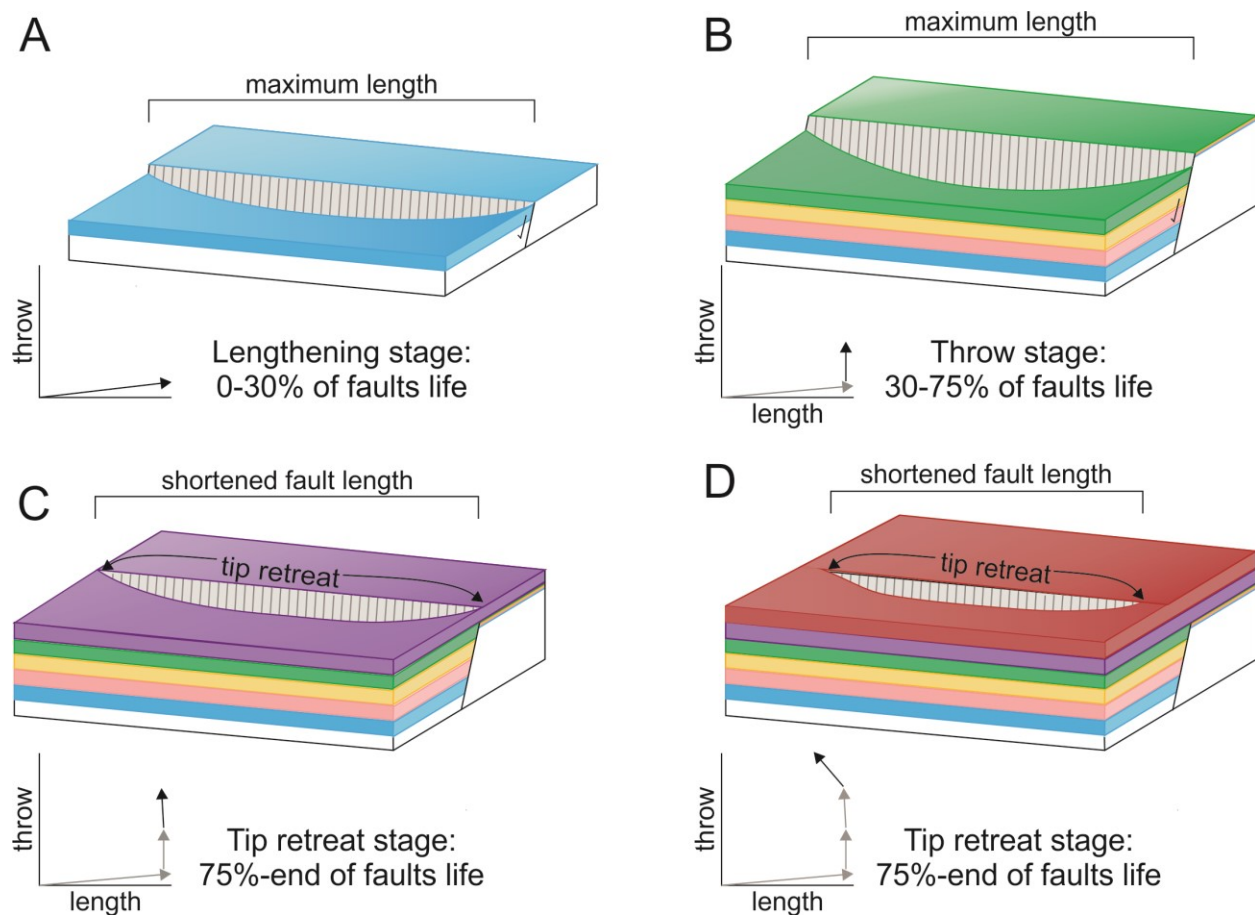
**Figure 12.** throw and lengthening through time for F1-8 in time and normalized. The lengthening, throw/displacement, and tip retreat stages of faulting are labelled in the normalized graphs. All throw values should be considered to be possible +20% due to decompaction (Taylor et al., 2008).

## **5 Discussion**

### **5.1 Implications for fault growth models**

Our study identifies three key stages of fault growth. First, there is an initial lengthening stage (Figure 13a); all of the faults reach 60-95% of their maximum length within the first 20-30% of their lives. Maximum length is later reached via tip propagation or segment linkage. Second, there is then a throw accumulation stage (Figure 13b) that lasts from ~30-75% of the faults life; during this time, faults lengthen very little and experience an increased slip rate. Third, the tip retreat stage, (Figure 13c and 13d) that lasts for the final 25% of the faults life during which the faults experience tip-line retreat, and throw is partitioned towards the center of the fault. Our findings are generally consistent with the model of Rotevatn et al. (2019), but we suggest two important amendments. First, the fault maximum length is not always reached during the initial lengthening stage; i.e our results demonstrate that, while the bulk of lengthening happens relatively quickly, 5-40% can subsequently occur during lateral tip propagation and/or segment linkage. Variations in when the fault reaches its maximum length is likely controlled by whether a fault links with a nearby segment or not, a process perhaps dictated by the ability of the faults to breach the intervening relay. Second, there could be a stage of tip retreat at the end of the faults' life (Figures 13c and 13d); i.e. every fault in this study underwent tip retreat, suggesting that this may be a generic aspect of fault evolution than currently appreciated, and that it should thus be included in fault evolution models.





**Figure 13.** Schematic models showing the phases of fault growth. **a)** Fault lengthening stage, when faults establish their near-maximum length within the first 30% of their life **b)** Fault throw accrual stage, where faults have already reached their maximum length, and throw rate increases **c)** the beginning of the tip retreat stage, where the tips of the fault become inactive and **d)** the continuation of the tip retreat stage, where the active fault trace line is progressively shorter

In previous work on normal fault growth models, slip rate is often not quantified. Some work has shown that there is some variability in slip rate on a scale of thousands of years, but that slip rates even out on a longer temporal scale (greater than 300 kry) or spatial length scale (e.g. entire fault system) (Mouslopoulou et al., 2009; Nicol et al., 2006). However, our work has shown slip rates that vary significantly on a scale of millions of years, ranging between 3.8 m/myr and 28 m/myr. Long-term fluctuations in slip rate like we see could be a result of changes in regional strain rate (Mouslopoulou et al., 2009) or fault interactions (Cowie & Roberts, 2001),



however it is possible that further research needs to be done to see how slip rates could vary in different faults over long periods of time.

Our results also allow us to further refine fault growth models by considering how slip rate varies with time. Previous work shows slip rate is highly variable on timescales of a few thousand years, but that these rates are less variable when viewed on a longer temporal- (i.e. >300 kry) or spatial-scales (i.e. an entire fault system) (Mouslopoulou et al., 2009; Nicol et al., 2006). However, our work has shown that slip rates can vary significantly (3.8-28 m/Myr) on temporal-scales spanning several million years. These long-term fluctuations in slip rate may reflect changes in regional strain rate (Mouslopoulou et al., 2009), or the observed accelerated slip rates could be a result of strain localization onto larger faults (Cowie & Roberts, 2001; Gupta et al., 1998).

Additionally, the ‘final’ length of a fault is often mentioned in normal fault databases (Bailey et al., 2005; Cowie & Schultz 1992; Kim & Sanderson, 2005; Schultz & Fossen, 2002; Walsh et al., 1998). We have demonstrated that because some faults may experience a stage of tip retreat at the end of their active lives, their ‘final length’ may be up to 25% smaller than their ‘maximum length’, which could affect displacement/length plots in global normal fault databases. Thus, it is important to extract the displacement/length at the base of the pre-rift, given this records the maximum extensional strain.

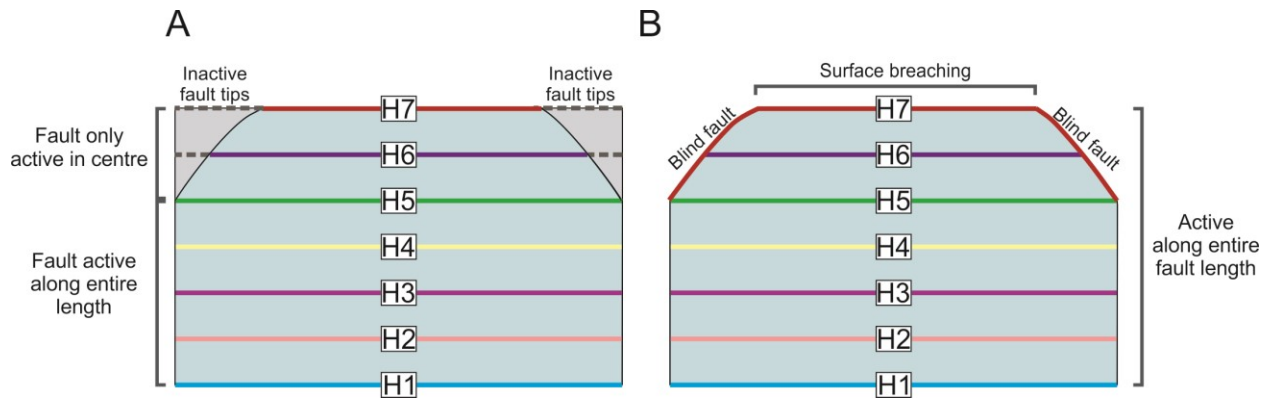
## **5.2 The role of tip retreat**

Fault tip retreat is present on one or both tips of all of the faults in our study. This process has, however, only very rarely been described. Meyer et al., (2002) note a stage of tip retreat on Tertiary normal faults in the Vulcan Sub-basin, NW Shelf, Australia. The reasons why fault tips might retreat may have been overlooked because of a historical focus on how normal faults grow

as opposed to how they die, and/or because high-quality, age-constrained seismic reflection data, with numerous mappable horizons within fault-related growth strata, are not available. Noting that tip retreat could be a fundamental part of how normal faults evolve is important when trying to understand seismic hazard in areas of active continental extension. For example, earthquake-scaling relationships might suggest that as the active trace-length of a fault decreases, the potential magnitude of earthquakes that could be hosted on that fault may also decrease (Coppersmith & Wells 1994). However, the trace-length of large, mature faults entering the late, tip-retreat stage of their evolution, likely represents only a small portion of the fault surface; these faults could thus generate significantly larger earthquakes than predicted by scaling-relationships. Current structural models for seismic hazard analysis in areas of extensional tectonics do not currently, but maybe should, take fault age or maturity into account (e.g. Manighetti et al., 2007; Wallace, 1970).

All of the studied faults decreased in length (by up to 2.5 km, or 25% of their trace-length) during the last 14 million years (25%) of their lives by retreat of one or both of their lateral tips. This could be explained by two hypotheses. The first hypothesis is that the faults are experiencing a late-stage of *true* tip retreat; i.e. strain becomes localized near the fault centre, leading to progressively shorter surface trace. We would expect that fault surface ruptures shorten as the fault gets closer to death (Figure 14a). An alternate hypothesis is that tip-line retreat is only *apparent* and is related to the faults having an elliptical geometry during the later stages of faulting, due to it having a plunging upper tip-line (i.e. during deposition of H5-7; Figure 14b). In this scenario, the fault would have intersected the free-surface along progressively shorter trace-lengths, with the fault tips being blind (Figure 13b). An increase in sediment accumulation rate relative to fault slip rate could drive this progression. The fault

geometries associated with both hypotheses would look similar in seismic data (cf Figures 14a and 14b).



**Figure 14.** Schematics showing a two possibilities for the apparent tip line retreat in this study. Fault planes along dip are shown, and colored lines indicate the active length of the fault at the time of the deposition of the associated horizons (H1-7). **a)** Fault length remains constant from H1-5, and becomes active a progressively shorter distances across H6 and H7, which can be interpreted as lateral tip retreat. **b)** the fault remains active across the entire length of the fault, but in the later stages of faulting (H6-7) the fault only breaches the surface in the centre of the fault, and the fault tips remain active at depth, acting as blind faults.

We argue that we are seeing true fault tip retreat because if retreat was only apparent and related to the faults elliptical shape, we would expect vertical throw gradients across the horizons to be similar to those encountered on blind normal faults (Childs et al., 2003; Meyer et al., 2002; Walsh & Watterson 1988). For a blind fault, only modest strain can be accommodated by the rock volume without upward tip propagation. In the case of the upper tip of a blind fault, a maximum vertical displacement gradient of  $<0.1$  is typical (Baudon & Cartwright, 2009; Childs et al., 2003; Meyer et al., 2002; Walsh & Watterson, 1998). We measured the maximum vertical displacement gradients between H6 and H7 in the centre of the faults and found values between 2-7 (Figures 6b, 8b, and 10b), more than an order-of-magnitude higher than that typically found for blind faults (Walsh & Watterson, 1988) (Figure 13). Such high vertical displacement gradients suggest that the *entire length* of the upper tip-line must have intersected the free-

surface (Baudon & Cartwright, 2009; Childs et al., 2003; Meyer et al., 2002), and that a portion of the fault had become inactive during the later stages of the faults life, before the deposition of H6 and H7.

When verifying that the tip retreat we see is real, it is important to ensure that the faults are not sediment-starved during the latter stages of their development (post-Jurassic). A reported example of possible tip retreat comes from the East African Rift (Morley, 2002); however, in this case it is possible that the faults became inactive earlier than assumed, and what appears to be tip retreat is only (passive) sediment filling of a starved basin. In our study, we argue the faults were not sediment-starved at the end of their lives (Berriasian-Hauterivian), given appreciable amounts of sediment were deposited in the footwall of the faults during deposition of H5 to H7 (Figures 6a, 7a and 9a).

## **6 Conclusions**

The majority of the studied faults have three distinct stages of fault evolution. During the first stage, the “lengthening stage”, the faults accumulate at least between 60-95% of their final length and accrues between 10-20% of throw. This stage lasts for up to 30% of the faults’ life. The second stage, termed the “throw stage”, fault throw rate increases, and the remainder of maximum fault length is reached. We also suggest that there could be a third stage of fault growth added to previous fault models, the tip retreat stage, where the active trace line of the fault decreases by up to 25% and throw continues to be accrued. More evidence is needed to determine how prevalent tip retreat is, but it could be an important part of late stage fault growth and should be included in future fault growth models.

## Acknowledgments

We thank the Imperial College for providing Bailey Lathrop with the Presidential scholarship to fund her PhD research. We thank Geoscience Australia for making all of the data used in this study publically available. The Glencoe 3D seismic dataset and associated wells can be downloaded from <https://www.ga.gov.au/nopims>. We thank Schlumberger for providing access to Petrel software. We also thank the Imperial College Basins Research Group (BRG) for their input and help throughout this research, and many colleagues with whom we have had beneficial conversations with at EGU and TSG conferences.

## References

- Bailey, W. R., Walsh, J. J., & Manzocchi, T. (2005). Fault populations, strain distribution and basement fault reactivation in the East Pennines Coalfield, UK. *Journal of Structural Geology*, 27, 913–928. <https://doi.org/10.1016/j.jsg.2004.10.014>
- Baudon, C., & Cartwright, J. A. (2008). 3D seismic characterisation of an array of blind normal faults in the Levant Basin, Eastern Mediterranean. *Journal of Structural Geology*, 30(6), 746–760. <https://doi.org/10.1016/j.jsg.2007.12.008>
- Bilal, A., Mcclay, K. E. N., & Scarselli, N. (2020). Fault-scarp degradation in the central Exmouth Plateau, North West Shelf, Australia. *Geological Society, London, Special Publications*, 476(1), 231–257.
- Bouroullec, R., Cartwright, J. A., Johnson, H. D., Lansigu, C., Quemener, J., & Savanier, D. (2004). Syndepositional faulting in the Gres d ' Annot Formation, SE France : high-

resolution kinematic analysis and stratigraphic response to growth faulting. *Geological Society Special Publication*, 221, 241–265.

Brown, A. R. (2011). Interpretation of Three-Dimensional Seismic Data. *AAPG Memoir* 42, /SEG Investigation in Geophysics, 9(42).

Cartwright, J. A., & Dewhurst, D. N. (1998). Layer-bound compaction faults in fine-grained sediments. *GSA Bulletin*, 110(10), 1242–1257.

Cartwright, J. A., Trudgill, B. D., & Mansfield, C. S. (1995). Fault growth by segment linkage: an explanation for scatter in maximum displacement and trace length data from the Canyonlands Grabens of SE Utah. *Journal of Structural Geology*, 17(9), 1319–1326.  
[https://doi.org/10.1016/0191-8141\(95\)00033-A](https://doi.org/10.1016/0191-8141(95)00033-A)

Chapman, T. J., & Meneilly, A. W. (1991). The displacement patterns associated with a reverse-reactivated, normal growth fault. *Geological Society Special Publication*, 56, 183–191.

Childs, C., Holdsworth, R. E., Jackson, C. A.-L., Manzocchi, T., Walsh, J. J., & Yielding, G. (2017). Introduction to the geometry and growth of normal faults. *Geological Society, London, Special Publications*, SP439.23. <https://doi.org/10.1144/SP439.24>

Childs, C., Nicol, A., Walsh, J. J., & Watterson, J. (2003). The growth and propagation of synsedimentary faults. *File:///C:/Users/Balat/OneDrive - Imperial College London/Papers/Aapg\_1987\_0071\_0008\_0925.Pdf*, 8141(May).  
[https://doi.org/10.1016/S0191-8141\(02\)00054-8](https://doi.org/10.1016/S0191-8141(02)00054-8)

Cowie, P. A., & Scholz, C. H. (1992). Displacement-length scaling relationship for faults: data synthesis and discussion. *Journal of Structural Geology*, *14*(10), 1149–1156.

[https://doi.org/10.1016/0191-8141\(92\)90066-6](https://doi.org/10.1016/0191-8141(92)90066-6)

Dawers, N. H., Anders, M. H., & Scholz, C. H. (1993). Growth of normal faults: displacement-length scaling. *Geology*. [https://doi.org/10.1130/0091-](https://doi.org/10.1130/0091-7613(1993)021<1107:GONFDL>2.3.CO;2)

[7613\(1993\)021<1107:GONFDL>2.3.CO;2](https://doi.org/10.1130/0091-7613(1993)021<1107:GONFDL>2.3.CO;2)

Ford, M., Hemelsdaël, R., Mancini, M., & Palyvos, N. (2016). Rift migration and lateral propagation: evolution of normal faults and sediment-routing systems of the western Corinth rift (Greece). *Geological Society, London, Special Publications 439*, (April 2012),

SP439.15. <https://doi.org/10.1144/SP439.15>

Fossen, H., & Rotevatn, A. (2016). Fault linkage and relay structures in extensional settings-A review. *Earth-Science Reviews*, *154*, 14–28. <https://doi.org/10.1016/j.earscirev.2015.11.014>

Freitag, U. A., Sanderson, D. J., Lonergan, L., & Bevan, T. G. (2017). Comparison of upwards splaying and upwards merging segmented normal faults. *Journal of Structural Geology*, *Volume 100*(2017), 1–11. <https://doi.org/10.1016/j.jsg.2017.05.005>

Gupta, A., & Scholz, C. H. (1998). Utility of elastic models in predicting fault displacement fields. *Journal of Geophysical Research*, *103*, 823–834.

Henstra, G. A., Rotevatn, A., & Gawthorpe, R. L. (2015). Evolution of a major segmented normal fault during multiphase rifting : The origin of plan-view zigzag geometry. *Journal of Structural Geology*, *74*, 45–63.

- Jackson, C. A.-L., Bell, R. E., Rotevatn, A., & Tvedt, A. B. M. (2017). Techniques to determine the kinematics of synsedimentary normal faults and implications for fault growth models. *Geological Society, London, Special Publications*, SP439.22.  
<https://doi.org/10.1144/SP439.22>
- Jackson, C. A. L., & Rotevatn, A. (2013). 3D seismic analysis of the structure and evolution of a salt-influenced normal fault zone: A test of competing fault growth models. *Journal of Structural Geology*, 54, 215–234. <https://doi.org/10.1016/j.jsg.2013.06.012>
- Kim, Y. S., & Sanderson, D. J. (2005). The relationship between displacement and length of faults: A review. *Earth-Science Reviews*, 68(3–4), 317–334.  
<https://doi.org/10.1016/j.earscirev.2004.06.003>
- Longley, I. M., Buessenschuett, C., Clydsdale, L., Cubitt, C. J., Davis, C. J., Johnson, R. C., ... Thompson, N. B. (2002). The North West Shelf of Australia - A Woodside Perspective. *Proceedings of the Petroleum Exploration Society of Australia Symposium*, 27–88.
- Manighetti, I., Campillo, M., Bouley, S., & Cotton, F. (2007). Earthquake scaling, fault segmentation, and structural maturity. *Earth and Planetary Science Letters*, 253, 429–438.  
<https://doi.org/10.1016/j.epsl.2006.11.004>
- Marshall, N. G., & Lang, S. C. (2013). A New Sequence Stratigraphic Framework for the North West Shelf, Australia. *The Sedimentary Basins of Western Australia 4: Proceedings PESA Symposium*, 1–32.

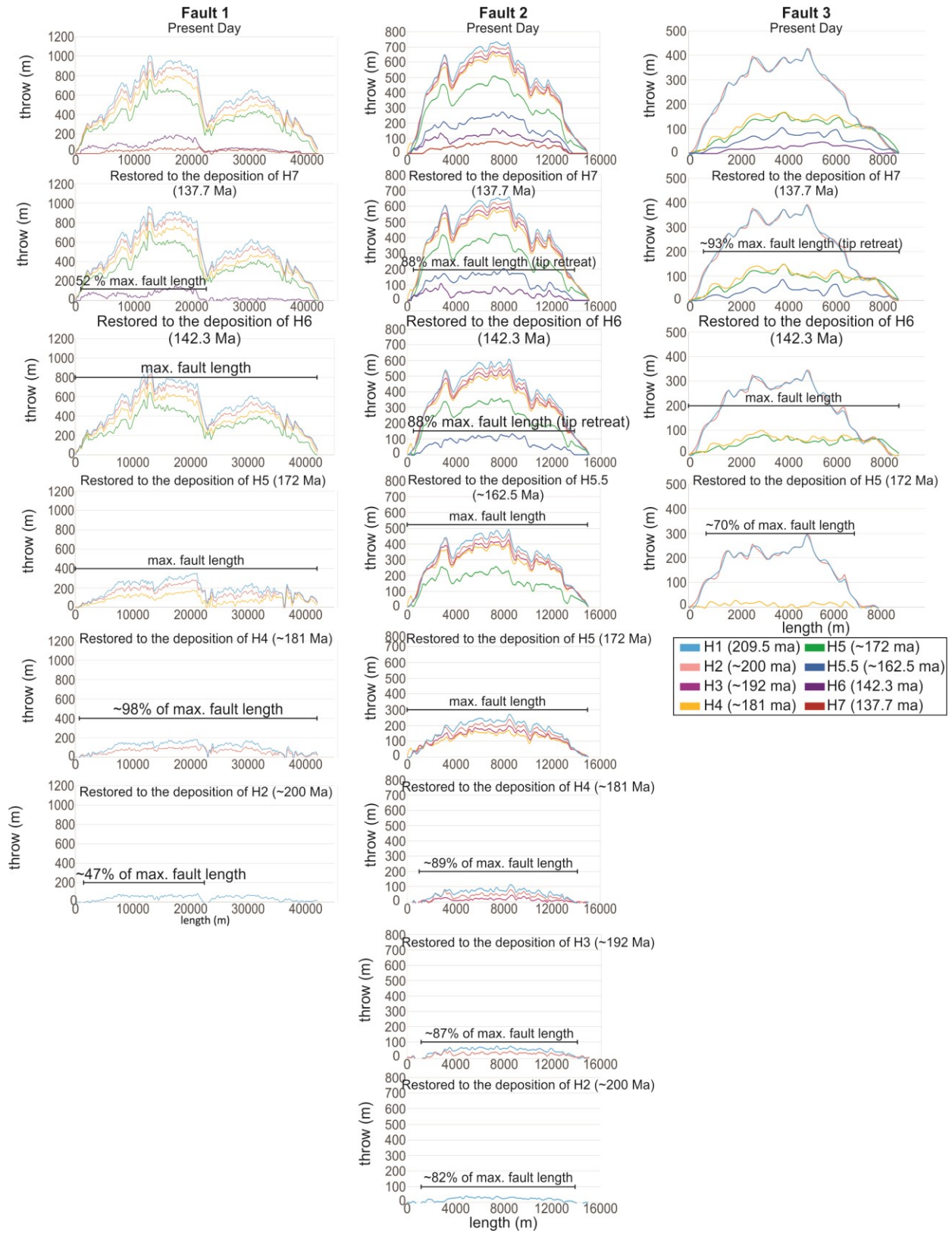


- Meyer, V., Nicol, A., Childs, C., Walsh, J. J., & Watterson, J. (2002). Progressive localisation of strain during the evolution of a normal fault population. *Journal of Structural Geology*, 24(8), 1215–1231. [https://doi.org/10.1016/S0191-8141\(01\)00104-3](https://doi.org/10.1016/S0191-8141(01)00104-3)
- Morley, C. K. (2002). Evolution of large normal faults: Evidence from seismic reflection data. *AAPG Bulletin*, 86(6), 961–978. <https://doi.org/10.1306/61EEDBFC-173E-11D7-8645000102C1865D>
- Mouslopoulou, V., Walsh, J. J., & Nicol, A. (2009). Fault displacement rates on a range of timescales. *Earth and Planetary Science Letters*, 278(3–4), 186–197. <https://doi.org/10.1016/j.epsl.2008.11.031>
- Nicol, A., Childs, C., Walsh, J. J., Manzocchi, T., Scho, M. P. J., Hutt, L., ... Group, F. A. (2016). Interactions and growth of faults in an outcrop-scale system. *The Geological Society of London Special Publication*, 439, 23–39. <https://doi.org/10.1144/SP439.9>
- Nicol, A., Walsh, J. J., Berryman, K., & Villamor, P. (2006). Interdependence of fault displacement rates and paleoearthquakes in an active rift. *Geology*, 34(10), 865–868. <https://doi.org/10.1130/G22335.1>
- Nugraha, H. D., Hodgson, D. M., Reeve, M. T., Jackson, C. A. L., & Johnson, H. D. (2019). Tectonic and oceanographic process interactions archived in Late Cretaceous to Present deep - marine stratigraphy on the Exmouth Plateau , offshore NW Australia. *Basin Research*, 31(2018), 405–430. <https://doi.org/10.1111/bre.12328>

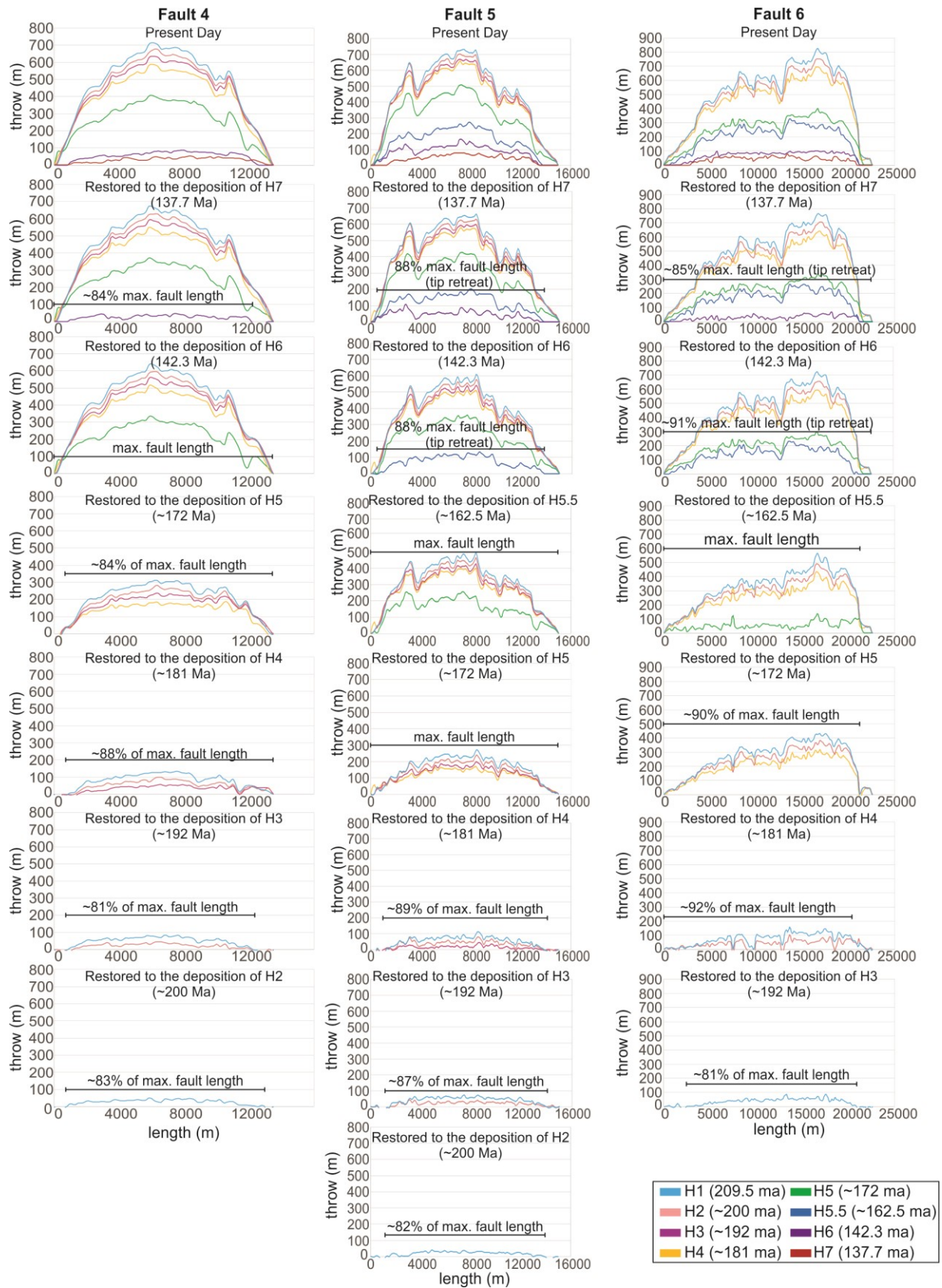
- Rotevatn, A., Jackson, C. A. L., Tvedt, A. B. M., Bell, R. E., & Blækkan, I. (2018). How do normal faults grow? *Journal of Structural Geology*, (August), 0–1.  
<https://doi.org/10.1016/j.jsg.2018.08.005>
- Schultz, R. A., & Fossen, H. (2002). Displacement-length scaling in three dimensions: The importance of aspect ratio and application to deformation bands. *Journal of Structural Geology*, 24(9), 1389–1411. [https://doi.org/10.1016/S0191-8141\(01\)00146-8](https://doi.org/10.1016/S0191-8141(01)00146-8)
- Stagg, H. M. J., Colwel, J. B., Direen, N. G., Brien, P. E. O., Bernardel, G., Borissova, I., ... Ishirara, T. (2005). Geology of the continental margin of Enderby and Mac . Robertson Lands , East Antarctica : Insights from a regional data set. *Marine Geophysical Researches*, 25, 183–219. <https://doi.org/10.1007/s11001-005-1316-1>
- Stagg, H. M. J., & Colwelp, J. B. (1994). The Structural Foundations of the Northern Carnarvon Basin . *The Sedimentary Basins of Western Australia: Proceedings of Petroleum Exploration Society of Australia Symposium, Perth*, 349–372.
- Thorsen, C. E. (1963). Age of growth faulting in Southeast Louisiana. *Gulf Coast Association of Geological Societies Transactions*, 3, 103–110.
- Tindale, K., Newell, N., Keall, J., & Smith, N. (1998). Structural Evolution and Charge History of the Exmouth Sub-basin, Northern Carnarvon Basin, Western Australia. *The Sedimentary Basins of Western Australia 2: Proceedings of Petroleum Exploration Society of Australia Symposium*.

- Tvedt, A. B. M., Rotevatn, A., & Jackson, C. A. L. (2016). Supra-salt normal fault growth during the rise and fall of a diapir: Perspectives from 3D seismic reflection data, Norwegian North Sea. *Journal of Structural Geology*, *91*, 1–26. <https://doi.org/10.1016/j.jsg.2016.08.001>
- Wallace, R. E. (1970). Earthquake Recurrence Intervals on the San Andreas Fault. *Geological Society of America Bulletin*, *81*, 2875–2890.
- Walsh, J. J., & Watterson, J. (1988). Analysis of the relationship between displacements and dimensions of faults. *Journal of Structural Geology*, *10*(3), 239–247.  
[https://doi.org/10.1016/0191-8141\(88\)90057-0](https://doi.org/10.1016/0191-8141(88)90057-0)
- Wells, D. L., & Coppersmith, K. J. (1994). New Empirical Relationships among Magnitude, Rupture Length, Rupture Width, Rupture Area, and Surface Displacement. *Bulletin of the Seismological Society of America*, *84*(4), 974–1002.
- Wilson, P., Elliott, G. M., Gawthorpe, R. L., Jackson, C. A., Michelsen, L., & Sharp, I. R. (2013). Geometry and segmentation of an evaporite-detached normal fault array : 3D seismic analysis of the southern Bremstein Fault Complex , offshore mid-Norway. *Journal of Structural Geology*, *51*, 74–91. <https://doi.org/10.1016/j.jsg.2013.03.005>

## Appendix

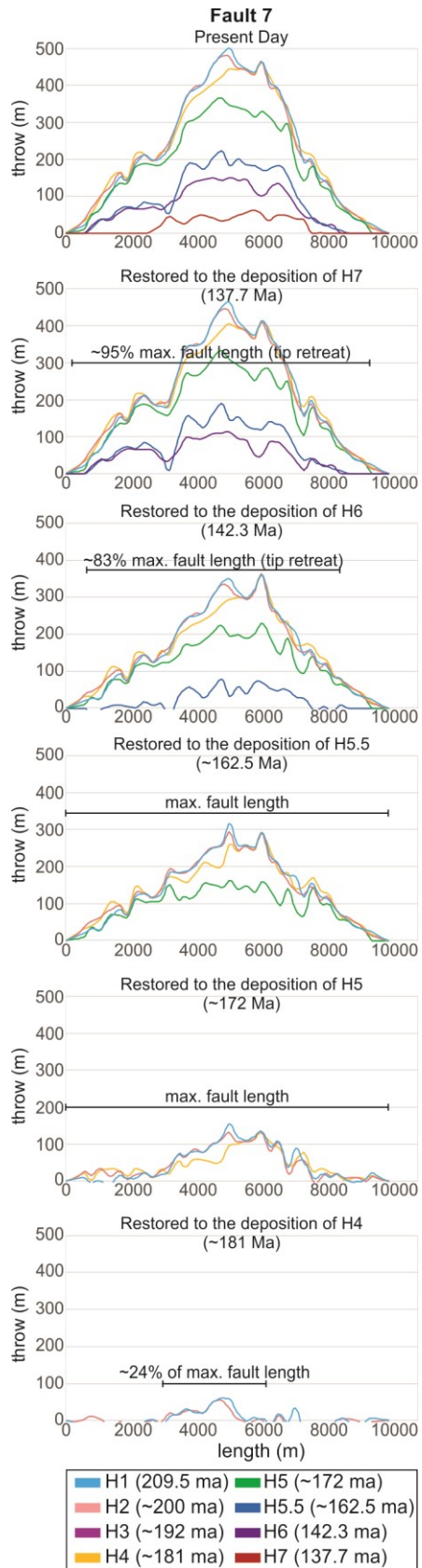


Appendix figure 1. throw backstripping faults 1-3

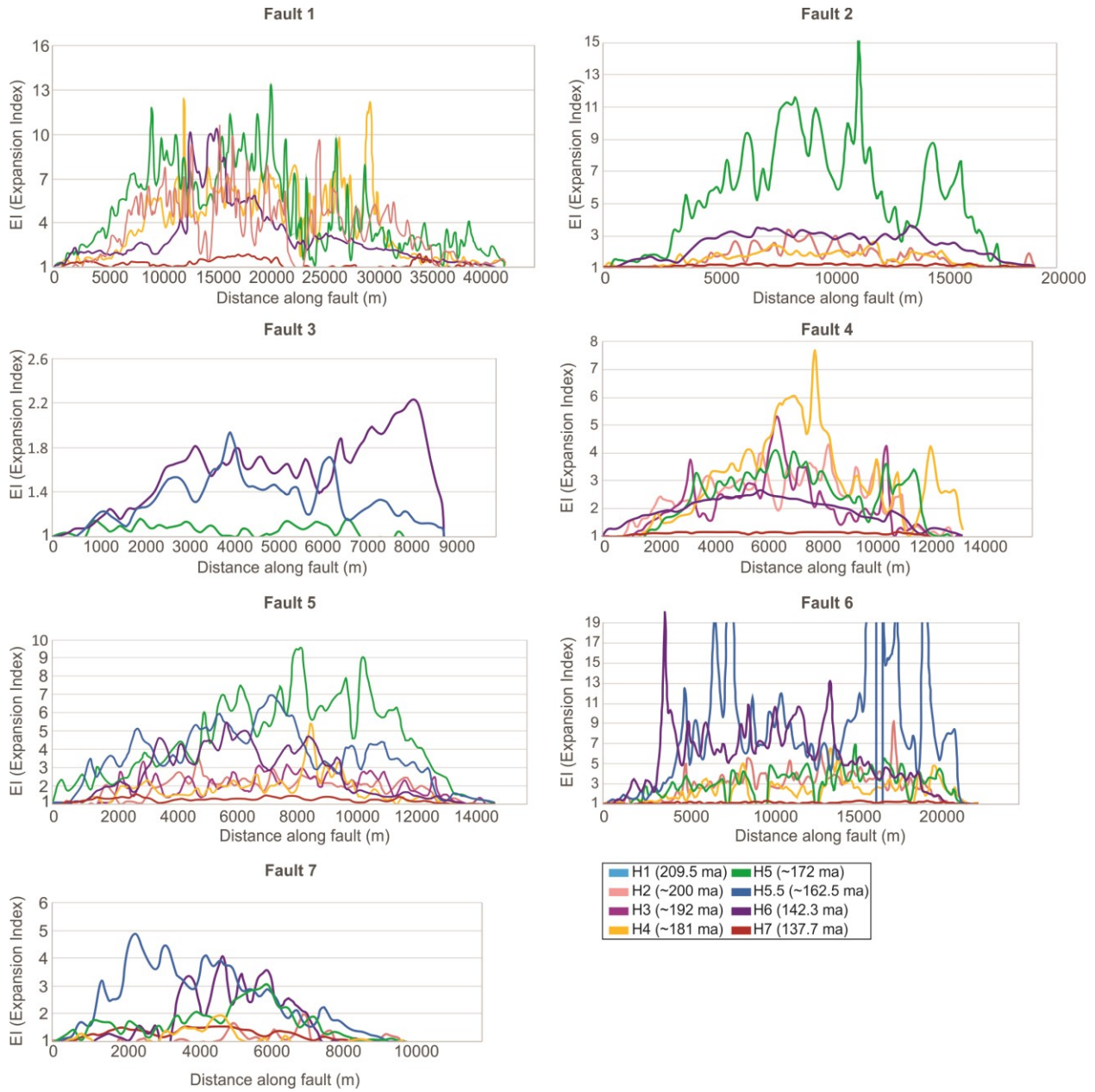


Appendix figure 2. Throw backstripping faults 4-6



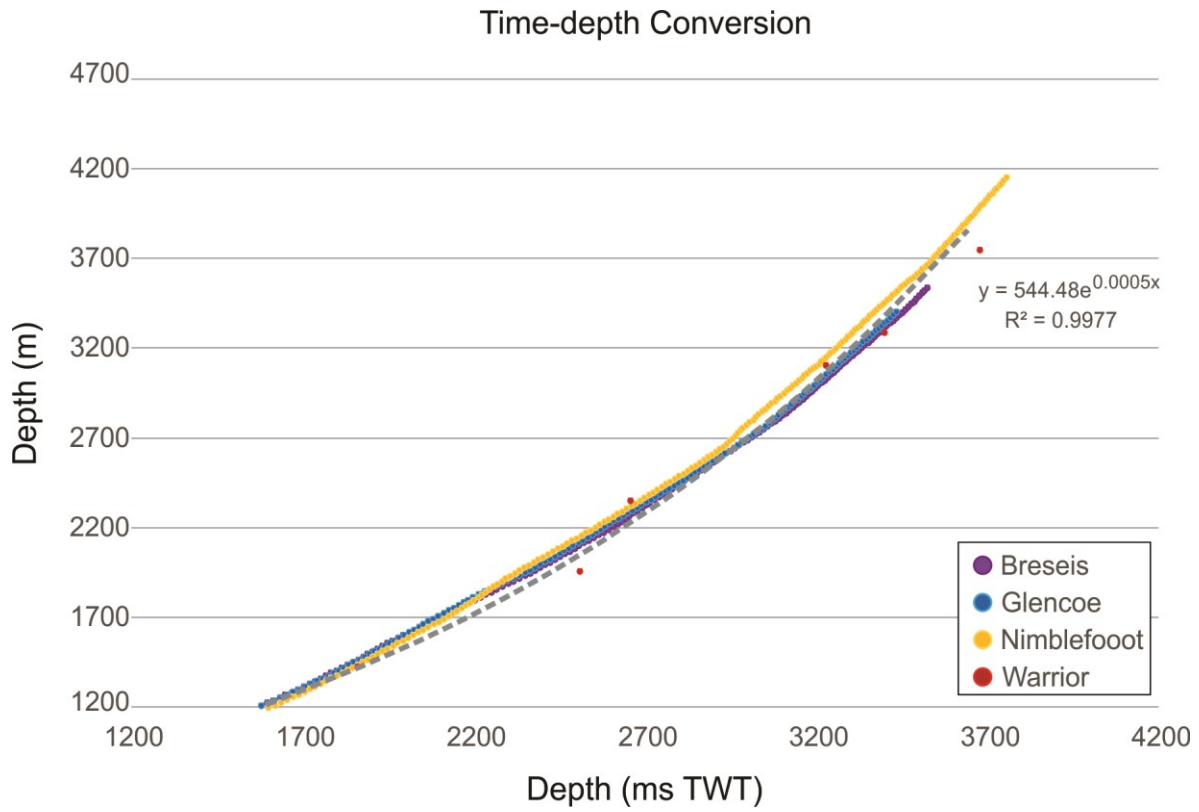


**Appendix figure 3.** Throw backstripping fault 7



**Appendix figure 4.** EI Analysis for faults 1-7





**Appendix figure 5.** Time-depth conversion for the 4 four wells in the study area: Breseis-1, Glencoe-1, Nimblefoot-1, and Warrior-1.