

---

This manuscript has been submitted for publication in **WIREs Water**. Please note that it has not been peer-reviewed and has not yet been accepted for publication. Subsequent versions of this manuscript may have different content. If accepted, the final version of this manuscript will be available via the 'Peer-reviewed Publication DOI' link on the right-hand side of this webpage. Please feel free to contact any of the authors; we welcome feedback

---

# Why do we have so many different hydrological models? A review based on the case of Switzerland

Pascal Horton\*<sup>1</sup>, Bettina Schaefli<sup>1</sup>, and Martina Kauzlaric<sup>1</sup>

<sup>1</sup>Institute of Geography & Oeschger Centre for Climate Change Research, University of Bern, Bern, Switzerland (pascal.horton@giub.unibe.ch)

## Abstract

Hydrology plays a central role in applied and fundamental environmental sciences, but it is well known to suffer from an overwhelming diversity of models, particularly to simulate streamflow. We discuss here in detail how such diversity did arise based on the example of Switzerland. The case study's relevance stems from the fact that Switzerland, despite of being a small country, shows a variety of hydro-climatological regimes, of water resources management challenges, and of hydrological research institutes that led to a model diversification that stands exemplary for the diversification that arose also at larger scales. Our analysis, based on literature review, personal enquiry and an author survey, summarises the main driving forces behind model diversification. We anticipate that this review not only helps researchers from other fields but in particular also the international hydrology community to understand why we have so many different streamflow models.

## 1 Introduction

Since the advent of hydrological modelling, the number of models keeps increasing at a fast pace. It has become common to talk about the “plethora of hydrological models” (Clark et al., 2011). Some authors support the idea that there are too many hydrological models, which might lead to a waste of time and effort, and that the hydrological community should gather on a Community Hydrological Model (Weiler and Beven, 2015).

While any newcomer to hydrological modelling will easily find some guidance on navigating the sheer diversity of hydrological models, on understanding their concepts and limitations (Beven and Young, 2013; Solomatine and Wagener, 2011; Kauffeldt et al., 2016) and on their historical emergence (Beven, 2020b,a), the question of how this diversity has emerged receives much less attention. Existing historical analyses of model diversity (Peel and McMahon, 2020) generally focus on the technical evolution of model types. However, according to our personal experience, much of the knowledge about why many similar models have emerged is transferred informally.

One of the key drivers for the pronounced model diversity in hydrology is undoubtedly the wide range of model applications (Weiler and Beven, 2015) that all require *appropriate modelling*; this concept can be defined following Rosbjerg and Madsen (2005) as “the development or selection of a model with a degree of sophistication that reflects the actual needs for modelling results”. Indeed, there is not a single valid model fitting every purpose (Hamalainen, 2015). Two well-accepted characteristics that models should exhibit are parsimony and adequacy to the problem at hand, i.e. a model should not be more complex than necessary and should be fit-for-purpose (Beven and Young, 2013). In other words, the hydrological model diversification is strongly driven by the modelling context and by what is now often called *uniqueness of place* (Beven, 2000). However, the hydrologic literature also offers other explanations, ranging from legacy reasons for model selection (Addor and Melsen, 2019) to a lack of agreement on concepts for process representations and to the simple wish to try to do better with yet another model parameterisation (Weiler and Beven, 2015).

We attempt here an analysis of what might explain the emergence of multiple hydrological models at the scale of Switzerland, a country that is small enough to do an exhaustive analysis of published work. Despite Switzerland's small area (41285 km<sup>2</sup>), we make the assumption that the range of hydro-climatological regimes (Aschwanden and Weingartner, 1985) and of water resources management challenges (Schneider and

Homewood, 2013; FOEN, 2021) are diverse enough to shed light on some of the dominant drivers of model diversity that are also at work at larger scales. Most importantly, Switzerland has a federal system, with universities and research institutes depending on different national and cantonal funding sources. Accordingly, the country shows a relatively high density of independent and competing hydrological research groups, which can be assumed to replicate at a small scale the model development dynamics that exist at larger scale.

Digital hydrological modelling in Switzerland began in the 1970s, shortly after the first hydrological computer models emerged internationally (Peel and McMahon, 2020). During these early times, there was a strong focus on the simulation of snowmelt runoff (Martinec, 1970; Braun and Lang, 1986) and glacier-melt runoff (Braun and Aellen, 1990). Snowmelt modelling probably started with the work of Hoeck (1952), and modelling of snow runoff kept a strong influence on hydrological model development in the following decades (see Supporting Information for additional details), along with a focus on understanding the role of forests in the water cycle (Keller and Forster, 1991; Forster, 1989). In addition to modelling studies in experimental catchments (Iorgulescu and Jordan, 1994), first model-based climate change (Bultot et al., 1992) and land-use change (Jordan et al., 1990) impact studies appeared. Quantitative real-time forecasts for water resources management (Lugiez et al., 1969) and hydropower production (Jensen and Lang, 1973) started being based on hydrologic models rather than statistical approaches. The work of Hottel et al. (1993) is an early example of model adaptation to a specific catchment; they added three parameters to HBV-ETH to account for aspect-dependent snowmelt and karst runoff for the Thur catchment.

Most notably, model diversity already began to puzzle the Swiss research community in the late 1970ties; Naef (1977) presented a first model intercomparison study, comparing complex and simple models, and Naef (1981) notably asked: “But, given that the results are good, why do new models continue to be published?”

This work aims to disentangle the motivations and reasons behind the choices that led to the current co-existence of a wide range of models. Our analysis relies on a literature review of hydrological modelling of Swiss catchments as well as on a survey conducted with 50 scientific actors (authors of published journal articles) in this domain to assess the more informal and subjective drivers of model selection. We focus here on hydrological models (see Box 1) that simulate hydrological processes, including surface and subsurface flow and the resulting streamflow at the catchment scale. We exclude models that simulate the water balance without providing streamflow at the catchment outlet. The hydrological models developed in Switzerland (Table 1 and Appendix 1) range from rainfall-runoff (Box 1) models (PREVAH, GSM-SOCONT, RS, SEHR-ECHO, WaSiM) to models with emphasis on snow processes (Alpine3D), glacier-hydrology models (GERM) and water temperature models (StreamFlow). Some models have their origin outside Switzerland but are now actively being developed in Switzerland (HBV-light, TOPKAPI-ETH, SUPERFLEX) or were applied to Swiss case studies (CemaNeige-GR6J, LARSIM, VIC, SWAT, mHM).

### **Box 1: What do we mean by hydrological model ?**

A hydrological model is an input-output model that simulates the evolution of water storage, water fluxes and potentially associated chemical and physical properties at the Earth's surface and subsurface, based on the water balance equation. The term “rainfall-runoff model” is often used for hydrologic models that simulate streamflow at a catchment outlet based on input time series of rainfall. The term “rainfall-runoff” stems from the early times when such models simulated how much water of a rainfall event ran off to the stream (rather than being stored in the catchment), i.e. “runoff” designated the part of rainfall that appears as streamflow (WMO, 1992b). Nowadays, rainfall-runoff models are continuous simulation tools that simulate all components of streamflow (including baseflow), and the term “runoff” now designates the lateral (as opposed to vertical) movement of water (at the surface or in the subsurface) towards a river (WMO, 2012). Modern rainfall-runoff models further transform simulated hillslope-scale runoff to catchment-scale streamflow; some of them include in-stream routing. Such models can be generalised to precipitation-runoff models in the presence of snowfall. The term “water balance model” is sometimes used as a synonym for rainfall-runoff models (Boughton, 2004). The correcter term “rainfall-streamflow” model appeared rather early (Young and Minchin, 1991) but is to date (November 22, 2021) only used in 17 WebOfScience publications. Streamflow is in many papers called interchangeably “discharge” and sometimes even “runoff”, which is a legacy effect.

Table 1. List of models (alphabetical order) applied in Switzerland; the fourth column indicates whether the model was originally developed (D) or further evolved (E) by teams active at Swiss universities or research institutes, or whether it is only applied to Swiss case studies, either by teams active in Switzerland (A-CH) or by teams active abroad (A). References are in the main text and Appendix 1.

Model name	Full name	Spatial structure	Type of use
Alpine3D	Alpine3D	distributed	D
CemaNeige-GR6J	CemaNeige - Genie Rural à 6 paramètres Journalier	lumped	A-CH
DECIPHeR	Dynamic fluxEs and Connectivity for Predictions of HydRology	HRU-based	E
GERM	Glacier Evolution Runoff Mode	distributed	D
GSM-SOCONT	Glacier and SnowMelt SOil CONTRibution model	semi-distributed	D
HBV	Hydrologiska Byråns Vattenbalansavdelning	semi-distributed	A
HBV-light	Hydrologiska Byråns Vattenbalansavdelning - light	semi-distributed	E
HYPE	HYdrological Predictions for the Environment	semi-distributed	A
LISFLOOD	LISFLOOD	distributed	A
LARSIM	Large Area Runoff Simulation Model	semi-distributed	A
mHM	meso-scale hydrological model	distributed	A
PREVAH	Precipitation-Runoff-Evapotranspiration HRU Model	HRU-based & distributed	D
RS	Routing System	semi-distributed	D
SEHR-ECHO	Spatially Explicit Hydro. Response model for ecohydro. applic.	semi-distributed	D
StreamFlow	StreamFlow	distributed	D
SUPERFLEX	SUPERFLEX	(not fixed)	E
SWAT	Soil Water and Assessment Tool	semi-distributed	A-CH,A
TOPKAPI-ETH	TOPographic Kinematic APproximation and Integration - ETH	distributed	E
VIC	Variable Infiltration Capacity model	distributed	A
WaSIM(-ETH)	Water Flow and Balance Simulation Model (- ETH)	distributed	D
wflow	wflow	distributed	A

## 2 Drivers for model diversity

The hydrology of Switzerland is shaped by the interplay of its two mountain ranges (Alps and Jura) with the Central Plateau and some of the largest lakes in Europe (Michel et al., 2020). Accordingly, the characteristics of this landscape and its dominant hydrological processes have a prominent place in model development and selection. This modelling context, characteristic of any alpine country, is generally acknowledged in modelling papers through the choice of a model that is "specifically designed to capture hydrological processes that are important for catchments in complex terrain" (Anghileri et al., 2019, referring to the PREVAH model). Multiple similar statements can be found in the literature, for the aforementioned PREVAH model (Verbunt et al., 2007; Zappa and Kan, 2007; Köplin et al., 2010; Brunner et al., 2019b) as well as e.g. for WaSIM (Jasper et al., 2002; Jasper and Kaufmann, 2003; Thornton et al., 2021) or for HBV-light (Sikorska-Senoner et al., 2020).

The high, topography-induced spatial variability in alpine environments is a driver for increased spatial resolution in hydrological models, compared to regions with more gentle topography (Gurtz et al., 2003). Indeed, most models used and developed in Switzerland are semi-distributed or fully distributed. Very few applications rely on lumped models (for example, Keller et al., 2019; Müller-Thomy and Sikorska-Senoner, 2019).

While natural processes and characteristics of the landscape have an impact on model selection and development, the context of the model application also comes into play, e.g. in terms of constraints on the computational efficiency for long-term climate change impact studies or for operational forecasting. We attempt here a clustering of modelling studies according to either the representation of key processes in the model (Sect. 2.1) or the influence of the application context (Sect. 2.2) in various Swiss catchments (Fig. 1).

The information sources considered in this analysis are as far as possible peer-reviewed articles with applications to hydrology. The articles were retrieved based on searches by authors (hydrologists in Switzerland) and keywords. While we tried to search all applications as exhaustively as possible, biases in the search and citing network effects are possible. Where necessary, conference proceedings, PhD theses, research and government reports are also included and complemented with information obtained upon personal enquiry. A few Swiss models are exclusively used or developed in engineering companies, and these are not included here. Furthermore, our analysis focuses on catchment-scale modelling and excludes studies that focus on hydrogeological modelling (Carlier et al., 2019) and those with a focus on urban hydrology (Peleg et al., 2017) or urban hydrogeology (Schirmer et al., 2013). All articles are not directly referenced in this paper, but

a complete table is available in the Supplementary material.

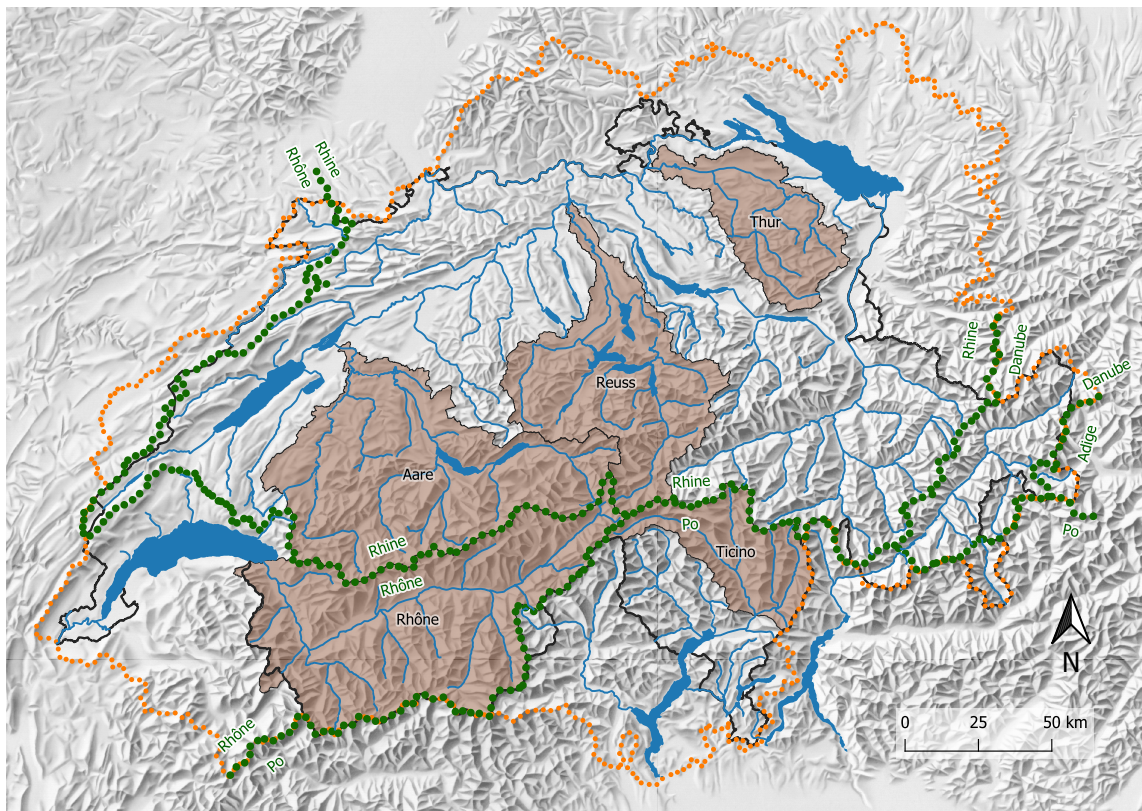


Figure 1 Map of Switzerland with its major drainage divides (green), the extent of the “hydrological Switzerland” (orange) and some catchments (brown) that are referenced in the text (Federal Office of Topography swisstopo; Bühlmann and Schwanbeck, 2018).

## 2.1 Processes

### 2.1.1 Cryosphere

Contributions from snow and glaciers are key components of the alpine environment as they play a significant role in hydrological regimes through a temporal redistribution of water (Barnett et al., 2005). These processes thus need to be accurately represented in the models, which can be achieved with different levels of complexity. Most hydrological models used in Switzerland rely on a simple temperature-index based snow routine (see for example Jenicek et al., 2018). On the other end, Alpine3D, which is built on the snowpack and ground surface model SNOWPACK (Bartelt and Lehning 2002; Lehning et al. 2002b,a), has undoubtedly the most complex representation of snow processes among Swiss models. It allows analyses that require a fully distributed simulation of mass and energy balance, such as the analysis of the influence of snow distribution and water transport within the snowpack on the catchment-scale hydrologic response (Brauchli et al., 2017), or the influence of snow processes on soil moisture and streamflow (Wever et al., 2017).

Despite of the relatively long history of development and application of snow hydrological models, detailed comparisons between simple snow routines and Alpine3D have not been conclusive so far in Switzerland, particularly in the context of climate change applications (Kobierska et al., 2011; Shakoor et al., 2018). It is noteworthy, however, that applications to extended periods remain challenging due to the high computational demand of Alpine3D, with only few attempts to complete long model runs (Michel et al., 2021). The only other hydrological model used in Switzerland that solves the energy balance to simulate snow accumulation and melt is one of the most recent versions of WaSiM; it solves the full energy balance and includes lateral redistribution of snow, but has seen a single application in Switzerland so far (Thornton et al., 2021).

This quasi-dominance of a single snow model that resolves the energy balance at the Swiss level is comparable to the situation in other Alpine countries, e.g. in Italy (Geotop; Endrizzi et al., 2014), in France (Crocus;

Vionnet et al., 2012), or Austria (Admunsen; Strasser et al., 2004). This can certainly be explained by the substantial meteorological data requirements and the considerable effort required to develop and implement such models. This is nevertheless surprising given the importance of snow hydrological processes and related water resources for alpine countries (Beniston et al., 2018).

One possible explanation is the strong focus on the impact of glacier retreat on alpine hydrology, which is at the heart of many climate impact studies in Switzerland (Horton et al., 2006; Schaefli et al., 2007a; Junghans et al., 2011; Addor et al., 2014; Finger et al., 2015; Etter et al., 2017), and in alpine regions in general (Huss et al., 2017). In fact, most models developed in Switzerland have a glacier module to quantify the contribution of glaciers to the hydrological response of a catchment (see for example Finger et al., 2011; Verbunt et al., 2003; Zappa and Kan, 2007; Uhlmann et al., 2013a).

However, in the past, all hydrological models used in Switzerland relied on simplified glacier retreat routines, even in the context of climate change impact simulations (e.g. Horton et al., 2006). This gave rise to the development of the glacio-hydrological GERM model (Huss et al., 2008; Junghans et al., 2011; Farinotti et al., 2012; Finger et al., 2013); this model combines a simple snow-hydrological routine to a new glacier retreat parameterisation scheme, which is now widely applied internationally by the glacio-hydrological modelling community (Huss et al., 2010, called  $\Delta h$ -parameterisation). The awareness of the limitations stemming from poor representations of glacier dynamics in hydrological models is currently rising and further drives hydrological model development. An example is the implementation of the aforementioned  $\Delta h$ -parameterisation in HBV-light (Seibert et al., 2018a).

### 2.1.2 Sediment production and transport

A particular topic that deserves a more detailed discussion is sediment production and transport. Despite of the importance of sediments in the alpine water cycle (Hegg et al., 2006), work in this field in Switzerland essentially focused on process observations (Rickenmann et al., 2012). Attempts were made to model sediment transport with the streamflow model PREVAH (Raymond Pralong et al., 2015), but such studies fall short of accounting for sediment source dynamics and connectivity. The modelling of sediment sources, as well as transport capacity, requires complex models that yield reliable spatial patterns of hydrological processes.

A single model has been developed for this purpose in Switzerland, TOPKAPI-ETH, which has been modified to account for river bed erosion and deposition processes using a sub-grid modelling scheme (Konz et al., 2011). This modification allows the simulation of erosion and deposition patterns, sediment transport rates, and evolution of the channel slope. Battista et al. (2020b) later developed a new soil erosion and sediment transport module for TOPKAPI-ETH to investigate the effects of precipitation and surface erodibility and their spatial variability on sediment fluxes, and to analyse the role of localised sediment sources (Battista et al., 2020a).

Sediment management, for example, in the context of hydropower production (Raymond Pralong et al., 2015; Gabbud and Lane, 2016), is gaining importance in Alpine countries and might drive the development of new modules to simulate the interplay of hydrological and geomorphological processes at the catchment scale.

### 2.1.3 Ecohydrology

Ecohydrology studies the feedbacks between ecosystems and the water cycle, at stream reach or catchment-scale (Tague et al., 2020). To date, catchment-scale studies with ecohydrological models accounting for feedback with vegetation are scarce in Switzerland. An early example is a work of Zierl and Bugmann (2005), who used the model RHESSys to study climate and land-use change impacts on alpine streamflow in Switzerland. Later, Fatichi et al. (2012a,b) developed an ecohydrological model, called Tethys-Chloris (T&C), to simulate vegetation-hydrology interactions at large scales. It has been applied to catchments in Switzerland to study soil moisture spatiotemporal dynamics (Fatichi et al., 2015a), as well as to assess the vulnerability of Alpine ecosystems to climate change (Mastrotheodoros et al., 2019).

Another approach consists in coupling ecosystem models to distributed hydrological models, such as TOPKAPI-ETH for the analysis of the interactions between rivers, aquifers and ecosystems (Foglia et al., 2009; Pappas et al., 2015). In the context of simpler streamflow models, model coupling for ecohydrological purposes is limited to one-way coupling, as e.g. in the example of PREVAH that was coupled to a model for bedload

transport and channel morphodynamics to assess climate change impacts on brown trouts ([Junker et al., 2015](#)).

Most hydrological studies that analyse the interplay of vegetation and hydrology focus on the effect of land-use change by analysing different vegetation scenarios without modeling the actual feedback, in Switzerland as well as internationally ([Dwarakish and Ganasri, 2015](#)). We further discuss such land-use change studies in Sect. 2.2.3. Overall, catchment-scale ecohydrological studies remain rare in Switzerland, a situation that might change due to increasing awareness of human pressure on natural ecosystems and potential water use conflicts ([Milano et al., 2016](#)).

#### 2.1.4 Anthropogenic streamflow modifications and water quality

Anthropogenic impacts on water flow in the stream network are growing with expanding urbanisation and related hydraulic infrastructure, with efforts to produce more hydropower ([Schaeffli et al., 2019](#)) or with growing irrigation infrastructure. Related streamflow perturbations should not be ignored in hydrological modelling, but can be challenging to incorporate in a model due namely to the absence of detailed data on anthropogenic water use ([FOEN, 2021](#)).

In Switzerland, large hydraulic infrastructure is dominantly related to hydropower operations, including large dams and accumulation reservoirs and water diversions ([Schaeffli et al., 2019](#)). Thus, specific modules have been implemented in several hydrological models, which in some cases simply led to model extensions, e.g. for WaSiM ([Verbunt et al., 2005](#)) or TOPKAPI-ETH ([Fatichi et al., 2014](#)). Such model extensions were namely essential to analyse anthropogenic versus climate change effects on natural streamflow regimes ([Fatichi et al., 2014](#)) or to anticipate hydropower operations in a climate change context ([Fatichi et al., 2015b](#); [Anghileri et al., 2018](#)). One model developed in Switzerland has been specifically designed to simulate hydropower operations: RS MINERVE ([García Hernández et al., 2020](#); [Foehn et al., 2020](#)). The development of a specific model was considered necessary to simulate complex hydropower operations in the Valais region (upper Rhone catchment), which shows a particularly high density of hydropower infrastructure.

Compared to hydropower, the main other water user, agriculture, has not received much attention in terms of hydrologic model development and streamflow simulation at catchment scale. A key reason might be that in Switzerland, limited water availability and potential droughts has only recently become an issue ([FOEN, 2021](#)). One example that we could find is the study by [Fuhrer and Jasper \(2012\)](#) that has shown that WaSiM is suitable to study the demand and supply of water for agriculture, including irrigation. In this area, models that are widely used internationally have seen little application in Switzerland. One such example is SWAT and SWAT+ ([Bieger et al., 2017](#)), which – given their user-friendliness ([Abbaspour et al., 2007](#)) – might see more applications in the future despite not being specifically designed for alpine environments ([Rahman et al., 2014](#); [Andrianaki et al., 2019](#)). The need to model the feedback of agricultural water use and the catchment-scale hydrological response could lead to further hydrological model diversification; corresponding knowledge is currently missing in Switzerland ([FOEN, 2021](#)).

Future developments or applications of hydrological models specifically designed to reflect agricultural water use in an alpine context might in particular also be driven by the need to simulate corresponding water quality dynamics. While there are studies related to water quality at very small scales (area of less than 2 km<sup>2</sup>; see for example [Frey et al., 2011](#); [Gassmann et al., 2013](#); [Ammann et al., 2020](#)), where intensive field studies are manageable and local-scale transport can be more easily resolved, only few models exist at a catchment-scale of several square kilometers ([Wittmer et al., 2013](#)). Water quality studies at meso-catchment scales are even more rare to date in Switzerland. One example is the work of [Abbaspour et al. \(2007\)](#) who tested SWAT for modelling water quality and nutrient loads in the Thur catchment (1700 km<sup>2</sup>): they concluded that "in watersheds similar to Thur – with good data quality and availability and relatively small model uncertainty – it is feasible to use SWAT". Even the basic water quality variable, water temperature, has only received little attention in catchment-scale hydrology in Switzerland. It led to the development of an Alpine3D extension, Streamflow ([Gallice et al., 2016](#); [Michel et al., 2021](#)).

## 2.2 Study context

### 2.2.1 Model improvement and uncertainty analysis

A large body of the international hydrologic modelling literature focuses on model performance with respect to reproducing observed streamflow (Clark et al., 2011; Beven, 2011), e.g. as a function of model parameterisations (Girons Lopez et al., 2020), of spatio-temporal model resolution (Brunner et al., 2019c), of precipitation input data (Sikorska and Seibert, 2016; Sikorska et al., 2017; Müller-Thomy and Sikorska-Senoner, 2019), or parameter estimation techniques (Foglia et al., 2009; Cullmann et al., 2011). However, in the context of model diversity, this field of research has overall little impact because most modelling groups who work on such theoretical aspects often use their in-house models for proofs of concepts or to improve them (e.g. Schaeffli et al. 2007b; Hingray et al. 2010).

Model performance studies cover, for example, the integration of glacier mass balance data (Finger et al., 2015; Schaeffli and Huss, 2011), snow data assimilation (Griessinger et al., 2016), accounting for streamflow observation uncertainty (Westerberg et al., 2020), the influence of spatial or temporal resolution of hydro-meteorological input (Girons Lopez and Seibert, 2016; Felder and Weingartner, 2017; Sikorska and Seibert, 2018), integration of citizen science data (Etter et al., 2020), error correction in forecasting chains (Bogner et al., 2018b), assessment of spatial pattern reproduction of soil moisture and evapotranspiration (Rössler and Löffler, 2010; Zappa and Gurtz, 2003) and of snow (Zappa, 2008), and the comparison of various climate postprocessing methods (Rössler et al., 2019).

Overall, there are only a few parameter regionalisation studies, i.e. studies on the spatial transfer of model parameters, a key topic for hydrologic prediction in catchments without streamflow observations (Guo et al., 2021). On an international level, this question led to the development of specific models in conjunction with spatial parameter transfer approaches (e.g., mHM; Samaniego et al., 2010). In Switzerland, there was rather a focus on understanding the benefit of parameter regionalisation combined with few streamflow observations for the calibration of existing models and to counterbalance sparse operational observation networks especially in mountain areas (Viviroli and Seibert, 2015).

### 2.2.2 Characterisation and quantification of floods and droughts

Infrastructure planning, water resources and natural risk management heavily rely on probabilistic quantification of extremes, i.e. an estimation of what could happen in terms of floods and droughts and their associated probabilities (called return periods in hydrology). Work in this field continues to be based on statistical analyses and extrapolation of observed streamflow time series (Brunner et al., 2018a; Asadi et al., 2018), but hydrological models play an ever-increasing role to complement missing or insufficient streamflow data.

Any model-based flood estimation method is computationally intensive since long model simulation runs are required at an hourly time step (see Sikorska-Senoner et al., 2020, about reducing computational requirements for extreme flood estimation by hydrological modelling). Accordingly, simple models such as PREVAH (Viviroli et al., 2009c,a; Felder and Weingartner, 2017), HBV-light (Sikorska et al., 2017; Brunner and Sikorska-Senoner, 2019; Sikorska-Senoner et al., 2020) and RS MINERVE (Bieri and Schleiss, 2013; Zeimet et al., 2017, 2018) are often used for flood estimation; these models are all deemed to perform well enough for flood estimation in Swiss catchments by their respective authors and users. Furthermore, at the time of writing, the open-source DECIPHeR model is further developed and implemented for Swiss catchments to bring diversity in the type of models used for flood modelling (Kauzlaric, personal communication).

Other more complex distributed models are also used for flood modelling, but more often on an event-based scale, as in the case of a reconstruction of the 1816 Tambora eruption and its impact on floods in the upper Rhine basin with WaSiM (see Fig. 1; Rössler and Brönnimann, 2018). Such a model can be highly relevant to study specific flood types that involve a detailed description of small scale processes, such as to analyse rain-on-snow flood events (Rössler et al., 2014, with WaSiM) or the interplay of rainfall temporal variability and the clustering of saturated areas (Paschalis et al., 2014, with TOPKAPI-ETH)

Work on droughts is much less abundant in Switzerland than work on floods, which is related to the fact that missing water was, in the past, not a hot topic in this country known as the water tower of Europe (Milano et al., 2015a). What can be highlighted here is that the same models are in use to assess droughts and floods, potentially with specific recalibration, but without modification of the model structure. This is motivated by the fact that existing models are deemed to reproduce well all dominant processes in the Swiss



environment, as, e.g., explicitly stated in the work of [Zappa and Kan \(2007\)](#) on quantifying the hydrological impact of the 2003 heatwave with a distributed version of PREVAH. It was also later on used for additional drought analyses ([Brunner et al., 2019b](#); [Zappa et al., 2019](#)), where a spatial mismatch between water scarcity and storage availability has been highlighted for Switzerland ([Brunner et al., 2019b](#)). Similarly, HBV-light served in several drought studies, such as for the definition of a new drought index that accounts for snow ([Staudinger et al., 2014](#)), the predictability of low flows ([Staudinger and Seibert, 2014](#)), or the sensitivity of catchments to meteorological droughts ([Staudinger et al., 2015](#)). It was also used to assess low flow drivers in Alpine catchments ([Arnoux et al., 2020](#)). However, significant efforts to improve the representation of groundwater and the corresponding baseflow during droughts remain to be done in Switzerland, which might lead to further model development or diversification.

### 2.2.3 Climate change and land-use change impact analysis

Climate change impact studies emerged in Switzerland in the 1990s, including a large national research programme on climate change and natural hazards ([SNFS, 2021](#)). Since then, all model-based studies are mostly conducted with the models that established themselves in Switzerland, which have, however, not been specifically designed for climate change impact analysis; detailed assessments of how well these models can simulate future conditions are largely missing. Climate change impact analyses require, among others, a good representation of the processes that play a key role in the studies. The representation of these processes in the models is discussed in Sect. 2.1, both for present and future climate conditions. These studies also require models that are not too time-consuming due to processing of long transient periods as well as due to the increasing ensemble size of modelling chains.

WaSiM was chosen by [Middelkoop et al. \(2001\)](#) for a climate change impact study primarily due to its good interpolation of meteorological data for mountain environments, and by [Jasper et al. \(2004\)](#) to assess the effect of different regional climate scenarios in the Thur and the Ticino catchments (Fig. 1). WaSiM has also been applied to assess future soil water patterns ([Jasper et al., 2006](#); [Rössler et al., 2012](#)) and future summer evapotranspiration regimes ([Calanca et al., 2006](#)), applications where a spatially detailed representation of vertical and horizontal flow processes – involving the Richards equation – is important. It was even applied for the entire Rhine basin at a 1 km<sup>2</sup> resolution down to Rotterdam by [Kleinn et al. \(2005\)](#).

TOPKAPI-ETH, the other frequently used fully distributed model with explicit simulation of horizontal and vertical fluxes, has also been applied to several climate change impact studies, such as in the analysis of internal climate variability ([Fatichi et al., 2014](#)), or the assessment of future water resources ([Finger et al., 2012](#)). It was also selected by [Fatichi et al. \(2015c\)](#), who argues that "it represents a reasonable compromise between physically meaningful representation of hydrological processes and computational time for large-scale (>1000 km<sup>2</sup>), long-term (>20 yr), high-resolution (<1 km<sup>2</sup>) distributed simulations".

However, the most widely used models to study climate change impact on streamflow are to date the so-called reservoir-based models PREVAH ([Köplin et al. 2012](#); [Speich et al. 2015](#); [Milano et al. 2015b](#); [Brunner et al. 2019a](#) and others; see Supplementary material) and HBV-light ([Etter et al. 2017](#); [Hakala et al. 2020](#); [Brunner et al. 2018b](#); [Jenicek et al. 2018](#) and others). In the western part of Switzerland, RS MINERVE and GSM-SOCONT have been used, especially for high elevation sites ([Horton et al., 2006](#); [Uhlmann et al., 2013a,b](#); [Terrier et al., 2015](#)). The rationale for using these models is well summarized by [Köplin et al. \(2010\)](#) who, for PREVAH, states that the model "has been developed especially to suit conditions in mountainous environments" and that it "has proved to be a reliable and flexible tool for various scopes of application and climate conditions ranging from drought analysis over water balance modelling to flood estimation and forecasting".

One point to note is that the adequacy of the models to a different climate is generally not discussed. References to previous studies are sometimes provided, without the latter having addressed this point explicitly. While it is relatively easy to demonstrate a model's ability to reproduce floods or drought conditions, its transferability to other climate conditions is more difficult to prove directly and generally not tackled (see Sect. 4).

Compared to climate change impact analysis, land-use change studies are rare in Switzerland. Examples are the work on the effect of forest change by [Köplin et al. \(2013\)](#), [Schattan et al. \(2013\)](#), and [Speich et al. \(2020\)](#), all three with PREVAH or by [Alaoui et al. \(2014\)](#) with WaSiM. This scarcity of detailed land-use change studies might be explained by the dominance of climate change impact studies over the last few decades.

## 2.2.4 Operational forecasting

The ever increasing need for reliable real-time streamflow forecasts leads to a continuous evolution of the underlying hydro-meteorological modelling systems. Operational forecasting started with deterministic forecasts from a single meteorological forecast applied to a single hydrological model; today, users expect full probabilistic ensemble forecasts at hourly time scales, updated every few hours and with several meteorological inputs applied to different hydrological models (Jasper and Ebel, 2016). Coupled atmospheric–hydrologic ensemble prediction systems were proven to provide better forecasts than deterministic simulations (Verbunt et al., 2007; Zappa et al., 2008; Jaun et al., 2008; Liechti et al., 2013). These might also include data assimilation schemes (Jörg-Hess et al., 2015) or the assessment of hydrologic uncertainty related to meteorological forcing, model parameters and initial conditions (Jaun and Ahrens, 2009; Zappa et al., 2011; Fundel and Zappa, 2011).

Such modern forecasting systems require hydrological models that provide forecasts at many locations in a stream network, and that includes the effect of hydraulic infrastructures (e.g., of hydropower water intakes and accumulation lakes, see Sect. 2.1.4). Since the early times of flood forecasting in Switzerland, HBV and PREVAH were used in governmental offices (Jasper and Ebel, 2016) as well as in research institutes because of their relative simplicity and low computational costs (Verbunt et al., 2006; Addor et al., 2011; Murphy et al., 2019; Antonetti et al., 2019). Along with HBV, PREVAH and LARSIM, WaSiM is today part of the Swiss operational ensemble forecasting system (Jasper and Ebel, 2016), which uses the FEWS platform (Flood Early Warning System; Werner et al., 2013) to provide forecasts for the cantonal authorities and the public (Swiss Federal Office for the Environment, 2019). A key advantage of the WaSiM model is that it can explicitly account for lake regulations and hydropower operations (J. Schulla, personal communication, October 23, 2020). WaSiM has also been used for research studies on improving operational flood forecasting in mountainous areas (Jasper et al., 2002; Jasper and Kaufmann, 2003; Ahrens, 2003; Ahrens et al., 2003).

In parallel to the models mentioned above, RS MINERVE is being used as a specific flood forecasting tool for the upper Rhone river catchment, a large catchment (5220 km<sup>2</sup>, see Fig. 1) strongly influenced by glacier melt and hydropower production (García Hernández et al., 2009b,a; Jordan et al., 2010). The model has been primarily developed for this application. Furthermore, its interpolation of the meteorological forcing and its partitioning between rain and snowfall have been enhanced to improve the forecasts in this catchment (Tobin et al., 2011, 2012).

Applications or studies of subseasonal to seasonal (lead times up to 4 to 6 weeks) streamflow forecasts are relatively scarce in Switzerland, but few applications using PREVAH exist (Monhart et al., 2019; Anghileri et al., 2019). PREVAH also plays a prominent role in operational drought forecasting (Fundel et al., 2013; Jörg-Hess et al., 2015; Bogner et al., 2018a) and within the operational Swiss drought information platform (Stähli et al., 2013).

## 2.2.5 Large scale modelling

To complete the picture, we address here the application of some international hydrological models implemented for Europe or large European river basins such as the Rhine and thus covering at least a significant part of the hydrological domain of Switzerland (Fig. 1). However, we restrict ourselves to those models whose code is publicly available and/or whose results are published and/or directly available for Swiss basins.

Kauffeldt et al. (2016) presented a technical review of large-scale hydrological models with regard to their suitability for the European Flood Awareness System (EFAS). Specific criteria must be met for a model to be suitable for continental-scale forecasting, such as a representation of all major processes in the domain, flexibility in resolution and spatial discretisation, a possibility for data assimilation, etc. (Kauffeldt et al., 2016). Amongst the models evaluated in the study, three have been specifically deployed for Europe: LISFLOOD, HYPE and mHM (see Appendix 1). While LISFLOOD and HYPE (or E-HYPE for the version covering the pan-European continent) are already running operationally (see Appendix 1) at the European scale, mHM has only recently been applied for the development and evaluation of a pan-European multi-model seasonal hydrological forecasting system (Wanders et al., 2019).

Several other models have been applied specifically for the Rhine basin, mainly focusing on forecasting discharge or climate change impact applications. Examples include the so-called wflow\_hbv model (van Osnabrugge et al., 2017, van Osnabrugge et al., 2019 and van Osnabrugge 2020) for hourly/daily streamflow forecasting of the Rhine, allowing lake level data assimilation. Another example is the LARSIM model, which

was implemented at a 1 km<sup>2</sup> resolution in combination with HBV-light to assess the origin of streamflow components (Stahl et al., 2017). The major regulated and unregulated lakes were included in LARSIM, as well as four of the most influent “clustered” hydropower reservoirs present on the upper Aare, upper Reuss, upper Rhine, and in the Ill river catchment (Fig. 1).

In general, the skill of most large scale models is found to be inferior near the main Alpine ridge compared to mountainous or lowland areas. The high Alpine catchments have been identified early as posing a major challenge to large scale hydrological modelling (Kleinn et al., 2005). Besides larger errors in the meteorological variables (precipitation in particular) and the important effect of water management practices, the smaller the catchment area and the greater the elevation ranges, the more detailed the model structure and the spatial resolution need to be to achieve good model performances (Gurtz et al., 2003). While most likely being cancelled out downstream (Kleinn et al., 2005), these problems remain yet to be addressed in large scale modelling and certainly partly explain why specific Swiss-scale models continue to be extremely popular.

### 3 The motivations behind the model choice

In total, we reviewed 157 peer-reviewed journal articles on hydrological modelling in Swiss catchments (see Table 1 in the Supporting Information). Excluding the large scale applications (Section 2.2.5), a Swiss hydrological model (category D or E in Table 1) is selected in 93% of cases, leaving little room for international models. PREVAH takes the lion’s share with about 30% of the applications, followed by HBV-light (16.5%) and WaSiM (14.6%). The most used international model is SWAT with a small 4% usage (7 cases), mainly related to research led from outside Switzerland.

As depicted in Sect. 2, some models are specialised for certain processes, such as Alpine3D for snow and GERM for glaciers, and are thus proportionally more used in these contexts (Fig. 2). TOPKAPI-ETH tends to be more used for applications that require a spatially-distributed output of horizontal and vertical fluxes, e.g. in view of coupling to another model. RS specifically targets flood modelling and hydropower operations, as it was designed for operational flood mitigation with hydropower plants. The three most used models, i.e. PREVAH, HBV-light and WaSiM, are general models and are applied to different topics, such as climate change impact studies, floods, droughts, cryosphere-related processes, and operational forecasting (Fig. 2).

In the analysed articles, about 25% of the authors specifically address the model’s adequacy with the context or the landscape. However, this does not mean that adequacy has been formally tested or that it actually drove the choice of the model, but rather that the model is argued as suitable to the intended application. About 53% of the articles do not mention the adequacy of the model to the context. The rest provide some description of the model characteristics that might be interpreted as arguments for suitability to the case study. Furthermore, there are only few examples where the authors explicitly discuss their perceptual model (Beven and Chappell, *In rev.*), i.e. their perception of how nature works, which is generally left to papers dedicated to model development.

Other factors than adequacy can drive the model choice: some of a practical nature and others of a more subjective nature. Addor and Melsen (2019) argue that the choice of a model is driven by legacy rather than adequacy, where by legacy they understand: “practicality, convenience, experience, and habit”. This can include, on the one hand, the experience available in the modelling group and, on the other hand, code and data availability. Some of these practical aspects are not reflected in the literature: Peer-reviewed articles involve a reshaping of the narration (Pontille, 2007; Rinck, 2010; Babel et al., 2019), i.e. the chronology of decisions is often modified to fit a standard paper structure and the drivers behind the decisions are adapted retrospectively. The practical aspects that drove model selection are thus difficult to assess objectively without additional information. For that reason, we conducted a survey inviting all first authors of the analysed papers to participate, as well as other actors in the research community actively using hydrological modelling approaches in Switzerland. About 100 persons were contacted, and 50 took part in the survey. The web-based survey could be completed anonymously.

The survey started with four general questions on the experience of the researcher in the domain of hydrological modelling and model development (Fig. 3). The objective of this first part was to provide a context to the answers given in the rest of the survey. The survey then included multiple-choice questions (Fig. 4) addressing the choice of the hydrological model used by the researcher for previous work (14 questions), the factors that the researcher would nowadays consider important in model selection (nine questions), and finally, the researcher opinion on multi-modelling approaches (four questions; treated at Sect. 4). The answers shown

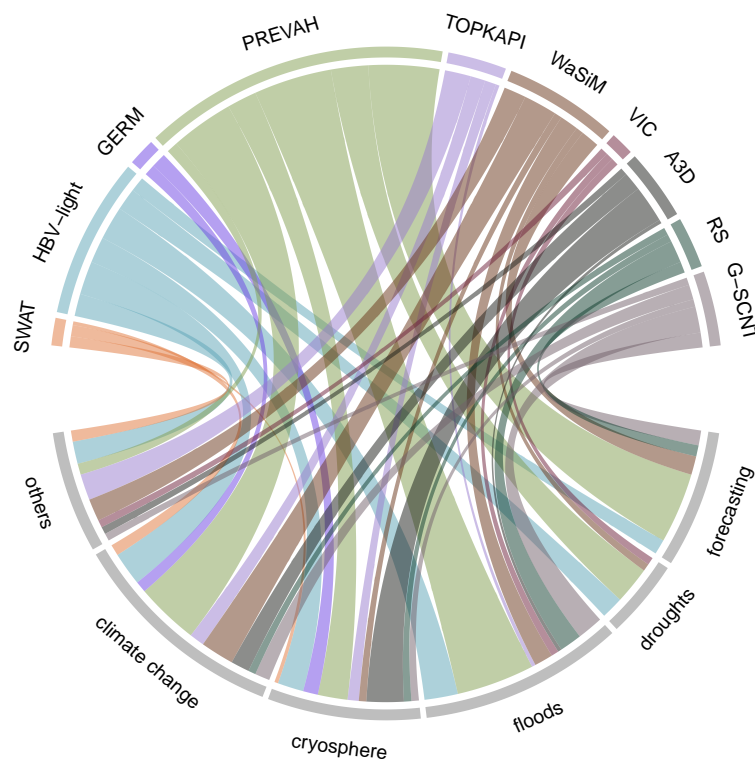


Figure 2 Hydrological models applied to different contexts in Switzerland. The importance of the link is proportional to the number of scientific articles. The importance of some models can be inflated by the fact that an article can address multiple contexts, such as floods and climate change. Models with too few use cases (less than three) are not included for the sake of clarity. A3D stands for Alpine3D and G-SCNT for GSM-SOCONT.

in Fig. 4 have been stratified based on the model development experience of the researcher (Fig. 3d). The stratification based on experience was most relevant compared to the others.

We first look at the effect of the host institutions of the first author. About half (52.5%) of the researchers stayed at the same institute when they published – as first author – most of their articles on hydrological modelling (Fig. 3b). In such a case, the model choice is likely strongly biased in favour of the model developed and used at the corresponding research institute (Addor and Melsen, 2019). Indeed, in 66% of analysed articles, the first author is affiliated with the institute where the chosen model is being developed. When asked if the model developed at the institute was chosen without further comparison, the researcher's opinions differed (Fig. 4). While 36.2% agreed with that statement (the percentage of agreement is defined here as the sum of the frequency of the two positive categories, i.e. "relevant" and "highly relevant"), 44.7% did not agree, including both non-developers and researchers mostly involved in model development. Researchers with less development experience were also more influenced by their superior when it came to the model choice than researchers with more experience. 72% of all researchers considered know-how at the institute as a relevant driver for previous work (67.4% for the present situation), significantly more than the personal knowledge of a model (which, however, seems much more important for the present situation). The strong link between the institutes and some models (see also Fig. 5) brings the advantage that the model at hand is thus well known, that the code is available, and that specialists for potential modifications are present. All of these factors are a positive aspect, as in-house experience (or habits) can contribute to efficiency and expertise (Babel et al., 2019). Care has to be taken that habits do not come at the expense of adequacy. The risk of habits lies in the automatism of our decisions (Babel et al., 2019), and in the Hammer and Nail syndrome ("if all you have is a hammer, everything looks like a nail"), i.e. a researcher will seek to solve every problem with the known model (Hamalainen, 2015).

When the chosen model is not developed at the institute where the research is conducted, collaborations are

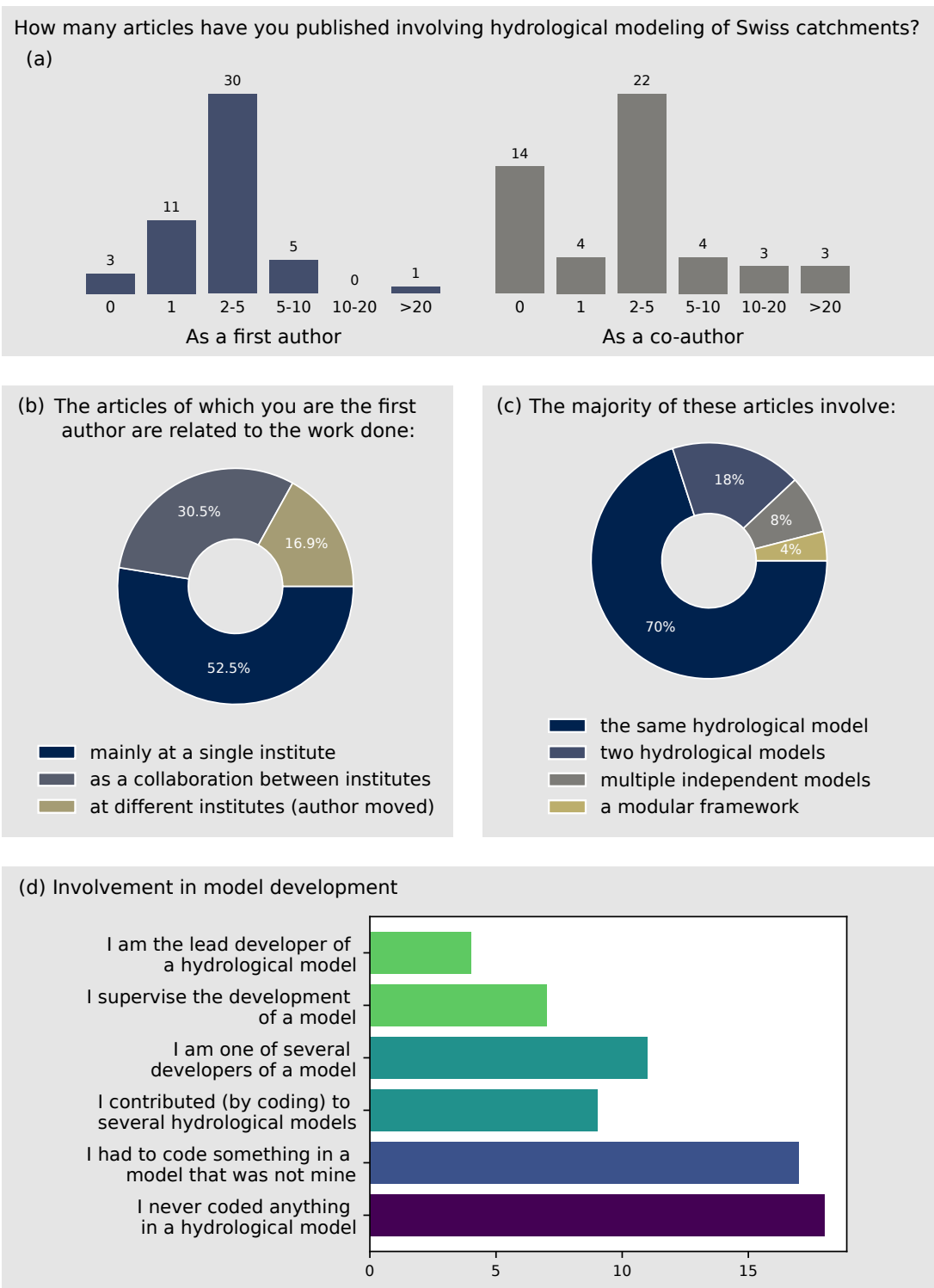


Figure 3 Survey results: answers to the general questions.



Figure 4 Results for the survey questions about model selection. The histograms have been stratified based on the involvement of the researcher in model development (Fig. 3d). As the question on the involvement offered multiple selections, the stratification was performed according to the hierarchy of Fig. 3d, and researchers were thus assigned to the highest selected class.

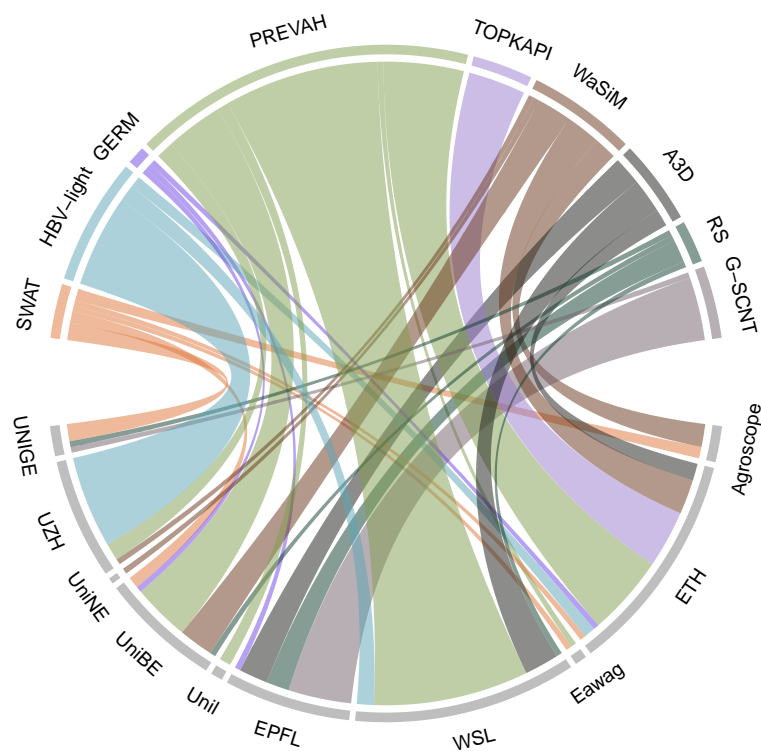


Figure 5 Links between hydrological models and the Swiss institutes that use them. Same conventions as Fig. 2. Models or institutes with too few use cases are not included.

often established with the model developer or lead researcher. Consequently, the model developer (or team leader) is co-authoring the paper in 72% of the published articles. Survey results also show that collaboration was a driving factor for 50% of the researchers (Fig. 4). Another reason driving the hydrological model choice is the reuse of a model already set up for a catchment of interest, sometimes without the need to recalibrate it. About 20% of the articles explicitly state that the applied model comes from another study. This number should likely be higher, as some authors publish multiple articles targeting different topics using a single model setup without explicitly mentioning it. The survey revealed that 51% of the researchers agreed that model setups had been reused (Fig. 4).

Access to the model source code has been qualified as a relevant driving factor by 55.1% of the researchers for previous work, unsurprisingly with a clear contribution from model developers (Fig. 4). This number even increases to 81.6% for the current situation, which reveals a strong desire to be able to edit the model code to adapt it when necessary. However, despite of access to the source code, researchers do not necessarily modify it. This might also partly be a psychological factor, i.e. people feel more secure to invest time and energy in a model that they know they can eventually adapt, rather than being stuck in a situation where they cannot modify the model code. Although access to the model code is important to many authors, it does not mean that everyone sees the necessity of public availability (as open-source) of the model code. Indeed, 61.2% of the researchers considered the public availability of the model code as important to them, which is high; but the number is considerably smaller than the 81.6% of researchers who would just like to have (at least personal) access to the code. Some models have been open-source for a long time, such as VIC or FUSE (Clark et al., 2008), but either were used very sporadically for an individual catchment – generally by foreign institutions – or have not yet been used in Switzerland.

Adequacy to specific processes or landscapes was considered as important in model selection by 57.1% of the researchers for past studies and by 65.3% for the current situation (Fig. 4). These numbers seem to nicely fit to the comparatively lower numbers regarding technical constraints and data availability (36.7%), or project-related constraints (26.5%). Interestingly, these numbers are of the same order of magnitude than for the ease of use (30.6%), even if ease of use seems to become more important over the course of the career

(with 55.1% for today's choices).

The widespread usage of a model (34.7%) is of intermediate importance for today's choices. Similarly, the presence of a strong model developer community is also deemed of intermediate importance. Jointly, these two results might reflect that model diversity (rather than convergence towards a widely used model with a strong community) is not perceived as being problematic in the hydrological model user and developer community.

External factors also influence the model choice. While education seems to play only a marginal role, sociological aspects, such as recommendations from colleagues or peers, have a non-negligible impact (38.8%), mainly among researchers not involved in model development. [Babel et al. \(2019\)](#) showed, based on interviews with model developers, that the choices made during model conception and development can be indirectly influenced by various actors. Some transferred knowledge becomes self-evident for the developer, who embraces external influences. This process of incorporation of external influences is also likely to impact the model choice.

Finally, emotions are not stated as a key factor, mainly for past work. We would have expected a stronger signal of personal attachment of the developers to their model. The survey terminology was maybe not ideal here, leading to biases in the answers; an emotional relationship to a model might be seen as something negative. Other terms, such as 'familiarity' or 'confidence' might have led to different results. This dimension is highly subjective, and we dare to suggest that this subconscious driver is more important than stated on the survey answers, mainly for developers invested in a specific model. Indeed, [Chamberlin \(1890\)](#) shows that people tend to develop a parental affection for their theories, which can be transposed to models, and which hinders recognition of the benefits of other approaches. Moreover, emotions were shown to play a significant role in decision making and can be seen as "invisible actors in the system of problem solving" ([Hamalainen, 2015](#)).

## 4 On model structural uncertainty and multi-model approaches

The World Meteorological Organization (WMO) used to carry out comparisons of hydrological models and publish the results in Operational hydrology reports ([WMO, 1986, 1992a](#)). In this context, different international models were compared over various catchments, including the Dischma basin in Switzerland. The Snowmelt Runoff Model (SRM, [Martinec, 1975](#), see supplementary material) has also been assessed in these early model comparisons ([WMO, 1986, 1992a](#)).

Since then, few model intercomparison studies have been conducted in Switzerland. The existing ones are studies on what we can gain from model complexity in terms of model performance. For example, [Gurtz et al. \(2003\)](#) compared PREVAH and WaSiM for two mountainous catchments, showing that, despite of their significant complexity difference, both models show a similar performance in terms of streamflow simulation. This result was also reproduced in the study by [Orth et al. \(2015\)](#) comparing HBV-light, PREVAH, and an even simpler model, but with performance varying depending on the considered hydrological variable or hydrological conditions. They highlighted that that there is no single model that is best suited to all hydrological conditions.

Similarly, few studies are relying on a multi-model approach to predict future hydrologic behaviour. The use of multiple hydrological models aims at accounting for the uncertainty associated with the models' structure, their numerical implementation, and their processes representation. The idea is to consider a diversity of models that represent the uncertainty at play ([Babel et al., 2019](#)). Such multi-model approaches are in particular extremely relevant for probabilistic flood forecasting ([Kauffeldt et al., 2016](#)) or for long term climate change impact predictions ([Kobierska et al., 2011, 2013](#); [Andrianaki et al., 2019](#)), where different model formulations can lead to different model sensitivities with respect to the climate forcing and thus to different results.

In the context of climate change impact analysis, multi-models are in fact of key importance to understand the dominance of different uncertainty sources, i.e. those related to the climate change scenarios and those related to the hydrological modelling itself. [Bosshard et al. \(2013\)](#), for example, showed that none of the uncertainty sources they assessed is negligible, and that the respective contributions to the uncertainty vary over the year with a larger contribution from the hydrological model in winter and spring. Similarly, [Addor et al. \(2014\)](#) assessed the impact of climate change on hydrological regimes comparing models of different complexity (HBV-light, PREVAH, WaSiM) for six catchments in Switzerland. The hydrological models contributed



significantly to the overall climate change impact uncertainty in the (partially) glacierized catchments. This finding was reproduced in the recent re-evaluation of climate change impacts on Swiss hydrology (Hydro-CH2018, FOEN, 2021) with a similar hydrologic model ensemble (HBV-light and two different versions of PREVAH). It showed that the largest relative differences between the models occur especially in glaciated or high-elevation catchments in the low flow seasons (winter and spring) or in summer in terms of absolute differences in simulated streamflow.

It is noteworthy that in all these studies, it was assumed that the parameters calibrated for the present conditions also apply in the future. As shown by Melsen and Guse (2021) for 605 catchments in the United States with the models SAC (Sacramento Soil Moisture Accounting model; Burnash et al., 1973), VIC, and HBV, this is an important and specific uncertainty factor in climate change impact modelling chains, but how to address this question remains one of the key challenge for hydrological modelling, and has not seen any specific developments in Switzerland so far.

Overall, multi-model studies are still rare in Switzerland. This is in strong contradiction with our survey, which revealed that 80% of the researchers considered the impact of the model structure as an important source of uncertainty, and 72% supported that multi-models should be considered (Fig. 4). However, only about 20% claimed to do it regularly, while 53% admitted to (almost) never do it. The first reason given for not doing multi-model approaches is the lack of resources (time or/and money) for such exercise (supported by 76.6% of the participants). The second reason is that it requires too much effort to set up another model (61.7% of the participants); the third one is that other sources of uncertainty are considered more significant (40.4%), and the fourth is related to the lack of know-how of another hydrological model (31.9%). In addition, other reasons were provided, such as the carbon footprint of simulations and thus the need to do as few simulations as possible with improved models or the difficulty to interpret the results. Other participants suggested working with a single model but testing multiple structures and parameter values or working with model variants (such as in the work of Girons Lopez et al. (2020), who tested numerous snow routines with different degree of complexity).

Researchers are used to work with a single hydrological model (70% of the survey participants; Fig. 3) and rarely learn to use another model. As discussed above, the use of another hydrological model requires a substantial effort. An eased assessment of multiple structures is the objective of the so-called "modular modelling frameworks" (used only 4% of the time by the survey participants), strongly encouraged by Clark et al. (2011). Modular modelling frameworks allow hypothesis testing by generating models using different modules and variants of numerical implementations (Follette et al., 2021). Nowadays, several of these frameworks exist, such as SUPERFLEX, FUSE (Clark et al., 2008), PERSiST (Futter et al., 2014), ECHSE (Kneis, 2015), MARRMoT (Knoben et al., 2019), Raven (Craig et al., 2020), and SUMMA (Clark et al., 2015). Such modular frameworks can favour the generation and testing of new hypotheses about dominant hydrological processes and how to encode them in models. An example in Switzerland is given by Dal Molin et al. (2020b), who discusses, based on the SUPERFLEX framework, how to flexibly adapt the model structure to integrate new hypotheses about dominant hydrological processes.

Modular frameworks have theoretically the potential to counter-act model diversification, since they assemble different model structures in a single framework. The current experience and the survey show, however, that modular frameworks are not easily adopted by the modelling community.

## 5 Discussion and conclusion

The objective of this work was to disentangle the motivations and reasons behind the choices that led to the current co-existence of a wide range of streamflow models, even at the scale of a small country. A key result of the literature review is the fact that published work crucially lacks adequately addressing model adequacy for the study context or the landscape, which not only impedes objective insights into decision processes involved in model choice, but which is also in contradiction to the web-based survey where model adequacy to the analysed landscape was of foremost importance for model developers and users.

This model adequacy to the landscape might at least partly explain the lack of adoption of international or large-scale models. Researchers active in Switzerland are, in fact, very keen on using local models, either developed in Switzerland (93% of the case studies) or even at their own research institute (66% of the articles analysed). This strong link between models and institutes provides the benefit of expertise and efficiency, but at the risk of context inadequacy for the selected models and of automatism in decisions (Babel et al.,

2019). This model-institute link is likely to be one of the main causes of the existence of so many hydrological models, since each research group develops its own tools.

It is important to underline here that hydrological model diversity is interesting to represent the uncertainty related to the hydrological model structure or implementation (Babel et al., 2019) and that there will never be a single model valid for all applications (Hamalainen, 2015). Thus, model diversity is indeed desirable, as long as it is used to assess model variability. However, in Switzerland, multi-model applications to harness this diversity are largely missing. A first barrier to this approach is the challenge to master multiple models. In this regard, modular modelling frameworks could help to move in this direction, but our review shows that they are not easily adopted.

This lack of multi-model studies is in contradiction with the importance that is attributed to such studies in our author survey. This finding is certainly transferable to the larger international modelling community. Many of us advocate the development of methods that facilitate robust model development (Zheng et al., 2018), but most of us do not apply these principles ourselves. This contradiction between what we think that we should do (multi-model analysis) and what we actually do (use our local model) might be partially related to research funding, in Switzerland and elsewhere: Hydrological studies tend to receive small-scale funding (limited in time and resources) from local or regional authorities or private actors (such as hydropower companies), which does not push towards the use of widely accepted international models or towards the development of model intercomparison studies, but which can favour the development of local models. Short projects and associated efficiency constraints also push towards the reuse of a certain model setup rather than towards the optimal or most robust modelling solution for the research questions at hand.

While we see an impressive model diversity at the single or few catchments scale, it is noteworthy that our review points towards an important national-scale shortcoming: some catchments have been "over-modelled" (e.g. Thur, Dischma) – albeit with little model intercomparison (see Sect. 4) – while there is a clear lack of large-scale or national studies. In particular, the few available studies often do not cross the Swiss national border, even though the "hydrological Switzerland" extends to its neighbouring countries (Fig. 1). The absence of such larger scale studies might be explained not only by the lack of resources, but also by shortcomings and challenges more widely encountered in hydrological modelling over larger domains. These include differing quality and scales of input data and streamflow observations and large heterogeneity in hydrological behaviour (possibly requiring more than one specialized model). Yet, this heterogeneity may in fact provide us with the opportunity to improve our understanding of differences in model adequacy and "benchmarking" model performance (Newman et al., 2017; Seibert et al., 2018b; Lane et al., 2019), and to draw most needed conclusions on the robustness of generalizations and on estimation uncertainty (Gupta et al., 2014; McMillan et al., 2016).

Two reasons might, in our view, favour a growing adoption of international models in Switzerland or at similar regional scales and thereby slow down the rhythm of local model diversification: The first is to account for processes that most local models have not specialised in, such as, in the Swiss case, agricultural water use or ecosystem interactions. The second reason is the growing adoption of version control systems that allow collaboration on open-source code with unprecedented ease. Indeed, as the survey revealed, most researchers desire access to the source code, for potential model adaptation to specific needs. Open-source models thus offer an interesting alternative for research projects that go beyond the capabilities of in-house models. This might ultimately contribute to model improvements and lead to an international community-driven dynamic that is beneficial for all, model developers as well as model users. The future will reveal how this might affect model diversity at international scale.

To conclude, we would like to emphasize that despite some local specificities related to the alpine context, the key findings of our study are readily transferable to other contexts or scales: a foremost driver of hydrological model diversity is the use of local models, to benefit from local know-how as well as to maximize model adequacy to the analyzed landscape. Modelling contexts and landscapes might change, but our scientific, practical, and financial incentives or constraints are pulling us in the same direction. The following take-home messages, derived from this review, might improve the navigation of the hydrological modelling landscape in the future and be beneficial for future model development:

- Modelling studies should come with a succinct statement about the model choice even if the choice was purely heuristic and, for example, linked to the research institute. This might in particular also contribute to the reproducibility of all modelling decisions and thus of the work.
- Multi-model studies rely on model diversity; they are at the heart of hydrological model development and uncertainty assessment but are particularly challenging to implement. Additional efforts are needed,

both from the developer community as well as from the funding side to ease future implementations.

- High hydrological model diversity might come in pairs with a lack of diversity of studied catchments; model development might benefit from an expansion and coordination of test cases in the future.
- Current catchment-scale hydrological model diversity arose with a strong focus on water quantity and climate change impact studies. Other areas will certainly catch up, which will most probably further increase model diversity. Modular approaches and collaboration on open-source codes could become key tools to avoid an explosion of the number of models in use.

Finally, we would like to emphasize that the evolution of hydrological models and associated modelling practices is strongly linked to current developments in the field of digital scholarship and its evaluation by stakeholders such as funding agencies and career committees (David et al., 2016). How these developments are impacting model diversity remains to be assessed in future work.

## Acknowledgements

We would like to thank various Swiss and international colleagues for their help on the history of hydrological modelling in Switzerland (see Supplementary Information) and Karsten Jasper for the insight on hydrological modelling at the Swiss Federal Office for the Environment (FOEN). We are also grateful to the two reviewers who helped improving the paper, as well as to the 50 participants to the survey who provided valuable information for this analysis.

## Data availability statement

The details of the analysis of the application studies have been published as: Horton, Pascal; Schaepli, Bettina; Kauzlaric, Martina (2021), "Table listing all applications of hydrological models in Switzerland", Mendeley Data, V3, doi: 10.17632/b23fzm6ccy.3

## Appendix 1: Short model descriptions, alphabetical order

We give here some key information and references for all models discussed in the paper. The generic term "model" refers here to an ensemble of model concepts translated into equations and numerically implemented within a specific coding environment. If readily available, we give details on used coding language or on available versions, but some of these details are hard to know from published work. If applicable, we mention if the model is open-source. We call "freely available" a model that has a software implementation, which can be downloaded from the web. All hyperlinks of this section have last been accessed in June 2021.

**Alpine3D** (Lehning et al., 2006) is a model developed in Switzerland targeting surface processes in alpine environments, in particular snow processes, and is suitable for very steep terrain. It targets applications where the small-scale variability at the atmosphere-surface interface is important. Three-dimensional aspects relate to processes in the atmosphere, such as drifting snow. The snow-related processes are modelled by the snowpack and ground surface model SNOWPACK model (Bartelt and Lehning 2002; Lehning et al. 2002b,a). Alpine3D has a built-in runoff module adapted from an early version of PREVAH (Lehning et al., 2006) and a runoff module that solves the Richards equations (Wever et al., 2017). It has been recently extended by a hydrological simulation tool for streamflow and water temperature prediction called StreamFlow (see below). Alpine3D is coded in C++, is open-source (<https://gitlabext.wsl.ch/snow-models/alpine3d>), and is freely available at <https://models.slf.ch/>.

**CemaNeige-GR6J** is the daily version of a lumped, bucket-type rainfall-runoff model with six free parameters (Pushpalatha et al., 2011), combined with the CemaNeige snow module (Valéry et al., 2014a,b), which is a routine for snow accumulation and melt based on a degree-day concept that introduces two additional free parameters. GR6J is an empirical model with a root zone storage and two routing routines: one for the slow (unit hydrograph) and one for the fast flow component (unit hydrograph, a non-linear and an exponential store). Both flow components interact with the groundwater through an exchange coefficient. It has seen

one application in Switzerland for a climate change impact study (Keller et al., 2019). An R-implementation of CemaNeige-GRJ is available via <https://rdr.io/cran/airGR/>.

**DECIPHeR** (Dynamic fluxEs and Connectivity for Predictions of HydRology; Coxon et al., 2019) is an open-source flexible model framework suited for different spatial scales. The model builds on the code and key concepts of Dynamic TOPMODEL (Beven and Freer, 2001), an improvement of the original TOPMODEL (TOPography based hydrological model; Beven and Kirkby, 1979). It can be run as a lumped model (1 HRU), as semi-distributed (multiple HRUs) or as fully distributed (HRU for every single grid cell). Each HRU is treated as a separate functional unit in the model and thus allows for different process conceptualisations and parameterisations across the catchment. The model is open-source (<https://github.com/uob-hydrology/DECIPHeR>).

**GERM** (Glacier Evolution Runoff Model; Huss et al. 2008; Farinotti et al. 2012) consists of five different modules, which largely rely on existing approaches, dealing with snow accumulation, ablation, glacier evolution, evapotranspiration and runoff routing. It is a fully distributed, deterministic, conceptual model designed mainly for simulations at a daily resolution and a high spatial resolution. Glacier geometry is updated annually according to a non-parametric approach proposed by Huss et al. (2010). The hydrological module is based on the concept of linear reservoirs and distinguishes five surface types: ice, snow, rock, vegetation and open water. The model is not yet publicly available.

**GSM-SOCONT** (Glacier and SnowMelt – SOil CONTRibution model; Schaepli et al., 2005) is a semi-lumped conceptual glacio-hydrological model composed of the reservoir-based SOCONT model (consisting in a linear reservoir for the slow soil contribution and a non-linear reservoir for direct runoff) and the GSM model for the glacierized area. The SOCONT model was inspired by the GR3 model (Edijatno and Michel, 1989), which is part of the GR model family as is CemaNeige-GR6J (see above). It was developed at the Ecole Polytechnique Fédérale de Lausanne (EPFL) and is implemented in RS (see below). A Matlab version of GSM-SOCONT is distributed via <https://www.mathworks.com/>.

**HBV** (Hydrologiska Byråns Vattenbalansavdelning model; Bergström, 1976, 1992, 1995; Lindström et al., 1997) is a rainfall-runoff model that focuses on runoff generation processes, including snow. The model is characterised, by its original developers (Bergström, 1992), as being very general and is thus applied in many different geographical and climatological conditions. The HBV model can today be considered as a general modelling concept that, besides the official version developed by the Swedish Meteorological and Hydrological Institute (SMHI), has been implemented in different software (see an example below).

**HBV-light** (Seibert and Vis, 2012) is a software implementation of the HBV model (see above) that is further developed at the University of Zurich. HBV-light corresponds to a user-friendly version of the original model. It is coded in VB.NET and is freely available at <https://www.geo.uzh.ch/en/units/h2k>.

**HYPE** (HYdrological Predictions for the Environment, Lindström et al., 2010) is a large-scale semi-distributed conceptual model, designed to simulate discharge and model flow paths of nutrients in the water cycle. It is developed by the SMHI and is open-source (<https://sourceforge.net/projects/hype/>). The model divides the landscape into classes according to the soil type, land-use and altitude. The parameters are either global or coupled to the soil type or land-use. The model can simulate natural hydrological processes of snow- and glacier melt, evapotranspiration, soil moisture, groundwater and routing through rivers and lakes, but also human-induced influences, such as regulated lakes and reservoirs, water abstractions and irrigation. HYPE is run operationally by SMHI for several purposes (e.g. flood forecasting or climate change impact assessments). The version covering the pan-European continent is referred to as E-HYPE; its application is entirely based on open and readily available data sources (Donnelly et al., 2015, <https://hypeweb.smhi.se/explore-water/geographical-domains/#europehype>).

**LARSIM** (Large Area Runoff Simulation Model; Ludwig and Bremicker, 2006) is a semi-distributed hydrological model, which describes continuous runoff processes in catchments and river network. It is a non-commercial software that, albeit not being open-source, has a well-established European developer community (<https://www.larsim.info/>). The model structure (subunit) can be grid-based or based on hydrologic subcatchments. While runoff generation (described with parallel linear storage reservoirs), routing (depending on channel geometries and roughness conditions) and flow retention are simulated at the subunit scale, snow storage, evapotranspiration, interception and soil storage are simulated at a subscale level according to land-use classes. Although it does not include a glacier melt component, LARSIM includes many features that were specifically designed for its operational use as a flood forecasting model, as well as offline applications (Stahl et al., 2017).

**LISFLOOD** is a freely available GIS-based model for catchment-scale water balance simulation (Knijff et al., 2010, <https://ec-jrc.github.io/lisflood-model/>). It has been specifically designed for large river catchments, and in particular makes use of data layers that are available for the Joint Research Center (JRC) at European scale, such as land-use, soil type and texture, and river network (Thielen et al., 2009). LISFLOOD is used by the European Flood Awareness System, EFAS, for medium- and seasonal-range forecasts with a 6-hourly and daily time step. Both historical river discharge time series (1991 to near real-time) and reforecasts (1999-2018) are available on the Climate Data Store of Copernicus (<https://cds.climate.copernicus.eu/>).

**mHM** (mesoscale Hydrological model; Samaniego et al. 2010; Kumar et al. 2013; Thober et al. 2019) is a distributed hydrological model, which has the particularity of using the multiscale parameter regionalization approach (MPR, Samaniego et al., 2010) for parameter identification. It has been specifically developed to not need recalibration when applied at different resolutions (Kauffeldt et al., 2016). It is driven by hourly or daily meteorological forcings and uses observable basin physical characteristics to infer the spatial variability of the required parameters. It is developed by the Umweltforschungszentrum Leipzig and has been successfully applied to catchments ranging from 4 km<sup>2</sup> and to beyond 500,000 km<sup>2</sup>. To the best of our knowledge, it does not yet have a glacier melt component. The open-source code (Fortran) is available at <https://git.ufz.de/mhm/mhm>.

**PREVAH** (Precipitation-Runoff-Evapotranspiration HRU Model; Gurtz et al. 1999; Viviroli et al. 2009b) is a Swiss conceptual model that has been developed specifically for heterogeneous mountainous environments with highly spatially and temporally variable processes. It follows the HBV model structure, with numerous modifications, and was designed for studies in Alpine headwater basins (Orth et al., 2015). PREVAH branched out into different versions, two of which are mostly used: an HRU-based version on an hourly time step (Viviroli et al., 2009b) and a fully distributed version on a daily time step (Zappa et al., 2012; Speich et al., 2015). If not stated otherwise, this paper refers to the distributed version. Both versions are coded in Fortran. There is currently no publicly available version.

**RS** (Routing System; Dubois and Boillat, 2000; García Hernández et al., 2020; Foehn et al., 2020) is a modelling system that has been developed at the Swiss Federal Institute of Technology in Lausanne (EPFL). The freely available version (available at <https://www.crealp.ch/>) is called RS MINERVE; it was developed for operational flood forecasting in Valais (García Hernández et al., 2009b; Hamdi et al., 2005) and is maintained by the CREALP (Centre de recherche sur l'environnement alpin). RS incorporates the hydrological model GSM-SOCONT, among others, and couples it to an explicit modelling of water routing, including hydraulic and hydropower infrastructure.

**SEHR-ECHO** (Spatially Explicit Hydrologic Response model for ecohydrologic applications; Schaeffli et al., 2014) was developed at the Swiss Federal Institute of Technology in Lausanne (EPFL). The model aims at taking into account the spatial variability in the runoff generation. The catchment is divided into subcatchments connected to the river network in order to account for the origin of the different areal contributions and to route them in the river network. A Matlab implementation is distributed via <https://www.mathworks.com/>.

**StreamFlow** is an extension of Alpine3D (see above). It sums the output of Alpine3D at sub-catchment scale, determines a residence time using two linear reservoirs in series (Comola et al., 2015) and then either computes instant routing or uses the Muskingum-Cunge approach as does SEHR-ECHO (see above). All details of the model are presented in the work of Gallice et al. (2016). The model is coded in C++ and is freely available at <https://models.slf.ch/>

**SUPERFLEX** (Fenicia et al., 2011; Kavetski and Fenicia, 2011) is a flexible hydrological framework now developed at Eawag (the Swiss Federal Institute of Aquatic Science and Technology). It allows building hydrological models using generic components for hypothesis testing. The building blocks are reservoirs, lag functions, and connections. The models elaborated with SUPERFLEX can be lumped, semi-distributed (Fenicia et al., 2016) or fully distributed (Hostache et al., 2020). The original SUPERFLEX software is coded in Fortran and is not public. An open-source version written in Python, SuperflexPy, is currently available (Dal Molin et al., 2020a).

**SWAT** (Soil Water and Assessment Tool; Arnold et al., 1998) is an open-source semi-distributed, process-based hydrological modelling software (<https://swat.tamu.edu/>). Besides hydrology, other SWAT components can simulate energy balance, soil temperature, mass transport and land management at the sub-basin and HRU levels. It is one of the most applied models worldwide probably because of the broad range of hydrologic and environmental problems that can be addressed with it. A completely revised version, SWAT+ (<https://swat.tamu.edu/software/plus/>), providing more flexible spatial representations, was released

in 2021; applications in Switzerland are still to come. Recent work cited in this paper is mostly based on SWAT 2012.

**TOPKAPI-ETH** (Finger et al., 2011; Ragetti and Pellicciotti, 2012), developed at ETH Zurich, is a branch of the TOPKAPI model (TOPographic Kinematic APproximation and Integration; Todini, 1995; Todini and Ciarapica, 2002; Liu and Todini, 2002; Ciarapica and Todini, 2002). It is a fully distributed model based on the spatial integration of the kinematic wave model over the pixels of the digital elevation model (DEM) and resolves vertical and lateral water fluxes at the pixel-scale. TOPKAPI-ETH has been modified for application to mountain basins by adding a second soil layer and modules for snow, glaciers, reservoirs, water abstraction, and diversion, and a new evapotranspiration scheme (Finger et al., 2011, 2012; Fatichi et al., 2015c). It is developed in Fortran and is not publicly available.

**VIC** (Variable Infiltration Capacity model; Liang et al., 1994) is an open-source grid-based land surface hydrological modelling software whose official version is currently developed in the Department of Civil and Environmental Engineering at the University of Washington. (<https://vic.readthedocs.io/>). It is implemented so that grid cells with a resolution up to 1 km are simulated independently of each other. Sub-grid heterogeneity introduced by different land-use types and elevation is handled via statistical distributions. Routing must be performed separately with an additional routine taking care of the water transport between cells.

**WaSiM** (Water Flow and Balance Simulation Model; Schulla and Jasper, 2007; Schulla, 2009) is a fully distributed hydrological modelling system (including several sub-versions) originally developed at ETH Zurich and now further developed by a private company (<http://www.wasim.ch/>), for use in research, administration and engineering companies. The model describes the water fluxes in the unsaturated soil using the 1D-Richards equation (Richards, 1931). The transfer function (runoff concentration) can be processed through a series of linear reservoirs or with the kinematic wave approach (from one cell to another). WaSiM covers a wide range of hydrological processes relevant for alpine environments, with different implemented variants. The original model was developed under the name WaSiM-ETH; this name continues to be present on the official model web page, but the model should be referenced as *WaSiM*. The model has an official versioning system ([http://www.wasim.ch/en/the\\_model/dev\\_details.htm](http://www.wasim.ch/en/the_model/dev_details.htm)) but scientific papers do not always report the used version number. It is coded in C++ and is freely available (<http://wasim.ch/>).

**wflow** is the modular and distributed hydrological modelling platform of DELTARES (<https://www.deltares.nl/en/software/wflow-hydrology/>). *wflow\_hbv* is a fully distributed version of the conceptual HBV model (Lindström et al., 1997) - applied on a grid basis - in the wflow framework with a kinematic wave as routing instead of the original triangular routing function; the model has an interception reservoir, snow module, root zone storage, fast runoff reservoir, and a groundwater reservoir (de Boer-Euser et al., 2017). The original wflow software is written in Python and a new version is written in Julia.

## References

- Abbaspour, K. C., J. Yang, I. Maximov, R. Siber, K. Bogner, J. Mieleitner, J. Zobrist, and R. Srinivasan, 2007: Modelling hydrology and water quality in the pre-alpine/alpine Thur watershed using SWAT. *Journal of Hydrology*, **333** (2-4), 413–430, doi:10.1016/j.jhydrol.2006.09.014.
- Addor, N., S. Jaun, F. Fundel, and M. Zappa, 2011: An operational hydrological ensemble prediction system for the city of Zurich (Switzerland): skill case studies and scenarios. *Hydrology and Earth System Sciences*, **15** (7), 2327–2347, doi:10.5194/hess-15-2327-2011.
- Addor, N., and L. A. Melsen, 2019: Legacy Rather Than Adequacy, Drives the Selection of Hydrological Models. *Water Resources Research*, **55** (1), 378–390, doi:10.1029/2018wr022958.
- Addor, N., O. Rössler, N. Köplin, M. Huss, R. Weingartner, and J. Seibert, 2014: Robust changes and sources of uncertainty in the projected hydrological regimes of Swiss catchments. *Water Resources Research*, **50** (10), 7541–7562, doi:10.1002/2014WR015549.
- Ahrens, B., 2003: Rainfall downscaling in an alpine watershed applying a multiresolution approach. *Journal of Geophysical Research: Atmospheres*, **108** (8), 1–12, doi:10.1029/2001jd001485.
- Ahrens, B., K. Jasper, and J. Gurtz, 2003: On ALADIN precipitation modeling and validation in an Alpine watershed. *Annales Geophysicae*, **21** (3), 627–637, doi:10.5194/angeo-21-627-2003.

- Alaoui, A., E. Willmann, K. Jasper, G. Felder, F. Herger, J. Magnusson, and R. Weingartner, 2014: Modelling the effects of land use and climate changes on hydrology in the Ursern Valley, Switzerland. *Hydrological Processes*, **28 (10)**, 3602–3614, doi:10.1002/hyp.9895.
- Ammann, L., T. Doppler, C. Stamm, P. Reichert, and F. Fenicia, 2020: REXPO: A catchment model designed to understand and simulate the loss dynamics of plant protection products and biocides from agricultural and urban areas. *Journal of Hydrology*, **586**, doi:10.1016/j.jhydrol.2020.124812.
- Andrianaki, M., J. Shrestha, F. Kobierska, N. P. Nikolaidis, and S. M. Bernasconi, 2019: Assessment of SWAT spatial and temporal transferability for a high-altitude glacierized catchment. *Hydrology and Earth System Sciences*, **23 (8)**, 3219–3232, doi:10.5194/hess-23-3219-2019.
- Anghileri, D., M. Botter, A. Castelletti, H. Weigt, and P. Burlando, 2018: A Comparative Assessment of the Impact of Climate Change and Energy Policies on Alpine Hydropower. *Water Resources Research*, **54 (11)**, 9144–9161, doi:10.1029/2017WR022289.
- Anghileri, D., S. Monhart, C. Zhou, K. Bogner, A. Castelletti, P. Burlando, and M. Zappa, 2019: The Value of Subseasonal Hydrometeorological Forecasts to Hydropower Operations: How Much Does Preprocessing Matter? *Water Resources Research*, **55 (12)**, 10 159–10 178, doi:10.1029/2019WR025280.
- Antonetti, M., C. Horat, I. V. Sideris, and M. Zappa, 2019: Ensemble flood forecasting considering dominant runoff processes - Part 1: Set-up and application to nested basins (Emme, Switzerland). *Natural Hazards and Earth System Sciences*, **19 (1)**, 19–40, doi:10.5194/nhess-19-19-2019.
- Arnold, J. G., R. Srinivasan, R. S. Muttiah, and J. R. Williams, 1998: Large Area Hydrologic Modeling and Assessment Part I: Model Development. *Journal of the American Water Resources Association*, **34 (1)**, 73–89, doi:10.1111/j.1752-1688.1998.tb05961.x.
- Arnoux, M., P. Brunner, B. Schaeffli, R. Mott, F. Cochand, and D. Hunkeler, 2020: Low-flow behavior of alpine catchments with varying quaternary cover under current and future climatic conditions. *Journal of Hydrology*, 125591, doi:10.1016/j.jhydrol.2020.125591.
- Asadi, P., S. Engelke, and A. C. Davison, 2018: Optimal regionalization of extreme value distributions for flood estimation. *Journal of Hydrology*, **556**, 182–193.
- Aschwanden, H., and R. Weingartner, 1985: No. 65, Publikation Gewässerkunde. Die Abflussregimes der Schweiz.
- Babel, L., D. Vinck, and D. Karssenberg, 2019: Decision-making in model construction: Unveiling habits. *Environmental Modelling and Software*, **120 (May)**, 104 490, doi:10.1016/j.envsoft.2019.07.015.
- Barnett, T. P., J. C. Adam, and D. P. Lettenmaier, 2005: Potential impacts of a warming climate on water availability in snow-dominated regions. *Nature*, **438 (7066)**, 303–309, doi:10.1038/nature04141.
- Bartelt, P., and M. Lehning, 2002: A physical SNOWPACK model for the Swiss avalanche warning Part I: Numerical model. *Cold Regions Science and Technology*, **35 (3)**, 123–145, doi:10.1016/S0165-232X(02)00074-5.
- Battista, G., P. Molnar, and P. Burlando, 2020a: Modelling impacts of spatially variable erosion drivers on suspended sediment dynamics. *Earth Surface Dynamics*, **8 (3)**, 619–635, doi:10.5194/esurf-8-619-2020.
- Battista, G., F. Schlunegger, P. Burlando, and P. Molnar, 2020b: Modelling localized sources of sediment in mountain catchments for provenance studies. *Earth Surface Processes and Landforms*, **45 (14)**, 3475–3487, doi:10.1002/esp.4979.
- Beniston, M., and Coauthors, 2018: The European mountain cryosphere: A review of its current state, trends, and future challenges. *Cryosphere*, **12 (2)**, 759–794, doi:10.5194/tc-12-759-2018.
- Bergström, S., 1976: Development and application of a conceptual runoff model for Scandinavian catchments. Tech. rep., SMHI Report RHO 7, Norrköping.
- Bergström, S., 1992: The HBV model - its structure and applications. Tech. Rep. 4, 1–33 pp.
- Bergström, S., 1995: The HBV model. *Computer Models of Watershed Hydrology*, V. P. Singh, Ed., chap. 13.

- Beven, K., 2020a: The era of Infiltration. doi:10.5194/hess-2020-308.
- Beven, K., and N. Chappell, In rev.: Perceptual perplexity and parameter parsimony in hydrology. *WIREs Water*.
- Beven, K., and J. Freer, 2001: A dynamic TOPMODEL. *Hydrological Processes*, **15 (10)**, 1993–2011, doi:10.1002/hyp.252.
- Beven, K., and P. Young, 2013: A guide to good practice in modeling semantics for authors and referees. *Water Resources Research*, **49 (8)**, 5092–5098, doi:10.1002/wrcr.20393.
- Beven, K. J., 2000: Uniqueness of place and process representations in hydrological modelling. *Hydrology and Earth System Sciences*, **4 (2)**, 203–213, doi:10.5194/hess-4-203-2000.
- Beven, K. J., 2011: *Rainfall-runoff modelling: the primer*. John Wiley & Sons.
- Beven, K. J., 2020b: A history of the concept of time of concentration. *Hydrology and Earth System Sciences*, **24 (5)**, 2655–2670, doi:10.5194/hess-24-2655-2020.
- Beven, K. J., and M. J. Kirkby, 1979: A physically based variable contributing area model of basin hydrology / Un modèle à base physique de zone d'appel variable de l'hydrologie du bassin versant. *Hydrological Sciences Bulletin*, **24 (1)**, 43–69, doi:10.1080/02626667909491834.
- Bühlmann, A., and J. Schwanbeck, 2018: River basins. *Data and Analysis Platform*, Hydrological Atlas of Switzerland, URL [https://hydromaps.ch/#en/8/46.830/8.190/bl\\_hds--a03\\_a0301\\_flussv1\\_0\\$0/NULL](https://hydromaps.ch/#en/8/46.830/8.190/bl_hds--a03_a0301_flussv1_0$0/NULL).
- Bieger, K., J. G. Arnold, H. Rathjens, M. J. White, D. D. Bosch, P. M. Allen, M. Volk, and R. Srinivasan, 2017: Introduction to swat+, a completely restructured version of the soil and water assessment tool. *JAWRA Journal of the American Water Resources Association*, **53 (1)**, 115–130, doi:10.1111/1752-1688.12482.
- Bieri, M., and A. J. Schleiss, 2013: Analysis of flood-reduction capacity of hydropower schemes in an Alpine catchment area by semidistributed conceptual modelling. *Journal of Flood Risk Management*, **6 (3)**, 169–185, doi:10.1111/j.1753-318X.2012.01171.x.
- Bogner, K., K. Liechti, L. Bernhard, S. Monhart, and M. Zappa, 2018a: Skill of Hydrological Extended Range Forecasts for Water Resources Management in Switzerland. *Water Resources Management*, **32 (3)**, 969–984, doi:10.1007/s11269-017-1849-5.
- Bogner, K., K. Liechti, and M. Zappa, 2018b: Error Correcting and Combining Multi-model Flood Forecasting Systems. *Advances in Hydroinformatics*, Springer Singapore, 569–578, doi:10.1007/978-981-10-7218-5\_40.
- Bosshard, T., M. Carambia, K. Goergen, S. Kotlarski, P. Krahe, M. Zappa, and C. Schär, 2013: Quantifying uncertainty sources in an ensemble of hydrological climate-impact projections. *Water Resources Research*, **49 (3)**, 1523–1536, doi:10.1029/2011WR011533.
- Boughton, W., 2004: The Australian water balance model. *Environmental Modelling & Software*, **19 (10)**, 943–956, doi:10.1016/j.envsoft.2003.10.007.
- Brauchli, T., E. Trujillo, H. Huwald, and M. Lehning, 2017: Influence of Slope-Scale Snowmelt on Catchment Response Simulated With the Alpine3D Model. *Water Resources Research*, **53 (12)**, 10723–10739, doi:10.1002/2017WR021278.
- Braun, L., and H. Lang, 1986: Simulation of snowmelt runoff in lowland and lower Alpine regions of Switzerland. *Modelling Snowmelt-Induced Processes (Proceedings of the Budapest Symposium, July 1986)*. IAHS Publ. no. 155, IAHS.
- Braun, L. N., and M. Aellen, 1990: Modelling discharge of glacierized basins assisted by direct measurements of glacier mass balance. *Hydrology in Mountainous Regions. I – Hydrological Measurements*. IAHS Publ. No. 193, H. Lang, and A. Musy, Eds., IAHS, Wallingford, Oxfordshire UK, 99–106.
- Brunner, M. I., D. Farinotti, H. Zekollari, M. Huss, and M. Zappa, 2019a: Future shifts in extreme flow regimes in Alpine regions. *Hydrology and Earth System Sciences*, **23 (11)**, 4471–4489, doi:10.5194/hess-23-4471-2019.



- Brunner, M. I., R. Furrer, A. E. Sikorska, D. Viviroli, J. Seibert, and A. C. Favre, 2018a: Synthetic design hydrographs for ungauged catchments: a comparison of regionalization methods. *Stochastic Environmental Research and Risk Assessment*, **32 (7)**, 1993–2023.
- Brunner, M. I., K. Liechti, and M. Zappa, 2019b: Extremeness of recent drought events in Switzerland: dependence on variable and return period choice. *Natural Hazards and Earth System Sciences*, **19**, 2311–2323, doi:10.5194/nhess-19-2311-2019.
- Brunner, M. I., A. E. Sikorska, and J. Seibert, 2018b: Bivariate analysis of floods in climate impact assessments. *Science of The Total Environment*, **616-617**, 1392–1403, doi:10.1016/j.scitotenv.2017.10.176.
- Brunner, M. I., and A. E. Sikorska-Senoner, 2019: Dependence of flood peaks and volumes in modeled discharge time series: Effect of different uncertainty sources. *Journal of Hydrology*, **572**, 620–629, doi:10.1016/j.jhydrol.2019.03.024.
- Brunner, M. I., M. Zappa, and M. Stähli, 2019c: Scale matters: Effects of temporal and spatial data resolution on water scarcity assessments. *Advances in Water Resources*, **123**, 134–144, doi:10.1016/j.advwatres.2018.11.013.
- Bultot, F., D. Gellens, M. Spreafico, and B. Schadler, 1992: Repercussions of a CO2 doubling on the water balance - a case-study in Switzerland. *Journal of Hydrology*, **137 (1-4)**, 199–208.
- Burnash, R. J., R. L. Ferral, and R. A. McGuire, 1973: A generalized streamflow simulation system, conceptual modeling for digital computers. Tech. rep., Report by the Joint Federal State River Forecasts Center, Sacramento, California.
- Calanca, P., A. Roesch, K. Jasper, and M. Wild, 2006: Global warming and the summertime evapotranspiration regime of the Alpine region. *Climatic Change*, **79 (1-2)**, 65–78, doi:10.1007/s10584-006-9103-9.
- Carrier, C., S. B. Wirth, F. Cochand, D. Hunkeler, and P. Brunner, 2019: Exploring Geological and Topographical Controls on Low Flows with Hydrogeological Models. *Groundwater*, **57 (1)**, 48–62.
- Chamberlin, T. C., 1890: The method of multiple working hypotheses. *Science (old series)*, **15 (92)**.
- Ciarapica, L., and E. Todini, 2002: TOPKAPI: a model for the representation of the rainfall-runoff process at different scales. *Hydrological Processes*, **16 (2)**, 207–229, doi:10.1002/hyp.342.
- Clark, M. P., D. Kavetski, and F. Fenicia, 2011: Pursuing the method of multiple working hypotheses for hydrological modeling. *Water Resources Research*, **47 (9)**, 1–16, doi:10.1029/2010WR009827.
- Clark, M. P., A. G. Slater, D. E. Rupp, R. a. Woods, J. a. Vrugt, H. V. Gupta, T. Wagener, and L. E. Hay, 2008: Framework for Understanding Structural Errors (FUSE): A modular framework to diagnose differences between hydrological models. *Water Resources Research*, **44 (12)**, doi:10.1029/2007WR006735.
- Clark, M. P., and Coauthors, 2015: The structure for unifying multiple modeling alternatives (SUMMA), Technical Description, NCAR Technical Notes NCAR / TN 514+STR. Tech. rep., National Center for Atmospheric Research, Boulder, Colorado, 54 pp. pp. doi:10.5065/D6WQ01TD.
- Comola, F., B. Schaeffli, A. Rinaldo, and M. Lehning, 2015: Thermodynamics in the hydrologic response: Travel time formulation and application to Alpine catchments. *Water Resources Research*, **51 (3)**, 1671–1687, doi:10.1002/2014WR016228.
- Coxon, G., and Coauthors, 2019: DECIPHeR v1: Dynamic fluxEs and Connectivity for Predictions of Hydrology. *Geoscientific Model Development*, **12 (6)**, 2285–2306, doi:10.5194/gmd-12-2285-2019.
- Craig, J. R., and Coauthors, 2020: Flexible watershed simulation with the Raven hydrological modelling framework. *Environmental Modelling and Software*, **129 (April)**, doi:10.1016/j.envsoft.2020.104728.
- Cullmann, J., T. Krausse, and P. Saile, 2011: Parameterising hydrological models - Comparing optimisation and robust parameter estimation. *Journal of Hydrology*, **404 (3-4)**, 323–331, doi:10.1016/j.jhydrol.2011.05.003.
- Dal Molin, M., D. Kavetski, and F. Fenicia, 2020a: SuperflexPy 1.2.0 : an open source Python framework for building , testing and improving conceptual hydrological models. *Geoscientific Model Development Discussions*, doi:10.5194/gmd-2020-409.

- Dal Molin, M., M. Schirmer, M. Zappa, and F. Fenicia, 2020b: Understanding dominant controls on stream-flow spatial variability to set up a semi-distributed hydrological model: The case study of the Thur catchment. *Hydrology and Earth System Sciences*, **24** (3), 1319–1345, doi:10.5194/hess-24-1319-2020.
- David, C. H., J. S. Famiglietti, Z.-L. Yang, F. Habets, and D. R. Maidment, 2016: A decade of RAPID-Reflections on the development of an open source geoscience code. *Earth and Space Science*, **3** (5), 226–244, doi:10.1002/2015EA000142.
- de Boer-Euser, T., and Coauthors, 2017: Looking beyond general metrics for model comparison – lessons from an international model intercomparison study. *Hydrology and Earth System Sciences*, **21** (1), 423–440, doi:10.5194/hess-21-423-2017.
- Donnelly, C., J. C. Andersson, and B. Arheimer, 2015: Using flow signatures and catchment similarities to evaluate the E-HYPE multi-basin model across Europe. *Hydrological Sciences Journal*, **61** (2), 255–273, doi:10.1080/02626667.2015.1027710.
- Dubois, J., and J.-L. Boillat, 2000: Routing System. Modélisation du routage de crues dans des systèmes hydrauliques à surface libre. Tech. rep. doi:PNR61.
- Dwarakish, G., and B. Ganasri, 2015: Impact of land use change on hydrological systems: A review of current modeling approaches. *Cogent Geoscience*, **1** (1), 1115 691, doi:10.1080/23312041.2015.1115691, URL <http://dx.doi.org/10.1080/23312041.2015.1115691>.
- Edijatno, and C. Michel, 1989: Un modèle pluie-débit journalier à trois paramètres. *La Houille Blanche*, (2), 113–122, doi:10.1051/lhb/1989007.
- Endrizzi, S., S. Gruber, M. Dall'Amico, and R. Rigon, 2014: GEOtop 2.0: Simulating the combined energy and water balance at and below the land surface accounting for soil freezing, snow cover and terrain effects. *Geoscientific Model Development*, **7** (6), 2831–2857, doi:10.5194/gmd-7-2831-2014.
- Etter, S., N. Addor, M. Huss, and D. Finger, 2017: Climate change impacts on future snow, ice and rain runoff in a Swiss mountain catchment using multi-dataset calibration. *Journal of Hydrology: Regional Studies*, **13** (August), 222–239, doi:10.1016/j.ejrh.2017.08.005.
- Etter, S., B. Strobl, J. Seibert, and H. J. van Meerveld, 2020: Value of Crowd-Based Water Level Class Observations for Hydrological Model Calibration. *Water Resources Research*, **56** (2), 1–17, doi:10.1029/2019WR026108.
- Farinotti, D., S. Usselman, M. Huss, A. Bauder, and M. Funk, 2012: Runoff evolution in the Swiss Alps: Projections for selected high-alpine catchments based on ENSEMBLES scenarios. *Hydrological Processes*, **26** (13), 1909–1924, doi:10.1002/hyp.8276.
- Fatichi, S., V. Y. Ivanov, and E. Caporali, 2012a: A mechanistic ecohydrological model to investigate complex interactions in cold and warm water-controlled environments: 1. Theoretical framework and plot-scale analysis. *Journal of Advances in Modeling Earth Systems*, **4** (5), 1–31, doi:10.1029/2011MS000086.
- Fatichi, S., V. Y. Ivanov, and E. Caporali, 2012b: A mechanistic ecohydrological model to investigate complex interactions in cold and warm water-controlled environments: 2. Spatiotemporal analyses. *Journal of Advances in Modeling Earth Systems*, **4** (5), 1–22, doi:10.1029/2011MS000087.
- Fatichi, S., G. G. Katul, V. Y. Ivanov, C. Pappas, A. Paschalis, A. Consolo, J. Kim, and P. Burlando, 2015a: Abiotic and biotic controls of soil moisture spatiotemporal variability and the occurrence of hysteresis. *Water Resources Research*, **51** (5), 3505–3524, doi:10.1002/2014WR016102.
- Fatichi, S., C. Pappas, and V. Y. Ivanov, 2015b: Modeling plant–water interactions: an ecohydrological overview from the cell to the global scale. *WIREs Water*, **3** (3), 327–368, doi:10.1002/wat2.1125.
- Fatichi, S., S. Rimkus, P. Burlando, and R. Bordoy, 2014: Does internal climate variability overwhelm climate change signals in streamflow? The upper Po and Rhone basin case studies. *Science of the Total Environment*, **493**, 1171–1182, doi:10.1016/j.scitotenv.2013.12.014.
- Fatichi, S., S. Rimkus, P. Burlando, R. Bordoy, and P. Molnar, 2015c: High-resolution distributed analysis of climate and anthropogenic changes on the hydrology of an Alpine catchment. *Journal of Hydrology*, **525**, 362–382, doi:10.1016/j.jhydrol.2015.03.036.

- Felder, G., and R. Weingartner, 2017: Assessment of deterministic PMF modelling approaches. *Hydrological Sciences Journal*, **62 (10)**, 1591–1602, doi:10.1080/02626667.2017.1319065.
- Fenicia, F., D. Kavetski, and H. H. Savenije, 2011: Elements of a flexible approach for conceptual hydrological modeling: 1. Motivation and theoretical development. *Water Resources Research*, **47 (11)**, 1–13, doi: 10.1029/2010WR010174.
- Fenicia, F., D. Kavetski, H. H. G. Savenije, and L. Pfister, 2016: From spatially variable streamflow to distributed hydrological models: Analysis of key modeling decisions. *Water Resources Research*, **52 (2)**, 954–989, doi:10.1002/2015WR017398.
- Finger, D., G. Heinrich, A. Gobiet, and A. Bauder, 2012: Projections of future water resources and their uncertainty in a glacierized catchment in the Swiss Alps and the subsequent effects on hydropower production during the 21st century. *Water Resources Research*, **48 (2)**, doi:10.1029/2011wr010733.
- Finger, D., F. Pellicciotti, M. Konz, S. Rimkus, and P. Burlando, 2011: The value of glacier mass balance satellite snow cover images, and hourly discharge for improving the performance of a physically based distributed hydrological model. *Water Resources Research*, **47 (7)**, doi:10.1029/2010wr009824.
- Finger, D., M. Vis, M. Huss, and J. Seibert, 2015: The value of multiple data set calibration versus model complexity for improving the performance of hydrological models in mountain catchments. *Water Resources Research*, **51 (4)**, 1939–1958, doi:10.1002/2014WR015712.
- Finger, D., and Coauthors, 2013: Identification of glacial meltwater runoff in a karstic environment and its implication for present and future water availability. *Hydrology and Earth System Sciences*, **17 (8)**, 3261–3277, doi:10.5194/hess-17-3261-2013.
- Foehn, A., J. García Hernández, B. Roquier, J. Fluixá-Sanmartín, T. Brauchli, J. Paredes Arquiola, and G. De Cesare, 2020: *RS MINERVE – User manual v2.15*. CREALP, Switzerland.
- FOEN, 2021: Effects of climate change on Swiss water bodies. Hydrology, water ecology and water management. Tech. Rep. UW-2101-E, Federal Office for the Environment (FOEN), 134 pp.
- Foglia, L., M. C. Hill, S. W. Mehl, and P. Burlando, 2009: Sensitivity analysis, calibration, and testing of a distributed hydrological model using error-based weighting and one objective function. *Water Resources Research*, **45 (6)**, 1–18, doi:10.1029/2008WR007255.
- Follette, P. T. L., A. J. Teuling, N. Addor, M. Clark, K. Jansen, and L. A. Melsen, 2021: Numerical daemons of hydrological models are summoned by extreme precipitation. *Hydrology and Earth System Sciences*, **25 (10)**, 5425–5446, doi:10.5194/hess-25-5425-2021.
- Forster, F., 1989: Einfluss der Bewaldung auf die Komponenten der Wasserbilanz. *Informationsbericht 4/89 des Bayerischen Landes-amtes fur Wasserwirtschaft, München*, 47 – 63.
- Frey, M., C. Stamm, M. Schneider, and P. Reichert, 2011: Using discharge data to reduce structural deficits in a hydrological model with a Bayesian inference approach and the implications for the prediction of critical source areas. *Water Resources Research*, **47**, W12529, doi:10.1029/2010WR009993.
- Fuhrer, J., and K. Jasper, 2012: Demand and Supply of Water for Agriculture: Influence of Topography and Climate in Pre-Alpine, Mesoscale Catchments. *Natural Resources*, **03 (03)**, 145–155, doi:10.4236/nr.2012.33019.
- Fundel, F., S. Jörg-Hess, and M. Zappa, 2013: Monthly hydrometeorological ensemble prediction of streamflow droughts and corresponding drought indices. *Hydrology and Earth System Sciences*, **17 (1)**, 395–407, doi:10.5194/hess-17-395-2013.
- Fundel, F., and M. Zappa, 2011: Hydrological ensemble forecasting in mesoscale catchments: Sensitivity to initial conditions and value of reforecasts. *Water Resources Research*, **47 (9)**, 1–15, doi: 10.1029/2010WR009996.
- Futter, M. N., M. A. Erlandsson, D. Butterfield, P. G. Whitehead, S. K. Oni, and A. J. Wade, 2014: PERSiST: A flexible rainfall-runoff modelling toolkit for use with the INCA family of models. *Hydrology and Earth System Sciences*, **18 (2)**, 855–873, doi:10.5194/hess-18-855-2014.

- Gabbud, C., and S. N. Lane, 2016: Ecosystem impacts of Alpine water intakes for hydropower: the challenge of sediment management. *Wiley Interdisciplinary Reviews: Water*, **3 (1)**, 41–61, doi:10.1002/wat2.1124.
- Gallice, A., M. Bavy, T. Brauchli, F. Comola, M. Lehning, and H. Huwald, 2016: StreamFlow 1.0: an extension to the spatially distributed snow model Alpine3D for hydrological modelling and deterministic stream temperature prediction. *Geoscientific Model Development*, **9 (12)**, 4491–4519, doi:10.5194/gmd-9-4491-2016.
- García Hernández, J., J.-L. Boillat, F. Jordan, and B. Hingray, 2009a: La prévision hydrométéorologique sur le bassin versant du Rhône en amont du Léman. *La Houille Blanche*, **(5)**, 61–70, doi:10.1051/lhb/2009057.
- García Hernández, J., A. Foehn, J. Fluixá-Sanmartín, B. Roquier, T. Brauchli, J. Paredes Arquiola, and G. De Cesare, 2020: *RS MINERVE – Technical manual v2.25*. CREALP, Switzerland.
- García Hernández, J., P. Horton, C. Tobin, and J. Boillat, 2009b: MINERVE 2010: Prévision hydrométéorologique et gestion des crues sur le Rhône alpin. *Wasser Energie Luft – Eau Energie Air*, **4**, 297–302.
- Gassmann, M., C. Stamm, O. Olsson, J. Lange, K. Kümmerer, and M. Weiler, 2013: Model-based estimation of pesticides and transformation products and their export pathways in a headwater catchment. *Hydrology and Earth System Sciences*, **17 (12)**, 5213–5228, doi:10.5194/hess-17-5213-2013.
- Girons Lopez, M., and J. Seibert, 2016: Influence of hydro-meteorological data spatial aggregation on stream-flow modelling. *Journal of Hydrology*, **541**, 1212–1220, doi:10.1016/j.jhydrol.2016.08.026.
- Girons Lopez, M., M. J. P. Vis, M. Jenicek, N. Griessinger, and J. Seibert, 2020: Assessing the degree of detail of temperature-based snow routines for runoff modelling in mountainous areas in central Europe. *Hydrology and Earth System Sciences*, **9 (24)**, 4441–4461, doi:10.5194/hess-24-4441-2020.
- Griessinger, N., J. Seibert, J. Magnusson, and T. Jonas, 2016: Assessing the benefit of snow data assimilation for runoff modeling in Alpine catchments. *Hydrology and Earth System Sciences*, **20 (9)**, 3895–3905, doi:10.5194/hess-20-3895-2016.
- Guo, Y., Y. Zhang, L. Zhang, and Z. Wang, 2021: Regionalization of hydrological modeling for predicting streamflow in ungauged catchments: A comprehensive review. *Wiley Interdisciplinary Reviews: Water*, **8 (1)**, 1–32, doi:10.1002/wat2.1487.
- Gupta, H. V., C. Perrin, G. Blöschl, A. Montanari, R. Kumar, M. Clark, and V. Andréassian, 2014: Large-sample hydrology: a need to balance depth with breadth. *Hydrology and Earth System Sciences*, **18 (2)**, 463–477, doi:10.5194/hess-18-463-2014.
- Gurtz, J., A. Baltensweiler, and H. Lang, 1999: Spatially distributed hydrotope-based modelling of evapotranspiration and runoff in mountainous basins. *Hydrological Processes*, **13 (17)**, 2751–2768, doi:10.1002/(SICI)1099-1085(19991215)13:17<2751::AID-HYP897>3.0.CO;2-O.
- Gurtz, J., M. Zappa, K. Jasper, H. Lang, M. Verbunt, A. Badoux, and T. Vitvar, 2003: A comparative study in modelling runoff and its components in two mountainous catchments. *Hydrological Processes*, **17 (2)**, 297–311, doi:10.1002/hyp.1125.
- Hakala, K., N. Addor, T. Gobbe, J. Ruffieux, and J. Seibert, 2020: Risks and opportunities for a Swiss hydroelectricity company in a changing climate. *Hydrology and Earth System Sciences*, **24 (7)**, 3815–3833, doi:10.5194/hess-24-3815-2020.
- Hamalainen, R. P., 2015: Behavioural issues in environmental modelling - The missing perspective. *Environmental Modelling and Software*, **73**, 244–253, doi:10.1016/j.envsoft.2015.08.019.
- Hamdi, Y., B. Hingray, and A. Musy, 2005: Un modèle de prévision hydro-météorologique pour les crues du Rhône supérieur en Suisse. *Wasser Energie Luft*, **97**.
- Hegg, C., B. W. McArdell, and A. Badoux, 2006: One hundred years of mountain hydrology in Switzerland by the WSL. *Hydrological Processes*, **20 (2)**, 371–376, doi:10.1002/hyp.6055.
- Hingray, B., B. Schaeffli, A. Mezghani, and Y. Hamdi, 2010: Signature-based model calibration for hydrological prediction in mesoscale Alpine catchments. *Hydrological Sciences Journal*, **55 (6)**, 1002–1016, doi:10.1080/02626667.2010.505572.

- Hoeck, E., 1952: Der einfluss der strahlung und der temperatur auf den schmelzprozess der schneedecke. *Beitrage zur Geologie der Schweiz, Geotechnische Serie, Hydrologie, Lieferung 8.*, Kummerly und Frey AG, Bern, 36.
- Horton, P., B. Schaeffli, A. Mezghani, B. Hingray, and A. Musy, 2006: Assessment of climate-change impacts on alpine discharge regimes with climate model uncertainty. *Hydrological Processes*, **20 (10)**, 2091–2109, doi:10.1002/hyp.6197.
- Hostache, R., and Coauthors, 2020: Assimilation of Soil Moisture and Ocean Salinity (SMOS) brightness temperature into a large-scale distributed conceptual hydrological model to improve soil moisture predictions: The Murray–Darling basin in Australia as a test case. *Hydrology and Earth System Sciences*, **24 (10)**, 4793–4812, doi:10.5194/hess-24-4793-2020.
- Hottelet, C., L. Braun, C. Leibundgut, and A. Rieg, 1993: Simulation of snowpack and discharge in an alpine karst basin. *Snow and Glacier Hydrologie, Proceedings of the Kathmandu Symposium, Nov. 1992, IAHS Publ. no 218*.
- Huss, M., D. Farinotti, A. Bauder, and M. Funk, 2008: Modelling runoff from highly glacierized alpine drainage basins in a changing climate. *Hydrological Processes*, **22**, 3888–3902, doi:10.1002/hyp.7055, URL <http://jamsb.austms.org.au/courses/CSC2408/semester3/resources/ldp/abs-guide.pdf>.
- Huss, M., G. Juvet, D. Farinotti, and A. Bauder, 2010: Future high-mountain hydrology: A new parameterization of glacier retreat. *Hydrology and Earth System Sciences*, **14 (5)**, 815–829, doi:10.5194/hess-14-815-2010.
- Huss, M., and Coauthors, 2017: Toward mountains without permanent snow and ice. *Earth's Future*, **5 (5)**, 418–435, doi:10.1002/2016EF000514.
- Iorgulescu, I., and J. P. Jordan, 1994: Validation of TOPMODEL on a small Swiss catchment. *Journal of Hydrology*, **159 (1–4)**, 255–273.
- Jasper, K., P. Calanca, and J. Fuhrer, 2006: Changes in summertime soil water patterns in complex terrain due to climatic change. *Journal of Hydrology*, **327 (3–4)**, 550–563, doi:10.1016/j.jhydrol.2005.11.061.
- Jasper, K., P. Calanca, D. Gyalistras, and J. Fuhrer, 2004: Differential impacts of climate change on the hydrology of two alpine river basins. *Climate Research*, **26**, 113–129.
- Jasper, K., and M. Ebel, 2016: Advanced Flood Forecasting for Switzerland. *13th International INTER-PRAEVENT Congress, Emergency Management (Emergency Planning, Early Warning, Intervention, Recovery)*, Lucerne, Switzerland, 917–926.
- Jasper, K., J. Gurtz, and H. Lang, 2002: Advanced flood forecasting in Alpine watersheds by coupling meteorological observations and forecasts with a distributed hydrological model. *Journal of Hydrology*, **267 (1–2)**, 40–52, doi:10.1016/S0022-1694(02)00138-5.
- Jasper, K., and P. Kaufmann, 2003: Coupled runoff simulations as validation tools for atmospheric models at the regional scale. *Quarterly Journal of the Royal Meteorological Society*, **129 (588 PART B)**, 673–692, doi:10.1256/qj.02.26.
- Jaun, S., and B. Ahrens, 2009: Evaluation of a probabilistic hydrometeorological forecast system. *Hydrology and Earth System Sciences*, **13 (7)**, 1031–1043, doi:10.5194/hess-13-1031-2009.
- Jaun, S., B. Ahrens, A. Walser, T. Ewen, and C. Schär, 2008: A probabilistic view on the August 2005 floods in the upper Rhine catchment. *Natural Hazards and Earth System Sciences*, **8 (2)**, 281–291, doi:10.5194/nhess-8-281-2008.
- Jenicek, M., J. Seibert, and M. Staudinger, 2018: Modeling of Future Changes in Seasonal Snowpack and Impacts on Summer Low Flows in Alpine Catchments. *Water Resources Research*, **54 (1)**, 538–556, doi:10.1002/2017WR021648.
- Jensen, H., and H. Lang, 1973: Forecasting discharge from a glaciated basin in the Swiss Alps. *Role of Snow and Ice in Hydrology, Proceedings of symposia held at Banff, September 1972, IAHS Publ. no 107, 2*, 1047–1057.

- Jordan, F., J.-L. Boillat, and A. Schleiss, 2010: Pr evision et gestion des crues du Rh one sup erieur par l'exploitation optimale des retenues alpines. *La Houille Blanche*, **(5)**, 91–102, doi:10.1051/lhb/2010060.
- Jordan, J. P., V. Laglaine, and P. Hohl, 1990: A comparative assessment of two approaches to evaluate anthropogenic effects on flood events in mountainous regions. *Hydrology in Mountainous Regions. I - Hydrological Measurements; the Water Cycle (Proceedings of two Lausanne Symposia, August 1990)*. IAHS Publ. no. 193, 565–572.
- J org-Hess, S., S. B. Kempf, F. Fundel, and M. Zappa, 2015: The benefit of climatological and calibrated reforecast data for simulating hydrological droughts in Switzerland. *Meteorological Applications*, **22 (3)**, 444–458, doi:10.1002/met.1474.
- J org-Hess, S., N. Griessinger, and M. Zappa, 2015: Probabilistic Forecasts of Snow Water Equivalent and Runoff in Mountainous Areas. *Journal of Hydrometeorology*, **16 (5)**, 2169–2186, doi:10.1175/jhm-d-14-0193.1.
- Junghans, N., J. Cullmann, and M. Huss, 2011: Evaluating the effect of snow and ice melt in an Alpine headwater catchment and further downstream in the River Rhine. *Hydrological Sciences Journal*, **56 (6)**, 981–993, doi:10.1080/02626667.2011.595372.
- Junker, J., F. U. M. Heimann, C. Hauer, J. M. Turowski, D. Rickenmann, M. Zappa, and A. Peter, 2015: Assessing the impact of climate change on brown trout (*Salmo trutta fario*) recruitment. *Hydrobiologia*, **751 (1)**, 1–21, doi:10.1007/s10750-014-2073-4.
- Kauffeldt, A., F. Wetterhall, F. Pappenberger, P. Salamon, and J. Thielen, 2016: Technical review of large-scale hydrological models for implementation in operational flood forecasting schemes on continental level. *Environmental Modelling & Software*, **75**, 68–76, doi:10.1016/j.envsoft.2015.09.009.
- Kavetski, D., and F. Fenicia, 2011: Elements of a flexible approach for conceptual hydrological modeling: 2. Application and experimental insights. *Water Resources Research*, **47 (11)**, 1–19, doi:10.1029/2011WR010748.
- Keller, H. M., and F. Forster, 1991: *Simulating soil moisture and runoff components to estimate variability of streamflow chemistry*, 143–151.
- Keller, L., A. P. Zischg, M. Mosimann, O. R ossler, R. Weingartner, and O. Martius, 2019: Large ensemble flood loss modelling and uncertainty assessment for future climate conditions for a Swiss pre-alpine catchment. *Science of the Total Environment*, **693**, doi:10.1016/j.scitotenv.2019.07.206.
- Kleinn, J., C. Frei, J. Gurtz, P. L. Vidale, and C. Sch ar, 2005: Hydrologic simulations in the Rhine basin driven by a regional climate model. *Journal of Geophysical Research*, **110 (D4)**, doi:10.1029/2004jd005143.
- Kneis, D., 2015: A lightweight framework for rapid development of object-based hydrological model engines. *Environmental Modelling and Software*, **68**, 110–121, doi:10.1016/j.envsoft.2015.02.009.
- Knijff, J. M. V. D., J. Younis, and A. P. J. D. Roo, 2010: LISFLOOD: a GIS-based distributed model for river basin scale water balance and flood simulation. *International Journal of Geographical Information Science*, **24 (2)**, 189–212, doi:10.1080/13658810802549154.
- Knoben, W. J. M., J. E. Freer, K. J. A. Fowler, M. C. Peel, and R. A. Woods, 2019: Modular Assessment of Rainfall-Runoff Models Toolbox (MARRMoT) v1.0: an open- source, extendable framework providing implementations of 46 conceptual hydrologic models as continuous space-state formulations. *Geoscientific Model Development Discussions*, 1–26, doi:10.5194/gmd-2018-332.
- Kobierska, F., T. Jonas, J. Magnusson, M. Zappa, M. Bavay, T. Bosshard, F. Paul, and S. M. Bernasconi, 2011: Climate change effects on snow melt and discharge of a partly glacierized watershed in Central Switzerland (SoilTrec Critical Zone Observatory). *Applied Geochemistry*, **26**, S60–S62, doi:10.1016/j.apgeochem.2011.03.029.
- Kobierska, F., T. Jonas, M. Zappa, M. Bavay, J. Magnusson, and S. M. Bernasconi, 2013: Future runoff from a partly glacierized watershed in Central Switzerland: A two-model approach. *Advances in Water Resources*, **55**, 204–214, doi:10.1016/j.advwatres.2012.07.024.

- Konz, M., M. Chiari, S. Rimkus, J. M. Turowski, P. Molnar, D. Rickenmann, and P. Burlando, 2011: Sediment transport modelling in a distributed physically based hydrological catchment model. *Hydrology and Earth System Sciences*, **15** (9), 2821–2837, doi:10.5194/hess-15-2821-2011.
- Köplin, N., B. Schädler, D. Viviroli, and R. Weingartner, 2012: Relating climate change signals and physiographic catchment properties to clustered hydrological response types. *Hydrology and Earth System Sciences*, **16** (7), 2267–2283, doi:10.5194/hess-16-2267-2012.
- Köplin, N., B. Schädler, D. Viviroli, and R. Weingartner, 2013: The importance of glacier and forest change in hydrological climate-impact studies. *Hydrology and Earth System Sciences*, **17** (2), 619–635, doi:10.5194/hess-17-619-2013.
- Köplin, N., D. Viviroli, B. Schädler, and R. Weingartner, 2010: How does climate change affect mesoscale catchments in Switzerland? – a framework for a comprehensive assessment. *Advances in Geosciences*, **27**, 111–119, doi:10.5194/adgeo-27-111-2010.
- Kumar, R., L. Samaniego, and S. Attinger, 2013: Implications of distributed hydrologic model parameterization on water fluxes at multiple scales and locations. *Water Resources Research*, **49** (1), 360–379, doi:10.1029/2012wr012195.
- Lane, R. A., and Coauthors, 2019: Benchmarking the predictive capability of hydrological models for river flow and flood peak predictions across a large-sample of catchments in Great Britain. *Hydrology and Earth System Sciences*, **23** (10), 4011–4032, doi:10.5194/hess-23-4011-2019.
- Lehning, M., P. Bartelt, B. Brown, and C. Fierz, 2002a: A physical SNOWPACK model for the Swiss avalanche warning Part III: Meteorological forcing, thin layer formation and evaluation. *Cold Regions Science and Technology*, **35** (3), 169–184, doi:10.1016/S0165-232X(02)00072-1.
- Lehning, M., P. Bartelt, B. Brown, C. Fierz, and P. Satyawali, 2002b: A physical SNOWPACK model for the Swiss avalanche warning Part II. Snow microstructure. *Cold Regions Science and Technology*, **35** (3), 147–167, doi:10.1016/S0165-232X(02)00073-3, URL [papers2://publication/uuid/A55AB87D-E628-4EF3-90EA-E523090892DE](https://papers2://publication/uuid/A55AB87D-E628-4EF3-90EA-E523090892DE).
- Lehning, M., I. Völsch, D. Gustafsson, T. A. Nguyen, M. Stähli, and M. Zappa, 2006: ALPINE3D: a detailed model of mountain surface processes and its application to snow hydrology. *Hydrological Processes*, **20** (10), 2111–2128, doi:10.1002/hyp.6204.
- Liang, X., D. P. Lettenmaier, E. F. Wood, and S. J. Burges, 1994: A simple hydrologically based model of land surface water and energy fluxes for general circulation models. *Journal of Geophysical Research*, **99** (D7).
- Liechti, K., M. Zappa, F. Fundel, and U. Germann, 2013: Probabilistic evaluation of ensemble discharge nowcasts in two nested Alpine basins prone to flash floods. *Hydrological Processes*, **27** (1), 5–17, doi:10.1002/hyp.9458.
- Lindström, G., B. Johansson, M. Persson, M. Gardelin, and S. Bergström, 1997: Development and test of the distributed HBV-96 hydrological model. *Journal of Hydrology*, **201** (1-4), 272–288, doi:10.1016/s0022-1694(97)00041-3.
- Lindström, G., C. Pers, J. Rosberg, J. Strömqvist, and B. Arheimer, 2010: Development and testing of the HYPE (Hydrological Predictions for the Environment) water quality model for different spatial scales. *Hydrology Research*, **41** (3-4), 295–319, doi:10.2166/nh.2010.007.
- Liu, Z., and E. Todini, 2002: Towards a comprehensive physically-based rainfall-runoff model. *Hydrology and Earth System Sciences*, **6** (5), 859–881, doi:10.5194/hess-6-859-2002.
- Ludwig, K., and M. Bremicker, 2006: The Water Balance Model LARSIM: Design, Content and Applications. Tech. rep., Freiburger Schriften zur Hydrologie 22, Institut für Hydrologie der Universität Freiburg, Freiburg, 130 p. pp.
- Lugiez, G., P. Kasser, H. Jensen, and P. Guillot, 1969: La prevision des debits du Rhin - un exemple de collaboration internationale en hydrologie; forecast of the discharge for river Rhine - an example of international cooperation in hydrology. *La Houille Blanche*, **7**, 733–746, doi:10.1051/lhb/1969058.

- Martinec, J., 1970: Study of snowmelt runoff process in two representative watersheds with different elevation range. *Symposium on the Results of Research in Representative and Experimental Basins (Wellington, 1970)*, IAHS Publ. no. 96., IAHS, 29–39.
- Martinec, J., 1975: Snowmelt-runoff model for streamflow forecasts. *Nordic Hydrology*, **6 (3)**, 145–154.
- Mastrotheodoros, T., C. Pappas, P. Molnar, P. Burlando, P. Hadjidoukas, and S. Fatichi, 2019: Ecohydrological dynamics in the Alps: Insights from a modelling analysis of the spatial variability. *Ecohydrology*, **12 (1)**, 1–18, doi:10.1002/eco.2054.
- McMillan, H., D. Booker, and C. Cattoën, 2016: Validation of a national hydrological model. *Journal of Hydrology*, **541**, 800–815, doi:10.1016/j.jhydrol.2016.07.043.
- Melsen, L. A., and B. Guse, 2021: Climate change impacts model parameter sensitivity – implications for calibration strategy and model diagnostic evaluation. *Hydrology and Earth System Sciences*, **25 (3)**, 1307–1332, doi:10.5194/hess-25-1307-2021.
- Michel, A., T. Brauchli, M. Lehning, B. Schaepli, and H. Huwald, 2020: Stream temperature and discharge evolution in Switzerland over the last 50 years: annual and seasonal behaviour. *Hydrology and Earth System Sciences*, **24 (1)**, 115–142.
- Michel, A., B. Schaepli, N. Wever, H. Zekollari, M. Lehning, and H. Huwald, 2021: Future water temperature of rivers in Switzerland under climate change investigated with physics-based models. *Hydrology and Earth System Sciences Discussions*, **20 (April)**, doi:10.5194/hess-2021-194.
- Middelkoop, H., and Coauthors, 2001: Impact of climate change on hydrological regimes and water resources management in the Rhine basin. *Climatic Change*, **49 (1-2)**, 105–128, doi:10.1023/A:1010784727448.
- Milano, M., E. Reynard, N. Bosshard, and R. Weingartner, 2015a: Simulating future trends in hydrological regimes in Western Switzerland. *Journal of Hydrology: Regional Studies*, **4**, 748–761, doi:10.1016/j.ejrh.2015.10.010.
- Milano, M., E. Reynard, N. Bosshard, and R. Weingartner, 2016: In light of seasonal climatic and anthropogenic changes, is the Vaud canton (Switzerland) vulnerable to water stress by the medium-term? *La Houille Blanche*, **102 (5)**, 17–24, doi:10.1051/lhb/2016045, URL <https://www.tandfonline.com/doi/full/10.1051/lhb/2016045>.
- Milano, M., E. Reynard, N. Köplin, and R. Weingartner, 2015b: Climatic and anthropogenic changes in Western Switzerland: Impacts on water stress. *Science of the Total Environment*, **536**, 12–24, doi:10.1016/j.scitotenv.2015.07.049.
- Monhart, S., M. Zappa, C. Spirig, C. Schär, and K. Bogner, 2019: Subseasonal hydrometeorological ensemble predictions in small- and medium-sized mountainous catchments: benefits of the NWP approach. *Hydrology and Earth System Sciences*, **23 (1)**, 493–513, doi:10.5194/hess-23-493-2019.
- Müller-Thomy, H., and A. E. Sikorska-Senoner, 2019: Does the complexity in temporal precipitation disaggregation matter for a lumped hydrological model? *Hydrological Sciences Journal*, **64 (12)**, 1453–1471, doi:10.1080/02626667.2019.1638926.
- Murphy, J. T., M. Altaweel, J. Ozik, and R. B. Lammers, 2019: Understanding institutions for water allocation and exchange: Insights from dynamic agent-based modeling. *Wiley Interdisciplinary Reviews: Water*, **6 (6)**, doi:10.1002/wat2.1384.
- Naef, F., 1977: Ein Vergleich von mathematischen Niederschlag-Abfluss-Modellen. Ph.D. thesis, ETH Zürich, versuchsanstalt für Wasserbau, Hydrologie und Glaziologie; der ETHZ; Mitteilung Nr.26. Diss. Techn.Wiss. ETH Zürich, Nr. 6044, 0000. Ref.: Vischer, D. ; Korref.: Dracos, T..
- Naef, F., 1981: Can we model the rainfall-runoff process today? *Hydrological Sciences - Bulletin*, **26**, 9/281–289.
- Newman, A. J., N. Mizukami, M. P. Clark, A. W. Wood, B. Nijssen, , and G. Nearing, 2017: Benchmarking of a Physically Based Hydrologic Model. *Journal of Hydrometeorology*, **18 (8)**, 2215–2225, doi:10.1175/JHM-D-16-0284.1.



- Orth, R., M. Staudinger, S. I. Seneviratne, J. Seibert, and M. Zappa, 2015: Does model performance improve with complexity? A case study with three hydrological models. *Journal of Hydrology*, **523**, 147–159, doi:10.1016/j.jhydrol.2015.01.044.
- Pappas, C., S. Fatichi, S. Rimkus, P. Burlando, and M. O. Huber, 2015: The role of local-scale heterogeneities in terrestrial ecosystem modeling. *Journal of Geophysical Research: Biogeosciences*, **120 (2)**, 341–360, doi:10.1002/2014jg002735.
- Paschalis, A., S. Fatichi, P. Molnar, S. Rimkus, and P. Burlando, 2014: On the effects of small scale space–time variability of rainfall on basin flood response. *Journal of Hydrology*, **514**, 313–327, doi:10.1016/j.jhydrol.2014.04.014.
- Peel, M. C., and T. A. McMahon, 2020: Historical development of rainfall-runoff modeling. *WIREs Water*, **7 (5)**, doi:10.1002/wat2.1471.
- Peleg, N., F. Blumensaat, P. Molnar, S. Fatichi, and P. Burlando, 2017: Partitioning the impacts of spatial and climatological rainfall variability in urban drainage modeling. *Hydrology and Earth System Sciences*, **21 (3)**, 1559–1572, doi:10.5194/hess-21-1559-2017.
- Pontille, D., 2007: Matérialité des écrits scientifiques et travail de frontières : le cas du format IMRAD. *Sciences et frontières*, 229–253.
- Pushpalatha, R., C. Perrin, N. Le Moine, T. Mathevet, and V. Andréassian, 2011: A downward structural sensitivity analysis of hydrological models to improve low-flow simulation. *Journal of Hydrology*, **411 (1-2)**, 66–76, doi:10.1016/j.jhydrol.2011.09.034.
- Ragetli, S., and F. Pellicciotti, 2012: Calibration of a physically based spatially distributed hydrological model in a glacierized basin: On the use of knowledge from glaciometeorological processes to constrain model parameters. *Water Resources Research*, **48 (3)**, doi:10.1029/2011wr010559.
- Rahman, K., C. Etienne, A. Gago-Silva, C. Maringanti, M. Beniston, and A. Lehmann, 2014: Streamflow response to regional climate model output in the mountainous watershed: a case study from the Swiss Alps. *Environmental Earth Sciences*, **72 (11)**, 4357–4369, doi:10.1007/s12665-014-3336-0.
- Raymond Pralong, M., J. M. Turowski, D. Rickenmann, and M. Zappa, 2015: Climate change impacts on bedload transport in alpine drainage basins with hydropower exploitation. *Earth Surface Processes and Landforms*, **40 (12)**, 1587–1599, doi:10.1002/esp.3737.
- Richards, L. A., 1931: Capillary conduction of liquids through porous mediums. *Journal of Applied Physics*, **1 (5)**, 318–333, doi:10.1063/1.1745010.
- Rickenmann, D., J. M. Turowski, B. Fritschi, A. Klaiiber, and A. Ludwig, 2012: Bedload transport measurements at the Erlenbach stream with geophones and automated basket samplers. *Earth Surface Processes and Landforms*, **37 (9)**, 1000–1011, doi:10.1002/esp.3225.
- Rinck, F., 2010: L'analyse linguistique des enjeux de connaissance dans le discours scientifique. *Revue d'anthropologie des connaissances*, **Vol 4, 3 (3)**, 427, doi:10.3917/rac.011.0427.
- Rosbjerg, D., and H. Madsen, 2005: Concepts of Hydrologic Modeling. *Encyclopedia of Hydrological Sciences*, chap. 10, 1–9, doi:10.1002/0470848944.hsa009.
- Rössler, O., and S. Brönnimann, 2018: The effect of the Tambora eruption on Swiss flood generation in 1816/1817. *Science of the Total Environment*, **627**, 1218–1227, doi:10.1016/j.scitotenv.2018.01.254.
- Rössler, O., B. Diekkrüger, and J. Löffler, 2012: Potential drought stress in a Swiss mountain catchment - Ensemble forecasting of high mountain soil moisture reveals a drastic decrease, despite major uncertainties. *Water Resources Research*, **48 (4)**, 1–19, doi:10.1029/2011WR011188.
- Rössler, O., P. Froidevaux, U. Börst, R. Rickli, O. Martius, and R. Weingartner, 2014: Retrospective analysis of a nonforecasted rain-on-snow flood in the Alps—A matter of model limitations or unpredictable nature? *Hydrology and Earth System Sciences*, **18 (6)**, 2265–2285, doi:10.5194/hess-18-2265-2014.
- Rössler, O., S. Kotlarski, A. M. Fischer, D. Keller, M. Liniger, and R. Weingartner, 2019: Evaluating the added value of the new Swiss climate scenarios for hydrology: An example from the Thur catchment. *Climate Services*, **13 (January)**, 1–13, doi:10.1016/j.cliser.2019.01.001.

- Rössler, O., and J. Löffler, 2010: Potentials and limitations of modelling spatio-temporal patterns of soil moisture in a high mountain catchment using WaSiM-ETH. *Hydrological Processes*, **24 (15)**, 2182–2196, doi:10.1002/hyp.7663.
- Samaniego, L., R. Kumar, and S. Attinger, 2010: Multiscale parameter regionalization of a grid-based hydrologic model at the mesoscale. *Water Resources Research*, **46 (5)**, 1–25, doi:10.1029/2008WR007327.
- Schaefli, B., B. Hingray, and A. Musy, 2007a: Climate change and hydropower production in the Swiss Alps: quantification of potential impacts and related modelling uncertainties. *Hydrology and Earth System Sciences*, **11 (3)**, 1191–1205, doi:10.5194/hess-11-1191-2007.
- Schaefli, B., B. Hingray, M. Niggli, and A. Musy, 2005: A conceptual glacio-hydrological model for high mountainous catchments. *Hydrology and Earth System Sciences Discussions*, **9 (1)**, 95–109, doi:10.5194/hessd-2-73-2005.
- Schaefli, B., and M. Huss, 2011: Integrating point glacier mass balance observations into hydrologic model identification. *Hydrology and Earth System Sciences*, **15**, 1227–1241.
- Schaefli, B., P. Manso, M. Fischer, M. Huss, and D. Farinotti, 2019: The role of glacier retreat for Swiss hydropower production. *Renewable Energy*, **132**, 615–627, doi:10.1016/j.renene.2018.07.104.
- Schaefli, B., L. Nicótina, C. Imfeld, P. Da Ronco, E. Bertuzzo, and A. Rinaldo, 2014: SEHR-ECHO v1.0: A spatially explicit hydrologic response model for ecohydrologic applications. *Geoscientific Model Development*, **7 (6)**, 2733–2746, doi:10.5194/gmd-7-2733-2014.
- Schaefli, B., D. B. Talamba, and A. Musy, 2007b: Quantifying hydrological modeling errors through a mixture of normal distributions. *Journal of Hydrology*, **332 (3-4)**, 303–315, doi:10.1016/j.jhydrol.2006.07.005.
- Schattan, P., M. Zappa, H. Lischke, L. Bernhard, E. Thürig, and B. Diekkrüger, 2013: An approach for transient consideration of forest change in hydrological impact studies. *IAHS-AISH Proceedings and Reports*, Vol. 359, 311–319.
- Schirmer, M., S. Leschik, and A. Musolff, 2013: Current research in urban hydrogeology – A review. *Advances in Water Resources*, **51**, 280–291.
- Schneider, F., and C. Homewood, 2013: Exploring water governance arrangements in the Swiss Alps from the perspective of adaptive capacity. *Mountain Research and Development*, **33 (3)**, 225–233, doi:10.1659/MRD-JOURNAL-D-13-00004.1.
- Schulla, J., 2009: Model Description WaSiM (Water balance Simulation Model). Tech. rep., Hydrology Software Consulting J. Schulla, 376 p. pp.
- Schulla, J., and K. Jasper, 2007: Model description WaSiM-ETH (Water balance Simulation Model ETH). Tech. rep., 181p. pp. URL [http://www.wasim.ch/downloads/doku/wasim/{\\_}2007{\\_}en.pdf](http://www.wasim.ch/downloads/doku/wasim/{_}2007{_}en.pdf).
- Seibert, J., M. Vis, I. Kohn, M. Weiler, and K. Stahl, 2018a: Technical note: Representing glacier geometry changes in a semi-distributed hydrological model. *Hydrology and Earth System Sciences*, **22 (4)**, 2211–2224, doi:10.5194/hess-22-2211-2018.
- Seibert, J., and M. J. P. Vis, 2012: Teaching hydrological modeling with a user-friendly catchment-runoff-model software package. *Hydrology and Earth System Sciences*, **16 (9)**, 3315–3325, doi:10.5194/hess-16-3315-2012.
- Seibert, J., M. J. P. Vis, E. Lewis, and H. van Meerveld, 2018b: Upper and lower benchmarks in hydrological modelling. *Hydrological Processes*, **32 (8)**, 1120–1125, doi:10.1002/hyp.11476.
- Shakoor, A., A. Burri, M. Bavay, N. Ejaz, A. R. Ghumman, F. Comola, and M. Lehning, 2018: Hydrological response of two high altitude Swiss catchments to energy balance and temperature index melt schemes. *Polar Science*, **17 (June)**, 1–12, doi:10.1016/j.polar.2018.06.007.
- Sikorska, A., D. Viviroli, and J. Seibert, 2017: Effective precipitation duration for runoff peaks based on catchment modelling. *Journal of Hydrology*, **556**, 510–522, doi:10.1016/j.jhydrol.2017.11.028.
- Sikorska, A. E., and J. Seibert, 2016: Value of different precipitation data for flood prediction in an alpine catchment: A Bayesian approach. *Journal of Hydrology*, **556**, 961–971, doi:10.1016/j.jhydrol.2016.06.031.

- Sikorska, A. E., and J. Seibert, 2018: Appropriate temporal resolution of precipitation data for discharge modelling in pre-alpine catchments. *Hydrological Sciences Journal*, **63 (1)**, 1–16, doi:10.1080/02626667.2017.1410279.
- Sikorska-Senoner, A., B. Schaefli, and J. Seibert, 2020: Downsizing parameter ensembles for simulations of extreme floods. *Natural Hazards and Earth System Sciences*, **(March)**, 1–38, doi:10.5194/nhess-2020-79.
- SNFS, 2021: NRP 31 Climatic Changes and Natural Hazards. URL <http://www.snf.ch/en/researchinFocus/nrp/nrp31-climatic-changes-and-natural-hazards/Pages/default.aspx> lastaccessed={26.01.2021}.
- Solomatine, D., and T. Wagener, 2011: Hydrological Modeling. *Treatise on Water Science*, Elsevier, 435–457, doi:10.1016/b978-0-444-53199-5.00044-0.
- Speich, M. J., L. Bernhard, A. J. Teuling, and M. Zappa, 2015: Application of bivariate mapping for hydrological classification and analysis of temporal change and scale effects in Switzerland. *Journal of Hydrology*, **523**, 804–821, doi:10.1016/j.jhydrol.2015.01.086.
- Speich, M. J. R., M. Zappa, M. Scherstjanoi, and H. Lischke, 2020: Forests and hydrology under climate change in switzerland v1.0: a spatially distributed model combining hydrology and forest dynamics. *Geoscientific Model Development*, **13 (2)**, 537–564, doi:10.5194/gmd-13-537-2020.
- Stahl, K., M. Weiler, D. Freudiger, I. Kohn, M. Seibert, Jan and Vis, K. Gerlinger, and M. Böhm, 2017: *The snow and glacier melt components of the streamflow of the River Rhine and its tributaries considering the influence of climate change*. Final report to the International Commission for the Hydrology of the Rhine basin (CHR), URL <https://www.chrchr.org/sites/default/files/chrpublications/asg-rhine-final-report-2017.pdf>.
- Stähli, M., S. Kruse, F. Fundel, M. Zappa, K. Stahl, L. Bernhard, and I. Seidl, 2013: drought.ch – auf dem Weg zu einer Trockenheits-Informationsplattform für die Schweiz. *Wasser Energie Luft*, **105 (2)**, 117–121.
- Staudinger, M., and J. Seibert, 2014: Predictability of low flow - An assessment with simulation experiments. *Journal of Hydrology*, **519 (PB)**, 1383–1393, doi:10.1016/j.jhydrol.2014.08.061.
- Staudinger, M., K. Stahl, and J. Seibert, 2014: A drought index accounting for snow. *Water Resources Research*, **50 (10)**, 7861–7872, doi:10.1002/2013WR015143.
- Staudinger, M., M. Weiler, and J. Seibert, 2015: Quantifying sensitivity to droughts-an experimental modeling approach. *Hydrology and Earth System Sciences*, **19 (3)**, 1371–1384, doi:10.5194/hess-19-1371-2015.
- Strasser, U., J. Corripio, F. Pellicciotti, P. Burlando, B. Brock, and M. Funk, 2004: Spatial and temporal variability of meteorological variables at Haut Glacier d’Arolla (Switzerland) during the ablation season 2001: Measurements and simulations. *Journal of Geophysical Research: Atmospheres*, **109 (3)**, 1–18, doi:10.1029/2003jd003973.
- Swiss Federal Office for the Environment, F., 2019: Hydrological models and quality of forecasts. URL <https://www.bafu.admin.ch/bafu/en/home/topics/water/info-specialists/state-of-waterbodies/swiss-hydrological-forecasts/hydrological-models-and-quality-of-forecasts.html>.
- Tague, C. L., and Coauthors, 2020: Adding our leaves: A community-wide perspective on research directions in ecohydrology. *Hydrological Processes*, **34 (7)**, 1665–1673.
- Terrier, S., M. Bieri, F. Jordan, and A. J. Schleiss, 2015: Impact du retrait glaciaire et adaptation du potentiel hydroélectrique dans les Alpes suisses. *Houille Blanche*, **(1)**, 93–101, doi:10.1051/lhb/2015012.
- Thielen, J., J. Bartholmes, M.-H. Ramos, and A. de Roo, 2009: The European Flood Alert System – Part 1: Concept and development. *Hydrology and Earth System Sciences*, **13 (2)**, 125–140, doi:10.5194/hess-13-125-2009.
- Thober, S., M. Cuntz, M. Kelbling, R. Kumar, J. Mai, and L. Samaniego, 2019: The multiscale routing model mRM v1.0: simple river routing at resolutions from 1 to 50 km. *Geoscientific Model Development*, **12 (6)**, 2501–2521, doi:10.5194/gmd-12-2501-2019.

- Thornton, J., T. Brauchli, G. Mariethoz, and P. Brunner, 2021: Efficient multi-objective calibration and uncertainty analysis of distributed snow simulations in rugged alpine terrain. *Journal of Hydrology*, doi:10.1016/j.jhydrol.2021.126241.
- Tobin, C., L. Nicotina, M. B. Parlange, A. Berne, and A. Rinaldo, 2011: Improved interpolation of meteorological forcings for hydrologic applications in a Swiss Alpine region. *Journal of Hydrology*, **401** (1-2), 77–89, doi:10.1016/j.jhydrol.2011.02.010.
- Tobin, C., A. Rinaldo, and B. Schaefli, 2012: Snowfall limit forecasts and hydrological modeling. *Journal of Hydrometeorology*, **13** (5), 1507–1519, doi:10.1175/JHM-D-11-0147.1.
- Todini, E., 1995: New Trends in Modelling Soil Processes from Hillslope to GCM Scales. *The Role of Water and the Hydrological Cycle in Global Change*, Springer Berlin Heidelberg, Berlin, Heidelberg, 317–347, doi:10.1007/978-3-642-79830-6\_11.
- Todini, E., and L. Ciarapica, 2002: The Topkapi Model. *Mathematical models of large watershed hydrology*, 471–506, doi:10.1006/hmat.1999.2234.
- Uhlmann, B., F. Jordan, and M. Beniston, 2013a: Modelling runoff in a Swiss glacierized catchment-part I: Methodology and application in the Findelen basin under a long-lasting stable climate. *International Journal of Climatology*, **33** (5), 1293–1300, doi:10.1002/joc.3501.
- Uhlmann, B., F. Jordan, and M. Beniston, 2013b: Modelling runoff in a Swiss glacierized catchment-Part II: Daily discharge and glacier evolution in the Findelen basin in a progressively warmer climate. *International Journal of Climatology*, **33** (5), 1301–1307, doi:10.1002/joc.3516.
- Valéry, A., V. Andréassian, and C. Perrin, 2014a: 'As simple as possible but not simpler': What is useful in a temperature-based snow-accounting routine? Part 1 - Comparison of six snow accounting routines on 380 catchments. *Journal of Hydrology*, **517**, 1166–1175, doi:10.1016/j.jhydrol.2014.04.059.
- Valéry, A., V. Andréassian, and C. Perrin, 2014b: 'As simple as possible but not simpler': What is useful in a temperature-based snow-accounting routine? Part 2 – Sensitivity analysis of the Cemaneige snow accounting routine on 380 catchments. *Journal of Hydrology*, **517**, 1176–1187, doi:10.1016/j.jhydrol.2014.04.058.
- van Osnabrugge, B., 2020: Interpolate simulate, assimilate: operational aspects of improving hydrological forecasts in the Rhine basin. Ph.D. thesis, Wageningen University, doi:10.18174/513157.
- van Osnabrugge, B., R. Uijlenhoet, and A. Weerts, 2019: Contribution of potential evaporation forecasts to 10-day streamflow forecast skill for the Rhine River. *Hydrology and Earth System Sciences*, **23** (3), 1453–1467, doi:10.5194/hess-23-1453-2019.
- van Osnabrugge, B., A. H. Weerts, and R. Uijlenhoet, 2017: genRE: A Method to Extend Gridded Precipitation Climatology Data Sets in Near Real-Time for Hydrological Forecasting Purposes. *Water Resources Research*, **53** (11), 9284–9303, doi:10.1002/2017wr021201.
- Verbunt, M., M. Groot Zwaaftink, and J. Gurtz, 2005: The hydrologic impact of land cover changes and hydropower stations in the Alpine Rhine basin. *Ecological Modelling*, **187**, 71–84, doi:10.1016/j.ecolmodel.2005.01.027.
- Verbunt, M., J. Gurtz, K. Jasper, H. Lang, P. Warmerdam, and M. Zappa, 2003: The hydrological role of snow and glaciers in alpine river basins and their distributed modeling. *Journal of Hydrology*, **282** (1-4), 36–55, doi:10.1016/S0022-1694(03)00251-8.
- Verbunt, M., A. Walser, J. Gurtz, A. Montani, and C. Schär, 2007: Probabilistic flood forecasting with a limited-area ensemble prediction system: Selected case studies. *Journal of Hydrometeorology*, **8** (4), 897–909, doi:10.1175/JHM594.1.
- Verbunt, M., M. Zappa, J. Gurtz, and P. Kaufmann, 2006: Verification of a coupled hydrometeorological modelling approach for alpine tributaries in the Rhine basin. *Journal of Hydrology*, **324** (1-4), 224–238, doi:10.1016/j.jhydrol.2005.09.036.
- Vionnet, V., E. Brun, S. Morin, A. Boone, S. Faroux, P. Le Moigne, E. Martin, and J. M. Willemet, 2012: The detailed snowpack scheme Crocus and its implementation in SURFEX v7.2. *Geoscientific Model Development*, **5** (3), 773–791, doi:10.5194/gmd-5-773-2012.

- Viviroli, D., H. Mittelbach, J. Gurtz, and R. Weingartner, 2009a: Continuous simulation for flood estimation in ungauged mesoscale catchments of Switzerland – Part II: Parameter regionalisation and flood estimation results. *Journal of Hydrology*, **377 (1-2)**, 208–225, doi:10.1016/j.jhydrol.2009.08.022.
- Viviroli, D., and J. Seibert, 2015: Can a regionalized model parameterisation be improved with a limited number of runoff measurements? *Journal of Hydrology*, **529 (P1)**, 49–61, doi:10.1016/j.jhydrol.2015.07.009.
- Viviroli, D., M. Zappa, J. Gurtz, and R. Weingartner, 2009b: An introduction to the hydrological modelling system PREVAH and its pre- and post-processing-tools. *Environmental Modelling & Software*, **24 (10)**, 1209–1222, doi:10.1016/j.envsoft.2009.04.001.
- Viviroli, D., M. Zappa, J. Schwanbeck, J. Gurtz, and R. Weingartner, 2009c: Continuous simulation for flood estimation in ungauged mesoscale catchments of Switzerland – Part I: Modelling framework and calibration results. *Journal of Hydrology*, **377 (1-2)**, 191–207, doi:10.1016/j.jhydrol.2009.08.023.
- Wanders, N., S. Thober, R. Kumar, M. Pan, J. Sheffield, L. Samaniego, and E. F. Wood, 2019: Development and Evaluation of a Pan-European Multimodel Seasonal Hydrological Forecasting System. *Journal of Hydrometeorology*, **20 (1)**, 99–115, doi:10.1175/jhm-d-18-0040.1.
- Weiler, M., and K. Beven, 2015: Do we need a Community Hydrological Model? *Water Resources Research*, **51 (9)**, 7777–7784, doi:10.1002/2014wr016731.
- Werner, M., J. Schellekens, P. Gijsbers, M. van Dijk, O. van den Akker, and K. Heynert, 2013: The Delft-FEWS flow forecasting system. *Environmental Modelling & Software*, **40**, 65–77, doi:10.1016/j.envsoft.2012.07.010.
- Westerberg, I. K., A. E. Sikorska-Senoner, D. Viviroli, M. Vis, and J. Seibert, 2020: Hydrological model calibration with uncertain discharge data. *Hydrological Sciences Journal*, **00 (00)**, 1–16, doi:10.1080/02626667.2020.1735638.
- Wever, N., F. Comola, M. Bavay, and M. Lehning, 2017: Simulating the influence of snow surface processes on soil moisture dynamics and streamflow generation in an alpine catchment. *Hydrology and Earth System Sciences*, **21 (8)**, 4053–4071, doi:10.5194/hess-21-4053-2017.
- Wittmer, I., H.-P. Bader, R. Scheidegger, and C. Stamm, 2013: REXPO: A catchment model designed to understand and simulate the loss dynamics of plant protection products and biocides from agricultural and urban areas. *Journal of Hydrology*, **533**, 486–514, doi:10.1016/j.jhydrol.2015.11.046.
- WMO, 1986: Intercomparison of models of snowmelt runoff - Operational hydrology report. Tech. Rep. 23, World Meteorological Organization (WMO), Geneva, Switzerland.
- WMO, 1992a: Simulated Real-Time Intercomparison of Hydrological Models - Operational hydrology report. Tech. Rep. 38, World Meteorological Organization (WMO), Geneva, Switzerland.
- WMO, W. M. O., 1992b: *International glossary of hydrology, 2nd edition*. 413 pp., URL Availableat:<https://hydrologie.org/glu/aglo.htm>(lastaccessedon12Jan2021).
- WMO, W. M. O., 2012: *International Glossary of Hydrology, 3rd edition*. 469 pp., URL value<https://unesdoc.unesco.org/ark:/48223/pf0000221862here>.
- Young, P. C., and P. E. Minchin, 1991: Environmetric time-series analysis: modelling natural systems from experimental time-series data. *International Journal of Biological Macromolecules*, **13 (3)**, 190–201, doi:10.1016/0141-8130(91)90046-w.
- Zappa, M., 2008: Objective quantitative spatial verification of distributed snow cover simulations - An experiment for the whole of Switzerland. *Hydrological Sciences Journal*, **53 (1)**, 179–191, doi:10.1623/hysj.53.1.179.
- Zappa, M., L. Bernhard, F. Fundel, and S. Jörg-Hess, 2012: Vorhersage und Szenarien von Schnee- und Wasserressourcen im Alpenraum. *Forum für Wissen*, 19–27.
- Zappa, M., and J. Gurtz, 2003: Simulation of soil moisture and evapotranspiration in a soil profile during the 1999 MAP-Riviera Campaign. *Hydrology and Earth System Sciences*, **7 (6)**, 903–919, doi:10.5194/hess-7-903-2003.

- Zappa, M., S. Jaun, U. Germann, A. Walser, and F. Fundel, 2011: Superposition of three sources of uncertainties in operational flood forecasting chains. *Atmospheric Research*, **100** (2-3), 246–262, doi:10.1016/j.atmosres.2010.12.005.
- Zappa, M., and C. Kan, 2007: Extreme heat and runoff extremes in the Swiss Alps. *Natural Hazards and Earth System Sciences*, **7** (3), 375–389, doi:10.5194/nhess-7-375-2007.
- Zappa, M., K. Liechti, A. Winstral, and M. Barben, 2019: Trockenheit in der Schweiz: Vergleich der Jahre 2003, 2015 und 2018. *Wasser Energ. Luft*, **111** (2), 95–100, URL <https://www.dora.lib4ri.ch/wsl/islandora/object/wsl:20111>.
- Zappa, M., and Coauthors, 2008: MAP D-PHASE: real-time demonstration of hydrological ensemble prediction systems. *Atmospheric Science Letters*, **9** (2), 80–87, doi:10.1002/asl.183.
- Zeimetz, F., B. Schaefli, G. Artigue, J. García Hernández, and A. J. Schleiss, 2017: Relevance of the correlation between precipitation and the 0 C isothermal altitude for extreme flood estimation. *Journal of Hydrology*, **551**, 177–187, doi:10.1016/j.jhydrol.2017.05.022.
- Zeimetz, F., B. Schaefli, G. Artigue, J. G. Hernández, and A. J. Schleiss, 2018: New approach to identifying critical initial conditions for extreme flood simulations in a semicontinuous simulation framework. *Journal of Hydrologic Engineering*, **23** (8), 1–9, doi:10.1061/(ASCE)HE.1943-5584.0001652.
- Zheng, F., H. R. Maier, W. Wu, G. C. Dandy, H. V. Gupta, and T. Zhang, 2018: On lack of robustness in hydrological model development due to absence of guidelines for selecting calibration and evaluation data: Demonstration for data-driven models. *Water Resources Research*, **54**, 1013–1030, doi:10.1002/2017WR021470.
- Zierl, B., and H. Bugmann, 2005: Global change impacts on hydrological processes in Alpine catchments. *Water Resources Research*, **41**, W02 028.

# Supplementary material to "Why do we have so many different hydrological models? A review based on the case of Switzerland"

Pascal Horton<sup>1</sup>, Bettina Schaeffli<sup>1</sup>, and Martina Kauzlaric<sup>1</sup>

<sup>1</sup>Institute of Geography & Oeschger Centre for Climate Change Research, University of Bern, Bern, Switzerland

## Abstract

This supplementary material contains two parts: first an extended version of the history of hydrological modelling in Switzerland, and second a table listing all modelling papers that were used for the analysis of Section 3 of the main paper (related to applications of hydrological models in Switzerland).

## 1 History of hydrological modelling in Switzerland

### 1.1 Preliminary remark

There was a journal entitled "Schweizerische Zeitschrift für Hydrologie" (Swiss journal for hydrology), published by Springer. The first issue of this journal was published in 1920 and called then "Zeitschrift für Hydrologie" (journal of hydrology). The journal changed its name in 1949 to Swiss journal of hydrology. It became "Aquatic sciences" in 1989 (Bossard, 1989) and is since then indexed on WebOfScience. The journal never had a particular focus on what we call hydrology today but was rooted in limnology and the hydrology of lakes (Tockner et al., 2009). The name was chosen in 1920 by the then called Swiss Hydrobiological Commission (Swiss Society for Hydrology and Limnology today) (Perret, 2001) despite of being strongly rooted in limnology at that time. Accordingly, the Swiss journal for hydrology does not appear here in this brief overview.

### 1.2 History of hydrological modelling in Switzerland

On WebOfScience, the very first hydrological modelling paper that refers to Switzerland (index search: hydrolog\* and model\* and Switzerland or Swiss) was published by Baumgartner et al. (1986) and was a proof of method for the use of remote sensing data for snow runoff modelling with the Snowmelt Runoff Model (SRM, Martinec, 1975). Journal of Hydrology has nevertheless published an earlier Swiss modelling paper, the work of Hager (1984), who used a no-name conceptual model to predict the effect of heavy rainfall on an 8 km<sup>2</sup> catchment in the Swiss lowlands.

Digging into professional journals and doctoral theses and conducting personal enquiries revealed the early hydrological modelling work of Naef (1974) for engineering applications. The work of Naef in particular also includes a very early hydrological model intercomparison study (Naef, 1977) where the behaviour of several conceptual models have been tested for three small well-instrumented catchments to understand if complex models yield better results than very simple ones.

The above work on input-output models (the focus of the main paper) in the 1970-1980ies was preceded by regression-based methods for real-time forecasting, specifically for inflow to hydropower plants (Jensen and Lang, 1973) and streamflow in the River Rhine (e.g. to predict downstream summer droughts, Lugiez et al., 1969).

Most of the early modelling work on streamflow with models representing hydrological processes (rather than purely statistical models) aimed at the development of operational forecast procedures and had a strong focus on snowmelt runoff and related streamflow, including in the lowland (Braun and Lang,

1986). Snowmelt modelling probably started with the work of Hoeck (1952), and modelling of snow runoff kept a strong influence on hydrological model development in the following decades.

The work of Braun and Lang (1986) combined the well-known temperature-index snow model (underlying also the SRM model; Martinec, 1975) to the simplest possible streamflow transformation model, which assumes that half of the snowmelt during a given time step reaches the stream directly and the other half reaches it following a linear recession. This simplified approach (compared to more recent runoff transformation routines that use a recession coefficient as in SRM), dates back to the work of Martinec (1970) on snowmelt runoff modelling, which is thus probably the earliest runoff modelling study in Switzerland.

Early modelling work also included glacier-melt runoff simulation (Braun and Aellen, 1990, who used a model called HBV3-ETH, not in use anymore). Braun and Renner (1992) completed first attempts of parameter regionalization, i.e. the transfer of model parameters from one catchment to another, based on catchment characteristics. The work of Hottel et al. (1993) is an early example of model adaptation to a specific catchment; they added three parameters to HBV-ETH to account for aspect dependent snowmelt and karst runoff for the Thur catchment. Part of the model diversity in Switzerland resulted from the work of geoscientists and engineers not directly specialised in catchment hydrology (Abednego et al., 1990; Baumgartner et al., 1986; Hager, 1984; Sautier and Delleur, 1980). During the same period, one of the very first climate change impact prediction studies in Switzerland was the work of Bultot et al. (1992), who applied a conceptual hydrological model called IRMB on a 212 km<sup>2</sup> lowland catchment. Jordan (1990) completed one of the first land-use change impact studies on streamflow in mountainous regions, using Topmodel.

Hydrologic process studies in experimental catchments started early on, with a focus on the role of forests on water quality and streamflow in the Alptal catchment (Keller, 1970, 1989) and a focus on rural runoff generation processes (Jaton, 1982).

Early attempts to use models for hypothesis testing and process understanding in experimental catchments (Jordan, 1990) were undertaken with Topmodel by Iorgulescu and Jordan (1994), with SHE by Jordan et al. (1987) and with OTTHYMO by Wisner and Jordan (1983).

In parallel to the work on streamflow quantity, Keller and Forster (1991) published an application of a model, called Brook, developed by Fédérer and Lash (1978) to assess the influence of streamflow sources on stream water chemistry; the model used was initially designed to assess the effect of forests on the water cycle and streamflow (Forster, 1989), a key topic (besides snow) during the early hydrologic model development phase (Keller, 1979; Hegg et al., 2006). Forest hydrology can in fact be considered as the very foundation of hydrologic research in Switzerland, initiated after the first Swiss federal law on forest protection 1867 (Keller, 1985; Hegg et al., 2006).

Finally, it is important to point out that the above overview lacks reference to a strong driver of hydrologic prediction methods: the development of hydropower in Switzerland, which was very pronounced in the early 20th century (Jeger, 1942). The design and management needs of hydropower certainly had a strong push on the development of hydrological models, but early documents are hard to find nowadays. It also drove the development of prediction methods for ungauged catchments during the early development phase (Bruschin and North, 1977), and later on, motivated the development of a large body of detailed climate change impact studies on hydropower and high Alpine streamflow regimes (Westaway, 2000; Schaeffli, 2015).



## 2 Hydrological model uses

This section lists the articles (Table 2) that were used for the analysis of Sect. 3 of the main paper. An analysis of the temporal evolution of model use (Fig. 1) suggests a small opening to international models.

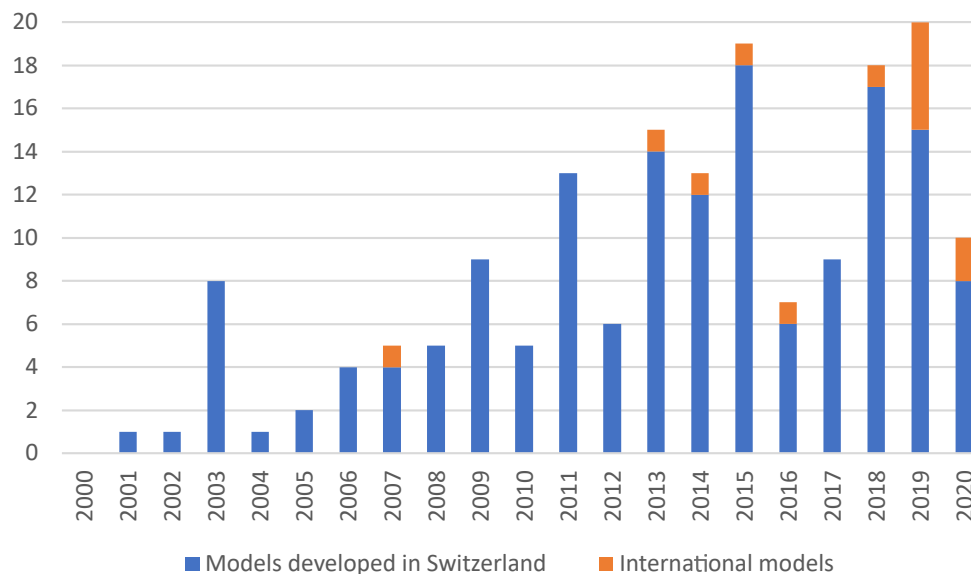


Figure 1: Number of articles reporting applications of hydrological models over the years with a distinction of the models developed in Switzerland and international models. The relatively higher peak in 2003 is mainly due to articles related to the MAP project (Mesoscale Alpine Programme).

Table 1: List of reviewed modelling papers ordered by dates and author names. Adequacy: the adequacy of the model with the landscape or use case has been justified; Reuse: the model set up has been explicitly reused from previous work; Affiliation: the first author is affiliated with the institute where the model is being developed; Co-auth.: the model developer or its lead scientist is co-authoring the paper.

Reference	Model(s)	Field of application	Location	Adequacy	Reuse	Affiliation	Co-auth.
Middelkoop et al. (2001)	WaSIM	climate change, floods, droughts	Rhine	N	N	*	Y

Jasper et al. (2002)	WaSIM	forecasting, floods	Ticino, Verzasca, Maggia	Y	N	Y	Y
Ahrens et al. (2003)	WaSIM	forecasting	Ticino, Verzasca, Maggia	N	N	N	Y
Ahrens (2003a)	WaSIM	forecasting	Ticino, Verzasca, Maggia	N	Y	N	N
Ahrens (2003b)	WaSIM	forecasting	Ticino, Verzasca, Maggia	+−	N	N	N
Gurtz et al. (2003)	PREVAH, WaSiM	others	Dischmabach, Rietholz- bach	*	N	Y	Y
Jasper and Kaufmann (2003)	WaSIM	forecasting	Ticino, Verzasca, Maggia	Y	N	Y	Y
Verbunt et al. (2003)	WaSIM	cryosphere	Massa, Rhone, Dis- chmabach	+−	N	Y	Y
Zappa and Gurtz (2003)	PREVAH	others	Ticino	*	N	Y	Y
Jasper et al. (2004)	WaSIM	climate change	Thur, Ticino	+−	N	Y	Y
Kleinn et al. (2005)	WaSIM	climate change	Rhine	*	*	*	*
Verbunt et al. (2005)	WaSIM	others	Swiss Alpine Rhine basin	+−	N	Y	Y
Zierl and Bugmann (2005)	RHESSys	climate change	Alptal, Saltina, Verzasca, Dischma	Y	N	N	N
Calanca et al. (2006)	WaSIM	climate change	Thur, Ticino, Rhone	+−	N	Y	Y
Horton et al. (2006)	GSM-SOCONT	climate change	11 catchments	N	N	Y	Y
Jasper et al. (2006)	WaSIM	climate change	Thur	Y	N	Y	Y
Verbunt et al. (2006)	PREVAH	forecasting, floods	Upper Rhine basin	Y	N	N	Y
Abbaspour et al. (2007)	SWAT	others	Thur	N	N	N	Y
Schaepli et al. (2007b)	GSM-SOCONT	others	Mauvoisin	N	N	Y	Y
Schaepli et al. (2007a)	GSM-SOCONT	climate change	Mauvoisin	N	N	Y	Y
Verbunt et al. (2007)	PREVAH	forecasting, floods	Almost countrywide	+−	Y	N	N
Zappa and Kan (2007)	PREVAH	cryosphere, droughts	Thur, Rhone, Lüttschine	+−	N	Y	Y
Cullmann and Wriedt (2008)	WaSIM	others	Rietholz- bach	N	N	N	N
Jaun et al. (2008)	PREVAH	forecasting, floods	Almost countrywide	N	N	N	N
Zappa (2008)	PREVAH	cryosphere	Whole Switzerland	*	N	Y	Y
Zappa et al. (2008)	PREVAH, HBV	forecasting, floods	Verzasca, Kleine Emme	*	*	Y	Y
Bavay et al. (2009)	ALPINE3D	climate change, cryosphere	Dischma, Inn	Y	N	Y	Y
Foglia et al. (2009a)	TOPKAPI	others	Maggia valley	+−	N	N	N

Foglia et al. (2009b)	TOPKAPI	others	Maggia valley	Y	N	N	N
García Hernández et al. (2009)	GSM-SOCONT, RS	forecasting, floods	Rhone	N	N	Y	Y
Jaun and Ahrens (2009)	PREVAH	forecasting	Upper Rhine basin	N	N	Y	N
Schaefli and Zehe (2009)	GSM-SOCONT	others	Rhone	N	N	Y	Y
Thielen et al. (2009)	LISFLOOD	forecasting, floods	European scale	*	*	*	*
Viviroli et al. (2009b)	PREVAH	floods	Countrywide	Y	N	Y	Y
Viviroli et al. (2009a)	PREVAH	floods	Upper Rhine basin	Y	N	Y	Y
Hingray et al. (2010)	GSM-SOCONT	floods	Rhone	N	N	Y	Y
Jordan et al. (2010)	GSM-SOCONT, RS	forecasting, floods	Rhone	N	N	Y	Y
Köplin et al. (2010)	PREVAH	climate change, floods	Countrywide	Y	N	Y	Y
Rößler and Löffler (2010)	WaSIM	others	Lonza (Lötschental valley)	*	N	N	N
Addor et al. (2011)	PREVAH	forecasting, floods	Sihl catchment	N	Y	Y	Y
Cullmann et al. (2011)	WaSIM	others	Thur	N	Y	N	N
Finger et al. (2011)	TOPKAPI	cryosphere	Rhonegletscher	N	N	Y	Y
Fundel and Zappa (2011)	PREVAH	forecasting	Thur, Alp, Verzasca	Y	N	Y	Y
Hindshaw et al. (2011)	ALPINE3D	cryosphere, others	Damma glacier	+−	Y	N	N
Junghans et al. (2011)	HBV, GERM	climate change, cryosphere	Upper Rhine basin	+−	N	N	Y
Kobierska et al. (2011)	PREVAH, ALPINE3D	climate change, cryosphere	Damma glacier	N	N	Y	*
Konz et al. (2011)	TOPKAPI	others	Chiene catchment	+−	N	Y	Y
Schaefli and Huss (2011)	GSM-SOCONT	cryosphere	Rhonegletscher	+−	N	Y	Y
Tobin et al. (2011)	GSM-SOCONT	forecasting	Visp, Dranse	N	Y	Y	N
Zappa et al. (2011)	PREVAH	forecasting, floods	Verzasca	Y	N	Y	Y
Farinotti et al. (2012)	GERM	climate change, cryosphere	9 catchments	*	N	N	Y
Finger et al. (2012)	TOPKAPI	climate change, cryosphere	Vispa	N	N	Y	Y

Fuhrer and Jasper (2012)	WaSIM	others	6 catchments	Y	N	Y	Y
Köplin et al. (2012)	PREVAH	climate change	Whole Switzerland	N	N	Y	Y
Rössler et al. (2012)	WaSIM	climate change, droughts	Lonza (Lötschental valley)	+−	Y	N	N
Tobin et al. (2012)	GSM-SOCONT	forecasting	Rhone	N	N	Y	Y
Bavay et al. (2013)	ALPINE3D	climate change, cryosphere	Grisons	Y	N	Y	Y
Bieri and Schleiss (2013)	GSM-SOCONT, RS	floods	Aare	N	N	Y	N
Bosshard et al. (2013)	PREVAH, HBV	climate change	Alpine Rhine	N	Y	N	Y
Finger et al. (2013)	GERM	climate change, cryosphere	Glacier de la Plaine Morte	+−	N	N	Y
Foglia et al. (2013)	TOPKAPI	others	Maggia valley	N	N	N	N
Fundel et al. (2013)	PREVAH	forecasting, droughts	Thur	N	Y	Y	Y
Kobierska et al. (2013)	PREVAH, ALPINE3D	climate change, cryosphere	Göscheralpsee	Y	Y	Y	Y
Köplin et al. (2013)	PREVAH	climate change, cryosphere	Whole Switzerland	Y	Y	Y	Y
Liechti et al. (2013)	PREVAH	forecasting, floods	Verzasca, Pincascia	N	N	Y	Y
Rahman et al. (2013)	SWAT	others	Rhone	*	N	N	?
Uhlmann et al. (2013)	GSM-SOCONT, RS	climate change, cryosphere	Findelen basin	+−	N	N	Y
Addor et al. (2014)	HBV-light, PREVAH, WaSiM	climate change	6 catchments	*	*	*	*
Alaoui et al. (2014)	WaSIM	climate change	Ursern Valley	+−	N	N	Y
Bosshard et al. (2014)	PREVAH	climate change	Rhone	*	*	*	*
Fatichi et al. (2014)	TOPKAPI	climate change	Rhone	Y	N	Y	Y
Köplin et al. (2014b)	PREVAH	climate change, floods	Whole Switzerland	N	N	Y	Y
Köplin et al. (2014a)	PREVAH	climate change, cryosphere	Whole Switzerland	N	Y	Y	N
Paschalis et al. (2014)	TOPKAPI	floods	Kleine Emme	Y	N	Y	Y

Rahman et al. (2014)	SWAT	climate change	Rhone	+-	N	N	N
Rössler et al. (2014)	WaSIM	floods	Lonza (Lötschental valley)	Y	Y	N	N
Staudinger and Seibert (2014)	HBV-light	forecasting, droughts	21 catchments	N	N	Y	Y
Staudinger et al. (2014)	HBV-light	droughts, cryosphere	7 catchments	N	N	Y	Y
Comola et al. (2015a)	ALPINE3D	others	Dischma	N	N	Y	Y
Comola et al. (2015b)	ALPINE3D	cryosphere	Dischma	Y	N	Y	Y
Fatichi et al. (2015)	TOPKAPI	climate change	Rhone	Y	N	Y	Y
Finger et al. (2015)	HBV-light	cryosphere	Rhone, Hinterrhein, Landquart	+-	N	Y	Y
Jörg-Hess et al. (2015b)	PREVAH	forecasting, droughts	Landquart, Thur	N	Y	Y	Y
Jörg-Hess et al. (2015a)	PREVAH	forecasting, cryosphere	Thur, Rhine, Hinter Rhine, Vorder Rhine, Vorarlberg, Landquart Plessur	N	Y	Y	Y
Junker et al. (2015)	PREVAH	climate change	Kleine Emme	+-	Y	N	Y
Milano et al. (2015b)	PREVAH	climate change, droughts	9 catchments	N	N	N	N
Milano et al. (2015a)	PREVAH	climate change	9 catchments in VD	Y	N	N	N
Orth et al. (2015)	PREVAH, HBV	floods, droughts	Ergolz, Murg, Broye, Langeten, Cassarate, Sense, Emme, Dischma	+-	N	N	Y
Pappas et al. (2015)	TOPKAPI	others	Kleine Emme	+-	N	Y	Y
Rahman et al. (2015)	SWAT	climate change	Rhone	+-	Y	N	?
Raymond Pralong et al. (2015)	PREVAH	climate change	66 small catchments	+-	N	Y	Y
Speich et al. (2015)	PREVAH	climate change, cryosphere	Countrywide	N	N	Y	Y
Staudinger et al. (2015)	HBV-light	droughts	24 catchments	N	N	Y	Y
Terrier et al. (2015)	GSM-SOCONT, RS	climate change	Aare	+-	Y	Y	Y
Viviroli and Seibert (2015)	PREVAH	others	49 catchments	Y	N	Y	Y
Andres et al. (2016)	PREVAH, RS	forecasting, floods	Canton Ticino	+-	Y	Y	Y
Donnelly et al. (2016)	HYPE	others	European scale	*	*	*	*

Girons Lopez and Seibert (2016)	HBV-light	others	Thur	Y	N	Y	Y
Griessinger et al. (2016)	HBV-light	forecasting, cryosphere	20 catchments	N	N	Y	Y
Melsen et al. (2016)	VIC	others	Thur	+−	N	N	N
Schaepli (2016)	SEHR-ECHO	cryosphere	Dischma	N	N	Y	Y
Sikorska and Seibert (2016)	HBV-light	forecasting, floods	Plessur	N	N	Y	Y
Brauchli et al. (2017)	ALPINE3D	cryosphere	Dischma	Y	N	Y	Y
Etter et al. (2017)	HBV-light	climate change, cryosphere	Gigerwaldsee	N	N	Y	N
Felder and Weingartner (2017)	PREVAH	floods	Aare	Y	N	Y	N
Marty et al. (2017)	ALPINE3D	climate change, cryosphere	Aare, Grisons	N	N	Y	Y
Sikorska et al. (2017)	HBV-light	floods	9 catchments	N	N	Y	Y
Staudinger et al. (2017)	HBV-light	others	21 catchments	N	N	Y	Y
van Osnabrugge et al. (2017)	wflow_hbv	forecasting	Rhine	*	*	*	*
Wever et al. (2017)	ALPINE3D	cryosphere, floods	Dischma	Y	N	Y	Y
Zeimetz et al. (2017)	GSM-SOCONT	floods	Mattmark	N	N	Y	Y
Anghileri et al. (2018)	TOPKAPI	climate change, cryosphere	Visp	Y	N	Y	N
Bogner et al. (2018b)	PREVAH	forecasting, floods	Sihl catchment	N	Y	Y	Y
Bogner et al. (2018a)	PREVAH	forecasting, droughts	Countrywide	N	N	Y	Y
Brunner et al. (2018)	HBV-light	climate change, floods	8 catchments	+−	N	Y	Y
Etter et al. (2018)	HBV-light	others	6 catchments	N	N	Y	Y
Hakala et al. (2018)	HBV-light	climate change	10 catchments	N	N	Y	Y
Jenicek et al. (2018)	HBV-light	climate change, droughts, cryosphere	14 catchments	N	N	N	Y
Meyer et al. (2019)	HBV-light	climate change, cryosphere	Hinterrhein, Schwarze Lüttschine	+−	N	N	Y
Rössler and Brönnimann (2018)	WaSIM	floods	Rhine	N	N	N	N
Shakoor et al. (2018)	ALPINE3D	cryosphere	Damma, Arolla	Y	N	Y	Y

Sikorska and Seibert (2018)	HBV-light	others	13 catchments	N	N	Y	Y
Stucki et al. (2018)	PREVAH, RS	floods	Lago Maggiore	N	Y	N	N
Zarrineh et al. (2018)	SWAT	others	Broye	+−	N	N	N
Zeimetz et al. (2018b)	GSM-SOCONT	floods	Mattmark	N	Y	Y	Y
Zeimetz et al. (2018a)	GSM-SOCONT, RS	floods, cryosphere	Mattmark Dam	N	N	Y	Y
Zischg et al. (2018)	PREVAH	floods	Aare	N	Y	Y	N
Ancey et al. (2019)	GERM	cryosphere	Giétro	N	N	N	Y
Andrianaki et al. (2019)	SWAT	cryosphere	Damma glacier watershed	*	N	N	N
Anghileri et al. (2019)	PREVAH	forecasting	Verzasca	Y	Y	N	Y
Antonetti et al. (2019)	PREVAH	forecasting, floods	Emme	N	N	Y	Y
Brunner et al. (2019e)	PREVAH	droughts	Countrywide	N	N	Y	Y
Brunner et al. (2019a)	PREVAH	climate change, droughts	Countrywide	Y	N	Y	Y
Brunner and Sikorska-Senoner (2019)	HBV-light	floods	9 catchments	N	N	N	N
Brunner et al. (2019b)	PREVAH	climate change, floods, droughts	19 regions	N	Y	Y	Y
Brunner et al. (2019c)	PREVAH	climate change, floods	Countrywide	Y	N	Y	Y
Brunner et al. (2019d)	PREVAH	droughts	Countrywide	Y	Y	Y	Y
Keller et al. (2019b)	GR6J	climate change, floods	Emme	N	N	N	N
Keller et al. (2019a)	WaSIM	climate change, floods	Thur	N	N	N	N
Mastrotheodoros et al. (2019)	VIC	floods, droughts	Thur	+−	N	N	N
Melsen et al. (2019)	VIC	others, floods, droughts	Thur	N	Y	N	N
Monhart et al. (2019)	PREVAH	forecasting	Verzasca, Thur, Klöntal	N	N	Y	Y
Müller-Thomy and Sikorska-Senoner (2019)	HBV-light	floods	9 catchments	N	N	N	N
Rössler et al. (2019)	WaSIM	climate change	Thur	N	N	N	N
Van Osnabrugge et al. (2019)	wflow_hbv	forecasting	Rhine	*	*	*	*
Wanders et al. (2019)	mHM	forecasting	European scale	*	*	*	*
Battista et al. (2020b)	TOPKAPI	others	Kleine Emme	Y	N	Y	N
Battista et al. (2020a)	TOPKAPI	others	Kleine Emme	Y	N	Y	N

Dal Molin et al. (2020)	SUPERFLEX	others	Thur	*	N	Y	Y
Etter et al. (2020)	HBV-light	others	Murg, Guerbe, Mentue, Verzasca	N	N	Y	Y
Giordani et al. (2020)	PREVAH	forecasting, floods	Verzasca	N	Y	N	Y
Hakala et al. (2020)	HBV-light	climate change, floods, droughts	Montsalvens, Vernex	N	N	Y	Y
Rottler et al. (2020)	mHM	climate change, floods	Rhine	*	*	*	*
Sikorska-Senoner et al. (2020)	HBV	floods	Dünnern at Olten	+−	N	Y	Y
Westerberg et al. (2020)	HBV-light	others	Kander, Broye, Wigger	N	N	N	Y
Zarrineh et al. (2020)	SWAT	climate change	Broye	N	Y	N	N
Thornton et al. (2021)	WaSIM	cryosphere	Vallon de Nant	Y	N	N	N

\* not relevant or not analysed



## Acknowledgement

We would like to thank Jean-Pierre Jordan, Anton Schleiss, Manfred Stähli and Ludwig Braun for their references for this part.

## References

- Abbaspour, K. C., J. Yang, I. Maximov, R. Siber, K. Bogner, J. Mieleitner, J. Zobrist, and R. Srinivasan, 2007: Modelling hydrology and water quality in the pre-alpine/alpine Thur watershed using SWAT. *Journal of Hydrology*, **333** (2-4), 413–430, doi:10.1016/j.jhydrol.2006.09.014.
- Abednego, B., R. Caloz, and C. Collet, 1990: L’utilisation des SIG dans la modélisation en hydrologie de surface. *Geogr. Helv.*, **45** (4), 161–167.
- Addor, N., S. Jaun, F. Fundel, and M. Zappa, 2011: An operational hydrological ensemble prediction system for the city of Zurich (Switzerland): Skill, case studies and scenarios. *Hydrology and Earth System Sciences*, **15** (7), 2327–2347, doi:10.5194/hess-15-2327-2011.
- Addor, N., O. Rössler, N. Köplin, M. Huss, R. Weingartner, and J. Seibert, 2014: Robust changes and sources of uncertainty in the projected hydrological regimes of Swiss catchments. *Water Resources Research*, **50** (10), 7541–7562, doi:10.1002/2014WR015549.
- Ahrens, B., 2003a: Evaluation of precipitation forecasting with the limited area model ALADIN in an alpine watershed. *Meteorologische Zeitschrift*, **12** (5), 245–255, doi:10.1127/0941-2948/2003/0012-0245.
- Ahrens, B., 2003b: Rainfall downscaling in an alpine watershed applying a multiresolution approach. *Journal of Geophysical Research: Atmospheres*, **108** (8), 1–12, doi:10.1029/2001jd001485.
- Ahrens, B., K. Jasper, and J. Gurtz, 2003: On ALADIN precipitation modeling and validation in an Alpine watershed. *Annales Geophysicae*, **21** (3), 627–637, doi:10.5194/angeo-21-627-2003.
- Alaoui, A., E. Willmann, K. Jasper, G. Felder, F. Herger, J. Magnusson, and R. Weingartner, 2014: Modelling the effects of land use and climate changes on hydrology in the Ursern Valley, Switzerland. *Hydrological Processes*, **28** (10), 3602–3614, doi:10.1002/hyp.9895.
- Ancey, C., E. Bardou, M. Funk, M. Huss, M. A. Werder, and T. Trehwela, 2019: Hydraulic Reconstruction of the 1818 Giétro Glacial Lake Outburst Flood. *Water Resources Research*, **55** (11), 8840–8863, doi:10.1029/2019WR025274.
- Andres, N., G. Lieberherr, I. V. Sideris, F. Jordan, and M. Zappa, 2016: From calibration to real-time operations: an assessment of three precipitation benchmarks for a Swiss river system. *Meteorological Applications*, **23** (3), 448–461, doi:10.1002/met.1569.
- Andrianaki, M., J. Shrestha, F. Kobierska, N. P. Nikolaidis, and S. M. Bernasconi, 2019: Assessment of SWAT spatial and temporal transferability for a high-altitude glacierized catchment. *Hydrology and Earth System Sciences*, **23** (8), 3219–3232, doi:10.5194/hess-23-3219-2019.
- Anghileri, D., M. Botter, A. Castelletti, H. Weigt, and P. Burlando, 2018: A Comparative Assessment of the Impact of Climate Change and Energy Policies on Alpine Hydropower. *Water Resources Research*, **54** (11), 9144–9161, doi:10.1029/2017WR022289.
- Anghileri, D., S. Monhart, C. Zhou, K. Bogner, A. Castelletti, P. Burlando, and M. Zappa, 2019: The Value of Subseasonal Hydrometeorological Forecasts to Hydropower Operations: How Much Does Pre-processing Matter? *Water Resources Research*, **55** (12), 10 159–10 178, doi:10.1029/2019WR025280.
- Antonetti, M., C. Horat, I. V. Sideris, and M. Zappa, 2019: Ensemble flood forecasting considering dominant runoff processes - Part 1: Set-up and application to nested basins (Emme, Switzerland). *Natural Hazards and Earth System Sciences*, **19** (1), 19–40, doi:10.5194/nhess-19-19-2019.

- Battista, G., P. Molnar, and P. Burlando, 2020a: Modelling impacts of spatially variable erosion drivers on suspended sediment dynamics. *Earth Surface Dynamics*, **8** (3), 619–635, doi:10.5194/esurf-8-619-2020.
- Battista, G., F. Schlunegger, P. Burlando, and P. Molnar, 2020b: Modelling localized sources of sediment in mountain catchments for provenance studies. *Earth Surface Processes and Landforms*, **45** (14), 3475–3487, doi:10.1002/esp.4979.
- Baumgartner, M. F., J. Martinec, and K. Seidel, 1986: Large-area deterministic simulation of natural runoff from snowmelt based on landsat mss data. *Ieee Transactions on Geoscience and Remote Sensing*, **24** (6), 1013–1017.
- Bavay, M., T. Grünewald, and M. Lehning, 2013: Response of snow cover and runoff to climate change in high Alpine catchments of Eastern Switzerland. *Advances in Water Resources*, **55** (2013), 4–16, doi:10.1016/j.advwatres.2012.12.009.
- Bavay, M., M. Lehning, T. Jonas, and H. Löwe, 2009: Simulations of future snow cover and discharge in Alpine headwater catchments. *Hydrological Processes*, **23** (1), 95–108, doi:10.1002/hyp.7195.
- Bieri, M., and A. J. Schleiss, 2013: Analysis of flood-reduction capacity of hydropower schemes in an Alpine catchment area by semidistributed conceptual modelling. *Journal of Flood Risk Management*, **6** (3), 169–185, doi:10.1111/j.1753-318X.2012.01171.x.
- Bogner, K., K. Liechti, L. Bernhard, S. Monhart, and M. Zappa, 2018a: Skill of Hydrological Extended Range Forecasts for Water Resources Management in Switzerland. *Water Resources Management*, **32** (3), 969–984, doi:10.1007/s11269-017-1849-5.
- Bogner, K., K. Liechti, and M. Zappa, 2018b: Error Correcting and Combining Multi-model Flood Forecasting Systems. *Advances in Hydroinformatics*, 569–578, doi:10.1007/978-981-10-7218-5\_40.
- Bossard, P., 1989: Editorial. *Aquatic Sciences*, **51** (1), 1–1.
- Bosshard, T., M. Carambia, K. Goergen, S. Kotlarski, P. Krahe, M. Zappa, and C. Schär, 2013: Quantifying uncertainty sources in an ensemble of hydrological climate-impact projections. *Water Resources Research*, **49** (3), 1523–1536, doi:10.1029/2011WR011533.
- Bosshard, T., S. Kotlarski, M. Zappa, and C. Schär, 2014: Hydrological Climate-Impact Projections for the Rhine River: GCM–RCM Uncertainty and Separate Temperature and Precipitation Effects. *Journal of Hydrometeorology*, **15** (2), 697–713, doi:10.1175/JHM-D-12-098.1.
- Brauchli, T., E. Trujillo, H. Huwald, and M. Lehning, 2017: Influence of Slope-Scale Snowmelt on Catchment Response Simulated With the Alpine3D Model. *Water Resources Research*, **53** (12), 10723–10739, doi:10.1002/2017WR021278.
- Braun, L., and H. Lang, 1986: Simulation of snowmelt runoff in lowland and lower alpine regions of switzerland.
- Braun, L. N., and M. Aellen, 1990: Modelling discharge of glacierized basins assisted by direct measurements of glacier mass balance. *Hydrology in Mountainous Regions. I – Hydrological Measurements. IAHS Publ. No. 193*, H. Lang, and A. Musy, Eds., IAHS, Wallingford, Oxfordshire UK, 99–106.
- Braun, L. N., and C. B. Renner, 1992: Application of a conceptual runoff model in different physiographic regions of switzerland. *Hydrological Sciences Journal*, **37** (3), 217–231.
- Brunner, M. I., A. Björnson Gurung, M. Zappa, H. Zekollari, D. Farinotti, and M. Stähli, 2019a: Present and future water scarcity in Switzerland: Potential for alleviation through reservoirs and lakes. *Science of the Total Environment*, **666**, 1033–1047, doi:10.1016/j.scitotenv.2019.02.169.
- Brunner, M. I., D. Farinotti, H. Zekollari, M. Huss, and M. Zappa, 2019b: Future shifts in extreme flow regimes in Alpine regions. *Hydrology and Earth System Sciences*, **23** (11), 4471–4489, doi:10.5194/hess-23-4471-2019.
- Brunner, M. I., B. Hingray, M. Zappa, and A. C. Favre, 2019c: Future Trends in the Interdependence Between Flood Peaks and Volumes: Hydro-Climatological Drivers and Uncertainty. *Water Resources Research*, **55** (6), 4745–4759, doi:10.1029/2019WR024701.

- Brunner, M. I., K. Liechti, and M. Zappa, 2019d: Extremeness of recent drought events in Switzerland: dependence on variable and return period choice. *Natural Hazards and Earth System Sciences*, **19** (10), 2311–2323, doi:10.5194/nhess-19-2311-2019.
- Brunner, M. I., A. E. Sikorska, and J. Seibert, 2018: Bivariate analysis of floods in climate impact assessments. *Science of the Total Environment*, **616-617**, 1392–1403, doi:10.1016/j.scitotenv.2017.10.176.
- Brunner, M. I., and A. E. Sikorska-Senoner, 2019: Dependence of flood peaks and volumes in modeled discharge time series: Effect of different uncertainty sources. *Journal of Hydrology*, **572** (March), 620–629, doi:10.1016/j.jhydrol.2019.03.024.
- Brunner, M. I., M. Zappa, and M. Stähli, 2019e: Scale matters: Effects of temporal and spatial data resolution on water scarcity assessments. *Advances in Water Resources*, **123** (September 2018), 134–144, doi:10.1016/j.advwatres.2018.11.013.
- Bruschin, J., and M. North, 1977: Projekthochwasser für einzugsgebiete ohne abflussbeobachtungen. *Schweizerische Bauzeitung*, **95** (25).
- Bultot, F., D. Gellens, M. Spreafico, and B. Schadler, 1992: Repercussions of a co2 doubling on the water balance - a case-study in switzerland. *Journal of Hydrology*, **137** (1-4), 199–208.
- Calanca, P., A. Roesch, K. Jasper, and M. Wild, 2006: Global warming and the summertime evapotranspiration regime of the Alpine region. *Climatic Change*, **79** (1-2), 65–78, doi:10.1007/s10584-006-9103-9.
- Comola, F., B. Schaefli, A. Rinaldo, and M. Lehning, 2015a: Thermodynamics in the hydrologic response: Travel time formulation and application to Alpine catchments. *Water Resources Research*, **51** (3), 1671–1687, doi:10.1002/2014WR016228.
- Comola, F., B. Schaefli, P. D. Ronco, G. Botter, M. Bavay, A. Rinaldo, and M. Lehning, 2015b: Scale-dependent effects of solar radiation patterns on the snow-dominated hydrologic response. *Geophysical Research Letters*, **42** (10), 3895–3902, doi:10.1002/2015GL064075.
- Cullmann, J., T. Krausse, and P. Saile, 2011: Parameterising hydrological models - Comparing optimisation and robust parameter estimation. *Journal of Hydrology*, **404** (3-4), 323–331, doi:10.1016/j.jhydrol.2011.05.003.
- Cullmann, J., and G. Wriedt, 2008: Joint application of event-based calibration and dynamic identifiability analysis in rainfall-runoff modelling: Implications for model parametrisation. *Journal of Hydroinformatics*, **10** (4), 301–316, doi:10.2166/hydro.2008.055.
- Dal Molin, M., M. Schirmer, M. Zappa, and F. Fenicia, 2020: Understanding dominant controls on streamflow spatial variability to set up a semi-distributed hydrological model: The case study of the Thur catchment. *Hydrology and Earth System Sciences*, **24** (3), 1319–1345, doi:10.5194/hess-24-1319-2020.
- Donnelly, C., J. C. Andersson, and B. Arheimer, 2016: Using flow signatures and catchment similarities to evaluate the E-HYPE multi-basin model across Europe. *Hydrological Sciences Journal*, **61** (2), 255–273, doi:10.1080/02626667.2015.1027710, URL <http://dx.doi.org/10.1080/02626667.2015.1027710>.
- Etter, S., N. Addor, M. Huss, and D. Finger, 2017: Climate change impacts on future snow, ice and rain runoff in a Swiss mountain catchment using multi-dataset calibration. *Journal of Hydrology: Regional Studies*, **13** (August), 222–239, doi:10.1016/j.ejrh.2017.08.005.
- Etter, S., B. Strobl, J. Seibert, and H. J. Ilja Van Meerveld, 2018: Value of uncertain streamflow observations for hydrological modelling. *Hydrology and Earth System Sciences*, **22** (10), 5243–5257, doi:10.5194/hess-22-5243-2018.
- Etter, S., B. Strobl, J. Seibert, and H. J. van Meerveld, 2020: Value of Crowd-Based Water Level Class Observations for Hydrological Model Calibration. *Water Resources Research*, **56** (2), 1–17, doi:10.1029/2019WR026108.

- Farinotti, D., S. Usselman, M. Huss, A. Bauder, and M. Funk, 2012: Runoff evolution in the Swiss Alps: Projections for selected high-alpine catchments based on ENSEMBLES scenarios. *Hydrological Processes*, **26** (13), 1909–1924, doi:10.1002/hyp.8276.
- Fatichi, S., S. Rimkus, P. Burlando, and R. Bordoy, 2014: Does internal climate variability overwhelm climate change signals in streamflow? The upper Po and Rhone basin case studies. *Science of the Total Environment*, **493**, 1171–1182, doi:10.1016/j.scitotenv.2013.12.014.
- Fatichi, S., S. Rimkus, P. Burlando, R. Bordoy, and P. Molnar, 2015: High-resolution distributed analysis of climate and anthropogenic changes on the hydrology of an Alpine catchment. *Journal of Hydrology*, **525**, 362–382, doi:10.1016/j.jhydrol.2015.03.036.
- Fédérer, C. A., and D. Lash, 1978: Brook: A hydrologic simulation model for eastern forests. water resource research center, university of new hampshire, durham, new hampshire, usa. 84.
- Felder, G., and R. Weingartner, 2017: Assessment of deterministic PMF modelling approaches. *Hydrological Sciences Journal*, **62** (10), 1591–1602, doi:10.1080/02626667.2017.1319065.
- Finger, D., G. Heinrich, A. Gobiet, and A. Bauder, 2012: Projections of future water resources and their uncertainty in a glacierized catchment in the Swiss Alps and the subsequent effects on hydropower production during the 21st century. *Water Resources Research*, **48** (2), 1–20, doi:10.1029/2011WR010733.
- Finger, D., F. Pellicciotti, M. Konz, S. Rimkus, and P. Burlando, 2011: The value of glacier mass balance, satellite snow cover images, and hourly discharge for improving the performance of a physically based distributed hydrological model. *Water Resources Research*, **47** (7), 1–14, doi:10.1029/2010WR009824.
- Finger, D., M. Vis, M. Huss, and J. Seibert, 2015: The value of multiple data set calibration versus model complexity for improving the performance of hydrological models in mountain catchments. *Water Resources Research*, **51** (4), 1939–1958, doi:10.1002/2014WR015712.
- Finger, D., and Coauthors, 2013: Identification of glacial meltwater runoff in a karstic environment and its implication for present and future water availability. *Hydrology and Earth System Sciences*, **17** (8), 3261–3277, doi:10.5194/hess-17-3261-2013.
- Foglia, L., M. C. Hill, S. W. Mehl, and P. Burlando, 2009a: Sensitivity analysis, calibration, and testing of a distributed hydrological model using error-based weighting and one objective function. *Water Resources Research*, **45** (6), 1–18, doi:10.1029/2008WR007255.
- Foglia, L., M. C. Hill, S. W. Mehl, and P. Burlando, 2009b: Sensitivity analysis, calibration, and testing of a distributed hydrological model using error-based weighting and one objective function. *Water Resources Research*, **45** (6), 1–18, doi:10.1029/2008WR007255.
- Foglia, L., S. W. Mehl, M. C. Hill, and P. Burlando, 2013: Evaluating model structure adequacy: The case of the Maggia Valley groundwater system, southern Switzerland. *Water Resources Research*, **49** (1), 260–282, doi:10.1029/2011WR011779.
- Forster, F., 1989: Einfluss der bewaldung auf die komponenten der wasserbilanz. *Informationsbericht 4/89 des Bayerischen Landes-amtes fur Wasserwirtschaft, München*, 47 – 63.
- Fuhrer, J., and K. Jasper, 2012: Demand and Supply of Water for Agriculture: Influence of Topography and Climate in Pre-Alpine, Mesoscale Catchments. *Natural Resources*, **03** (03), 145–155, doi:10.4236/nr.2012.33019.
- Fundel, F., S. Jörg-Hess, and M. Zappa, 2013: Monthly hydrometeorological ensemble prediction of streamflow droughts and corresponding drought indices. *Hydrology and Earth System Sciences*, **17** (1), 395–407, doi:10.5194/hess-17-395-2013.
- Fundel, F., and M. Zappa, 2011: Hydrological ensemble forecasting in mesoscale catchments: Sensitivity to initial conditions and value of reforecasts. *Water Resources Research*, **47** (9), 1–15, doi:10.1029/2010WR009996.
- García Hernández, J., J.-L. Boillat, F. Jordan, and B. Hingray, 2009: La prévision hydrométéorologique sur le bassin versant du Rhône en amont du Léman. *La Houille Blanche*, (5), 61–70, doi:10.1051/lhb/2009057.

- Giordani, A., M. Zappa, and M. W. Rotach, 2020: Estimating ensemble flood forecasts' uncertainty: A novel "peak-box" approach for detecting multiple peak-flow events. *Atmosphere*, **11** (1), 1–17, doi:10.3390/ATMOS11010002.
- Girons Lopez, M., and J. Seibert, 2016: Influence of hydro-meteorological data spatial aggregation on streamflow modelling. *Journal of Hydrology*, **541**, 1212–1220, doi:10.1016/j.jhydrol.2016.08.026.
- Griessinger, N., J. Seibert, J. Magnusson, and T. Jonas, 2016: Assessing the benefit of snow data assimilation for runoff modeling in Alpine catchments. *Hydrology and Earth System Sciences*, **20** (9), 3895–3905, doi:10.5194/hess-20-3895-2016.
- Gurtz, J., M. Zappa, K. Jasper, H. Lang, M. Verbunt, A. Badoux, and T. Vitvar, 2003: A comparative study in modelling runoff and its components in two mountainous catchments. *Hydrological Processes*, **17** (2), 297–311, doi:10.1002/hyp.1125.
- Hager, W. H., 1984: A simplified hydrological rainfall-runoff model. *Journal of Hydrology*, **74** (1), 151–170.
- Hakala, K., N. Addor, T. Gobbe, J. Ruffieux, and J. Seibert, 2020: Risks and opportunities for a Swiss hydroelectricity company in a changing climate. *Hydrology and Earth System Sciences*, **24** (7), 3815–3833, doi:10.5194/hess-24-3815-2020.
- Hakala, K., N. Addor, and J. Seibert, 2018: Hydrological modeling to evaluate climate model simulations and their bias correction. *Journal of Hydrometeorology*, **19** (8), 1321–1337, doi:10.1175/JHM-D-17-0189.1.
- Hegg, C., B. W. McArdell, and A. Badoux, 2006: One hundred years of mountain hydrology in Switzerland by the wsl. *Hydrological Processes*, **20** (2), 371–376.
- Hindshaw, R. S., and Coauthors, 2011: Hydrological control of stream water chemistry in a glacial catchment (Damma Glacier, Switzerland). *Chemical Geology*, **285** (1-4), 215–230, doi:10.1016/j.chemgeo.2011.04.012.
- Hingray, B., B. Schaefli, A. Mezghani, and Y. Hamdi, 2010: Signature-based model calibration for hydrological prediction in mesoscale Alpine catchments. *Hydrological Sciences Journal*, **55** (6), 1002–1016, doi:10.1080/02626667.2010.505572.
- Hoeck, E., 1952: Der einfluss der strahlung und der temperatur auf den schmelzprozess der schneedecke. *Beitrage zur Geologie der Schweiz, Geotechnische Serie, Hydrologie, Lieferung 8.*, Kummerly und Frey AG, Bern, 36.
- Horton, P., B. Schaefli, A. Mezghani, B. Hingray, and A. Musy, 2006: Assessment of climate-change impacts on alpine discharge regimes with climate model uncertainty. *Hydrological Processes*, **20** (10), 2091–2109, doi:10.1002/hyp.6197.
- Hottelet, C., L. Braun, C. Leibundgut, and A. Rieg, 1993: Simulation of snowpack and discharge in an alpine karst basin. *Snow and Glacier Hydrologie, Proceedings of the Kathmandu Symposium, Nov. 1992, IAHS Publ. no 218.*
- Iorgulescu, I., and J. P. Jordan, 1994: Validation of topmodel on a small swiss catchment. *Journal of Hydrology*, **159** (1-4), 255–273.
- Jasper, K., P. Calanca, and J. Fuhrer, 2006: Changes in summertime soil water patterns in complex terrain due to climatic change. *Journal of Hydrology*, **327** (3-4), 550–563, doi:10.1016/j.jhydrol.2005.11.061.
- Jasper, K., P. Calanca, D. Gyalistras, and J. Fuhrer, 2004: Differential impacts of climate change on the hydrology of two alpine river basins. *Climate Research*, **26**, 113–129, doi:10.3354/cr026113.
- Jasper, K., J. Gurtz, and H. Lang, 2002: Advanced flood forecasting in Alpine watersheds by coupling meteorological observations and forecasts with a distributed hydrological model. *Journal of Hydrology*, **267** (1-2), 40–52, doi:10.1016/S0022-1694(02)00138-5.

- Jasper, K., and P. Kaufmann, 2003: Coupled runoff simulations as validation tools for atmospheric models at the regional scale. *Quarterly Journal of the Royal Meteorological Society*, **129** (588 PART B), 673–692, doi:10.1256/qj.02.26.
- Jaton, J.-F., 1982: Contribution à l'étude des relations pluies-débits dans les petits bassins versants ruraux. Lausanne, EPFL, doi:10.5075/epfl-thesis-453.
- Jaun, S., and B. Ahrens, 2009: Evaluation of a probabilistic hydrometeorological forecast system. *Hydrology and Earth System Sciences*, **13** (7), 1031–1043, doi:10.5194/hess-13-1031-2009.
- Jaun, S., B. Ahrens, A. Walser, T. Ewen, and C. Schär, 2008: A probabilistic view on the August 2005 floods in the upper Rhine catchment. *Natural Hazards and Earth System Sciences*, **8** (2), 281–291, doi:10.5194/nhess-8-281-2008.
- Jeger, C., 1942: Zum beschleunigten ausbau unserer wasserkraft. *Schweizerische Bauzeitung*, **119/120** (4).
- Jenicek, M., J. Seibert, and M. Staudinger, 2018: Modeling of Future Changes in Seasonal Snowpack and Impacts on Summer Low Flows in Alpine Catchments. *Water Resources Research*, **54** (1), 538–556, doi:10.1002/2017WR021648.
- Jensen, H., and H. Lang, 1973: Forecasting discharge from a glaciated basin in the swiss alps. *Role of Snow and Ice in Hydrology, Proceedings of symposia held at Banff, September 1972, IAHS Publ. no 107*, **2**, 1047–1057.
- Jordan, F., J.-L. Boillat, and A. Schleiss, 2010: Prévision et gestion des crues du Rhône supérieur par l'exploitation optimale des retenues alpines. *La Houille Blanche*, (5), 91–102, doi:10.1051/lhb/2010060.
- Jordan, J. P., 1990: Importance of the experimental basin for conceptual distributed models. *Hydrological research basins and the environment: proceedings of the International Conference, 24-28 September 1990 at Wageningen/The Hague*, C. Hooghart, C. Posthumus, and P. Warmerdam, Eds.
- Jordan, J. P., P. Bathurst, and A. Musy, 1987: Modélisation à base physique sur un bassin versant rural en climat tempéré. *Conférence IAHS, Vancouver, 1987*.
- Jörg-Hess, S., N. Griessinger, and M. Zappa, 2015a: Probabilistic forecasts of snow water equivalent and runoff in mountainous areas. *Journal of Hydrometeorology*, **16** (5), 2169–2186, doi:10.1175/JHM-D-14-0193.1.
- Jörg-Hess, S., S. B. Kempf, F. Fundel, and M. Zappa, 2015b: The benefit of climatological and calibrated reforecast data for simulating hydrological droughts in Switzerland. *Meteorological Applications*, **22** (3), 444–458, doi:10.1002/met.1474.
- Junghans, N., J. Cullmann, and M. Huss, 2011: Evaluating the effect of snow and ice melt in an Alpine headwater catchment and further downstream in the River Rhine. *Hydrological Sciences Journal*, **56** (6), 981–993, doi:10.1080/02626667.2011.595372.
- Junker, J., F. U. Heimann, C. Hauer, J. M. Turowski, D. Rickenmann, M. Zappa, and A. Peter, 2015: Assessing the impact of climate change on brown trout (*Salmo trutta fario*) recruitment. *Hydrobiologia*, **751** (1), 1–21, doi:10.1007/s10750-014-2073-4.
- Keller, H. M., 1970: Factors affecting water quality of small mountain catchments. *Journal of Hydrology: New Zealand*, **9** (2), 133–141.
- Keller, H. M., 1979: Model comparison to estimate consumptive use. *Developments in Agricultural and Managed Forest Ecology*, S. Halldin, Ed., Vol. 9, Elsevier, 225–235.
- Keller, H. M., 1985: Die hydrologische forschung an der eafv seit 1889. *Mitteilung Eidgenössische Forschungsanstalt Wald Schnee Landschaft*, **61**, 886–904.
- Keller, H. M., 1989: Seasonal characteristics of flow regime and water quality in small mountainous basins. *Conference on Headwater Control. Proceedings IUFRO and World Association of Soil and Water Conservation, Prag, Nov. 1989,*, Vol. 1, 122–129.

- Keller, H. M., and F. Forster, 1991: Simulating soil moisture and runoff components to estimate variability of streamflow chemistry. *Hydrological Basis of Ecologically Sound Management of Soil and Groundwater (Proceedings of the Vienna Symposium, August 1991)*. IAHS Publ. no. 202, 143–151.
- Keller, L., O. Rössler, O. Martius, and R. Weingartner, 2019a: Comparison of scenario-neutral approaches for estimation of climate change impacts on flood characteristics. *Hydrological Processes*, **33** (4), 535–550, doi:10.1002/hyp.13341.
- Keller, L., A. P. Zischg, M. Mosimann, O. Rössler, R. Weingartner, and O. Martius, 2019b: Large ensemble flood loss modelling and uncertainty assessment for future climate conditions for a Swiss pre-alpine catchment. *Science of the Total Environment*, **693**, doi:10.1016/j.scitotenv.2019.07.206.
- Kleinn, J., C. Frei, J. Gurtz, D. Lüthi, P. L. Vidale, and C. Schär, 2005: Hydrologic simulations in the Rhine basin driven by a regional climate model. *Journal of Geophysical Research D: Atmospheres*, **110** (4), 1–18, doi:10.1029/2004JD005143.
- Kobierska, F., T. Jonas, J. Magnusson, M. Zappa, M. Bavay, T. Bosshard, F. Paul, and S. M. Bernasconi, 2011: Climate change effects on snow melt and discharge of a partly glacierized watershed in Central Switzerland (SoilTrec Critical Zone Observatory). *Applied Geochemistry*, **26** (SUPPL.), S60–S62, doi:10.1016/j.apgeochem.2011.03.029.
- Kobierska, F., T. Jonas, M. Zappa, M. Bavay, J. Magnusson, and S. M. Bernasconi, 2013: Future runoff from a partly glacierized watershed in Central Switzerland: A two-model approach. *Advances in Water Resources*, **55**, 204–214, doi:10.1016/j.advwatres.2012.07.024.
- Konz, M., M. Chiari, S. Rimkus, J. M. Turowski, P. Molnar, D. Rickenmann, and P. Burlando, 2011: Sediment transport modelling in a distributed physically based hydrological catchment model. *Hydrology and Earth System Sciences*, **15** (9), 2821–2837, doi:10.5194/hess-15-2821-2011.
- Köplin, N., O. Röbber, B. Schädler, and R. Weingartner, 2014a: Robust estimates of climate-induced hydrological change in a temperate mountainous region. *Climatic Change*, **122** (1-2), 171–184, doi:10.1007/s10584-013-1015-x.
- Köplin, N., B. Schädler, D. Viviroli, and R. Weingartner, 2012: Relating climate change signals and physiographic catchment properties to clustered hydrological response types. *Hydrology and Earth System Sciences*, **16** (7), 2267–2283, doi:10.5194/hess-16-2267-2012.
- Köplin, N., B. Schädler, D. Viviroli, and R. Weingartner, 2013: The importance of glacier and forest change in hydrological climate-impact studies. *Hydrology and Earth System Sciences*, **17** (2), 619–635, doi:10.5194/hess-17-619-2013.
- Köplin, N., B. Schädler, D. Viviroli, and R. Weingartner, 2014b: Seasonality and magnitude of floods in Switzerland under future climate change. *Hydrological Processes*, **28** (4), 2567–2578, doi:10.1002/hyp.9757.
- Köplin, N., D. Viviroli, B. Schädler, and R. Weingartner, 2010: How does climate change affect mesoscale catchments in Switzerland? - A framework for a comprehensive assessment. *Advances in Geosciences*, **27**, 111–119, doi:10.5194/adgeo-27-111-2010.
- Liechti, K., M. Zappa, F. Fundel, and U. Germann, 2013: Probabilistic evaluation of ensemble discharge nowcasts in two nested Alpine basins prone to flash floods. *Hydrological Processes*, **27** (1), 5–17, doi:10.1002/hyp.9458.
- Lugiez, G., P. Kasser, H. Jensen, and P. Guillot, 1969: La prevision des debits du rhin - un exemple de collaboration internationale en hydrologie; forecast of the discharge for river rhine - an example of international cooperation in hydrology. *La Houille Blanche*, **7**, 733–746.
- Martinec, J., 1970: Study of snowmelt runoff process in two representative watersheds with different elevation range. *Symposium on the Results of Research in Representative and Experimental Basins (Wellington, 1970)*, IAHS Publ. no. 96., IAHS, 29–39.
- Martinec, J., 1975: Snowmelt-runoff model for streamflow forecasts. *Nordic Hydrology*, **6** (3), 145–154.

- Marty, C., S. Schlögl, M. Bavay, and M. Lehning, 2017: How much can we save ? Impact of different emission scenarios on future snow cover in the Alps . *The Cryosphere*, **1999** (1), 1–37, doi:10.5194/tc-11-517-2017.
- Mastrotheodoros, T., C. Pappas, P. Molnar, P. Burlando, P. Hadjidoukas, and S. Fatichi, 2019: Ecohydrological dynamics in the Alps: Insights from a modelling analysis of the spatial variability. *Ecohydrology*, **12** (1), 1–18, doi:10.1002/eco.2054.
- Melsen, L., A. Teuling, P. Torfs, M. Zappa, N. Mizukami, M. Clark, and R. Uijlenhoet, 2016: Representation of spatial and temporal variability in large-domain hydrological models: Case study for a mesoscale pre-Alpine basin. *Hydrology and Earth System Sciences*, **20** (6), 2207–2226, doi:10.5194/hess-20-2207-2016.
- Melsen, L. A., A. J. Teuling, P. J. Torfs, M. Zappa, N. Mizukami, P. A. Mendoza, M. P. Clark, and R. Uijlenhoet, 2019: Subjective modeling decisions can significantly impact the simulation of flood and drought events. *Journal of Hydrology*, **568** (September 2017), 1093–1104, doi:10.1016/j.jhydrol.2018.11.046.
- Meyer, J., I. Kohn, K. Stahl, K. Hakala, J. Seibert, and A. J. Cannon, 2019: Effects of univariate and multivariate bias correction on hydrological impact projections in alpine catchments. *Hydrology and Earth System Sciences*, **23** (3), 1339–1354, doi:10.5194/hess-23-1339-2019.
- Middelkoop, H., and Coauthors, 2001: Impact of climate change on hydrological regimes and water resources management in the Rhine basin. *Climatic Change*, **49** (1-2), 105–128, doi:10.1023/A:1010784727448.
- Milano, M., E. Reynard, N. Bosshard, and R. Weingartner, 2015a: Simulating future trends in hydrological regimes in Western Switzerland. *Journal of Hydrology: Regional Studies*, **4**, 748–761, doi:10.1016/j.ejrh.2015.10.010.
- Milano, M., E. Reynard, N. Köplin, and R. Weingartner, 2015b: Climatic and anthropogenic changes in Western Switzerland: Impacts on water stress. *Science of the Total Environment*, **536**, 12–24, doi:10.1016/j.scitotenv.2015.07.049.
- Monhart, S., M. Zappa, C. Spirig, C. Schär, and K. Bogner, 2019: Subseasonal hydrometeorological ensemble predictions in small- and medium-sized mountainous catchments: Benefits of the NWP approach. *Hydrology and Earth System Sciences*, **23** (1), 493–513, doi:10.5194/hess-23-493-2019.
- Müller-Thomy, H., and A. E. Sikorska-Senoner, 2019: Does the complexity in temporal precipitation disaggregation matter for a lumped hydrological model? *Hydrological Sciences Journal*, **64** (12), 1453–1471, doi:10.1080/02626667.2019.1638926.
- Naef, F., 1974: Zur berechnung des abflusses aus meteorologischen grössen mittels mathematischer modelle. *Schweizerische Bauzeitung*, **92** (43).
- Naef, F., 1977: Ein vergleich von mathematischen niederschlag-abfluss-modellen. Ph.D. thesis, ETH Zürich.
- Orth, R., M. Staudinger, S. I. Seneviratne, J. Seibert, and M. Zappa, 2015: Does model performance improve with complexity? A case study with three hydrological models. *Journal of Hydrology*, **523**, 147–159, doi:10.1016/j.jhydrol.2015.01.044.
- Pappas, C., S. Fatichi, S. Rimkus, P. Burlando, and M. O. Huber, 2015: The role of local-scale heterogeneities in terrestrial ecosystem modeling. *Journal of Geophysical Research: Biogeosciences*, **120** (2), 341–360, doi:10.1002/2014JG002735.
- Paschalis, A., S. Fatichi, P. Molnar, S. Rimkus, and P. Burlando, 2014: On the effects of small scale space-time variability of rainfall on basin flood response. *Journal of Hydrology*, **514**, 313–327, doi:10.1016/j.jhydrol.2014.04.014.
- Perret, P., 2001: Beitrag zur geschichte der gewässerforschung in der schweiz. 5.
- Rahman, K., A. G. da Silva, E. M. Tejada, A. Gobiet, M. Beniston, and A. Lehmann, 2015: An independent and combined effect analysis of land use and climate change in the upper Rhone River watershed, Switzerland. *Applied Geography*, **63**, 264–272, doi:10.1016/j.apgeog.2015.06.021.



- Rahman, K., C. Etienne, A. Gago-Silva, C. Maringanti, M. Beniston, and A. Lehmann, 2014: Streamflow response to regional climate model output in the mountainous watershed: a case study from the Swiss Alps. *Environmental Earth Sciences*, **72** (11), 4357–4369, doi:10.1007/s12665-014-3336-0.
- Rahman, K., C. Maringanti, M. Beniston, F. Widmer, K. Abbaspour, and A. Lehmann, 2013: Streamflow Modeling in a Highly Managed Mountainous Glacier Watershed Using SWAT: The Upper Rhone River Watershed Case in Switzerland. *Water Resources Management*, **27** (2), 323–339, doi:10.1007/s11269-012-0188-9.
- Raymond Pralong, M., J. M. Turowski, D. Rickenmann, and M. Zappa, 2015: Climate change impacts on bedload transport in alpine drainage basins with hydropower exploitation. *Earth Surface Processes and Landforms*, **40** (12), 1587–1599, doi:10.1002/esp.3737.
- Rössler, O., and S. Brönnimann, 2018: The effect of the Tambora eruption on Swiss flood generation in 1816/1817. *Science of the Total Environment*, **627**, 1218–1227, doi:10.1016/j.scitotenv.2018.01.254.
- Rössler, O., B. Dieckrüger, and J. Löffler, 2012: Potential drought stress in a Swiss mountain catchment - Ensemble forecasting of high mountain soil moisture reveals a drastic decrease, despite major uncertainties. *Water Resources Research*, **48** (4), 1–19, doi:10.1029/2011WR011188.
- Rössler, O., P. Froidevaux, U. Börst, R. Rickli, O. Martius, and R. Weingartner, 2014: Retrospective analysis of a nonforecasted rain-on-snow flood in the Alps-A matter of model limitations or unpredictable nature? *Hydrology and Earth System Sciences*, **18** (6), 2265–2285, doi:10.5194/hess-18-2265-2014.
- Rössler, O., S. Kotlarski, A. M. Fischer, D. Keller, M. Liniger, and R. Weingartner, 2019: Evaluating the added value of the new Swiss climate scenarios for hydrology: An example from the Thur catchment. *Climate Services*, **13** (January), 1–13, doi:10.1016/j.cliser.2019.01.001.
- Rößler, O., and J. Löffler, 2010: Potentials and limitations of modelling spatio-temporal patterns of soil moisture in a high mountain catchment using WaSiM-ETH. *Hydrological Processes*, **24** (15), 2182–2196, doi:10.1002/hyp.7663.
- Rottler, E., A. Bronstert, G. Bürger, and O. Rakovec, 2020: Projected changes in Rhine River flood seasonality under global warming. *Hydrol. Earth Syst. Sci. Discuss.*, (November), 1–25.
- Sautier, J.-L., and J.-W. Delleur, 1980: Calibration et analyse de sensibilité du modèle de simulation continue de l'écoulement STORM. *La Houille Blanche*, (4-5), 339–344.
- Schaefli, B., 2015: Projecting hydropower production under future climates: a guide for decision-makers and modelers to interpret and design climate change impact assessments. *WIREs Water*, **2** (4), 271–289.
- Schaefli, B., 2016: Snow hydrology signatures for model identification within a limits-of-acceptability approach. *Hydrological Processes*, **30** (22), 4019–4035, doi:10.1002/hyp.10972.
- Schaefli, B., B. Hingray, and A. Musy, 2007a: Climate change and hydropower production in the Swiss Alps: quantification of potential impacts and related modelling uncertainties. *Hydrology and Earth System Sciences*, **11** (3), 1191–1205, doi:10.5194/hess-11-1191-2007.
- Schaefli, B., and M. Huss, 2011: Integrating point glacier mass balance observations into hydrologic model identification. *Hydrology and Earth System Sciences*, **15** (4), 1227–1241, doi:10.5194/hess-15-1227-2011.
- Schaefli, B., D. B. Talamba, and A. Musy, 2007b: Quantifying hydrological modeling errors through a mixture of normal distributions. *Journal of Hydrology*, **332** (3-4), 303–315, doi:10.1016/j.jhydrol.2006.07.005.
- Schaefli, B., and E. Zehe, 2009: Hydrological model performance and parameter estimation in the wavelet-domain. *Hydrology and Earth System Sciences*, **13** (10), 1921–1936, doi:10.5194/hess-13-1921-2009.
- Shakoor, A., A. Burri, M. Bavay, N. Ejaz, A. R. Ghumman, F. Comola, and M. Lehning, 2018: Hydrological response of two high altitude Swiss catchments to energy balance and temperature index melt schemes. *Polar Science*, **17** (June), 1–12, doi:10.1016/j.polar.2018.06.007.

- Sikorska, A., D. Viviroli, and J. Seibert, 2017: Effective precipitation duration for runoff peaks based on catchment modelling. *Journal of Hydrology*, **556**, 510–522, doi:10.1016/j.jhydrol.2017.11.028.
- Sikorska, A. E., and J. Seibert, 2016: Value of different precipitation data for flood prediction in an alpine catchment: A Bayesian approach. *Journal of Hydrology*, **556**, 961–971, doi:10.1016/j.jhydrol.2016.06.031.
- Sikorska, A. E., and J. Seibert, 2018: Appropriate temporal resolution of precipitation data for discharge modelling in pre-alpine catchments. *Hydrological Sciences Journal*, **63** (1), 1–16, doi:10.1080/02626667.2017.1410279.
- Sikorska-Senoner, A., B. Schaeffli, and J. Seibert, 2020: Downsizing parameter ensembles for simulations of extreme floods. *Natural Hazards and Earth System Sciences*, (March), 1–38, doi:10.5194/nhess-2020-79.
- Speich, M. J., L. Bernhard, A. J. Teuling, and M. Zappa, 2015: Application of bivariate mapping for hydrological classification and analysis of temporal change and scale effects in Switzerland. *Journal of Hydrology*, **523**, 804–821, doi:10.1016/j.jhydrol.2015.01.086.
- Staudinger, M., and J. Seibert, 2014: Predictability of low flow - An assessment with simulation experiments. *Journal of Hydrology*, **519** (PB), 1383–1393, doi:10.1016/j.jhydrol.2014.08.061.
- Staudinger, M., K. Stahl, and J. Seibert, 2014: A drought index accounting for snow. *Water Resources Research*, **50** (10), 7861–7872, doi:10.1002/2013WR015143.
- Staudinger, M., M. Stoelzle, S. Seeger, J. Seibert, M. Weiler, and K. Stahl, 2017: Catchment water storage variation with elevation. *Hydrological Processes*, **31** (11), 2000–2015, doi:10.1002/hyp.11158.
- Staudinger, M., M. Weiler, and J. Seibert, 2015: Quantifying sensitivity to droughts-an experimental modeling approach. *Hydrology and Earth System Sciences*, **19** (3), 1371–1384, doi:10.5194/hess-19-1371-2015.
- Stucki, P., and Coauthors, 2018: Reconstruction and simulation of an extreme flood event in the Lago Maggiore catchment in 1868. *Natural Hazards and Earth System Sciences*, **18** (10), 2717–2739, doi:10.5194/nhess-18-2717-2018.
- Terrier, S., M. Bieri, F. Jordan, and A. J. Schleiss, 2015: Impact du retrait glaciaire et adaptation du potentiel hydroélectrique dans les Alpes suisses. *Houille Blanche*, (1), 93–101, doi:10.1051/lhb/2015012.
- Thielen, J., J. Bartholmes, M. H. Ramos, and A. De Roo, 2009: The European flood alert system - part 1: Concept and development. *Hydrology and Earth System Sciences*, **13** (2), 125–140, doi:10.5194/hess-13-125-2009.
- Thornton, J., T. Brauchli, G. Mariethoz, and P. Brunner, 2021: Efficient multi-objective calibration and uncertainty analysis of distributed snow simulations in rugged alpine terrain. *Journal of Hydrology*, doi:10.1016/j.jhydrol.2021.126241.
- Tobin, C., L. Nicotina, M. B. Parlange, A. Berne, and A. Rinaldo, 2011: Improved interpolation of meteorological forcings for hydrologic applications in a Swiss Alpine region. *Journal of Hydrology*, **401** (1-2), 77–89, doi:10.1016/j.jhydrol.2011.02.010.
- Tobin, C., A. Rinaldo, and B. Schaeffli, 2012: Snowfall limit forecasts and hydrological modeling. *Journal of Hydrometeorology*, **13** (5), 1507–1519, doi:10.1175/JHM-D-11-0147.1.
- Tockner, K., A. Wüest, and S. Findlay, 2009: Aquatic sciences celebrates its 20th anniversary. *Aquatic Sciences*, **71** (1), 1–2.
- Uhlmann, B., F. Jordan, and M. Beniston, 2013: Modelling runoff in a Swiss glacierized catchment-part I: Methodology and application in the Findelen basin under a long-lasting stable climate. *International Journal of Climatology*, **33** (5), 1293–1300, doi:10.1002/joc.3501.
- Van Osnabrugge, B., R. Uijlenhoet, and A. Weerts, 2019: Contribution of potential evaporation forecasts to 10-day streamflow forecast skill for the Rhine River. *Hydrology and Earth System Sciences*, **23** (3), 1453–1467, doi:10.5194/hess-23-1453-2019.

- van Osnabrugge, B., A. H. Weerts, and R. Uijlenhoet, 2017: genRE: A Method to Extend Gridded Precipitation Climatology Data Sets in Near Real-Time for Hydrological Forecasting Purposes. *Water Resources Research*, **53** (11), 9284–9303, doi:10.1002/2017WR021201.
- Verbunt, M., M. Groot Zwaafink, and J. Gurtz, 2005: The hydrologic impact of land cover changes and hydropower stations in the Alpine Rhine basin. *Ecological Modelling*, **187** (1 SPEC. ISS.), 71–84, doi:10.1016/j.ecolmodel.2005.01.027.
- Verbunt, M., J. Gurtz, K. Jasper, H. Lang, P. Warmerdam, and M. Zappa, 2003: The hydrological role of snow and glaciers in alpine river basins and their distributed modeling. *Journal of Hydrology*, **282** (1-4), 36–55, doi:10.1016/S0022-1694(03)00251-8.
- Verbunt, M., A. Walser, J. Gurtz, A. Montani, and C. Schär, 2007: Probabilistic flood forecasting with a limited-area ensemble prediction system: Selected case studies. *Journal of Hydrometeorology*, **8** (4), 897–909, doi:10.1175/JHM594.1.
- Verbunt, M., M. Zappa, J. Gurtz, and P. Kaufmann, 2006: Verification of a coupled hydrometeorological modelling approach for alpine tributaries in the Rhine basin. *Journal of Hydrology*, **324** (1-4), 224–238, doi:10.1016/j.jhydrol.2005.09.036.
- Viviroli, D., H. Mittelbach, J. Gurtz, and R. Weingartner, 2009a: Continuous simulation for flood estimation in ungauged mesoscale catchments of Switzerland – Part II: Parameter regionalisation and flood estimation results. *Journal of Hydrology*, **377** (1-2), 208–225, doi:10.1016/j.jhydrol.2009.08.022.
- Viviroli, D., and J. Seibert, 2015: Can a regionalized model parameterisation be improved with a limited number of runoff measurements? *Journal of Hydrology*, **529** (P1), 49–61, doi:10.1016/j.jhydrol.2015.07.009.
- Viviroli, D., M. Zappa, J. Schwanbeck, J. Gurtz, and R. Weingartner, 2009b: Continuous simulation for flood estimation in ungauged mesoscale catchments of Switzerland – Part I: Modelling framework and calibration results. *Journal of Hydrology*, **377** (1-2), 191–207, doi:10.1016/j.jhydrol.2009.08.023.
- Wanders, N., S. Thober, R. Kumar, M. Pan, J. Sheffield, L. Samaniego, and E. F. Wood, 2019: Development and evaluation of a pan-European multimodel seasonal hydrological forecasting system. *Journal of Hydrometeorology*, **20** (1), 99–115, doi:10.1175/JHM-D-18-0040.1.
- Westaway, R., 2000: Modelling the potential effects of climate change on the grande dixence hydroelectricity scheme, switzerland. *Journal of the Chartered Institution of Water and Environmental Management*, **14** (3), 179–185.
- Westerberg, I. K., A. E. Sikorska-Senoner, D. Viviroli, M. Vis, and J. Seibert, 2020: Hydrological model calibration with uncertain discharge data. *Hydrological Sciences Journal*, **00** (00), 1–16, doi:10.1080/02626667.2020.1735638.
- Wever, N., F. Comola, M. Bavay, and M. Lehning, 2017: Simulating the influence of snow surface processes on soil moisture dynamics and streamflow generation in an alpine catchment. *Hydrology and Earth System Sciences*, **21** (8), 4053–4071, doi:10.5194/hess-21-4053-2017.
- Wisner, P., and J. P. Jordan, 1983: Description du modèle otthymo et exemples d’application. igr no 172. Tech. rep., Ecole Polytechnique Fédérale de Lausanne, Switzerland.
- Zappa, M., 2008: Objective quantitative spatial verification of distributed snow cover simulations - An experiment for the whole of Switzerland. *Hydrological Sciences Journal*, **53** (1), 179–191, doi:10.1623/hysj.53.1.179.
- Zappa, M., and J. Gurtz, 2003: Simulation of soil moisture and evapotranspiration in a soil profile during the 1999 MAP-Riviera Campaign. *Hydrology and Earth System Sciences*, **7** (6), 903–919, doi:10.5194/hess-7-903-2003.
- Zappa, M., S. Jaun, U. Germann, A. Walser, and F. Fundel, 2011: Superposition of three sources of uncertainties in operational flood forecasting chains. *Atmospheric Research*, **100** (2-3), 246–262, doi:10.1016/j.atmosres.2010.12.005.

- Zappa, M., and C. Kan, 2007: Extreme heat and runoff extremes in the Swiss Alps. *Natural Hazards and Earth System Sciences*, **7** (3), 375–389, doi:10.5194/nhess-7-375-2007.
- Zappa, M., and Coauthors, 2008: MAP D-PHASE: real-time demonstration of hydrological ensemble prediction systems. *Atmospheric Science Letters*, **9** (2), 80–87, doi:10.1002/asl.183.
- Zarrineh, N., K. C. Abbaspour, and A. Holzkämper, 2020: Integrated assessment of climate change impacts on multiple ecosystem services in Western Switzerland. *Science of the Total Environment*, **708**, 135–212, doi:10.1016/j.scitotenv.2019.135212.
- Zarrineh, N., K. C. Abbaspour, A. van Griensven, B. Jeangros, and A. Holzkämper, 2018: Model-based evaluation of land management strategies with regard to multiple ecosystem services. *Sustainability (Switzerland)*, **10** (11), doi:10.3390/su10113844.
- Zeimetz, F., B. Schaefli, G. Artigue, J. García Hernández, and A. J. Schleiss, 2017: Relevance of the correlation between precipitation and the 0 C isothermal altitude for extreme flood estimation. *Journal of Hydrology*, **551**, 177–187, doi:10.1016/j.jhydrol.2017.05.022.
- Zeimetz, F., B. Schaefli, G. Artigue, J. G. Hernández, and A. J. Schleiss, 2018a: New approach to identifying critical initial conditions for extreme flood simulations in a semicontinuous simulation framework. *Journal of Hydrologic Engineering*, **23** (8), 1–9, doi:10.1061/(ASCE)HE.1943-5584.0001652.
- Zeimetz, F., B. Schaefli, G. Artigue, J. G. Hernández, and A. J. Schleiss, 2018b: Swiss Rainfall Mass Curves and their Influence on Extreme Flood Simulation. *Water Resources Management*, **32** (8), 2625–2638, doi:10.1007/s11269-018-1948-y.
- Zierl, B., and H. Bugmann, 2005: Global change impacts on hydrological processes in Alpine catchments. *Water Resources Research*, **41** (2), W02028, doi:10.1029/2004WR003447.
- Zischg, A. P., G. Felder, R. Weingartner, N. Quinn, G. Coxon, J. Neal, J. Freer, and P. Bates, 2018: Effects of variability in probable maximum precipitation patterns on flood losses. *Hydrology and Earth System Sciences*, **22** (5), 2759–2773, doi:10.5194/hess-22-2759-2018.