

A data assimilation framework to constrain the driving processes of anthropogenically induced subsidence

Thibault Candela¹, A.G. Chitu¹, E. Peters¹, M. Pluymaekers¹, D. Hegen¹, Kay. Koster¹, Peter A. Fokker^{1,2}

¹ TNO, Geological Survey of the Netherlands, Utrecht, The Netherlands

² Utrecht University, department of geosciences, Utrecht, The Netherlands

PRE-PRINT WARNING

This manuscript has been submitted for publication in *Engineering Geology*. Subsequent versions of this manuscript may have different content. If accepted, the final version of this manuscript will be available via the *Peer-reviewed Publication DOI* link printed on this webpage.

Comments and questions are welcomed. Please contact the first author (Thibault Candela) via email (thibault.candela@tno.nl).

ABSTRACT

Surface movement can be induced by many human subsurface activities: natural gas production, geothermal heat extraction, ground water extraction, phreatic groundwater level lowering, storage of natural gas and CO₂. In this manuscript, we focus on subsidence caused by gas production. While geological interpretations, seismic campaigns and flow modeling often provide a relatively rich pre-existing knowledge, understanding of the driving mechanisms for induced subsidence is still poor and forecasts are often very uncertain. This is related to the multiple poorly constrained models that translate gas production to ground surface displacements. We have therefore devised and deployed an integrated workflow, coupling fast forward models and honoring uncertainties in our prior knowledge and in our model choices. We run ensemble-smoother algorithms to assimilate the ground-surface displacements and we demonstrate that the reservoir-rock compaction process driving subsidence can be effectively identified and constrained. This is crucial to build confidence in our subsidence forecasts. The predictive power of the integrated workflow is demonstrated with an ensemble of synthetic but complex reservoir flow simulations mimicking all the characteristics and uncertainties representative for real gas fields in the north of the Netherlands.

1. INTRODUCTION

Various types of energy-related anthropogenic subsurface activities, such as reservoir gas production, geothermal heat extraction, ground water extraction, storage of natural gas or CO₂, can lead to surface movement (Zoback 2007). The relatively rich pre-existing knowledge of the underground around anthropogenic subsurface activities (e.g. through geological interpretations of seismic campaigns, borehole analysis, and reservoir flow modelling, e.g. (NAM 2016) for the Groningen gas field, the Netherlands) could make one think that the driving physical processes of anthropogenically-induced subsidence are well constrained. This is unfortunately not the case and the contribution of multiple driving physical processes is still highly debated (e.g. Mossop and Segall 1999; van Thienen-Visser et al. 2015a; Fokker et al. 2016).

In this contribution we focus on one instance of anthropogenic subsurface activities which can potentially lead to subsidence: reservoir gas production. During the extraction of natural gas from a gas field, the reservoir pressure decreases, leading to compaction. This reduction in volume at reservoir depth may induce surface subsidence (Doornhof 1992), with consequences for the environment and for human activities (e.g. van Thienen-Visser et al. 2015b; Simeoni et al. 2017). The consequences of reservoir production and its changes call for subsidence forecasting approaches. However, the link between reservoir production and subsidence is non-trivial. Some gas fields in the Netherlands and elsewhere have shown a non-linearity between pressure depletion and subsidence, or even a delay between the start of production and the onset of subsidence and a continuation of subsidence even after production had stopped (van Thienen-Visser et al. 2015a; Hettema et al. 2002). This non-linear relationship between reservoir production and subsidence has been explained by the potential delay between reservoir depletion and compaction and multiple reservoir-compaction models have been already developed (e.g. Mossop 2012; De Waal 1986; NAM 2015; Pijenburg et al. 2018, 2019). An efficient procedure to discriminate which compaction model is the most likely to explain the subsidence observations is a crucial step to gain confidence in our subsidence predictions.

An important step towards the identification of the driving processes of induced subsidence is to properly assimilate the observations and to constrain the pre-existing geological, hydrological, geomechanical models and their inherent uncertainties. As in many scientific realms where uncertainties are abundant, like weather forecasting and hydrology, a probabilistic ensemble-based approach can be appropriate and fruitful (e.g. Reggiani and Weerts 2008; Jaynes 2003, Evensen 2003; Emerick and Reynolds 2013a,b). An “ensemble” here implies that we build multiple model realizations, based on the possible choices of processes and subsurface parameters.

Ensemble-based approaches for inversion of surface subsidence have already been developed in the past (see e.g. [Fokker et al. 2012](#); [Fokker et al. 2016](#); [Baù et al. 2015](#); [Gazzola et al. 2021](#)). However, these pioneering works were designed for specific applications, where the full spectrum of uncertainties from the reservoir flow to the modelling of subsidence was not accounted for. For example ([Fokker et al. 2016](#)) assumed a linear compaction model and only varied the reservoir compaction coefficient and the subsurface elastic moduli. [Baù et al. \(2015\)](#) focused on a simplified disk-shaped reservoir with spatially uniform pressure drop. We introduce an integrated approach, coined Ensemble-based Subsidence Interpretation and Prediction (ESIP). It takes advantage of all our a-priori knowledge in terms of processes and subsurface parameters. The objective is to span the a-priori model space with an ensemble of subsidence realizations. Later, deploying an ensemble-smoother algorithm, the ensemble is confronted with the ground-surface displacement data to refine the predictions and to identify the most likely driving mechanisms. For evaluation purposes, the integrated approach is applied on numerical flow simulations aiming to mimic the characteristics of real gas fields in the north of Netherlands. We investigate the predictive power of our approach by training our model to a certain time period, then making forecasts for the period following, and evaluating whether our method has improved the forecasting reliability.

2. WORKFLOW DESCRIPTION

This section details the integrated workflow that we designed to constrain the compaction process at depth and consequently to improve forecasting capability of subsidence. The demonstration utilizes the model of a typical gas field in the north of the Netherlands. The complexities of such a field are reproduced with a synthetic reservoir model, and multiple reservoir simulations are performed to mimic the prevalent uncertainty. One of the realizations is selected as the synthetic truth model and used for creating synthetic subsidence data, while the others are employed to show how the knowledge about the reservoir compaction and the subsidence forecasting can be improved with these data.

2.1. ENSEMBLE OF PRESSURE-DEPLETION SCENARIOS

A synthetic gas field was designed with Shell's propriety reservoir simulator MoReS, mimicking the complexities of a typical real field in the north of the Netherlands. These complexities (see [Figure 1](#)) are: (1) a fault potentially compartmentalizing the reservoir with an uncertain sealing capacity (that is an uncertain fault transmissibility), (2) an uncertain reservoir permeability, including the possibility of a flow barrier and a high permeability streak, (3) an uncertain amount of residual gas in the aquifer,

and (4) irregular reservoir boundaries and grid size. The variability in the permeability of the flow barrier results in the variability of the aquifer activity. We built an ensemble of pressure-depletion scenarios to map our a-priori belief in terms of reservoir geometry, geology, flow properties, and their uncertainty. [Figures 2](#) and [3](#) display the first and the last of the 76 members of the prior ensemble. Each member is simulating 30 years of field production; the total volumes of gas and water produced are representative of real fields in the north of the Netherlands. The depletion level of a reservoir-connected aquifer is regularly uncertain in real scenarios. This is also the case for our synthetic scenario, where the prior ensemble is intentionally mapping uncertain pre-existing knowledge on the degree of aquifer depletion. The pressure depletion of the aquifer is clearly variable between members of the prior ensemble (see [Figures 2](#) and [3](#)).

2.2. UPSCALING

The 3-D pressure fields ([Figures 1](#) to [3](#)) are upscaled to 2-D maps in two steps: the *vertical* averaging of the pressure in the reservoir layers and the *horizontal* averaging over a coarser grid. This averaging process reduces the computational runtime and is justified by the fact that a distribution of compaction over an upscaled cell in a thin and deep reservoir has a limited effect on the surface subsidence ([Geertsma, 1973](#)).

The upscaling needs to be performed such that the amount of compaction for the upscaled 2-D grid and the initial layered 3-D grid is identical. Therefore, the *vertical* and *horizontal* averaging of the 3-D pressure field need to be weighted, to take into account the variability in compaction between each individual grid block of the reservoir model. [Figure 4](#) presents the upscaled 2-D pressure fields for the first and last member of the prior ensemble of reservoir flow simulations.

2.3. FROM PRESSURE DEPLETION TO COMPACTION

Translating the pressure depletion between two epochs to volume compaction is non-trivial. Models for rock compaction based on laboratory measurements and/or field measurements are still highly debated ([De Waal, 1986](#); [Hettema et al. 2002](#); [van Thienen-Visser et al. 2015a](#); [NAM, 2015](#); [Pruikma et al. 2015](#); [Spiers et al. 2017](#); [van Eijs & van der Wal, 2018](#); [Pijenburg et al. 2018, 2019](#); [Smith et al. 2019](#)). For our exercise, four types of compaction models were considered: the *linear*, the *bilinear*, the *time decay*, and the *rate type* model. The key question that we address in this manuscript is: can we determine which compaction model explains the subsidence observations best?

The *linear* elastic compaction model assumes a linear relationship between pressure depletion dP and compaction V_{comp} :

$$V_{comp}(x, y, t) = C_m(x, y) V(x, y) dP(x, y, t) \quad (1)$$

where V is the grid block net volume. Only one material parameter, the compaction coefficient of the reservoir rock C_m is needed for the *linear* compaction model. This last model parameter can be chosen as a single value or as a function of porosity φ . A polynomial regression derived from uniaxial laboratory experiments on rock samples representative of the gas reservoirs of the north of the Netherlands (NAM, 2017) yielded a third-order polynomial:

$$C_m[10^{-5}bar^{-1}] = 267.3 \varphi^3 - 68.72 \varphi^2 + 9.85 \varphi + 0.21 \quad (2)$$

The three other compaction models (*bilinear, time-decay, rate type*) intend to capture non-linear time-dependent and/or pressure-dependent behavior. They have been formulated in response to geomechanical and geodetic measurements pointing out nonlinearities and delays in compaction and subsidence relative to the production of gas fields (De Waal, 1986; Hettema et al. 2002; van Thienen-Visser et al. 2015a; NAM, 2015; Pruiksmas et al. 2015; Spiers et al. 2017; van Eijs & van der Wal, 2018). Recent observations also indicate continuing subsidence even when production has stopped.

In the *bilinear* compaction model (NAM 2017), the compaction coefficient is assumed to be pressure-dependent. It combines two linear relationships between pressure depletion and reservoir rock compaction as:

$$V_{comp_{pre}}(x, y, t) = C_{m_{pre}}(x, y) V(x, y) (P_0(x, y) - P(x, y, t)) \quad (3)$$

$$V_{comp_{post}}(x, y, t) = C_{m_{pre}}(x, y) V(x, y) (P_0(x, y) - P_{trans}) + C_{m_{post}}(x, y) V(x, y) (P_{trans} - P(x, y, t)) \quad (4)$$

where P_0 and P_{trans} respectively define the initial pressure before the start of production and the transition pressure. The first relationship, equation (3), should fit the stiff behavior at early stages using a low $C_{m_{pre}}$ value from the onset of pressure depletion up to the transition pressure P_{trans} . The second relationship, equation (4) addresses the later, weaker behavior using a high value for $C_{m_{post}}$

for higher pressures. Two material parameters $C_{m_{pre}}$, $C_{m_{post}}$ and the pressure P_{trans} are required to compute the bilinear compaction.

The *time-decay* model was inspired by the ubiquitous diffusive behavior of many physical systems pushed into non-equilibrium high-energy states, which slowly decay to their low-energy equilibrium states again (Mossop 2012). Such a diffusion-type process can be modeled using a convolution of a linear relationship between pressure depletion and reservoir rock compaction with an exponential time decay function:

$$V_{comp}(x, y, t) = C_m(x, y, t) V(x, y, t) dP(x, y, t) *_t \frac{1}{\tau} \exp\left[-\frac{t}{\tau}\right] \quad (5)$$

where $*_t$ is the convolution operator with respect to time. To compute the *time decay* compaction, the material parameter C_m and the characteristic time decay constant τ are required.

The *rate type* compaction model was derived from laboratory measurements designed for capturing the loading-rate dependency in sandstones (De Waal 1986). The onset and arrest of production can be seen as changes in loading rate of the reservoir rocks. At the change in loading rate, a first direct elastic strain response ε_d is modeled, followed by a more gradual creep strain response ε_s . We followed (Pruikma et al. 2015) with a formulation based on the linear isotach compaction. The *rate type* isotach compaction was implemented as an explicit Euler finite-difference scheme keeping a constant time step Δt (Pruikma et al. 2015). To calculate the compaction of one grid block grid (x, y) the applied numerical scheme can be divided into 5 steps:

1) From the current effective vertical stress $\sigma(t)$ and strain $\varepsilon(t)$, calculate the creep strain rate as:

$$\dot{\varepsilon}_s(t) = \left(\frac{\varepsilon(t) - \varepsilon_0}{\sigma(t)} - C_{m_d} \right) \dot{\sigma}_r \left(\frac{\varepsilon(t) - \varepsilon_0}{\sigma(t) C_{m_{ref}}} \right)^{-1/b} \quad (6)$$

The vertical stress is derived from the reservoir depth and the mean density ρ_{mean} of the subsurface up to the reservoir top z_r , and the effective stress is its difference with the pressure:

$$\sigma(t) = \rho_{mean} g z_r - P(t) \quad (7)$$

At the onset of pressure depletion/production t_0 , the direct elastic strain $\varepsilon_d(t_0)$ and creep strain $\varepsilon_s(t_0)$ are both taken zero, and thus the total strain $\varepsilon(t_0)$ is set to zero.

The reference total strain is expressed as:

$$\varepsilon_0 = -C_{m_{ref}} \sigma_r \quad (8)$$

with the reference vertical effective stress $\sigma_r = \sigma(t_0)$.

Three material parameters ($C_{m_{ref}}$, C_{m_d} , and b) and one state parameter ($\dot{\sigma}_r$) are needed to compute the *rate type* compaction. The parameter b is an empirical laboratory-derived constant. The material parameters $C_{m_{ref}}$ and C_{m_d} are respectively the reference and direct compaction coefficients, where $C_{m_{ref}}$ is the compaction coefficient corresponding to the pre-depletion loading rate, and thus by definition relatively high. Parameter C_{m_d} is dedicated to map out the direct effect at the change of loading rate. In the scenario of the change of loading rate due to the onset of pressure depletion, C_{m_d} is expected to be relatively low in order to mimic the stiff response of the reservoir rocks. The state parameter $\dot{\sigma}_r$ represents the reference vertical effective stress rate at the start of the reservoir depletion.

2) The second step of the Euler scheme consists in calculating the increase in creep strain as:

$$\Delta\varepsilon_s = \dot{\varepsilon}_s(t) \Delta t \quad (9)$$

and update the creep strain as:

$$\varepsilon_s(t_{+1}) \rightarrow \varepsilon_s(t) + \Delta\varepsilon_s \quad (10)$$

3) The time is updated as $t_{+1} \rightarrow t + \Delta t$

4) Following a linear stress-strain relationship one can calculate the direct elastic strain as:

$$\varepsilon_d(t + \Delta t) = C_{m_d} (\sigma(t + \Delta t) - \sigma_r) \quad (11)$$

5) Finally one can calculate the total cumulative strain as:

$$\varepsilon(t + \Delta t) = \varepsilon_s(t + \Delta t) + \varepsilon_d(t + \Delta t) \quad (12)$$

And the total cumulative compaction as:

$$V_{comp}(t + \Delta t) = -V_0 \varepsilon(t + \Delta t) \quad (13)$$

with V_0 the grid block net volume, assumed constant over time. After this last fifth step the workflow returns to the first step for the next time step.

2.4. FROM COMPACTION TO GROUND-SURFACE DISPLACEMENTS

In order to propagate the 2-D compaction fields to surface subsidence we employ influence functions, also called Green functions. They are rotationally symmetric surface displacement profiles for a unit volume of compaction (a nucleus of volumetric strain) and they are used in conjunction with the 2-D compaction fields, in order to calculate the total surface displacements at the desired geodetic benchmarks locations. We used the semi-analytical approach developed by (Fokker & Orlic 2006), which is based on the nucleus of strain concept (Mindlin & Cheng 1950) and which extends Geertsma's analytical solutions (Geertsma 1973; Van Opstal 1974) in the sense that it can handle a layered elastic subsurface. The influence functions give the vertical and horizontal surface displacements for a single "nucleus" (a unit center of compression) located at reservoir depth, and for given elastic parameters. The required input parameters are the reservoir depth, the depths of the layer interfaces, Young's modulus and Poisson's ratio of each layer. For the present study, only an elastic two-layer subsurface model has been considered. The interface between the layers was put at -3800m depth, 80m below the reservoir (-3720m). Uncertainties of the model parameters (Young's modulus and Poisson's) of both layers have been mapped out in the prior ensembles (see Section 2.5) to cover the broad range of possibilities from a homogeneous elastic subsurface (no elastic differences between both layers) to a subsurface with a stiff basement (that is with a strong contrast of elasticity between the top and bottom layer). The subsidence signatures of a homogeneous elastic subsurface and one with a stiff basement are quite different.

Following the application of the influence function to the compaction grids and the calculation of the modeled surface displacements, a set of 90 double differences is generated for each realization for the training period [1986-2008]. The combinations of modeled 90 double differences (in terms of benchmark locations and time of the geodetic campaigns) correspond to those of the measured (synthetic in our case) 90 double differences.

2.5. PRIOR PREDICTIONS

For each type of compaction model and based on the prior information, a prior model vector ensemble of N_e vectors $M_0 = (m_1, m_2, \dots, m_{N_e})$ is created. These vectors are generated by stochastically selecting values in the prior distributions of the driving input parameters. In this sense the available prior knowledge is mapped to the ensuing ground-surface displacement, by means of the geomechanical forward models for both the compaction and the influence functions to translate compaction at depth to ground-surface displacements. Note here that the prior model parameters used to generate the ensemble of reservoir flow simulations are not included in M_0 and thus will not be updated during the data assimilation procedure (detailed in [Section 2.7](#)).

The prior distributions of all the model parameters used for the compaction models and influence function are presented respectively in [Table 1](#) and [Table 2](#). For some model parameters, stochastic factors are employed to generate the prior ensembles. The prior ensembles of some compaction coefficients (C_m , $C_{m_{pre}}$, and C_{m_d}) are generated by multiplying the initial compaction coefficient value C_m (as defined by equation (2)) with their respective stochastic factors ($C_m \text{ fac}$, $C_{m_{pre}} \text{ fac}$, and $C_{m_d} \text{ fac}$). The early stage low compaction coefficient $C_{m_{pre}}$ of the *bilinear* compaction model, is then multiplied by the stochastic factor $C_{m_{post}} \text{ fac}$ to obtain the prior ensemble of relatively higher later stage compaction coefficient $C_{m_{post}}$. The prior ensemble of pre-depletion relatively higher compaction coefficient $C_{m_{ref}}$ of the *rate type* compaction model, is generated by dividing C_{m_d} with the stochastic factor $C_{m_{ref}} \text{ fac}$.

From our a-priori knowledge one can generate an ensemble of surface displacements predictions for each component of surface displacements (u_1, u_2, u_3). From these ensembles of surface displacements one can generate a prior ensemble of double differences (defined as differences in time of level differences in space, see [Section 2.6](#)) for each type of compaction model. The geomechanical forward model (compaction model + influence function) is indicated by the function G working on each vector of prior model parameters. For the sake of clarity, the ensembles GM_0 for each type of compaction model, will from now on only refer to the ensemble of N_e prior double difference dd predictions:

$$GM_0 = dd^{prior} = (dd_1^{prior}, dd_2^{prior}, \dots, dd_{N_e}^{prior}) \quad (14)$$

For each type of compaction model one can define a mean and a covariance matrix of the prior double differences predictions. The mean over the N_e members is defined as:

$$\langle GM_0 \rangle = \mu[dd^{prior}] = \frac{1}{N_e} \sum_{i=1}^{N_e} dd_i^{prior} \quad (15)$$

The covariance over the N_e members between the j th location and the k th location is defined by

$$C_{jk}^{prior} = \frac{1}{N_e - 1} \sum_{i=1}^{N_e} (dd_{ij}^{prior} - \mu[dd_j^{prior}]) \cdot (dd_{ik}^{prior} - \mu[dd_k^{prior}]) \quad (16)$$

which can be written in matrix notation as:

$$C^{prior} = (GM'_0 \cdot GM_0'^T) / (N_e - 1) \quad (17)$$

And where

$$GM'_0 = GM_0 - \langle GM_0 \rangle \quad (18)$$

The mean of the priors $\langle GM_0 \rangle$ can be seen as the best prior estimates for the various model types. The ensembles can be regarded as the implementation of the prior knowledge, and, assuming a production scenario from time T_1 to T_2 (that is from 2008 to 2015), they can be used to generate the best prior estimates for the various types of compaction model from T_0 to T_2 . For a real scenario, the times T_1 and T_2 correspond respectively to the present day and a future geodetic campaign.

2.6. GEODETIC OBSERVATIONS

Two types of ground-surface displacement measurements were employed for our exercise: optical levelling and GPS. Their spatial distribution with regard to the reservoir mimics real cases of the north of the Netherlands (Figure 4). The levelling measurements give vertical displacements only (subsidence or heave, indicated by u_3); GPS also measures the horizontal displacements (West-East component u_1 , and North-South u_2). The additional assimilation of the horizontal displacements is particularly interesting for constraining the shape of the subsidence bowl. Our integrated approach allows flexible incorporation of other measurement types like InSAR, if necessary.

To connect to the actual procedure of taking measurements the synthetic ground-surface displacements were translated to double difference estimates and their corresponding covariance matrix. A double difference indicates a difference in time of a level difference in space (van Leijen et al. 2017), which circumvents the effect of the choice of references in time and space. We considered 90 double differences, including both optical levelling and GPS, for the training period [1986-2008]. They were chosen from one member of our prior ensemble – which was not used anymore in the further analysis.

Along with the simulated observations, the uncertainties of the observations due to measurement noise, and temporal and spatio-temporal idealization noise were considered, formalized with the full data covariance matrix according to (van Leijen et al. 2017). Figure 5 presents the full data covariance of the 90 double differences for the training period [1986-2008]. The temporally correlated idealization noise, mostly giving positive off-diagonal numbers, describes the effect of benchmark instability. Most negative off-diagonal numbers are related to the spatio-temporal components reflecting additional surface motion not associated with the signal of interest, e.g., compaction of shallow soft soil layers. A detailed description of the method used to simulate the noise of the measurements and the full covariance matrix is beyond the scope of the present publication. We simply note here that the full data-covariance matrix, describing the uncertainty/variance of each measurement, but also the temporal and spatio-temporal correlations between the measurements, even if often neglected (e.g. Fokker et al. 2012), is essential for a proper conditioning of the model parameters (see later Section 2.7).

2.7. CONDITIONING OF THE MODELS WITH THE DATA

The next step consists in confronting or conditioning the prior estimates up to T_1 with the geodetic data acquired up to T_1 (that is from 1986 to 2008, [1986-2008]).

The ensemble-smoother algorithm consists in an inversion scheme, for which the goal is to maximize an objective function J (or minimize $-\log[J]$) of the form (Menke 1989; Tarantola 2005):

$$J(m) = \exp \left[-\frac{1}{2} \left((G(m) - dd)^T C_{dd}^{-1} (G(m) - dd) + (m - m_0)^T C_m^{-1} (m - m_0) \right) \right] \quad (19)$$

where m and $G(m)$ are respectively the “optimized” (posterior) vector of model parameters and double differences predictions (that is dd^{post}) from time T_0 to T_1 [1986-2008].

In other words, the objective function is integrated in an inversion scheme seeking the solution for the vector m of model parameters that optimizes the match with the data and with the prior information m_0 . This way, the ensemble-smoother conditioning step updates both models and predictions.

The optimal “least-square” solution of equation (19) for one particular realization and assuming a linear inverse problem is given by [Tarantola \(2005\)](#):

$$\hat{m} = m_0 + C_m G^T (G C_m G^T + C_{dd})^{-1} (dd - G m_0). \quad (20)$$

Converting this expression into an ensemble expression, where the model covariance is determined by $C_M = M'_0 M'^T_0 / (N_e - 1)$, and $M'^T_0 G^T = (G M'_0)^T$, we can translate this equation to a forward model that does not have to be a matrix multiplication – i.e. using the equation $G M'_0$ as the difference of $G M_0$ and its mean. The estimate then is replaced by the new ensemble. Equation (20) becomes:

$$\hat{M} = M_0 + C_M G^T (G C_M G^T + C_{dd})^{-1} (DD - G M_0) \quad (21)$$

which can be rewritten as:

$$\begin{aligned} \hat{M} &= M_0 + \frac{M'_0 M'^T_0}{N_e - 1} G^T \left\{ G \frac{M'_0 M'^T_0}{N_e - 1} G^T + C_{dd} \right\}^{-1} \cdot (DD - G M_0) \\ &= M_0 + M'_0 M'^T_0 G^T \{ G M'_0 M'^T_0 G^T + (N_e - 1) C_{dd} \}^{-1} \cdot (DD - G M_0) \\ &= M_0 + M'_0 [G M'_0]^T \{ G M'_0 [G M'_0]^T + (N_e - 1) C_{dd}^{-1} \}^{-1} \cdot (DD - G M_0) \end{aligned} \quad (22)$$

In equation (22) M_0 is the prior ensemble of model parameters; $G M_0$ represents the result of the non-linear geomechanical forward model working on all the members of the prior ensemble, that is the ensemble of prior double differences predictions. Primes indicate anomalies with respect to the ensemble mean as $M'_0 = M_0 - \langle M_0 \rangle$ and $G M'_0 = G M_0 - \langle G M_0 \rangle$. Finally $DD = (dd + \varepsilon_1, dd + \varepsilon_2, \dots, dd + \varepsilon_{N_e})$ corresponds to an ensemble of double differences data realizations created adding to the vector data dd random noise vectors ε corresponding to the uncertainty range of the measurements. This procedure ensures a posterior error covariance that is consistent with the theory. The background of this was discussed by [Burgers et al. \(1998\)](#).

After the data assimilation step has been performed, that is computing equation (22), posterior model parameters included in \hat{M} are used to re-run the compaction models and influence functions to generate the posterior ensemble of ground-surface displacements. This implementation is called the Ensemble Smoother with one Single Step of data assimilation (ES-SS).

The non-linearity in the geomechanical forward model can be more appropriately handled by applying multiple steps of data assimilation, so called Ensemble Smoother with Multiple Data Assimilation (ES-MDA) (Emerick and Reynolds 2013a). In ES-MDA, the output ensemble of the smoother is used as input for the next update. The same data are used for all assimilation steps; to compensate for the effect of the multiple application, the data covariances used in the update steps are increased with respect to its actual value. For each step, a covariance multiplication factor α_i must be chosen, so that $\sum_{i=1}^{N_a} \frac{1}{\alpha_i} = 1$ (with N_a the number of assimilation steps). Following Emerick and Reynolds (2013a), we apply 4 steps with decreasing α_i with increasing i , giving progressively larger weights to later update steps.

ES-MDA updates model parameters in a more “progressive” way, relative to the rather “aggressive” single step of the ES-SS. Indeed, even if at the end of the 4 steps of the ES-MDA the actual covariance is honored, during each step of the ES-MDA the update can be seen as relatively “gentle” because of the covariance inflation. Therefore, one can expect a higher ability of the ES-MDA for avoiding ensemble collapse. The downside of ES-MDA is that it is computationally slower; in our case, 4 times slower as we pick 4 steps of assimilation.

2.8. PERFORMANCE ASSESSMENT

The performance of the ensemble-smoother algorithms (ES-SS and ES-MDA), in updating the prior ensembles towards posterior ensembles consistent with the data, can quantitatively be evaluated by different metrics. First we define a metric based on the Absolute Error (AE) (Baù et al. 2015; Gazzola et al. 2021), which is possible since the synthetic data were generated with known parameters:

$$AE(dd) = \frac{1}{N_e \cdot N_{dd}} \sum_{j=1}^{N_e} \sum_{i=1}^{N_{dd}} |dd_{i,j} - dd_{i,true}| \quad (23)$$

$$AE(m) = \frac{1}{N_e} \sum_{j=1}^{N_e} |m_j - m_{true}| \quad (24)$$

A second metric, the Average Ensemble Spread (*AE*S) can be defined independently from the true values: the variation of the values with regard to their average (Baù et al. 2015; Gazzola et al. 2021):

$$AES(dd) = \frac{1}{N_e \cdot N_{dd}} \sum_{j=1}^{N_e} \sum_{i=1}^{N_{dd}} |dd_{i,j} - \overline{dd}_i| \quad (25)$$

$$AES(m) = \frac{1}{N_e} \sum_{j=1}^{N_e} |m_j - \bar{m}| \quad (26)$$

Both metrics can be defined independently for the data and for the model parameters. For the comparison of data with model results, the average is determined. For the model parameters we calculate the value for each parameter separately, because we want to know the behavior of the separate parameters, and their absolute values differ considerably. Low values of *AE* correspond to a model close to the truth. Low values of *AE*S indicate that the spread of the ensemble and thus the model uncertainties are small.

To evaluate the update of the ensemble-smoother algorithms (ES-SS and ES-MDA) we evaluate the variation between the prior and the posterior metrics with respect to the prior metrics: $\frac{AE_{prior} - AE_{posterior}}{AE_{prior}}$ and $\frac{AES_{prior} - AES_{posterior}}{AES_{prior}}$. The closer their value is to unity, the better the estimate is (for *AE*) or the stronger the constraining power of the smoother, in the sense of reducing the uncertainty of the estimate (for *AE*S). In Sections 4 & 5, we will only use the normalized values, but we will still call them *AE* and *AE*S for convenience.

A third class of quality metrics is formed by a χ^2 test. It evaluates the difference between model results and data with account of their covariance. We have defined two formulations, one in which the covariance is formed by the combination of covariances of both the model ensemble forecasts and the data, and one in which only the covariance of the data is used. The latter does not completely use the ensemble result but incorporates its average only:

$$\frac{\chi_c^2}{N_{dd}} = \frac{1}{N_{dd}} (dd - \mu[dd^{post}])^T \cdot [C_{dd} + C_{GM}]^{-1} \cdot (dd - \mu[dd^{post}]) \quad (27)$$

$$\frac{\chi^2}{N_{dd}} = \frac{1}{N_{dd}} (dd - \mu[dd^{post}])^T \cdot C_{dd}^{-1} \cdot (dd - \mu[dd^{post}]) \quad (28)$$

The χ^2 measures (equations (27) and (28)) judge if the model posterior predictions and the data are consistent. Loosely speaking, the average squared mismatch should be of the order of the covariance.

The corrected measure employs a combination of the data covariance and the covariance of the posterior prediction. A $\frac{\chi_c^2}{N_{dd}}$ close to unity means that the model ensemble is matching the data and that the quality of the match is in agreement with the error covariance of the data. The non-corrected measure $\frac{\chi^2}{N_{dd}}$ compares the average of the model predictions with the data, with account of the data covariance.

3. DESCRIPTION OF THE EXERCISE AND CHALLENGES

Our exercise aims to estimate and forecast ground-surface displacements from 1986 to 2015 based on synthetic data from 1986 to 2008. We ran reservoir simulations for multiple scenarios from 1986 to 2015. Because the synthetic data correspond to one member of the prior ensemble, we have data and models from 1986 to 2015. Our predictions from 1986 to 2015, based on model conditioning from 1986 to 2008, can therefore be directly checked against our synthetic measurements from 1986 to 2015.

Each type of compaction model corresponds to one separate prior ensemble. Each of the four prior ensembles is based on the initial ensemble of 76 flow reservoir simulations. Uncertainties in the compaction model and the influence function are then superposed to the uncertainties in the pressure depletion, resulting in an ensemble size of 760 members for each of the four types of compaction model. At each step of the modelling workflow, the full spectrum of uncertainties is thus properly accounted for. One member of the *bilinear* prior ensemble is randomly picked as synthetic data and excluded from the set that is used for the assimilation exercise.

The prime scientific challenge that we are tackling with our exercise is: does our integrated approach combining forward models (and their uncertainties) with the ensemble-smoother algorithms help to discriminate which type of compaction model best explains the synthetic data? We would hope that the integrated approach should easily identify the *bilinear* compaction model as the best model. However, there are at least three reasons that might complicate this identification. The first one is that the non-linearity between the pressure depletion and reservoir compaction, imposed by the *bilinear* compaction model, can potentially be reproduced by the *time decay* and *rate type* compaction models. It might thus be a real challenge for our integrated approach to discriminate between the *bilinear*, *time decay* and *rate type* models, and to identify the *bilinear* compaction model as the model that explains the data best. The second reason is that the large uncertainties at both the pressure depletion level and the influence function level might blur the differences between the spatio-

temporal signatures of each type of compaction model. The third reason concerns the geodetic synthetic data and their spatio-temporal distribution. To mimic real field cases of the north of the Netherlands, the geodetic benchmarks had not been distributed uniformly in space and time with regard to the complex reservoir and aquifer. This uneven distribution of the observations, and their intrinsic errors (mapped in the full covariance matrix, see [Figure 5](#)), might complicate the ability of the integrated approach to discriminate between each type of compaction model.

4. RESULTS

4.1. MODEL PARAMETERS

[Figures 6](#) and [7](#) display the prior and posterior ensembles of model parameters for both the ES-SS and ES-MDA. The posterior ensembles are the ones inferred after calibration during the training period [1986-2008]. The less aggressive multi-step update of the ES-MDA helps to “better constrain” most of the model parameters. “Better constrain” means that the reduction of the parameters uncertainties is more effective with the ES-MDA than with the ES-SS. For the model parameters of the influence function, used to propagate the reservoir compaction in terms of ground-surface displacement, only the ratio between the Young’s modulus of the top layer (E_r , from the ground surface to -3800m depth, that is including the reservoir) and the Young’s modulus of the bottom layer (E_b , that is the basement) is updated significantly during the data assimilation procedure. Interestingly this update of the Young’s modulus is very similar for all types of compaction models.

For the *bilinear* compaction model, where we know the true model parameters used to generate the synthetic data, the visual-inspection-based conclusion about the parameter distributions is confirmed by the metrics AE and AES . The metrics show more constraining power for the ES-MDA than for the ES-SS ([Figure 8](#)): the posterior ensembles of model parameters obtained after the fourth assimilation step of the ES-MDA are less scattered and more centered around the true set of model parameters. [Figure 8](#) also shows that the Young’s modulus of the basement (E_b) is more constrained by the data assimilation than the elasticity of the top layer (E_r). The conditioning of the ratio of Young’s modulus (E_r/E_b) towards the true, as visualized in [Figures 6](#) and [7](#), is thus dominated by the update of the Young’s modulus of the basement (E_b).

4.2. GROUND-SURFACE DISPLACEMENTS

[Figures 9](#) to [12](#) display the prior and posterior ensembles of ground-surface displacements for both the ES-SS and ES-MDA. The results are shown for two specific geodetic benchmark locations, one on

top of the reservoir (location 18, [Figure 4](#)) and one on top of the aquifer (location 8, [Figure 4](#)). For both ensemble-smoother algorithms (ES-SS and ES-MDA), a qualitative assessment of the curves indicates that the spread of each posterior is smaller than the spread of their prior. The vertical ground-surface displacements of the posterior ensembles are mostly “well aligned” with the data in the sense that the spread of the posterior ensembles encompasses the data. Only for the *linear* compaction model, and for the combination *rate-type* compaction model with ES-SS, the alignment is suboptimal. With the exception of the *rate-type* compaction model with the ES-SS, the horizontal ground-surface displacements (West-East component u_1), even if of low magnitudes, are relatively “well constrained” by the posterior ensembles for both the reservoir benchmark and aquifer benchmark.

The posterior ground-surface displacements at the benchmark location on top of the aquifer (benchmark location 8, [Figure 4](#)) are in better agreement with the data than the movements calculated with the prior ensemble. Actually, the mean posteriors moved very close to the data during the assimilation procedure. This is remarkable given (i) the high uncertainty of the aquifer depletion and (ii) the low magnitudes of the ground-surface displacements on top of the aquifer compared to those on top of the reservoir. Interestingly, for the benchmark location on top of the aquifer, the relative bandwidths of the posterior (with the ES-MDA after four steps of assimilation) horizontal ground-surface displacements (defined as the ratio between the standard deviation and the mean of the ensemble) are smaller than those of the posterior vertical displacements. As an example, for the *bilinear* compaction model, the relative bandwidth of the posterior horizontal ground-surface displacements on top of the aquifer is 0.57 whereas for the posterior vertical ground-surface displacements it is 1.01. This points out the importance of the use of the horizontal ground displacements to constrain the shape of the subsidence bowl on the sides of the reservoir and ultimately to constrain the aquifer activity.

For each compaction model, both metrics AE and AES , are better for the ES-MDA than for the ES-SS ([Figure 13](#)). For the *bilinear*, *time decay*, and *rate type* compaction model, both metrics have reduced considerably after the fourth step of assimilation with the ES-MDA. This demonstrates the good fit of the mean posterior ensembles and the reduction of the initial large prior bandwidths of ground-surface displacements after application of the ES-MDA. Even if the *time decay* compaction model is slightly under-performing (indicated by a lower AE), the performance differences as evaluated by the AE and AES , between the posterior ensembles obtained with the ES-MDA for the *bilinear*, *time decay*, and *rate type* compaction are not striking. However, the $\frac{\chi_c^2}{N_{dd}}$ and $\frac{\chi^2}{N_{dd}}$ metrics indicate that the posterior

ensembles of the *bilinear* compaction model is the one best explaining – that is with the values closest to unity – the synthetic data (Figure 13).

The suboptimal update obtained with the ES-SS for the ground-surface displacements of the *rate-type* compaction model (Figure 12) is confirmed by the lower *AE* and *AES* than for the *bilinear* and *time decay* ensembles (Figure 13). For the *rate-type* compaction model, the performance differences between the ES-SS and ES-MDA are larger than for the other models. It seems that for a complex compaction model (with a higher number of model parameters) as the *rate type*, the need for a less aggressive assimilation procedure with multiple steps is more pronounced. The suboptimal alignments of the posterior ground-surface displacements of the *linear* compaction model (Figure 9) are confirmed by their poor values for *AE*, $\frac{\chi_c^2}{N_{dd}}$ and $\frac{\chi^2}{N_{dd}}$ (i.e. $\frac{\chi_c^2}{N_{dd}} \gg 1$ and $\frac{\chi^2}{N_{dd}} \gg 1$) compared to those derived for the other compaction models (Figure 13).

An important question concerned the reliability of subsidence forecasts. Figure 13 presents the quality metrics both for the training period [1986 – 2008] and for the full period including the forecasting, for which no measurements were used in the assimilation [1986 – 2015]. We see that the metric for the full period is not significantly different from the metric for the training period. Especially the $\frac{\chi_c^2}{N_{dd}}$ and $\frac{\chi^2}{N_{dd}}$ for the *bilinear* model do not increase with the extension of the evaluation period. This indicates that the forecast of the *bilinear* model is trustworthy.

5. DISCUSSION

The main objective of our exercise was to test if our integrated approach could effectively identify the *bilinear* compaction model as the best compaction model to explain the synthetic data (themselves generated with a *bilinear* compaction model) and to make trustworthy forecasts. Our analysis has demonstrated that with the combination of the *AE* and *AES* metrics it was possible to identify the *bilinear* and *rate-type* as best performing compaction models. The additional $\frac{\chi_c^2}{N_{dd}}$ and $\frac{\chi^2}{N_{dd}}$ metrics allowed to clearly identify the *bilinear* compaction model as better performing than the *rate-type* model. Our integrated approach is thus indeed capable to identify the main driving compaction model. This is especially remarkable as our exercise incorporated the full spectrum of uncertainties from the reservoir flow to the modelling of subsidence. To our best knowledge, there are no previous studies that have honored this full spectrum. Even if large uncertainties in the ensembles of pressure-depletion scenarios and influence functions were effectively “blurring” the spatio-temporal signature

of the reservoir compaction, the integrated approach successfully recognized the *bilinear* compaction as best model to explain the synthetic data.

It is important to stress here that the pressure-depletion realizations were not subjected to the assimilation procedure. Even if the uncertainties in the pressure depletion were kept constant throughout the assimilation procedure, the model parameters of the *bilinear* compaction model were well constrained and aligned with the true-synthetic data. Both footprints in the subsidence signal, of (1) the pressure depletion and (2) the *bilinear* compaction, were thus effectively disentangled by our integrated approach.

In addition, our analysis has demonstrated that the update of the model parameters of the influence function is independent of the type of compaction model. Indeed, for each type of compaction model, the posterior ensembles of the Young's modulus ratio (between the two subsurface layers) similarly converged towards the data. This last result indicates that again our integrated approach was capable to disentangle the unique footprint of the elastic layering on the subsidence signal from the footprints of the pressure depletion and compaction.

The main limitation of the current workflow is that the ensemble of reservoir flow simulations is unchanged upon assimilation. Ideally one should update the controlling reservoir parameters and make a new reservoir simulation for every ensemble member. Introducing potential future implementations, it is important to utilize the versatility of applications offered by ensemble-smoother algorithms. Our integrated approach was developed for the production of a natural gas field, but it can easily be adapted for other settings of exploitation of subsurface resources causing ground-surface movement. Typical examples are the injection of CO₂ (Vasco et al. 2010), underground gas storage (Teatini et al., 2011; Castelleto et al. 2013), steam injection (Khakim et al. 2012), geothermal systems (Mossop & Segall 1999; Allis et al. 2009; Vasco et al. 2013), groundwater extraction (Galloway and Burbey 2011; Zhu et al. 2015), phreatic groundwater level management (Fokker et al. 2019) and salt mining (Fokker & Visser 2014). We have recently deployed the ES-SS to identify the driving mechanisms of induced seismicity at the Groningen gas field on a real dataset (Candela et al. 2021). This specific scenario demonstrates that the ensemble-smoother algorithms can be also applied to a discrete dataset, such as an earthquake catalog. The flexibility of the implementation of the ensemble-smoother also offers the possibility to assimilate multiple types of data. As an example, jointly assimilating subsidence geodetic observations and seismicity data, our understanding of the driving mechanisms of both induced subsidence and seismicity might be

improved. An active research area in the Netherlands is the disentangling of the relative contribution between deeply seated sources of subsidence (as natural gas extraction) and shallow seated sources of subsidence (Fokker et al. 2019). These sources often interfere. Incorporating in ESIP the additional forward models for shallow seated sources of subsidence, such as soil compaction and oxidation caused by lowering of the phreatic level, might help to achieve this disentangling (Candela et al. 2020).

6. CONCLUSION

We have presented an integrated approach for subsidence evaluation, coined ESIP (Ensemble-Based Subsidence Interpretation and Prediction). We wanted to account for all pre-existing knowledge in terms of processes and subsurface parameters instead of a-priori arbitrarily omitting some known complexities. Therefore we combined fast physics-based forward models with ensemble-smoother algorithms for the data assimilation, and we tailored the procedure to constrain the driving physical processes of anthropogenically induced subsidence.

The predictive power of the integrated workflow has been demonstrated for a synthetic gas reservoir-aquifer system incorporating all the characteristics and uncertainties of real cases in the north of Netherlands. These characteristics cover irregular reservoir-aquifer boundaries, in terms of reservoir permeability with flow barrier and high permeability streak, fault compartmentalization, and residual gas in the aquifer. Even when all the a-priori known complexities were present in all steps of the workflow (from reservoir depletion to ground-surface displacements), the model parameter uncertainties of each forward model could be reduced with the assimilation of subsidence data. This allowed us to effectively identify and constrain the driving physical processes of anthropogenically induced subsidence.

The identification of the driving compaction process is especially important for the subsidence forecasts. In the case of a reservoir production shutdown, the subsidence forecast obtained with each reservoir compaction model would be drastically different. As an example, for an identical pressure diffusion scenario after shutdown, the *time decay* compaction model would result in a more severe subsidence than for the *linear* compaction model. Consequently, our workflow leads to well-informed probabilistic subsidence forecasts with well-defined error bounds in agreement with the data.

ACKNOWLEDGEMENTS

The data generated by the integrated approach are available on request from the corresponding author.

REFERENCES

- Allis, R., Bromley, C., Currie, S. (2009). Update on subsidence at the Wairakei-Tauhara geothermal system, New Zealand. *Geothermics* 38, 169–180.
- Baù, D., Ferronato, M., Gambolati, G., Teatini, P., & Alzraiee, A. (2015). Ensemble smoothing of land subsidence measurements for reservoir geomechanical characterization. *International Journal for Numerical and Analytical Methods in Geomechanics*, 39(2), 207-228.
- Burgers, G., Jan van Leeuwen, P., & Evensen, G. (1998). Analysis scheme in the ensemble Kalman filter. *Monthly weather review*, 126(6), 1719-1724.
- Castelletto, N., Ferronato, M., Gambolati, G., Janna, C., Marzorati, D., Teatini, P. (2013). Can natural fluid pore pressure be safely exceeded in storing gas underground?. *Engineering Geology*, Volume 153, Pages 35-44, ISSN 0013-7952, <https://doi.org/10.1016/j.enggeo.2012.11.008>.
- Candela, T., Koster, K., Stafleu, J., Visser, W., and Fokker, P. (2020). Towards regionally forecasting shallow subsidence in the Netherlands, *Proc. IAHS*, 382, 427–431, <https://doi.org/10.5194/piahs-382-427-2020>.
- Candela, T., Pluymaekers, M., Ampuero, J.P., van Wees, J.D., Buijze, L., Wassing, B., Osinga, S., Grobbe, N., Muntendam-Bos, A.G. (2021). Controls on the spatio-temporal patterns of induced seismicity in Groningen constrained by physics-based modeling with Ensemble-Smoother data assimilation. *in review at Geophysical Journal International*.
- De Waal, J. A. (1986). On the rate type compaction behaviour of sandstone reservoir rock. Doornhof, D. (1992). Surface subsidence in the Netherlands-the Groningen gas-field. *Geologie en Mijnbouw*, 71(2), 119-130.
- Doornhof, D. (1992). Surface subsidence in The Netherlands: The Groningen gas field. *Geologie en Mijnbouw* 71, 119–130.
- Emerick, A. A., & Reynolds, A. C. (2013a). Ensemble smoother with multiple data assimilation. *Computers & Geosciences*, 55, 3-15.

Emerick, A. A., & Reynolds, A. C. (2013b). Investigation of the sampling performance of ensemble-based methods with a simple reservoir model. *Computational Geosciences*, 17(2), 325-350.

Evensen, G. (2003). The ensemble Kalman filter: Theoretical formulation and practical implementation. *Ocean dynamics*, 53(4), 343-367.

Fokker, P. A., & Orlic, B. (2006). Semi-analytic modelling of subsidence. *Mathematical Geology*, 38(5), 565-589.

Fokker, P. A., Visser, K., Peters, E., Kunakbayeva, G., & Muntendam-Bos, A. G. (2012). Inversion of surface subsidence data to quantify reservoir compartmentalization: A field study. *Journal of Petroleum Science and Engineering*, 96, 10-21.

Fokker, P. A., & Visser, J. (2014, August). Estimating the distribution of salt cavern squeeze using subsidence measurements. In *48th US Rock Mechanics/Geomechanics Symposium*. American Rock Mechanics Association.

Fokker, P. A., Wassing, B. B. T., Van Leijen, F. J., Hanssen, R. F., & Nieuwland, D. A. (2016). Application of an ensemble smoother with multiple data assimilation to the Bergermeer gas field, using PS-InSAR. *Geomechanics for Energy and the Environment*, 5, 16-28.

Fokker, P. A., Gunnink, J. L., Koster, K., & de Lange, G. (2019). Disentangling and parameterizing shallow sources of subsidence: Application to a reclaimed coastal area, Flevoland, the Netherlands. *Journal of Geophysical Research: Earth Surface*, 124. <https://doi.org/10.1029/2018JF004975>.

Galloway D.L, and Burbey T.J. (2011) Review : regional land subsidence accompanying groundwater extraction. *Hydrogeology* 19, 1459-1486 DOI 10.1007/s10040-011-0775-5.

Gazzola L., Ferronato M., Frigo M., Teatini P., Zoccarato C. (2021) Integration of Data Assimilation Techniques in Geomechanical Modelling: Ensemble Smoother with Multiple Data Assimilation Analysis. In: Barla M., Di Donna A., Sterpi D. (eds) *Challenges and Innovations in Geomechanics*. IACMAG 2021. *Lecture Notes in Civil Engineering*, vol 125. Springer, Cham. https://doi.org/10.1007/978-3-030-64514-4_93.

Geertsma, J. (1973). Land subsidence above compacting oil and gas reservoirs. *Journal of Petroleum Technology*, 25(06), 734-744.

Hettema, M., Papamichos, E., & Schutjens, P. M. T. M. (2002). Subsidence delay: field observations and analysis. *Oil & Gas Science and Technology*, 57(5), 443-458.

Jaynes, E. T. (2003). *Probability theory: The logic of science*. Cambridge university press.

Khakim M., Tsuji T, Matsuoka T. (2012). Geomechanical modeling for InSAR-derived surface deformation at steam-injected oil sands. *J. Pet. Sci Eng.*, 96–97:152–161.

- Menke, W. (1989). International Geophysics Series. *Geophysical data analysis: Discrete inverse theory*, 45.
- Mindlin, R. D., & Cheng, D. H. (1950). Nuclei of strain in the semi-infinite solid. *Journal of Applied Physics*, 21(9), 926-930.
- Mossop A, Segall P (1999). Volume strain within the Geysers geothermal field. *J Geophys Res.*, 104:29113–29131.
- Mossop, A. (2012). An explanation for anomalous time dependent subsidence. In *46th US Rock Mechanics/Geomechanics Symposium*. American Rock Mechanics Association.
- NAM (2015). Wadden Sea Long term Subsidence Studies – Overview report. (available at: <https://nam-feitenencijfers.data-app.nl/download/rapport/2ca6c8d8-c0d4-4c10-8460-672f93b4cdaa?open=true>)
- NAM (2016). Technical Addendum to the Winningsplan Groningen 2016; Production, Subsidence, Induced Earthquakes and Seismic Hazard and Risk Assessment in the Groningen Field., 57 pp, available at <http://www.nam.nl/algemeen/mediatheek-en-downloads/winningsplan-2016.html>.
- NAM (2017). Ensemble Based Subsidence application to the Ameland gas field – long term subsidence study part two (LTS II). Available at <https://nam-feitenencijfers.data-app.nl/download/rapport/2a2da56c-fae-4453-a8a7-c64c43b418a6?open=true>.
- Pijnenburg, R. P. J., Verberne, B. A., Hangx, S. J. T., & Spiers, C. J. (2018). Deformation Behavior of Sandstones From the Seismogenic Groningen Gas Field: Role of Inelastic Versus Elastic Mechanisms. *Journal of Geophysical Research: Solid Earth*, 123 (7), 5532-5558.
- Pijnenburg, R. P. J., Hangx, S. J. T., & Spiers, C. J. (2019). Inelastic deformation of the Slochteren sandstone: Stress-strain relations and implications for induced seismicity in the Groningen gas field. *Journal of Geophysical Research: Solid Earth*, 124 (5), 5254-5282.
- Pruiksma, J. P., Breunese, J. N., van Thienen-Visser, K., & De Waal, J. A. (2015). Isotach formulation of the rate type compaction model for sandstone. *International Journal of Rock Mechanics and Mining Sciences*, 78, 127-132.
- Reggiani, P., & Weerts, A. H. (2008). A Bayesian approach to decision-making under uncertainty: An application to real-time forecasting in the river Rhine. *Journal of Hydrology*, 356(1-2), 56-69.
- Simeoni, U., Tessari, U., Corbau, C., Tosatto, O., Polo, P., Teatini, P. (2017). Impact of land subsidence due to residual gas production on surficial infrastructures: The Dosso degli Angeli field study (Ravenna, Northern Italy). *Engineering Geology*, Volume 229, Pages 1-12, ISSN 0013-7952, <https://doi.org/10.1016/j.enggeo.2017.09.008>.

Spiers, C. J., Hangx, S. J., & Niemeijer, A. R. (2017). New approaches in experimental research on rock and fault behaviour in the Groningen gas field. *Netherlands Journal of Geosciences*, 96(5), s55-s69.

Smith, J. D., Avouac, J.-P., White, R. S., Copley, A., Gualandi, A., & Bourne, S. (2019). Reconciling the long-term relationship between reservoir pore pressure depletion and compaction in the Groningen region. *Journal of Geophysical Research: Solid Earth*, 124, 6165–6178. <https://doi.org/10.1029/2018JB016801>

Tarantola, A. (2005). Inverse problem theory and methods for model parameter estimation (Vol. 89). *SIAM*.

Teatini P., Castelletto, N., Ferronato, M., Gambolati, G., Janna, C., Cairo, E., Marzorati, D., Colombo, D., Ferreti, A., Bagliani, A., Botazzi, F. (2011). Geomechanical response to seasonal gas storage in depleted reservoirs: A case study in the Po River basin, Italy. *J. Geophys. Res.*, 116:F02002. <http://dx.doi.org/10.1029/2010JF001793>.

van Leijen, F., S. Samiei-Esfahany, H. van der Marel, and R. Hanssen (2017). Uniformization of geodetic data for deformation analysis; contribution to the research project: Second phase of the long-term subsidence study in the Wadden Sea region (LTS2). Technical report, Delft University of Technology, Delft, Netherlands.

Van Opstal, G. H. C. (1974). The effect of base-rock rigidity on subsidence due to reservoir compaction. *Proc. 3rd Congr. Int. Soc. Rock Mech*, 2, 1102-1111.

van Thienen-Visser, K., Pruiksma, J. P., & Breunese, J. N. (2015a). Compaction and subsidence of the Groningen gas field in the Netherlands. *Proceedings of the International Association of Hydrological Sciences*, 372, 367-373.

van Thienen-Visser, K., Breunese, J.N., Muntendam-Bos, A.G. (2015b). Subsidence due to gas production in the Wadden Sea: How to ensure no harm will be done to nature. *49th US Rock Mechanics/Geomechanics Symposium*.

Van Eijs, R., & Van der Wal, O. (2017). Field-wide reservoir compressibility estimation through inversion of subsidence data above the Groningen gas field. *Netherlands Journal of Geosciences*, 96(5), S117-S129. doi:10.1017/njg.2017.30.

Vasco D.W., Rutqvist, J., Ferreti, A., Rucci, A., Bellotti, F., Dobson, P., Oldenburg, C., Garcia, J., Walters, M., Hartline, C. (2013). Monitoring deformation at The Geysers geothermal field, California using C-band and X-band interferometric synthetic aperture radar. *Geophys Res Lett.*, <http://dx.doi.org/10.1002/grl.50314>.

Vasco D.W., Rucci, A., Ferreti, A., Novali, F., Bissell, R.C., Ringrose, P.S., Mathieson, A.S., Wright, I.W. (2010). Satellite-based measurements of surface deformation reveal fluid flow associated with the geological storage of carbon dioxide. *Geophys Res Lett.*, 37:L03303.

Zoback, M.D. (2007) Reservoir geomechanics. *Cambridge press*.
www.cambridge.org/9780521770699.

Zhu, L., Gong, H., Li, X., Wang, R., Chen, B., Dai, Z., Teatini, P. (2015). Land subsidence due to groundwater withdrawal in the northern Beijing plain, China. *Engineering Geology*, Volume 193, Pages 243-255, ISSN 0013-7952, <https://doi.org/10.1016/j.enggeo.2015.04.020>.

| Compaction models | | | | | | | | | |
|---------------------|-----------------------------|------------------------------|-------------|---------------------|-------------------|-------------------------|-----------------------------|-----------------------------|----------------|
| Linear | Bilinear | | | Time decay | | Rate type | | | |
| C_m <i>fac</i> | $C_{m_{pre}}$ <i>fac</i> | $C_{m_{post}}$ <i>fac</i> | P_{trans} | C_m <i>fac</i> | $\log_{10}(\tau)$ | C_{m_d} <i>fac</i> | $C_{m_{ref}}$ <i>fac</i> | $\log_{10}(\dot{\sigma}_r)$ | $\log_{10}(b)$ |
| [0.1,3] | [0.1,3] | [1,4] | [100,350] | [0.1,3] | [-2,1] | [0.1,3] | [0.2,0.8] | [-8,-2] | [-3,-1] |

Table 1 Bounded uniform prior distributions for each model parameters used to build each type of compaction models.

| Influence functions | | | |
|---------------------|------------------|-----------------|------------|
| Young's modulus | | Poisson's ratio | |
| $\log_{10}(E_r)$ | $\log_{10}(E_b)$ | ν_r | ν_b |
| [0.7,1.5] | [1.2,5] | [0.15,0.3] | [0.15,0.3] |

Table 2 Bounded uniform prior distributions for each model parameters used to build the semi-analytical influence functions for an elastic two-layers cake subsurface model. The subscript “r” indicates the elastic properties of the top layer (from the ground surface to depth -3800m). The subscript “b” indicates the elastic properties of the bottom layer (from -3800m to an infinite depth).

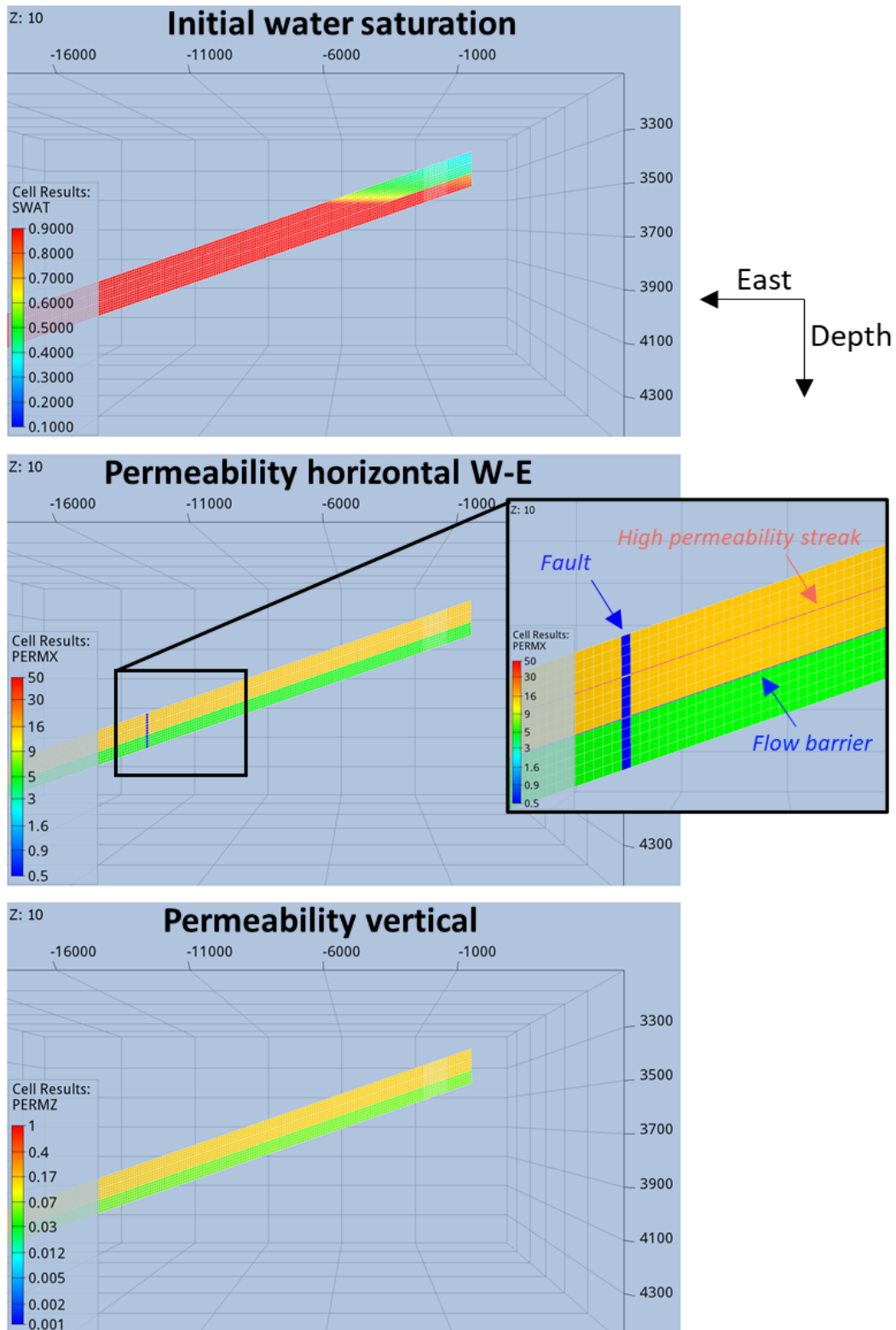


Figure 1 Cross-sections of the reservoir and connected aquifer for one member of the ensemble of flow simulations. Top: initial water saturation (fraction of the pore space occupied by water) of the model indicating the progressive interface between reservoir (west side) and aquifer (east side). Middle/Bottom: horizontal/vertical permeability-structures (in mD).

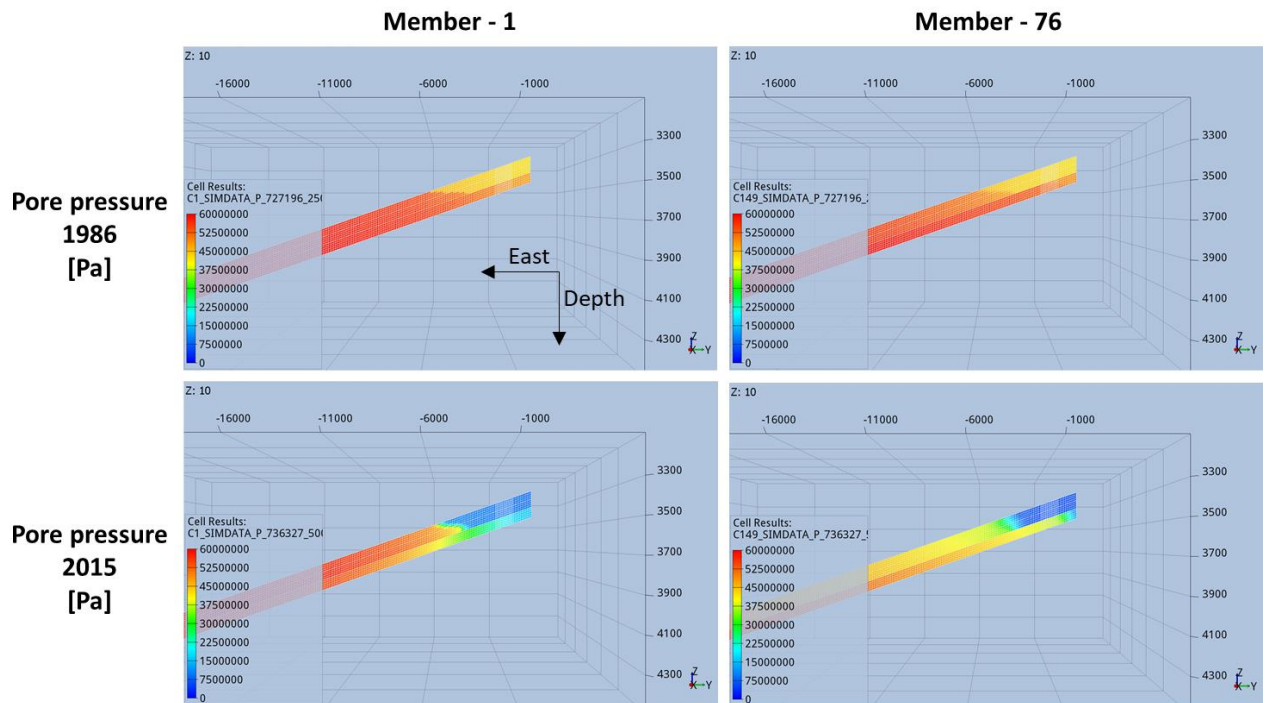


Figure 2 Cross-sections of the pore pressure distribution in the reservoir and connected aquifer for two members of the ensemble of flow simulations. Top: pore pressure pre-production [1986]. Bottom: pore pressure at the end of production [2015].

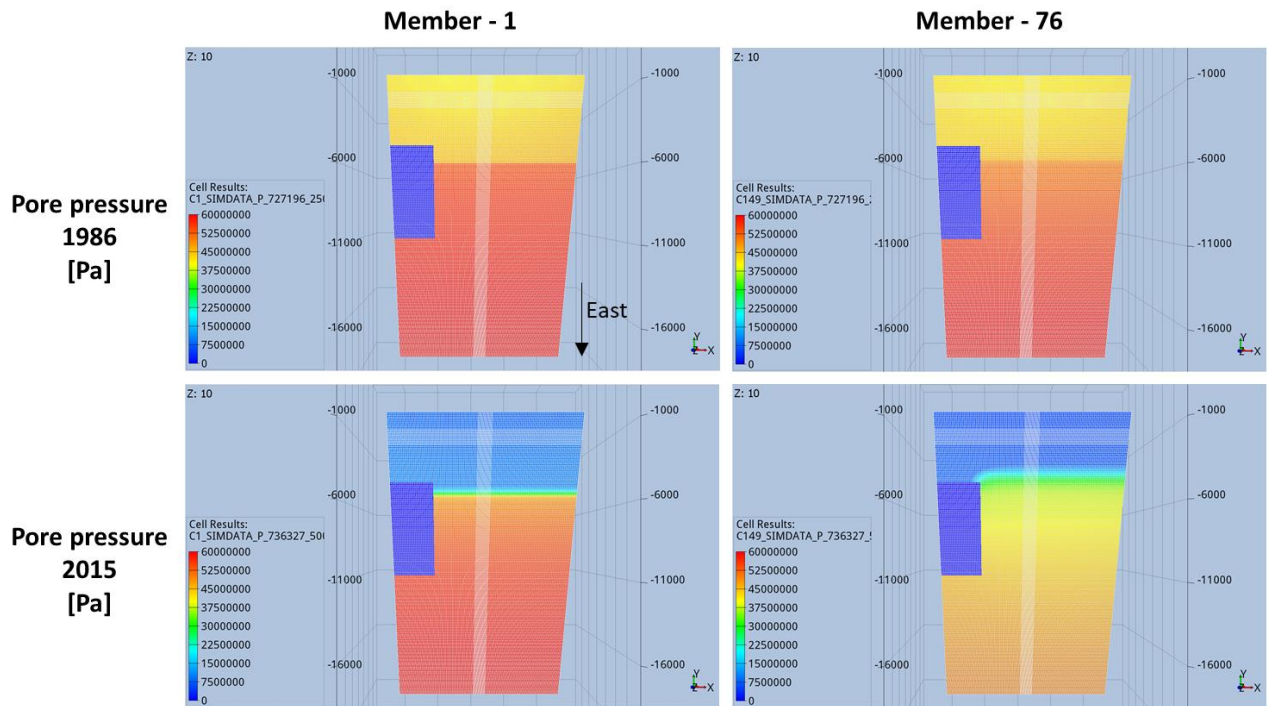


Figure 3 Top-views of the pore pressure distribution in the reservoir and connected aquifer for two members of the ensemble of flow simulations. Top: pore pressure pre-production [1986]. Bottom: pore pressure at the end of production [2015]. The blue rectangle of zero pore pressure, on the south-side of the model, corresponds to an intentionally cropped-volume (non-active zone) intended to mimic the complex geometry of real field cases. Still for the sake of capturing structural complexities of real field cases, east-west and north-south corridors of relatively smaller grid-block volumes are also visible.

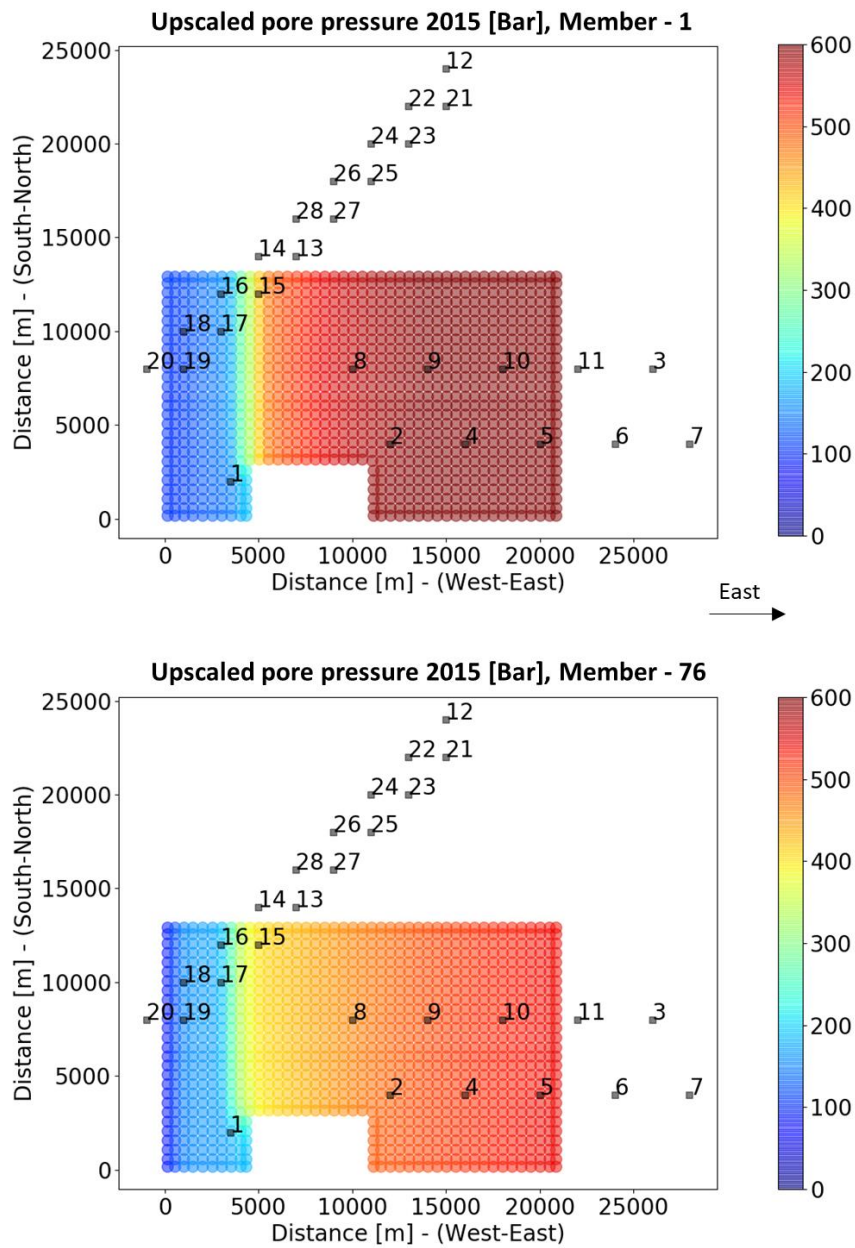


Figure 4 Upscaled pore pressure distributions for two members of the ensemble of flow simulations. The dark rectangles indicate the surface locations of the geodetic benchmarks; their uneven spatial distribution is mimicking real scenarios of the north of the Netherlands.

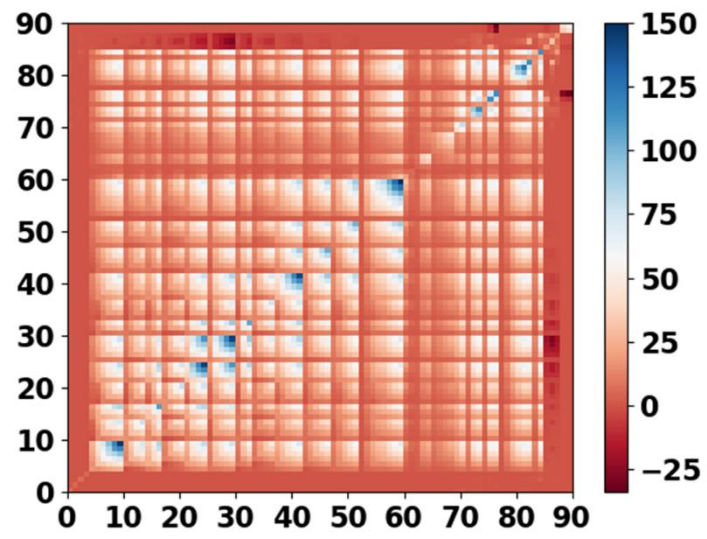


Figure 5 Full covariance matrix of the 90 double differences (in mm^2).

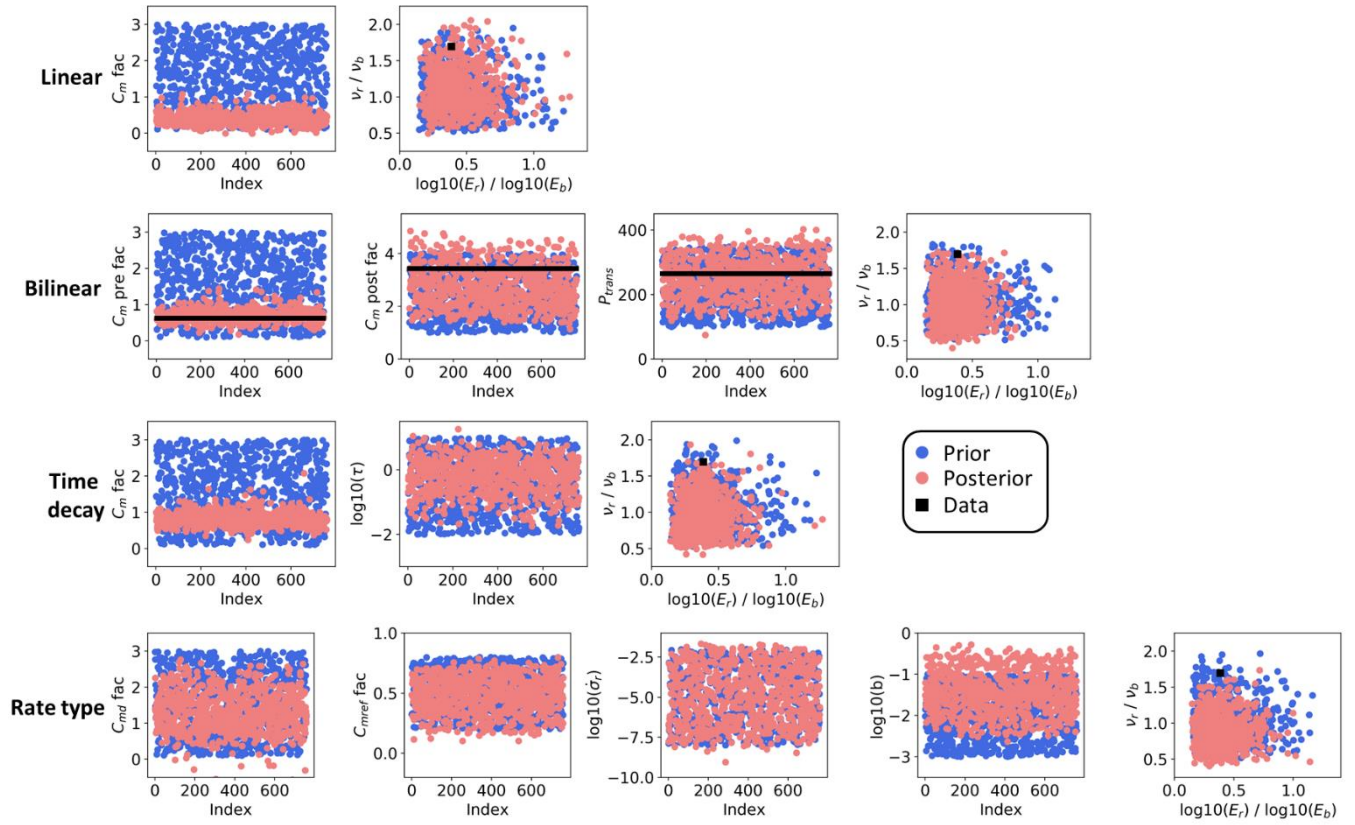


Figure 6 Prior and posterior (following the ES-SS algorithm and for the training period [1986-2008]) ensembles of model parameters.

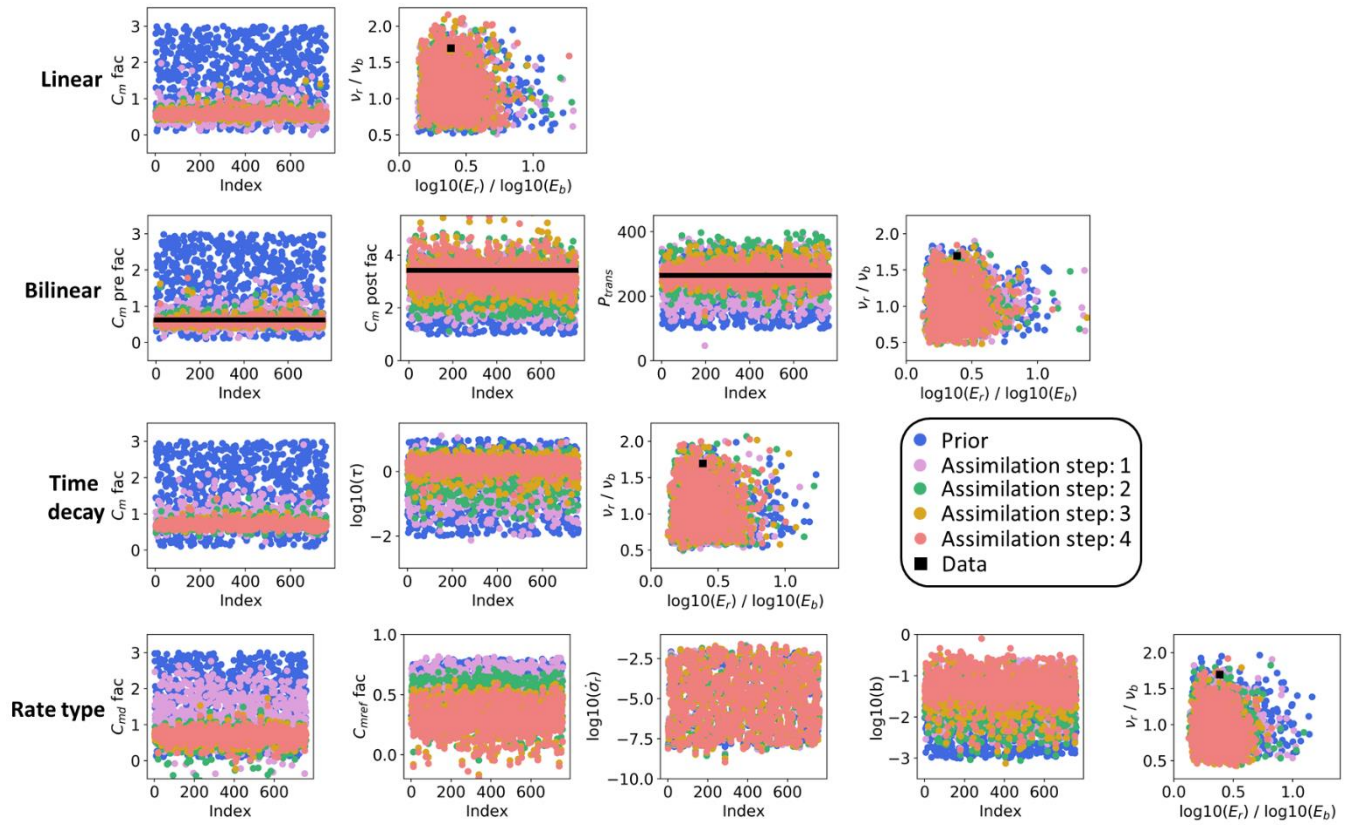


Figure 7 Prior and posterior (following the ES-MDA algorithm and for the training period [1986-2008]) ensembles of model parameters.

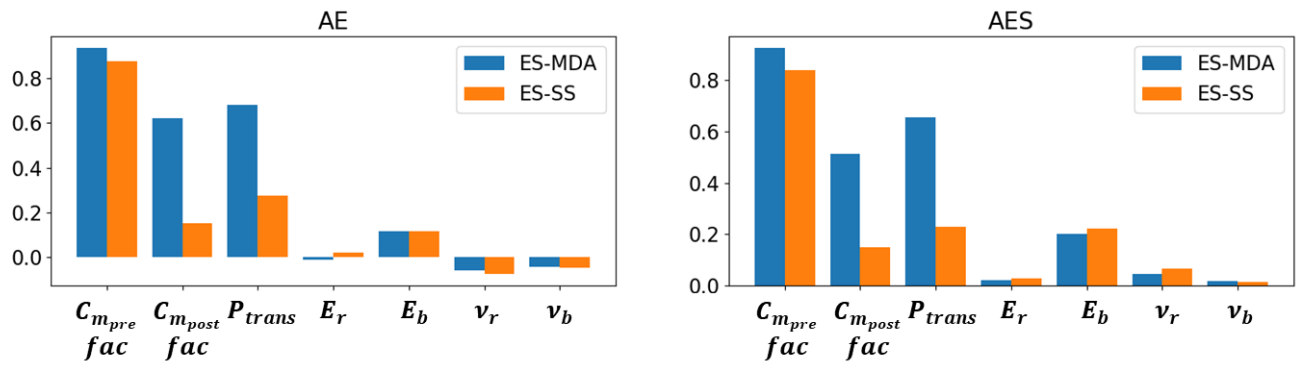


Figure 8 AE and AES performance metrics (over the training period [1986-2008]) for the model parameters of the bilinear ensembles.

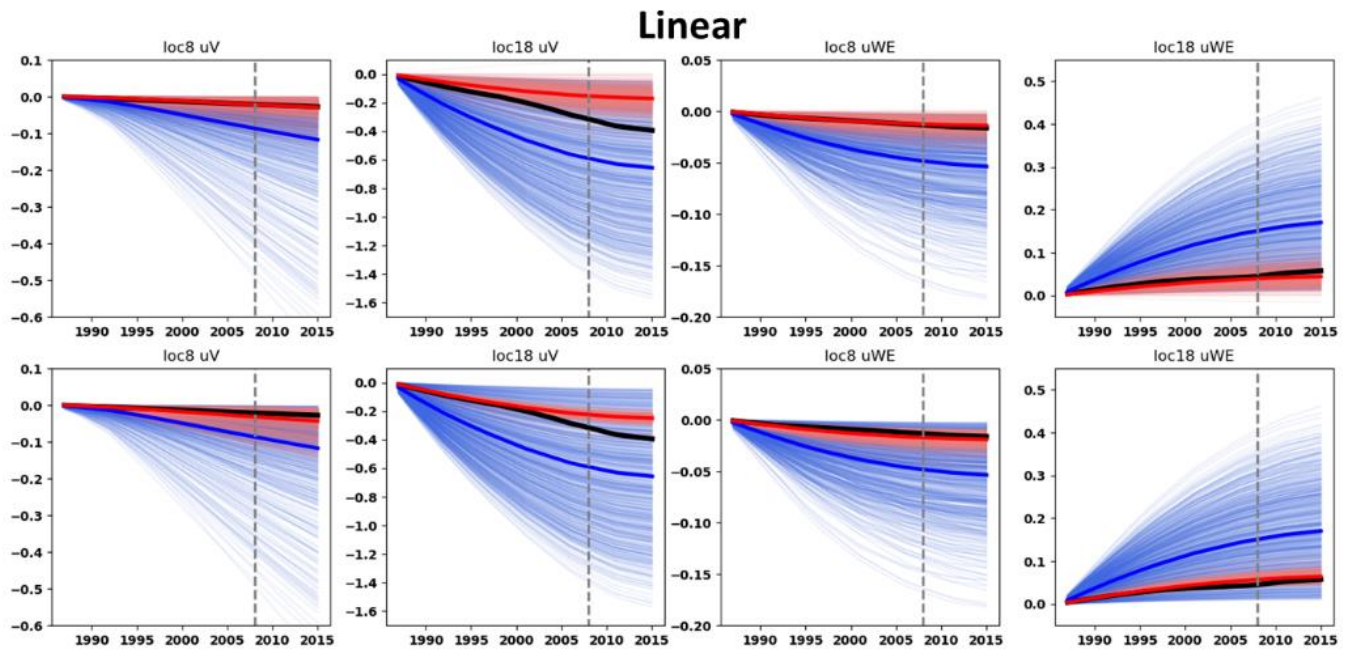


Figure 9 Prior and posterior ground-surface displacements for the linear ensembles. Thin blue curves: prior ensembles. Thin red curves: posterior ensembles. Blue thick curves: mean of the prior ensembles. Red thick curves: mean of the posterior ensembles. Dark thick curves: data. Top row: with the ES-SS algorithm. Bottom row: with the ES-MDA algorithm and with the posterior obtained after four steps of data assimilation. On top of each graph the benchmark location (see [Figure 4](#)) and the component of the ground-surface displacement is indicated. The vertical dashed gray line corresponds to the end of the training period [2008].

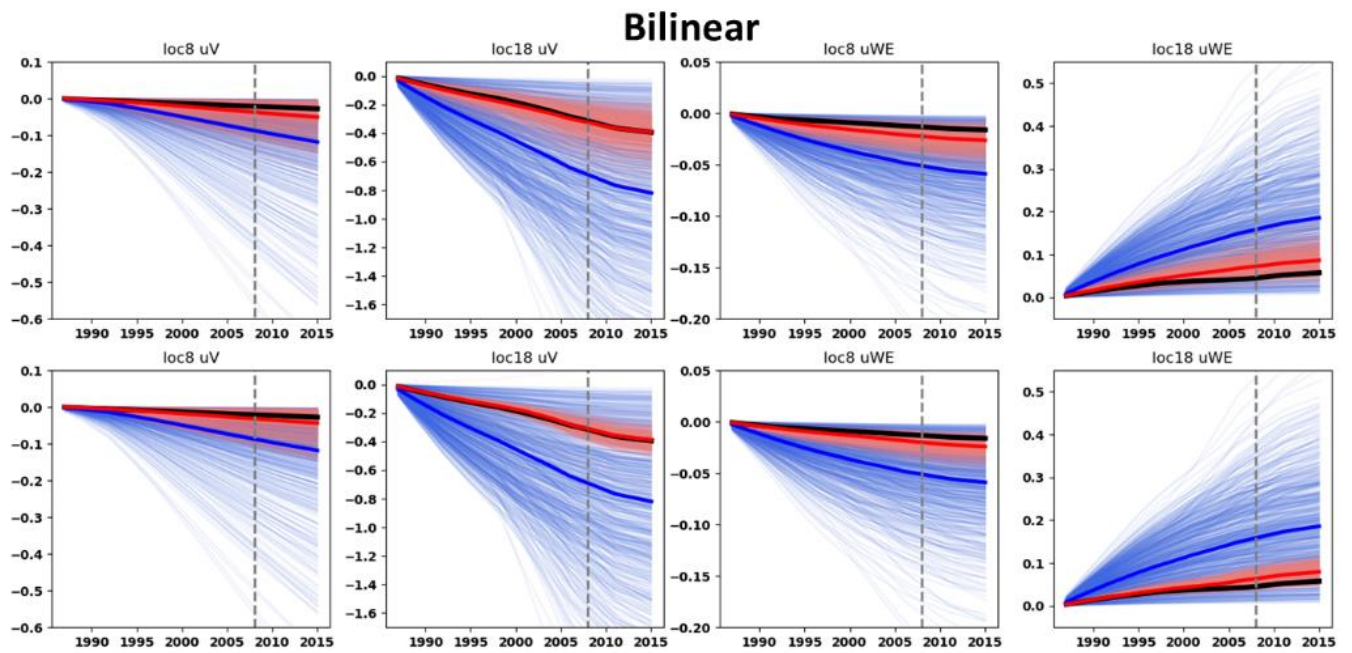


Figure 10 Prior and posterior ground-surface displacements for the bilinear ensembles. Thin blue curves: prior ensembles. Thin red curves: posterior ensembles. Blue thick curves: mean of the prior ensembles. Red thick curves: mean of the posterior ensembles. Dark thick curves: data. Top row: with the ES-SS algorithm. Bottom row: with the ES-MDA algorithm and with the posterior obtained after four steps of data assimilation. On top of each graph the benchmark location (see [Figure 4](#)) and the component of the ground-surface displacement is indicated. The vertical dashed gray line corresponds to the end of the training period [2008].

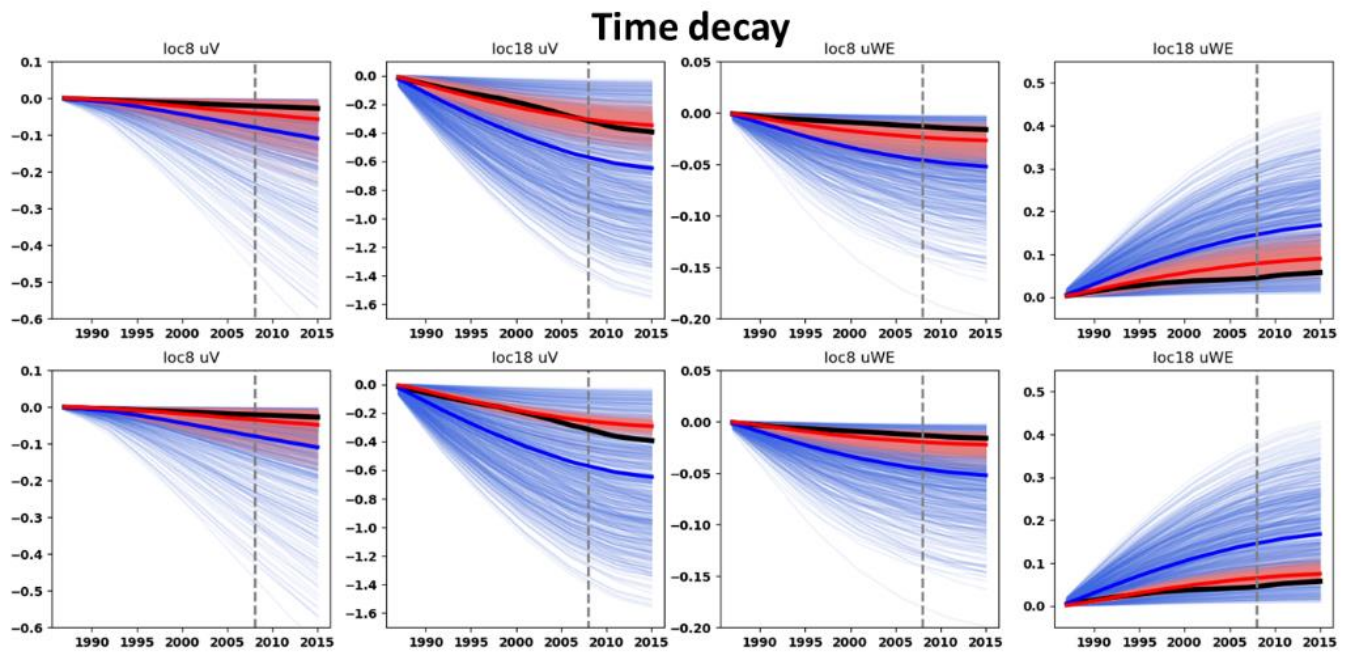


Figure 11 Prior and posterior ground-surface displacements for the time decay ensembles. Thin blue curves: prior ensembles. Thin red curves: posterior ensembles. Blue thick curves: mean of the prior ensembles. Red thick curves: mean of the posterior ensembles. Dark thick curves: data. Top row: with the ES-SS algorithm. Bottom row: with the ES-MDA algorithm and with the posterior obtained after four steps of data assimilation. On top of each graph the benchmark location (see [Figure 4](#)) and the component of the ground-surface displacement is indicated. The vertical dashed gray line corresponds to the end of the training period [2008].

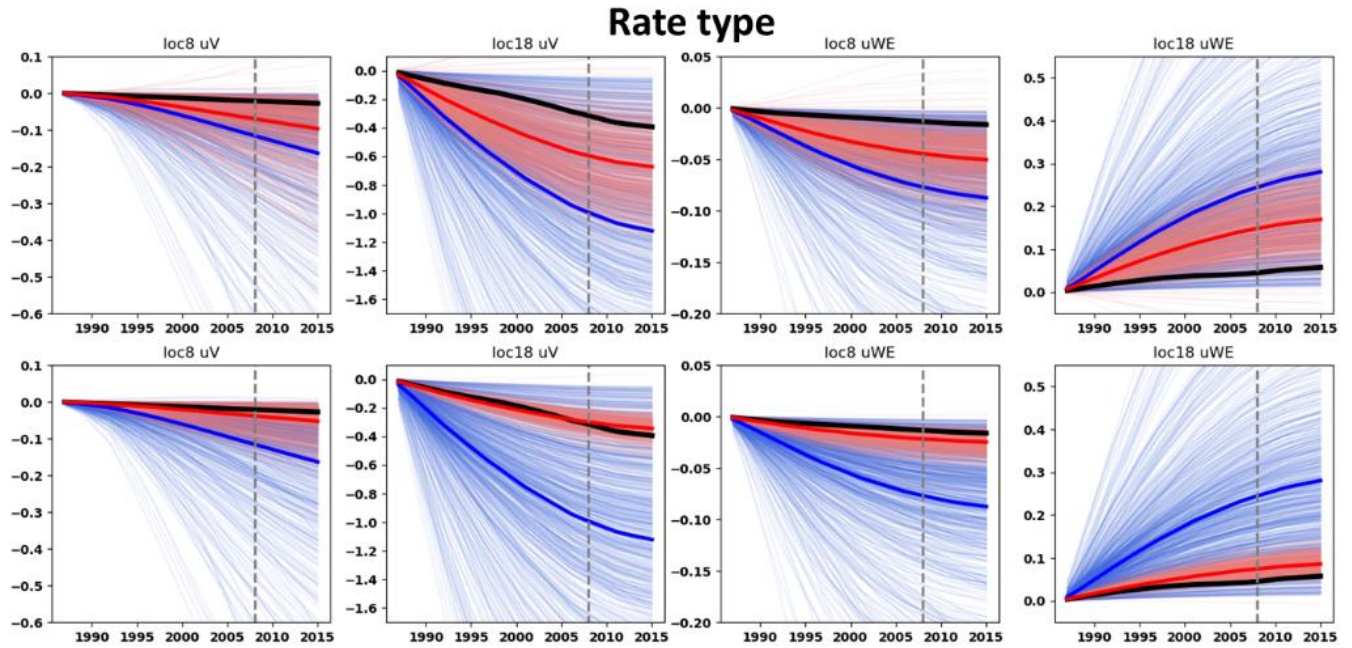


Figure 12 Prior and posterior ground-surface displacements for the rate type ensembles. Thin blue curves: prior ensembles. Thin red curves: posterior ensembles. Blue thick curves: mean of the prior ensembles. Red thick curves: mean of the posterior ensembles. Dark thick curves: data. Top row: with the ES-SS algorithm. Bottom row: with the ES-MDA algorithm and with the posterior obtained after four steps of data assimilation. On top of each graph the benchmark location (see [Figure 4](#)) and the component of the ground-surface displacement is indicated. The vertical dashed gray line corresponds to the end of the training period [2008].

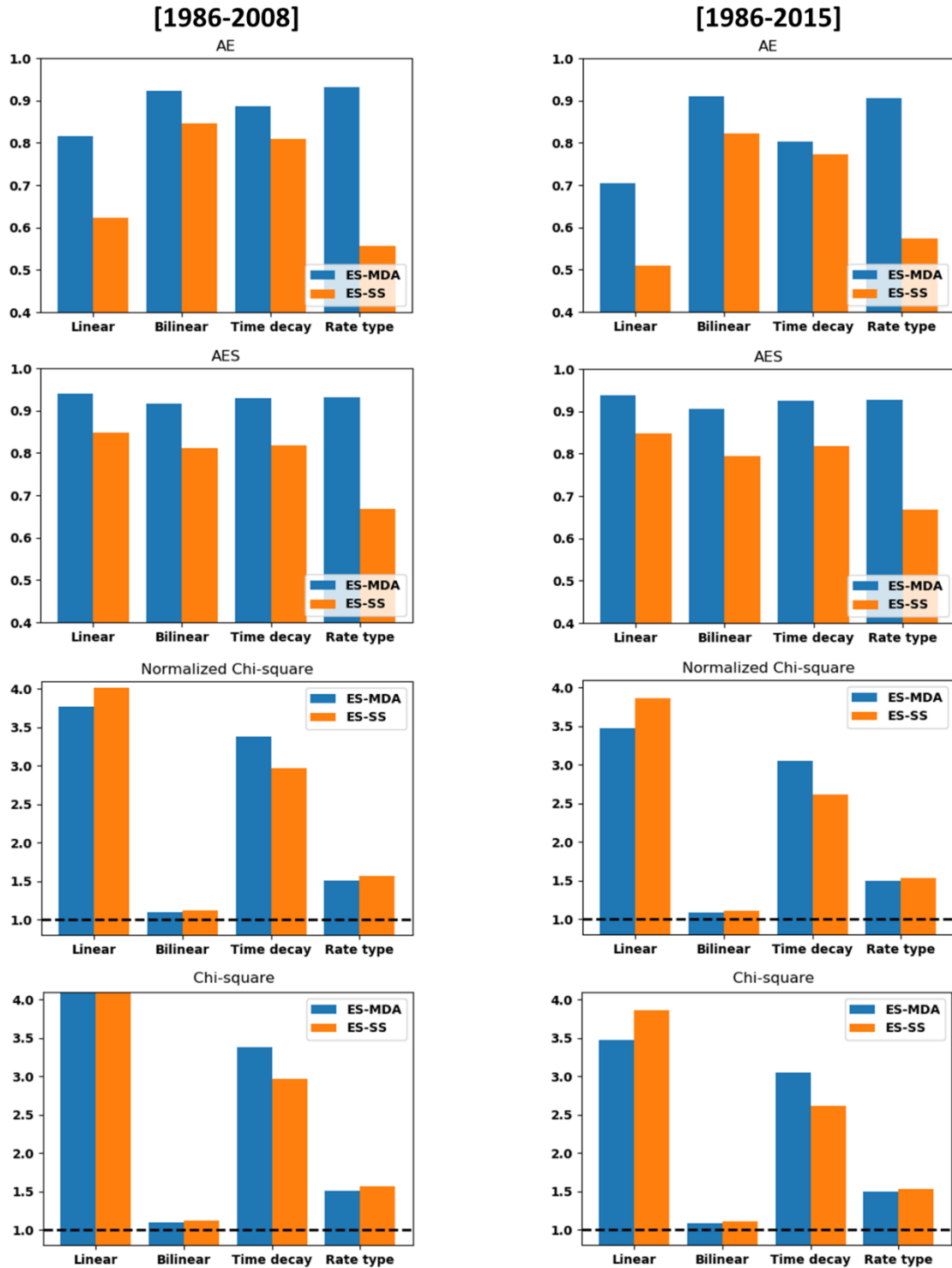


Figure 13 AE, AES, $\frac{\chi_c^2}{N_{dd}}$ and $\frac{\chi^2}{N_{dd}}$ performance metrics for the ensembles of double differences. The horizontal dark dashed lines for the normalized Chi-square and Chi-square graphs indicate an optimum posterior ensemble ($\frac{\chi_c^2}{N_{dd}} = 1$ and $\frac{\chi^2}{N_{dd}} = 1$).