

EarthArXiv coversheet for:

**A high-resolution downscaled CMIP6 projections dataset of essential surface climate variables over the globe coherent with the ERA5-Land reanalysis for climate change impact assessments**

Thomas Noël, Harilaos Loukos, Dimitri Defrance

*Thomas Noël\*, Harilaos Loukos, Dimitri Defrance*

The Climate Data Factory, Paris, France

\*corresponding author :

E-mail: [thomas@theclimatedatafactory.com](mailto:thomas@theclimatedatafactory.com)

This article is a non-peer reviewed preprint version. This preprint is unsubmitted yet to Data In Brief. An update will be done when it will submit for peer review. Looking forward to the publication of the paper in the journal Data In Brief, the citation of this article should use the EarthArXiv DOI: Noël, T.; Loukos, H.; Defrance, D. (n.d.). A high-resolution downscaled CMIP6 projections dataset of essential surface climate variables over the globe coherent with the ERA5-Land reanalysis for climate change impact assessments. <EarthArXiv DOI>

**Article Title**

A high-resolution downscaled CMIP6 projections dataset of essential surface climate variables over the globe coherent with the ERA5-Land reanalysis for climate change impact assessments

**Authors**

Thomas Noël<sup>1</sup>, Harilaos Loukos<sup>1</sup>, Dimitri Defrance<sup>1</sup>, Mathieu Vrac<sup>2</sup> and Guillaume Levvasseur<sup>3</sup>

**Affiliations**

1. The Climate Data Factory, Paris, France
2. Laboratoire des Sciences du Climat et de l'Environnement (LSCE-IPSL), CEA/CNRS/UVSQ, Université Paris-Saclay Centre d'Etudes de Saclay, Orme des Merisiers, 91191 Gif-sur-Yvette, France
3. Institut Pierre Simon Laplace, SU/CNRS, Paris, France

**Corresponding author(s)**

thomas@theclimatedatafactory.com

**Abstract**

A high-resolution climate projections dataset is obtained by statistically downscaling climate projections from the CMIP6 experiment using the ERA5-Land reanalysis from the Copernicus Climate Change Service. This global dataset has a spatial resolution of  $0.1^\circ \times 0.1^\circ$ , comprises 5 climate models and includes two surface daily variables at monthly resolution: air temperature and precipitation. Two greenhouse gas emissions scenarios are available: one with mitigation policy (SSP1-2.6) and one without mitigation (SSP5-8.5). The downscaling method is a Quantile Mapping method (QM) called the Cumulative Distribution Function transform (CDF-t) method that was first used for wind values and is now referenced in dozens of peer-reviewed publications. The data processing includes quality control of metadata according to the climate modelling community standards and value checking for outlier detection.

**Keywords**

High-resolution, projections, CMIP6, ERA5-Land, downscaling, climate change, adaptation, impact modelling.

**Specifications Table**

<b>Subject</b>	Climatology; Global and Planetary Change
<b>Specific subject area</b>	Climate change; Natural disasters.  Evolution of temperature, precipitation and others climate variables
<b>Type of data</b>	Data Cube (Raster X Time) in NetCDF
<b>How data were acquired</b>	CMIP6 model projections data were obtained from the Copernicus Climate Change Service and Earth System Grid Federation data nodes. A statistical downscaling trend-preserving method (CDFt) was applied using the ERA5-Land reanalysis for calibration.
<b>Data format</b>	Netcdf: is a set of software libraries and self-describing, machine-independent data formats that support the creation, access, and sharing of array-oriented scientific data (use in Atmospheric and Oceanic sciences).
<b>Parameters for data collection</b>	Statistical downscaling with the CDFt method and ERA5-Land reanalysis historical data: 0.1° × 0.1° spatial resolution, calibration period 1981–2010, historical and future period from 1951 to 2100 for 5 models and 2 scenarios (SSP1-2.6 and SSP5-8.5), monthly temporal resolution, raster data.
<b>Description of data collection</b>	Simulated mean near-surface air Temperature and precipitation data from 5 climate models downloaded at the Earth System Model Grid Federation ( <a href="https://esgf-node.ipsl.upmc.fr/search/cmip6-ipsl/">https://esgf-node.ipsl.upmc.fr/search/cmip6-ipsl/</a> ) and Copernicus Climate Change Service ( <a href="https://cds.climate.copernicus.eu">https://cds.climate.copernicus.eu</a> ) including the ERA5-Land reanalysis data for the period 1981-2010 and the same variables.
<b>Data source location</b>	Global scale, including land ocean surface

<b>Data accessibility</b>	Accessible through Earth System Grid Federation (ESGF) under research only license at <a href="https://esgf-node.ipsl.upmc.fr/projects/c3s-cmip6-adjust/">https://esgf-node.ipsl.upmc.fr/projects/c3s-cmip6-adjust/</a>
<b>Related research article</b>	<p>Michelangeli, P. A., Vrac, M., &amp; Loukos, H. (2009). Probabilistic downscaling approaches: Application to wind cumulative distribution functions. <i>Geophysical Research Letters</i>, 36(11), <a href="#">GL038401</a>.</p> <p>Vrac, M., Noël, T., &amp; Vautard, R. (2016). Bias correction of precipitation through Singularity Stochastic Removal: Because occurrences matter. <i>Journal of Geophysical Research: Atmospheres</i>, 121(10), 5237-5258.</p>

**Value of the Data**

- The high resolution, number of models and variables available offer a great opportunity for both researchers and climate change adaptation practitioners to study climate change features and feed this data into impact models for any region around the world.
- The dataset is obtained by statistically downscaling climate projections from the CMIP6 experiment using the ERA5-Land reanalysis from the Copernicus Climate Change service, a data product extensively used around the world for historical climate analysis. A great advantage of this dataset is thus to provide an extension of the ERA5-Land reanalysis into the future.
- The dataset is global, has a spatial resolution of 0.1°x 0.1°, comprises 5 climate models allowing to address model uncertainty and includes 2 surface daily variables at monthly resolution: mean air temperature and precipitation.
- To sample future climate uncertainty from anthropogenic forcing, two greenhouse gas emissions scenarios are available: one with mitigation policy (SSP1-2.6) and one without mitigation (SSP5-8.5).

**1. Data Description**

The high-resolution climate projections dataset covers the globe at a 0.1°x0.1° spatial resolution and at monthly temporal resolution for five surface variables. It comprises 5 models (see table 1) from the CMIP6 experiment [1] with simulations for the historical period (1951-2014) and the 21st century (2015 to 2100) under two emissions scenarios: one with mitigation policy (Shared Socioeconomic Pathway 1-2.6 or SSP1-

2.6 ) and one with no mitigation (Shared Socioeconomic Pathway 5-8.5 or SSP5-8.5). The following two land surface are downscaled: mean daily temperature and total precipitation. The combination of models and scenarios represents 10 climate projections including both variables (see table 1). Other variables, models and emissions scenarios could be added in the near future.

The data was produced with a statistical downscaling method using the ERA5-Land reanalysis [2] for calibration and training (see next section for details). The interest of the downscaled data is the removal of model biases at a resolution more compatible with the requirements of assessments and further modelling of the impacts of climate change. In other terms it corrects the climatology (distribution) of model values to make them comparable with a reference observational dataset [3], which in this case is the ERA5-Land reanalysis. In the following subsections, we present the file naming conventions then proceed with an illustration of the bias removal over the historical period and the climate change signal differences at the end of century.

### **1.1 File name conventions**

There is no official Data Reference Syntax (DRS) defined by the climate modeling community for statistically bias-adjusted or downscaled CMIP projections as there is for CMIP6 and CMIP5 projections. However, there is a DRS for CORDEX bias adjusted simulations defined in the context of the EURO-CORDEX experiment. We adapted the EURO-CORDEX DRS for adjusted projections to CMIP6/CMIP5 in order to produce a DRS for CMIP adjusted projections [4].

We kept the term “bias-adjustment” and “adjustment” even if strictly speaking we are producing downscaled projections. The terms “bias-adjusted” and “downscaled” are used interchangeably in the scientific literature because they often involve the same statistical techniques (even though, more recently, bias-adjustment is reserved for cases where the original model resolution is unchanged). We also wanted to use only what was defined by the climate modeling community. On top of this, it appears to us the DRS is sufficient to include all the information needed in the file naming.

The DRS we came up for CMIP6 adjusted projections is presented below through a short illustrative example of file naming:

- data file containing original (uncorrected) model results:

```
tas_day_IPSL-CM6A-LR_ssp126_r1i1p1f1_gr_20160101-20251231.nc
```

where:

- “tas” is the conventional name for surface temperature,
- “day” is the label for frequency (here daily)
- “IPSL-CM6A-LR” is the official name of the climate model,

- “ssp126” is the short name of the used Shared Socioeconomic Pathway,
- “r1lip1f1” is the member number of the simulation,
- “gr” is the grid label of the original data,
- “20160101-20251231” are the start and end date of the simulation.

- bias-adjusted data file (new/modified information in bold)

tas**Adjust**\_Amon\_IPSL-CM6A-LR\_ssp126\_r1i1p1f1\_gr**010**\_TCDF-CDFT23-ERA5Land-1981-2010\_20160101-202512.nc

where:

- “Adjust” is added to the variable conventional name,
- “mon” is the temporal resolution of the data (here monthly),
- “gr010” is the grid label of the downscaled data,
- “TCDF” is the short name of the organization that performed the post-processing,
- “CDFT23” is the label referencing the method,
- “ERA5Land” the short name of the data set used as observations,
- “1981-2010” is the period used for statistical calibrating the method.

The complete list of the data files is given in Annex 1.

## **1.2 Differences between interpolated and downscaled data with reanalysis data**

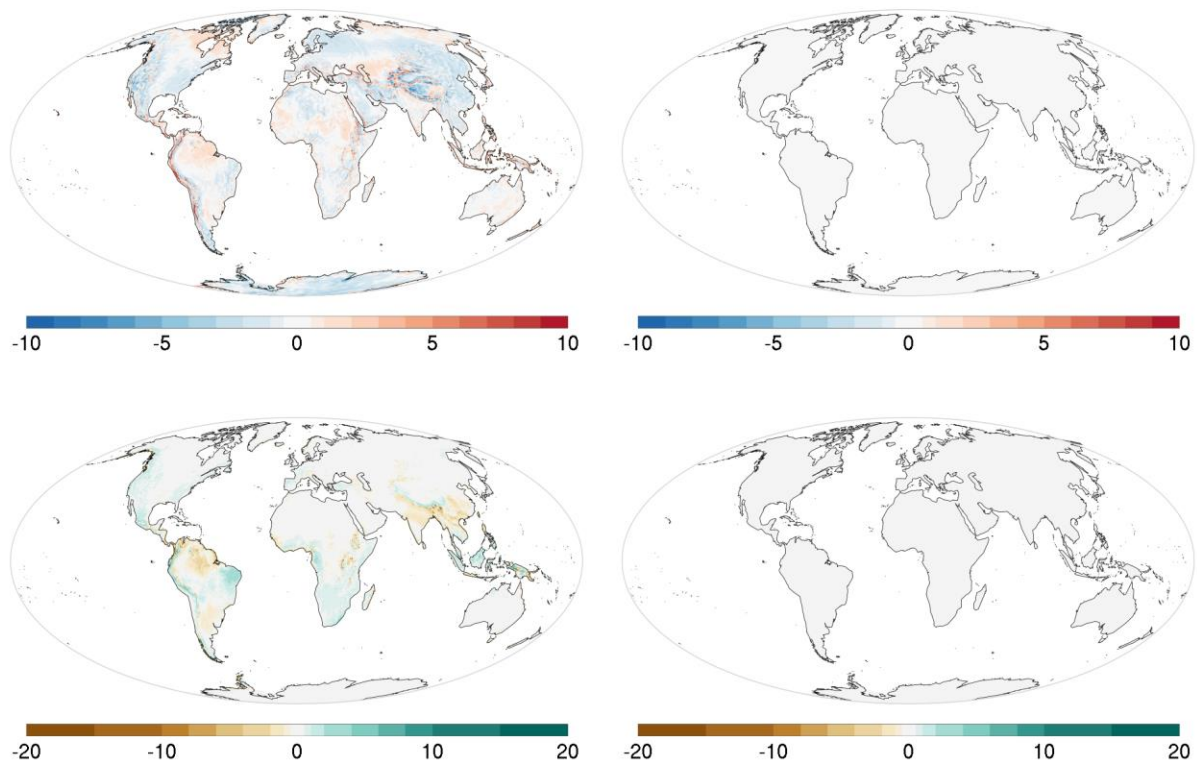
Here we compare the differences with the ERA5-Land reanalysis of both the original model (interpolated on the reanalysis grid and referred to as “interpolated”) and downscaled simulations (referred to as “downscaled”). We first look at the historical 30-year calibration period (1981-2010) for both daily mean temperature and total precipitation. We also look at the 1951-1980 period but for simulations only (since there is no reanalysis data) to see the differences in a 30-year period different from the calibration period.

In Figure 1, we illustrate the spatial differences between the interpolated (left) and downscaled data (right) over the calibration period. For temperature, the ensemble mean of the five CMIP6 models tends to obtain a temperature bias from -2°C to 1°C with the interpolated data. In some areas as in the Western of northern America, the bias between the model mean and ERA5-Land reaches above +5°C. We can further notice that temperature in mountainous areas (Himalaya and the Andes) is often overestimated

at the top by GCMs because of the poor representation of elevation. For precipitation, there is a good representation of the precipitation amounts with the exception in the tropical area with the interpolated data. In Asia, the monsoon precipitation amounts are underestimated in China and India but an overestimation to the adjacent area is highlighted in Indonesia. In South America, the Amazonia basin has an overestimation of the precipitation amounts and in the western part an underestimation. When considering the downscaled data, models have temperature and precipitation comparable to the ERA5-Land reanalysis over the world.

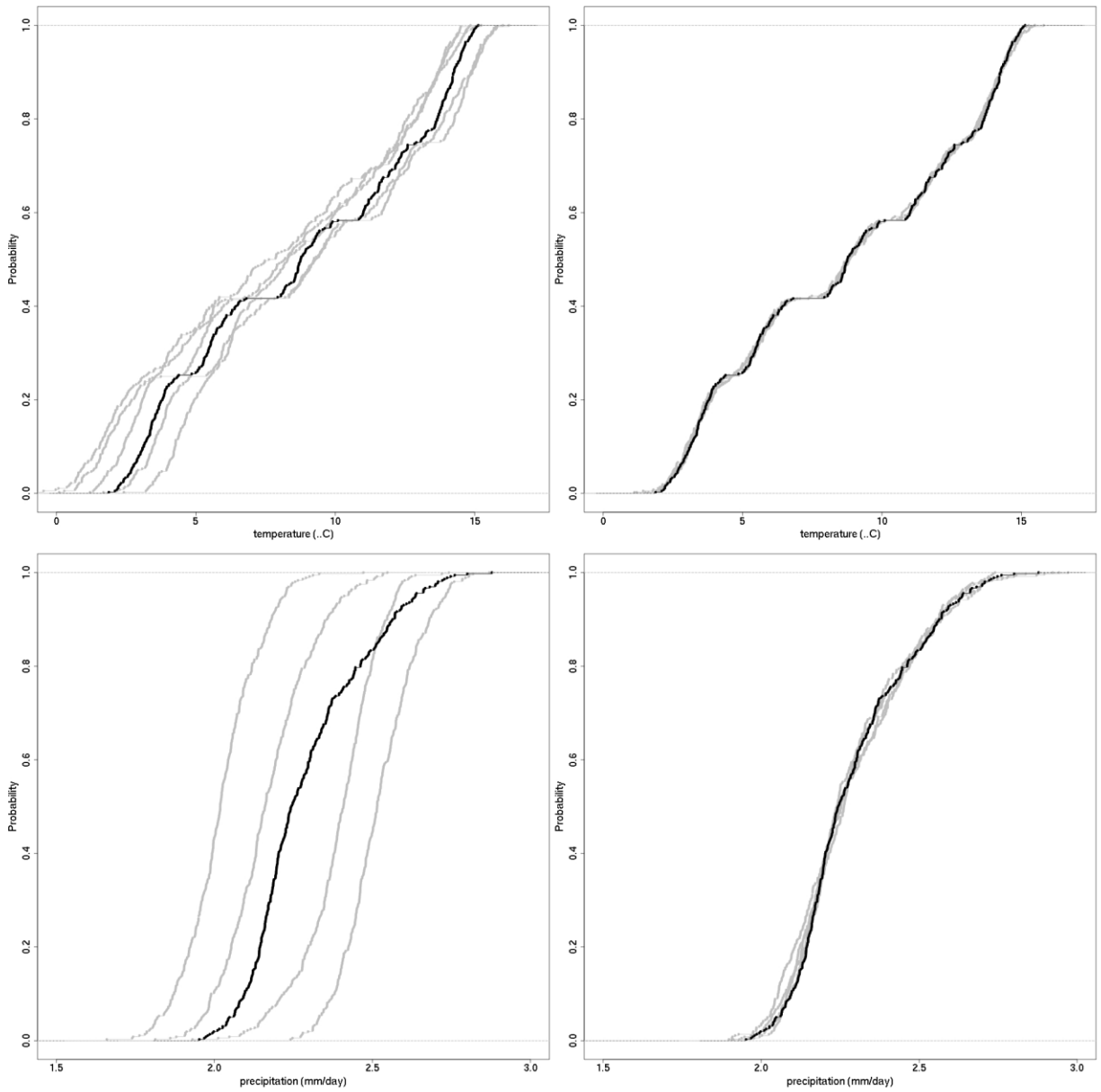
In Figure 2a, the cumulative distributions functions (CDFs) are empirically estimated from monthly values averaged on the globe for the interpolated (left) and for downscaled data (right) over the calibration period. There is a spread between the ERA5-Land reanalysis and the interpolated data with overestimations and underestimations. This spread is more important for precipitation than for the temperature. For downscaled data, the difference between the simulations CDFs and observation CDFs is very diminished. However, for precipitation, we observe small differences for low monthly precipitation amounts. This is due to the fact that downscaling is performed at a daily scale and grid point by grid point, while CDFs are estimated on monthly and spatially-averaged data. The day-to-day (temporal) and spatial variability of the model data are preserved by the downscaling method, however residual biases can appear on monthly and spatial averages.

Figure 2b, is the same as Figure 2a but over the 1951-1980 period. We can see the same type of changes between the interpolated and downscaled data and of features among the variables as over the calibration period. In the interpolated data, the spread of cumulative distributions is similarly more important for precipitation than for temperature. The reduction of CDFs spread in the downscaled data is more pronounced for temperature than precipitation.

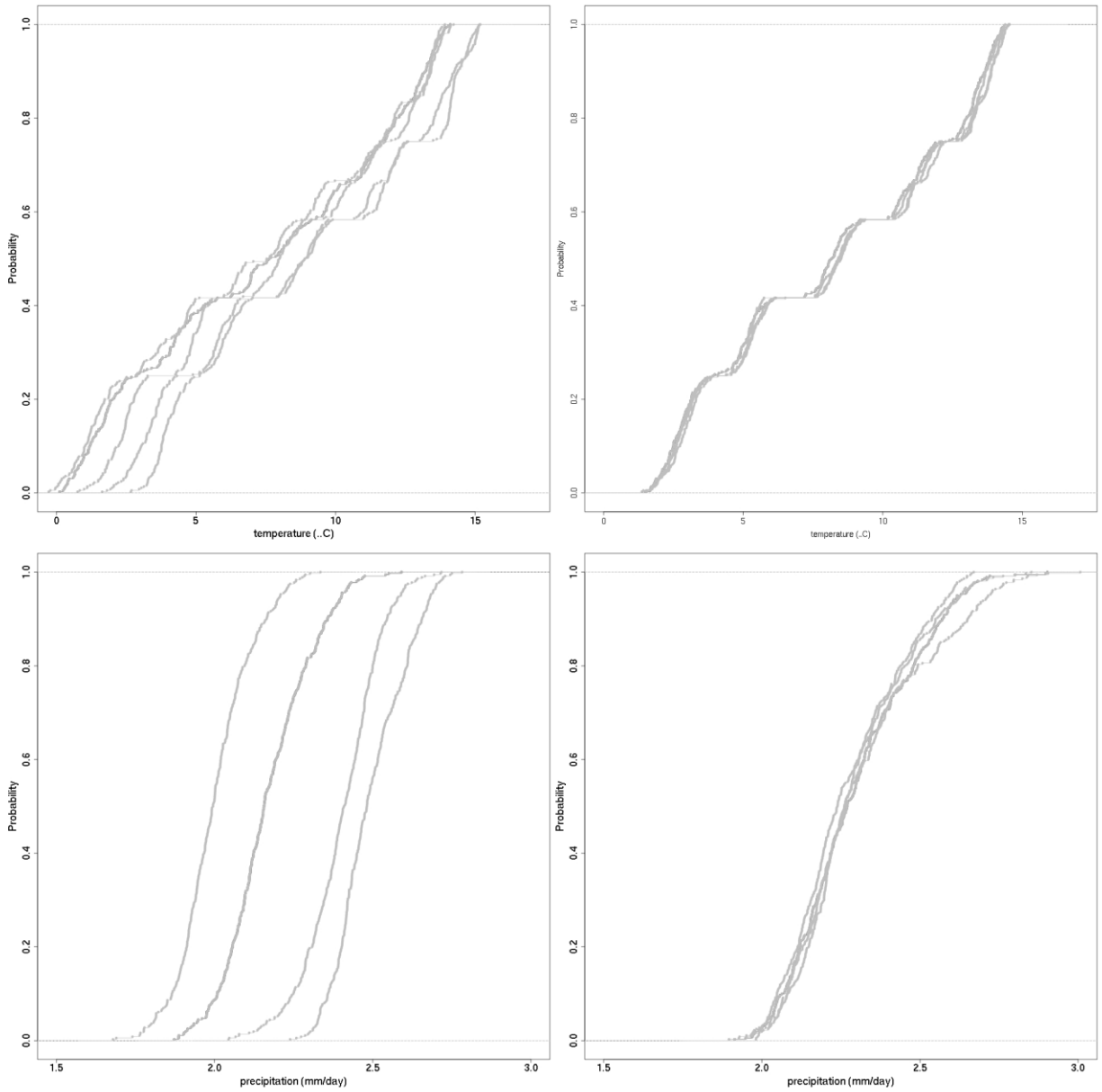


*Fig 1. Comparison between the interpolated data and the downscaled data averaged over the calibration period (1981-2010), for temperature ( $^{\circ}\text{C}$ ) (top) and precipitation (mm/day) (bottom). Difference between the interpolated and reanalysis data (left) and the downscaled and reanalysis data (right).*





*Fig 2a. Cumulative distribution functions of global domain mean monthly averages over the calibration period (1981-2010), for temperature (top) and precipitation (bottom). In grey results for each model for interpolated data (left) and for downscaled data (right) and in black the ERA5-Land reanalysis.*

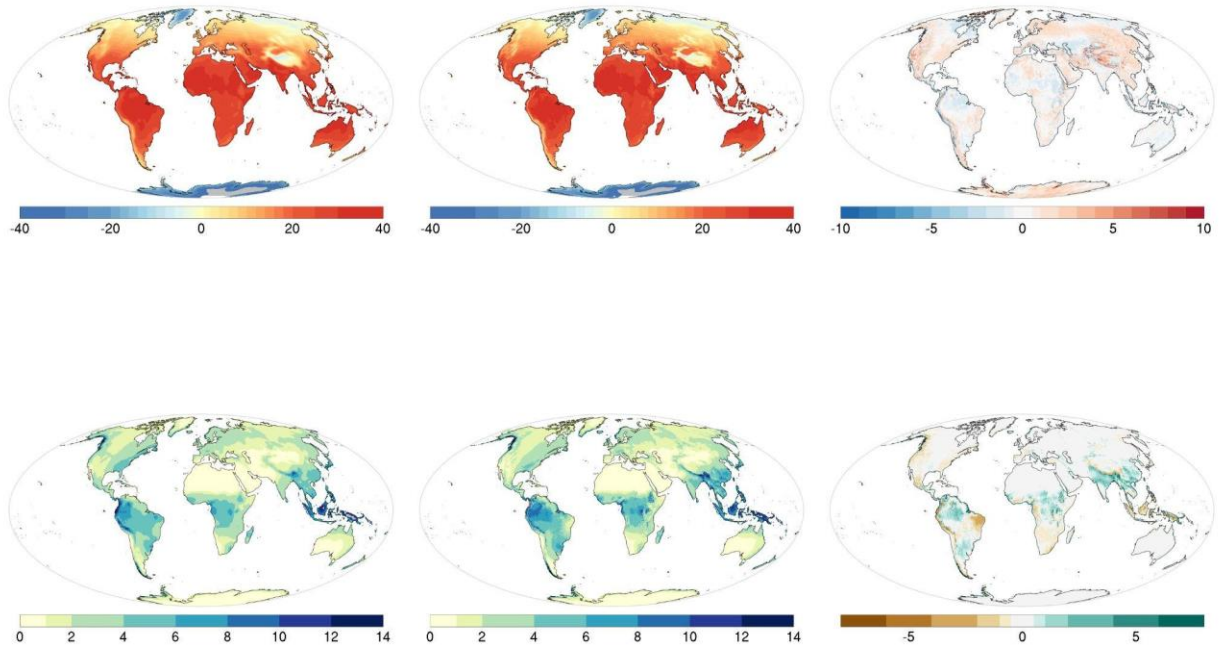


*Fig 2B. Cumulative distribution functions of global domain mean monthly averages over the validation period (1951-1980), for temperature (top) and precipitation (bottom). In grey results for each model for interpolated data (left) and for downscaled data (right).*

### **1.3 Changes at the end of the century after downscaling**

Here we illustrate changes by the end of the century over the 2071-2100 period under scenario SSP5-8.5, comparing the interpolated and downscaled simulations. The analyses are based on daily mean temperature, total precipitation and surface wind speed.

On the maps of Figure 3, we show the spatial difference between interpolated and downscaled data of the ensemble mean. For temperature, the entire world is affected with a difference of some degrees, the effect of downscaling is stronger observed mainly in mountainous regions as in the Himalayan massif, the Andes and in the Rockies. For precipitation, we can see severe bias in the tropic areas with overestimation in the Northern part (West Africa, Asia) and underestimation in the Southern Amazonia basin, ,, and Indonesia.. In extra-tropical areas, the corrections are smaller between -2 and +2 mm/day.



*Fig 3. Changes of the ensemble mean averaged over the end of the century (2071-2100), for temperature ( $^{\circ}\text{C}$ ) (top) and precipitation (mm/day) (bottom). Interpolated data (left), downscaled data (center), and difference between downscaled and interpolated data (right).*

## 2. Experimental Design, Materials and Methods

Four datasets are used in this work:

- The reanalysis data that is used as reference for calibrating the statistical algorithm over a training period. The reanalysis grid sets the final resolution of the downscaled projections.
- The original model climate projections come in a variety of spatial resolutions (typically between  $2.5^{\circ} \times 2.5^{\circ}$  and  $0.9^{\circ} \times 0.9^{\circ}$ ) and are referred to as “raw”.
- The raw data interpolated on the reanalysis grid and referred to as “interpolated”.
- The downscaled data obtained from the interpolated data and the reanalysis data used for statistical calibration (both on the same grid) and referred as “downscaled”.

The raw and reanalysis data are input data that need to be sourced. The interpolated data is just an intermediary dataset needed by the methodology while the downscaled data is the final dataset. These datasets correspond to the four steps process (data sourcing, remapping, downscaling, quality control) described below.

### 2.1 Data Sourcing

The reanalysis data is the ERA5-Land reanalysis [2]. ERA5-Land is the latest climate reanalysis being produced by ECMWF as part of implementing the EU- funded Copernicus Climate Change Service (C3S), providing hourly data on atmospheric, land-surface and sea-state parameters together with estimates of uncertainty from 1979 to present day. ERA5-Land data are available on the C3S Climate Data Store on regular latitude-longitude grids at  $0.1^{\circ} \times 0.1^{\circ}$  resolution. We compute the daily data from the ERA5-Land hourly data for all necessary variables.

The climate simulations hail from The Coupled Model Intercomparison Project Phase 6 (CMIP6) experiment [1]. They support the Fifth Assessment Report (AR6) of the Intergovernmental Panel on Climate Change (IPCC). We use projections from 2 emissions scenarios: SSP1-2.6 (mitigation policy aligned with a  $2^{\circ}$  pre Paris agreement target) and SSP5-8.5 (a no mitigation policy). Daily data of necessary variables are extracted from the Copernicus Climate Change Service that hosts a subset of the CMIP6 archive. The data covers the period from January 1<sup>st</sup> 1951 to December 31<sup>st</sup> 2100 (except for some models) with the historical period ending in 2015 and the SSP's starting the following year. All models have different spatial resolutions ranging between  $0.9^{\circ}$  to  $2.5^{\circ}$ .

Because the downscaling procedure requires important computational resources, we used simulations from the 5 climate models that were selected by the Inter-Sectoral Impact Model Intercomparison Project (ISIMIP, [5]): GFDL-ESM4, IPSL-CM6A-LR, MPI-ESM1-2-HR, MRI-ESM2-0, and UKESM1-0-LL. Those five models are considered as a good choice because in terms of climate sensitivity (i.e. magnitude of the warming signal at the end of the century), those five models are good representatives of the whole

CMIP6 ensemble as they include three models with low climate sensitivity (GFDL-ESM4, MPI-ESM1-2-HR, MRI-ESM2-0) and two models with high climate sensitivity (IPSL-CM6A-LR, UKESM1-0-LL).

## **2.2 Remapping**

Remapping is a preliminary task required by the downscaling methodology. It consists in spatially interpolating the raw simulations (between 0.93° and 2.5° resolution) onto the ERA5-Land grid (0.1° x 0.1°). We use the Climate Data Operators (CDO, 2016) software from the Max Planck Institute that gathers various algorithms for interpolation used by the scientific community. Daily temperature (mean, minimum, maximum) and daily wind speed are interpolated with a bicubic method. Daily precipitation is interpolated sequentially (to 1.5° then to 0.75°, and then 0.1°) with a conservative method.

## **2.3 Downscaling**

The downscaling method applied here is a Quantile mapping-based method (QM) called the Cumulative Distribution Function transform (CDF-t) method [6–110]. CDF-t was first developed for wind values and is now referenced in dozens of peer-reviewed publications to downscale different sets of data and variables (e.g. [11–13]). QM methods relate the cumulative distribution function of a climate variable at large scale (e.g., from the GCM) to the CDF of the same variable at a local scale (e.g., from the reanalysis). They are increasingly popular in climate applications although bias correction methods have received criticism (e.g.[14]). For a review of recent QM methods see [3]. In our case the variables are downscaled at a daily resolution over the 1951-2100 period using 1981-2010 as calibration period. The precipitation variable is downscaled with a specific version of CDF-t referred to as “Singularity Stochastic Removal” (SSR) which considers rainfall occurrence and intensity challenges [15]. The last step is to average daily values into monthly ones to construct the dataset.

## **2.4 Standardization**

Standardization consists in rewriting output data files and related metadata to comply with standards used by the climate modeling community (e.g., the Climate and Forecast metadata convention and the Data Reference Syntax). We use the Climate Model Output Rewriter 2 (CMOR 2) library.

## **2.5 Quality control**

We conduct two types of quality control. The first one is technical and consists in verifying data compliance with climate community's standards, data consistency and metadata. Doing quality control is crucial for the data publication process and data re-use. The second quality control is a value check to check for outlier values in the downscaled data.

### **Technical quality control**

We use the Quality Assurance tool (QA-DKRZ, <https://readthedocs.org/projects/qa-dkrz>) developed by the Deutsches Klimarechenzentrum (DKRZ) to check conformance of meta-data of climate simulations given in NetCDF format with conventions and rules of projects. During the Quality Assurance process of the DKRZ, the following criteria are checked:

1. Number of datasets is correct and  $> 0$
2. Size of every dataset is  $> 0$
3. The datasets and corresponding metadata are accessible
4. The data sizes are controlled and correct
5. The spatial-temporal coverage description "metadata" is consistent with the data,
6. Time steps are correct and the time coordinate is continuous
7. The format is correct
8. Variable description and data are consistent

### **Value quality control**

The value quality control is built with CDO and NCO tools and consists in:

- Analyzing the difference between the downscaled values and the observations over the reference period.
- Analyzing the time evolution difference between downscaled and original model.

### **Difference between downscaled model and observations**

First, we estimate two quantities:

- The average for each month over the reference period of the observations.
- The average for each month over the reference period of the downscaled model.

We then estimate the difference between these two quantities for every month. For each month we take the 10th and 90th quantiles. That gives 12 values for each quantile.

Finally, we verify that these 12 values are comprised in the following ranges (unpublished, R. Vautard personal communication):

- Temperature between  $[-1 ; 1]$  in K.
- Precipitation between  $[-0.5 ; 0.5]$  in mm.day-1.

These values are relatively small and allow only low discrepancies since modifications should be small over the historical period (inherently over the calibration period). If values are outside the range, the script raises an error and the simulation is rejected and thus not included in the dataset.

### **Difference of evolutions between downscaled model and original model**

First, we estimate four quantities:

- Average for each season in the reference period for the original model.
- Average for each season in the reference period for the downscaled model.
- Average for each season in the future period (2071-2100) for the original model.
- Average for each season in the future period (2071-2100) for the downscaled model.

Then, for each season, we compute the evolution between future and reference periods for the original and downscaled model. We estimate the difference between them and get 4 files in output (one per

season). For each season (i.e. for each file), we take the 10th and 90th quantiles of the differences. That gives 4 values for each quantile.

Finally, we control these 4 values are comprised in the following range (unpublished, R. Vautard personal communication):

- Temperature between [-2 ; 2] in K.
- Precipitation between [-1 ; 1] in mm.day-1.

In this case, values are higher than previously to account for higher discrepancies but small enough to avoid unrealistic changes. If values are outside the range, the quality control raises an error and the simulation is rejected and thus not included in the dataset.

### **CRedit author statement**

T.N.: methodology, software, data curation; H.L.: supervision, funding acquisition and writing revue and editing; D.D.: writing original draft, visualization, M.V.: methodology, writing revue and editing; G.L.: resources, software.

### **Acknowledgments**

To process the data, this study benefited from the IPSL mesocenter ESPRI facility that is supported by CNRS, SU, and Ecole Polytechnique partly funded by IS-ENES3 project. We also thank the Institut Pierre Simon Laplace for assistance with the Synda software and the Deutsches Klimarechenzentrum for the Quality Assurance tool.

### **Declaration of Competing Interest**

The authors declare that they have no known competing financial interests or personal relationships that have or could be perceived to have influenced the work reported in this article.



## References

- [1] V. Eyring, S. Bony, G.A. Meehl, C.A. Senior, B. Stevens, R.J. Stouffer, K.E. Taylor, Overview of the Coupled Model Intercomparison Project Phase 6 (CMIP6) experimental design and organization, *Geosci. Model Dev.* 9 (2016) 1937–1958. <https://doi.org/10.5194/gmd-9-1937-2016>.
- [2] J. Muñoz Sabater, ERA5-Land monthly averaged data from 1981 to present, Copernicus Clim. Chang. Serv. Clim. Data Store. (2019). <https://doi.org/10.24381/cds.68d2bb3>.
- [3] S. Galmarini, A.J. Cannon, A. Ceglar, O.B. Christensen, N. de Noblet-Ducoudré, F. Dentener, F.J. Doblas-Reyes, A. Dosio, J.M. Gutierrez, M. Iturbide, M. Jury, S. Lange, H. Loukos, A. Maiorano, D. Maraun, S. McGinnis, G. Nikulin, A. Riccio, E. Sanchez, E. Solazzo, A. Toret, M. Vrac, M. Zampieri, Adjusting climate model bias for agricultural impact assessment: How to cut the mustard, *Clim. Serv.* 13 (2019) 65–69. <https://doi.org/10.1016/j.cliser.2019.01.004>.
- [4] T. Noël, G. Levavasseur, Data Reference Syntax (DRS) for bias-adjusted C3S-CMIP5 simulations, *EarthArXiv*, 2021. <https://doi.org/10.31223/X5389H>.
- [5] S. Lange, ISIMIP3b bias adjustment fact sheet, (2021) 40. <https://www.isimip.org/gettingstarted/isimip3b-bias-correction/> (accessed September 8, 2021).
- [6] P. Michelangeli, M. Vrac, H. Loukos, Probabilistic downscaling approaches: Application to wind cumulative distribution functions, *Geophys. Res. Lett.* 36 (2009) L11708. <https://doi.org/10.1029/2009GL038401>.
- [7] M. Vrac, P. Drobinski, A. Merlo, M. Herrmann, C. Lavaysse, L. Li, S. Somot, Dynamical and statistical downscaling of the French Mediterranean climate: uncertainty assessment, *Nat. Hazards Earth Syst. Sci.* 12 (2012) 2769–2784. <https://doi.org/10.5194/nhess-12-2769-2012>.
- [8] R. Vautard, T. Noël, L. Li, M. Vrac, E. Martin, P. Dandin, J. Cattiaux, S. Jousaume, Climate variability and trends in downscaled high-resolution simulations and projections over Metropolitan France, *Clim. Dyn.* 41 (2013) 1419–1437. <https://doi.org/10.1007/s00382-012-1621-8>.
- [9] A.M. Famien, S. Janicot, A. Delfin Ochou, M. Vrac, D. Defrance, B. Sultan, T. Noël, A bias-corrected CMIP5 dataset for Africa using the CDF-t method - A contribution to agricultural impact studies, *Earth Syst. Dyn.* 9 (2018) 313–338. <https://doi.org/10.5194/esd-9-313-2018>.
- [10] B. Bartók, I. Tobin, R. Vautard, M. Vrac, X. Jin, G. Levavasseur, S. Denvil, L. Dubus, S. Parey, P.A. Michelangeli, A. Troccoli, Y.M. Saint-Drenan, A climate projection dataset tailored for

the European energy sector, *Clim. Serv.* 16 (2019) 100138.  
<https://doi.org/10.1016/j.cliser.2019.100138>.

- [11] D. Defrance, G. Ramstein, S. Charbit, M. Vrac, A.M. Famien, B. Sultan, D. Swingedouw, C. Dumas, F. Gemenne, J. Alvarez-Solas, J.-P. Vanderlinden, Consequences of rapid ice sheet melting on the Sahelian population vulnerability, *Proc. Natl. Acad. Sci.* 114 (2017) 6533–6538. <https://doi.org/10.1073/pnas.1619358114>.
- [12] D. Defrance, B. Sultan, M. Castets, A.M. Famien, C. Baron, Impact of climate change in West Africa on cereal production per capita in 2050, *Sustain.* 12 (2020) 1–19.  
<https://doi.org/10.3390/su12187585>.
- [13] B. Rhoné, D. Defrance, C. Berthouly-Salazar, C. Mariac, P. Cubry, M. Couderc, A. Dequinsey, A. Assoumanne, N.A. Kane, B. Sultan, A. Barnaud, Y. Vigouroux, Pearl millet genomic vulnerability to climate change in West Africa highlights the need for regional collaboration, *Nat. Commun.* 11 (2020). <https://doi.org/10.1038/s41467-020-19066-4>.
- [14] D. Maraun, Bias Correcting Climate Change Simulations - a Critical Review, *Curr. Clim. Chang. Reports.* 2 (2016) 211–220. <https://doi.org/10.1007/s40641-016-0050-x>.
- [15] M. Vrac, T. Noël, R. Vautard, Bias correction of precipitation through singularity stochastic removal: Because occurrences matter, *J. Geophys. Res.* 121 (2016) 5237–5258.  
<https://doi.org/10.1002/2015JD024511>.

## **Annex 1 – List of data files**

### **Temperature for SSP5-8.5**

tasAdjust\_Amon\_GFDL-ESM4\_ssp585\_r1i1p1f1\_gr010\_TCDF-CDFT23-ERA5Land-1981-2010\_195101-210012.nc  
tasAdjust\_Amon\_IPSL-CM6A-LR\_ssp585\_r1i1p1f1\_gr010\_TCDF-CDFT23-ERA5Land-1981-2010\_195101-210012.nc  
tasAdjust\_Amon\_MPI-ESM1-2-HR\_ssp585\_r1i1p1f1\_gr010\_TCDF-CDFT23-ERA5Land-1981-2010\_195101-210012.nc  
tasAdjust\_Amon\_MRI-ESM2-0\_ssp585\_r1i1p1f1\_gr010\_TCDF-CDFT23-ERA5Land-1981-2010\_195101-210012.nc  
tasAdjust\_Amon\_UKESM1-0-LL\_ssp585\_r1i1p1f2\_gr010\_TCDF-CDFT23-ERA5Land-1981-2010\_195101-210012.nc

### **Precipitation for SSP5-8.5**

prAdjust\_Amon\_GFDL-ESM4\_ssp585\_r1i1p1f1\_gr010\_TCDF-CDFT23-ERA5Land-1981-2010\_195101-210012.nc  
prAdjust\_Amon\_IPSL-CM6A-LR\_ssp585\_r1i1p1f1\_gr010\_TCDF-CDFT23-ERA5Land-1981-2010\_195101-210012.nc  
prAdjust\_Amon\_MPI-ESM1-2-HR\_ssp585\_r1i1p1f1\_gr010\_TCDF-CDFT23-ERA5Land-1981-2010\_195101-210012.nc  
prAdjust\_Amon\_MRI-ESM2-0\_ssp585\_r1i1p1f1\_gr010\_TCDF-CDFT23-ERA5Land-1981-2010\_195101-210012.nc  
prAdjust\_Amon\_UKESM1-0-LL\_ssp585\_r1i1p1f2\_gr010\_TCDF-CDFT23-ERA5Land-1981-2010\_195101-210012.nc

### **Temperature for SSP1-2.6**

tasAdjust\_Amon\_GFDL-ESM4\_ssp126\_r1i1p1f1\_gr010\_TCDF-CDFT23-ERA5Land-1981-2010\_195101-210012.nc  
tasAdjust\_Amon\_IPSL-CM6A-LR\_ssp126\_r1i1p1f1\_gr010\_TCDF-CDFT23-ERA5Land-1981-2010\_195101-210012.nc  
tasAdjust\_Amon\_MPI-ESM1-2-HR\_ssp126\_r1i1p1f1\_gr010\_TCDF-CDFT23-ERA5Land-1981-2010\_195101-210012.nc  
tasAdjust\_Amon\_MRI-ESM2-0\_ssp126\_r1i1p1f1\_gr010\_TCDF-CDFT23-ERA5Land-1981-2010\_195101-210012.nc  
tasAdjust\_Amon\_UKESM1-0-LL\_ssp126\_r1i1p1f2\_gr010\_TCDF-CDFT23-ERA5Land-1981-2010\_195101-210012.nc

### **Precipitation for SSP1-2.6**

prAdjust\_Amon\_GFDL-ESM4\_ssp126\_r1i1p1f1\_gr010\_TCDF-CDFT23-ERA5Land-1981-2010\_195101-210012.nc  
prAdjust\_Amon\_IPSL-CM6A-LR\_ssp126\_r1i1p1f1\_gr010\_TCDF-CDFT23-ERA5Land-1981-2010\_195101-210012.nc  
prAdjust\_Amon\_MPI-ESM1-2-HR\_ssp126\_r1i1p1f1\_gr010\_TCDF-CDFT23-ERA5Land-1981-2010\_195101-210012.nc  
prAdjust\_Amon\_MRI-ESM2-0\_ssp126\_r1i1p1f1\_gr010\_TCDF-CDFT23-ERA5Land-1981-2010\_195101-210012.nc  
prAdjust\_Amon\_UKESM1-0-LL\_ssp126\_r1i1p1f2\_gr010\_TCDF-CDFT23-ERA5Land-1981-2010\_195101-210012.nc