

Energetic Formulation of Large-Deformation Poroelasticity

Mina Karimi^{1*}, Mehrdad Massoudi², Noel Walkington³, Matteo Pozzi¹, and Kaushik Dayal^{1, 2, 3, 4*}

¹Department of Civil and Environmental Engineering, Carnegie Mellon University

²National Energy Technology Laboratory, Pittsburgh PA 15236-0940

³Center for Nonlinear Analysis, Department of Mathematical Sciences, Carnegie Mellon University

⁴Department of Materials Science and Engineering, Carnegie Mellon University

This is a preprint submitted to EarthArXiv. This manuscript has been peer-reviewed and formally accepted to publish in “International Journal for Numerical and Analytical Methods in Geomechanics”, with the DOI link: <https://doi.org/10.1002/nag.3326>.

Please address correspondence to:

Email: minakari@andrew.cmu.edu (Mina Karimi)

Email: Kaushik.Dayal@cmu.edu (Kaushik Dayal)

Energetic Formulation of Large-Deformation Poroelasticity

Mina Karimi,^{1,*} Mehrdad Massoudi,² Noel Walkington,³ Matteo Pozzi,¹ and Kaushik Dayal^{1,3,4,†}

¹*Department of Civil and Environmental Engineering, Carnegie Mellon University*

²*National Energy Technology Laboratory, Pittsburgh PA 15236-0940*

³*Center for Nonlinear Analysis, Department of Mathematical Sciences, Carnegie Mellon University*

⁴*Department of Materials Science and Engineering, Carnegie Mellon University*

(Dated: December 30, 2021)

The modeling of coupled fluid transport and deformation in a porous medium is essential to predict the various geomechanical process such as CO₂ sequestration, hydraulic fracturing, and so on. Current applications of interest, for instance, that include fracturing or damage of the solid phase, require a nonlinear description of the large deformations that can occur. This paper presents a variational energy-based continuum mechanics framework to model large-deformation poroelasticity. The approach begins from the total free energy density that is additively composed of the free energy of the components. A variational procedure then provides the balance of momentum, fluid transport balance, and pressure relations. A numerical approach based on finite elements is applied to analyze the behavior of saturated and unsaturated porous media using a nonlinear constitutive model for the solid skeleton. Examples studied include the Terzaghi and Mandel problems; a gas-liquid phase-changing fluid; multiple immiscible gases; and unsaturated systems where we model injection of fluid into soil. The proposed variational approach can potentially have advantages for numerical methods as well as for combining with data-driven models in a Bayesian framework.

1. Introduction

The modeling of fluid transport in porous deformable media, and analyzing the coupled deformation-transport behavior, is of importance for a variety of engineering and scientific applications, ranging from the modeling of natural and engineered biological materials to geomechanics, e.g. [Eh109, SLL⁺20, JA20, Sel13, Sim92, DJB20, AZ15, SOS13, TA20, LHA18, FEN19, DSF10, vSAAGC20, MN12, SKH⁺19, TW18, FJK⁺21, JJ14, Sim92, HG79, BOKCW20] and numerous other works. It has therefore been the focus of numerous formulations, starting from the seminal work of Biot [Bio35, Bio41]. In this paper, we formulate a general finite-deformation model for poroelasticity based on a variational approach.

The classical linear theory proposed by Biot has been applied to study a wide range problems, e.g. [Cou04, Wan00, Rud01, Cow99]. However, the many assumptions of the linear theory, including linear elastic response for the solid phase, infinitesimal strain, and constant permeability are too restrictive to model the complex nonlinear response of many porous systems, such as polymers, damaged geomaterials with fracture, and soft tissues.

Therefore, there have been many efforts to generalize the theory to the nonlinear setting, with early works starting from Biot [Bio73]. More recently, examples of nonlinear large-deformation poroelastic models include models for elastomeric and biological materials [MDW16]; multiphase continuum formulations presented in [FG12] and [HZZS08] for saturated fields reinforced by elastic fibers and polymeric gels, respectively; and for computational geomechanics, such as multiphase finite element formulations for fully and partially saturated porous geomaterials, by Borja and coworkers [LBR04, Bor04, SB14]. Another older approach is based on mixture theory, e.g. [Bow82], which leads to a formidable set of equations.

The key contribution of this paper is a variational derivation that starts from a free energy, and uses variational principles to obtain the governing equations, in contrast to other works in the literature. For instance, a closely-related body of work is by Borja and coworkers [Bor06, Bor04], in which they use a thermodynamic approach based on an energy and also the balance laws of continuum mechanics; they

* minakari@andrew.cmu.edu

† Kaushik.Dayal@cmu.edu

formulate a three-phase continuum mixture theory to analyze a partially saturated porous media. They use a free energy function of the medium is defined based on the solid strain, displacement vector, and pressure of each phase. In a related approach, [KPC07] formulated an energy-based method for unsaturated porous medium where they used the energy equation which is developed by [BC96].

Our approach is instead to directly use the energy and associated variational principles to derive the governing equations. Similar approaches have been used in geomechanics to model solid materials with a fluid phase, i.e. two-phase porous medium models, e.g. [BA95, SWB16, Ana15]. Variational approaches for poromechanics are relatively recent, and appear to begin with [Gaj10, CA10]. While we follow the overall structure of these works in our formulation, these have been restricted to simpler settings, e.g. saturated systems, two-phase systems, and so on. In this work, as in those works, the governing equations are derived from energy minimization. However, [CA10] assume a multiplicative decomposition of the deformation gradient into an elastic part and a poromechanical part – corresponding to the deformation caused by fluid transport – whereas we do not use this assumption.

This work presents a variational energy-based model for poromechanics, which can be applied to both saturated and unsaturated porous mediums, containing compressible constituents. The proposed model is amenable to the use of arbitrary energy density functions for both the fluid and solid phases. In particular, it can model unsaturated porous media with compressible constituents, and multiple immiscible fluid phases with compressible and incompressible constituents. Our strategy is to begin with the free energy density function, and use a variational approach to obtain the conservation of mass and momentum, and the pressure equality equations. An important advantage of the energetic formulation and the minimization structure is the advantage for robust numerical schemes using finite elements and other methods [SF73]. In addition, it can enable efficient numerical approaches to combining physics-based models with data-driven strategies [KM DP22].

Organization. Section 2 provides the general formulation, starting with the kinematics and then using a variational approach to develop the general governing equations. Sections 3 discusses the constitutive models for saturated and unsaturated systems, which includes a discussion on porous media with single and multiple fluids. Section 4 examines the relation between the referential and current volume fractions for different assumptions on the fluid and solid responses. Section 5 provides numerical solutions of benchmark problems proposed by Terzaghi and Mandel. Sections 6, 7, and 8 provides numerical examples to investigate the settings of a phase-changing (gas to liquid) fluid, multiple compressible fluids, and unsaturated systems.

2. Model Formulation

We assume that our system consists of N phases or components indexed by i , with $i = 1$ corresponding to the solid skeleton phase, and $i = 2, \dots, N$ corresponding to the fluid phases. We follow the motion of the solid skeleton with respect to the reference configuration, i.e., we use a Lagrangian description. Therefore, we use material time derivatives. Once we obtain the governing equations, they can be pushed forward to the current configuration.

The gradient and divergence operators in the reference and current configurations will be denoted $\nabla_0, \nabla, \text{div}_0, \text{div}$ respectively. In general, quantities with the subscript 0 will refer to referential quantities. We use $\frac{d}{dt}$ to denote the material time derivative following the motion of the solid skeleton.

2.A. Kinematics

We consider a porous medium Ω , containing solid and fluid components. We consider a two-scale picture motivated by homogenization. Namely, there is a macroscopic deformation $\boldsymbol{x}(\boldsymbol{x}_0, t)$, where \boldsymbol{x} is the location at time t of a material particle located at \boldsymbol{x}_0 in the reference configuration. To each macroscale location, i.e., for a given \boldsymbol{x}_0 , there corresponds a microscale representative volume element (RVE), which accounts for the geometry of the porous skeleton and other microscale features (Figure 1). Therefore, at the macroscopic homogenized, an RVE is equivalent to a material point.

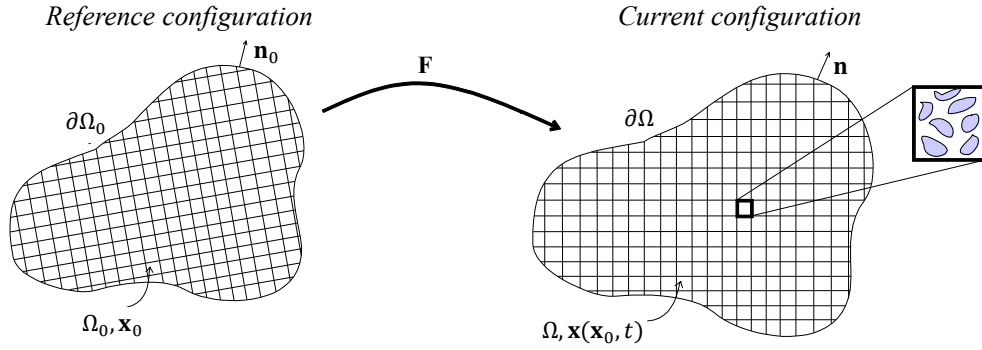


Figure 1. Representative volume element of the porous medium, and relation of reference and current configurations.

We define:

1. the macroscale deformation gradient tensor $\mathbf{F} := \frac{\partial \mathbf{x}}{\partial \mathbf{x}_0}$, the Jacobian $J := \det \mathbf{F}$, and the displacement $\mathbf{u}(\mathbf{x}_0, t) := \mathbf{x}(\mathbf{x}_0, t) - \mathbf{x}_0$;
2. the densities P_i and P_{0i} as the mass of component i per unit (current and referential respectively) volume of the mixture;
3. the true densities ρ_i and ρ_{0i} as the mass of component i per unit (current and referential respectively) volume occupied by component i ;
4. the volume fractions ϕ_i and ϕ_{0i} of phase i in the current and reference respectively.

We highlight that we will use a Lagrangian description for all of these quantities. That is, while P_i, ρ_i, ϕ_i all describe quantities in the current configuration, they will be written as functions of \mathbf{x}_0 .

It follows from these definitions that:

$$P_{0i} = \phi_{0i} \rho_{0i} \quad (2.1a)$$

$$P_i = \phi_i \rho_i \quad (2.1b)$$

A central assumption is that the entire RVE is mapped by \mathbf{F} as an affine transformation. Further, the mass of each phase contained in an RVE is the same in the reference and current configurations¹. Together, these imply the following relations between quantities in the reference and current configurations:

$$\text{Differential volume: } d\Omega_0 \mapsto d\Omega = J d\Omega_0 \quad (2.2a)$$

$$\text{Density: } P_{0i} \mapsto P_i = J^{-1} P_{0i} \quad (2.2b)$$

$$\text{True density: } \rho_{0i} \mapsto \rho_i = \frac{\phi_{0i}}{\phi_i} J^{-1} \rho_{0i} \quad (2.2c)$$

The relation between the referential and current versions of other quantities such as the volume fraction will depend on assumptions such as incompressibility, and will be discussed in later sections.

We notice that ϕ_{0i} is a fixed referential quantity that depends only on the geometry of the reference RVE, while ϕ_i depends on the deformation. Therefore, the latter is a suitable quantity to appear as an argument of the total free energy below. Further, P_{0i} is *not* a fixed referential quantity, because the mass of the fluid phases in the RVE can change due to transport. Therefore, P_{0i} is a suitable quantity to appear as an argument of the total free energy.

¹ We note, however, that the mass of the fluid phases in both the reference and current configuration can change in time due to mass transport.

2.B. Energetics

The total free energy of the porous medium consisting of a solid skeleton and $N - 1$ fluid phases is given by:

$$E[\mathbf{x}, \{P_{0i}\}, \{\phi_i\}] = \int_{\Omega_0} (W_0(\nabla_0 \mathbf{x}, \{P_{0i}\}, \{\phi_i\}) - \psi_0(\mathbf{x}, \{P_{0i}\})) \, d\Omega_0 - \int_{\partial A} \mathbf{t}_0^* \cdot \mathbf{x} \, dS - \sum_{i=2}^N \int_{\partial B_i} \eta_{0i}^* P_{0i} \, dS \quad (2.3)$$

where W_0 is the (Helmholtz) energy per unit referential volume, and ψ_0 is the force potential per unit referential volume. The boundary conditions correspond to specified mechanical traction \mathbf{t}^* on the solid skeleton over some part of the boundary ∂A , and specified referential chemical potential η_{0i}^* over some part of the boundary ∂B_i for each fluid phase.

We will assume that the energy density W_0 is additively composed of the energy densities of the components:

$$W_0 = \phi_{0s} W_{0s}(\mathbf{F}) + \sum_{i=2}^N \phi_{0i} W_{0i}(J, P_{0i}, \phi_i) \quad (2.4)$$

where W_{0i} is the energy density of phase i per unit referential volume.

For the solid phase, it is standard to assume that W_{01} is only a function of \mathbf{F} , and that P_{01} and ϕ_1 will not appear.

For the fluid phases, we are typically given a free energy density (per unit current volume) that is a function only of the true density of the corresponding phase. Denoting this given free energy density as $W_i(\rho_i)$, we write the energy density W_{0i} in terms of the arguments of E :

$$W_{0i} = \frac{J\phi_i}{\phi_{0i}} W_i(J^{-1}P_{0i}/\phi_i) \quad (2.5)$$

where we have used that $\rho_i = J^{-1}P_{0i}/\phi_i$ from (2.1) and (2.2).

2.C. Balance of Mass

Following [Gaj10, Cou04], we define the (referential) chemical potential η_0 as the variation of E with respect to the referential density for the fluid phases in the bulk:

$$\eta_{0i} = -\delta_{P_{0i}} E = -\frac{\partial W_0}{\partial P_{0i}} + \frac{\partial \psi_0}{\partial P_{0i}} \quad (2.6)$$

where we use the notation $\delta_{P_{0i}} E$ to denote the variational (functional) derivative of E with respect to P_{0i} . The boundary condition that appears from the variational principle corresponds to $\eta_{0i} = \eta_{0i}^*$ specified on ∂B_i ; this is related, but not directly equivalent, to specifying the pressure in the general setting.

The velocity in the reference configuration – relative to the solid skeleton – of the i -th fluid phase is assumed to be proportional to the gradient of the chemical potential:

$$\mathbf{v}_{0i} = \mathbf{K}_i \nabla_0 \eta_{0i} = \mathbf{K}_i \left(-\nabla_0 \frac{\partial W_0}{\partial P_{0i}} + \nabla_0 \frac{\partial \psi_0}{\partial P_{0i}} \right) \quad (2.7)$$

where \mathbf{K}_i is the positive-definite second-order permeability tensor of the porous medium in the reference configuration. Following [BA95], we can push forward (2.7) as follows:

$$\mathbf{v}_i = J^{-1} \mathbf{F} \mathbf{v}_{0i} = \mathbf{k}_i \left(-\nabla \frac{\partial W_0}{\partial P_{0i}} + \nabla \frac{\partial \psi_0}{\partial P_{0i}} \right) \quad (2.8)$$

where \mathbf{k}_i is the permeability tensor of the porous medium in the current configuration, $\mathbf{K}_i = J\mathbf{F}^{-1}\mathbf{k}_i\mathbf{F}^{-T}$ [LBR04], using $\nabla_0 = \mathbf{F}^T\nabla$. In an isotropic medium, the permeability tensor can be written:

$$\mathbf{k}_i = \frac{\tilde{k}_i}{g}\mathbf{I} \quad (2.9)$$

where g is the gravitational acceleration, and \tilde{k}_i is the hydraulic conductivity, which is defined as $\tilde{k}_i = \frac{\kappa}{\gamma_i}\rho_i g$. κ is the true permeability of the solid; γ_i is the dynamic viscosity of the fluid; ρ_i is the fluid density; and \mathbf{I} is the second-order identity tensor.

Therefore, the fluid flux vector for the i -th phase is:

$$\mathbf{q}_i = P_i\mathbf{v}_i = -\mathbf{k}_i \left(P_i\nabla \frac{\partial W_0}{\partial P_{0i}} - P_i\nabla \frac{\partial \psi_0}{\partial P_{0i}} \right) \quad (2.10)$$

The conservation of mass for each fluid phase in the current configuration can be written as follows:

$$-\int_{\partial\Omega} \mathbf{q}_i \cdot \mathbf{n} \, dS = \frac{d}{dt} \left(\int_{\Omega} P_i \, dV \right) \Rightarrow -J \operatorname{div} \mathbf{q}_i = \frac{d}{dt} P_i J \quad (2.11)$$

where the differential form follows from the integral form by arbitrariness of Ω .

Specializing to a uniform gravitational field, the referential potential can be written as $\psi_0 = \mathbf{b}_0 \cdot \mathbf{x}$, where \mathbf{b}_0 is the body force per unit referential volume. This can be written in terms of the densities and volume fractions of the individual phases:

$$\mathbf{b}_0 := P_0\mathbf{g} = \left(\sum_{i=1}^N P_{0i} \right) \mathbf{g} \quad (2.12)$$

where P_0 is the total mass per unit referential volume, and \mathbf{g} is the force per unit mass due to gravity. Then, we can simplify the potential term in (2.10) to:

$$\frac{\partial \psi_0}{\partial P_{0i}} = \mathbf{g} \cdot \mathbf{x} \Rightarrow \nabla \frac{\partial \psi_0}{\partial P_{0i}} = \mathbf{g} \quad (2.13)$$

Consequently, the fluid flux vector in (2.10) can be rewritten as follows:

$$\mathbf{q}_i = -\mathbf{k}_i \left(P_i\nabla \frac{\partial W_0}{\partial P_{0i}} - P_i\mathbf{g} \right) \quad (2.14)$$

2.D. Balance of Momentum

Setting to zero the variation of E with respect to \mathbf{x} yields the force equilibrium equation in the referential and current forms:

$$\operatorname{div}_0 \mathbf{T} + \frac{\partial \psi_0}{\partial \mathbf{x}} = 0 \Leftrightarrow \operatorname{div} \boldsymbol{\sigma} + J^{-1} \frac{\partial \psi_0}{\partial \mathbf{x}} = \mathbf{0} \quad (2.15)$$

where $\mathbf{T} := \frac{\partial W_0}{\partial \mathbf{F}}$ is the first Piola stress tensor; $\boldsymbol{\sigma} = \frac{1}{J}\mathbf{T}\mathbf{F}^T$ is the Cauchy stress tensor; the body force is defined through the derivative of $\frac{\partial \psi_0}{\partial \mathbf{x}}$; and the corresponding boundary conditions from the variation are $\mathbf{T}\hat{\mathbf{n}}_0 = \mathbf{t}_0^*$.

If we specialize to a uniform gravitational field, the body force in the reference \mathbf{b}_0 is given by the

expression in (2.12). In the current configuration, we have

$$\mathbf{b} := P\mathbf{g} = \left(\sum_{i=1}^N P_i \right) \mathbf{g} \quad (2.16)$$

where P is the total mass per unit current volume. We note that \mathbf{b}_0 and \mathbf{b} are related by the expression $\mathbf{b} = J^{-1}\mathbf{b}_0$.

2.E. Balance of Fluid Pressure

We first notice that the variables ϕ_i are not independent when we take variations; they must satisfy the constraint $\sum_{i=1}^N \phi_i = 1$. We can alternatively write this as:

$$\sum_{i=1}^N \phi_i = 1 \Rightarrow \phi_2 = 1 - \phi_1 - \phi_3 - \dots - \phi_i - \dots - \phi_N \quad (2.17)$$

We will eliminate ϕ_2 in terms of the other ϕ_i . Further, we notice that ϕ_s will be prescribed; similarly, some of the ϕ_i could be prescribed, e.g., due to incompressibility.

Setting to zero the variation of E with respect to ϕ_i , and using the form from (2.4), gives:

$$\frac{\partial W_0}{\partial \phi_i} = \phi_{02} \frac{\partial W_{02}}{\partial \phi_2} \frac{\partial \phi_2}{\partial \phi_i} + \phi_{0i} \frac{\partial W_{0i}}{\partial \phi_i} = 0 \Rightarrow -\phi_{02} \frac{\partial W_{02}}{\partial \phi_2} + \phi_{0i} \frac{\partial W_{0i}}{\partial \phi_i} = 0 \quad (2.18)$$

Since this is true for every i , it follows that:

$$\phi_{02} \frac{\partial W_{02}}{\partial \phi_2} = \phi_{03} \frac{\partial W_{03}}{\partial \phi_3} = \dots = \phi_{0N} \frac{\partial W_{0N}}{\partial \phi_N} \quad (2.19)$$

We next recall that the derivative of the Helmholtz free energy with respect to volume, keeping temperature and mass fixed, is the pressure p . Rewriting this in terms of the density ρ – which is inversely proportional to the volume when the mass is fixed – and in terms of the Helmholtz free energy density per unit volume, we have the following relation between the fluid pressure p and the Helmholtz free energy density:

$$p = W(\rho) - \rho \frac{dW}{d\rho} \quad (2.20)$$

This relation holds for each fluid phase individually.

Applying the equilibrium relations above to the form assumed in (2.5), we get that:

$$\phi_{0i} \frac{\partial W_{0i}}{\partial \phi_i} = J \left(W_i (J^{-1} P_{0i} / \phi_i) - \frac{J^{-1} P_{0i}}{\phi_i} \frac{dW_i}{d\rho_i} \right) = J p_i \quad (2.21)$$

Since J depends only on \mathbf{x}_0 , it follows that the pressures in each phase p_i at a given \mathbf{x}_0 must be equal.

We highlight that the balance of pressure provides a local condition that must be satisfied pointwise and does not require the solution of PDE, in contrast to the balances of mass and momentum.

2.F. Compatibility with the Second Law of Thermodynamics

To ensure that the proposed model is consistent with the second law of thermodynamics, we first notice that in an isothermal setting it reduces to the requirement that the dissipation is non-negative for any process [GFA10].

Following [PF90, AK06, MD14, dMPBD18, AD17, AD15a, AD15b], we begin by taking the time derivative of the free energy from (2.3) to get:

$$\frac{dE}{dt} = \int_{\Omega_0} \sum_i \left(\frac{\partial W_0}{\partial P_{0i}} - \frac{\partial \psi_0}{\partial P_{0i}} \right) \frac{dP_{0i}}{dt} d\Omega_0 \quad (2.22)$$

where we have used that $\frac{d\phi_i}{dt} = 0$ and $\frac{d\mathbf{x}}{dt} = \mathbf{0}$ per our quasistatic model. We have assumed that the boundary terms vanish for simplicity, but they can easily be accounted for following, e.g., [PF90, AD15a].

From Section 2.C, we can push back the balance of mass to the reference configuration to obtain:

$$-J \operatorname{div} \mathbf{q}_i = \frac{d}{dt} P_i J \Rightarrow -\operatorname{div}_0 \mathbf{q}_{0i} = \frac{d}{dt} P_{0i} \quad (2.23)$$

and the corresponding flux for each fluid phase is given by:

$$\mathbf{q}_{0i} = -P_i \mathbf{K}_i \nabla_0 \left(\frac{\partial W_0}{\partial P_{0i}} - \frac{\partial \psi_0}{\partial P_{0i}} \right) \quad (2.24)$$

Using these expressions, and imposing the condition that \mathbf{K} is a positive-definite tensor, we can rewrite $\frac{dE}{dt}$ as follows and use integration-by-parts:

$$\begin{aligned} \frac{dE}{dt} &= \int_{\Omega_0} \sum_i \left(\frac{\partial W_0}{\partial P_{0i}} - \frac{\partial \psi_0}{\partial P_{0i}} \right) \operatorname{div}_0 \left[P_i \mathbf{K}_i \nabla_0 \left(\frac{\partial W_0}{\partial P_{0i}} - \frac{\partial \psi_0}{\partial P_{0i}} \right) \right] d\Omega_0 \\ &= - \int_{\Omega_0} \sum_i P_i \nabla_0 \left(\frac{\partial W_0}{\partial P_{0i}} - \frac{\partial \psi_0}{\partial P_{0i}} \right) \cdot \mathbf{K}_i \nabla_0 \left(\frac{\partial W_0}{\partial P_{0i}} - \frac{\partial \psi_0}{\partial P_{0i}} \right) d\Omega_0 \\ &\leq 0 \end{aligned} \quad (2.25)$$

which shows that E is non-increasing in the proposed model, as required by the second law of thermodynamics.

3. Models for Saturated and Unsaturated Systems

Single Compressible Fluid in a Saturated Medium. The energy density is:

$$W_0(\mathbf{F}, P_{0f}, \phi_f) = (1 - \phi_{0f}) W_{0s}(\mathbf{F}) + \phi_{0f} W_{0f}(J, P_{0f}, \phi_f) \quad (3.1)$$

where we have used $N = 2$ (solid s and fluid f). □

Multiple Immiscible Compressible Fluids. The energy density is:

$$W_0(\mathbf{F}, \{P_{0i}\}_{i=2}^N, \{\phi_i\}_{i=2}^N) = \phi_{0s} W_{0s}(\mathbf{F}) + \sum_{i=2}^N \phi_{0i} W_{0i}(J, P_{0i}, \phi_i) \quad (3.2)$$

where the subscript s denotes quantities corresponding to the solid. □

Unsaturated Systems. Consider an unsaturated medium with a solid phase, a incompressible fluid phase (e.g. water), and an compressible fluid phase (e.g. air). The state variables for the energy are $\mathbf{F}, P_{0I}, P_{0c}, \phi_I, \phi_c$, where the subscripts c and I denote quantities corresponding to the compressible fluid and incompressible fluid respectively.

For the incompressible fluid phase, we require that the true density in the current configuration has a fixed value $\tilde{\rho}_I$:

$$\frac{P_{0I}}{J\phi_I} = \tilde{\rho}_I \quad (3.3)$$

We notice that the energy is constant for an incompressible fluid: all states that satisfy incompressibility have the same energy, and all other states are inadmissible (i.e., have infinite energy). Since this energy is a constant, it will not appear once we take variations and consequently we can set it to 0 for simplicity.

Therefore, we can write the total energy density as:

$$W_0(\mathbf{F}, P_{0I}, P_{0c}, \phi_I, \phi_c) = \phi_{0s}W_{0s}(\mathbf{F}) + \phi_{0c}W_{0c}(J, \phi_c, P_{0c}) \quad (3.4)$$

We highlight some issues. First, if we further assume that the solid skeleton is incompressible and affinely deformed by \mathbf{F} , this imposes the additional constraint $J = 1$. Second, we notice that the incompressibility constraint is generally not satisfied in the reference configuration, i.e. $\rho_{0I} \neq \tilde{\rho}_I$ in general. Third, it is sometimes reasonable to neglect the energy of the compressible fluid (e.g., air at low pressure in rock); in that case, we need only consider the energy of the solid. However, we emphasize that the problem still contains the influence of the fluid through the mass transport equations (2.11). \square

4. Models for Referential and Current Volume Fractions

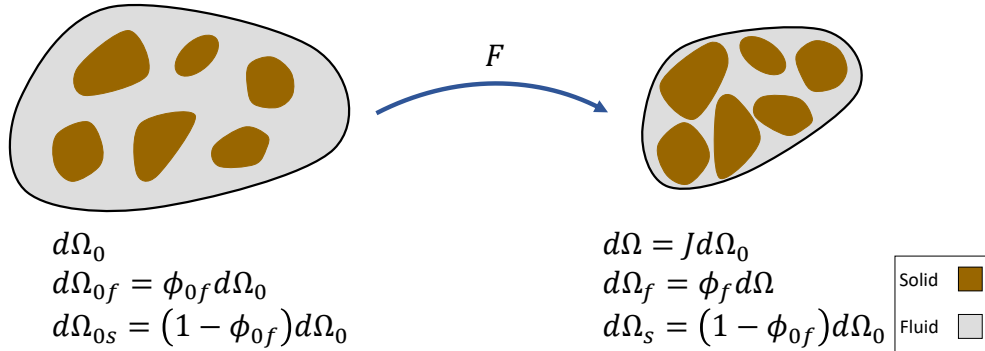


Figure 2. Volume change for an incompressible solid phase with a compressible fluid.

Incompressible Solid with Compressible Pore Space. Consider a porous medium with an incompressible solid skeleton and compressible fluid in the pore space (Figure 2). From incompressibility of the solid skeleton – meaning that the true current density ρ_s has a given fixed value – and the fact that the mass of the solid skeleton is conserved because there is no mass transport of the solid, we have that the volume occupied by the solid phase in the reference and current is constant. Therefore, the current and referential volume fractions of the solid phase are related by $\phi_s = J^{-1}\phi_{0s}$. Using that the fluid volume fractions in the reference and current are given by $\phi_{0f} = 1 - \phi_{0s}$ and $\phi_f = 1 - \phi_s$, we have that $\phi_f = 1 - J^{-1}(1 - \phi_{0f})$. \square

Affinely Deformed Solid with Compressible Fluid. Consider a porous medium with a compressible solid phase and a compressible fluid phase (Figure 3). Let ϕ_{0f} and ϕ_{0s} be the referential volume fractions of fluid and solid phases, respectively. The deformation of the solid phase is assumed to be affine with the macroscopic deformation gradient \mathbf{F} . This implies that $\phi_{0s} = \phi_s$ as follows. We have the following relation between current and reference volume elements for the entire RVE as well as for the solid skeleton:

$$\begin{aligned} d\Omega &= J d\Omega_0 \\ d\Omega_s &= J d\Omega_{0s} \end{aligned} \quad (4.1)$$

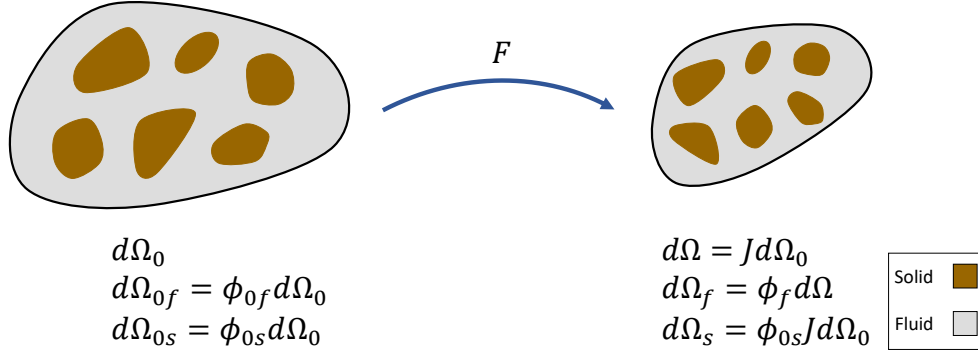


Figure 3. Volume change for a compressible solid phase with a compressible fluid.

Further, from the definition of the volume fraction of the solid skeleton, we have:

$$\begin{aligned} d\Omega_s &= \phi_s d\Omega = \phi_s J d\Omega_0 \\ d\Omega_{0s} &= \phi_{0s} d\Omega_0 \end{aligned} \quad (4.2)$$

therefore, by substituting last equation in second equation, we can derive:

$$d\Omega_0 = J\phi_{0s} d\Omega_0 \quad (4.3)$$

We can therefore conclude that $\phi_{0s} = \phi_s$.

Further, since $\phi_f = 1 - \phi_s$ and $\phi_{0f} = 1 - \phi_{0s}$, it follows that $\phi_{0f} = \phi_f$. □

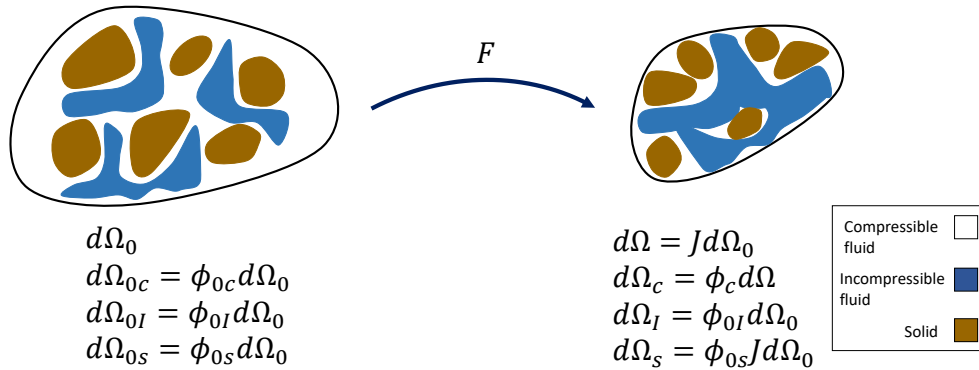


Figure 4. Volume change for a compressible solid phase with incompressible and compressible fluid phases.

Compressible Solid with Compressible and Incompressible Fluids. Consider a porous medium with compressible solid skeleton and air and incompressible water (Figure 4). Let ϕ_{0s} , ϕ_{0I} , and ϕ_{0c} be the reference volume fractions of compressible solid, incompressible fluid, and compressible fluid phases, respectively. Assuming that the solid phase deforms affinely, we have that $\phi_s = \phi_{0s}$. For the incompressible fluid phase, we require that the true density in the current configuration have a fixed value $\tilde{\rho}_I$, giving $\phi_I = \frac{P_{0I}}{J\tilde{\rho}_I}$. Using that the volume fractions must sum to 1, we have $\phi_c = 1 - \phi_{0s} - \frac{P_{0I}}{J\tilde{\rho}_I}$. □

5. Model Verification with Terzaghi's and Mandel's Problems

In this section, we verify the model by investigating its response in the model consolidation problems proposed by Terzaghi and Mandel. The general form of the strain energy density for a saturated porous medium with an incompressible solid phase and compressible fluid phase is:

$$W_0 = (1 - \phi_{0f})W_{0s}(\mathbf{F}) + \phi_{0f}W_{0f}(J, P_{0f}, \phi_f) \quad (5.1)$$

Following section 2.D, the first Piola stress tensor can be derived as:

$$\mathbf{T} = (1 - \phi_{0f})\frac{\partial W_{0s}}{\partial \mathbf{F}} + \phi_{0f}\frac{\partial W_{0f}}{\partial J}\mathbf{J}\mathbf{F}^{-T} \quad (5.2)$$

Using (2.5) and (2.21), we can write:

$$\frac{\partial W_{0f}}{\partial J} = -p\frac{\phi_f}{\phi_{0f}} \quad (5.3)$$

Thus, the Cauchy stress tensor can be written as follows:

$$\boldsymbol{\sigma} = (1 - \phi_{0f})J^{-1}\mathbf{F}^T\frac{\partial W_{0s}}{\partial \mathbf{F}} - \phi_f p\mathbf{I} \quad (5.4)$$

Equation (5.4) shows that the total Cauchy stress is obtained by a summation of the solid and fluid partial stresses $\boldsymbol{\sigma} = \boldsymbol{\sigma}_s + \boldsymbol{\sigma}_f$, where $\boldsymbol{\sigma}_f = -\phi_f p\mathbf{I}$ is an isotropic stress tensor. In addition, the general expression of the Cauchy effective stress tensor is $\boldsymbol{\sigma}' = \boldsymbol{\sigma} + p\mathbf{I}$, which can be written as:

$$\boldsymbol{\sigma}' = (1 - \phi_f)\left(\mathbf{F}^T\frac{\partial W_{0s}}{\partial \mathbf{F}} + p\mathbf{I}\right) \quad (5.5)$$

Assuming that the deformation of the solid phase is small and that the response is isotropic, we linearize it to get:

$$\boldsymbol{\sigma} = (1 - \phi_f)(2\mu\boldsymbol{\epsilon} + \lambda\text{tr}(\boldsymbol{\epsilon})\mathbf{I}) - \phi_f p\mathbf{I} \quad (5.6)$$

where tr denotes the trace operator. We then define the renormalized Lamé constants $\tilde{\mu} = (1 - \phi_{0f})\mu$ and $\tilde{\lambda} = (1 - \phi_{0f})\lambda$. We define $\tilde{p} = \phi_f p$ and p as the total pressure and the intrinsic fluid pressure, respectively.

Following section 2.C, the conservation of mass for the fluid phase can be written as:

$$\frac{d}{dt}P_f J = -J \text{div } \mathbf{q} \quad (5.7)$$

Following [Bor05], the bulk modulus of the fluid phase can be written:

$$K_f = \rho_f \frac{dp}{d\rho_f} \quad (5.8)$$

We recall further that:

$$P_f = \phi_f \rho_f \quad (5.9)$$

Using (5.8) and (5.9), we can rewrite the conservation of mass for the fluid and solid phases respectively as:

$$\frac{dJ}{dt} \frac{\phi_f}{J} + \frac{d\phi_f}{dt} + \frac{dp}{dt} \frac{\phi_f}{K_f} = -\frac{1}{\rho_f} \operatorname{div} \mathbf{q} \quad (5.10)$$

$$\frac{dJ}{dt} \frac{\phi_s}{J} + \frac{d\phi_s}{dt} = 0 \quad (5.11)$$

The second equation, for the solid phase, is derived in the same way as the equation (5.10) for the fluid phase, but also using that there is no transport of the solid phase and that the solid phase is incompressible (the bulk modulus $K_s \rightarrow \infty$).

Adding (5.10) and (5.11) yields the balance of mass of the porous system as follows:

$$\frac{dJ}{dt} \frac{1}{J} + \frac{dp}{dt} \frac{\phi_f}{K_f} = -\frac{1}{\rho_f} \operatorname{div} \mathbf{q} \quad (5.12)$$

Ignoring the effect of gravity and using (2.2) and (2.6), it follows that:

$$\eta_0 = \frac{\partial W_f(\rho)}{\partial \rho} \quad (5.13)$$

$$\frac{\partial p}{\partial \eta_0} = -P_f \quad (5.14)$$

Using these equations and considering small deformations, (5.12) can be written as:

$$\frac{d \operatorname{tr}(\epsilon)}{dt} + \frac{dp}{dt} \frac{\phi_f}{K_f} = \frac{\kappa}{\gamma} \nabla^2 p \quad (5.15)$$

5.A. Terzaghi's one-dimensional consolidation

In this section, we investigate the one-dimensional Terzaghi's problem. The geometry of the sample is shown in Fig. 5, and the numerical values of the model parameters are listed in Table 1. We consider a fully saturated sample with porosity $\phi_f = 0.375$ that is loaded instantaneously at $t = 0$ by a vertical load $w = 10$ kPa at the top boundary, and then remains constant in time. This sets up a mechanical stress in the sample.

The fluid flux is allowed to drain out of the top surface and is zero on the bottom surface. The pressure boundary conditions of are:

$$\text{Top BC: } \tilde{p}(z = 0) = 0; \quad \text{Bottom BC: } \left. \frac{\partial \tilde{p}}{\partial z} \right|_{z=h} = 0 \quad (5.16)$$

The closed-form solution to this problem can be written as [Cou04]:

$$\tilde{p}(\bar{z}, \bar{t}) = \sum_{n=0}^{\infty} \frac{4}{\pi(2n+1)} \sin\left(\frac{(2n+1)\pi}{2} \bar{z}\right) \exp\left(-\frac{(2n+1)^2 \pi^2}{4} \bar{t}\right) \quad (5.17)$$

$$\tilde{p} = \frac{wK_f}{K_f + \phi_f(\tilde{\lambda} + 2\tilde{\mu})} \bar{p}; \quad z = h\bar{z}; \quad t = \frac{h^2 \kappa}{\gamma} \left(\frac{K_f(\tilde{\lambda} + 2\tilde{\mu})}{K_f + \phi_f(\tilde{\lambda} + 2\tilde{\mu})} \right) \bar{t} \quad (5.18)$$

Fig. 6 shows the comparison of the closed-form and numerical results at different times. Due to the compressibility of the pore space, the fluid drains gradually from the top boundary of specimen; therefore the pore pressure value decreases and the effective stress increases as time increases. As time increases, the pore pressure tends to 0 and the solid partial stress tends to the external load.

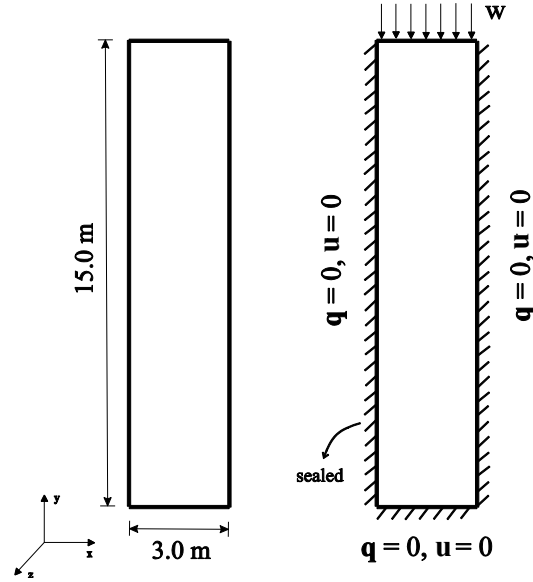


Figure 5. Geometry of Terzaghi's problem.

Property	Value
Solid phase Lamé constant, $\tilde{\lambda}$	40 MPa
Solid phase Lamé constant, $\tilde{\mu}$	40 MPa
Hydraulic conductivity, \tilde{k}	10×10^{-8} m/s
Fluid bulk modulus, K_f	2270 MPa

Table 1. Properties of solid and fluid phases.

5.B. Mandel's two-dimensional consolidation

In this section, we discuss a two-dimensional consolidation of a porous sample. The geometry of the specimen is shown in Fig. 7, and the material properties and soil porosity are assumed the same as the previous example. We consider a specimen with infinite length in the z direction which is between two horizontal plates (the top and bottom boundaries).

A constant load $w = 10$ kPa is applied in the vertical direction at $t = 0$, and remains constant thereafter. The left and right boundaries are traction-free.

For the fluid flow, we assume that there is no flux at the top and bottom boundaries, and the pressure is 0 on the left and right boundaries (located at $x = \pm a/2$).

The closed-form solution for the pressure distribution is [Cou04]:

$$\bar{p}(\bar{x}, \bar{t}) = 2 \sum_{n=1}^{\infty} \frac{\cos(\alpha_n \bar{x}) - \cos \alpha_n}{\alpha_n - \sin \alpha_n \cos \alpha_n} \sin \alpha_n \exp(-\alpha_n^2 \bar{t}) \quad (5.19)$$

$$\tilde{p} = \frac{1}{3} B(1 + \nu_u) w \bar{p}; \quad x = a\bar{x}; \quad t = \frac{a^2 \kappa}{\gamma} \left(\frac{K_f(\tilde{\lambda} + 2\tilde{\mu})}{K_f + \phi_f(\tilde{\lambda} + 2\tilde{\mu})} \right) \bar{t} \quad (5.20)$$

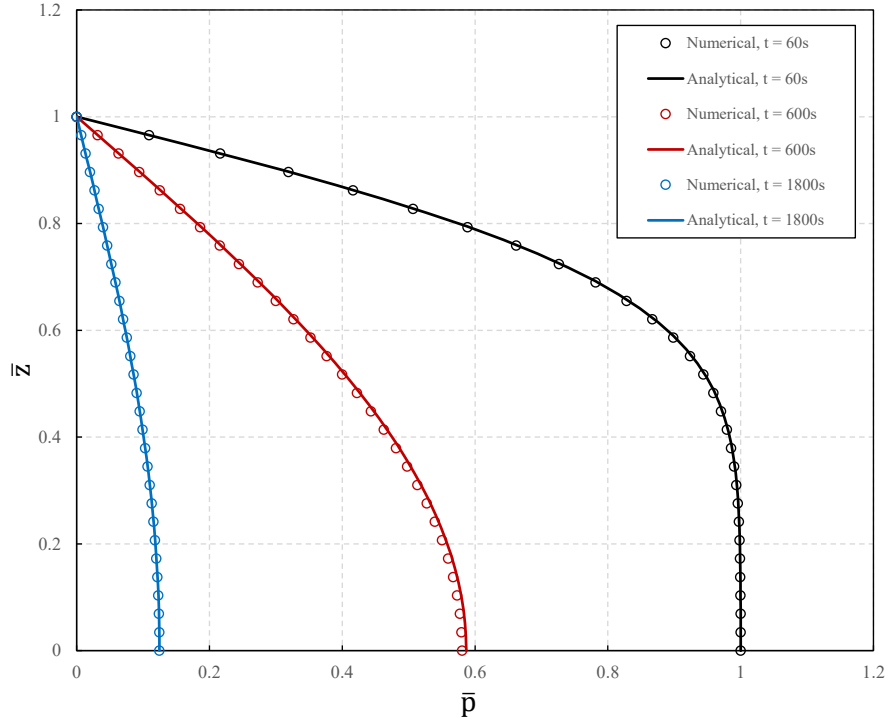


Figure 6. Variation of pressure with height for Terzaghi's problem.

where α_n is the solution of the following equation:

$$\frac{\tan \alpha_n}{\alpha_n} = \frac{1 - \nu}{\nu_u - \nu}; \quad \text{where } \nu = \frac{\tilde{\lambda}}{2(\tilde{\lambda} + \tilde{\mu})}; \quad \nu_u = \frac{3\nu + B(1 - 2\nu)}{3 - B(1 - 2\nu)}; \quad B = \frac{K_f}{\phi_f K_u}; \quad K_u = \lambda + \frac{2\tilde{\mu}}{3} + \frac{K_f}{\phi_f} \quad (5.21)$$

Once the load is applied, the fluid pressure decreases at the vicinity of left and right boundaries due to drainage out of the sides. Due to relatively slow drainage, the pressure decrease cannot be observed immediately in the whole domain, while the total load remains constant. Therefore, the pore pressure increases beyond the initial value at the center of specimen, which is the Mandel effect. The closed-form solution and our numerical results are shown in Fig. 8 for various times; we notice a signature of the Mandel effect at $t = 0.5$ s wherein we have the maximum value of pore pressure in the central region of the specimen. Similarly, Fig. 9 shows the pore pressure distribution at $t = 1.0$ s. We see clearly the increase of pore pressure beyond the initial pressure at the center, and it goes to 0 on the right and left boundaries.

The variation of non-dimensional pore pressure (\bar{p}) at different locations (from Fig. 7) vs. logarithmic time is plotted in Fig. 10. The log scale makes more prominent the pore pressure increase above its initial value shortly after applying the vertical load due to the Mandel effect. Also, the comparison of these three graphs at points A , B , and C , clearly shows that the specimen experiences the highest amount of early times pressure increase at the central points (point A), and the Mandel effect vanishes at the vicinity of left and right boundaries.

6. Van der Waals compressible fluid

In this section, we examine a porous medium containing a single fluid phase that is modeled as a Van der Waals (VdW) gas, motivated by experimental approaches such as [KPZB12]. A key feature of the VdW

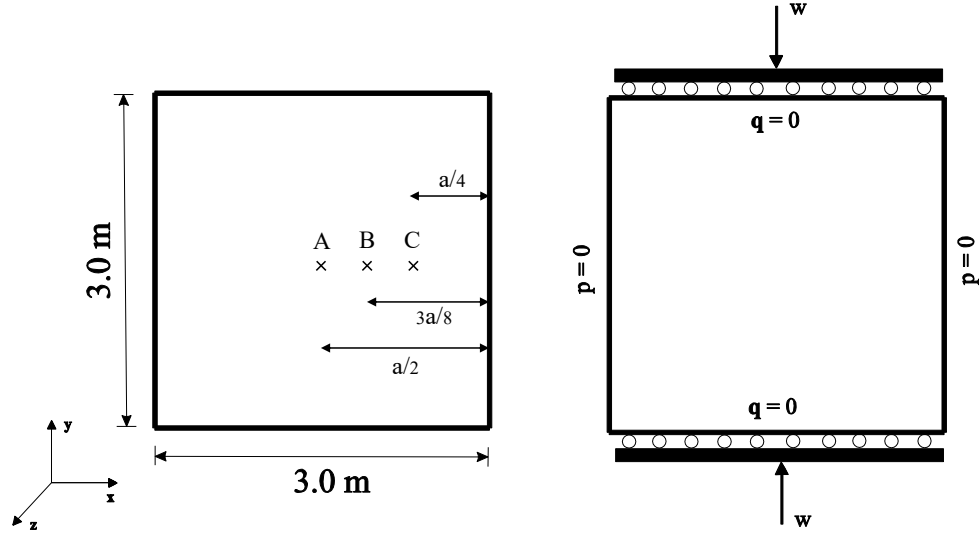


Figure 7. Geometry and the boundary conditions for Mandel's problem.

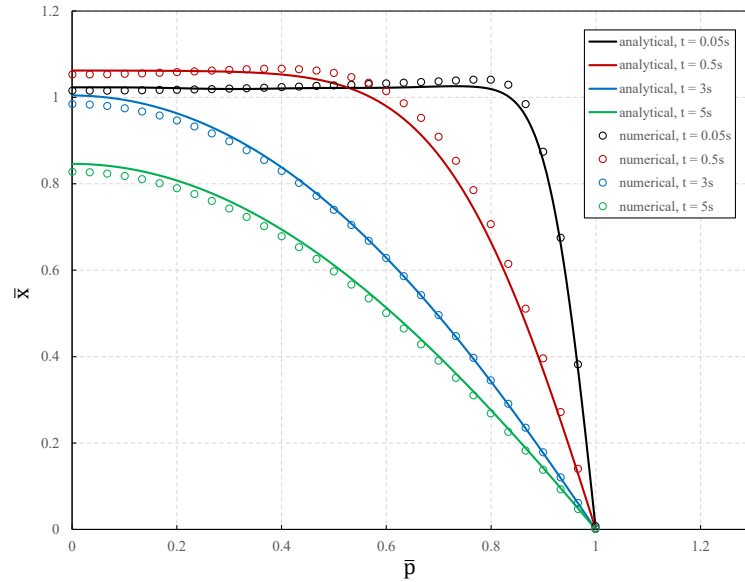


Figure 8. Variation of pore pressure in the horizontal direction at different times.

model is that it allows for a change from gas to liquid, and provides a simple model for gases such as carbon dioxide (CO₂). An important challenge in simulating gas injection in porous media is to predict the gas-liquid phase transformation of the injected gas under high pressure in the vicinity of the injection point. The VdW model for the fluid phase enables us to investigate this complex behavior.

The Helmholtz free energy density per unit current volume of a VdW gas is given by the expression:

$$W_f(\rho) = c\rho RT (1 - \log(cRT)) - \rho RT \log(\rho - b) - a\rho^2 \quad (6.1)$$

where c , a , b , R and S_0 are constants, and T is the temperature [MM09].

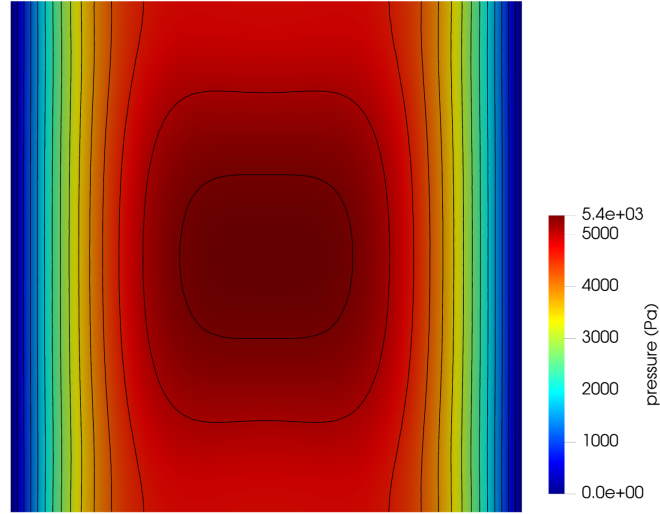


Figure 9. Pressure distribution for Mandel's problem at $t = 1$ s.

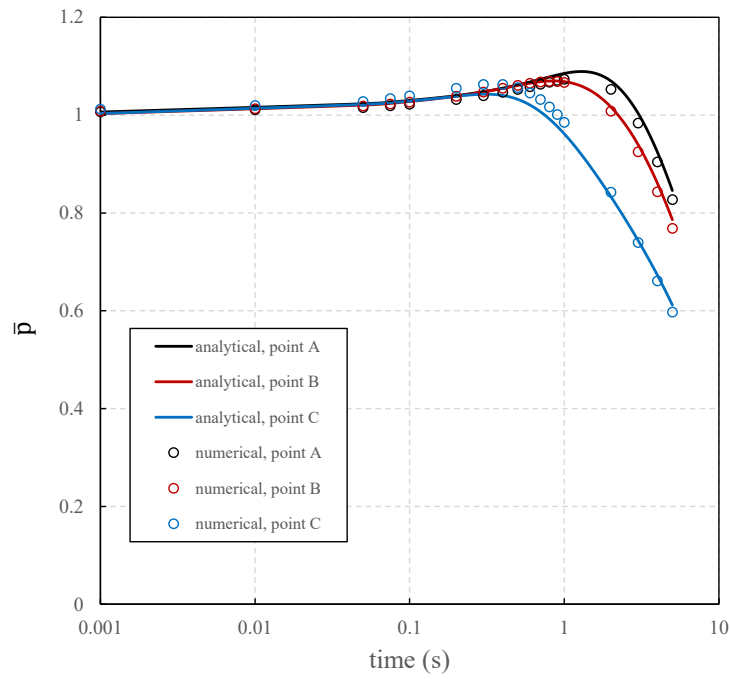


Figure 10. Pore pressure vs. time at different distances from the center of specimen.

Following (2.5), we rewrite this as:

$$W_{0f}(J, P_0, \phi) = \frac{J\phi}{\phi_0} W(J^{-1}P_0/\phi) = c \frac{P_0}{\phi} RT (1 - \log(cRT)) - \frac{P_0}{\phi} RT \log\left(\frac{\phi J}{P_0} - b\right) - a \frac{P_0^2}{\phi^2 J} \quad (6.2)$$

where we have used that $\phi = \phi_0$ from Section 4 (affinely deformed solid with compressible fluid).

We use a Neo-Hookean model for the solid phase:

$$W_{0s}(\mathbf{F}) = \frac{\mu}{2}(\text{tr}(\mathbf{F}^T \mathbf{F}) - 2) - \mu \log J + \frac{\lambda}{2}(\log J)^2 \quad (6.3)$$

Using (2.6) and (2.10), we find the chemical potential and fluid flux:

$$\eta_0 = \left(cRT (1 - \log(cRT)) - RT \log\left(\frac{1}{\rho} - b\right) + \frac{RT}{1 - b\rho} - 2a\rho \right) \quad (6.4)$$

$$\mathbf{q} = -\phi \mathbf{k} \left(\frac{RT \nabla \rho}{1 - b\rho} + \frac{bRT \rho \nabla \rho}{(1 - b\rho)^2} - 2a\rho \nabla \rho \right) \quad (6.5)$$

where $\rho = \frac{P}{\phi}$ is the true current density of the fluid.

The first Piola stress can be obtained from the energy density:

$$\mathbf{T} = (1 - \phi) (\mu \mathbf{F} - \mu \mathbf{F}^{-T} + \lambda \log J \mathbf{F}^{-T}) - P_0 \left(\frac{RT \mathbf{F}^{-T}}{1 - b\rho} - a\rho \mathbf{F}^{-T} \right) \quad (6.6)$$

The geometry and boundary conditions are shown in Fig. 11, and the material properties of soil and CO2 gas are listed in table 2. This provides a simplified model of CO2 injection through a well. The numerical calculation uses soil porosity of $\phi_{0f} = 0.2$ and a constant flux $\mathbf{q} = 4.4 \text{ kg/m}^2 \text{ s}$ ($2.225 \times 10^3 \text{ L/m}^2 \text{ s}$) is assumed at the injection point.

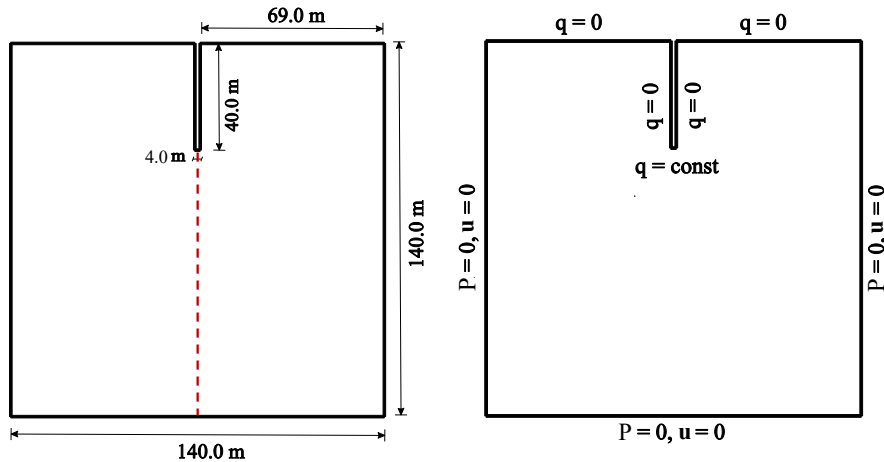


Figure 11. Geometry and boundary conditions of the specimen.

Fig. 12 illustrates the variation of pore pressure vs. inverse fluid density (ρ^{-1}), along the vertical direction below the center of injection (shown by the dashed line in Fig 11). As shown in Fig. 12, the simulation is repeated at different temperatures: below, above, and close to the critical temperature of CO2. As expected, near the center of injection, shortly after start of fluid injection, we see a gas-liquid phase transformation due to the high pressures when the temperatures are below the critical temperatures ($T < T_c$, $T = 270 \text{ K}$ and $T = 285 \text{ K}$).

Fig. 13 plots the variation of pore pressure with distance from the injection point along the vertical direction. Near the center of injection, we have the highest value of pore pressure which decreases gradually as we move away from the injection point. We can expect that if the temperature is just below T_c , the

Property	Value
Solid phase Lamé constant, λ	57.7 MPa
Solid phase Lamé constant, μ	38.46 MPa
Hydraulic conductivity, \tilde{k}	0.1 m/s
Gas constant, R	8.32 m ³ .Pa/K.mol
CO ₂ constant, a	0.364 Pa m ⁶ /mol ²
CO ₂ constant, b	42.67 × 10 ⁻⁶ m ³ /mol
Critical temperature, T_c	303.4 K

Table 2. Properties of the solid phase and VdW gas (corresponding to CO₂, from [Bie07])

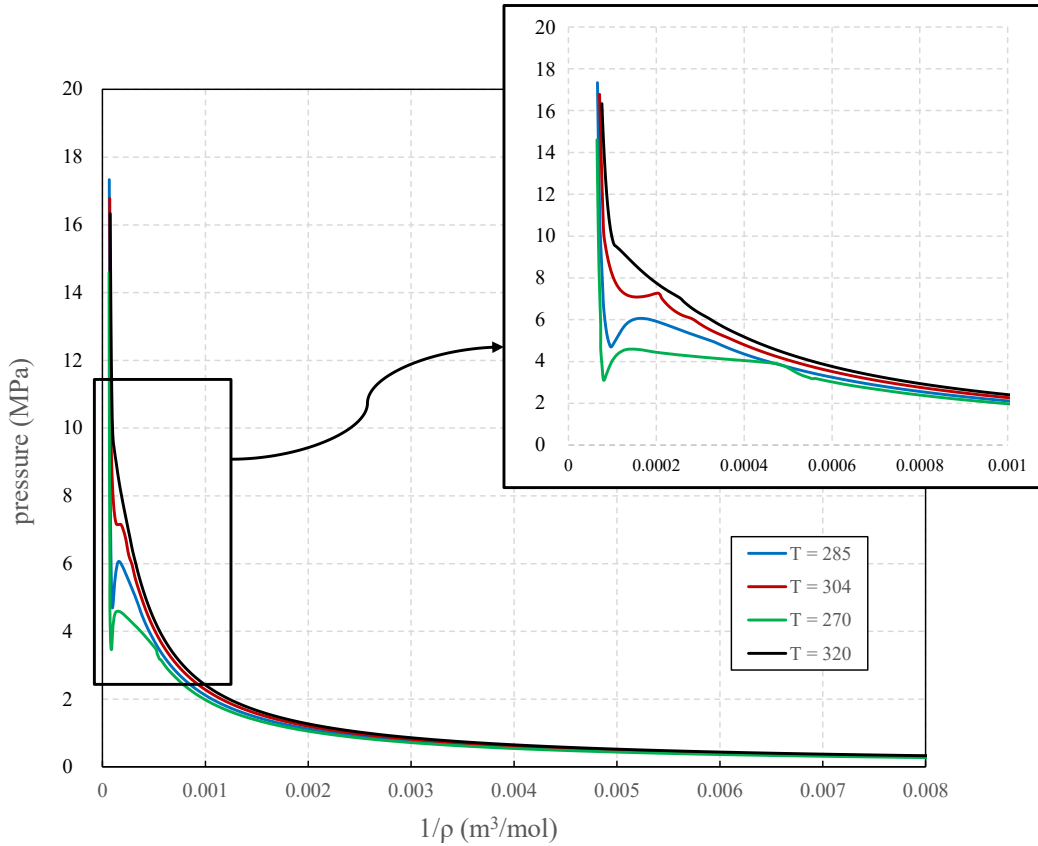


Figure 12. Pore pressure variation vs. inverse fluid density at different temperatures at $t = 20$ s.

injected fluid will undergo a phase transformation in the high pressure region close to the center of injection. Therefore, it is possible to find the range of parameters such as injection flux and injection temperature to avoid the phase transformation. We highlight that we do not consider heat transfer effects in any of these calculations.

To further examine the effect of the pore pressure distribution around the injection point, the predicted pore pressure value at different times is plotted in Fig 14. This simulation uses a flux 2.2 kg/m²s (1.112 × 10³ L/m²s) and temperature $T = 320$ K at the injection point. The plot clearly shows the increase of pore pressure with time.

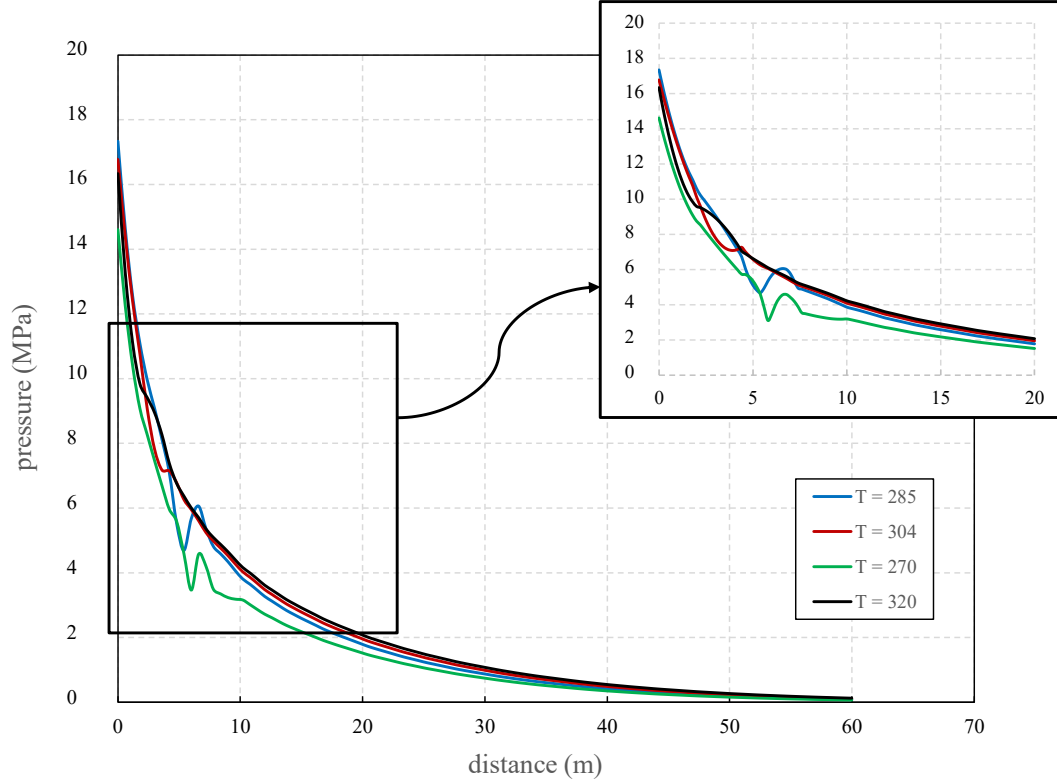


Figure 13. Pore pressure variation vs. distance from the injection point at $t = 20s$ for different temperatures.

7. Multicomponent Fluid Phase

In this section, we apply the model to a porous medium with two immiscible ideal gases, motivated by experimental approaches such as [Sar66].

The Helmholtz free energy density per unit current volume of an ideal gas is:

$$W_i(\rho_i) = -\rho_i RT \left(1 + \frac{3}{2} \log \left(\frac{3}{2} RT \right) - \log(\rho_i \xi_i) \right) \quad (7.1)$$

where R and ξ_i are constants and T is the temperature [MM09]. Following (2.5), we rewrite the energy density of the gases as:

$$W_{0i}(J, P_{0i}, \phi_i) = \frac{J\phi}{\phi_{0i}} W(J^{-1}P_{0i}/\phi_i) = -\frac{P_{0i}}{\phi_i} RT \left(1 + \frac{3}{2} \log \left(\frac{3}{2} RT \right) - \log \left(\frac{P_{0i}\xi_i}{J\phi_i} \right) \right) \quad (7.2)$$

The strain energy density of the solid phase is modeled as neo-Hookean as in (6.3).

By applying (2.6) and (2.10), we find the chemical potential and flux of the fluid phases:

$$\eta_{0i} = -RT \left(\frac{3}{2} \log \left(\frac{3}{2} RT \right) - \log(\rho_i \xi_i) \right) \quad (7.3)$$

$$\mathbf{q}_i = -\phi_i \mathbf{k}_i RT \nabla \rho_i \quad (7.4)$$

The volume fraction of the solid phase is fixed. Consequently, the unknown variables of system are \mathbf{F} , P_{i0}

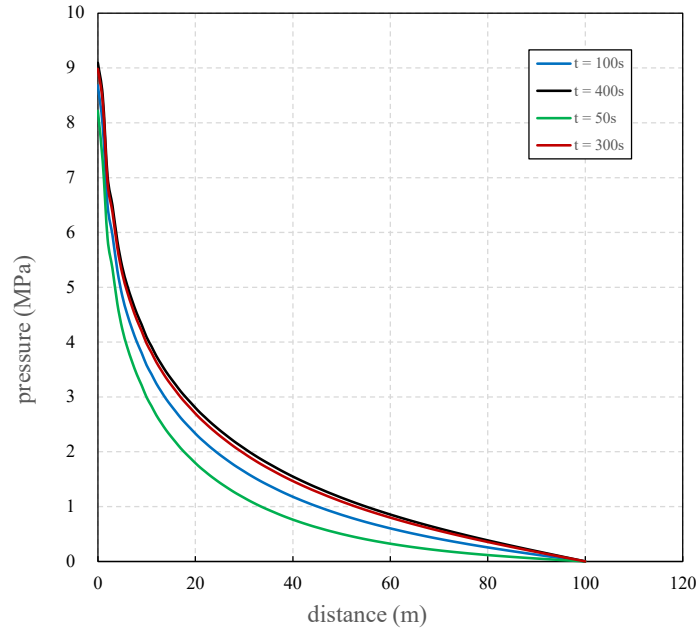


Figure 14. Pore pressure vs. distance at different times.

and ϕ_i . Therefore, the balance of mass for the fluid phases and the relation between fluid densities can be found using (2.19):

$$\frac{d}{dt} P_i J = J \operatorname{div} (\mathbf{k}_i R T \phi_i \nabla \rho_i) \quad (7.5)$$

$$\frac{P_1}{\phi_1} = \frac{P_2}{\phi_2} \quad (7.6)$$

We assume a porous medium with porosity $\phi_{0f} = 0.2$, and relation between the viscosity of two fluids is $\gamma_1 = 2\gamma_2$, and the geometry and boundary conditions are shown in Fig. 15. The properties of fluids and soil are given in Table 3.

At the beginning of the injection ($t = 0$), the domain is saturated with gas 1; we then begin injecting gas 2 with the flux $q_2 = 0.44 \text{ kg/m}^2 \text{ s}$ ($2.225 \times 10^2 \text{ L/m}^2 \text{ s}$) at the injection point. Fig. 16 shows the pore pressure distribution of both gases around the injection point at $t = 550 \text{ s}$. Fig. 16 (left) shows that the injection of gas 2 into the porous medium causes the density of gas 1 (P_1) to decrease around the injection point, and therefore the pore pressure of gas 1 decreases in this region. Further, Fig. 16 (right) shows the increase of the pore pressure due to gas 2 in regions close to the injection point.

Property	Value
Solid phase Lamé modulus, λ	57.7 MPa
Solid phase Lamé modulus, μ	38.6 MPa
Hydraulic conductivity, \tilde{k}_1	0.1 m/s
Hydraulic conductivity, \tilde{k}_2	0.2 m/s
Gas constant, R	$8.32 \text{ m}^3 \cdot \text{Pa} / \text{K} \cdot \text{mol}$

Table 3. Properties of solid and fluid phases.

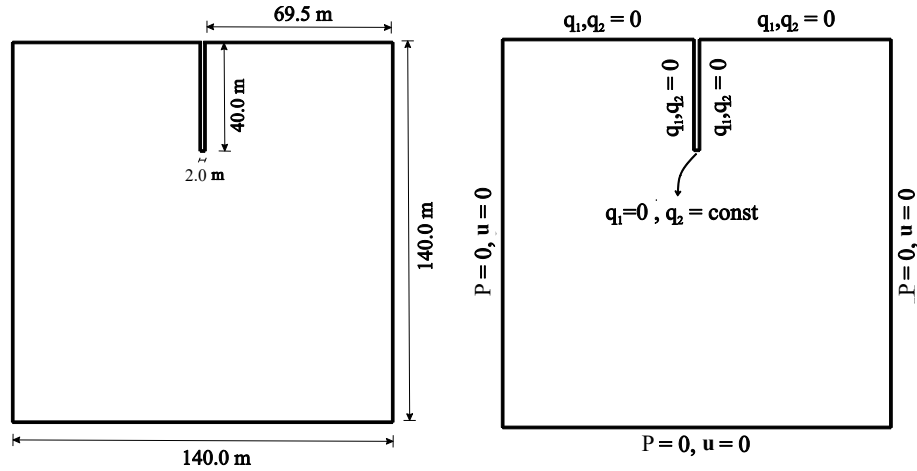


Figure 15. Geometry and boundary conditions.

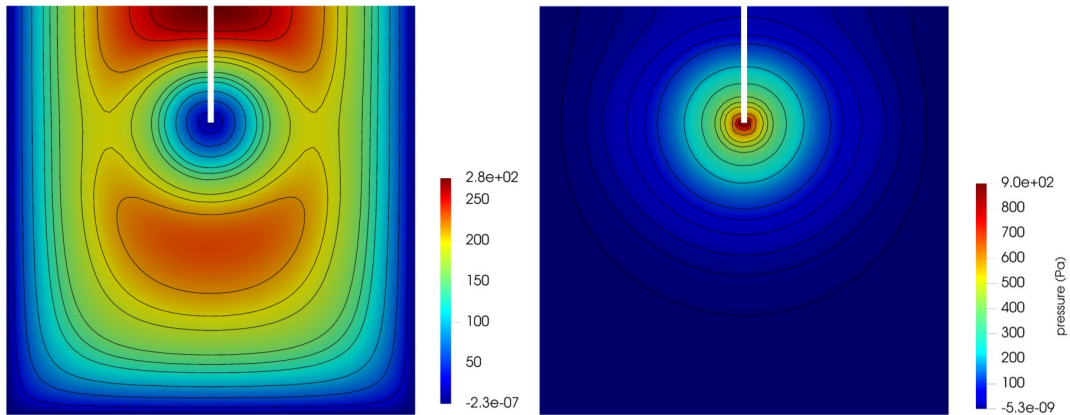


Figure 16. Pore pressure distribution of gas 1 (left) and gas 2 (right) at $t = 550$ s.

Due to the compressibility of fluids, the volume fraction of each gas changes with time and distance from the injection point. Fig. 17 shows the variation of volume fraction of each gas with vertical location below the injection point, at time ($t = 550$ s). After 550 s from the start of the injection, the volume fraction of gas 1 close to the injection point decreases to 0.001 and the volume fraction of gas 2 increases to 0.199. Since the medium initially is saturated with gas 1, we find that the volume fraction of gas 1 tends to 0.2 far from the injection point.

8. Unsaturated Medium with an Incompressible Fluid

In this section, we discuss an unsaturated porous medium consisting of a compressible solid phase, incompressible fluid (liquid) phase, and a compressible fluid (gas) phase, motivated by experimental approaches such as [DPS93].

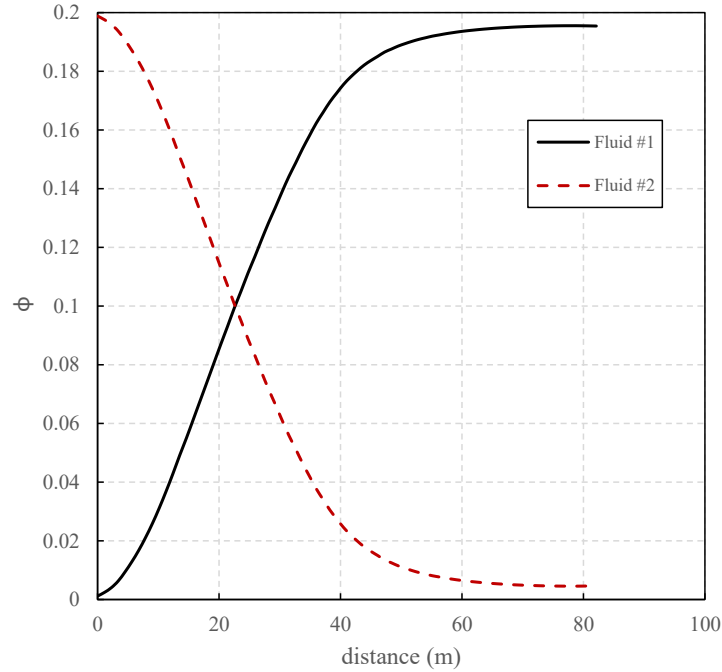


Figure 17. Volume fraction of each fluid component vs. distance from the injection point at $t = 550$ s.

Using the ideal gas model for the compressible fluid phase, the total energy density can be written as:

$$W_0(\mathbf{F}, P_{0g}, P_{0l}) = \phi_s W_{0s}(\mathbf{F}) - P_{0g} RT \left(1 + \frac{3}{2} \log \left(\frac{3}{2} RT \right) - \log \left(\frac{P_{0g} \xi}{J(1 - \phi_s) - \frac{P_{0l}}{\rho_l}} \right) \right) \quad (8.1)$$

Using (2.6), the chemical potential of gas and liquid can be derived as:

$$\eta_{0g} = -RT \left(\frac{3}{2} \log \left(\frac{3}{2} RT \right) - \log \left(\frac{\rho_{0g} \xi}{J(1 - \phi_s) - \frac{P_{0l}}{\rho_l}} \right) \right) \quad (8.2)$$

$$\eta_{0l} = \frac{\rho_g RT}{\rho_l} = \frac{P_g RT}{(1 - \phi_s - \phi_l) \rho_l} \quad (8.3)$$

Further, the flux of gas and liquid can be written as:

$$\mathbf{q}_g = -\phi_g \mathbf{k}_g RT \nabla \rho_g \quad (8.4)$$

$$\mathbf{q}_l = -\phi_l \mathbf{k}_l RT \nabla \rho_l \quad (8.5)$$

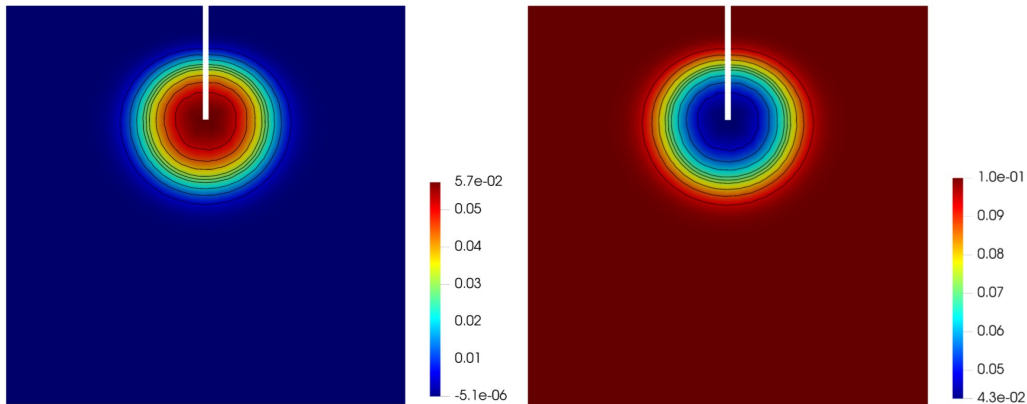
The geometry is the same as Section 7, and the properties of the solid and gas phases are listed in Table 4. We consider a porous medium with initial solid volume fraction $\phi_{0s} = 0.9$, saturated with the ideal gas ($\phi_{0g} = 0.1$ and $p_g = 3300$ Pa at $t = 0$). We then inject the liquid with the flux $q_l = 200$ L/m² s.

Fig. 18 shows the volume fraction distributions for the gas and liquid phases. As expected, injecting the liquid into the porous medium with gas causes the liquid to displace the gas in the pore spaces, and the volume fraction of gas decreases in the vicinity of the injection point. Also, the pore pressure distribution due to the liquid injection is shown in Fig. 19; we see that the highest value of pore pressure is in the vicinity

Property	Value
Solid phase Lamé constant, λ	57.7 MPa
Solid phase Lamé constant, μ	38.6 MPa
True permeability, κ	$1.8 \times 10^{-7} \text{ m}^2$
Gas constant, R	$8.32 \text{ m}^3 \cdot \text{Pa} / \text{K} \cdot \text{mol}$
Gas viscosity, γ_g	$1.8 \times 10^{-5} \text{ Pa s}$
Liquid density, ρ_l	$1000 \text{ kg} / \text{m}^3$
Liquid viscosity, γ_l	0.001 Pa s

Table 4. Properties of the solid and fluid phases.

of the injection point, and tends gradually to the far-field pressure of the gas.

Figure 18. Volume fraction of liquid (left) and gas (right) around the injection point at $t = 200 \text{ s}$.

9. Concluding Remarks

In this study, we have proposed a variational energy-based continuum mechanics framework in the large deformation regime to model coupled fluid transport and deformation in a porous deformable medium. The free energy density function of the porous medium is defined as additively composed of the free-energies of the solid and fluid phases of the medium. The variational structure provides for the standard use of the Finite Element Method to solve the proposed model; in general, variational approaches can provide important advantages for numerical solution [OR12].

The proposed formulation was tested on two benchmark problems, namely Terzaghi's 1-d and Mandel's 2-d consolidation problems. Further, the model enabled the modeling of porous media containing a single (gas-liquid phase transforming) and multiple immiscible fluid phases. Furthermore, the method was used to model the behavior of an unsaturated porous medium. As a specific application of the proposed model, we investigated fluid injection into soil.

An important advantage of the variational formulation, that we are currently investigating and will be reported in the future, is in enabling an overall variational structure to the problem of combining a physics-based approach with a data-driven approach through a Bayesian framework. In addition, plastic effects are important in many realistic situations; it would therefore be useful to extend this model to incorporate powerful variational models for plasticity that have been proposed, e.g. [WMO06, OP04].

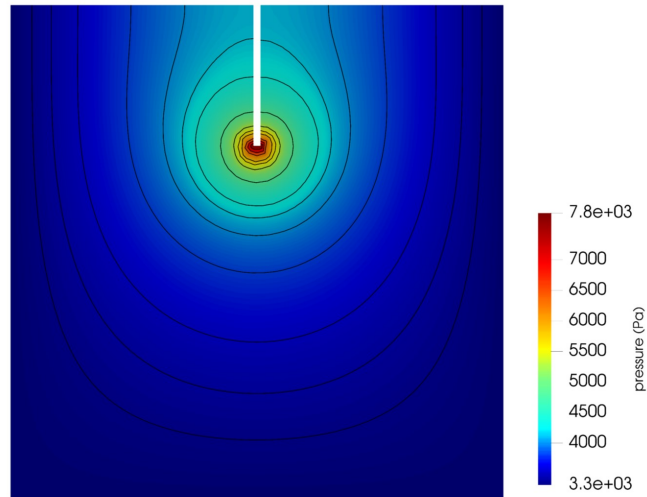


Figure 19. The pore pressure distribution around the injection point at $t = 200$ s.

Author Contributions

All authors contributed to the formulation of the model. Karimi, Walkington, and Dayal contributed to the numerical implementation. All authors contributed to the writing of the paper.

Acknowledgments

We thank the National Science Foundation for support through XSEDE resources provided by Pittsburgh Supercomputing Center. Mina Karimi acknowledges financial support from the Scott Institute. Noel Walkington acknowledges financial support from NSF (DMS 1729478 and DMS 2012259). Kaushik Dayal acknowledges financial support from NSF (CMMI MOMS 1635407, DMREF 1628994), ARO (MURI W911NF-19-1-0245), ONR (N00014-18-1-2528), BSF (2018183), and an appointment to the National Energy Technology Laboratory sponsored by the U.S. Department of Energy. This work was funded (in part) by the Dowd Fellowship from the College of Engineering at Carnegie Mellon University; we thank Philip and Marsha Dowd for their financial support and encouragement. We thank Basant Sharma for alerting to us to typos in a previous version.

Data Availability Statement

A version of the code developed for this work is available at github.com/minakari/Poromechanics.

[AD15a] Vaibhav Agrawal and Kaushik Dayal. A dynamic phase-field model for structural transformations and twinning: Regularized interfaces with transparent prescription of complex kinetics and nucleation. part i: Formulation and one-dimensional characterization. *Journal of the Mechanics and Physics of Solids*, 85:270–290, 2015.

[AD15b] Vaibhav Agrawal and Kaushik Dayal. A dynamic phase-field model for structural transformations and twinning: Regularized interfaces with transparent prescription of complex kinetics and nucleation. part ii: Two-dimensional characterization and boundary kinetics. *Journal of the Mechanics and Physics of Solids*, 85:291–307, 2015.

- [AD17] Vaibhav Agrawal and Kaushik Dayal. Dependence of equilibrium griffith surface energy on crack speed in phase-field models for fracture coupled to elastodynamics. *International Journal of Fracture*, 207(2):243–249, 2017.
- [AK06] Rohan Abeyaratne and James K Knowles. *Evolution of phase transitions: a continuum theory*. Cambridge University Press, 2006.
- [Ana15] Lallit Anand. A derivation of the theory of linear poroelasticity from chemoelasticity. *Journal of Applied Mechanics*, 82(11), 2015.
- [AZ15] Gianluca Alaimo and Massimiliano Zingales. Laminar flow through fractal porous materials: the fractional-order transport equation. *Communications in Nonlinear Science and Numerical Simulation*, 22(1-3):889–902, 2015.
- [BA95] Ronaldo I Borja and Enrique Alarcón. A mathematical framework for finite strain elastoplastic consolidation part 1: Balance laws, variational formulation, and linearization. *Computer Methods in Applied Mechanics and Engineering*, 122(1-2):145–171, 1995.
- [BC96] Lynn Schreyer Bennethum and John H Cushman. Multiscale, hybrid mixture theory for swelling systems—i: balance laws. *International Journal of Engineering Science*, 34(2):125–145, 1996.
- [Bie07] Andreas Bielinski. *Numerical simulation of CO₂ sequestration in geological formations*. 2007.
- [Bio35] Maurice A Biot. Le problem de la consolidation des matieres argileuses sous une charge. *Annaies de la Societe Scientifique de Bruxelles*, pages 110–113, 1935.
- [Bio41] Maurice A Biot. General theory of three-dimensional consolidation. *Journal of applied physics*, 12(2):155–164, 1941.
- [Bio73] Maurice A Biot. Nonlinear and semilinear rheology of porous solids. *Journal of Geophysical Research*, 78(23):4924–4937, 1973.
- [BOKCW20] Quan M Bui, Daniel Osei-Kuffuor, Nicola Castelletto, and Joshua A White. A scalable multigrid reduction framework for multiphase poromechanics of heterogeneous media. *SIAM Journal on Scientific Computing*, 42(2):B379–B396, 2020.
- [Bor04] Ronaldo I Borja. Cam-clay plasticity. part v: A mathematical framework for three-phase deformation and strain localization analyses of partially saturated porous media. *Computer methods in applied mechanics and engineering*, 193(48-51):5301–5338, 2004.
- [Bor05] Ronaldo I Borja. Conservation laws for three-phase partially saturated granular media. In *Unsaturated Soils: Numerical and Theoretical Approaches*, pages 3–14. Springer, 2005.
- [Bor06] Ronaldo I Borja. On the mechanical energy and effective stress in saturated and unsaturated porous continua. *International Journal of Solids and Structures*, 43(6):1764–1786, 2006.
- [Bow82] Ray M Bowen. Compressible porous media models by use of the theory of mixtures. *International Journal of Engineering Science*, 20(6):697–735, 1982.
- [CA10] Shawn A Chester and Lallit Anand. A coupled theory of fluid permeation and large deformations for elastomeric materials. *Journal of the Mechanics and Physics of Solids*, 58(11):1879–1906, 2010.
- [Cou04] Olivier Coussy. *Poromechanics*. John Wiley & Sons, 2004.
- [Cow99] Stephen C Cowin. Bone poroelasticity. *Journal of biomechanics*, 32(3):217–238, 1999.
- [DJB20] Ravindra Duddu, Stephen Jiménez, and Jeremy Bassis. A non-local continuum poro-damage mechanics model for hydrofracturing of surface crevasses in grounded glaciers. *Journal of Glaciology*, 66(257):415–429, 2020.
- [dMPBD18] Robert Buarque de Macedo, Hossein Pourmatin, Timothy Breitzman, and Kaushik Dayal. Disclinations without gradients: A nonlocal model for topological defects in liquid crystals. *Extreme Mechanics Letters*, 23:29–40, 2018.
- [DPS93] DE Dria, GA Pope, and Kamy Sepehrnoori. Three-phase gas/oil/brine relative permeabilities measured under co₂ flooding conditions. *SPE reservoir engineering*, 8(02):143–150, 1993.
- [DSF10] Fernando P Duda, Angela C Souza, and Eliot Fried. A theory for species migration in a finitely strained solid with application to polymer network swelling. *Journal of the Mechanics and Physics of Solids*, 58(4):515–529, 2010.
- [Ehl09] Wolfgang Ehlers. Challenges of porous media models in geo-and biomechanical engineering including electro-chemically active polymers and gels. *International Journal of Advances in Engineering Sciences and Applied Mathematics*, 1(1):1–24, 2009.
- [FEN19] Zhiqiang Fan, Peter Eichhubl, and Pania Newell. Basement fault reactivation by fluid injection into sedimentary reservoirs: Poroelastic effects. *Journal of Geophysical Research: Solid Earth*, 124(7):7354–7369, 2019.

- [FG12] Salvatore Federico and Alfio Grillo. Elasticity and permeability of porous fibre-reinforced materials under large deformations. *Mechanics of Materials*, 44:58–71, 2012.
- [FJK⁺21] Marvin Fritz, Prashant K. Jha, Tobias Köppl, J. Tinsley Oden, Andreas Wagner, and Barbara Wohlmuth. Modeling and simulation of vascular tumors embedded in evolving capillary networks. *Computer Methods in Applied Mechanics and Engineering*, 384:113975, 2021.
- [Gaj10] Alessandro Gajo. A general approach to isothermal hyperelastic modelling of saturated porous media at finite strains with compressible solid constituents. *Proceedings of the Royal Society A: Mathematical, Physical and Engineering Sciences*, 466(2122):3061–3087, 2010.
- [GFA10] Morton E Gurtin, Eliot Fried, and Lallit Anand. *The mechanics and thermodynamics of continua*. Cambridge University Press, 2010.
- [HG79] Majid Hassanzadeh and William G Gray. General conservation equations for multi-phase systems: 1. averaging procedure. *Advances in water resources*, 2:131–144, 1979.
- [HZS08] Wei Hong, Xuanhe Zhao, Jinxiong Zhou, and Zhigang Suo. A theory of coupled diffusion and large deformation in polymeric gels. *Journal of the Mechanics and Physics of Solids*, 56(5):1779–1793, 2008.
- [JA20] Wencheng Jin and Chloé Arson. Fluid-driven transition from damage to fracture in anisotropic porous media: a multi-scale xfem approach. *Acta Geotechnica*, 15(1):113–144, 2020.
- [JJ14] Birendra Jha and Ruben Juanes. Coupled multiphase flow and poromechanics: A computational model of pore pressure effects on fault slip and earthquake triggering. *Water Resources Research*, 50(5):3776–3808, 2014.
- [KM DP22] Mina Karimi, Mehrdad Massoudi, Kaushik Dayal, and Matteo Pozzi. High-dimensional nonlinear bayesian inference of poroelastic fields from pressure data. *submitted*, 2022.
- [KPC07] Natalie Kleinfelder, Moongyu Park, and John H Cushman. Mixture theory and unsaturated flow in swelling soils. *Transport in porous media*, 68(1):69–89, 2007.
- [KPZB12] Samuel CM Krevor, Ronny Pini, Lin Zuo, and Sally M Benson. Relative permeability and trapping of co2 and water in sandstone rocks at reservoir conditions. *Water resources research*, 48(2), 2012.
- [LBR04] Chao Li, Ronaldo I Borja, and Richard A Regueiro. Dynamics of porous media at finite strain. *Computer methods in applied mechanics and engineering*, 193(36-38):3837–3870, 2004.
- [LHA18] Xilin Lü, Maosong Huang, and José E Andrade. Modeling the static liquefaction of unsaturated sand containing gas bubbles. *Soils and foundations*, 58(1):122–133, 2018.
- [MD14] Jason Marshall and Kaushik Dayal. Atomistic-to-continuum multiscale modeling with long-range electrostatic interactions in ionic solids. *Journal of the Mechanics and Physics of Solids*, 62:137–162, 2014.
- [MDW16] Christopher W MacMinn, Eric R Dufresne, and John S Wettlaufer. Large deformations of a soft porous material. *Physical Review Applied*, 5(4):044020, 2016.
- [MM09] Ingo Müller and Wolfgang H Müller. *Fundamentals of thermodynamics and applications: with historical annotations and many citations from Avogadro to Zermelo*. Springer Science & Business Media, 2009.
- [MN12] Maruti Kumar Mudunuru and KB Nakshatrala. A framework for coupled deformation–diffusion analysis with application to degradation/healing. *International journal for numerical methods in engineering*, 89(9):1144–1170, 2012.
- [OP04] M Ortiz and A Pandolfi. A variational cam-clay theory of plasticity. *Computer Methods in Applied Mechanics and Engineering*, 193(27-29):2645–2666, 2004.
- [OR12] John Tinsley Oden and Junuthula Narasimha Reddy. *Variational methods in theoretical mechanics*. Springer Science & Business Media, 2012.
- [PF90] Oliver Penrose and Paul C Fife. Thermodynamically consistent models of phase-field type for the kinetic of phase transitions. *Physica D: Nonlinear Phenomena*, 43(1):44–62, 1990.
- [Rud01] JW Rudnicki. Coupled deformation-diffusion effects in the mechanics of faulting and failure of geomaterials. *Appl. Mech. Rev.*, 54(6):483–502, 2001.
- [Sar66] AM Sarem. Three-phase relative permeability measurements by unsteady-state method. *Society of Petroleum Engineers Journal*, 6(03):199–205, 1966.
- [SB14] Xiaoyu Song and Ronaldo I Borja. Mathematical framework for unsaturated flow in the finite deformation range. *International Journal for Numerical Methods in Engineering*, 97(9):658–682, 2014.
- [Sel13] Antony PS Selvadurai, editor. *Mechanics of poroelastic media*, volume 35. Springer Science & Business Media, 2013.
- [SF73] Gilbert Strang and George Fix. *An Analysis of the Finite Element Method*. Prentice-Hall, 1973.
- [Sim92] Bruce R Simon. Multiphase poroelastic finite element models for soft tissue structures. *Appl. Mech. Rev.*, 45, 1992.

- [SKH⁺19] Shriram Srinivasan, Satish Karra, Jeffrey Hyman, Hari Viswanathan, and Gowri Srinivasan. Model reduction for fractured porous media: a machine learning approach for identifying main flow pathways. *Computational Geosciences*, 23(3):617–629, 2019.
- [SLL⁺20] Zhichen Song, Xiang Li, José J Lizárraga, Lianheng Zhao, and Giuseppe Buscarnera. Spatially distributed landslide triggering analyses accounting for coupled infiltration and volume change. *Landslides*, pages 1–14, 2020.
- [SOS13] WaiChing Sun, Jakob T Ostien, and Andrew G Salinger. A stabilized assumed deformation gradient finite element formulation for strongly coupled poromechanical simulations at finite strain. *International Journal for Numerical and Analytical Methods in Geomechanics*, 37(16):2755–2788, 2013.
- [SWB16] Shabnam J Semnani, Joshua A White, and Ronaldo I Borja. Thermoplasticity and strain localization in transversely isotropic materials based on anisotropic critical state plasticity. *International Journal for Numerical and Analytical Methods in Geomechanics*, 40(18):2423–2449, 2016.
- [TA20] Arash Dahi Taleghani and Milad Ahmadi. Thermoporoelastic analysis of artificially fractured geothermal reservoirs: A multiphysics problem. *Journal of Energy Resources Technology*, 142(8), 2020.
- [TW18] Konstantina Trivisa and Franziska Weber. Analysis and simulations on a model for the evolution of tumors under the influence of nutrient and drug application. *SIAM Journal on Numerical Analysis*, 56(1):542–569, 2018.
- [vSAAGC20] Virginia von Streng, Rami Abi-Akl, Bianca Giovanardi, and Tal Cohen. Morphogenesis and proportionate growth: A finite element investigation of surface growth with coupled diffusion. *arXiv preprint arXiv:2005.10747*, 2020.
- [Wan00] Herbert F Wang. *Theory of linear poroelasticity with applications to geomechanics and hydrogeology*, volume 2. Princeton University Press, 2000.
- [WMO06] Kerstin Weinberg, Alejandro Mota, and Michael Ortiz. A variational constitutive model for porous metal plasticity. *Computational Mechanics*, 37(2):142–152, 2006.