

1 **Museum exhibitions of fossils into commercial products:**
2 **Unexpected outflow of 3D models due to unwritten image policies**

3
4 **Kumiko Matsui^{1,2} and Yuri Kimura^{3,4}**

5
6 ¹ Department of Paleobiology, National Museum of Natural History, Smithsonian Institution,
7 Washington D. C., the United States of America MatsuiK@si.edu

8 ² The Kyushu University Museum, Kyushu University, Fukuoka, Fukuoka, Japan

9 ³ Department of Geology and Paleontology, National Museum of Nature and Science,
10 Tsukuba, Ibaraki, Japan ykimura@kahaku.go.jp

11 ⁴ Institut Català de Paleontologia Miquel Crusafont, ICTA-ICP, Edifici Z. Carrer de les
12 Columnes, s/n., Campus de la Universitat Autònoma de Barcelona, Barcelona, Spain

13

14

15 This manuscript has **not been formally accepted** for publication and is as such a **non- peer**
16 **reviewed preprint**. If accepted in a peer-reviewed journal, the final version of this
17 manuscript will be available via the Peer-review Publication link on the web page.

18 Feel free to contact us if you have any queries or comments; we welcome your feedbacks.

19

20 **Museum exhibitions of fossils into commercial products:**
21 **Unexpected outflow of 3D models due to unwritten image policies**

22

23 **Kumiko Matsui^{1,2} and Yuri Kimura^{3,4}**

24

25 ¹ Department of Paleobiology, National Museum of Natural History, Smithsonian Institution,
26 Washington D. C., the United States of America

27 ² The Kyushu University Museum, Kyushu University, Fukuoka, Fukuoka, Japan

28 ³ Department of Geology and Paleontology, National Museum of Nature and Science,
29 Tsukuba, Ibaraki, Japan

30 ⁴ Institut Català de Paleontologia Miquel Crusafont, ICTA-ICP, Edifici Z. Carrer de les
31 Columnes, s/n., Campus de la Universitat Autònoma de Barcelona, Barcelona, Spain

32 Corresponding Author: Yuri Kimura; e-mail: ykimura.research@gmail.com

33

34

35

36

37

38

39 Key words: photogrammetry; 3D-model, photograph; fossil-replica; museum; museum policy

40

41 **ABSTRACT**

42 Recent innovations and cost reductions in photogrammetry-based 3D modeling have enabled
43 museum visitors to create 3D models based on photographs exhibited in galleries without
44 breaking museum policies. While several museums make 3D museum data available on
45 sharing platforms, museum visitors publish unofficial 3D data belonging to museum exhibits
46 using a photogrammetry-based approach.

47 This study shows that photogrammetry-based 3D models can be generated without
48 breaking conventional photo policies (i.e., no use of flash and tripods), and that museum
49 visitors can create commercial products based on these models. 3D models can enhance the
50 value of science and promote broader and deeper interests in the natural sciences. However,
51 the rights of owners of museum pieces are ambiguous with regard to the dissemination of
52 unofficial data, and this also makes information attributable to the original specimen unclear,
53 which can potentially lead to revenue loss. We propose a set of best practices for museum
54 photo policies, which covers the data use of visitor-generated 3D models of displayed
55 objects.

56
57 museum exhibition/3D model/photogrammetry/museum policies

58

59

INTRODUCTION

60 Actual and scale-sized replicas of original fossils have greatly contributed to research
61 and museum exhibitions in the field of paleontology and other disciplines. Since
62 appropriately choosing molding compounds and casting materials can enhance the precision
63 of fossil replicas, conventional techniques of duplication have supplemented paleontological
64 research, especially for original fossils which are not easily accessible or have strict
65 regulations on use and export. The benefits of molding and casting are clearly seen by the
66 public in museum exhibitions. Many of us must have seen the casts of a complete
67 *Tyrannosaurus rex* skeleton displayed in museums. Museum visitors can appreciate the
68 scientific background of ancient organisms by seeing fossil replicas of original specimens
69 which are otherwise stored in collection rooms. In addition, conventional duplication
70 techniques (i.e., molding and casting) have shown great potential for innovative exhibition
71 styles such as hanging casts of ceratopsian dinosaurs on a wall at the Natural History
72 Museum of Utah (Figure 1A), where a phylogenetic tree is painted. Until a decade ago, fossil
73 replicas for research and exhibition were almost exclusively created using molding and
74 casting techniques [1]. In addition, this complex methodology has been limited due to
75 copyright/ownership restrictions on fossil specimens because fossil replication was conducted
76 internally in research, museum exhibitions, and education.

77 However, with recent developments in technology, 3D printing and digital models
78 have increasingly risen as a new method for creating cheap and accurate fossil replicas [2,3].
79 This non-invasive technique is preferable especially for fragile specimens because 3D-printed
80 replicas can be made more securely with a low risk of breaking the fossils during the
81 replication process. An example of this is the life-sized *Triceratops horridus* fossil replicas
82 based on 3D digital models displayed in the National Museum of Natural History,
83 Smithsonian Institution (USA) (Figure 1B). 3D-printed replicas are also used as educational

84 tools [4,5]. The Florida Museum of Natural History compiled how to obtain and use 3D
85 paleontological data [5].

86 Currently, photogrammetry-based reconstruction allows museum visitors to create
87 digital models of museum displays and even share the models on online platforms. If the
88 source photos were collected against museum policy (e.g., no flashlight or no selfie stick),
89 creating 3D models based on these is considered a violation of museum policy. However, if
90 model makers (i.e., museum visitors) follow the current museum photo policies while
91 creating 3D models of museum displays, museums encounter an ambiguous situation because
92 the copyright of the models technically belongs to the model makers even though the
93 museums own the specimens. In general, 3D models are constructed through two processes:
94 1) capturing photos and 2) creating 3D models from the photos. In this case, photographers
95 own the copyright of the photos used to create 3D models, while the copyright of the 3D
96 models belongs to the model creators. Here, we demonstrate that photogrammetry-based 3D
97 models can be created without breaking existing photo policies, and 3D-printed objects of the
98 models are of decent quality and may be distributed commercially.

99

100 **3D-MODEL OUTFLOW UNDER CONVENTIONAL PHOTO POLICIES**

101 Currently, there is a major drive to make digital 3D models of natural history objects
102 accessible and visible to the public. For example, the National Science Foundation-funded
103 oVert is a research-driven project which shares digital 3D vertebrate anatomical models
104 including high-resolution anatomical data of more than 80% of vertebrate genera to the
105 public [6]. Major academic publishers such as Taylor & Francis also have an official account
106 in Sketchfab [7], a major platform for sharing, buying, and selling 3D content, as well as
107 archiving 3D models, such as in the case of *Journal of Vertebrate Paleontology* [8]. Several
108 museums including the Natural History Museum of Los Angeles County, USA [9], and the

109 Natural History Museum, London, UK [10], have made their fossil collections available to
110 users as open-access 3D models via Sketchfab. In addition to official 3D digital models
111 uploaded and released by museums or academic publishers, many photogrammetry-based 3D
112 models of museum displays have been uploaded by general users. On the Sketchfab platform,
113 we identified the following user-uploaded 3D models: the *Tyrannosaurus rex* specimen
114 (“Black Beauty,” RTMP 81.6.1 at the Royal Tyrrell Museum), a nest of duck-like dinosaur
115 *Maiasaura* (the Natural History Museum, London), and a specimen of the early Ceratopsian,
116 *Protoceratops* (the American Museum of Natural History). These latter examples were
117 “digital-snatched” models generated from photographs taken in the exhibition halls at the
118 above museums. These 3D data have various Creative Commons (CC) licenses [11] defined
119 by uploaders, and some allow them to be used for commercial purposes. These platforms are
120 rapidly developing both in terms of users and model availability. Digitized museum exhibits
121 are freely available online and their contents are used for various purposes. Occasionally,
122 some models are sold under creator copyrights without an official permit by museums or
123 specimen owners (i.e., national or local governments). Museums own their exhibitions;
124 however, natural history specimens are not manmade. Thus, the museum has no copyright.
125 The treatment of copyright holders of 3D files is still under debate, and these are considered
126 uncopyrighted under current laws [12].

127 Discussions about the use of open 3D fossil specimen data have just begun. Some
128 researchers have proposed the best practices for the quality control, publication, storage, and
129 reuse of open data using digital morphology (e.g., [11]), and recent movements toward
130 sharing 3D datasets of paleontological specimens are summarized in Weinberg et al. [12]. In
131 this study, we summarized the photo policies of eight major natural history museums in
132 North America, Europe, Asia, and Oceania, which receive more than two million visitors per
133 year. We then made comparisons of the results of a demonstration of photogrammetry-based

134 3D models and products and suggested the best practices for museum photo policies for

135 fossils which cover the data use of visitor-generated 3D models of displayed objects.

136

MATERIALS AND METHODS

137
138
139
140
141
142
143
144
145
146
147
148
149
150
151
152
153
154
155
156
157
158
159
160

Commercial Products

To test whether we could create good qualified photogrammetry-based 3D models under current policies, we photographed two specimens displayed at the National Museum of Nature and Science in Tokyo, Japan: a fossil of *Hyaenodon* (in Evolution of life – From the Earth’s Origin through Human Existence, Global Gallery) and a cast of *Camarasaurus* skull (Evolution of Life, Exploring the Mysteries of Dinosaur Evolution, Global Gallery). They are displayed in strict accordance with the museum’s current policies (i.e., no flashlight, no additional lighting, no selfie stick, no tripod/monopod) during open hours (Figure 2A). Notably, *Hyaenodon* is displayed behind a glass wall with lighting settings that automatically change from dawn to twilight mode, which is not ideal for professional photogrammetry. A smartphone (iPhone 8: Apple, Inc.) and an SLR digital camera (Canon EOS Kiss X9i: Canon) were chosen as they are popular photographic equipment for photogrammetry. We took photos of *Hyaenodon* with an SLR camera and *Camarasaurus* using a smartphone. HD movie videos along with 100-200 photos of still images which served as 2D images (Figure 2B) were obtained. The video files were converted to still images by a free video to the JPG Converter [13]. To create 3D models, we used Agisoft Metashape v. 1.5 [14], which is an affordable high-end photogrammetric program for small businesses. The default settings were set for the accuracy of the photography alignment and dense clouds. We further designed a smartphone cover with the *Hyaenodon* model and a cup of a *Camarasaurus* skull using the free 3D modeling software, Meshmixer [15], to serve as samples of potential commercial products.

Photo Policies

161 To compare photo policies, we compiled photo regulations and the number of
162 museum visitors, which serves as an indicator of potential influence on people, from the
163 webpages of these museums. We chose to compare the photo policies of eight major
164 museums from North America, Europe, Asia, and Oceania, which receive 20 million visitors
165 per year. The eight chosen museums were as follows: American Museum of Natural History,
166 USA (North America), National Museum of Natural History, Smithsonian Institution in USA
167 (North America), Royal Tyrrell Museum in Canada (North America), the Natural History
168 Museum in UK (Europe), Muséum National D'histoire Naturelle in France (Europe),
169 Museum Für Naturkunde in Germany (Europe), National Museum of Natural History in
170 Tokyo, Japan (Asia), and Museum of New Zealand Te Papa Tongarewa (Oceania). The
171 results are shown in Table 1.
172

“DIGITAL SNATCH” DISPLAYED OBJECTS

173

174 In the National Museum of Nature and Science in Tokyo, Japan, the photo policy is
175 shown at every building entrance, booklets, and on its website [16]. We were able to obtain
176 photos without violating any of the museum’s photo policies of the National Museum of
177 Nature and Science in Tokyo, Japan, and we used these to generate 3D models of decent
178 quality and a virtual commercial product from the photogrammetry-based 3D model (Figure
179 3). We spent only a few minutes photographing the objects and used all the photo and video
180 data to create the models. Based on photos and videos taken through a glass wall, we
181 obtained 3D models of objects displayed below eye level at sufficiently good quality for
182 printing, selling, or sharing (Figures 2A and 2C). On the other hand, complete 3D models
183 were not acquired for large specimens or those displayed in high places because the
184 dorsal/backside of the specimens could not be reached by visitors.

185 The *Hyaenodon* and *Camarasaurus* skull specimens were not displayed under
186 suitable photographic conditions for photogrammetry. The exhibition hall had variable light
187 conditions ranging from dark (dawn) to bright (daytime) modes. Even so, the software
188 algorithms were able to align photos to generate 3D digital models that retain the extreme
189 morphological details of the surface. Once the 3D models are uploaded to online data-sharing
190 platforms, such as Sketchfab [17] or pinshape [18], they can be distributed rapidly. A third
191 party can download them to make commercial products for profit. This “digital snatch” of a
192 museum exhibition is easier than ever because of widespread advancements in
193 photogrammetry techniques. Currently, the market price of photogrammetry software ranges
194 from hundreds to thousands of dollars (e.g., Reality Capture [19], Agisoft Metashape [14],
195 3DF Zephyr [20], ReCap [21]). There are also free, open-source photogrammetry programs
196 such as 3DF Zephyr Free (3D Flow) and smartphone applications (e.g., Qlone: EyeCue
197 Vision Technologies). A “digital snatch” would potentially reduce museum profit, which

198 might be a critical issue for privately-owned museums. Although many natural history
199 museums are managed as public properties, not all museums are publicly funded, as in the
200 National Museum of Nature and Science, Tokyo, Japan.
201

MEGA NATURAL MUSEUMS PHOTO POLICIES

202
203
204
205
206
207
208
209
210
211
212
213
214
215
216
217
218
219
220
221

The photo policies of eight mega natural history museums in North America, Europe, Asia, and Oceania are listed in Table 1. We compared private use regulations, non-commercial use, and secondary use. All museums permit personal use of their exhibition photos and restrict commercial use by requesting application forms (along with monetary charges in some cases), whereas non-commercial cases are handled in various ways. Among the museums listed in Table 1, only two museums (the American Museum of Natural History and the National Museum of Nature and Science) state policies for secondary use. These say that museum visitors and the people who download photos collected by museum visitors must use them in a personal capacity (Table 1).

Importantly, we emphasize that there should be no conflict between public property and limiting data leakage. For example, the 3D model of the most famous dinosaur, the *Tyrannosaurus rex*, known as “SUE” (PR 2081), is officially available for education and creation on the official Sketchfab account of the Field Museum [23], but the data is not downloadable. This is an excellent example of releasing 3D data while retaining the copyright. Whether user-generated 3D data of displayed objects is appropriate, if museums prefer to control the secondary use of these data, conventional photo policies (e.g., no flash, no tripod stands) are insufficient.

222
223
224
225
226
227
228
229
230
231
232
233
234
235
236
237
238
239
240
241
242
243
244
245
246

CC 0 IN NATURAL SCIENCES

The Smithsonian Institution (including 19 museums, 12 libraries, nine research institutes, and one zoo) announced the launch of the Smithsonian Open Access wherein 2.8 million of their digital collection images were released into the public domain [24]. Under the CC0 policy, digital images including 2D and 3D data of the Smithsonian collections published by the Smithsonian Institution [24] can be used without permission and payment for any purpose [25]. Creative Commons (CC) licenses are standardized “communication tools” for creators to give various degrees of permission to share and use their creative work. CC licenses are standardized ways of granting public permission to use their work under copyright law. There are six different license types: CCBY, CC BY-SA, CC BY-NC, CC BY-NC-SA, CC BY-ND, and CC BY-NC-ND. CC refers to Creative Commons, BY means that the creator must give original credit, SA means that users must share Adaptations under the same terms, NC means that only noncommercial uses of the work are permitted, and ND means that no derivatives or adaptations of the work are permitted. In addition, CC licenses have a subcategory CC0. CC0 means “no rights reserved,” waiving all rights of creators and placing their work as much as possible in the public domain in that users can reuse these works for any purposes without restriction under copyright or database law [26]. In the case of the Smithsonian, this effort has the imprimatur of its administration. Regarding the Smithsonian OA, Smithsonian Secretary Lonnie G. Bunch III stated that the institutional effort aimed for “*viewers to become collaborators to engage critically, to think expansively, to imagine freely*”[27]. Before the CC0 policy, the Smithsonian Institution allowed users to download their copyrighted data under their original policies: for non-commercial and educational uses, subject to fair use under copyright law. The new CC0 policy opens the door of the Smithsonian Institution to people in countries that do not declare fair use, such as Japan, where we are located. By becoming the first natural history museum to enact the CC0

247 policy for 3D datasets, they showed that museum collections belong to the public common
248 and removed economic and legal barriers which promote equity by permitting anyone in the
249 world to make creations based on their exhibited collections.

250 The Natural History Museum in London and the Field Museum also released 2D
251 images with limited data under the CC0 policy, but these do not include 3D models [28,29].
252 The former museum has released many downloadable 3D models of important specimens
253 (e.g., Darwin's fossil collection: The Natural History Museum, 2017) under the CC BY-NC
254 4.0 license, but not the CC0 license. Similar efforts have been undertaken by other small
255 museums (e.g., Western Science Center: [30] Charleston Museum: [31]; College of
256 Charleston: [32]).

257

258 **DESIRABLE PHOTO POLICIES TUNED FOR 3D DATA**

259 Open-access sharing platforms for 2D and 3D images are increasingly popular, and
260 some of them explicitly state their copyright policy and other terms of use both for data
261 authors and users. In some cases, uploaders (e.g., data contributors as well as data authors in
262 most cases) can determine the copyright holder by selecting copyright options during the
263 uploading process, which may become an issue as discussed below.

264 In paleontological research, 3D digitization and imaging techniques have already been
265 used as research tools (e.g., [33–36]); however, it is only recently that research-driven
266 archives such as Digimorph [37] and MorphoSource [38] have become accessible to a more
267 general audience who are curious to see 3D models of organisms, and allowed them to
268 download the raw CT data. In MorphoSource, if *the restriction option* is set by data
269 contributors (i.e., uploaders, data authors), data users are required to state the purpose of
270 using the 3D data before they are permitted to download data or send a request for download
271 directly to the uploader. All data contributors are required to obtain official permission from
272 specimen owners before uploading (see [39]).

273 Nowadays, 3D digital models can be shared worldwide through major sharing
274 websites, such as Sketchfab [17]. In Sketchfab, data contributors can set a Creative Commons
275 license for each 2D or 3D object, but they are not required to obtain specimen owners'
276 permissions. In this case, 3D data can easily lose important metadata attributes associated
277 with the data and specimen, such as the location of the original specimen and specimen
278 numbers.

279 Our results show that under general photo policies, visitors can generate
280 photogrammetry-based 3D models of displayed objects and share these models without the
281 authorization of museums. If museums desire to restrict unwanted duplicates while

282 displaying photos in their exhibition galleries, we suggest creating or revising handling

283 policies for 3D models of displayed objects and stating these explicitly to visitors.

284

285
286
287
288
289
290
291
292
293
294
295
296
297
298
299
300
301
302
303
304
305
306
307
308
309

**BEST PRACTICES FOR DIGITAL ASSETS OF DISPLAYED 3D
OBJECTS IN NATURAL HISTORY MUSEUMS**

Here, we propose the best practices for museum photo policies that cover the data use of visitor-created 3D models of displayed objects.

- 1) Creating models: State whether museums allow visitors to take photographs to convert them into 3D models. It is important for each museum to decide on the management of the 3D data of its exhibitions.
- 2) Copyright of 3D models: Clarify the ownership of any type of 3D model of displayed objects as a part of photo policies. During the COVID-19 pandemic (2020-ongoing), virtual reality or augmented reality exhibition could be considered as a new source of museum income. A statement about ownership is especially important when museums plan to sell 3D-printed replicas or other products,
- 3) Commercial versus non-commercial use: Clearly state whether visitors can publish their models for commercial or non-commercial use. For example, many museums display replica casts of fossil specimens from other museums. The copyright of the original specimens must be clarified before publication. Considering these circumstances, we recommend specifying whether a piece in an exhibit is CC BY-NC-ND. In some cases, museums that release 3D models on websites (e.g., the Natural History Museum in London and Charleston Museum, South Carolina in USA) retain the non-commercial use of their digital data in sharing platforms. The Smithsonian allows for the use of their published 3D models in CC0.
- 4) Sharing models: Whether museums allow visitors to share photogrammetry-based 3D models created by museum visitors with anonymous people on the Internet. If allowed, we recommend that museums request model creators to place the following in their 3D data files:

310 scientific information of the objects (e.g., scientific name, locality, housed institution,
311 specimen number), data acquired to date, data acquisition equipment, and software.-The
312 attribute information is easily lost during any allocation process of the 3D models when
313 copying and pasting files. However, these metadata attributes are the most valuable
314 information for museum specimens. If the 3D data retains its associated information, the data
315 could be used for future educational and research purposes.

316 5) Clear notification: The above policies must be stated in plain language and easily spotted
317 by visitors in museum galleries. It would be better to announce these repeatedly in multiple
318 manners, such as through interactive kiosks, during the ticket-purchasing/reservation process,
319 or on the museum's website. We believe that it is important to retain substantial museum-
320 visitor relationships.

321

322
323
324
325
326
327
328
329
330
331
332
333
334

CONCLUSIONS

This study proposes handling policies for user-generated 3D models of displayed objects. Open access policies for the reproduction of museum specimens are becoming a global trend, being promoted and implemented at different rates and in different ways in countries across the globe. While some institutions have adopted fully open access policies for their 2D and 3D digital data, some museums maintain stricter copyrights. This issue has not been fully discussed in many contexts, including that of small museums. Cost reduction in 3D-scanning equipment and photogrammetry software will facilitate the creation of 3D models of objects displayed in exhibition halls. These “unofficial” models have already been uploaded to popular data-sharing platforms such as Sketchfab. Once 3D digital models of displayed objects are created by a third party, rapid online distribution cannot be controlled by museums that own original models.

335 **Competing Interests**

336 We have no competing interests.

337

338

339 **Authors' contributions**

340 Both authors equally contributed to the draft.

341

342

343 **Funding**

344 Financial support was provided by the National Museum of Nature and Science, JSPS

345 KAKENHI Grant Numbers 21K14031, 19J0041, 18K13650, JP15H06884, and the Qdai-

346 jump Research Program Grant Number Wakaba Project 02219 and 01220.

347

348

349 **Research Ethics**

350 An ethical assessment was not required prior to conducting our research.

351

352

353 **Acknowledgments**

354 We thank Lauren Debussy and Nicholas D. Pyenson for providing constructive comments on

355 our manuscript.

356

357

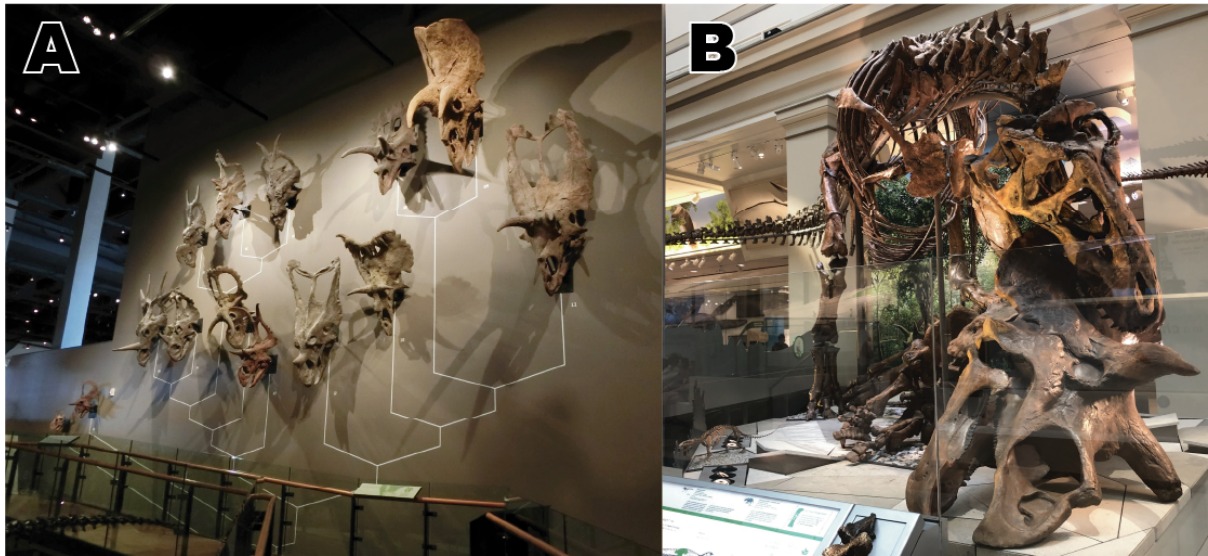
REFERENCES

- 358 1. Leiggi P, May P. Vertebrate Paleontological Techniques: Methods of Preparing and
359 Obtaining Information. Cambridge: Cambridge University Press; 2005.
- 360 2. Falkingham P. Acquisition of high resolution three-dimensional models using free,
361 open-source, photogrammetric software. *Palaeontol Electron.* 2012;15: 1T:15p.
362 doi:10.26879/264
- 363 3. Das AJ, Murmann DC, Cohn K, Raskar R. A method for rapid 3D scanning and
364 replication of large paleontological specimens. Raia P, editor. *PLoS One.* 2017;12:
365 e0179264. doi:10.1371/journal.pone.0179264
- 366 4. Johnson EH, Carter AM. Defossilization: A Review of 3D Printing in Experimental
367 Paleontology. *Front Ecol Evol.* 2019;7: 1–7. doi:10.3389/fevo.2019.00430
- 368 5. Ziegler MJ, Perez VJ, Pirlo J, Narducci RE, Moran SM, Selba MC, et al. Applications
369 of 3D Paleontological Data at the Florida Museum of Natural History. *Front Earth Sci.*
370 2020;8: 1–20. doi:10.3389/feart.2020.600696
- 371 6. Hoose N van. oVert. 2017 [cited 15 Mar 2020]. Available:
372 <https://www.floridamuseum.ufl.edu/science/overt/>
- 373 7. Sketchfab. Sketchfab. 2021. Available: <https://sketchfab.com/>
- 374 8. Skechfab. Taylor & Francis. 2017 [cited 15 Mar 2020]. Available:
375 <https://sketchfab.com/taylorandfrancis>
- 376 9. Obied C, Lopez S, Rhue V. 3D Digitization of the NHMLA Vertebrate Fossil Type
377 Collection. 2019 [cited 15 Mar 2020]. Available:
378 [https://sketchfab.com/blogs/community/3d-digitization-of-the-nhmla-vertebrate-fossil-](https://sketchfab.com/blogs/community/3d-digitization-of-the-nhmla-vertebrate-fossil-type-collection/)
379 [type-collection/](https://sketchfab.com/blogs/community/3d-digitization-of-the-nhmla-vertebrate-fossil-type-collection/)
- 380 10. Skechfab. NHM_Imaging. 2016 [cited 15 Mar 2020]. Available:
381 https://sketchfab.com/NHM_Imaging

- 382 11. Creative Commons. Creative Commons. 2021 [cited 18 May 2021]. Available:
383 <https://creativecommons.org/>
- 384 12. Weinberg M. What's the Deal with Copyright and 3D Printing? Washington, D.C.,
385 USA: Public Knowledge; 2013. Available:
386 [https://www.publicknowledge.org/files/What's the Deal with Copyright_ Final
387 version2.pdf](https://www.publicknowledge.org/files/What's%20the%20Deal%20with%20Copyright_Final%20version2.pdf)
- 388 13. Digital Wave. Free Video to JPG Converter. 2020 [cited 15 Mar 2020]. Available:
389 <https://www.dvdvideosoftware.com/products/dvd/Free-Video-to-JPG-Converter.htm>
- 390 14. Agisoft LLC. Agisoft Metashape. 2018 [cited 15 Mar 2020]. Available:
391 <https://www.agisoft.com/>
- 392 15. Autodesk. Meshmixer. 2017 [cited 15 Mar 2020]. Available:
393 <http://www.meshmixer.com/>
- 394 16. National Museum of Nature and Science. General Information. 2020 [cited 31 Oct
395 2020]. Available: <https://www.kahaku.go.jp/userguide/access/index.html>
- 396 17. Skechfab. Skechfab. 2012 [cited 15 Mar 2020]. Available: <https://sketchfab.com/>
- 397 18. Pinshape. pinshape. 2016 [cited 28 Aug 2021]. Available: <https://pinshape.com/>
- 398 19. Capturing Reality. Reality capture. 2016 [cited 15 Mar 2020]. Available:
399 <https://www.capturingreality.com/>
- 400 20. 3D Flow. 3DF Zephyr. 2014 [cited 15 Mar 2020]. Available:
401 <https://www.3dflow.net/3df-zephyr-pro-3d-models-from-photos/>
- 402 21. Autodesk. ReCap. 2020 [cited 15 Mar 2020]. Available:
403 <https://www.autodesk.com/products/recap/overview>
- 404 22. EyeCue Vision Technologies. Qlone. 2017 [cited 28 Aug 2021]. Available:
405 <https://www.qlone.pro/>

- 406 23. Sketchfab. fieldmuseumeducation. 2018 [cited 28 Aug 2021]. Available:
407 <https://sketchfab.com/fieldmuseumeducation>
- 408 24. Smithsonian Institution. Smithsonian Open Access. 2020 [cited 18 Feb 2021].
409 Available: <https://www.si.edu/openaccess>
- 410 25. Fisher A, St.Thomas L. Smithsonian Releases 2.8 Million Free Images for Broader
411 Public Use. 2020 [cited 28 Aug 2021]. Available:
412 [https://www.si.edu/newsdesk/releases/smithsonian-releases-28-million-free-images-](https://www.si.edu/newsdesk/releases/smithsonian-releases-28-million-free-images-broader-public-use)
413 [broader-public-use](https://www.si.edu/newsdesk/releases/smithsonian-releases-28-million-free-images-broader-public-use)
- 414 26. Creative Commons. CC0 “No Rights Reserved.” 2020 [cited 15 Mar 2020]. Available:
415 <https://creativecommons.org/share-your-work/public-domain/cc0/>
- 416 27. Bunch III LG. Secretary Bunch’s Reflections on Smithsonian Open Access. In:
417 Smithsonian [Internet]. 2020 [cited 10 Nov 2021]. Available:
418 [https://www.si.edu/openaccess/updates/opening-doors-imagination-secretary-bunchs-](https://www.si.edu/openaccess/updates/opening-doors-imagination-secretary-bunchs-reflections-smithsonian-open-access)
419 [reflections-smithsonian-open-access](https://www.si.edu/openaccess/updates/opening-doors-imagination-secretary-bunchs-reflections-smithsonian-open-access)
- 420 28. Field Museum. Use of collections data and images. 2021 [cited 15 May 2021].
421 Available: [https://www.fieldmuseum.org/science/research/use-collections-data-and-](https://www.fieldmuseum.org/science/research/use-collections-data-and-images)
422 [images](https://www.fieldmuseum.org/science/research/use-collections-data-and-images)
- 423 29. The Natural History Museum L. Digitising Darwin’s Fossil Mammals. 2017 [cited 15
424 May 2021]. Available: [https://www.nhm.ac.uk/our-science/our-work/digital-](https://www.nhm.ac.uk/our-science/our-work/digital-collections/digital-collections-programme/DarwinsFossils.html)
425 [collections/digital-collections-programme/DarwinsFossils.html](https://www.nhm.ac.uk/our-science/our-work/digital-collections/digital-collections-programme/DarwinsFossils.html)
- 426 30. Skechfab. WesternScienceCenter. 2021 [cited 15 May 2021]. Available:
427 <https://sketchfab.com/WesternScienceCenter>
- 428 31. Skechfab. The Charleston Museum. 2020 [cited 15 May 2021]. Available:
429 <https://sketchfab.com/charlestonmuseum>

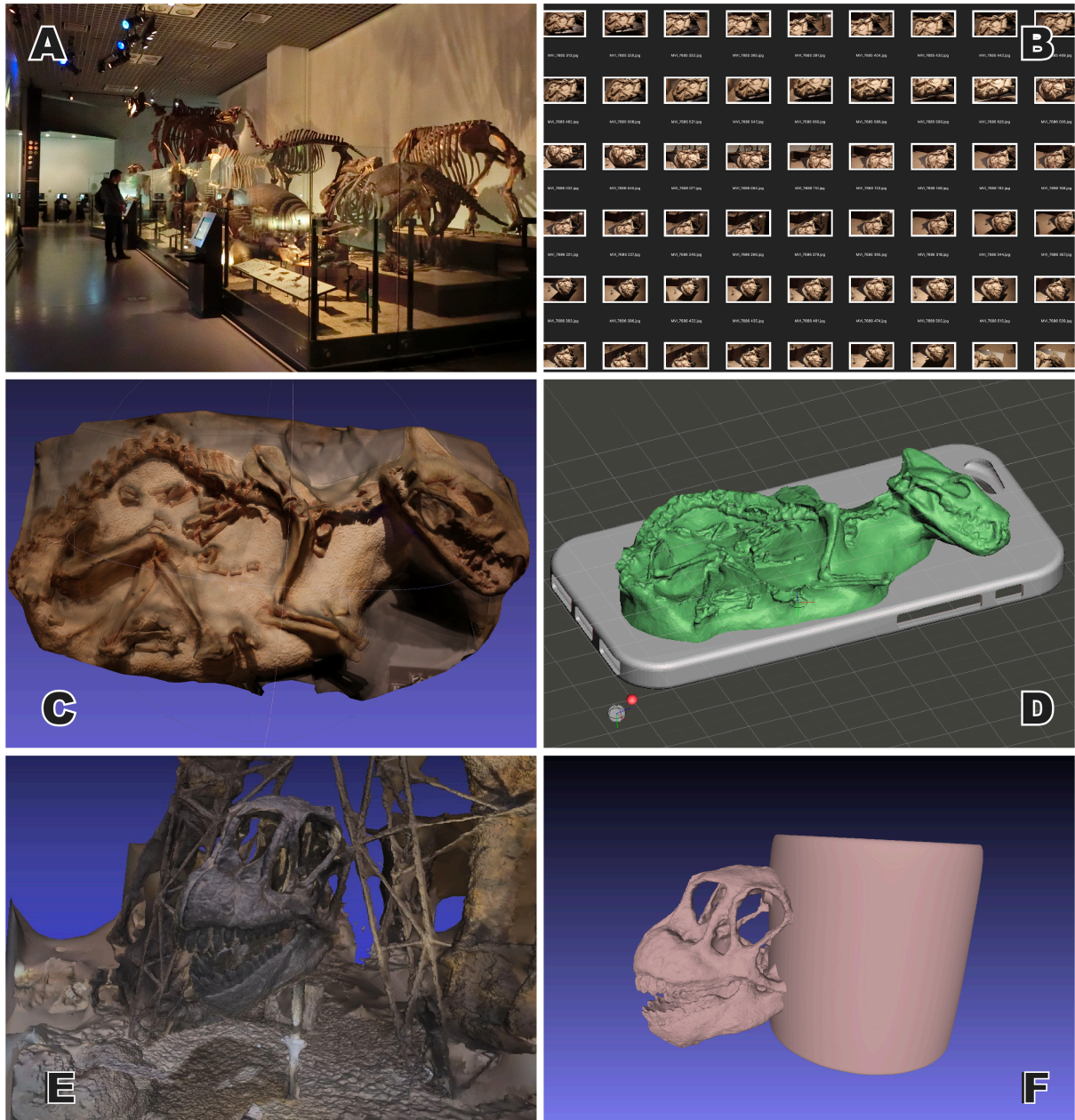
- 430 32. Skechfab. C of C Natural History Museum. 2019 [cited 15 May 2021]. Available:
431 <https://sketchfab.com/CofCNaturalHistoryMuseum>)
- 432 33. Rowe T, Frank LR. The Disappearing Third Dimension. *Science* (80-). 2011;331:
433 712–714. doi:10.1126/science.1202828
- 434 34. Lewis D. The fight for control over virtual fossils. *Nature*. 2019;567: 20–23.
435 doi:10.1038/d41586-019-00739-0
- 436 35. Matsui K, Karasawa T. 3D models related to the publication: Interacting with the
437 inaccessible: utilization of multimedia-based visual contents of Japan’s National
438 Monument, the *Taniwhasaurus mikasaensis* (Mosasauridae) holotype for educational
439 workshops at Mikasa City Museum. *MorphoMuseum*. 2020;6: e106.
440 doi:10.18563/journal.m3.106
- 441 36. Karasawa T, Matsui K. Interacting with the inaccessible: utilization of multimedia-
442 based visual contents of Japan’s National Monument, the *Taniwhasaurus mikasaensis*
443 (Mosasauridae) holotype for educational workshops at Mikasa City Museum. *Fossils*.
444 2020;108: 3–10. doi:10.14825/kaseki.108.0_3
- 445 37. Rowe T. A National Science Foundation Digital Library at The University of Texas at
446 Austin. 2002 [cited 28 Aug 2021]. Available: <http://www.digimorph.org/>
- 447 38. Boyer DM, Gunnell GF, Kaufman S, McGearry TM. MORPHOSOURCE: archiving
448 and sharing 3-D digital specimen data. *Paleontol Soc Pap*. 2016;22: 157–181.
449 doi:10.1017/scs.2017.13
- 450 39. Davies TG, Rahman IA, Lautenschlager S, Cunningham JA, Asher RJ, Barrett PM, et
451 al. Open data and digital morphology. *Proc R Soc B Biol Sci*. 2017;284.
452 doi:10.1098/rspb.2017.0194
- 453
454



456

457 **FIGURE 1** Museum exhibitions using replica fossils. A: An exhibition of the phylogenetic
458 relationships of ceratopsian dinosaurs using giant ceratopsian dinosaur skull replicas at the
459 Natural History Museum of Utah, USA; B: the nation's *T. rex* (*Tyrannosaurus rex* specimen,
460 nicknamed Wankel' rex, USNM PAL 555000) decapitating a *Triceratops horridus* (USNM
461 PAL 500000) at the David H. Koch Hall of Fossils – Deep Time, at National Museum of
462 Natural History, Smithsonian Institution, USA.

463

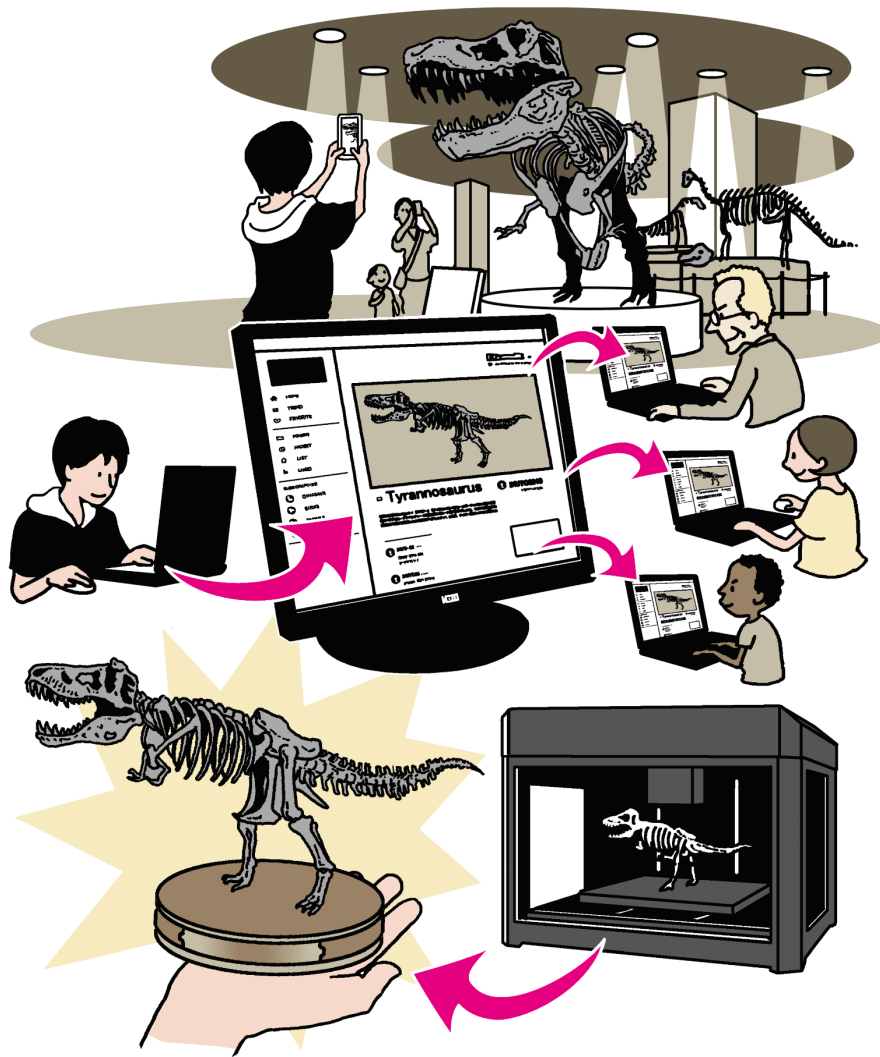


464

465 **FIGURE 2.** Photogrammetry-based 3D models of the *Hyaenodon* and *Camarasaurus* skulls,
 466 and their virtual products.

467 A: Exhibition gallery at the National Museum of Nature and Science, Tokyo, Japan. Fossils
 468 were displayed behind the glass walls. Lighting conditions changed from dawn to twilight;
 469 however, walkways are dim. These conditions are generally not ideal for photogrammetry
 470 [14]. B: Photos of *Hyaenodon* displayed in a permanent exhibition gallery. These were taken
 471 under museum photo policies and later used to create a photogrammetry-based 3D model. C:
 472 Photogrammetry-based 3D model of *Hyaenodon*. It was constructed using the Agisoft

473 Metashape [14]. D: Original smartphone cover as a virtual product made using the
474 *Hyaenodon* model. E: Photogrammetry-based 3D model of *the Camarasaurus* skull. It was
475 constructed using the Agisoft Metashape [14]. F: Original mug as a virtual product made
476 using the *Camarasaurus* skull model. We merged the *Camarasaurus* skull model and a 3D
477 model of a mug in the Meshmixer [15].
478



479 **FIGURE 3.** From photographs of a museum exhibit to a 3D-printed product in hand.
480 Innovation and cost reduction of photogrammetry can assist museum visitors in making 3D
481 digital models based on photographs taken in the exhibition hall without breaking museum
482 policies and allow them to publish these to sharing platforms. Illustrated by Hayanon,
483 Hayanon's Science Manga Studio (<https://www.hayanon.jp/>).
484

485 **Table 1** Policies about photography in major natural history museums worldwide.

486

MUSEUM NAME	PERSO NAL USE	NON- COMMERCIAL USE	COMME RCIAL USE	SECON DARY USE	NUMBER OF VISITORS (2019)	REFE RENC ES
American Museum of Natural History, USA	Permitted	Application required	Restricted	Restricted	5,000,000	American Museum of Natural History (2020), Rubin (2019)
National Museum of Natural History, Smithsonian Institution, USA	Permitted	Permitted	Application required	Not mentioned	4,200,000	National Museum of Natural History, (2017, 2020), Rubin (2019)
Royal Tyrrell Museum, Canada	Permitted	Permitted	Application required	Not mentioned	1,300,000	Royal Tyrrell Museum (2020), Royal Tyrrell Museum (2020b)
The Natural History Museum, UK	Permitted	Application required and/or Charge required	Application required	Not mentioned	5,424,000	The Natural History Museum (2020a, 2020b), Rubin (2019)
MUSÉUM NATIONAL D'HISTOIRE NATURELLE, France	Permitted	Application required and/or Charge required	Charge required	Not mentioned	3,325,000	Muséum national d'Histoire naturelle (2020a, 2020b, 2020c)
Museum Für Naturkunde, Germany	Permitted	Permitted	Charge required	Not mentioned	737,000	The Museum für Naturkunde (2020), Museum

National Museum Of Natural History, Tokyo, Japan	Permitted	Application required	Charge required	Application required	2,460,000	m für Naturkunde Berlin (2020), National Museum of Nature and Science (2020a, 2020b), Rubin (2019)
MUSEUM OF NEW ZEALAND TE PAPA TONGAREWA	Permitted	Permitted	Application required	Not mentioned	1,548,000	Museum of New Zealand Te Papa Tongarewa, (2019, 2021a, b)

487

488