

1 **Uncertainties in Water Scarcity Index due to water use and climate changes: Case of**
2 **two Legal Amazon watersheds**

3
4 Paulo Rógenes Monteiro Pontes^{1*}; José Rafael de Albuquerque Cavalcanti¹; Edivaldo Afonso de
5 Oliveira Serrão¹; Adayana Maria Queiroz de Melo¹; Danieli Mara Ferreira¹; Rosane Barbosa Lopes
6 Cavalcante¹

7
8 ¹ Vale Institute of Technology—Sustainable Development (ITV-DS), Belém 66055-090, PA, Brazil

9 *Corresponding author (p.rogenes@gmail.com)

10
11 This manuscript has not yet undergone peer-review. Subsequent versions of this manuscript
12 may have slightly different content. If accepted, the final version of this manuscript will be
13 available via the 'Peer-reviewed Publication DOI' link on the right-hand side of this webpage.
14 Please feel free to contact the corresponding author.

15
16 **Funding:** We would like to thank to Vale S.A and ITV (Instituto Tecnológico Vale / Vale Institute of
17 Technology). This paper is a scientific product funding by Vale S.A/ITV under the code
18 RBRS000603.MC (Project name: "Monitoramento de eventos críticos e subsídios para gestão de
19 recursos hídricos em bacias de atuação da Vale").

20 **Conflicts of Interest:** The authors declare that they have no known competing financial interests or
21 personal relationships that could have appeared to influence the work reported in this paper.

22 **Author Contribution:** Conceptualization: PRMP, RBLC; Investigation: PRMP, RBLC, EAOS;
23 Methodology: PRMP, RBLC, JRAC, EAOS, AMQM, DMF; Writing – original draft: PRMP, RBLC,
24 JRAC, EAOS, AMQM, DMF.

25
26 **Abstract:** Water scarcity is a major global problem with the potential to impact
27 socioeconomic development and the environment. Currently, mitigating issues related to the
28 lack of water has become an aim for the public and private sectors. Water scarcity can be
29 estimated by the ratio between water use (withdrawal or consumption) and water availability
30 (a minimum discharge), named Water Stress Index (WSI). But some uncertainties can
31 influence the perception of water scarcity, such as population growth, land cover, climate
32 changes, uncontrolled water use, and the scale at which the WSI is evaluated. To improve
33 the knowledge about water management in two basins in eastern Legal Amazon, We
34 estimated WSI at unit-catchments scale from MGB hydrologic model, water use data, and
35 climate change projections. Our results showed a safe water situation in most parts of the
36 basins, but first-order unit-catchments need more attention due to high WSI values being
37 able to compromise downstream water use.

38
39 **Key-words:** Water scarcity, water stress index, climate change, water availability, Legal
40 Amazon

41
42
43
44
45
46
47

1 1. Introduction

2 Water scarcity is a general term for the lack of water availability. The term is often used to
3 evaluate availability in a long-term situation where water restrictions are imposed for its
4 multiple uses (Smakhtin et al., 2004). To better understand the water balance and availability
5 in each use scenario under scrutiny, it is usual to compute a water scarcity index. Water
6 Scarcity Indexes vary and are defined with an emphasis on a specific subject, such as water
7 quantity, water quality, water withdrawal, water shortage, and droughts (Liu et al., 2016).
8 Using an index for defining the availability (or the lack of) is common and aids the decision-
9 making process to better prioritize water planning.

10 Currently, the Water Scarcity Index is available on a broader scale. However, the decision-
11 making process in water planning needs information on local or regional scales (Castro et
12 al., 2018). For instance, global scale studies indicate a low degree of water scarcity in Brazil
13 (ANA, 2019), which is contradictory when analyzing data, especially in the northeast region,
14 where aridity and desertification due to droughts are also an issue (Brêda et al., 2020;
15 Sathler, 2021). Using a global scale index tends to generalize hypotheses and results, giving
16 a false sentiment of comfort due to the Brazilian global water availability. Nonetheless, the
17 reality of specific sites in Brazil is different. There are situations of a permanent water
18 shortage (Teixeira et al., 2021) or an intermittent water scarcity issue in major cities
19 (Millington, 2018).

20 From a strictly quantitative point-of-view local or regional studies face the complex problem
21 of correcting accounts for water availability. Changes in land cover, population growth,
22 regional or even national economic drivers, and climate change are only a few features that
23 can change water availability long-term (Dehghani et al., 2022). On top of that, the
24 uncontrolled change in water use is much more prominent and difficult to estimate than the
25 change in the natural availability in a river basin. Additionally, the correct estimation of WSI
26 depends upon the water availability projection, which can differ regarding water withdrawal
27 or water consumption. Using one of the two water depletion rates changes the WSI and can
28 lead to different conclusions while planning the water use for river basins in the future (Huang
29 et al., 2021).

30 To account for all the features that can impact water availability and, thus, the WSI on a long-
31 term basis, there are mathematical tools that can be modified to account for and display
32 water balance results in future projections. Spatial distributed hydrological models can give
33 relevant insights regarding the water availability in river basins (Brêda et al., 2020; Quedi and
34 Fan, 2020). The fact that hydrological models account for many natural hydrological
35 processes such as precipitation, evapotranspiration, infiltration, routing, and storage,
36 combined with the flexibility to account for water consumption and withdrawal, turn these

1 tools as turning points to account for water availability in long-term projections (Gaelen et al.,
2 2017; Guug et al., 2020; Jiang et al., 2022). Despite the modeling robustness and capability,
3 only a few studies regarding water scarcity use hydrologic models. Nevertheless, these
4 studies focus on large-scale river basins neglecting local changes in first-order catchments,
5 which are important to correctly account for water availability in river basins (Degefu et al.,
6 2019; Liu et al., 2021; Munia et al., 2020).

7 Water availability is complex to describe considering the many features involved in its
8 accountability. The complexity has a larger scale when it is analyzed in environments (or
9 basins) with many uses, which is the case of the Legal Amazon. Created in 1953, the legal
10 amazon is a geopolitical instrument to include the northern Brazilian territory in the country's
11 socioeconomic structure. The Legal Amazon has a heterogeneity of economic activities,
12 which all rely upon water availability. The main economic sectors observed in its composition
13 are agricultural, forestry, mineral, industrial, and urban activities (Tanure et al., 2020). In the
14 eastern portion of the Legal Amazon, there is a deforestation territory known as the arc of
15 deforestation. Its importance to the biome is unaccountable and has been the subject of
16 many studies emphasizing climate change and water regulation (Cavalcante et al., 2022,
17 2019; Pinheiro et al., 2022). In addition, the eastern legal amazon is accountable for Brazil's
18 most important mining site (Pontes et al., 2022). It is also a key logistic pathway for Brazil
19 since it contains the Carajás Railway and the Ponta da Madeira maritime terminal (Xavier et
20 al., 2021).

21 Evaluating the water scarcity index in a heterogeneous region such as the eastern legal
22 amazon is challenging since there are still multiple research initiatives to understand the
23 water dynamics and the role of climate change over the region. An even more complex
24 analysis is performed to evaluate those indexes for local management scales. The aim of
25 this article is to evaluate water scarcity indexes in two local river basins of the Eastern Legal
26 Amazon using a spatial distributed hydrological model. The WSI is computed considering
27 even low-order river catchment inside larger river basins. Also, the results considering future
28 projections of water availability are analyzed by verifying the use of projected water
29 consumption vs. withdrawal.

30

31 **2. Study area**

32 **2.1. Itacaiúnas watershed**

33

34 The IRB is located in the Araguaia-Tocantins hydrographic region (Brasil, 2003), and it has
35 a total drainage area of approximately 42,000 km² (Pontes et al., 2019) (Figure 1). The
36 basin's elevation is characterized by a plateau called "Serra de Carajás," with altitudes
37 ranging between 300 and 900 meters above sea level. Adjacent to the Serra dos Carajás,

1 the elevation varies between 80 and 300 meters. The basin is located in the eastern Amazon
2 biome, but about 50% of its native rainforest has been replaced by pasture in the last fifty
3 years (Souza-Filho et al., 2018). The land use is dominated by extensive pasturelands
4 surrounding a mosaic of forest remnants composed of indigenous lands and conservation
5 units (commonly named Mosaic of Carajás - MoC), which occupy 11,700 km², or
6 approximately a quarter of the watershed area.

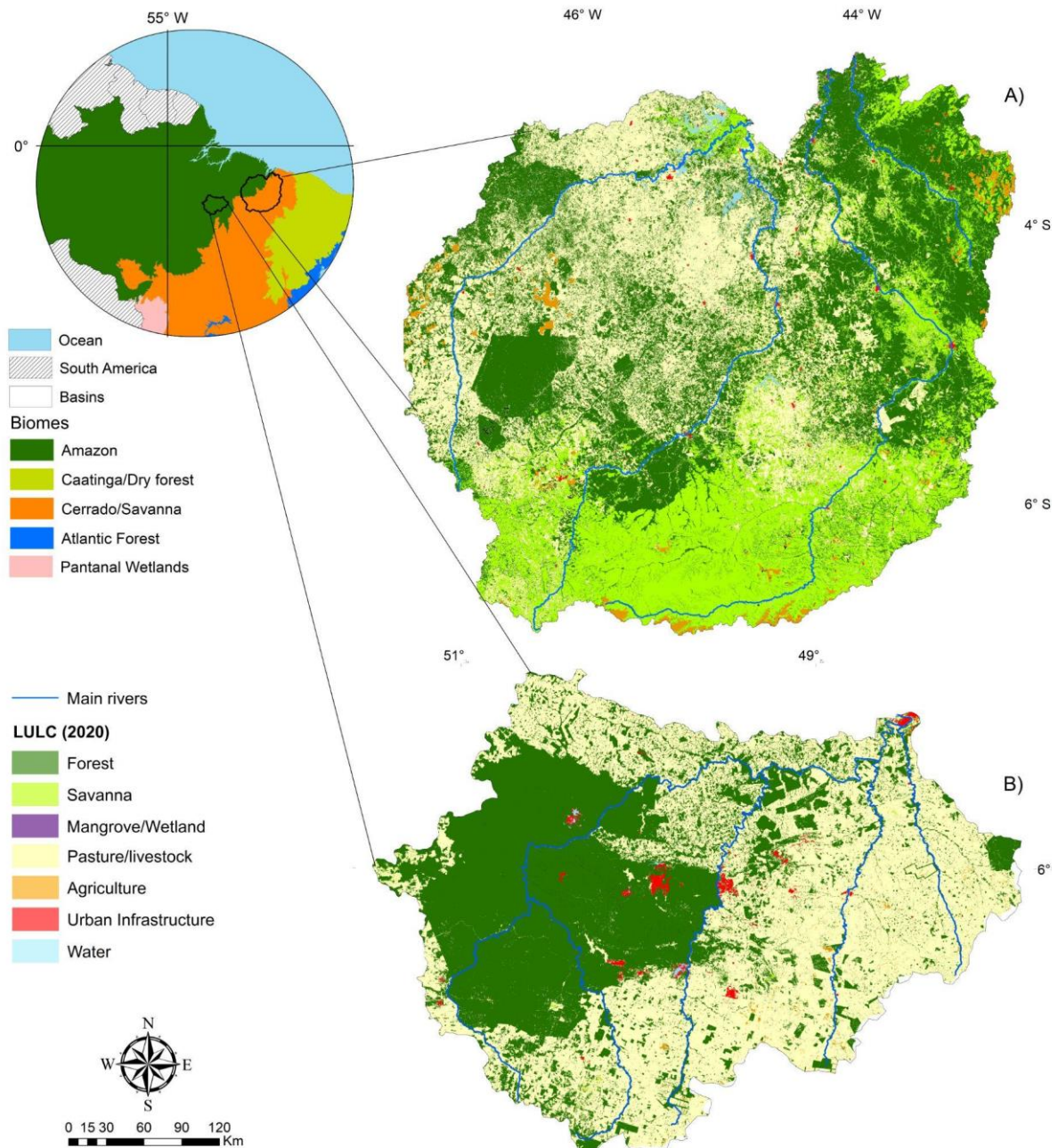
7 The predominant climate class is tropical monsoon (Alvares et al., 2003). The mean air
8 temperature is 27.2°C, and the highest rainfall rates are concentrated between December
9 and April, during the wet season. And the lowest amounts of rain are observed between May
10 and November in the dry season. The seasonality of the IRB water regime is explained by
11 the meteorological systems that act on the basin, mainly during the rainy season, such as
12 the Intertropical Convergence Zone (ITCZ), South Atlantic Convergence Zone (SACZ), in
13 addition to local mesoscale systems due to diurnal convection. Also, the intense
14 deforestation in the last five decades caused an increase in the mean, maximum, and
15 minimum streamflow values (Pontes et al., 2019; Cavalcante et al., 2019).

16 17 **2.2. Pindaré, Mearim, Itacapecurú, and Munim watersheds**

18
19 With a drainage area of 165,199 km², the Pindaré, Mearim, Itapicuru, and Munim basin
20 (PMIMB) is located in the central portion of the state of Maranhão, in northeastern Brazil
21 (Figure 1). The PMIMB region is composed of four large basins, Pindaré (40,663 km²),
22 Mearim (55,788 km²), Itapicuru (52,951 km²), Munim (15,838 km²), and its drainage flows
23 (south-north direction) into the São Marcos and São José Bays, in the Atlantic Ocean. The
24 basin's topography is not very pronounced, ranging from 255 (upstream) to 0 meters
25 (downstream). The PMIMB is inserted in the transition zone between the two largest biomes
26 in Brazil: the Amazon and the Cerrado. It is pressured by the advance of deforestation in the
27 region called the new agricultural frontier of Brazil, the MATOPIBA, an acronym of the states
28 (Maranhão, Tocantins, Piauí, and Bahia) (Silva-Junior et al., 2020; Xavier et al., 2021). About
29 this, we highlight in table x the decadal changes in the main land uses in PMIMB for the last
30 thirty years.

31
32 The predominant climate class is a tropical zone with dry winter (Alvares et al., 2013). The
33 average air temperature is 26°C, and the highest rainfall is concentrated between December
34 and May, during the rainy season. And the lowest volumes of rain are observed between
35 June and November in the dry season. The seasonality of the water regime of the PMIMB is
36 explained by the meteorological systems that act over the basin, especially during the wet

1 season, such as the Intertropical Convergence Zone (ITCZ), the Upper Tropospheric
 2 Cyclonic Vortex (UTCV), and the Mesoscale Convective Systems (MCS) (Lyra et al., 2022).
 3
 4 *Figure. 1. Location and Land Use for the A) PMIMB and B) IRB basins for the year 2020*
 5 *according to the data in table 1.*



6
 7
 8
 9
 10

Table 1 presents the location, population, area, elevation, climate, hydrological features, land use, and land cover changes in the IRB and PMIMB.

1 *Table 1. Location, population, area, elevation, climate, hydrological features, and land use*
 2 *and land cover (2020 year) for the IRB and PMIMB.*

Characteristic		IRB	PMIMB
Location		Pará state, the northern region of Brazil	Maranhão state, the northeastern region of Brazil
Population		700,000 hab	4,340.803 hab
Area		42,000 km ²	165,200 km ²
Elevation		80 to 900 m	0 to 255 m
Biome		Amazon	Amazon and Cerrado
Köppen's climate type ¹		Tropical monsoon	Tropical with dry winter
Precipitation	Mean annual	1900 mm	1543 mm
	Wet season	1600 mm	1360 mm
	Dry season	100 mm	183 mm
Streamflow	Mean annual	900 m ³ /s	1,255 m ³ /s
Land use, land cover class in 2020	Forest	45.1 %	43.5 %
	Agriculture	0.41 %	4.7 %
	Pasture/livestock	53.1 %	30.3 %
	Mining/industry	0.46 %	0.01 %
	Urban	0.29 %	0.23 %

3 According to Alvares et al. (2003); Souza et al. (2020).

4

1 3. Methods

2

3 3.1. *Water scarcity index and use scenarios*

4

5 The water scarcity index (WSI) is calculated by the accumulated water use and availability
6 ratio at the point assessed. The degrees of water scarcity criticality used in this study are
7 based on earlier studies (Smakhtin et al., 2004): $WSI \leq 0.2$ (very low water stress);
8 $0.2 < WSI \leq 0.4$ (low water stress); $0.4 \leq WSI < 0.6$ (moderate water stress); $0.6 \leq WSI < 0.8$
9 (high water stress); $0.8 \leq WSI \leq 1$ (very high water stress).

10 The surface water availability is a minimum reference flow for management purposes and
11 represents the water supply to be considered in the water balance. In Brazil, each state has
12 adopted criteria for establishing the reference flow used to define the maximum flow subject
13 to the right of water use. In this study, water availability is considered as the discharge
14 exceeded or equaled 90% of the time (Q90).

15 Despite the simple definition of WSI, these estimates have some uncertainty, such as the
16 water quantity used by users and the limitation of water availability imposed by the law. This
17 study proposes two scenarios for water scarcity assessment to represent these uncertainties.
18 The first scenario (Restrict) implies that water use is the consumption, and the legal water
19 availability limits its value at the analyzed site. In the second scenario (Unrestricted),
20 Withdrawal is considered for water use and is not limited by legal water availability. Restricted
21 and Unrestricted scenarios are assessed in two periods: reference and future.

22 The reference period uses water use estimates for 2020 and Q90 estimated with data from
23 1971 to 2001. In the second period, water use is estimated for 2040, and Q90 is calculated
24 using discharges from 2021 to 2050.

25

26 3.2. *Water availability*

27

28 The discharges were estimated by MGB hydrologic model in each unit-catchment, in which
29 the basins were divided. The MGB is a mathematical model that simulates several
30 hydrological processes at the unit catchment scale, such as evapotranspiration (canopy and
31 soil), surface, subsurface, water under the surface, and discharges. The MGB
32 (COLLISCHONN et al., 2007; Pontes et al., 2017) has been used in several studies in South

1 America (Siqueira et al., 2018) and worldwide (Fleischmann et al., 2018). In this study, the
 2 water availability is considered the Q90 flow.

3 The pre-processing phase is the first step to simulate the hydrological processes in the basin.
 4 An algorithm separates the watershed into unit catchments, delimited according to the digital
 5 elevation model (DEM). A set of topological characteristics for each unit-catchment is
 6 obtained, including geometrical river features (width, depth, and length), Manning roughness
 7 coefficients, drainage area, flooded area estimations, climate data, and percentage of land
 8 use/cover and soil type (hydrological response units-HRUs). The data used are shown in
 9 Table 2.

10 The PMIMB was divided into 2233 unit-catchments, while the IRB was divided into 1246. The
 11 stage–area–volume curve for each of these units from both basins was estimated using the
 12 Shuttle Radar Topography Mission (SRTM) Bare Earth Data (O’Loughlin et al., 2016) and
 13 the HAND model (Nobre et al., 2011).

14

15 *Table 2. The data source used in the hydrological modeling of Itacaiúnas River Basin (IRB)*
 16 *and Pindaré, Mearim, Itapicuru, and Munim basin (PMIMB).*

Data	IRB	PMIMB
DEM	Alos World 3D (Takaku et al., 2016); SRTM Bare Earth Data (O’Loughlin et al., 2016)	Hydrosheds DEM (https://www.hydrosheds.org/); SRTM Bare Earth Data (O’Loughlin et al., 2016)
Soil type	Digital Soil Map of the World (http://www.fao.org/geonetwork)	EMBRAPA (https://www.embrapa.br/solos/sibcs/solos-do-brasil)
Land use and land cover	(Souza-Filho et al., 2018), based on Landsat imagery	MapBiomas (http://mapbiomas.org/).
Vegetation data	(Pontes et al., 2019)	(Faria et al., 2018; OLIVEIRA et al., 2018; Rodrigues et al., 2016; Siqueira et al., 2018)
Precipitation (1971-2001)	Water and Global Change Forcing Data (WFD) (https://esgf-index1.ceda.ac.uk/)	Water and Global Change Forcing Data (WFD) (https://esgf-index1.ceda.ac.uk/)

Temperature (1971-2001)	Climate Research Unit (https://lr1.uea.ac.uk/cru/data)	Climate Research Unit (https://lr1.uea.ac.uk/cru/data)
Precipitation and temperature (2021-2050)	GCM data from: Earth System Grid Federation (https://lr1.uea.ac.uk/cru/data)	GCM data from: Earth System Grid Federation (https://lr1.uea.ac.uk/cru/data)
Wind speed, solar radiation, relative humidity, and air pressure	Climate Research Unit (https://lr1.uea.ac.uk/cru/data)	Climate Research Unit (https://lr1.uea.ac.uk/cru/data)

1

2 The hydrological behavior in the HRUs is described through soil characteristics, land use,
3 and land cover and climate data. The vegetation data includes height, leaf index area,
4 albedo, and superficial resistance.

5 The MGB model simulates the water-energy balance and water budget in each HRU,
6 resulting in streamflow values. These variables are routed to the rivers, described by a
7 rectangular geometry. Cross-sections are represented using geomorphic relationships: $w =$
8 $3 \times (0.91 \times A^{0.476})$ for the IRB and $w = 0.571 \times A^{0.46}$ for the PMIMB, where “w” is the river
9 reach width (m); “A” is the drainage area (m²); $d = 0.547 \times w^{1.146}$ (IRB) and $d = 0.091 \times A^{0.31}$
10 (PMIMB), where “d” is the full depth of the river reach (m). The routing method is a linear
11 reservoir scheme (COLLISCHONN et al., 2007), using a constant Manning’s coefficient of
12 0.025 for the IRB river reaches and 0.03 in the PMIMB.

13 For the reference period (1971-2001), mean climate data (Air temperature, wind speed, solar
14 radiation, relative humidity, and air pressure) were obtained from Climate Research Unit, and
15 daily precipitation was obtained from Water and Global Change Forcing Data (WFD) product.
16 For the future period, only mean air temperature and precipitation were changed accordingly
17 in five GCM models (GFDL-ESM2 M, HADGEM2ES, IPSL-CM5A-LR, MIROC-ESM-CHEM,
18 and NorESM1 m) in the RCP 8.5. The bias correction method (trend-preserving statistical
19 bias correction method based on quantile-mapping functions) used in the GCM projections
20 adjusts the long-term monthly mean of temperature and precipitation. All data have 0.5° ×
21 0.5° of spatial resolution.

22 The MGB simulated the hydrological processes of both basins satisfactorily. For IRB,
23 calibration and validation results were considered satisfactory (Pontes et al., 2019). The MGB
24 was calibrated in the basin outlet (unique parameters set) in this first study. The performance
25 metrics were Nash–Sutcliffe efficiency, Nash–Sutcliffe logarithmic discharges, and long-term

1 relative error values. The calibration was performed in 1987-1989 (the land cover was mainly
2 natural forests) and 1998-2007 (pasture lands replaced 30,000 km² of the native forest).
3 Nash–Sutcliffe efficiency, Nash–Sutcliffe logarithmic discharges, and long-term relative error
4 values were 0.66, 0.70, and 17% (first period) and 0.39, 0.70, and 21% (second period).
5 Later, the same model was compared to observed discharges in eight in-situ stations along
6 the basin and confirmed the model quality to represent the discharges in IRB, even with a
7 unique set of parameters for all unit catchments (Melo et al., 2022). For PMIMB, the MGB
8 was calibrated and validated in four in-situ stations, representing four sub-basins with 75%
9 of the total basin area. Each one owns a unique set of parameters. The mean Nash–Sutcliffe
10 efficiency, Nash–Sutcliffe logarithmic discharges, and long-term relative error values were
11 0.63, 0.61, and 13%, respectively, also indicating that the MGB model represents the
12 discharges satisfactorily in this basin.

13 **3.3. Water withdrawal and consumption data**

14

15 Data on water withdrawal and Consumption (m³/s) were obtained from the Handbook of
16 Consumptive Water Use in Brazil (Brazilian National Water and Sanitation Agency -
17 <https://metadados.snirh.gov.br/>). The water uses are available at the unit catchments
18 estimated by Otto Pfastetter's method codification, named here as Otto basins. The Otto
19 basins used here have rivers larger than 50 km² drainage area. The water uses (Domestic,
20 Industry, Livestock, and Agriculture) were estimated for 2020 and 2040. The information on
21 water use of each otto basin is transferred for each MGB unit catchment using a simple area
22 relationship. It is a crucial step because it allows the estimates of water scarcity, where the
23 discharges are estimated by hydrological modeling.

24

25 **4. Results**

26 **4.1. Water use**

27

28 Figure 2 presents the water withdrawal and consumption for each use and year in the basins.
29 The total water withdrawal estimate in the IRB varies from 11.5 m³/s in 2020 to 21 m³/s in
30 2040. The industry is the primary water use in this basin, followed by livestock, domestic,
31 and agricultural activities. For the PMIMB, the total withdrawal varies from 6.4 m³/s in 2020
32 to 8.2 m³/s in 2040. In this basin, the primary water use is domestic, followed by agriculture,
33 livestock, and industry.

1 On total water consumption, the estimative in IRB is 4.4 m³/s (2020) and 8.1 m³/s (2040). In
 2 the PMIMB, the water consumption varies from 3.6 m³/s to 4.6 m³/s over the years. In both
 3 watersheds, water is used for thermoelectricity, but It was neglected in this study because it
 4 isn't considered a consumptive use of water.

5 There are some interesting spatial patterns in water use in the basins (Figure 3 and Figure
 6 4). The higher industry water use in IRB is mainly located in the Mosaic of Carajás, related
 7 to mining activity. Despite reaching 70% of the total withdrawal for 2020 (76% for 2040), this
 8 economic activity uses around 1% of the MoC area. Still, in the PMIMB, industrial water
 9 withdrawal corresponds only to 3% of total withdrawal, indicating the difference in
 10 industrialization processes in these watersheds. In the IRB, the second water use is livestock,
 11 spread in the basin, except inside the MoC. In the PMIMB, similar to the IRB, livestock water
 12 use is in almost the entire watershed, although being the only third water use.

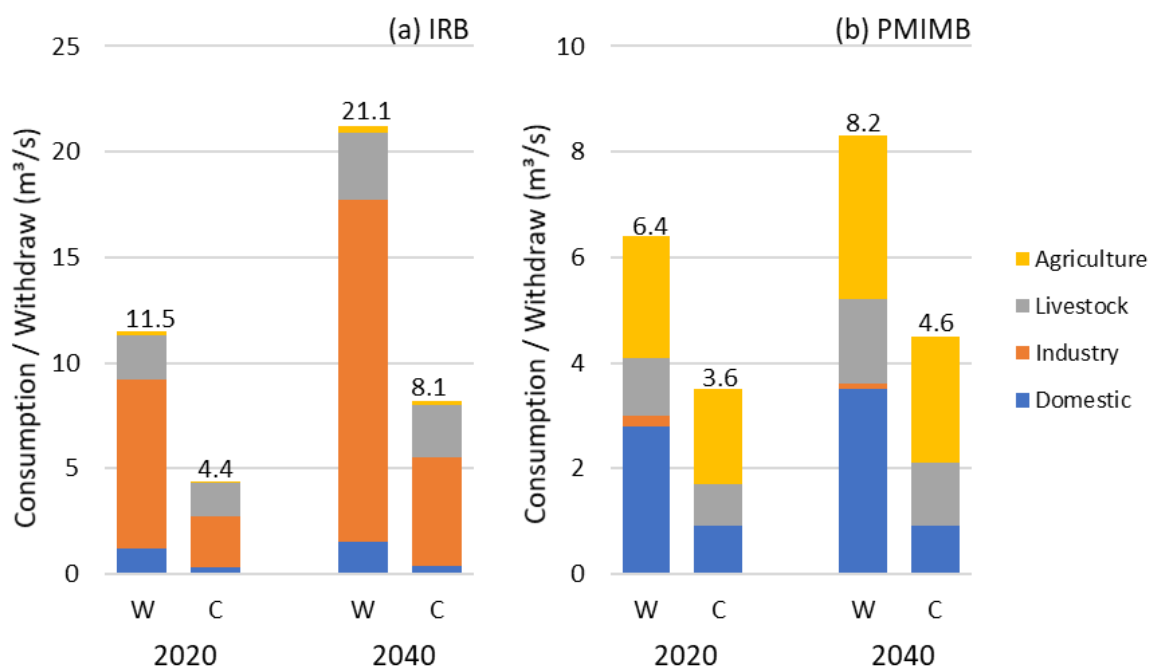
13

14

15

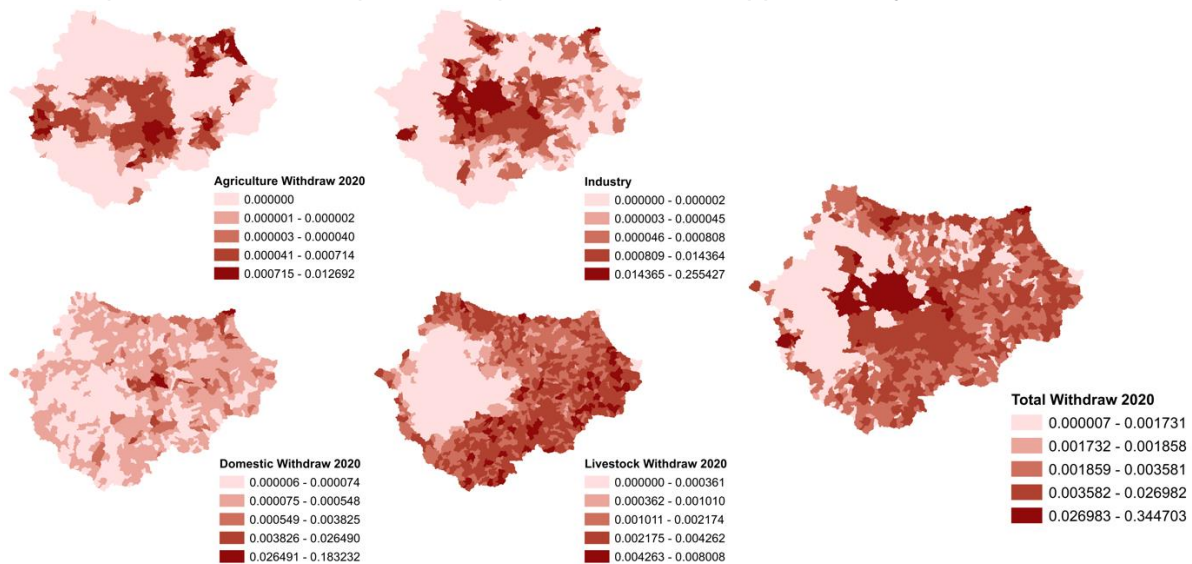
16

17 *Figure 2: Water withdrawal (W) and consumption (C) for each use and year in the basins:*
 18 *(a) IRB; and (b) PMIMB.*

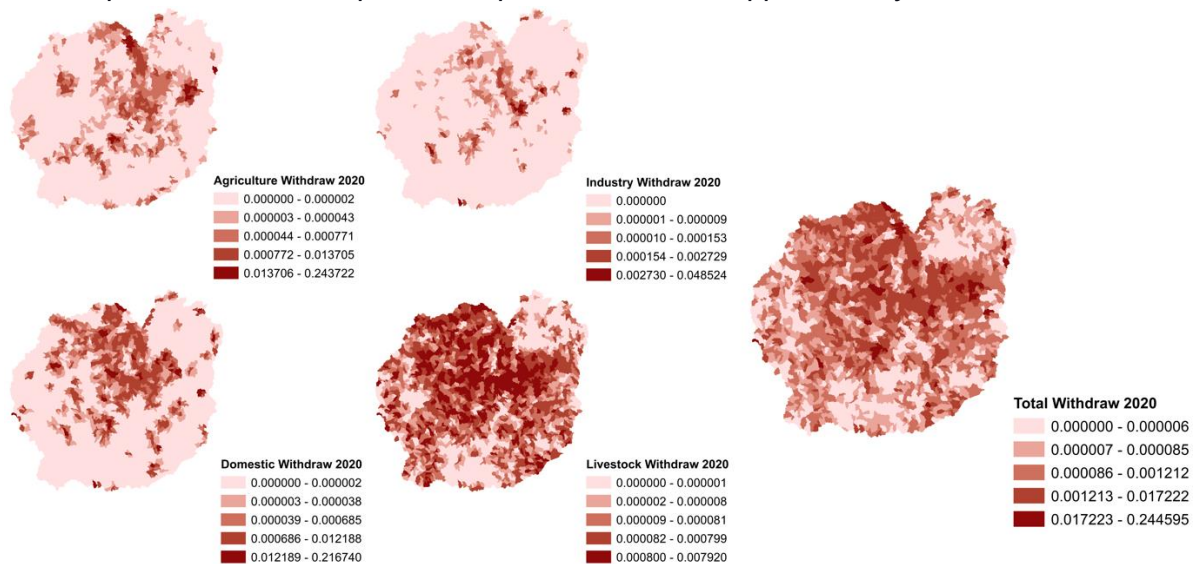


19

1 *Figure 3: IRB's water withdrawal (2020) at unit-catchment scale for each use. Water*
 2 *consumption and the 2040 period are presented in the supplementary file.*



3
 4
 5 *Figure 4: PMIMB's water withdrawal (2020) at unit-catchment scale for each use. Water*
 6 *consumption and the 2040 period are presented in the supplementary file.*



7
 8
 9

10 **4.2. Water availability**

11

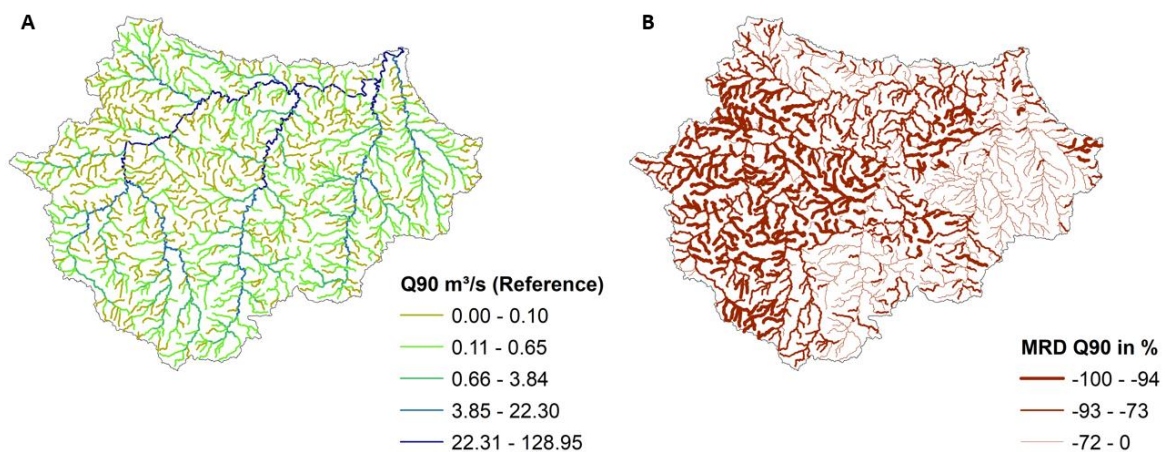
12 The water availability is considered in this study as Q90 flow (90% exceedance flow). For
 13 IRB (Figure 5), Q90 reaches 128 m³/s in the outlet for the reference period. Besides, the
 14 mean Q90 of the unit catchments is only 3.3 m³/s, indicating the high variation of discharges

1 in the basin. Regarding the future period, the Q90 in the outlet decreased to 33.8 m³/s, and
 2 the mean Q90 of the unit catchments declined to 0.8 m³/s.

3 For PMIMB (Figure 6), the Q90 in the reference period reaches 238 m³/s. It corresponds to
 4 the sum of the Pindaré (31 m³/s), Mearim (120 m³/s), Itapicurú (56 m³/s), and Munim (31
 5 m³/s) discharges. In the future period, the Q90 may decrease to 190 m³/s (a reduction of
 6 31%, 14%, 11%, and 51% in each river, respectively, compared to the reference period).
 7 Similar to IRB, the mean discharge at the unit catchment scale is 3.45 m³/s, indicating the
 8 high variability of this variable.

9

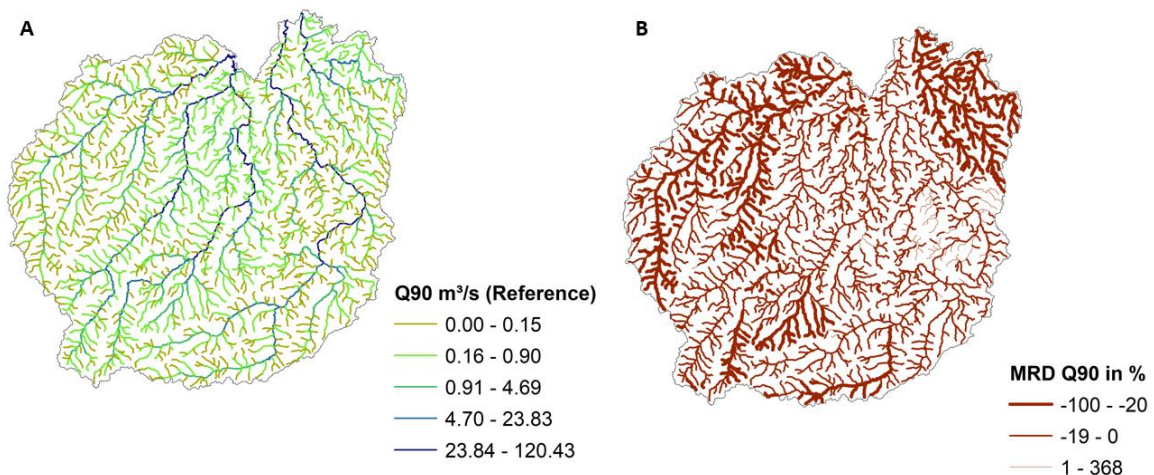
10 *Figure 5: A) Water availability (Q90) in the reference period at the unit-catchment scale for*
 11 *the Itacaiúnas river basin. B) Mean relative difference of Q90 in the future (mean of GCMs)*
 12 *and reference periods.*



13

14

15 *Figure 6: A) Water availability (Q90) in the reference period at the unit-catchment scale for*
 16 *the PMIMB. B) Mean relative difference of Q90 in the future (mean of GCMs) and reference*
 17 *periods.*



18

1

2

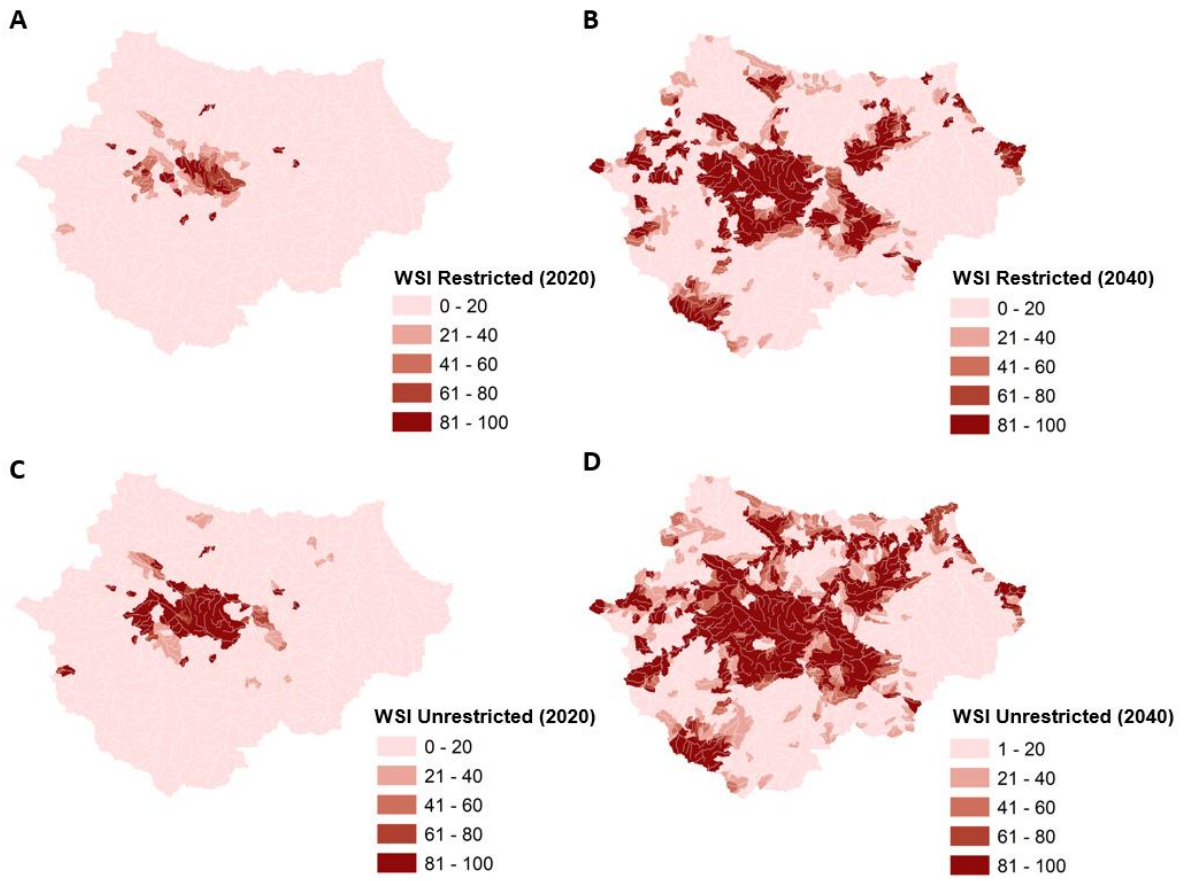
3

4 **4.3. Water scarcity**

5

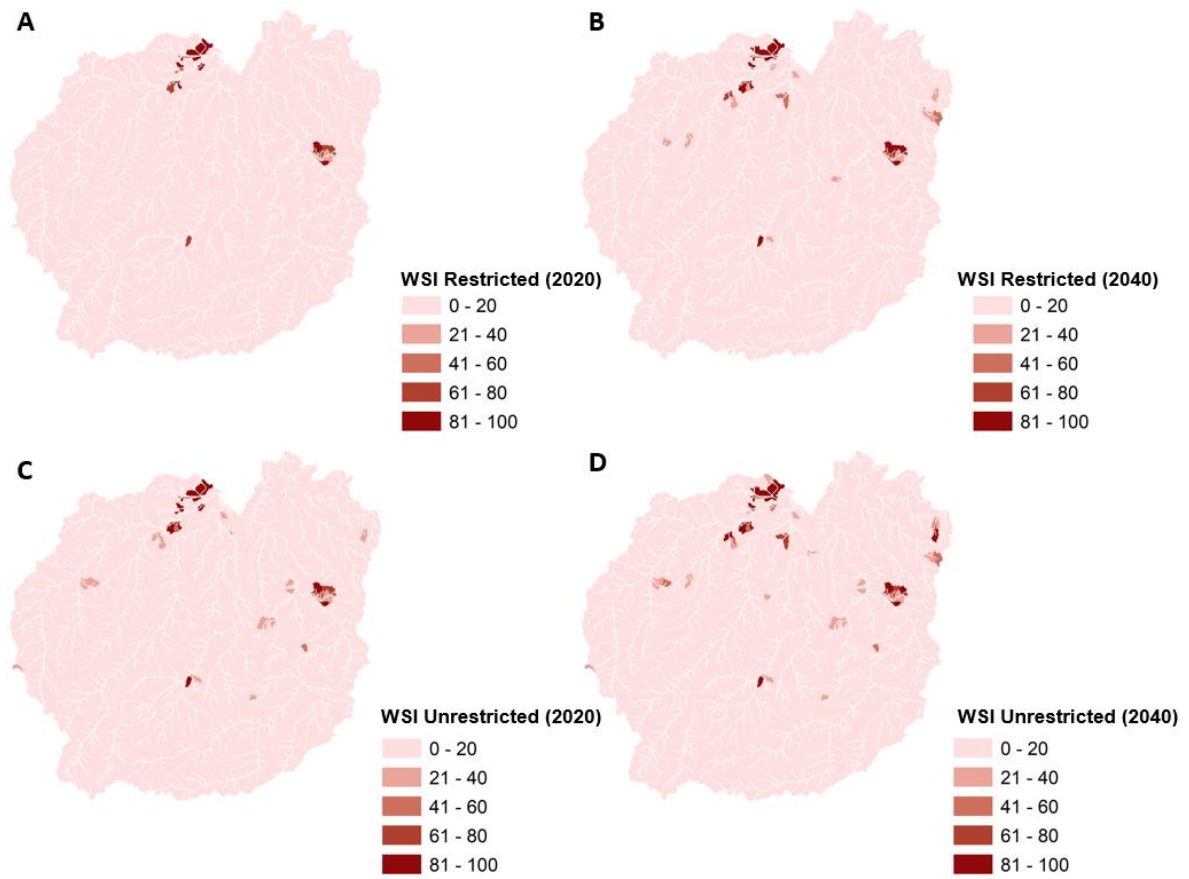
6 The spatial distribution of the WSI in the IRB indicates that the higher values are located
7 mainly inside MoC, probably due to industry water use. Despite this, the WSI values suggest
8 a comfortable situation in this basin. Around 90% (94%) of the unit catchments of IRB have
9 a maximum WSI of 20% in the Unrestricted (Restricted) scenario. The simulation also reveals
10 that 6% (2%) of unit catchments have a WSI upper to 80% in the Unrestricted (Restricted).
11 The WSI can be worse in the future, meaning more unit catchments with a WSI upper of 80%
12 (27.3% for the Unrestricted: 27.3%; Restricted: 18.6%) and fewer with a WSI limited to 20%
13 (54% for the Unrestricted: 68.4%; Restricted: 18.6%), according to Table 3 and Figure 7. This
14 result is evident in the spatial variability, in which worse values of WSI occur spread in the
15 basin. The increase of WSI occurs mainly in the headwater of Itacaiúnas and Aquiri rivers,
16 Paraupebas watershed tributaries, and Lower Itacaiúnas rivers. Table 3 also presents the
17 first-order unit-catchments with WSI higher than 80% in both basins. The WSI condition for
18 PMIMB is quite different from IRB. More than 99% of catchments own WSI between 0-20%
19 in both Unrestricted and Restricted scenarios and periods, which means a more comfortable
20 situation, according to Table 3 and Figure 8.

21 *Figure: WSI values in the IRB for all scenarios and periods.*



1

2 *Figure: WSI values in the PMIMB for all scenarios and periods.*



1
2
3
4
5

Table 3: Number of unit catchments in the IRB and PMIMB in each WSI class for all scenarios (Restricted and Unrestricted) and periods (2020 and 2040) considering all unit catchments and only first-order catchments with WSI higher than 80.

Unit catchments	WSI classes	IRB 2020 (2040)		PMIMB 2020 (2040)	
		Restricted	Unrestricted	Restricted	Unrestricted
All	0% - 20%	1172 (852)	1133 (674)	2210 (2191)	2189 (2174)
	20% - 40%	28 (101)	28 (146)	5 (18)	23 (27)
	40% - 60%	16 (35)	8 (60)	1 (5)	3 (8)
	60% - 80%	8 (25)	7 (26)	6 (1)	3 (4)
	80% - 100%	22 (233)	70 (340)	11 (18)	15 (20)
First order	80% - 100%	19 (157)	36 (165)	2 (5)	4 (5)

6 **5. Discussion**

7

1 **5.1. Difference between global and regional WSI for the watersheds.**

2
3 Several studies presented global WSI estimates (ALCAMO et al., 2007; Degefu et al., 2019;
4 Huggins et al., 2022; Kiguchi et al., 2015; Liu et al., 2021; Munia et al., 2016, 2020; Smakhtin
5 et al., 2004; Veldkamp et al., 2017). Despite the vantage of a global scale, in general, the
6 WSI doesn't represent small-order rivers due to the coarse resolution of water use or water
7 availability. On the water availability data, for instance, earlier studies used a spatial
8 resolution of half-degree, which is satisfactory for transboundary or large basins but may
9 neglect small rivers even in stressed basins (Degefu et al., 2019; Liu et al., 2021; Munia et
10 al., 2020).

11 According to our results, first-order unit-catchments (mean drainage area of 30 km²) with WSI
12 higher than 80% vary from 19 to 36 in the 2020 period. Still, they may reach 165 in the 2040
13 period, indicating the need to represent these small basins. Also, earlier and global scale
14 studies normally presented that there is low water stress (WSI < 0.3) in most parts of Brazilian
15 basins, even in the future assessments (ALCAMO et al., 2007; Smakhtin et al., 2004),
16 contradicting our results, which indicated rivers under high WSI, mainly in IRB. Unlike the
17 IRB, the first-order unit-catchments in PMIMB are limited to 5, supporting that this basin does
18 not experience high levels of water scarcity.

19 On a regional scale, the Brazilian Water and Sanitation Agency studied water security in
20 Brazil. This study considers the same water use data and the Q95, estimated by flow
21 regionalization techniques. The future flows were considered implicitly due to ongoing
22 changes in observed flow data. Despite the similarity of WSI patterns, considering climate
23 projections by GCMs is important to understand the possible critical future scenarios, even
24 though it is challenging to implement in immediate water planning. Also, even with
25 uncertainties related to these projections, the GCM data as input for hydrological models are
26 widely used in literature (ALCAMO et al., 2007; Arnell, 2004; Dinar et al., 2019; Kiguchi et
27 al., 2015; Liu et al., 2022; Munia et al., 2020). In the IRB, for instance, the mean Q90
28 estimated using the five GCMs indicates a reduction of 95 m³/s compared to the reference
29 period in the watershed outlet, confirming the importance of these projections (Pontes et al.,
30 2022). The results showed that future Q90 decreased 100% compared to the reference
31 period, mainly in the rivers of Mosaic of Carajás, where water use is more intense.

1 **5.2. Uncertainties in WSI estimates**

2 The use of water withdrawal or water consumption in the WSI estimates may cause essential
3 changes in this index. (Liu et al., 2021; Munia et al., 2020). A recent study indicates that
4 choosing withdrawal or consumption in the WSI estimates changed the estimate of the
5 population living in water-stressed areas (Munia et al., 2020). Our study indirectly evaluates
6 the influence of the withdrawal or consumption in WSI estimates in the scenarios, which can
7 be noted in the number of unit catchments distributed by the WSI classes (Table X). In the
8 IRB, for instance, the number of unit catchments with WSI > 80% is 22 (Restricted) and 70
9 (Unrestricted) in the 2020 period. These numbers represent 2% and 6% of the unit
10 catchments of IRB, and the difference between the scenarios occurs mainly in the MoC, in
11 small drainage areas with industrial use. Nevertheless, local water use significantly
12 influences WSI estimates compared to upstream water use (Munia et al., 2020). Although
13 water consumption is more faithful to reality than water withdrawal, the amount of water that
14 is returned to the rivers may not be guaranteed for downstream uses due to other factors,
15 such as pollution sources (Wada et al., 2011). Regarding PMIMB, the basin has 11
16 (Restricted) and 15 (Unrestricted), but the difference is more spatially noticeable in the IRB.

17 Another uncertainty concerns the water use (consumption or withdrawal) limited to Q90 (or
18 other reference discharge used as water availability). For instance, the water withdrawal in a
19 river can not exceed the Q90, but it can occur in practice due to the lack of water oversight.
20 This uncertainty also is implicitly considered in our study in the Unrestricted scenario. In the
21 IRB, the total water consumption in 2020 (2040) was 4.4 m³/s (8 m³/s), but the value
22 considered in the WSI estimate is 89% (54%) of this total. This occurs because there are
23 river reaches that have less Q90 than water consumption. It is important to mention that
24 water use higher than environmental discharge may impact aquatic ecosystem services,
25 such as fishery, recreation, and flood controls (Smakhtin et al., 2004).

26 There are other sources of uncertainties not considered in this study, such as the equations
27 to estimate environmental flow (and consequently water availability) (Liu et al., 2021; Pastor
28 et al., 2014) and water scarcity (Liu et al., 2017). A recent study evaluated how different
29 environmental flow estimates (Q90, Q50, Q90/Q50, and Variable Monthly Flows - VMF
30 method) could impact the population under water scarcity (Liu et al., 2021). The authors
31 showed that the area under water scarcity ranged between 8% and 52% of the global land
32 area, which means 28% to 60% of the global population living under water scarcity. In Brazil,
33 water availability and environmental flows vary from state to state, and it is a function of the
34 minimum flow (Q90, Q80, Q95, 7Q10) of the evaluated period. For instance, the water
35 availability in a state can be 90% of Q90, which means that only 10% is reserved for the

1 environment. Some studies indicate that the discharge required by a river to maintain its
2 aquatic ecosystem services must be variable over time, considering the anthropic and natural
3 changes (POFF et al., 2010; RICHTER et al., 1997; Richter, 2010). But these studies also
4 indicate the difficulty of implementing the methods due to the lack of understanding about
5 environmental flow benefits, water management difficulties, and the complexity of the
6 proposed methods. Another limitation of our study is the use of only one index of water
7 scarcity.

8

9 **5.3. Future changes implications**

10

11 Climate changes may impact water resources in different ways, such as increasing high flows
12 and decreasing water availability (Alves et al., 2021; Brechin and Bhandari, 2011). Although
13 the GCMs usually agree with the signal of future precipitation and air temperature changes,
14 they have different results about the intensity (Brêda et al., 2020; Schewe et al., 2014). The
15 uncertainties in climate variables reinforce the importance of using several GCMs to improve
16 the results' goodness and magnitude of changes (Alfredo et al., 2016; Brêda et al., 2020). In
17 IRB, climate changes (2021-2050) indicate a decrease in precipitation and an increase in air
18 temperature, which means a reduction in water availability of 70% compared to the reference
19 period (1971-2001) (Pontes et al., 2022). The highest differences in water availability can
20 occur in the MoC region (Figure 5). Regarding PMIMB, most parts of the basin may
21 experience a decrease in water availability, but others may experience an increase.
22 Considering the sum of all outlets, the reduction in water availability is 20%. Despite the
23 changes simulated by GCMs, decision-makers must not consider climate change as
24 forecasts. In IRB, for instance, a recent study indicates a decrease in precipitation in the last
25 40 years, but it is not significant (Cavalcante et al., 2019). The authors showed that
26 deforestation is mainly responsible for the basin's flow increase. In addition to climate, water
27 use and population changes may threaten water security in watersheds (Draper and Kundell,
28 2007; Munia et al., 2020; Schewe et al., 2014).

29

30 **6. Conclusion**

31

32 We evaluated water scarcity, represented as WSI, using hydrological modeling and water
33 use estimates (consumption and withdrawal) in Legal Amazon watersheds in Pará and
34 Maranhão states.

1 The hydrological model used in this study – MGB – was considered well-adjusted for both
2 regions and allowed water availability estimates in the basins, including first-order rivers,
3 where water users usually exist in critical, such as industry. Also, because the model
4 estimates water availability spatially, the WSI was calculated for more diffuse water use, such
5 as livestock.

6 In the WSI estimates, our study also considered uncertainties related to water consumption
7 or withdrawal and the water use limited to legal water availability. These uncertainties were
8 evaluated in both scenarios (Restricted and Unrestricted). In general, WSI is less than 20%
9 in most parts of unit-catchments of IRB and PMIMB, indicating a safe water situation. It is
10 more evident in PMIMB, where the primary water use is agriculture and domestic. However,
11 first-order unit-catchments in IRB need more attention due to WSI that surpasses 80%. High
12 WSI values in first-order unit-catchments may compromise downstream water uses. The WSI
13 was also estimated in future scenarios, considering projections of water availability and use.
14 Although our results indicated a reduction in water availability in IRB and part of PMIMB, the
15 watersheds can be considered safe regarding water security.

16 For a better uncertainties assessment, it is recommended in the subsequent studies to use
17 more than one water scarcity approach, which may change the understanding of areas with
18 more water-related risks. Also, it is recommended to use updated climate projections, which
19 have been improved over the years. Finally, we agree that the results improve water
20 management in the basin and allow identify and evaluate how water-related risks can impact
21 these watersheds.

22

23 7. References

24

25 ALCAMO, J., FLÖRKE, M., MÄRKER, M., 2007. Future long-term changes in global water
26 resources driven by socio-economic and climatic changes. *Hydrological Sci J* 52, 247–275.
27 <https://doi.org/10.1623/hysj.52.2.247>

28 Alfredo, R.N., Adriano, R. da P., José, A.M., Sin, C.C., 2016. Hydrological Processes and
29 Climate Change in Hydrographic Regions of Brazil. *J Water Resour Prot* 08, 1103–1127.
30 <https://doi.org/10.4236/jwarp.2016.812087>

31 Alves, L.M., Chadwick, R., Moise, A., Brown, J., Marengo, J.A., 2021. Assessment of
32 rainfall variability and future change in Brazil across multiple timescales. *Int. J. Climatol.* 41,
33 E1875–E1888. <https://doi.org/10.1002/joc.6818>

34 Arnell, N.W., 2004. Climate change and global water resources: SRES emissions and
35 socio-economic scenarios. *Global Environ Change* 14, 31–52.
36 <https://doi.org/10.1016/j.gloenvcha.2003.10.006>

37 Brechin, S.R., Bhandari, M., 2011. Perceptions of climate change worldwide. *Wiley*
38 *Interdiscip Rev Clim Change* 2, 871–885. <https://doi.org/10.1002/wcc.146>

1 Brêda, J.P.L.F., Paiva, R.C.D. de, Collischon, W., Bravo, J.M., Siqueira, V.A., Steinke,
2 E.B., 2020. Climate change impacts on South American water balance from a continental-
3 scale hydrological model driven by CMIP5 projections. *Climatic Change* 159, 503–522.
4 <https://doi.org/10.1007/s10584-020-02667-9>

5 Castro, A.L. de A., Andrade, E.P., Costa, M. de A., Santos, T. de L., Ugaya, C.M.L.,
6 Figueirêdo, M.C.B. de, 2018. Applicability and relevance of water scarcity models at local
7 management scales: Review of models and recommendations for Brazil. *Environ Impact*
8 *Asses* 72, 126–136. <https://doi.org/10.1016/j.eiar.2018.05.004>

9 Cavalcante, R.B.L., Nunes, S., Viademonte, S., Rodrigues, C.M.F., Gomes, W.C., Ferreira,
10 J. da S., Pontes, P.R.M., Giannini, T.C., Awade, M., Miranda, L. de S., Nascimento, W.R.,
11 2022. Multicriteria approach to prioritize forest restoration areas for biodiversity
12 conservation in the eastern Amazon. *J Environ Manage* 318, 115590.
13 <https://doi.org/10.1016/j.jenvman.2022.115590>

14 Cavalcante, R.B.L., Pontes, P.R.M., Souza-Filho, P.W.M., Souza, E.B., 2019. Opposite
15 Effects of Climate and Land Use Changes on the Annual Water Balance in the Amazon Arc
16 of Deforestation. *Water Resour Res* 55, 3092–3106. <https://doi.org/10.1029/2019wr025083>

17 COLLISCHONN, W., ALLASIA, D., SILVA, B.C.D., TUCCI, C.E.M., 2007. The MGB-IPH
18 model for large-scale rainfall—runoff modelling. *Hydrological Sci J* 52, 878–895.
19 <https://doi.org/10.1623/hysj.52.5.878>

20 Degefu, D.M., Liao, Z., He, W., Yuan, L., An, M., Zhang, Z., Xia, W., 2019. The Impact of
21 Upstream Sub-basins' Water Use on Middle Stream and Downstream Sub-basins' Water
22 Security at Country-Basin Unit Spatial Scale and Monthly Temporal Resolution. *Int J*
23 *Environ Res Pu* 16, 450. <https://doi.org/10.3390/ijerph16030450>

24 Dehghani, S., Bavani, A.R.M., Roozbahani, A., Gohari, A., Berndtsson, R., 2022. Towards
25 an integrated system modeling of water scarcity with projected changes in climate and
26 socioeconomic conditions. *Sustain Prod Consum* 33, 543–556.
27 <https://doi.org/10.1016/j.spc.2022.07.023>

28 Dinar, A., Tieu, A., Huynh, H., 2019. Water scarcity impacts on global food production.
29 *Global Food Secur* 23, 212–226. <https://doi.org/10.1016/j.gfs.2019.07.007>

30 Draper, S.E., Kundell, J.E., 2007. Impact of Climate Change on Transboundary Water
31 Sharing. *J Water Res Plan Man* 133, 405–415. [https://doi.org/10.1061/\(asce\)0733-9496\(2007\)133:5\(405\)](https://doi.org/10.1061/(asce)0733-9496(2007)133:5(405))

32

33 Faria, T. de O., Rodrigues, T.R., Curado, L.F.A., Gaio, D.C., Nogueira, J. de S., 2018.
34 Surface albedo in different land-use and cover types in Amazon forest region. *Revista*
35 *Ambiente Água* 13, e2120. <https://doi.org/10.4136/ambi-agua.2120>

36 Fleischmann, A., Siqueira, V., Paris, A., Collischonn, W., Paiva, R., Pontes, P., Crétaux, J.-
37 F., Bergé-Nguyen, M., Biancamaria, S., Gosset, M., Calmant, S., Tanimoun, B., 2018.
38 Modelling hydrologic and hydrodynamic processes in basins with large semi-arid wetlands.
39 *J Hydrol* 561, 943–959. <https://doi.org/10.1016/j.jhydrol.2018.04.041>

40 Gaelen, H.V., Vanuytrecht, E., Willems, P., Diels, J., Raes, D., 2017. Bridging rigorous
41 assessment of water availability from field to catchment scale with a parsimonious agro-
42 hydrological model. *Environ Modell Softw* 94, 140–156.
43 <https://doi.org/10.1016/j.envsoft.2017.02.014>

44 Guug, S.S., Abdul-Ganiyu, S., Kasei, R.A., 2020. Application of SWAT hydrological model
45 for assessing water availability at the Sherigu catchment of Ghana and Southern Burkina
46 Faso. *Hydroresearch* 3, 124–133. <https://doi.org/10.1016/j.hydres.2020.10.002>

47 Huang, Z., Yuan, X., Liu, X., 2021. The key drivers for the changes in global water scarcity:
48 Water withdrawal versus water availability. *J Hydrol* 601, 126658.

1 <https://doi.org/10.1016/j.jhydrol.2021.126658>
2 Huggins, X., Gleeson, T., Kummu, M., Zipper, S.C., Wada, Y., Troy, T.J., Famiglietti, J.S.,
3 2022. Hotspots for social and ecological impacts from freshwater stress and storage loss.
4 *Nat Commun* 13, 439. <https://doi.org/10.1038/s41467-022-28029-w>
5 Jiang, C., Parteli, E.J.R., Xia, Q., Yin, X., Shao, Y., 2022. A regional hydrological model for
6 arid and semi-arid river basins with consideration of irrigation. *Environ Modell Softw* 157,
7 105531. <https://doi.org/10.1016/j.envsoft.2022.105531>
8 Kiguchi, M., Shen, Y., Kanae, S., Oki, T., 2015. Re-evaluation of future water stress due to
9 socio-economic and climate factors under a warming climate. *Hydrological Sci J* 60, 14–29.
10 <https://doi.org/10.1080/02626667.2014.888067>
11 Liu, J., Liu, Q., Yang, H., 2016. Assessing water scarcity by simultaneously considering
12 environmental flow requirements, water quantity, and water quality. *Ecol Indic* 60, 434–441.
13 <https://doi.org/10.1016/j.ecolind.2015.07.019>
14 Liu, J., Yang, H., Gosling, S.N., Kummu, M., Flörke, M., Pfister, S., Hanasaki, N., Wada, Y.,
15 Zhang, X., Zheng, C., Alcamo, J., Oki, T., 2017. Water scarcity assessments in the past,
16 present, and future. *Earth's Futur* 5, 545–559. <https://doi.org/10.1002/2016ef000518>
17 Liu, X., Liu, W., Liu, L., Tang, Q., Liu, J., Yang, H., 2021. Environmental flow requirements
18 largely reshape global surface water scarcity assessment. *Environ Res Lett* 16, 104029.
19 <https://doi.org/10.1088/1748-9326/ac27cb>
20 Liu, X., Liu, W., Tang, Q., Liu, B., Wada, Y., Yang, H., 2022. Global Agricultural Water
21 Scarcity Assessment Incorporating Blue and Green Water Availability Under Future Climate
22 Change. *Earth's Futur* 10. <https://doi.org/10.1029/2021ef002567>
23 Lyra, M.J.A., Fedorova, N., Levit, V., 2022. Mesoscale convective complexes over
24 northeastern Brazil. *J S Am Earth Sci* 118, 103911.
25 <https://doi.org/10.1016/j.jsames.2022.103911>
26 Melo, A.M.Q. de, Blanco, C.J.C., Pontes, P.R.M., Cavalcante, R.B.L., Silva-Júnior, R.O. da,
27 Silva, M.S. da, 2022. Elaborating rating curves for implementation of the MGB hydrological
28 model in a river basin, Amazon region, Brazil. *Sustain Water Resour Management* 8, 132.
29 <https://doi.org/10.1007/s40899-022-00715-z>
30 Millington, N., 2018. Producing water scarcity in São Paulo, Brazil: The 2014-2015 water
31 crisis and the binding politics of infrastructure. *Polit Geogr* 65, 26–34.
32 <https://doi.org/10.1016/j.polgeo.2018.04.007>
33 Munia, H., Guillaume, J.H.A., Mirumachi, N., Porkka, M., Wada, Y., Kummu, M., 2016.
34 Water stress in global transboundary river basins: significance of upstream water use on
35 downstream stress. *Environ Res Lett* 11, 014002. <https://doi.org/10.1088/1748-9326/11/1/014002>
36
37 Munia, H.A., Guillaume, J.H.A., Wada, Y., Veldkamp, T., Virkki, V., Kummu, M., 2020.
38 Future Transboundary Water Stress and Its Drivers Under Climate Change: A Global
39 Study. *Earth's Futur* 8, e2019EF001321. <https://doi.org/10.1029/2019ef001321>
40 Nobre, A.D., Cuartas, L.A., Hodnett, M., Rennó, C.D., Rodrigues, G., Silveira, A., Waterloo,
41 M., Saleska, S., 2011. Height Above the Nearest Drainage – a hydrologically relevant new
42 terrain model. *J Hydrol* 404, 13–29. <https://doi.org/10.1016/j.jhydrol.2011.03.051>
43 OLIVEIRA, R.F. de, ZOLIN, C.A., VICTORIA, D. de C., LOPES, T.R., VENDRUSCULO,
44 L.G., PAULINO, J., 2018. Hydrological calibration and validation of the MGB-IPH model for
45 water resource management in the upper Teles Pires River basin in the Amazon-Cerrado
46 ecotone in Brazil. *Acta Amazon* 49, 54–63. <https://doi.org/10.1590/1809-4392201800812>
47 O'Loughlin, F.E., Paiva, R.C.D., Durand, M., Alsdorf, D.E., Bates, P.D., 2016. A multi-
48 sensor approach towards a global vegetation corrected SRTM DEM product. *Remote Sens*

1 Environ 182, 49–59. <https://doi.org/10.1016/j.rse.2016.04.018>

2 Pastor, A.V., Ludwig, F., Biemans, H., Hoff, H., Kabat, P., 2014. Accounting for
3 environmental flow requirements in global water assessments. *Hydrol Earth Syst Sc* 18,
4 5041–5059. <https://doi.org/10.5194/hess-18-5041-2014>

5 Pinheiro, C. di P. da S., Silva, L.C., Matlaba, V.J., Giannini, T.C., 2022. Agribusiness and
6 environmental conservation in tropical forests in the eastern Amazon. *Sustain Prod*
7 *Consum* 33, 863–874. <https://doi.org/10.1016/j.spc.2022.08.015>

8 POFF, N.L., RICHTER, B.D., ARTHINGTON, A.H., BUNN, S.E., NAIMAN, R.J., KENDY,
9 E., ACREMAN, M., APSE, C., BLEDSOE, B.P., FREEMAN, M.C., HENRIKSEN, J.,
10 JACOBSON, R.B., KENNEN, J.G., MERRITT, D.M., O'KEEFFE, J.H., OLDEN, J.D.,
11 ROGERS, K., THARME, R.E., WARNER, A., 2010. The ecological limits of hydrologic
12 alteration (ELOHA): a new framework for developing regional environmental flow
13 standards. *Freshwater Biol* 55, 147–170. <https://doi.org/10.1111/j.1365-2427.2009.02204.x>

14 Pontes, P.R.M., Cavalcante, R.B.L., Giannini, T.C., Costa, C.P.W., Tedeschi, R.G., Melo,
15 A.M.Q., Xavier, A.C.F., 2022. Effects of Climate Change on Hydrology in the Most Relevant
16 Mining Basin in the Eastern Legal Amazon. *Water-sui* 14, 1416.
17 <https://doi.org/10.3390/w14091416>

18 Pontes, P.R.M., Cavalcante, R.B.L., Sahoo, P.K., Júnior, R.O. da S., Silva, M.S. da,
19 Dall'Agnol, R., Siqueira, J.O., 2019. The role of protected and deforested areas in the
20 hydrological processes of Itacaiúnas River Basin, eastern Amazonia. *J Environ Manage*
21 235, 489–499. <https://doi.org/10.1016/j.jenvman.2019.01.090>

22 Pontes, P.R.M., Fan, F.M., Fleischmann, A.S., Paiva, R.C.D. de, Buarque, D.C., Siqueira,
23 V.A., Jardim, P.F., Sorribas, M.V., Collischonn, W., 2017. MGB-IPH model for hydrological
24 and hydraulic simulation of large floodplain river systems coupled with open source GIS.
25 *Environ Modell Softw* 94, 1–20. <https://doi.org/10.1016/j.envsoft.2017.03.029>

26 Quedi, E.S., Fan, F.M., 2020. Sub seasonal streamflow forecast assessment at large-scale
27 basins. *J Hydrol* 584, 124635. <https://doi.org/10.1016/j.jhydrol.2020.124635>

28 RICHTER, B., BAUMGARTNER, J., WIGINGTON, R., BRAUN, D., 1997. How much water
29 does a river need? *Freshwater Biol* 37, 231–249. [https://doi.org/10.1046/j.1365-](https://doi.org/10.1046/j.1365-2427.1997.00153.x)
30 [2427.1997.00153.x](https://doi.org/10.1046/j.1365-2427.1997.00153.x)

31 Richter, B.D., 2010. Re-thinking environmental flows: from allocations and reserves to
32 sustainability boundaries. *River Res Applic* 26, 1052–1063. <https://doi.org/10.1002/rra.1320>

33 Rodrigues, T.R., Vourlitis, G.L., Lobo, F. de A., Santanna, F.B., Arruda, P.H.Z. de,
34 Nogueira, J. de S., 2016. Modeling canopy conductance under contrasting seasonal
35 conditions for a tropical savanna ecosystem of south central Mato Grosso, Brazil. *Agr*
36 *Forest Meteorol* 218, 218–229. <https://doi.org/10.1016/j.agrformet.2015.12.060>

37 Sathler, D., 2021. Understanding human development, poverty and water scarcity patterns
38 in the Brazilian Semi-arid through cluster analysis. *Environ Sci Policy* 125, 167–178.
39 <https://doi.org/10.1016/j.envsci.2021.09.004>

40 Schewe, J., Heinke, J., Gerten, D., Haddeland, I., Arnell, N.W., Clark, D.B., Dankers, R.,
41 Eisner, S., Fekete, B.M., Colón-González, F.J., Gosling, S.N., Kim, H., Liu, X., Masaki, Y.,
42 Portmann, F.T., Satoh, Y., Stacke, T., Tang, Q., Wada, Y., Wisser, D., Albrecht, T., Frieler,
43 K., Piontek, F., Warszawski, L., Kabat, P., 2014. Multimodel assessment of water scarcity
44 under climate change. *Proc National Acad Sci* 111, 3245–3250.
45 <https://doi.org/10.1073/pnas.1222460110>

46 Silva-Junior, C.H.L., Celentano, D., Rousseau, G.X., Moura, E.G. de, Varga, I. van D.,
47 Martinez, C., Martins, M.B., 2020. Amazon forest on the edge of collapse in the Maranhão
48 State, Brazil. *Land Use Policy* 97, 104806.

1 <https://doi.org/10.1016/j.landusepol.2020.104806>
2 Siqueira, V.A., Paiva, R.C.D., Fleischmann, A.S., Fan, F.M., Ruhoff, A.L., Pontes, P.R.M.,
3 Paris, A., Calmant, S., Collischonn, W., 2018. Toward continental hydrologic–hydrodynamic
4 modeling in South America. *Hydrol Earth Syst Sc* 22, 4815–4842.
5 <https://doi.org/10.5194/hess-22-4815-2018>
6 Smakhtin, V., Döll, C.R. and P., Döll, P., 2004. Taking into Account Environmental Water
7 Requirements in Global-scale Water Resources Assessments. *Comprehensive*
8 *Assessment Research Report 2* [WWW Document]. URL
9 <https://www.iwmi.cgiar.org/assessment/files/pdf/publications/ResearchReports/CARR2.pdf>
10 (accessed 11.17.22).
11 Souza-Filho, P.W.M., Nascimento, W.R., Santos, D.C., Weber, E.J., Silva, R.O., Siqueira,
12 J.O., 2018. A GEOBIA Approach for Multitemporal Land-Cover and Land-Use Change
13 Analysis in a Tropical Watershed in the Southeastern Amazon. *Remote Sens-basel* 10,
14 1683. <https://doi.org/10.3390/rs10111683>
15 Takaku, J., Tadono, T., Tsutsui, K., Ichikawa, M., 2016. VALIDATION OF “AW3D” GLOBAL
16 DSM GENERATED FROM ALOS PRISM. *Isprs Ann Photogrammetry Remote Sens Spatial*
17 *Information Sci* III–4, 25–31. <https://doi.org/10.5194/isprs-annals-iii-4-25-2016>
18 Tanure, T.M. do P., Miyajima, D.N., Magalhães, A.S., Domingues, E.P., Carvalho, T.S.,
19 2020. The Impacts of Climate Change on Agricultural Production, Land Use and Economy
20 of the Legal Amazon Region Between 2030 and 2049. *Econ* 21, 73–90.
21 <https://doi.org/10.1016/j.econ.2020.04.001>
22 Teixeira, A.L. de F., Bhaduri, A., Bunn, S.E., Ayrimoraes, S.R., 2021. Operationalizing
23 Water Security Concept in Water Investment Planning: Case Study of São Francisco River
24 Basin. *Water-sui* 13, 3658. <https://doi.org/10.3390/w13243658>
25 Veldkamp, T.I.E., Wada, Y., Aerts, J.C.J.H., Döll, P., Gosling, S.N., Liu, J., Masaki, Y., Oki,
26 T., Ostberg, S., Pokhrel, Y., Satoh, Y., Kim, H., Ward, P.J., 2017. Water scarcity hotspots
27 travel downstream due to human interventions in the 20th and 21st century. *Nat Commun*
28 8, 15697. <https://doi.org/10.1038/ncomms15697>
29 Wada, Y., Beek, L.P.H. van, Viviroli, D., Dürr, H.H., Weingartner, R., Bierkens, M.F.P.,
30 2011. Global monthly water stress: 2. Water demand and severity of water stress. *Water*
31 *Resour Res* 47. <https://doi.org/10.1029/2010wr009792>
32 Xavier, A.C.F., Rudke, A.P., Serrão, E.A. de O., Terassi, P.M. de B., Pontes, P.R.M., 2021.
33 Evaluation of Satellite-Derived Products for the Daily Average and Extreme Rainfall in the
34 Mearim River Drainage Basin (Maranhão, Brazil). *Remote Sens-basel* 13, 4393.
35 <https://doi.org/10.3390/rs13214393>