

Structure and Morphology of an Active Conjugate Relay Zone, Messina Strait, Southern Italy

Dorsey, R.J.¹, Longhitano, S.G.², Chiarella, D.³

¹Department of Earth Sciences, University of Oregon, Eugene, OR (USA)

²Department of Sciences, University of Basilicata, Potenza (Italy)

³Department of Earth Sciences, Royal Holloway University of London (UK)

In Press (8 August, 2023)

This manuscript has undergone peer review and is accepted for publication in *Basin Research*. This is a peer-reviewed preprint submitted to EarthArXiv.

ABSTRACT

Messina Strait is a narrow fault-bounded marine basin that separates the Calabrian peninsula from Sicily in southern Italy. It sits in a seismically active region where normal fault scarps and raised Quaternary marine terraces record ongoing extension driven by southeastward rollback of the Calabrian subduction zone. A review of published studies and new data shows that normal faults in the Messina Strait region define a conjugate relay zone where displacement is transferred along-strike from NW-dipping normal faults in the northeast (southern Calabria) to the SE-dipping Messina-Taormina normal fault in the southwest (offshore eastern Sicily). The narrow marine strait is a graben undergoing active subsidence within the relay zone, where pronounced curvature of normal faults results from large strain gradients and clockwise rotations related to fault interactions. Based on regional fault geometries and published age constraints, we infer that normal faults in southern Calabria migrated northwest while normal faults in NE Sicily migrated southeast during the past ~2–2.5 Myr. This pattern has resulted in tectonic narrowing of the strait through time by regional extension and rapid mantle-driven uplift.

KEY WORDS: Messina Strait, Pleistocene, normal faults, relay zone, sedimentation

INTRODUCTION

Accommodation zones are a common feature of rift systems where offset is transferred along strike between adjacent normal faults (Rosendahl, 1987; Morley et al., 1990; Gawthorpe and Hurst, 1993; Peacock and Sanderson, 1994; Childs et al., 1995; Morley, 1995; McClay et al., 2002). They comprise two main types: (1) synthetic accommodation zones, or relay ramps, where overlapping normal faults dip in the same direction; and (2) conjugate relay zones where faults have opposing dip direction. Conjugate relay zones are divided into graben-type, where normal faults dip toward each other to form a subsiding graben in the zone of fault overlap (Fig. 1), and horst-type relay zones where crust is uplifted between normal faults that dip away from each other (Childs et al., 2019). Graben-type and horst-type relay zones are also designated with terms “convergent” and “divergent”, respectively (Childs et al., 2019). Conjugate relay zones commonly display high lateral strain gradients and vertical-axis rotations related to slow lateral propagation of overlapping faults (Acocella et al., 1999, 2000; Ferrill and Morris, 2001; Imber et al., 2004; Childs et al., 2019).

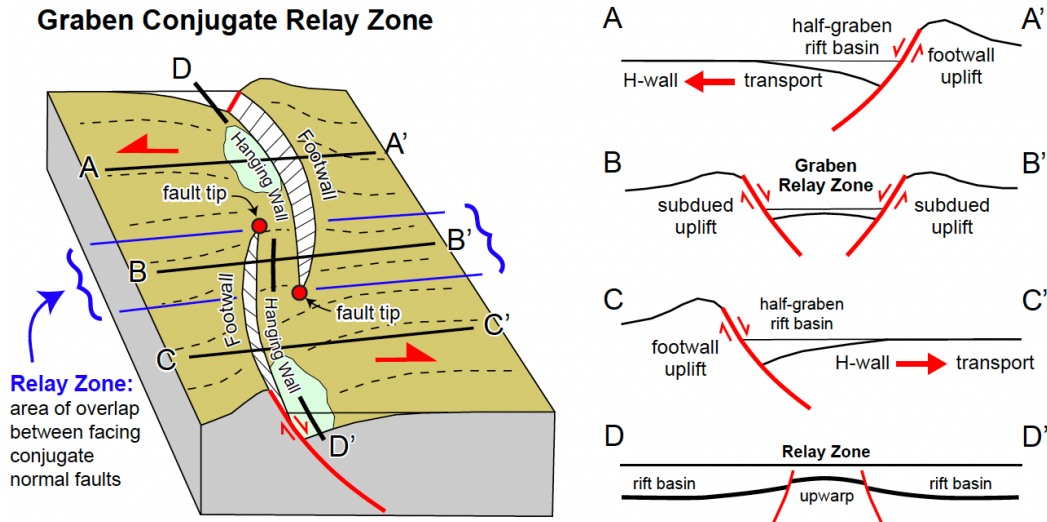


Figure 1. Major 3D geometries, idealized cross sections, and kinematics of interacting normal faults in a graben conjugate relay zone. Large strain gradients are commonly observed in the area of overlap (relay zone) where offset decreases along strike toward the fault tips.

The Messina Strait (Southern Italy) sits in a seismically active region where ongoing NW-SE extension is driven by southeastward retreat of the Ionian subduction zone and Calabrian forearc crust (Fig. 2) (Faccenna et al., 2003; Rosenbaum and Lister, 2004; Gutscher et al., 2016). The Strait forms a narrow hook-shaped constriction where daily exchange of water masses between the Ionian and Tyrrhenian seas produces strong tidal currents that erode, mobilize, and deposit sediment (e.g., Longhitano, 2018a; Martorelli et al., 2023). Numerous studies have documented active faults, earthquakes, tsunamis, sedimentation, and uplift in this region (Ghisetti, 1981, 1992; Monaco and Tortorici, 2000; Doglioni et al., 2012; Aloisi et al., 2013; Ridente et al., 2014; Fu et al., 2017; Longhitano, 2018b, 2018a; Longhitano and Chiarella, 2020; Barreca et al., 2021; Antonioli et al., 2021; Meschis et al., 2022a, 2022b; Gallen et al., 2023), but uncertainty persists regarding the long term evolution of active faults over the past 2 – 3 Myr, vertical crustal motions, growth of topography, and seafloor bathymetry in this region.

This paper integrates information from previous studies with new data to examine active extensional kinematics and structural controls on topography, bathymetry, and sedimentation in the modern Messina Strait. We find that normal faults in this area define a conjugate relay zone (c.f. Childs et al., 2019), where displacement on opposed-dipping normal faults is transferred through a zone of overlap near the fault tips. The distinctive plan-view hook shape and strong curvature of basin-bounding normal faults reflects large strain gradients and clockwise rotations near the interacting faults. These fault interactions are part of a rapidly evolving 4D strain field related to ongoing extensional breakup of the Calabrian forearc region, as tear faults in the subducting Ionian slab propagate into the overlying forearc lithosphere.

TECTONIC and GEOLOGIC SETTING

Regional Geology and Tectonic Stratigraphy

The central Mediterranean region has a complex history of Cenozoic thrusting and mountain building related to subduction at the Iberian margin, followed by rifting and opening of the Tyrrhenian Sea during rapid rollback and retreat of the Ionian subduction zone (Wortel and Spakman, 2000; Rosenbaum et al., 2002; Rosenbaum and Lister, 2004). Forearc crust in Calabria and NE Sicily has translated ~ 800 km to the southeast over the past ~ 30 Myr in response to rollback of the highly arcuate Ionian subduction zone (Fig. 2) (Faccenna et al., 2003, 2004; Gutscher et al., 2016; Romagny et al., 2020; van Hinsbergen et al., 2020; Loreto et al., 2021).

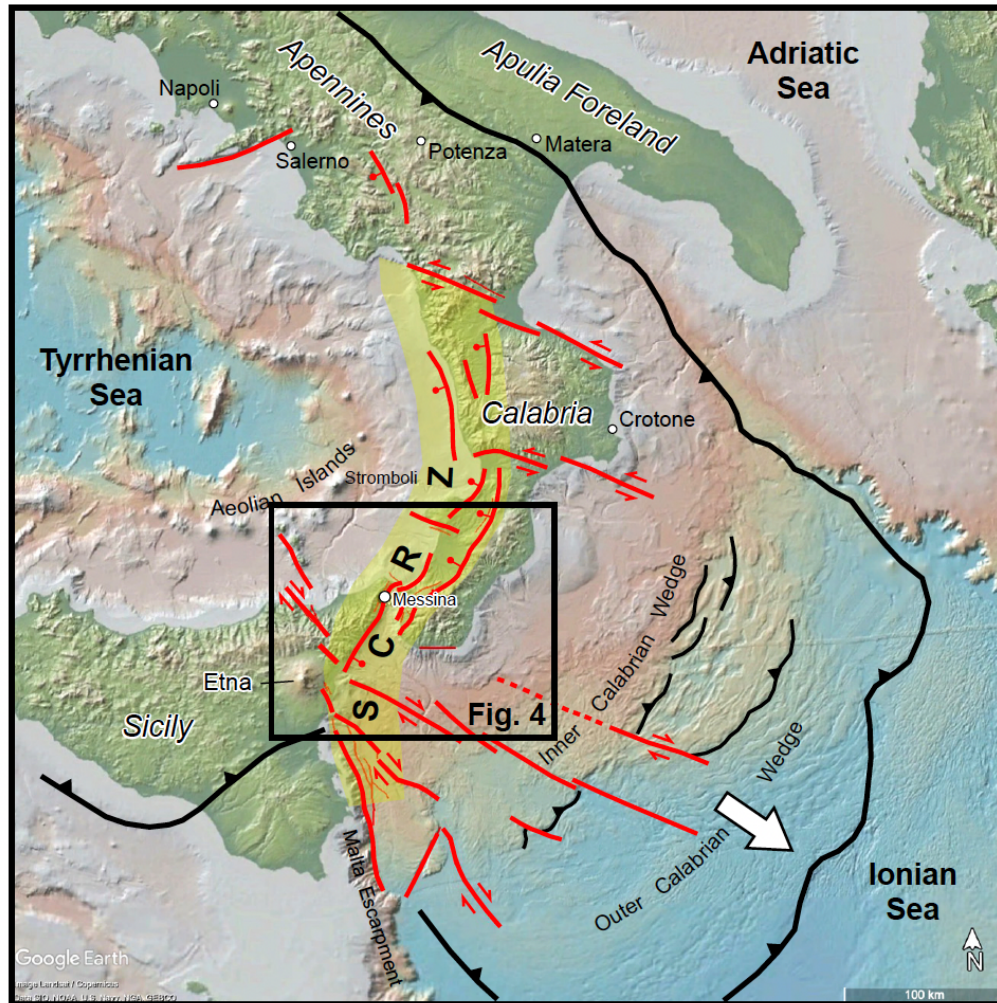


Figure 2. Regional tectonics of southern Italy showing major subduction zones and faults (compiled from Polonia et al., 2011; Gutscher et al., 2016; Scarfi et al., 2018; Maesano et al., 2020). SCRZ is the Siculo-Calabrian Rift Zone. Topography and bathymetry from GeoMapp App.

The Calabria-Peloritani terrane is a belt of Paleozoic to Mesozoic plutonic and metamorphic rocks in southern Calabria and NE Sicily that form a stack of thrust nappes and ophiolite-bearing tectonic units of the Alpine internal zone (Rossetti et al., 2001; Vitale and Ciarcia, 2013; Cirrincione et al., 2015). Irregular retreat of the subduction zone has produced tear faults in the subducting slab that promote mantle upwelling, decompression melting, basaltic volcanism, and NW-striking strike-slip faults that partition the crust into zones of upper-plate extension and oblique transtensional deformation (Fig. 2) (Faccenna et al., 2004, 2011; Gallais et al., 2013; Scarfi et al., 2018; Maesano et al., 2020; Jolivet et al., 2021; Pirrotta et al., 2021, 2022; Sgroi et al., 2021).

Crystalline rocks of the Calabria-Peloritani terrane are unconformably overlain by Cenozoic sedimentary deposits that record a change from subduction-related compression and shortening to crustal extension, rifting and strike-slip faulting due to rollback and retreat of the Ionian subduction zone (Monaco et al., 1996; Cavazza et al., 1997; Van Dijk et al., 2000; Tripodi et al., 2013). Late Oligocene to middle Miocene shallow-marine deposits of the Stilo-Capo D'Orlando Formation, olistostrome deposits of the Argille Varicolori, and intra slope deposits of the Motta San Giovanni Formation accumulated in thrust-bounded accretionary trench-slope and wedge-top basins and along a transform margin (Cavazza and

Ingersoll, 2005; Critelli et al., 2017; Rohais et al., 2021; Critelli and Martín-Martín, 2022). Middle to late Miocene normal faults and rift basins were initiated by the onset of extension in western Calabria at the southeast margin of the Tyrrhenian Sea, while subduction-related shortening and sedimentation continued in eastern Calabria. By late Miocene time, the entire Calabrian forearc terrane was affected by extension and opening of NE-striking rift basins cut by coeval NW-striking strike-slip faults (del Ben et al., 2008; Tripodi et al., 2013). Strike-slip faults in this region represent the upper crustal expression of tears in the subducting Ionian slab (e.g., Jolivet et al., 2021; Sgroi et al., 2021), which have segmented the upper plate of the retreating Ionian subduction zone since middle to late Miocene time (Civile et al., 2022; and references therein). NW-striking strike-slip faults display right-lateral offset in the southwest and left-lateral offset in the northeast (Tansi et al., 2007; del Ben et al., 2008; Longhitano et al., 2014; Brutto et al., 2016), consistent with microplate kinematics predicted for southeastward extrusion of the subduction zone and highly arcuate offshore accretionary wedge (Fig. 2) (Serpelloni et al., 2010; Zecchin et al., 2015; Viti et al., 2021).

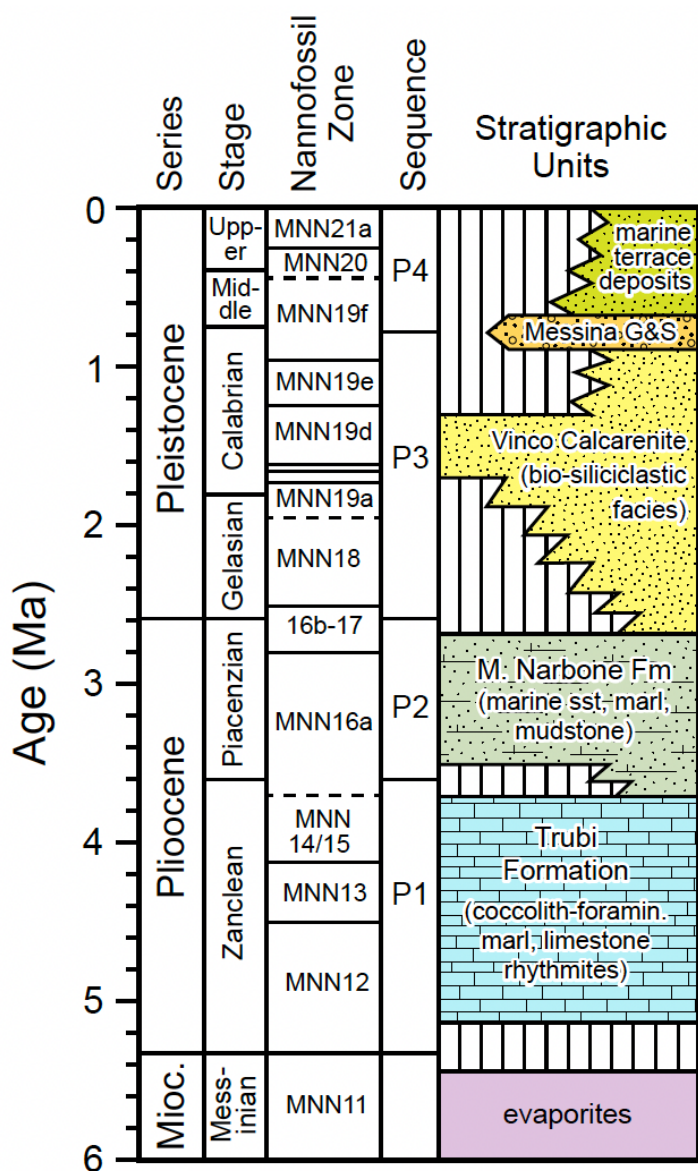


Figure 3. Generalized Pliocene - Pleistocene stratigraphy of the Messina Strait region (compiled from Di Stefano et al., 2007; Longhitano et al., 2012; Zecchin et al., 2015). P1 to P4 are tectono-stratigraphic sequences of Zecchin et al. (2015). MNN = Mediterranean Neogene Nannoplankton zone (Rio et al., 1990).

Pliocene-Pleistocene deposits of southern Calabria and NE Sicily are divided into four tectono-sedimentary sequences (P1 to P4; Fig. 3) that record fault-controlled phases of subsidence and uplift related to retreat and fragmentation of the Ionian subduction zone (Di Stefano et al., 2007; Zecchin et al., 2015; Tripodi et al., 2018). Sequence P1 overlies Messinian evaporites and consists of lower Pliocene coccolith-foraminiferal marls and marly rhythmites of the Trubi Formation that accumulated in low-energy offshore marine basins. Sequence P2 includes upper Pliocene fine-grained marine sandstones, marls and mudstones of the Monte Narbone Formation and correlative units (Cavazza et al., 1997; Bonardi et al., 2001; Di Stefano et al., 2007), which record continued offshore marine deposition with increasing input of fine-grained siliciclastic sediment from distal sources (Cavazza and Ingersoll, 2005). Sequence P3 is composed of early Pleistocene mixed bioclastic-siliciclastic cross-bedded sandstones of the Calcareniti di Vinco Formation (Vinco Calcarenites) and equivalent mudstones and conglomerates that

accumulated in tidal straits during development of the modern fault system (di Stefano and Longhitano, 2009; Longhitano, 2011, 2018b; Longhitano et al., 2012, 2021; Zecchin et al., 2015; Rossi et al., 2017; Chiarella et al., 2021). The Pellaro paleo-high is a fault-bounded horst in the footwall of the southern Armo fault, east of the Messina Strait (Fig. 4), that underwent uplift during deposition of the Early Pleistocene (Gelasian) Vinco Calcarenes (Longhitano, 2018b; Chiarella et al., 2021). Paleocurrent data record transport north and south, away from the Pellaro paleo-high, indicating that the horst formed a structural high on the flank of the paleo-Messina Strait during deposition (Longhitano, 2018b). Tidal deposits north of the paleo-high display stratal wedge geometries and fanning dips produced by syn-tectonic tilting away from the uplifting horst during early stages of fault growth (Chiarella et al., 2021; Longhitano et al., 2021).

The Pleistocene Messina Gravels and Sands Formation formed by progradation of Gilbert deltas away from emerging topography on both sides of the Messina Strait (Barrier, 1986; Barrier et al., 1986; Lentini et al., 2000; di Stefano and Longhitano, 2009; Longhitano, 2018b; Longhitano et al., 2021). Messina Gravels and Sands are capped by thin red soils that record the onset of uplift and abandonment of the terrace surface. Sequence P4 is a sequence of middle to late Pleistocene marine and fluvial terrace deposits in southern Calabria and NE Sicily that have been uplifted to elevations up to 1.0-1.2 km in the past ~ 1.0 to 2.5 Myr (Figs. 3, 4) (Antonioli et al., 2006, 2021; Roda-Boluda and Whittaker, 2017).

Active Tectonics of the Messina Strait Region

The Siculo-Calabrian Rift Zone is a ca. 350-km long belt of seismically active, north- to NE-striking normal faults in Calabria and eastern Sicily that accommodate NW-SE extension in the upper plate of the Ionian subduction zone (Figs. 2, 4) (Valensise and Pantosti, 1992; Westaway, 1993; Tortorici et al., 1995, 2003; Monaco et al., 1997; Monaco and Tortorici, 2000; Jacques et al., 2001; Catalano et al., 2003, 2008; Palano et al., 2012, 2017; Brutto et al., 2016; Presti et al., 2019; Pirrotta et al., 2021, 2022). Well preserved normal fault scarps, marine terraces, river channel profiles, and low-temperature thermochronology record Pleistocene footwall uplift at rates of ~ 0.2 – 2 mm/yr in Sicily (Tortorici et al., 1995; Catalano and De Guidi, 2003a; Catalano et al., 2008; Pavano et al., 2016; Meschis et al., 2022a) and southern Calabria (Montenat et al., 1991; Monaco et al., 1997; Catalano et al., 2003; Antonioli et al., 2006, 2021; Roberts et al., 2013; Roda-Boluda and Whittaker, 2017; Quye-Sawyer et al., 2021; Meschis et al., 2022a; Gallen et al., 2023). The Cittanova, Calanna, Scilla, and Armo faults dip northwest and terminate to the northeast at the Coccorino and Nicotera-Gioiosa fault zones (Fig. 4). An en-echelon array of north- to NNE-striking faults in southwest Calabria bound the eastern margin of the Messina Strait (Fig. 4). In NE Sicily, NW-SE extension is accommodated primarily on the 50 km long offshore Messina-Taormina fault, which dips SE toward the Ionian Sea and terminates in the southwest against strands of the Aeolian-Tindari-Letojanni right-lateral strike-slip fault zone.

The Messina-Taormina fault is an enigmatic structure that may have ruptured during the catastrophic 1908 M7.1 Messina earthquake. Some studies conclude that this fault was the source of the earthquake (e.g., Pino et al., 2000, 2009; Serpelloni et al., 2010; Meschis et al., 2019), while others place the rupture on farther offshore SE-dipping normal faults (Barreca et al., 2021) or west-dipping normal faults in Calabria (Aloisi et al., 2013; Argnani, 2021, 2022). Submarine slope failures, slides and slumps are common at the steep western margin of the Strait, in the immediate hanging wall of the fault, and may have contributed to production of tsunamis during the 1908 earthquake (Billi et al., 2008; Goswami et al., 2014, 2017; Schambach et al., 2020). Although the Messina-Taormina fault is implicated as a major active normal fault based on a narrow linear shelf, steep seafloor bathymetry, and regional patterns of uplift and erosion in northeast Sicily (Monaco and Tortorici, 2000; Catalano and De Guidi, 2003b; Catalano et al., 2003, 2008; De Guidi et al., 2003; Pavano et al., 2016), to date the fault has not been clearly imaged with marine seismic data causing some workers to question the existence of an active SE-dipping normal fault in this position (Argnani et al., 2009; Argnani, 2021, 2022; Argnani and Pino, 2023). However, published offshore

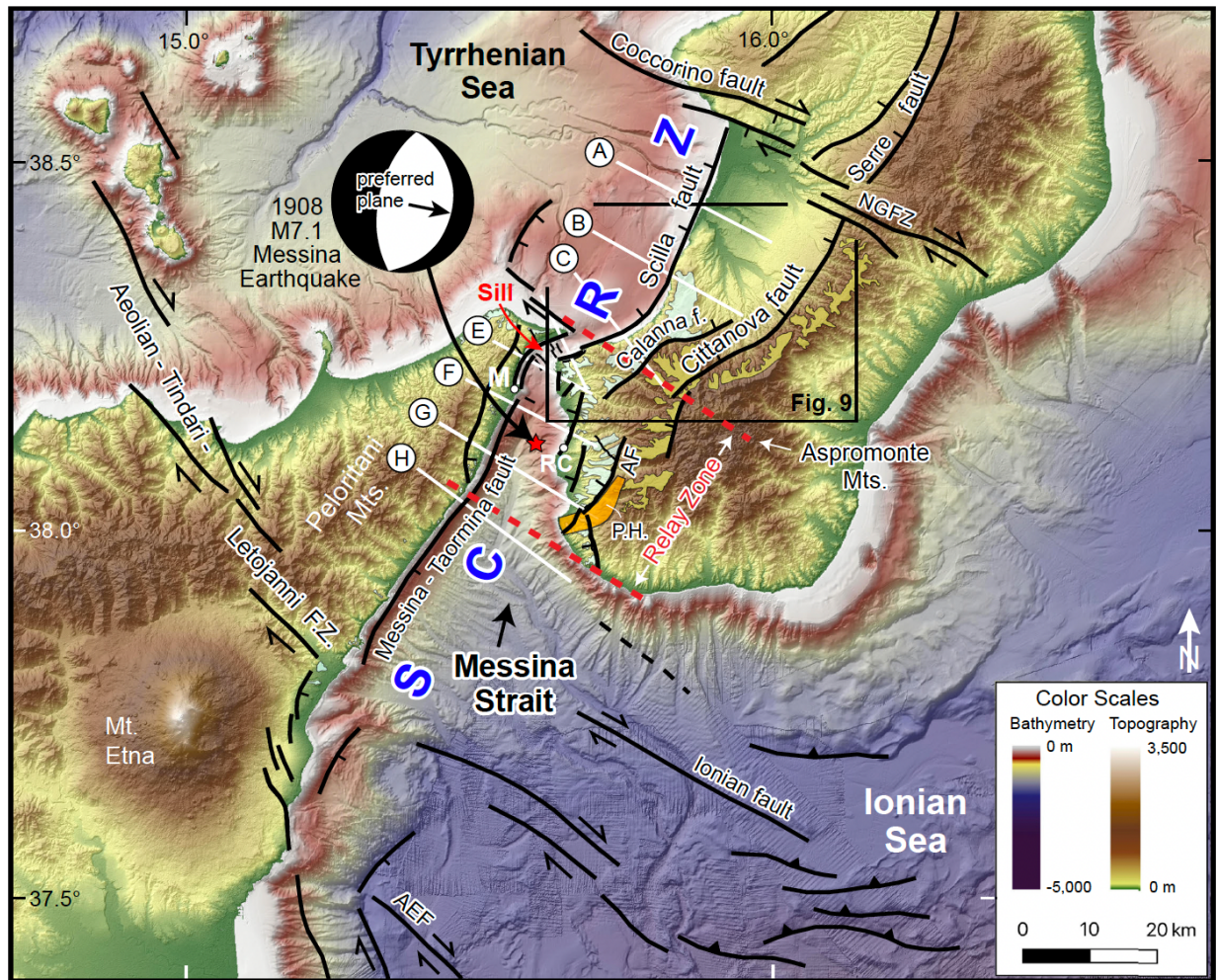


Figure 4. Topographic and bathymetric map showing major faults, location of profile transects in Fig. 5 (white lines with letters), and uplifted marine terraces (from Catalano and De Guidi, 2003; Roda-Boluda and Whittaker, 2017; Monaco et al., 2017; Antonioli et al., 2021) (faults compiled from Antonioli et al., 2006; Doglioni et al., 2012; Ridente et al., 2014; Pavano et al., 2016; Tripodi et al., 2018; Sgroi et al., 2021). Yellow surfaces are early Pleistocene marine terraces at elevations of ~ 1.0 - 1.2 km; light blue surfaces are ≤ 730 ka at lower elevations. The Messina Strait conjugate relay zone is the area of overlap between opposite-dipping normal faults between the red dashed lines, where strain is transferred from SE-dipping faults in the southwest to NW-dipping faults in the northeast. Fault plane solution for the 1908 M7.1 Messina earthquake is from Boschi et al. (1989), epicenter of Gasparini et al. (1982). Abbreviations: AEF, Alfeo-Etna fault; AF, Armo fault; M, Messina; NGFZ, Nicotera-Gioiosa fault zone; P.H. Pellaro paleo-high; RC, Reggio Calabria; SCRZ, Siculo-Calabrian Rift Zone. Topography is SRTM 1 arc-second DEM downloaded from USGS website (<https://earthexplorer.usgs.gov/>), bathymetry is 1/16 arc-minute data from EMODnet (<https://portal.emodnet-bathymetry.eu/>) displayed in QGIS version 3.24.

seismic lines in Messina Strait (Argnani et al., 2009) stop just short of the likely trace of the fault, at the top of a steep slope with abundant submarine slides and debris cones (Fig. 4), and thus do not provide a definitive test of this fault. Moreover, GPS data and modeling point to the Messina-Taormina fault as a major structure bounding the west side of the Strait that accommodates rapid NW-SE extension (Serpelloni et al., 2010). We therefore treat this as a large active normal fault that remains poorly imaged and requires more work to assess its role in the 1908 earthquake (e.g., Argnani and Pino, 2023).

GPS velocities reveal NW-SE extension across the Siculo-Calabrian Rift Zone at rates of 3 – 4 mm/yr (Serpelloni et al., 2010; Palano et al., 2012). The NNW-trending Malta Escarpment and related strike-slip faults east of Sicily connect north to a system of right-stepping dextral faults in the Aeolian-Tindari-

Letojanni fault zone (Figs. 2, 4) (Palano et al., 2015; Gutscher et al., 2016, 2017; Scarfi et al., 2018; Maesano et al., 2020). This fault system represents a diffuse lithospheric boundary located above a tear in the Ionian slab that accommodates differential motion between the Ionian and Sicily microplates, providing a conduit for mantle-derived magmas of Mount Etna (e.g., Goes et al., 2004; Faccenna et al., 2011). The Peloritani Mountains in northeast Sicily represent a semi-independent crustal block east of the Aeolian-Tindari-Letojanni fault zone, northwest of the Messina-Taormina normal fault, that accommodates northwest motion away from southern Calabria (Fig. 4) (Catalano et al., 2003; Pavano et al., 2015, 2016). Slip on the Messina-Taormina fault produces hanging-wall subsidence in the Strait and footwall uplift in the Peloritani Mountains that may be enhanced by mantle doming in the upper plate of the Ionian subduction zone (Serpelloni et al., 2010; Meschis et al., 2019; Barreca et al., 2021).

Modern Messina Strait

The present-day Messina Strait is a marine connection between the Tyrrhenian Sea in the north and the Ionian Sea in the south (Fig. 4) (Doglioni et al., 2012; Longhitano, 2018a; Martorelli et al., 2023). The sill is a shallow narrow constriction, 3-5 km wide and <100 m deep, which formed a narrow land bridge for several thousand years during the last glacial maximum sea-level lowstand ca. 25 – 20 ka (Antonioli et al., 2016). A tidal elevation difference of ca. 35 cm between the two marine basins produces a water-surface gradient and consequent gravity-driven water mass transfers every six hours per day (Vercelli, 1925; Defant, 1940). This tidal difference stimulates collinear tidal currents moving axially along the Strait that accelerate up to velocities of $> 3 \text{ m sec}^{-1}$ as they traverse the shallow constriction across the strait sill (Brandt et al., 1999). Although waves are present in the Strait, tidal currents represent the major element controlling net sediment transport along two principal directions away from the strait center (Longhitano, 2018a; Martorelli et al., 2023). Because of the high shear stress exerted by strong tidal currents, the sill is a by-pass zone where most of the sediment load is transported in suspension and coarse-grained deposits are locally entrapped within topographic lows of the sill (Longhitano, 2013, 2018a). Fast current velocities maintain a rocky marine substrate at the sill, and sediment is swept into wider, deeper depositional zones to the north and south where it accumulates in large-scale tidal dune fields (Santoro et al., 2004).

FAULT ZONE ANALYSIS

Conjugate Relay Zone

The Messina Strait conjugate relay zone (c.f. Childs et al., 2019) is defined here as the zone of overlap and strain transfer between two sets of opposed-dipping normal faults: (1) NW-dipping faults in southwest Calabria; and (2) the SE-dipping Messina-Taormina fault and associated normal faults in NE Sicily (Fig. 4). Both fault sets are present within the relay zone and dip toward each other to form a graben where subsidence maintains the basin floor below sea level. The width of the strait decreases to ~ 3 km and water shallows to <100 m depth in the narrow constriction at the sill. Closely spaced normal faults strike perpendicular to the major strait-bounding faults across the sill in a zone of broad doming relative to deeper offshore basins to the south and north (Fig. 4), similar to the along strike pattern of subtle uplift see in classic conjugate relay zones (Fig. 1D).

The morphological expression of normal faults in the Messina Strait is revealed in a series of fault-perpendicular (Fig. 5) and fault-parallel (Fig. 6) profiles that were constructed from topographic and bathymetric data and integrated with published fault maps (Fig. 4) (Antonioli et al., 2006; Ferranti et al., 2008; Doglioni et al., 2012; Ridente et al., 2014; Critelli et al., 2016; Pavano et al., 2016; Tripodi et al., 2018, 2022). Fault-perpendicular profiles (Fig. 5) show large displacements with structural relief up to $\sim 1,200$ m on individual normal faults. The Scilla fault forms a precipitous NW-facing escarpment with $\sim 1,000$ m of vertical relief northeast of the constriction (Figs. 4, 5B, 5C). Fault-parallel profiles (Fig. 6) reveal systematic along-strike decrease in footwall elevation and water depth, which collectively repre-

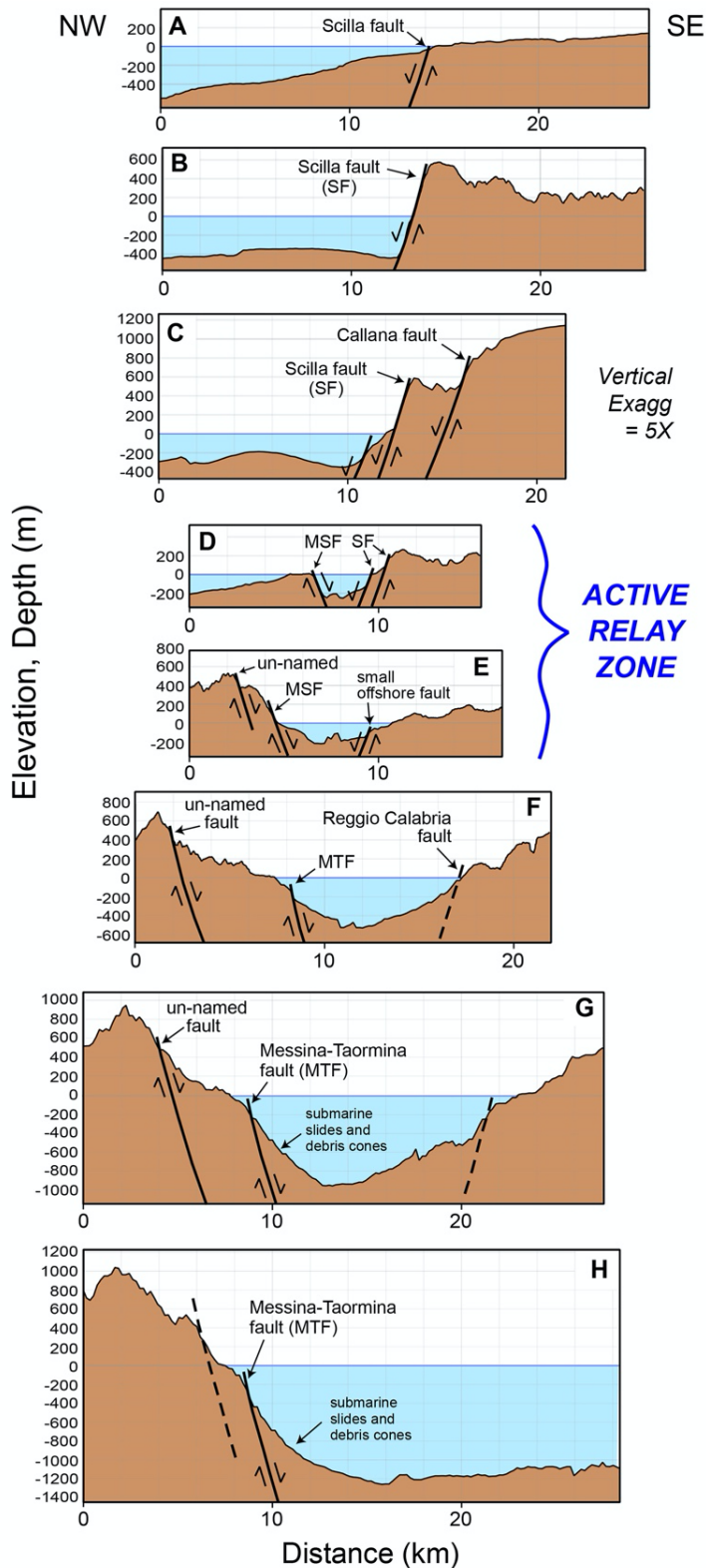


Figure 5. Fault-perpendicular topographic-bathymetric profiles showing major faults and related onshore-offshore morphology. Location of profiles in Fig. 4. MTF is Messina-Taormina fault.

sent fault throw, in the zone of fault overlap where strain is transferred from the NW-dipping Scilla fault to the SE-dipping Messina-Taormina fault. The Messina-Taormina fault reveals ~ 1,100 m of throw (Fig. 6B) and up to 2,200 m of combined total offset on the master fault and adjacent smaller normal faults in NE Sicily (Fig. 5H). Transfer of fault displacement is also reflected in elevations of Quaternary marine terraces on both sides of the relay zone. In addition to stepped profiles that reveal older terraces at higher elevations due to regional uplift, individual terraces in the footwall of normal faults in southern Calabria and NE Sicily dip gently toward fault tips in the zone of fault overlap (Monaco et al., 2017; Barreca et al., 2021), mimicking the overall decrease of elevation seen in longitudinal profiles of footwall topography.

Figure 7A shows the distribution of major active faults, Pleistocene deposits, and modern seafloor bathymetry of the Messina Strait region. The linear coastline of northeast Sicily is controlled by uplift in the footwall of the Messina-Taormina fault along a strike distance of ca. 50 km (see also Fig. 4). Co-seismic surface displacements during the 1908 earthquake form a characteristic pattern of footwall uplift and hanging wall subsidence produced by slip on an active normal fault (Fig. 7B) (Meschis et al., 2019). In contrast to the linear western margin, the irregular eastern margin of the strait hosts a north-trending en-

echelon array of shorter active NNE-striking faults and fault segments that control the shape of the coastline. West-facing promontories are produced by footwall uplift near southern fault terminations, and scallop-shaped bays form in areas of hanging-wall subsidence (Fig. 7A). The oldest fault in this en-echelon

set is the Armo fault, which formed the active margin of the paleo-constriction during deposition of early Pleistocene tidal strait deposits (Longhitano, 2011, 2018b; Chiarella et al., 2021).

A distinctive feature of the conjugate relay zone is pronounced plan-view curvature of normal faults adjacent to the central sill (Figs. 4, 7). Outside of the relay zone the regional strike of normal faults is 030°–

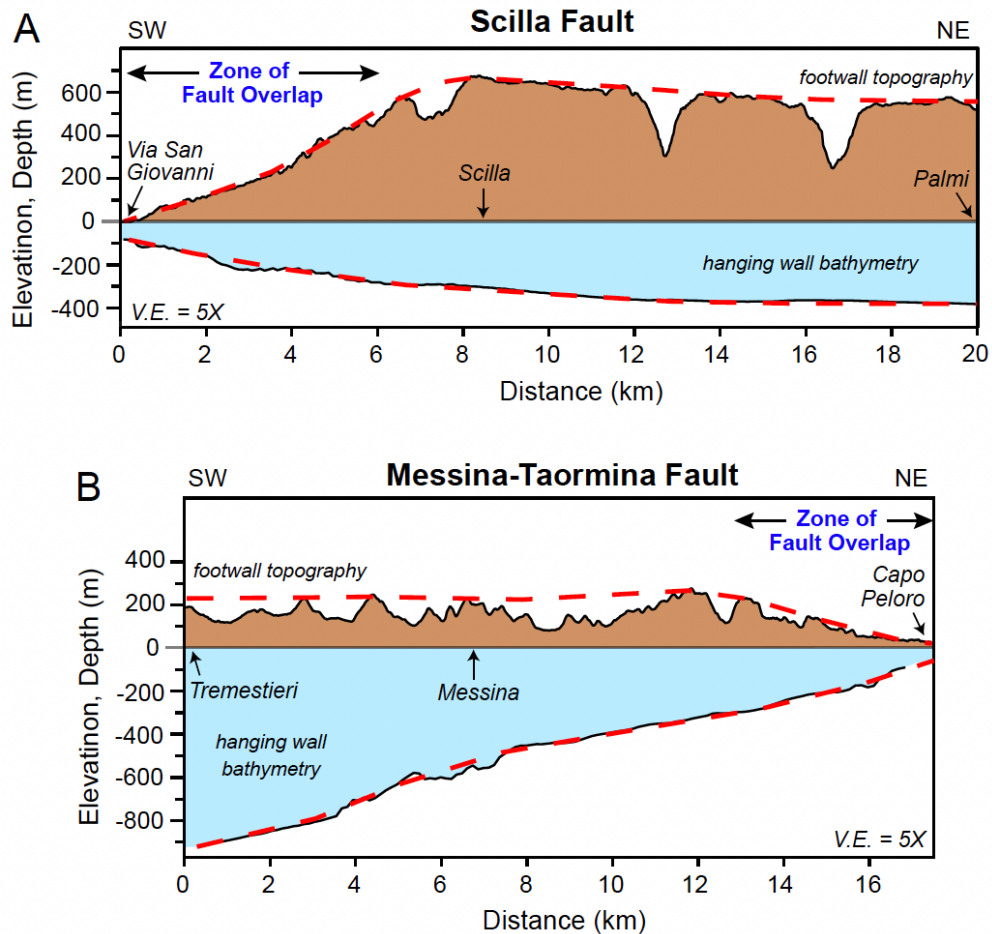
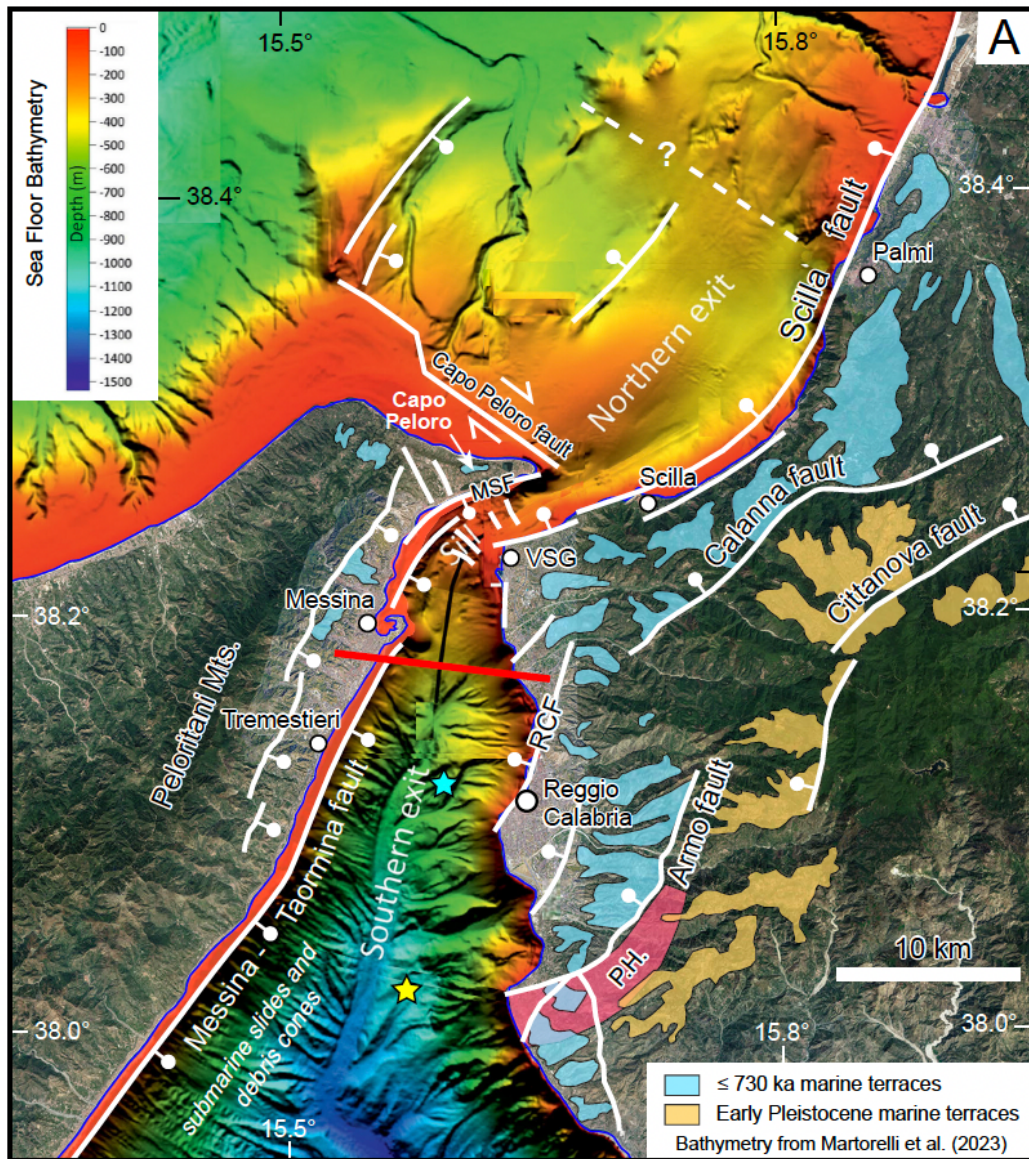


Figure 6. Longitudinal, strike-parallel profiles of footwall topography and hanging-wall bathymetry for the two major facing normal faults of the Messina Strait conjugate relay zone. (A) Scilla fault. (B) Messina-Taormina fault. Vertical separation between smoothed footwall elevation and hanging-wall water depth (red dashed lines) represents approximate fault throw, which likely are minimum values due to footwall erosion and hanging-wall sedimentation. Throw decreases along strike in the zone of fault overlap and strain transfer near the fault tips. Reference locations shown in Figure 7A.

035°. Faults curve progressively along strike into the relay zone where strike values increase to 070°–075°, deviating from the regional fault strike by 40°–45° (Fig 7). The area of greatest strike deviation coincides with minimum fault offset and subdued footwall topography near the tips of the overlapping faults (Figs. 5D, 5E, 6). The offshore Capo Peloro fault (Fig. 7) is marked by a prominent NW-striking bathymetric lineament and truncated Plio-Pleistocene deposits with growth strata in the subsurface (Doglioni et al., 20212).

Figure 8 shows seafloor bathymetry and an aerial view of Messina Strait, illustrating the influence of active faulting on local topography, submarine morphology, and sedimentary processes. The Messina Strait relay zone is thus characterized by strong fault curvature where fault offset, footwall elevation, and water depth all decrease along strike toward the tips of facing normal faults in the area of extensional strain transfer and maximum reorientation of fault strike.



Narrow linear shelf:
~1 km wide, < 50 m deep

Estimated epicenter for M7.1
1908 Messina Earthquake

★ Gasparini et al. (1982)

☆ Schick (1977)

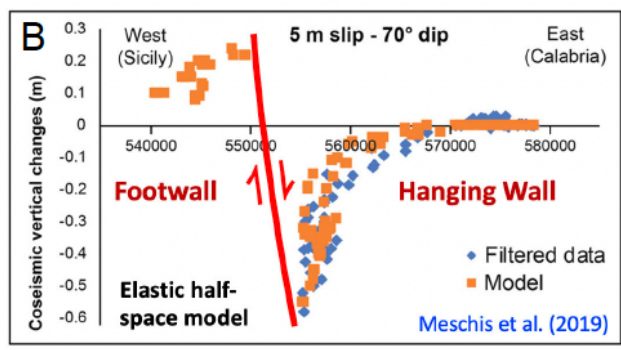


Figure 7. Faults and bathymetry of Messina Strait. (A) Map of sea floor bathymetry (modified from Martorelli et al., 2023) and active faults. Red line is approximate position of transect in part B. P.H. is Pellaro paleo-high; RCF is the Reggio Calabria fault. (B) Profile view of surface displacements associated with the 1908 M7.1 Messina earthquake, showing close agreement between observed surface motions (filtered data) and modeled geometry of flexural slip on a normal fault with hanging-wall subsidence greater than footwall uplift (Meschis et al., 2019). Submarine slides and debris cones fill the proximal hanging wall of the Messina-Taormina fault.

A

Tidal Strait Depositional Zones of Longhitano (2013)

Sill (strait centre): structural upwarp in shallow water, strongest currents produce exposed rocky substrate

Narrow shelves & steep submarine slopes: mass wasting, sediment gravity flows

Dune-bedded strait zone:
 - shallower, larger in north
 - deeper, patchy in south

Submarine channels: sediment transported to deeper basin by turbidity currents

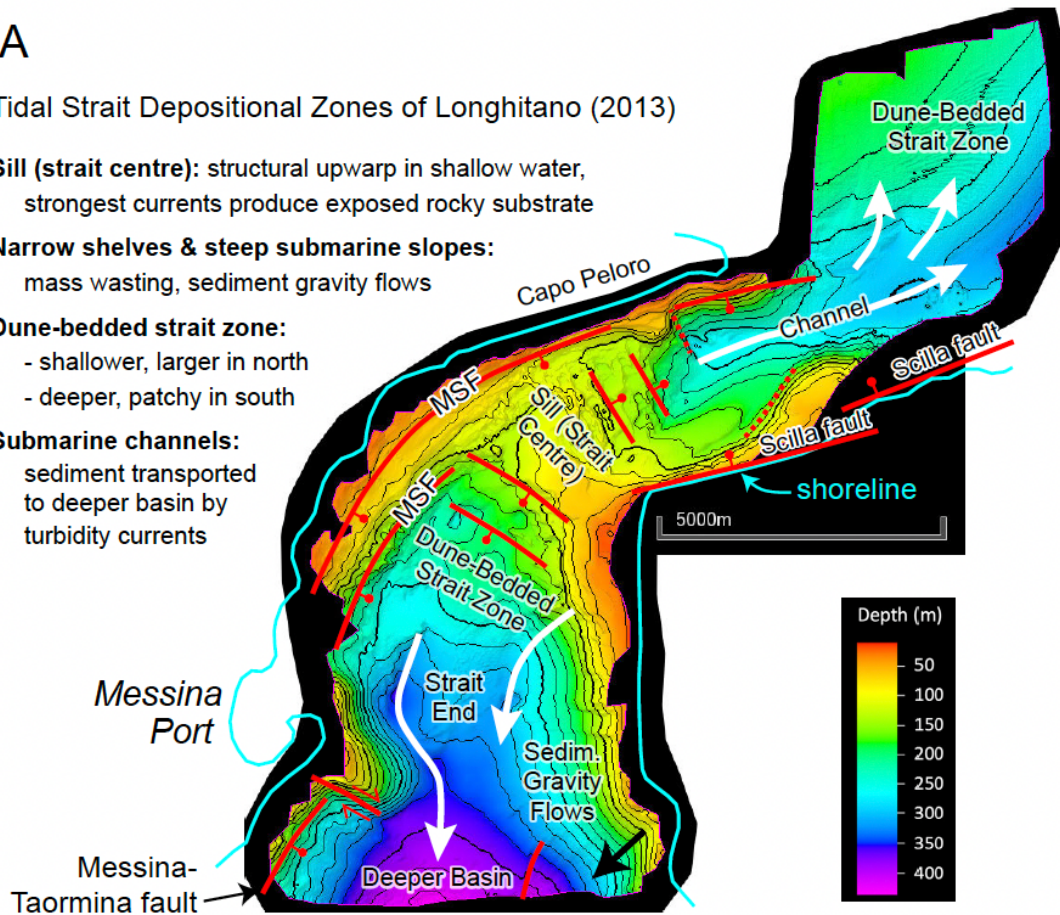


Figure 8. (A) Detailed bathymetric map of Messina Strait showing active fault controls on seafloor bathymetry and sediment transport processes. MSF is Messina Strait fault. (B) Oblique aerial photo looking east at Messina Strait and bounding normal faults of the conjugate relay zone. Photo Credit: Longhitano et al., 2020, Field Trip Guide FT1, Tidalites Conference 2022.

Normal Fault Initiation and Migration

Figure 9 depicts the evolution of river catchments in response to initiation and migration of normal faults in southwest Calabria (Pirrota et al., 2016) (faults from Atzori et al., 1983; Ghisetti, 1992; Jacques et al., 2001). The reconstruction is based on quantitative morphometric analysis that highlights the relative ages of river channel features, which are controlled by – and preserve a record of – progressive initiation and migration of normal faults through time (Pirrota et al., 2016). Older faults in the southeast are still active today, likely with slower slip rates than the most active faults at the modern coastline.

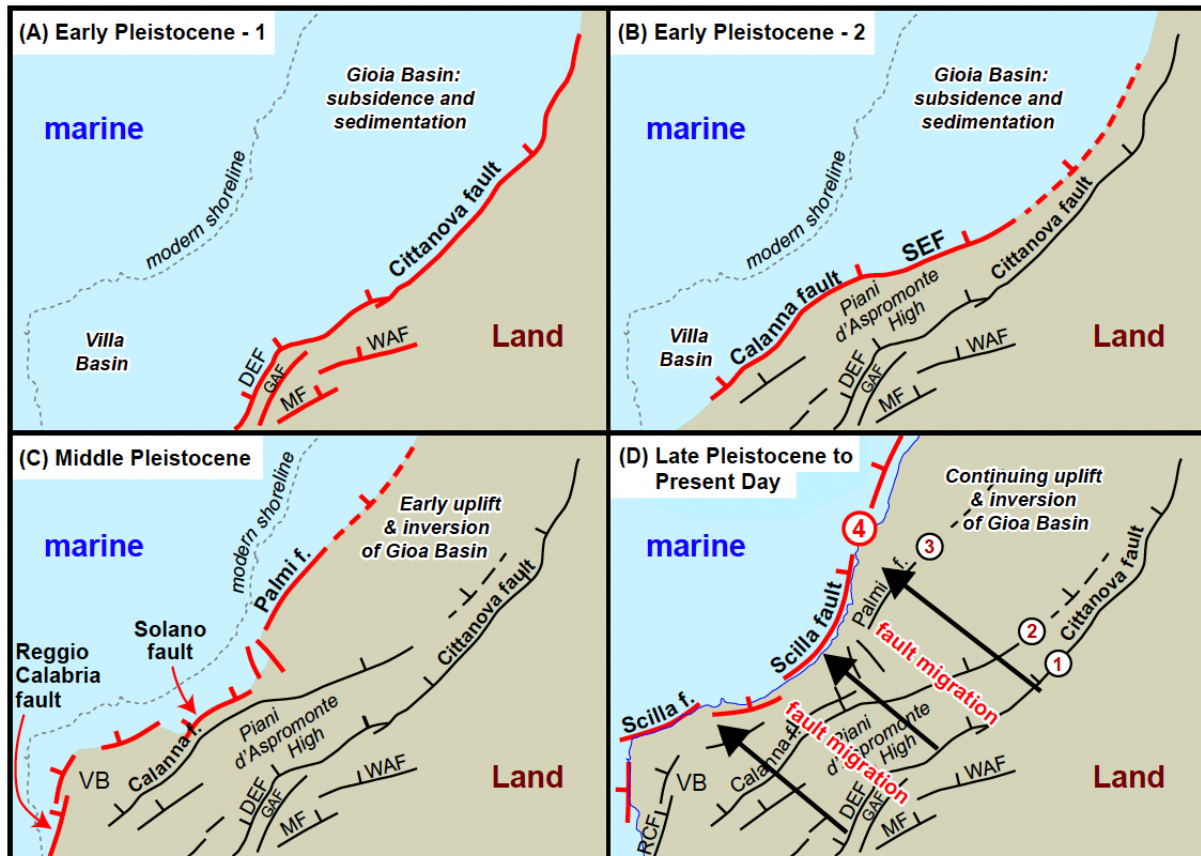


Figure 9. Maps showing initiation and migration of normal faults in southwest Calabria based on river channel evolution and fault analysis, modified from Pirrota et al. (2016). Bold red lines are faults that became active in each stage of structural and geomorphic development. Older faults in the southeast (black fault lines) are still active today, likely with slower slip rates than the most active faults at the modern coastline. (A) During early Pleistocene Stage 1 (Gelasian), an early phase of fault slip on the Cittanova, Delianuova and Gambarie faults produced uplift and erosion in the southeast. (B) In a second stage of the Early Pleistocene (Calabrian), the Calanna and Santa Eufemia Faults were activated to initiate uplift of the Piani d'Aspromonte High, while the Gioia and Villa basins continued subsiding. (C) During Middle Pleistocene time, initiation of the the Palmi fault led to early uplift and inversion of the Gioia and Villa basins; the Solano and Reggio Calabria faults also were activated at this time. (D) In Late Pleistocene time, activation of the Scilla fault zone caused depocentres to migrate into their present location during continued uplift of the Piani d'Aspromonte High. CAPF = Cappuccini fault; CAF = Calanna fault; SF = Scilla fault; SOF = Solano fault; SEF = Santa Eufemia fault; PF = Palmi fault; CF = Cittanova fault; DEF = Delianuova fault; GAF = Gambarie fault; VB = Villa Basin; WAF = Western Aspromonte fault.

During early Pleistocene time (Gelasian, Fig. 9A), a first phase of uplift was controlled by slip on the Cittanova, Delianuova and Gambarie faults, producing footwall uplift and erosion in the southeast. The western Aspromonte and Montalto faults were also active, and areas NW of the Cittanova fault formed a subsiding marine realm that included the Gioia and Villa basins. In a second stage (Calabrian; Fig. 9B), the

Calanna fault was initiated, slip on the Cittanova fault likely slowed, the former marine shelf was uplifted, and the margin of the paleo-Messina Strait shifted ~5–8 km to the northwest. Biostratigraphic data show that the Calanna fault was activated ~1.7 Ma (Longhitano et al., 2012). During the middle Pleistocene (Fig. 9C), initiation of the Palmi fault led to early uplift and inversion of the Gioia basin as normal faults shifted again to the northwest. In late Pleistocene time (Fig. 9D), activation of the modern Scilla fault zone caused depocentres to shift northwest into their present location. Thus, the configuration of the modern Messina Strait rift zone was established in Late Pleistocene time (Pirrota et al., 2016).

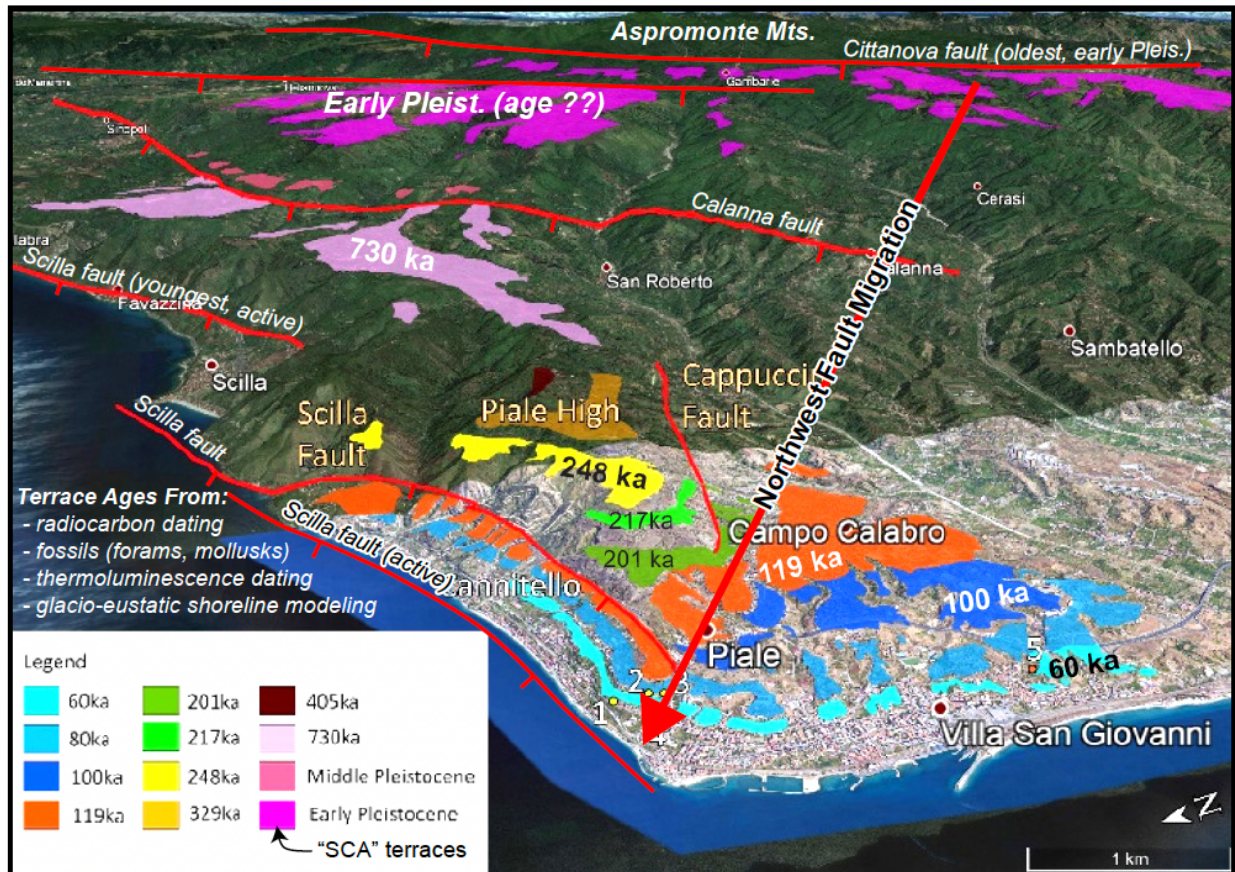


Figure 10. Flight of uplifted and faulted marine terraces in southern Calabria (modified from Antonioli et al., 2021). “SCA” terraces are Serre–Cittanova–Armo terraces, named for the faults that cut them (Roda-Boluda and Whittaker, 2017). The relative ages and elevations of faulted marine terraces suggest northwest migration of normal faults through time, but the timing of the start of this sequence is uncertain because the high SCA marine terrace (early Pleistocene) is not well dated. See text for discussion.

Figure 10 is an oblique view looking southeast at a flight of uplifted and faulted Pleistocene marine terraces in southern Calabria (Antonioli et al., 2021), providing further evidence for a history of northwest fault migration in this region. Terrace ages are estimated from radiocarbon dating, biostratigraphy, thermoluminescence dating, and glacio-eustatic shoreline modeling (Westaway, 1993; Roda-Boluda and Whittaker, 2017; Monaco et al., 2017; Antonioli et al., 2021). The timing of earliest fault motion is uncertain because the oldest Pleistocene marine terraces at elevations up to 1.2 km (named “SCA” terraces after the Serre-Cittanova-Armo faults that cut them; Roda-Boluda and Whittaker, 2017) are not well dated. Regardless of absolute age constraints, the morphology and elevation of offset marine terraces show that the relative age of the faults decreases from southeast to northwest (see also Discussion below). A history of fault migration can similarly be inferred for en-echelon normal faults east

of Messina Strait (Fig. 7A). The Armo fault, oldest in the en-echelon array, formed the southeast margin of the paleo-Messina strait during deposition of the early Pleistocene Calcareni di Vinco Formation (Longhitano, 2011, 2018b; Chiarella et al., 2021). The Reggio Calabria fault to the north is inferred to be younger than the Armo fault based on the younger age (≤ 730 ka) of marine terraces in its footwall. The northernmost faults of the en-echelon fault array are active strands of the Scilla fault zone directly adjacent to the central sill of the modern strait (Figs. 7A, 8).

In summary, fluvial geomorphology and biostratigraphic data suggest a history in which NE-striking normal faults in southwest Calabria migrated northwest into the Tyrrhenian Sea during the same period (past ca. 2.5 Myr) that initiation of faults in the en-echelon array on the east margin of Messina Strait migrated north (Figs. 9 – 11). Fault activity is currently focused at the narrow central sill of the modern strait, where normal faults display the strongest curvature in plan view and local fault strikes deviate up to $40^\circ - 45^\circ$ from the regional fault strike (Fig. 7A).

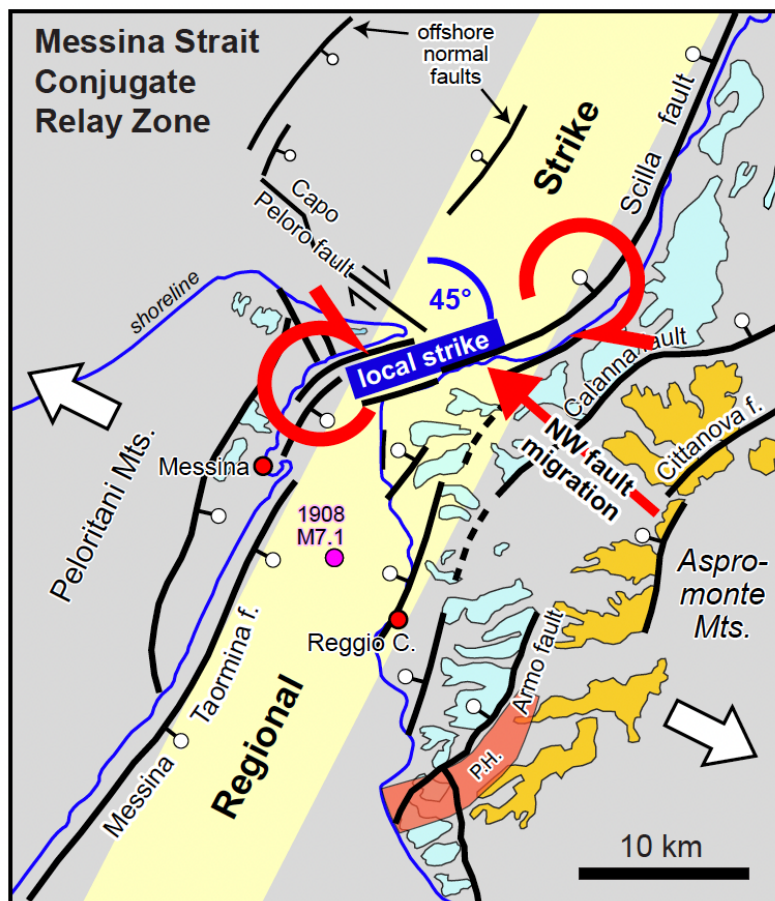


Figure 11. Proposed structural model for the Messina Strait conjugate relay zone. Strong fault curvature results from clockwise rotation in the area of active fault-tip interactions, where the strike of normal faults deviates from the regional fault strike by $\sim 40-45^\circ$. The dextral Capo Peloro fault accommodates transfer of some extensional strain from a SE-dipping offshore normal fault to northern strands of the Messina-Taormina fault system. The Pellaro paleo-high (P.H.) formed an early Pleistocene fault-bounded structural high that separated north- and south-directed tidal currents (Longhitano, 2018b), suggesting that the narrow constriction of Messina Strait has migrated north ~ 20 km in the past ~ 2.0 to 2.5 Myr.

DISCUSSION

Significance of the Conjugate Relay Zone

Based on the preceding synthesis of regional fault data, we propose a kinematic model for development of the Messina Strait conjugate relay zone (Fig. 11). As seen in other examples (Childs et al., 2019), faults in this region display a distinctive pattern of overlap and strain transfer between opposed-dipping normal faults (Figs. 4, 7). While the general pattern of facing faults has been recognized in previous studies (e.g., Catalano et al., 2003, 2008), the tectonic significance of fault geometries, strain transfer, and fault migration history has not been fully explored.

The plan-view curvature of facing normal faults in Messina Strait is observed in some but not all other extensional relay zones (Ebinger, 1989; Morley et al., 1990; Peacock and Sanderson, 1994; Acocella et al.,

2000, 2005). Deviation of local fault strike within the relay zone from regional fault strike outside the relay zone (up to 40° – 45°) overlaps the range of angular difference documented from active relay zones in Iceland, where fault curvature results from rotation of local extension direction due to interaction with adjacent faults (Acocella et al., 2000). Degree of curvature is related to extension rate and magnitude (with faster extension producing more rotation), magnitude of far-field stress, orientation of inherited basement structures if present, and fault surface roughness (Acocella et al., 2000). The NW-striking Capo Peloro strike-slip fault (Fig. 7A) is oriented favorably to act as a transfer fault (e.g., Acocella et al., 2005), but the dextral sense of offset inferred by Doglioni et al. (2012), and confirmed here, is opposite to the left-lateral offset predicted for a simple relay zone. This apparent discrepancy likely reflects the complicating influence of an offshore normal fault that accommodates some extension north of Capo Peloro (Figs. 7A, 12). The geometry of fault curvature suggests that clockwise rotation in the relay zone is related to active fault interactions. The area of strongest plan-view curvature coincides with minimum values of fault offset, footwall elevation and water depth near the tips of facing normal faults in the area of fault overlap (Figs. 5, 6). Thus, the observed fault geometries and evidence for active strain transfer between adjacent normal faults in Messina Strait are consistent with extensional conjugate relay zones worldwide (Childs et al., 2019).

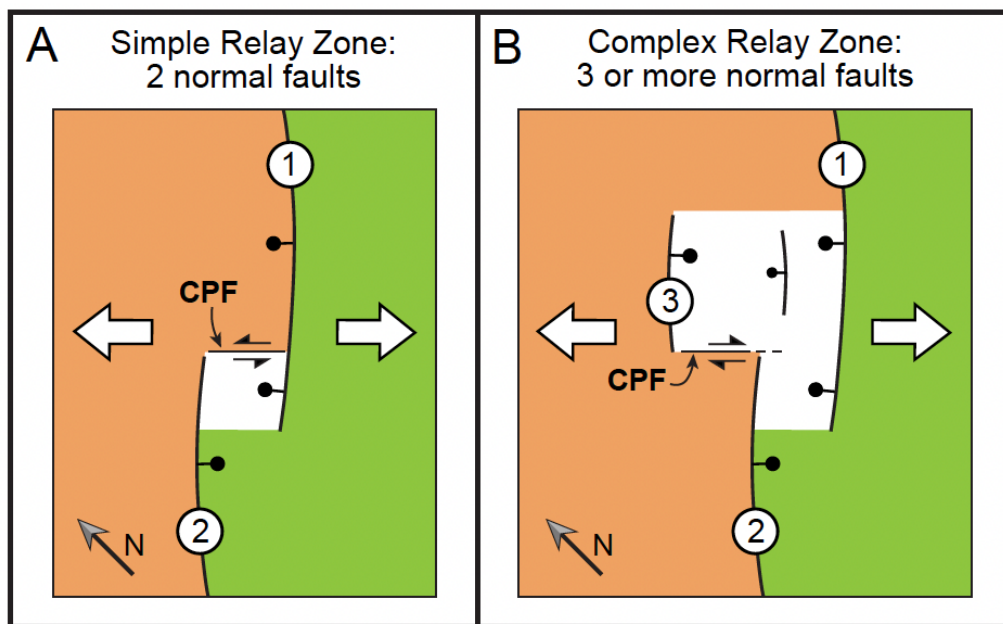


Figure 12. Hypothetical sketch maps showing kinematics of normal and strike-slip faults in a graben conjugate relay zone, to help evaluate behaviour of the Capo Peloro fault (CPF). (A) Simple relay zone with two normal faults and transfer of strain across a relatively small zone of fault overlap (white area). This geometry predicts left-lateral offset on the Capo Peloro fault. (B) Complex relay zone with three or more interacting faults and a larger area of strain transfer (white area). Fault 3 represents a SE-dipping offshore normal fault observed in sea-floor bathymetry (Fig. 7A). This geometry predicts observed right-lateral offset on the Capo Peloro fault, which acts as a kinematic link between normal faults 2 and 3.

The Messina Strait conjugate relay zone occupies a unique position within the Siculo-Calabrian Rift Zone, which accommodates regional extension in the upper plate of the Ionian subduction zone (Fig. 2). The modern Strait is maintained as a shallow marine connection by active subsidence within the relay zone that results from extension and divergence between southern Calabria and NE Sicily. This interpretation is supported by GPS data that indicate extensional opening of the Siculo-Calabrian Rift Zone at rates of 3 – 4 mm/yr (Catalano and De Guidi, 2003a; Catalano et al., 2003; Serpelloni et al., 2010; Palano

et al., 2012; Pavano et al., 2015, 2016). Some studies propose that southeastward retreat of the Ionian subduction zone and related extension stopped by ca. 2 Ma (e.g. Goes et al., 2004), but active extension across the Messina Strait suggests that rollback of the subduction zone continues today. Alternatively, extension in this region may be due to other mechanisms such as gravitational collapse or crustal block rotations (Palano et al., 2012). Rapid Pleistocene to modern uplift is attributed to slab fragmentation and related changes in mantle dynamics and isostasy (Gallen et al., 2023), which counteract the effects of extension-related crustal thinning and subsidence in many areas.

Age of Fault Initiation and Growth of Topography

The age of initiation of normal faults in southern Calabria is poorly understood due to conflicting information about the age of marine deposits in the uplifted footwalls of the faults. Some studies (Roda-Boluda and Whittaker, 2017; Quye-Sawyer et al., 2021) conclude that normal faulting and uplift of raised SCA (Serre-Cittanova-Armo) marine terraces started $\sim 1.0 \pm 0.2$ Ma, based on the presence of “northern guest” faunas that are believed to have migrated into this region ca. 1 Ma (Dumas et al., 1981, 1987; Ghisetti, 1981; Westaway, 1993; Miyauchi, 1994; Monaco et al., 1996; Catalano et al., 2008). Because footwall uplift must post-date deposition of the marine deposits, it is logical to conclude that the normal faults initiated after arrival of northern faunas. However, the timing of arrival of northern faunas in the central Mediterranean region is not well known. The start of the Pleistocene (base of Gelasian; Fig. 3) is now placed at 2.58 Ma and is recognized as the start of major northern hemisphere glaciation and global cooling (Head et al., 2008; Gibbard and Head, 2010; Cohen et al., 2013). The first arrival of northern faunas (e.g., *Arctica islandica*, *Hyalinea balthica*) due to climate deterioration is at least as old as the start of the Calabrian stage, ~ 1.7 - 1.8 Ma (Gibbard and Head, 2010; Crippa and Raineri, 2015; Crippa et al., 2019; Bizzarri and Baldanza, 2020), earlier than the widely cited age of 1.0 ± 0.2 Ma. Biostratigraphic data from Vinco Calcarenites in the hanging wall of the Armo fault record syn-tectonic deposition *during fault offset* in early Gelasian time, ca. 2.4-2.6 Ma (Barrier, 1984, 1986; Barrier et al., 1987; Guarnieri et al., 2004; Longhitano et al., 2012), and the Calanna fault was active by ca. 1.7-1.8 Ma (Longhitano et al., 2021). Thus, the age of onset of major normal faults and footwall uplift in southern Calabria is loosely bracket between ~ 1.0 and 2.6 Ma.

Two hypotheses can potentially explain conflicting published estimates for the timing of earliest extension and uplift in southern Calabria. (1) Normal faults may have initiated in early Pleistocene time (ca. 2.4-2.6 Ma) as indicated by biostratigraphic data, but with little or no uplift in their footwalls until ~ 1 Ma (widely cited age for the onset of regional uplift). This explanation is consistent with evidence that during early stages of extension, the Armo fault was a blind fault that formed a basin-facing monocline above the propagating tip of the growing fault (Chiarella et al., 2021), which may have involved slow footwall uplift. However, full suppression of footwall uplift is unusual for active normal faults, and there is abundant evidence for early Pleistocene siliciclastic input from footwalls of the faults in question (Longhitano, 2011; Longhitano et al., 2012, 2021; Rossi et al., 2017; Chiarella et al., 2021), which requires active footwall uplift and erosion. (2) Alternatively, the high SCA marine terraces may be older than ~ 1 Ma if “northern guest” faunas arrived in southern Calabria prior to 1.0 Ma. This hypothesis is supported by recognition that northern boreal faunas (e.g., *Arctica islandica*, *Hyalinea balthica*) migrated south into the central Mediterranean region during early Pleistocene time (Gibbard and Head, 2010). If the oldest SCA marine terraces are early Gelasian (~ 2.4 - 2.6 Ma), normal faults may have initiated in the southeast around that time and then migrated to the northwest (Fig. 9). The second hypothesis is challenged by studies that find northern faunas arrived in the central Mediterranean region at the start of the Calabrian stage, ~ 1.7 - 1.8 Ma (Crippa and Raineri, 2015; Crippa et al., 2019; Bizzarri and Baldanza, 2020), not early Gelasian, so this explanation cannot fully resolve the age discrepancy.

Despite existing age uncertainties, the interpretation of northward migrating faults east of the Messina Strait is consistent with evidence for northward migrating faults, erosion, and sedimentation in northeast Sicily during Middle to Late Pleistocene time (di Stefano and Longhitano, 2009). In addition,

uplifted Pleistocene marine deposits in the footwall of the Messina-Taormina fault (Fig. 7A; Lentini et al., 2000; di Stefano and Longhitano, 2009) indicate that normal faults in NE Sicily have stepped to the southeast in the past 1-2 Myr. Combined with northwest migration of normal faults in southern Calabria (Fig. 9; Pirrotta et al., 2016), this pattern indicates that the relay zone and Messina Strait have become narrower through time. Tectonic narrowing of the marine passage despite ongoing extension is likely due to rapid regional uplift (Pavano et al., 2016; Meschis et al., 2022a; 2022b; Roda-Boluda and Whittaker, 2017; Quye-Sawyer et al., 2021; Gallen et al., 2023), suggesting that mantle-driven uplift has overwhelmed and now exceeds extension-related subsidence in many areas where Pleistocene marine deposits are exposed above sea level.

CONCLUSIONS

This study identifies an active conjugate relay zone in the Messina Strait of southern Italy, where NW-SE extension results from rapid rollback and retreat of the Ionian subduction zone. The region is distinguished by a rich cultural legacy recorded in Homer's *Odyssey* (c. 8th century BC), and a modern record of major earthquakes and persistent seismic hazards. The relay zone is defined by an along-strike transfer of extensional strain from active NW-dipping normal faults in southwest Calabria to the SE-dipping Messina-Taormina normal fault offshore eastern Sicily (likely source of the 1908 M7.1 Messina earthquake). Strong curvature of facing normal faults in the active relay zone results from clockwise rotation related to ongoing fault-tip interactions. Integrated topographic and bathymetric profiles show that fault throw, footwall elevation, and water depth all decrease along strike toward the tips of facing normal faults in the area of extensional strain transfer and maximum reorientation of fault strike. The observed fault geometries and related processes exert a strong control on modern topography, seafloor bathymetry and active sedimentary processes of the Messina Strait region.

Published evidence from fluvial geomorphology and biostratigraphy shows that normal faults and footwall uplift in southern Calabria migrated northwest from early Gelasian time (ca. 2.4-2.6 Ma) to the present day, with the most active faults currently located at the modern coastline, though there is some uncertainty regarding the age of initiation of regional faulting. During the same period, basin-bounding normal faults in NE Sicily migrated southeast to the modern Messina-Taormina fault, resulting in progressive narrowing of the Strait through time. Tectonic narrowing of the marine passage despite regional extension suggests that mantle-driven uplift now exceeds extension-related subsidence in many areas. This pattern, if it continues in the geologic future, may eventually result in permanent closure of the Messina Strait.

ACKNOWLEDGMENTS

Conrad Childs, Francesco Muto, and Claudia Pirrotta are thanked for constructive critical reviews of an earlier version of this paper. Dorsey thanks the Department of Sciences at the University of Basilicata, Potenza, for welcoming her as a visiting researcher during this study. Research was supported with funds awarded to Dorsey by the University of Oregon.

REFERENCES CITED

- Acocella, V., Faccenna, C., Funicello, R., and Rossetti, F., 1999, Sand-box modelling of basement-controlled transfer zones in extensional domains: *Terra Nova*, v. 11, p. 149–156, doi:10.1046/j.1365-3121.1999.00238.x.
- Acocella, V., Gudmundsson, A., and Funicello, R., 2000, Interaction and linkage of extension fractures and normal faults: examples from the rift zone of Iceland: *Journal of Structural Geology*, v. 22, p. 1233–1246, www.elsevier.nl/locate/jstrugeo.
- Acocella, V., Morvillo, P., and Funicello, R., 2005, What controls relay ramps and transfer faults within rift zones? Insights from analogue models: *Journal of Structural Geology*, v. 27, p. 397–408, doi:10.1016/j.jsg.2004.11.006.
- Aloisi, M., Bruno, V., Cannavò, F., Ferranti, L., Mattia, M., Monaco, C., and Palano, M., 2013, Are the source models of the M 7.1 1908 Messina Straits earthquake reliable? Insights from a novel inversion and a sensitivity analysis of levelling data: *Geophysical Journal International*, v. 192, p. 1025–1041, doi:10.1093/gji/ggs062.
- Antonioli, F. et al., 2021, New evidence of mis 3 relative sea level changes from the messina strait, Calabria (Italy): *Water (Switzerland)*, v. 13, doi:10.3390/w13192647.
- Antonioli, F. et al., 2016, Timing of the emergence of the Europe-Sicily bridge (40-17 cal ka BP) and its implications for the spread of modern humans: *Geological Society Special Publication*, v. 411, p. 111–144, doi:10.1144/SP411.1.
- Antonioli, F., Ferranti, L., Lambeck, K., Kershaw, S., Verrubbi, V., and Dai Pra, G., 2006, Late Pleistocene to Holocene record of changing uplift rates in southern Calabria and northeastern Sicily (southern Italy, Central Mediterranean Sea): *Tectonophysics*, v. 422, p. 23–40, doi:10.1016/j.tecto.2006.05.003.
- Argnani, A., 2021, Comment on “New simulations and understanding of the 1908 Messina tsunami for a dual seismic and deep submarine mass failure source” by L. Schambach, S.T. Grilli, D.R. Tappin, M.D. Gangemi, G. Barbaro [Marine Geology 421 (2020) 106093]: *Marine Geology*, v. 442, doi:10.1016/j.margeo.2021.106634.
- Argnani, A., 2022, Comment on the paper by Barreca et al.: “The Strait of Messina: Seismotectonics and the source of the 1908 earthquake” [Earth-Science Reviews 218, 2021, 103685]: *Earth-Science Reviews*, v. 226, doi:10.1016/j.earscirev.2022.103961.
- Argnani, A., Brancolini, G., Bonazzi, C., Rovere, M., Accaino, F., Zgur, F., and Lodolo, E., 2009, The results of the Taormina 2006 seismic survey: Possible implications for active tectonics in the Messina Straits: *Tectonophysics*, v. 476, p. 159–169, doi:10.1016/j.tecto.2008.10.029.
- Argnani, A., and Pino, N.A., 2023, The 1908 Messina Straits Earthquake: Cornerstones and the Need to Step Forward: *Seismological Research Letters*, doi:10.1785/0220220355.
- Atzori, P., Ghisetti, F., Pezzino, A., and Vezzani, L., 1983, Carta geologica del bordo occidentale dell’Aspromonte, scale 1: 50000. :
- Barreca, G., Gross, F., Scarfi, L., Aloisi, M., Monaco, C., and Krastel, S., 2021, The Strait of Messina: Seismotectonics and the source of the 1908 earthquake: *Earth-Science Reviews*, v. 218, doi:10.1016/j.earscirev.2021.103685.
- Barrier, P., 1986, Évolution paléogéographique du détroit de Messine au Pliocène et au Pléistocène: *Giornale di Geologia*, v. 48, p. 7–24.
- Barrier, P., 1984, Evolution tectono-sédimentaire pliocène et pléistocène du Déroit de Messine (Italie) [Ph.D. Dissertation]: Aix-Marseille University, 270 p.
- Barrier, P., Alo, I.T., Geronimo, D.I., and Lanzafame, G., 1986, Rapparti fra tettonica e sedimentazione nell’evoluzione recente dell’Aspromonte occidentale (Calabria): *Rivista italiana di paleontologia e stratigrafia*, v. 9, p. 537–556.

- Barrier, P., Casale, V., Costa, B., di Geronimo, I., Oliveri, O., and Rosso, A., 1987, La sezione plio-pleistocenica di Pavigliana (Reggio Calabria).: *Bollettino della Società Paleontologica Italiana*, v. 25, p. 107–144.
- del Ben, A., Barnaba, C., and Taboga, A., 2008, Strike-slip systems as the main tectonic features in the Plio-Quaternary kinematics of the Calabrian Arc: *Marine Geophysical Research*, v. 29, p. 1–12, doi:10.1007/s11001-007-9041-6.
- Billi, A., Funicello, R., Minelli, L., Faccenna, C., Neri, G., Orecchio, B., and Presti, D., 2008, On the cause of the 1908 Messina tsunamis, southern Italy: *Geophysical Research Letters*, v. 35, doi:10.1029/2008GL033251.
- Bizzarri, R., and Baldanza, A., 2020, Integrated stratigraphy of the marine early pleistocene in umbria: *Geosciences (Switzerland)*, v. 10, p. 1–25, doi:10.3390/geosciences10090371.
- Bonardi, G., Cavazza, W., Perrone, V., and Rossi, S., 2001, Calabria-Peloritani terrane and northern Ionian Sea, *in* Vai, G.B. and Martini, I.P. eds., *Anatomy of an orogen: The Apennines and adjacent Mediterranean basins*, Kluwer Academic Publishers, p. 287–306.
- Boschi, E., Pantosti, D., and Valensise, G., 1989, Modello di sorgente per il terremoto di Messina del 1908 ed evoluzione recente dell'area dello Stretto, *in* Atti VIII Convegno G. N.G.T.S., Roma, p. 245–258.
- Brandt, P., Rubino, A., Quadfasel, D., Alpers, W., Sellschopp, J., and Fiekas, H.-V., 1999, Evidence for the Influence of Atlantic–Ionian Stream Fluctuations on the Tidally Induced Internal Dynamics in the Strait of Messina: *Journal of Physical Oceanography*, v. 29, p. 1071–1080, doi:10.1175/1520-0485(1999)029<1071:EFTIOA>2.0.CO;2.
- Brutto, F., Muto, F., Loreto, M.F., Paola, N. de, Tripodi, V., Critelli, S., and Facchin, L., 2016, The Neogene-Quaternary geodynamic evolution of the central Calabrian Arc: A case study from the western Catanzaro Trough basin: *Journal of Geodynamics*, v. 102, p. 95–114, doi:10.1016/j.jog.2016.09.002.
- Catalano, S., and De Guidi, G., 2003a, Late Quaternary uplift of northeastern Sicily: Relation with the active normal faulting deformation: *Journal of Geodynamics*, v. 36, p. 445–467, doi:10.1016/S0264-3707(02)00035-2.
- Catalano, S., and De Guidi, G., 2003b, Late Quaternary uplift of northeastern Sicily: Relation with the active normal faulting deformation: *Journal of Geodynamics*, v. 36, p. 445–467, doi:10.1016/S0264-3707(02)00035-2.
- Catalano, S., De Guidi, G., Monaco, C., Tortorici, G., and Tortorici, L., 2008, Active faulting and seismicity along the Siculo-Calabrian Rift Zone (Southern Italy): *Tectonophysics*, v. 453, p. 177–192, doi:10.1016/j.tecto.2007.05.008.
- Catalano, S., de Guidi, G., Monaco, C., Tortorici, G., and Tortorici, L., 2003, Long-term behaviour of the late Quaternary normal faults in the Straits of Messina area (Calabrian arc): structural and morphological constraints: *Quaternary International*, v. 101–102, p. 81–91.
- Cavazza, W., Blenkinsop, J., DeCelles, P.G., Patterson, R.T., and Reinhardt, E.G., 1997, Stratigraphie et sédimentologie de la séquence sédimentaire Oligocénico-Quaternaire du bassin Calabro Ionien: *Bollettino della Società Geologica Italiana*, v. 116, p. 51–77.
- Cavazza, W., and Ingersoll, R. v., 2005, Detrital modes of the Ionian forearc basin fill (oligocene-quaternary) reflect the tectonic evolution of the Calabria-Peloritani terrane (Southern Italy): *Journal of Sedimentary Research*, v. 75, p. 268–279, doi:10.2110/jsr.2005.020.
- Chiarella, D., Capella, W., Longhitano, S.G., and Muto, F., 2021, Fault-controlled base-of-scarp deposits: *Basin Research*, v. 33, p. 1056–1075, doi:10.1111/bre.12505.
- Chiarella, D., and Hernández-Molina, F.J., 2021, Go with the flow: the role of gateway and straits on plastic distribution: *Geology Today*, v. 37, p. 66–69, doi:10.1111/gto.12345.
- Chiarella, D., and Longhitano, S.G., 2012, Distinguishing depositional environments in shallow-water mixed, bio-siliciclastic deposits on the basis of the degree of heterolithic segregation (Gelasian, southern Italy): *Journal of Sedimentary Research*, v. 82, p. 969–990, doi:10.2110/jsr.2012.78.

- Childs, C., Watterson, J., and Walsh, J.J., 1995, Fault overlap zones within developing normal fault systems: *Journal of the Geological Society*, v. 152, p. 535–549, <https://www.lyellcollection.org>.
- Childs, C., Worthington, R.P., Walsh, J.J., and Roche, V., 2019, Conjugate relay zones: geometry of displacement transfer between opposed-dipping normal faults: *Journal of Structural Geology*, v. 118, p. 377–390, doi:10.1016/j.jsg.2018.11.007.
- Cirrincone, R., Fazio, E., Fiannacca, P., Ortolano, G., Pezzino, A., and Punturo, R., 2015, The Calabria-Peloritani Orogen, a composite terrane in Central Mediterranean; Its overall architecture and geodynamic significance for a pre-Alpine scenario around the Tethyan basin: *Periodico di Mineralogia*, v. 84, doi:10.2451/2015PM0446.
- Civile, D., Zecchin, M., Tosi, L., da Lio, C., Muto, F., Sandron, D., Affatato, A., Accettella, D., and Mangano, G., 2022, The Petilia-Sosti Shear Zone (Calabrian Arc, southern Italy): An onshore-offshore regional active structure: *Marine and Petroleum Geology*, v. 141, doi:10.1016/j.marpetgeo.2022.105693.
- Cohen, K.M., Finney, S.C., Gibbard, P.L., and Fan, J.-X., 2013, The ICS International Chronostratigraphic Chart: Episodes, v. 36, p. 199–204, <http://www.stratigraphy.org>.
- Crippa, G., Azzarone, M., Bottini, C., Crespi, S., Felletti, F., Marini, M., Petrizzo, M.R., Scarponi, D., Raffi, S., and Raineri, G., 2019, Bio-and lithostratigraphy of lower Pleistocene marine successions in western Emilia (Italy) and their implications for the first occurrence of *Arctica islandica* in the Mediterranean Sea: *Quaternary Research (United States)*, v. 92, p. 549–569, doi:10.1017/qua.2019.20.
- Crippa, G., and Raineri, G., 2015, The genera *Glycymeris*, *Aequipecten* and *Arctica*, and associated mollusk fauna of the Lower Pleistocene Arda River section (northern Italy): *Rivista Italiana di Paleontologia e Stratigrafia (Research in Paleontology and Stratigraphy)*, v. 121, p. 61–101.
- Critelli, S., and Martín-Martín, M., 2022, Provenance, paleogeographic and paleotectonic interpretations of Oligocene-Lower Miocene sandstones of the western-central Mediterranean region: A review: *Journal of Asian Earth Sciences: X*, v. 8, doi:10.1016/j.jaesx.2022.100124.
- Critelli, S., Muto, F., Perri, F., and Tripodi, V., 2017, Interpreting provenance relations from sandstone detrital modes, southern Italy foreland region: Stratigraphic record of the Miocene tectonic evolution: *Marine and Petroleum Geology*, v. 87, p. 47–59, doi:10.1016/j.marpetgeo.2017.01.026.
- Critelli, S., Muto, F., and Tripodi, V., 2016, Note illustrative della Carta Geologica D'Italia alla scala 1: 50.000 foglio 590 Taurianova; https://www.isprambiente.gov.it/Media/carg/note_illustrative/590_Taurianova.pdf.
- Dalrymple, R.W., 2023, A review of the morphology, physical processes and deposits of modern straits: Geological Society, London, Special Publications, v. 523, doi:10.1144/SP523-2021-76.
- Defant, A., 1940, Scilla e Cariddi e le correnti di marea nello Stretto di Messina: *Geofisica Pura e Applicata*, v. 2, p. 93–112, doi:10.1007/BF01992625.
- Van Dijk, J.P. et al., 2000, A regional structural model for the northern sector of the Calabrian Arc (southern Italy): *Tectonophysics*, v. 324, p. 267–320, doi:10.1016/S0040-1951(00)00139-6.
- Doglioni, C. et al., 2012, The tectonic puzzle of the Messina area (Southern Italy): Insights from new seismic reflection data: *Scientific Reports*, v. 2, doi:10.1038/srep00970.
- Dumas, B., Gueremy, P., Lhenaff, R., and Raffy, J., 1981, Le soulèvement quaternaire de la Calabrie méridionale: *Revue de Géologie Dynamique et de Géographie Physique Paris*, v. 23, p. 27–40.
- Dumas, B., Gueremy, P., Lhenaff, R., and Raffy, J., 1987, Rates of uplift as shown by raised Quaternary shorelines in Southern Calabria (Italy): *Zeitschrift für Geomorphologie. Supplementband*, v. 63, p. 119–132.
- Ebinger, C.J., 1989, Geometric and kinematic development of border faults and accommodation zones, Kivu-Rusizi Rift, Africa: *Tectonics*, v. 8, p. 117–133, doi:10.1029/TC008i001p00117.
- Faccenna, C., Jolivet, L., Piromallo, C., and Morelli, A., 2003, Subduction and the depth of convection in the Mediterranean mantle: *Journal of Geophysical Research: Solid Earth*, v. 108, doi:10.1029/2001jb001690.

- Faccenna, C., Molin, P., Orecchio, B., Olivetti, V., Bellier, O., Funicello, F., Minelli, L., Piromallo, C., and Billi, A., 2011, Topography of the Calabria subduction zone (southern Italy): Clues for the origin of Mt. Etna: *Tectonics*, v. 30, doi:10.1029/2010TC002694.
- Faccenna, C., Piromallo, C., Crespo-Blanc, A., Jolivet, L., and Rossetti, F., 2004, Lateral slab deformation and the origin of the western Mediterranean arcs: *Tectonics*, v. 23, doi:10.1029/2002TC001488.
- Ferranti, L., Monaco, C., Morelli, D., Tonielli, R., Tortorici, L., and Badalini, M., 2008, Morphostructural setting and active faults in the Messina Strait: New evidence from marine geological data: *Rendiconti Online Societa Geologica Italiana*, v. 1, p. 86–88.
- Ferrill, D.A., and Morris, A.P., 2001, Displacement gradient and deformation in normal fault systems: *Journal of Structural Geology*, v. 23, p. 619–638, www.elsevier.nl/locate/jstrugeo.
- Fu, L., Heidarzadeh, M., Cukur, D., Chiocci, F.L., Ridente, D., Gross, F., Bialas, J., and Krastel, S., 2017, Tsunamigenic potential of a newly discovered active fault zone in the outer Messina Strait, Southern Italy: *Geophysical Research Letters*, v. 44, p. 2427–2435, doi:10.1002/2017GL072647.
- Gallais, F., Graindorge, D., Gutscher, M.A., and Klaeschen, D., 2013, Propagation of a lithospheric tear fault (STEP) through the western boundary of the Calabrian accretionary wedge offshore eastern Sicily (Southern Italy): *Tectonophysics*, v. 602, p. 141–152, doi:10.1016/j.tecto.2012.12.026.
- Gallen, S.F., Seymour, N.M., Glotzbach, C., Stockli, D.F., and O’Sullivan, P., 2023, Calabrian forearc uplift paced by slab–mantle interactions during subduction retreat: *Nature Geoscience*, v. 16, p. 513–520, doi:10.1038/s41561-023-01185-4.
- Gasparini, C., Iannaccone, G., Scandone, P., and Scarpa, R., 1982, Seismotectonics of the Calabrian arc: *Tectonophysics*, v. 84, p. 267–286, doi:10.1016/0040-1951(82)90163-9.
- Gawthorpe, R.L., and Hurst, J.M., 1993, Transfer zones in extensional basins: their structural style and influence on drainage development and stratigraphy; <http://jgs.lyellcollection.org/>.
- Ghisetti, F., 1992, Fault parameters in the Messina Strait (southern Italy) and relations with the seismogenic source: *Tectonophysics*, v. 210, p. 117–133.
- Ghisetti, F., 1981, Upper Pliocene-Pleistocene uplift rates as indicators of neotectonic pattern: an example from southern Calabria (Italy): *Zeitschrift Fur Geomorphologie*, v. 40, p. 93–118.
- Gibbard, P.L., and Head, M.J., 2010, The newly-ratified definition of the Quaternary System/Period and redefinition of the Pleistocene Series/Epoch, and comparison of proposals advanced prior to formal ratification: *Episodes Journal of International Geoscience*, v. 33, p. 152–158, <http://www.stratigraphy.org>.
- Goes, S., Jenny, S., Hollenstein, C., Kahle, H.G., and Geiger, A., 2004, A recent tectonic reorganization in the south-central Mediterranean: *Earth and Planetary Science Letters*, v. 226, p. 335–345, doi:10.1016/j.epsl.2004.07.038.
- Goswami, R., Mitchell, N.C., Argnani, A., and Brocklehurst, S.H., 2014, Geomorphology of the western Ionian Sea between Sicily and Calabria, Italy: *Geo-Marine Letters*, v. 34, p. 419–433, doi:10.1007/s00367-014-0374-2.
- Goswami, R., Mitchell, N.C., Brocklehurst, S.H., and Argnani, A., 2017, Linking subaerial erosion with submarine geomorphology in the western Ionian Sea (south of the Messina Strait), Italy: *Basin Research*, v. 29, p. 641–658, doi:10.1111/bre.12196.
- Guarnieri, P., di Stefano, A., Carbone, S., Lentini, F., and del Ben, A., 2004, A multidisciplinary approach to the reconstruction of the Quaternary evolution of the Messina Strait (including: Geological Map of the Messina Strait area, scale 1: 25.000), *in Mapping Geology of Italy (2005)*, p. 44–50.
- De Guidi, G., Catalano, S., Monaco, C., and Tortorici, L., 2003, Morphological evidence of Holocene coseismic deformation in the Taormina region (NE Sicily): *Journal of Geodynamics*, v. 36, p. 193–211, doi:10.1016/S0264-3707(03)00047-4.
- Gutscher, M.A. et al., 2017, Active tectonics of the Calabrian subduction revealed by new multi-beam bathymetric data and high-resolution seismic profiles in the Ionian Sea (Central Mediterranean): *Earth and Planetary Science Letters*, v. 461, p. 61–72, doi:10.1016/j.epsl.2016.12.020.

- Gutscher, M.A. et al., 2016, Tectonic expression of an active slab tear from high-resolution seismic and bathymetric data offshore Sicily (Ionian Sea): *Tectonics*, v. 35, p. 39–54, doi:10.1002/2015TC003898.
- Head, M.J., Gibbard, P., and Salvador, A., 2008, The Quaternary: Its character and definition: Episodes *Journal of International Geoscience*, v. 31, p. 234–238, doi:10.1029/2004PA001071.
- van Hinsbergen, D.J.J., Torsvik, T.H., Schmid, S.M., Mañenco, L.C., Maffione, M., Vissers, R.L.M., Gürer, D., and Spakman, W., 2020, Orogenic architecture of the Mediterranean region and kinematic reconstruction of its tectonic evolution since the Triassic: *Gondwana Research*, v. 81, p. 79–229, doi:10.1016/j.gr.2019.07.009.
- Imber, J., Tuckwell, G.W., Childs, C., Walsh, J.J., Manocchi, T., Heath, A.E., Bonson, C.G., and Strand, J., 2004, Three-dimensional distinct element modelling of relay growth and breaching along normal faults: *Journal of Structural Geology*, v. 26, p. 1897–1911, doi:10.1016/j.jsg.2004.02.010.
- Jacques, E., Monaco, C., Tapponnier, P., Tortorici, L., and Winter, T., 2001, Faulting and earthquake triggering during the 1783 Calabria seismic sequence: *Geophysical Journal International*, v. 147, p. 499–516, <https://academic.oup.com/gji/article/147/3/499/601343>.
- Jolivet, L., Menant, A., Roche, V., le Pourhiet, L., Maillard, A., Augier, R., do Couto, D., Gorini, C., Thimon, I., and Canva, A., 2021, Transfer zones in Mediterranean back-arc regions and tear faults: *BSGF - Earth Sciences Bulletin*, v. 192, doi:10.1051/bsgf/2021006.
- Lentini, F., Catalano, S., and Carbone, S., 2000, Geological map of Messina province (NE Sicily), scale 1:50.000.:
- Longhitano, S.G., 2013, A facies-based depositional model for ancient and modern, tectonically-confined tidal straits: *Terra Nova*, v. 25, p. 446–452, doi:10.1111/ter.12055.
- Longhitano, S.G., 2018a, Between Scylla and Charybdis (part 1): the sedimentary dynamics of the modern Messina Strait (central Mediterranean) as analogue to interpret the past: *Earth-Science Reviews*, v. 185, p. 259–287, doi:10.1016/j.earscirev.2018.06.008.
- Longhitano, S.G., 2018b, Between Scylla and Charybdis (part 2): The sedimentary dynamics of the ancient, Early Pleistocene Messina Strait (central Mediterranean) based on its modern analogue: *Earth-Science Reviews*, v. 179, p. 248–286, doi:10.1016/j.earscirev.2018.01.017.
- Longhitano, S.G., 2011, The record of tidal cycles in mixed silici-bioclastic deposits: Examples from small Plio-Pleistocene peripheral basins of the microtidal Central Mediterranean Sea: *Sedimentology*, v. 58, p. 691–719, doi:10.1111/j.1365-3091.2010.01179.x.
- Longhitano, S.G., and Chiarella, D., 2020, Tidal straits: Basic criteria for recognizing ancient systems from the rock record: *BV*, 365–415 p., doi:10.1016/B978-0-444-64134-2.00014-6.
- Longhitano, S.G., Chiarella, D., Gugliotta, M., and Ventra, D., 2021, Coarse-grained deltas approaching shallow-water canyon heads: A case study from the Lower Pleistocene Messina Strait, Southern Italy: *Sedimentology*, v. 68, p. 2523–2562, doi:10.1111/sed.12866.
- Longhitano, S.G., Chiarella, D., and Muto, F., 2014, Three-dimensional to two-dimensional cross-strata transition in the lower Pleistocene Catanzaro tidal strait transgressive succession (southern Italy): *Sedimentology*, v. 61, p. 2136–2171, doi:10.1111/sed.12138.
- Longhitano, S.G., Chiarella, D., Di Stefano, A., Messina, C., Sabato, L., and Tropeano, M., 2012, Tidal signatures in Neogene to Quaternary mixed deposits of southern Italy straits and bays: *Sedimentary Geology*, v. 279, p. 74–96, doi:10.1016/j.sedgeo.2011.04.019.
- Loreto, M.F., Zitellini, N., Ranero, C.R., Palmiotto, C., and Prada, M., 2021, Extensional tectonics during the Tyrrhenian back-arc basin formation and a new morpho-tectonic map: *Basin Research*, v. 33, p. 138–158, doi:10.1111/bre.12458.
- Maesano, F.E., Tiberti, M.M., and Basili, R., 2020, Deformation and Fault Propagation at the Lateral Termination of a Subduction Zone: The Alfeo Fault System in the Calabrian Arc, Southern Italy: *Frontiers in Earth Science*, v. 8, doi:10.3389/feart.2020.00107.

- Martorelli, E., Casalbore, D., Falcini, F., Bosman, A., Falese, F.G., and Chiocci, F.L., 2023, Large- and medium-scale morphosedimentary features of the Messina Strait: insights into bottom-current-controlled sedimentation and interaction with downslope processes: Geological Society, London, Special Publications, v. 523, doi:10.1144/sp523-2021-77.
- McClay, K.R., Dooley, T., Whitehouse, P., Mills, M., Dooley, T., and Whitehouse, P., 2002, 4-D evolution of rift systems: Insights from scaled physical models: Gibbs.
- Meschis, M., Roberts, G.P., Mildon, Z.K., Robertson, J., Michetti, A.M., and Faure Walker, J.P., 2019, Slip on a mapped normal fault for the 28 th December 1908 Messina earthquake (Mw 7.1) in Italy: Scientific Reports, v. 9, doi:10.1038/s41598-019-42915-2.
- Meschis, M., Roberts, G.P., Robertson, J., Mildon, Z.K., Sahy, D., Goswami, R., Sgambato, C., Walker, J.F., Michetti, A.M., and Iezzi, F., 2022a, Out of phase Quaternary uplift-rate changes reveal normal fault interaction, implied by deformed marine palaeoshorelines: Geomorphology, v. 416, doi:10.1016/j.geomorph.2022.108432.
- Meschis, M., Teza, G., Serpelloni, E., Elia, L., Lattanzi, G., di Donato, M., and Castellaro, S., 2022b, Refining Rates of Active Crustal Deformation in the Upper Plate of Subduction Zones, Implied by Geological and Geodetic Data: The E-Dipping West Crati Fault, Southern Italy: Remote Sensing, v. 14, doi:10.3390/rs14215303.
- Miyauchi, T., 1994, Geochronology of Pleistocene marine terraces and regional tectonics in the Tyrrhenian coast of South Calabria: Il Quaternario, v. 7, p. 17–34.
- Monaco, C., Barreca, G., and Di Stefano, A., 2017, Quaternary marine terraces and fault activity in the northern mainland sectors of the Messina Strait (southern Italy): Italian Journal of Geosciences, v. 136, p. 337–346, doi:10.3301/IJG.2016.10.
- Monaco, C., Tapponnier, P., Tortorici, L., and Gillot', P.Y., 1997, Late Quaternary slip rates on the Acireale-Piedimonte normal faults and tectonic origin of Mt. Etna (Sicily):
- Monaco, C., and Tortorici, L., 2000, Active faulting in the Calabrian arc and eastern Sicily.:
- Monaco, C., Tortorici, L., Nicolich, R., Cemobori, L., and Costa, M., 1996, From collisional to rifted basins: an example from the southern Calabrian arc (Italy).:
- Montenat, C., Barrier, P., and Ott D'estevou, P., 1991, Some aspects of the recent tectonics in the Strait of Messina, Italy: Tectonophysics, v. 194, p. 203–215.
- Morley, C.K., 1995, Developments in the structural geology of rifts over the last decade and their impact on hydrocarbon exploration: Geological Society Special Publication, v. 80, p. 1–32, <https://www.lyellcollection.org>.
- Morley, C.K., Nelson, R.A., Patton, T.L., and Munn, S.G., 1990, Transfer zones in the East African Rift System and their relevance to hydrocarbon exploration in rifts: AAPG Bulletin, v. 74, p. 1234–1253, <https://www.researchgate.net/publication/248149866>.
- Palano, M., Ferranti, L., Monaco, C., Mattia, M., Aloisi, M., Bruno, V., Cannav, F., and Siligato, G., 2012, GPS velocity and strain fields in Sicily and southern Calabria, Italy: Updated geodetic constraints on tectonic block interaction in the central Mediterranean: Journal of Geophysical Research: Solid Earth, v. 117, doi:10.1029/2012JB009254.
- Palano, M., Piromallo, C., and Chiarabba, C., 2017, Surface imprint of toroidal flow at retreating slab edges: The first geodetic evidence in the Calabrian subduction system: Geophysical Research Letters, v. 44, p. 845–853, doi:10.1002/2016GL071452.
- Palano, M., Schiavone, D., Loddo, M., Neri, M., Presti, D., Quarto, R., Totaro, C., and Neri, G., 2015, Active upper crust deformation pattern along the southern edge of the Tyrrhenian subduction zone (NE Sicily): Insights from a multidisciplinary approach: Tectonophysics, v. 657, p. 205–218, doi:10.1016/j.tecto.2015.07.005.
- Pavano, F., Pazzaglia, F.J., and Catalano, S., 2016, Knickpoints as geomorphic markers of active tectonics: A case study from northeastern Sicily (southern Italy): Lithosphere, v. 8, p. 633–648, doi:10.1130/L577.1.

- Pavano, F., Romagnoli, G., Tortorici, G., and Catalano, S., 2015, Active tectonics along the Nebrodi-Peloritani boundary in northeastern Sicily (Southern Italy): *Tectonophysics*, v. 659, p. 1–11, doi:10.1016/j.tecto.2015.07.024.
- Peacock, D.C., and Sanderson, D.J., 1994, Geometry and development of relay ramps in normal fault systems: *AAPG bulletin*, v. 78, p. 147–165.
- Pierdomenico, M., Casalbore, D., and Chiocci, F.L., 2019, Massive benthic litter funnelled to deep sea by flash-flood generated hyperpycnal flows: *Scientific Reports*, v. 9, doi:10.1038/s41598-019-41816-8.
- Pino, N.A., Giardini, D., and Boschi, E., 2000, The December 28, 1908, Messina Straits, southern Italy, earthquake: Waveform modeling of regional seismograms: *Journal of Geophysical Research: Solid Earth*, v. 105, p. 25473–25492, doi:10.1029/2000jb900259.
- Pino, N.A., Piatanesi, A., Valensise, G., and Boschi, E., 2009, The 28 december 1908 messina straits earthquake (Mw 7.1): A great earthquake throughout a century of seismology: *Seismological Research Letters*, v. 80, p. 243–259, doi:10.1785/gssrl.80.2.243.
- Pirrotta, C., Barbano, M.S., and Monaco, C., 2016, Evidence of active tectonics in southern Calabria (Italy) by geomorphic analysis: The examples of the Catona and Petrace rivers: *Italian Journal of Geosciences*, v. 135, p. 142–156, doi:10.3301/IJG.2015.20.
- Pirrotta, C., Barberi, G., Barreca, G., Brighenti, F., Carnemolla, F., de Guidi, G., Monaco, C., Pepe, F., and Scarfi, L., 2021, Recent activity and kinematics of the bounding faults of the catanzaro trough (Central calabria, italy): New morphotectonic, geodetic and seismological data: *Geosciences (Switzerland)*, v. 11, doi:10.3390/geosciences11100405.
- Pirrotta, C., Parrino, N., Pepe, F., Tansi, C., and Monaco, C., 2022, Geomorphological and Morphometric Analyses of the Catanzaro Trough (Central Calabrian Arc, Southern Italy): *Seismotectonic Implications: Geosciences (Switzerland)*, v. 12, doi:10.3390/geosciences12090324.
- Polonia, A., Torelli, L., Mussoni, P., Gasperini, L., Artoni, A., and Klaeschen, D., 2011, The Calabrian Arc subduction complex in the Ionian Sea: Regional architecture, active deformation, and seismic hazard: *Tectonics*, v. 30, doi:10.1029/2010TC002821.
- Presti, D., Totaro, C., Neri, G., and Orecchio, B., 2019, New earthquake data in the calabrian subduction zone, Italy, suggest revision of the presumed dynamics in the upper part of the subducting slab: *Seismological Research Letters*, v. 90, p. 1994–2004, doi:10.1785/0220190024.
- Quye-Sawyer, J., Whittaker, A.C., Roberts, G.G., and Rood, D.H., 2021, Fault Throw and Regional Uplift Histories From Drainage Analysis: *Evolution of Southern Italy: Tectonics*, v. 40, doi:10.1029/2020TC006076.
- Ridente, D., Martorelli, E., Bosman, A., and Chiocci, F.L., 2014, High-resolution morpho-bathymetric imaging of the Messina Strait (Southern Italy). New insights on the 1908 earthquake and tsunami: *Geomorphology*, v. 208, p. 149–159, doi:10.1016/j.geomorph.2013.11.021.
- Roberts, G.P., Meschis, M., Houghton, S., Underwood, C., and Briant, R.M., 2013, The implications of revised Quaternary palaeoshoreline chronologies for the rates of active extension and uplift in the upper plate of subduction zones: *Quaternary Science Reviews*, v. 78, p. 169–187, doi:10.1016/j.quascirev.2013.08.006.
- Roda-Boluda, D.C., and Whittaker, A.C., 2017, Structural and geomorphological constraints on active normal faulting and landscape evolution in Calabria, Italy: *Journal of the Geological Society*, v. 174, p. 701–720, doi:10.6084/m9.figshare.c.3689464.
- Rohais, S., Bailleul, J., Brocheray, S., Schmitz, J., Paron, P., Kezirian, F., and Barrier, P., 2021, Depositional Model for Turbidite Lobes in Complex Slope Settings Along Transform Margins: The Motta San Giovanni Formation (Miocene—Calabria, Italy): *Frontiers in Earth Science*, v. 9, p. 1–23, doi:10.3389/feart.2021.766946.
- Romagny, A., Jolivet, L., Menant, A., Bessière, E., Maillard, A., Canva, A., Gorini, C., and Augier, R., 2020, Detailed tectonic reconstructions of the Western Mediterranean region for the last 35 Ma, insights on driving mechanisms: *BSGF - Earth Sciences Bulletin*, v. 191, doi:10.1051/bsgf/2020040.

- Rosenbaum, G., and Lister, G.S., 2004, Neogene and Quaternary rollback evolution of the Tyrrhenian Sea, the Apennines, and the Sicilian Maghrebides: *Tectonics*, v. 23, doi:10.1029/2003TC001518.
- Rosenbaum, G., Lister, G.S., and Duboz, C., 2002, Reconstruction of the tectonic evolution of the western Mediterranean since the Oligocene: *Journal of the Virtual Explorer*, v. 8, doi:10.3809/jvirtex.2002.00053.
- Rosendahl, B.R., 1987, Architecture of continental rifts with special reference to East Africa: *Annual Review of Earth and Planetary Sciences*, v. 15, p. 445–503, www.annualreviews.org.
- Rossetti, F., Faccenna, C., Goffé, B., Monié, P., Argentieri, A., Funicello, R., and Mattei, M., 2001, Alpine structural and metamorphic signature of the sila piccola massif nappe stack (Calabria, Italy): Insights for the tectonic evolution of the calabrian arc: *Tectonics*, v. 20, p. 112–133, doi:10.1029/2000TC900027.
- Rossi, V.M., Longhitano, S.G., Mellere, D., Dalrymple, R.W., Steel, R.J., Chiarella, D., and Olariu, C., 2017, Interplay of tidal and fluvial processes in an early Pleistocene, delta-fed, strait margin (Calabria, Southern Italy): *Marine and Petroleum Geology*, v. 87, p. 14–30, doi:10.1016/j.marpetgeo.2017.02.021.
- Rossi, V.M., Longhitano, S.G., Olariu, C., and Chiocci, F.L., 2023, Straits and seaways: end members within the continuous spectrum of the dynamic connection between basins:, doi:10.6084/m9.figshare.c.6299324.
- Santoro, V.C., Amore, E., Cavallaro, L., and de Lauro, M., 2004, Evolution of sand waves in the Messina Strait, Italy, *in* *Ocean Dynamics*, v. 54, p. 392–398, doi:10.1007/s10236-003-0087-y.
- Scarfi, L., Barberi, G., Barreca, G., Cannavò, F., Koulakov, I., and Patanè, D., 2018, Slab narrowing in the Central Mediterranean: The Calabro-Ionian subduction zone as imaged by high resolution seismic tomography: *Scientific Reports*, v. 8, doi:10.1038/s41598-018-23543-8.
- Schambach, L., Grilli, S.T., Tappin, D.R., Gangemi, M.D., and Barbaro, G., 2020, New simulations and understanding of the 1908 Messina tsunamis for a dual seismic and deep submarine mass failure source: *Marine Geology*, v. 421, doi:10.1016/j.margeo.2019.106093.
- Serpelloni, E., Bürgmann, R., Anzidei, M., Baldi, P., Mastrolembo Ventura, B., and Boschi, E., 2010, Strain accumulation across the Messina Straits and kinematics of Sicily and Calabria from GPS data and dislocation modeling: *Earth and Planetary Science Letters*, v. 298, p. 347–360, doi:10.1016/j.epsl.2010.08.005.
- Sgroi, T., Polonia, A., Barberi, G., Billi, A., and Gasperini, L., 2021, New seismological data from the Calabrian arc reveal arc-orthogonal extension across the subduction zone: *Scientific Reports*, v. 11, doi:10.1038/s41598-020-79719-8.
- di Stefano, A., and Longhitano, S., 2009, Tectonics and sedimentation of the Lower and Middle Pleistocene mixed siliciclastic/bioclastic sedimentary successions of the Ionian Peloritani Mts (NE Sicily, Southern Italy): The onset of opening of the Messina Strait: *Central European Journal of Geosciences*, v. 1, p. 33–62, doi:10.2478/v10085-009-0002-y.
- Di Stefano, A., Longhitano, S., and Smedile, A., 2007, Sedimentation and tectonics in a steep shallow-marine depositional system: stratigraphic arrangement of the Pliocene-Pleistocene Rometta Succession (NE Sicily, Italy): *Geologica Carpathica*, v. 58, p. 71–87, <https://www.researchgate.net/publication/278782708>.
- Tansi, C., Muto, F., Critelli, S., and Iovine, G., 2007, Neogene-Quaternary strike-slip tectonics in the central Calabrian Arc (southern Italy): *Journal of Geodynamics*, v. 43, p. 393–414, doi:10.1016/j.jog.2006.10.006.
- Tortorici, G., Bianca, M., de Guidi, G., Monaco, C., and Tortorici, L., 2003, Fault activity and marine terracing in the Capo Vaticano area (southern Calabria) during the Middle-Late Quaternary.:
- Tortorici, L., Monaco, C., Tansi, C., and Cocina, O., 1995, Recent and active tectonics in the Calabrian arc (Southern Italy).:

- Tripodi, V., Gervasi, A., La Rocca, M., Lucà, F., and Muto, F., 2022, Seismotectonics of Southern Calabria Terrane (South Italy): *Journal of Mountain Science*, v. 19, p. 3148–3162, doi:10.1007/s11629-022-7354-1.
- Tripodi, V., Muto, F., Brutto, F., Perri, F., and Critelli, S., 2018, Neogene-Quaternary evolution of the forearc and backarc regions between the Serre and Aspromonte Massifs, Calabria (southern Italy): *Marine and Petroleum Geology*, v. 95, p. 328–343, doi:10.1016/j.marpetgeo.2018.03.028.
- Tripodi, V., Muto, F., and Critelli, S., 2013, Structural style and tectono-stratigraphic evolution of the Neogene-Quaternary Siderno Basin, southern Calabrian Arc, Italy: *International Geology Review*, v. 55, p. 468–481, doi:10.1080/00206814.2012.723859.
- Valensise, G., and Pantosti, D., 1992, A 125 Kyr-long geological record of seismic source repeatability: the Messina Straits (southern Italy) and the 1908 earthquake (Ms 7.5): *Terra Nova*, v. 4, p. 472–483.
- Vercelli, F., 1925, Il regime delle correnti e delle maree nello Stretto di Messina: Commissione Internazionale del Mediterraneo, Campagne della R. Nave Marsigli negli anni 1922 e 1923, 1–209 p.
- Vitale, S., and Ciarcia, S., 2013, Tectono-stratigraphic and kinematic evolution of the southern Apennines/Calabria-Peloritani Terrane system (Italy): *Tectonophysics*, v. 583, p. 164–182, doi:10.1016/j.tecto.2012.11.004.
- Viti, M., Mantovani, E., Babbucci, D., Tamburelli, C., Caggiati, M., and Riva, A., 2021, Basic role of extrusion processes in the late cenozoic evolution of the western and central mediterranean belts: *Geosciences (Switzerland)*, v. 11, doi:10.3390/geosciences11120499.
- Westaway, R., 1993, Quaternary uplift of southern Italy: *Journal of Geophysical Research*, v. 98, p. 21,741–21,772, doi:10.1029/93jb01566.
- Wortel, M.J.R., and Spakman, W., 2000, Subduction and Slab Detachment in the Mediterranean-Carpathian Region: *Science*, v. 290, p. 1910–1917, <https://www.science.org>.
- Zecchin, M., Praeg, D., Ceramicola, S., and Muto, F., 2015, Onshore to offshore correlation of regional unconformities in the Plio-Pleistocene sedimentary successions of the Calabrian Arc (central Mediterranean): *Earth-Science Reviews*, v. 142, p. 60–78, doi:10.1016/j.earscirev.2015.01.006.