

Quantitatively deciphering paleostrain from digital outcrops model and its application in the eastern Tian Shan, China[★]

Xin Wang^a, Feng Gao^{a,*}

^aState Key Laboratory for Geomechanics and Deep Underground Engineering, China University of Mining and Technology, Xuzhou 221116, China

Abstract

The knowledge of the strain/stress field evolution in time is important to seismic hazard assessment and risk mitigation, and is fundamental to the understanding of the earth dynamic system. Based on the principle that past tectonic stress should have left traces in the rocks, geologists have been trying to determine the paleostress history from evidence found in rocks for decades. Recent development of techniques for automatic extraction of fracture surfaces from digital outcrop models and estimation of historical shear deformation on rock fractures provide an efficient way of quantitatively acquiring large amount of high quality fracture/fault slip data (direction and sense of slip occurs on the fault plane) from outcrops. So unlike traditional paleostress inversion methods whose data is manually collected in the field, this high quality fracture/fault slip data provide an opportunity to develop fully automatic and quantitative methods for deciphering paleostrain. In this study, for slip on each fracture, the corresponding local strain tensor is calculated, then the local strain tensors are grouped into populations corresponding to far-field strain events and local strain events using a clustering analysis technique. The applications on outcrops in the eastern Tian Shan area give a clear picture of the paleostrain variation over space and time, and also throw light on the relationship between paleostrain, fracture development and the distribution of shear displacements in a thrusting environment.

*Code available from: <https://github.com/EricAlex/structrock>.

*Corresponding author

Email address: `ericrussell@zju.edu.cn` (Xin Wang)

Keywords:

Paleostrain; Quantitative methods; Digital outcrops model; Strain tensor; Clustering analysis; Eastern Tian Shan

1. Introduction

The deformation of the surface and subsurface of the Earth and other planetary bodies reflects past changes in local and regional stress and strain, and can be used to reconstruct past crustal movements and dynamics. Paleostress analysis is a branch of Structural Geology whose target is characterizing stress systems acting in the past from their record in deformation structures, singularly from fault–slip data (Simón, 2019), based on the principle that past tectonic stress should have left traces in the rocks (Hancock, 1985). Since the first introduction of the paleostress inversion methods by Wallace (1951) and Bott (1959), it has been developed worldwide during the last decades (e.g., Angelier, 1979; Angelier et al., 1982; Angelier, 1984, 1989, 1990; Delvaux et al., 1997; Twiss and Unruh, 1998; Kaven et al., 2011; Stipp and Tullis, 2003; Shimizu, 2008), and several thousands of paleostress reconstructions have been carried out in all tectonic settings (e.g., Hindle and Burkhard, 1999; Amrouch et al., 2010, 2011; Boutonnet et al., 2013; Arboit et al., 2015; Riller et al., 2017; Hashimoto et al., 2019). In the opinion of Simón (2019), “*perhaps no other branch of structural analysis offers such a high number of methods and is submitted to such an intense conceptual discussion*”.

However, the debate is not closed, and the critiques are mainly concerning that conventions on which the inversion methods lie do not apply in the real world. For example, in the basic assumptions for paleostress analysis (e.g., Etchecopar et al., 1981), the assumption that “*the stress state is homogeneous within the studied rock body*” ignores local stress perturbations caused by discontinuities in the rock body; the assumption that “*all fault slips are related to a single stress tensor*” ignores the fact that faults are usually the results of multiple tectonic events, hence multiple stress tensors; the assumption that “*blocks bounded by the fault planes are rigid and show no significant rotation*” ignores the fact that

strata are usually tilted; and the assumption that “*movement on each fault is independent of the other ones*” ignores the fact that faults interactions are quite common. Other researchers who recently have claimed for a cautious and critical attitude are complaining the lack of parameters for assessing the quality of the field data as well as the paleostress inversion results (e.g., [Sperner and Zweigel, 2010](#); [Hippolyte et al., 2012](#); [Lacombe, 2012](#); [Simón, 2019](#)).

Now there may be a chance to fix above problems, benefiting from recent development of techniques for automatic extraction of fracture surfaces from digital outcrop models ([Wang et al., 2017](#)) and estimation of historical shear deformation on rock fractures ([Wang et al., 2019](#)), which provide an efficient way of quantitatively acquiring large amount of high quality fracture/fault slip data from outcrops. In those methods, an extra parameter that quantifies the relative amount of slip indicators (fault striations and steps) can also serve as a measure of the quality of the fracture/fault slip data, and the great amount of high quality data gives an opportunity to get rid of those to some extent controversial assumptions.

In this paper, building upon large amount of high quality fracture/fault slip data, we propose an approach for quantitatively deciphering paleostrain from digital outcrops model. The only assumption our method adopted is that fault displacements are small with respect to fault dimensions. The slip displacement on a fault results in a strain, hence a Lagrangian strain tensor, of the local rock body that tightly encloses that fault, so we perform a clustering analysis on the principal shortening directions of these Lagrangian strain tensors to obtain the tectonic shortening directions experienced by the outcrop, both far-field and local. The applications of our method on outcrops from the eastern Tian Shan area give a clear picture of the paleostrain variation over space and time, and throw light on the relationship between paleostrain, fracture development and the distribution of shear displacements in a thrusting environment.

2. The study area and the digital outcrop datasets

The study area is located at the eastern Tian Shan, China, which is bounded by Junggar Basin in the North and Tarim Basin in the South, as shown in Fig. 1. Tian Shan is one of the prominent active mountain ranges in central Asia. It is created by two late Paleozoic suture zones (northern and southern Tian Shan suture zones) (e.g., Windley et al., 1990; Allen et al., 1993), and has been reactivated since the India-Eurasia collision in the Cenozoic (e.g., Molnar and Tapponnier, 1975; Tapponnier and Molnar, 1979), which makes it an ideal area for rock fracture system development and tectonic paleostrain researches.

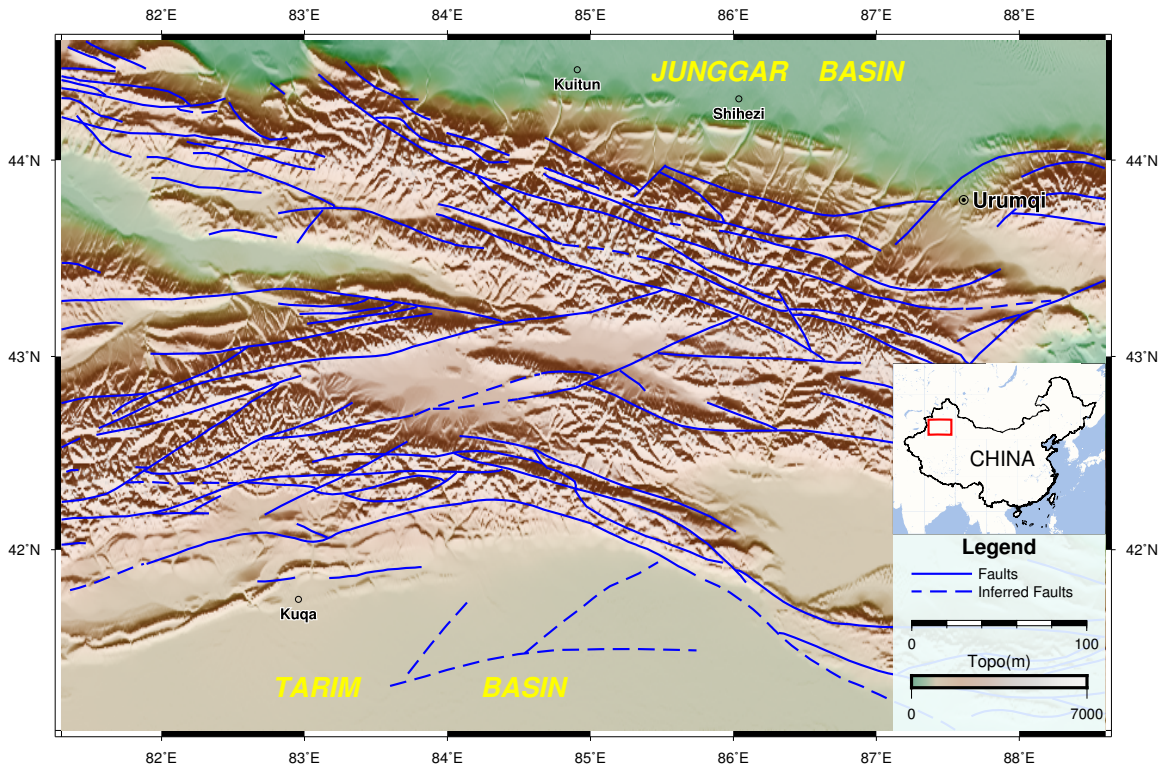


Figure 1: The study area: eastern Tian Shan, China. The faults are modified after Ma et al. (2002).

Belts of folding and thrusting is the main tectonic feature in the eastern Tian Shan area, in which the Cenozoic formations are detached from the underlying formations and form a series of EW-trending folds (e.g., Molnar et al., 1994). The Tian Shan Mountains propagated outward and rose progressively as wedge-shaped blocks (Yang et al., 2008).

The current (1992 to 2006) crustal movement velocity field presented by [Yang et al. \(2008\)](#) reveals that 80% - 90% of the N-S shortening was absorbed by young faults along the southern and northern edges, and relatively little deformation was accommodated by reactivated faults within the interior.

Seismic activities are widely recorded within the eastern Tian Shan ([Fu et al., 2003](#)). The area has recorded two large earthquakes (Atushi, $M \geq 8.2$, August 22, 1902; Manas, $M = 8.3$, December 23, 1906) and five moderate earthquake events ($M \geq 7$) during the 20th century (e.g., [Molnar and Deng, 1984](#); [Molnar and Ghose, 2000](#)). It indicates that the Tian Shan is a present active range seismically ([Ni, 1978](#)).

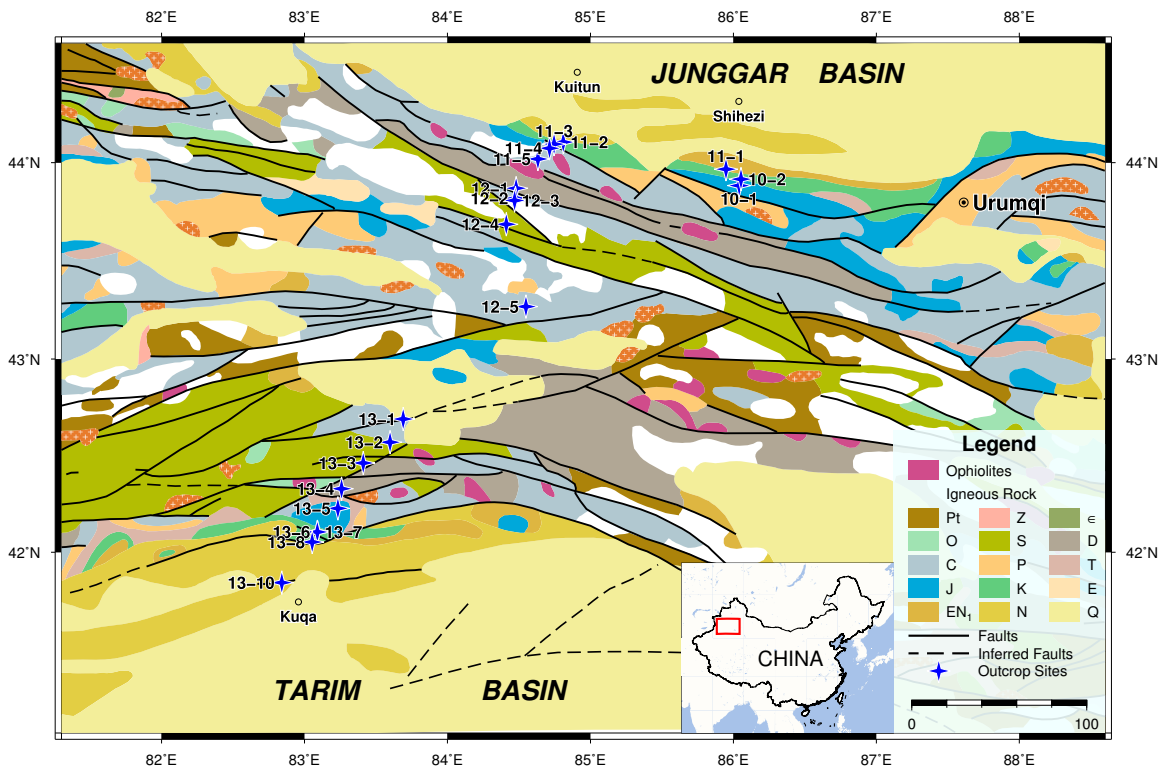


Figure 2: The geological map (modified after [Ma et al. \(2002\)](#)) of the study area. Outcrop sites where we acquired digital outcrop datasets are marked with blue quadrangular stars.

The blue quadrangular stars with black labels shown in the geological map of the study area (Fig. 2) mark locations of outcrop sites where we acquired digital outcrop datasets (point clouds). As shown in Fig. 2, apart from considering the exposure conditions of

the fracture surfaces and the spatially even distribution of the outcrop sites, we tried to choose outcrops from different stratigraphic eras whose corresponding formations are exposed in the eastern Tian Shan area, in an effort to analyze the paleostain in space and time. 21 outcrop sites were surveyed to acquire the digital outcrop datasets, and their datasets N.O., latitude, longitude, stratigraphic era and lithology are listed in Table 1.

Table 1: The digital outcrop datasets.

Datasets N.O.	Latitude	Longitude	Stratigraphic era and lithology (if available)
10-1	43.884289	86.04085	Jurassic (J)
10-2	43.916533	86.052866	Cretaceous (K), mudstone and glutenite
11-1	43.966897	85.948447	Paleogene and Miocene (E N ₁)
11-2	44.103966	84.809968	Cretaceous (K), mudstone and glutenite
11-3	44.093425	84.745368	Cretaceous (K), mudstone and glutenite
11-4	44.072486	84.713951	Carboniferous (C), purple to red conglomerate, shale and andesite
11-5	44.018645	84.633046	Carboniferous (C), purple to red conglomerate, shale and andesite
12-1	43.870517	84.480071	Devonian (D), limestone, calcareous sandstone and andesite
12-2	43.82038	84.475778	Carboniferous (C), limestone, sandstone and mudstone
12-3	43.808858	84.46986	Igneous rocks

Continued on next page

Table 1 – *Continued from previous page*

Datasets N.O.	Latitude	Longitude	Stratigraphic era and lithology (if available)
12-4	43.688214	84.411595	Silurian (S), tuff and tuffaceous conglomerate
12-5	43.26874	84.549129	Carboniferous (C), tuff, conglomerate and limestone
13-1	42.691583	83.690283	Carboniferous (C), purple to red conglomerate, shale and andesite
13-2	42.571802	83.598758	Lower and middle Silurian (S), siltstone, sandstone and gypsum layer
13-3	42.463743	83.41086	Silurian (S), tuff and tuffaceous conglomerate
13-4	42.330955	83.258927	Devonian (D), limestone, calcareous sandstone and andesite
13-5	42.228458	83.233465	Lower and middle Jurassic (J), sandstone, mudstone and coal seam
13-6	42.106226	83.090708	Cretaceous (K), mudstone and glutenite
13-7	42.105863	83.089569	Cretaceous (K), mudstone and glutenite
13-8	42.053416	83.053528	Neogene (N)
13-10	41.841483	82.840772	Neogene (N)

3. Methodology

3.1. *The fracture/fault slip data derived from digital outcrops and its quality assessment*

The fracture/fault slip data is derived from digital outcrops using method proposed by Wang et al. (2019). Basically, this method analyzes the anisotropy of the fracture surface morphology caused by slip displacement on fracture surfaces that are automatically extracted from digital outcrops (Wang et al., 2017), and then estimate the slip direction, as well as the relative amount of slip indicators (fault striations and steps). Among which, the relative amount of slip indicators may also serve as a good measure of the quality of the fracture/fault slip data, which according to Hippolyte et al. (2012), has a primary influence on the quality of the stress inversion results.

Wang et al. (2019) defined the terms “quasi striations” and “quasi steps” to refer to slip indicators who are causing similar anisotropy of the fracture surface morphology as the traditional fault striations and fault steps do, no matter they can be obviously seen on the fracture surface or not. Wang et al. (2019)’s method essentially estimates the directions and the amount of quasi striations and quasi steps: the combination of directions of quasi striations and quasi steps determine the slip direction on the fracture surface, while the quality of those estimations depends on the amount of slip indicators (quasi striations and quasi steps). How the amount of slip indicators influences the quality of the slip direction estimation, and how the amount of slip indicators can serve as an confidence index of the slip direction estimation results, are discussed below.

An experiment was designed to highlight the effects of the amount of slip indicators and to make it the only variable while other factors are kept unchanged. This can be archived by changing the point density of the point cloud covering the same fracture surface, since the amount of slip indicators a point cloud can capture decreases with decreasing point density. Also, to illustrate the quality change of the direction estimation of just one of the slip indicators, such as the quasi striations, a fracture surface with fault striations much less developed than fault steps should be chosen for this experiment, so that only the quasi striations’ direction estimation is primarily influenced by the decreas-

ing amount of slip indicators, which can be produced by reducing the point density of the point cloud. The results of this experiment are shown in Fig. 3. For a fracture surface whose fault striations are much less developed than fault steps, the point density of the point cloud changed from 2 mm to 12 mm in the estimation process of Wang et al. (2019)'s method as shown in Fig. 3a. The estimated amount of quasi striations declines as expected and when it declines to roughly 0.05, an instability in the estimation of the occurrence of quasi striations emerges as shown in Fig. 3b. Thus, the amount of quasi striations may serve as a confidence index of the quality of the occurrence estimation for quasi striations. Note that it's primarily the reduction of the amount of quasi striations that causes the occurrence estimation instability, since there isn't obvious and constant decline of the amount of quasi steps as shown in Fig. 3c, and the fact that fault striations are much less developed than fault steps in this experiment makes the estimation of quasi striations' occurrence more prone to instability. Note that the threshold of 0.05 only describes certain degree of fracture surface anisotropy below which the estimation of quasi striations' occurrence may be prone to instability, and it is not related to particular rock type or certain form of fracture surface morphology. So without loss of generality, for the amount of quasi striations, the threshold of 0.05 from this experiment may be applied in future studies in searching for reliable occurrence estimation for quasi striations.

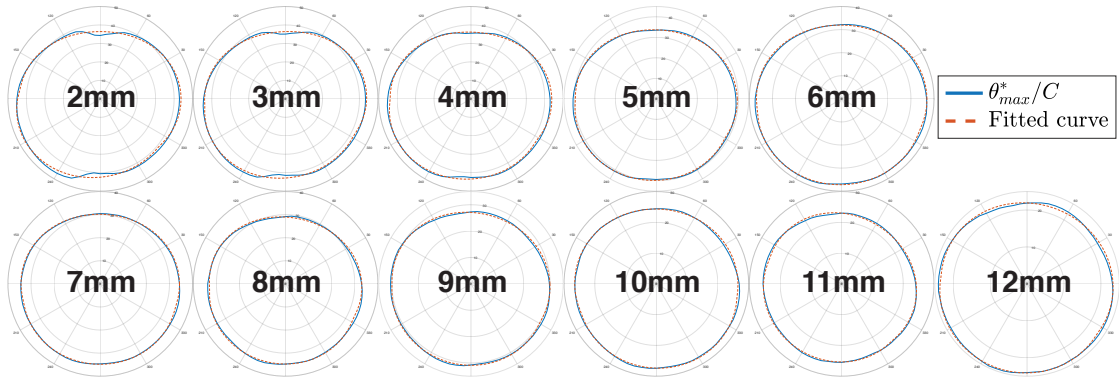
Usually the fault striations show the slip direction more consistently than the fault steps, because of the fault steps' "zigzag" shapes. But the fault striations actually show two opposite directions that are equally possible for the fault to have slipped in. So the sense of slip showed by the fault steps should also be considered to determine the exact slip direction. Let ϕ_f and $[(\phi_f + \pi) \pmod{2\pi}]$ be the two opposite slip directions that the fault striations show, and ϕ_g be the sense of slip showed by the fault steps, then the exact

slip direction ϕ_S is defined as follows:

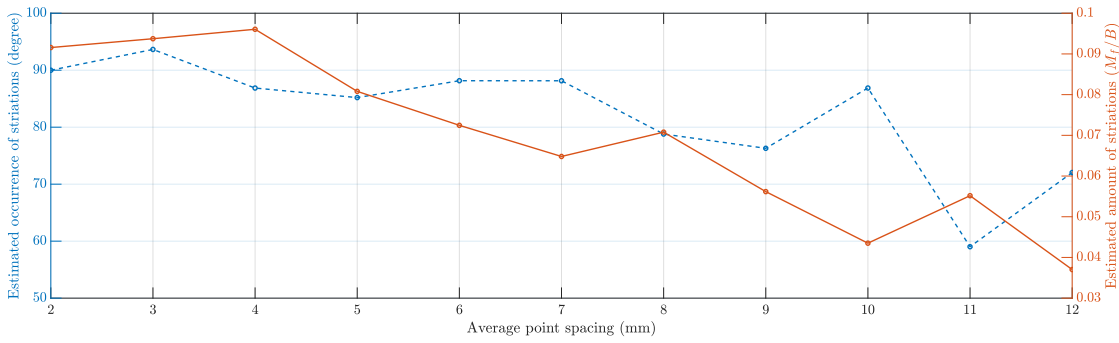
$$\phi_S = \begin{cases} \phi_f & \text{if } |\phi_f - \phi_g| < \pi/2 \\ \text{undefined} & \text{if } |\phi_f - \phi_g| = \pi/2 \\ (\phi_f + \pi) \pmod{2\pi} & \text{if } |[(\phi_f + \pi) \pmod{2\pi}] - \phi_g| < \pi/2, \end{cases} \quad (1)$$

which essentially chooses the slip direction from the two opposite slip directions with whom the sense of slip showed by the fault steps agrees more.

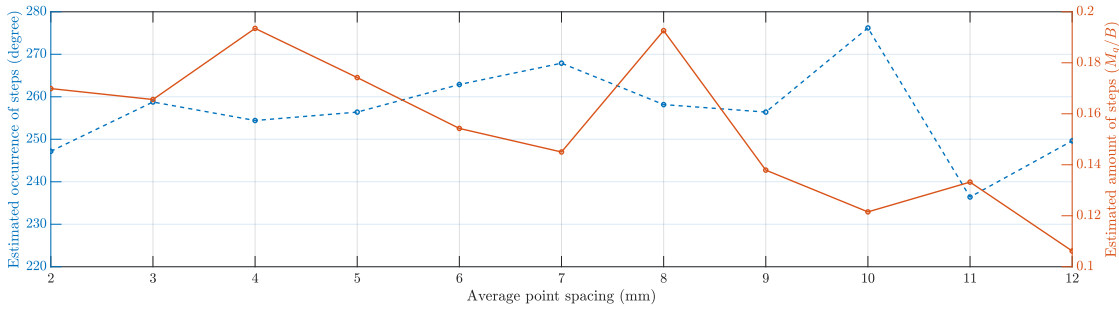
[Sagy et al. \(2007\)](#) have shown through the variations in RMS roughness, spectral shape, and 3D geometry that faults evolve with slip toward geometrical simplicity along the slip direction. This means that the degree of fault surface anisotropy is more and more enhanced with the slip. So we use the combination of the amount of quasi striations (M_f/B) and quasi steps (M_g/B), who both describe the degree of fracture surface anisotropy, to estimate the relative slip ($M_S = M_f/B + M_g/B$) on the fracture surface.



(a)



(b)



(c)

Figure 3: The experiment to highlight the effects of the amount of slip indicators. (a) For a fracture surface whose fault striations are much less developed than fault steps, the point density of the point cloud changed from 2 mm to 12 mm in the estimation process of Wang et al. (2019)'s method. (b) The estimated amount of quasi striations and the occurrence of quasi striations plotted against the point density. (c) The estimated amount of quasi steps and the occurrence of quasi steps plotted against the point density.

3.2. The Lagrangian strain tensor resulted from the slip on a fracture

The slip on the fracture surface accommodates the local strain of the rock mass which have undergone tectonic deformations, and is usually the result of one to several tectonic deformation events. If the only assumption in our method, that fault displacements are small with respect to fault dimensions, is true, as shown in Fig. 4, the small slip displacement \mathbf{u} on the fracture surface can be simplified as simple shear as illustrated by the red dashed lines. In this setting, \mathbf{e}_1 is the unit vector of axis X_1 , and the slip vector $\mathbf{u} = k\mathbf{e}_1$, i.e., there is a slip distance k along the axis X_1 ; \mathbf{e}_2 is the unit vector of axis X_2 , and also the normal vector of the fracture surface; \mathbf{e}_3 is the unit vector of axis X_3 . We use the estimated relative slip $M_S = M_f/B + M_g/B$ described in Section 3.1 to define the slip distance $k = \zeta M_S$, in which the coefficient ζ is to make sure that the slip distance k is relatively small with respect to the fracture dimension.

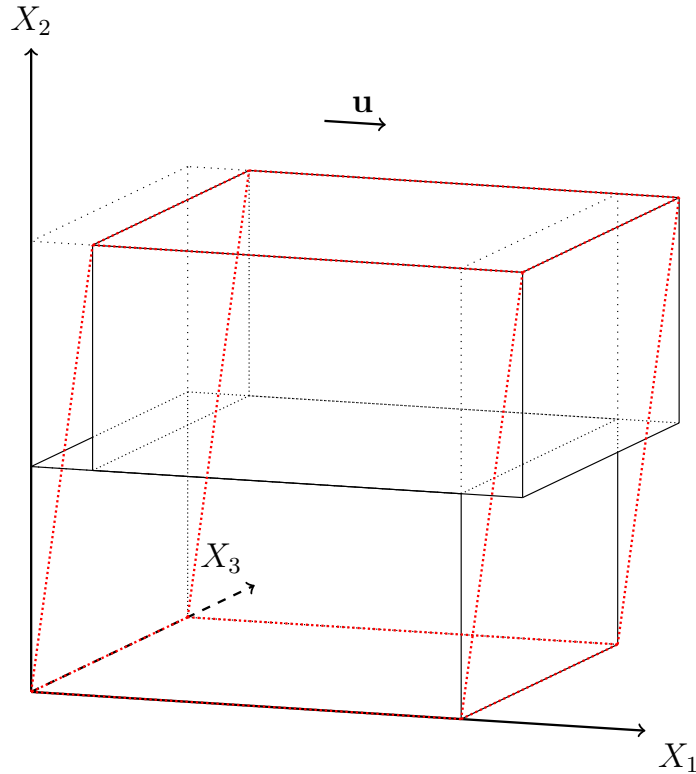


Figure 4: The illustration of a small slip displacement \mathbf{u} on the fracture surface and the simplified simple shear (red dashed lines).

In this simplified simple shear model, the displacement $\mathbf{u}(\mathbf{X})$ of the material points have components $u_1 = kX_2$, $u_2 = 0$ and $u_3 = 0$. The corresponding displacement gradient tensor with respect to the rectangular Cartesian coordinates ($\mathbf{X} = X_i\mathbf{e}_i$ and $\mathbf{u} = u_i\mathbf{e}_i$) is:

$$[\nabla\mathbf{u}] = \begin{bmatrix} 0 & k & 0 \\ 0 & 0 & 0 \\ 0 & 0 & 0 \end{bmatrix} \quad (2)$$

The Lagrangian strain tensor is:

$$\begin{aligned} \mathbf{E}^* &= \frac{1}{2}[\nabla\mathbf{u} + (\nabla\mathbf{u})^\top + (\nabla\mathbf{u})^\top(\nabla\mathbf{u})] \\ &= \begin{bmatrix} 0 & k/2 & 0 \\ k/2 & k^2/2 & 0 \\ 0 & 0 & 0 \end{bmatrix} \end{aligned} \quad (3)$$

Note that the Cartesian coordinate system used here (with standard basis $\{\mathbf{e}_1, \mathbf{e}_2, \mathbf{e}_3\}$) is unique for each fracture and suitable only for describing local deformations around the fracture, since \mathbf{e}_2 is the normal vector of the fracture surface and \mathbf{e}_1 is the slip direction on the fracture surface. We need a unified coordinate system in which we can discuss large scale tectonic deformations experienced by the rock mass or even the whole study region, for example, a coordinate system in which $\mathbf{e}'_1 = (1, 0, 0)$ points east, $\mathbf{e}'_2 = (0, 1, 0)$ points north and $\mathbf{e}'_3 = (0, 0, 1)$ points vertically up. The transformation matrix that transforms the expression of the Lagrangian strain tensor from the coordinate system with standard basis $\{\mathbf{e}_1, \mathbf{e}_2, \mathbf{e}_3\}$ to the coordinate system with standard basis $\{\mathbf{e}'_1, \mathbf{e}'_2, \mathbf{e}'_3\}$ is:

$$\mathbf{T} = \begin{bmatrix} \mathbf{e}_1 \cdot \mathbf{e}'_1 & \mathbf{e}_1 \cdot \mathbf{e}'_2 & \mathbf{e}_1 \cdot \mathbf{e}'_3 \\ \mathbf{e}_2 \cdot \mathbf{e}'_1 & \mathbf{e}_2 \cdot \mathbf{e}'_2 & \mathbf{e}_2 \cdot \mathbf{e}'_3 \\ \mathbf{e}_3 \cdot \mathbf{e}'_1 & \mathbf{e}_3 \cdot \mathbf{e}'_2 & \mathbf{e}_3 \cdot \mathbf{e}'_3 \end{bmatrix}$$

And the expression of the Lagrangian strain tensor is transformed as:

$$\mathbf{E}^{*'} = \mathbf{T}^\top \mathbf{E}^* \mathbf{T} \quad (4)$$

3.3. The clustering analysis of the principal shortening directions of the Lagrangian strain tensors

The paleostrain of the rock mass at the scale of outcrops is to some extent accommodated and hence recorded by the slip on certain groups of fractures. In one particular paleostrain event, the Lagrangian strain tensors resulted from the slip on those fractures are constrained by the characteristics of this paleostrain event and the body strain of the rock mass, and hence should tend to be similar, instead of cancelling out each other's effect on the rock mass. This enables the analysis of paleostrains experienced by the outcrop through a clustering analysis of the Lagrangian strain tensors resulted from the slip on fractures of this outcrop.

To simplify the clustering analysis, the Lagrangian strain tensor \mathbf{E}^{*} , in the coordinate system with the standard basis composed of its three principal strain directions $\{\mathbf{n}_1, \mathbf{n}_2, \mathbf{n}_3\}$, can be written in its diagonal form:

$$[\mathbf{E}^{*'}]_{\mathbf{n}_i} = \begin{bmatrix} E_1 & 0 & 0 \\ 0 & E_2 & 0 \\ 0 & 0 & E_3 \end{bmatrix} \quad (5)$$

in which E_1, E_2 and E_3 are the unit elongations along the principal directions $\mathbf{n}_1, \mathbf{n}_2$ and \mathbf{n}_3 respectively, and also the eigenvalues of \mathbf{E}^{*} , or principal strains. In the equivalent simple shear model shown as red dashed lines in Fig. 4, the principal strains are shortening, zero and elongation. Let's say $E_1 < 0, E_2 = 0$ and $E_3 > 0$, we will use the principal shortening direction \mathbf{n}_1 to do the clustering analysis since the slip on fractures is more directly associated with shortening of the rock mass in certain direction, while the principal elongation direction \mathbf{n}_3 can be used to further distinguish paleostrain events based on the results of the clustering analyses.

The clustering algorithm called density-based spatial clustering of applications with noise (DBSCAN) is used for the clustering analysis of the principal shortening directions $\{\mathbf{n}_1^i\}$. DBSCAN is one of the most common clustering algorithms and the paper that introduced it is one of the most cited data mining articles. Given a set of points in some

space, DBSCAN groups together points that are closely packed (points with many nearby neighbors), and marks outlier points that lie alone in low-density regions (whose nearest neighbors are too far away). The true conditions of the rock fractures in the nature are always more complex than we can exhaustively consider, so the methods we used to automatically extract fracture surfaces from digital outcrop models and estimate historical shear deformation on rock fractures will inevitably introduce noise to the data. A clustering algorithm that is robust to noise such as the DBSCAN algorithm is crucial to our analyses.

We need to define the “distance” or similarity between two principal shortening directions to perform the clustering analysis. For any two principal shortening directions \mathbf{n}_1^i and \mathbf{n}_1^j , $i \neq j$, the angle between them is $\theta_{ij} = \cos^{-1}[(\mathbf{n}_1^i \cdot \mathbf{n}_1^j)/(\|\mathbf{n}_1^i\| \|\mathbf{n}_1^j\|)]$, we define the distance between \mathbf{n}_1^i and \mathbf{n}_1^j as:

$$D(\mathbf{n}_1^i, \mathbf{n}_1^j) = \begin{cases} \theta_{ij} & \text{if } \theta_{ij} \leq \pi/2 \\ \pi - \theta_{ij} & \text{if } \theta_{ij} > \pi/2 \end{cases} \quad (6)$$

Two parameters are required by DBSCAN: the radius of a neighborhood with respect to some point (ϵ) and the minimum number of points required to form a dense region (minPts). They can be adjusted according to the distribution characteristics of the data.

4. Results and discussions

The digital outcrop datasets that we acquired from the eastern Tian Shan area as described in Section 2 are processed using the proposed method. The clusters of paleostain shortening directions are shown in poles plots, and their corresponding fracture surfaces, which group into populations reflecting similar shortening directions, are shown on the outcrops with different colors assigned to different clusters/groups, along with the poles plots of the corresponding fracture surfaces’ occurrences (Table 2). The clusters of paleostain shortening directions from each outcrop are also linked to the corresponding outcrop locations on the geological map, as shown in Fig. 5, in order to analyze the deciphered paleostrains in space.

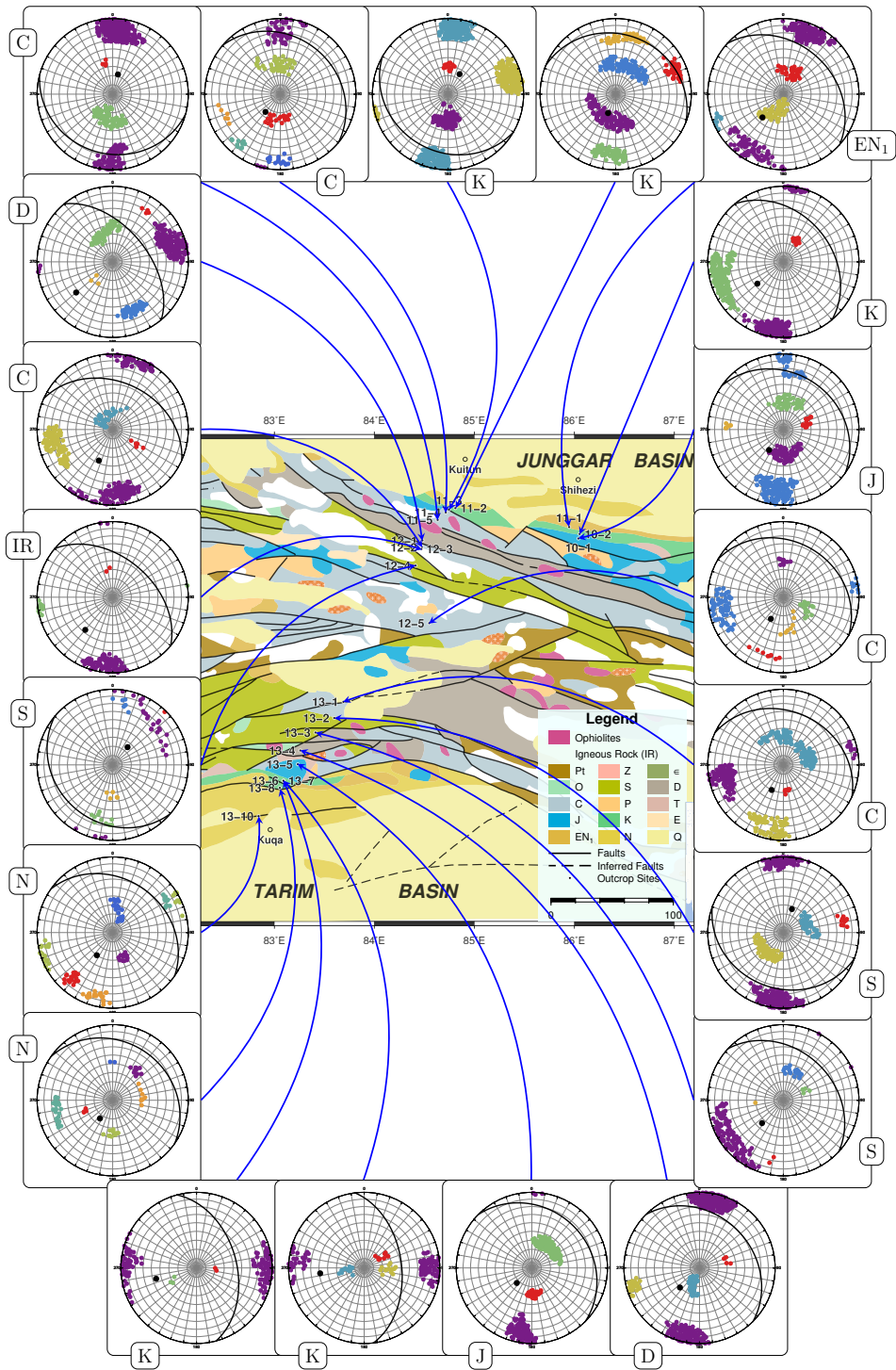


Figure 5: The clusters of paleostrain shortening directions for each outcrop and their linkage to the corresponding outcrop locations on the geological map (modified after Ma et al. (2002)). Different clusters are distinguished with different colors. The black dots (poles) and arcs represent the bedding surfaces.

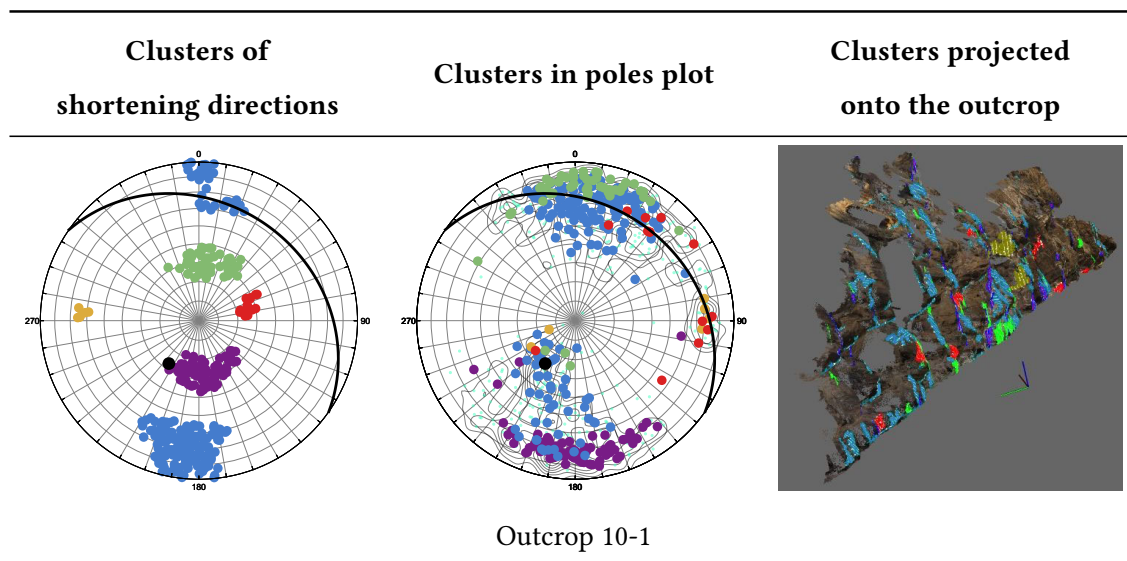
The first thing worth noting is that, for all of the outcrops, the shortening directions indicated by most of the fracture surfaces do tend to cluster into groups reflecting paleostrain events experienced by the outcrop rock mass. In addition, there seems to be some degree of consistency in the groups of shortening directions through the study region: most of the outcrops show near horizontal N-S shortening groups and near horizontal NE-SW shortening groups, which makes a fairly strong case that they are caused by far-field/regional strain events. And this can be further supported by the fact that the occurrences of their corresponding fracture surfaces are not confined by fracture surfaces of other shortening groups (e.g., 10-2, 11-3, 12-2, 12-3, 13-1 and 13-4 from Table 2), which means that they are not caused by local strain events. The current crustal movement velocity field derived from GPS measurements (e.g., [Yang et al., 2008](#)) agrees more with the near horizontal N-S shortening groups, which may imply that this is the shortening directions of the latest shortening events. The near horizontal NE-SW shortening groups may be caused by older shortening events. The occurrences of the tilted bedding surfaces from those outcrops (black arcs in the poles plots) also suggest that they are not tilted just because of the latest shortening events, older shortening events must have occurred. The change of shortening directions over time through the study region from NE-SW to N-S may have left some clues on outcrop 11-4 and 13-10.

The poles plots of the shortening groups' corresponding fracture surfaces show that both the NE-SW and the N-S shortening events are accommodated by slip on fracture surfaces whose strikes are roughly perpendicular to the shortening directions, which is consistent with the knowledge that thrusting is one of the main tectonic features in the eastern Tian Shan area. From Table 2 we can also see that both the NE-SW and the N-S shortening events use the slips on existing discontinuities like bedding surfaces to accomplish the shortening (e.g., outcrop 10-1, 10-2, 11-3, 12-2, 13-3 and 13-4), even when the strikes of the existing discontinuities are not optimal for (perpendicular to) the shortening directions (e.g., outcrop 10-2, 11-3 and 13-4). And this may be more energy efficient than creating new fractures to accommodate the shortening.

The high angle shortening groups near the center of the shortening directions poles plots seem to be correlated with one of the horizontal (regional) shortening groups. They seem to be caused by local strains and confined by the regional strains, which can be clearly seen from outcrop 10-1, 11-1, 11-4, 11-5, 13-4 and 13-10 in Table 2 that fracture surfaces corresponding to the high angle shortening groups are confined between fracture surfaces corresponding to the regional shortening groups. A model like the Riedel shear structures may be suitable to describe the regional-local strain relationships here.

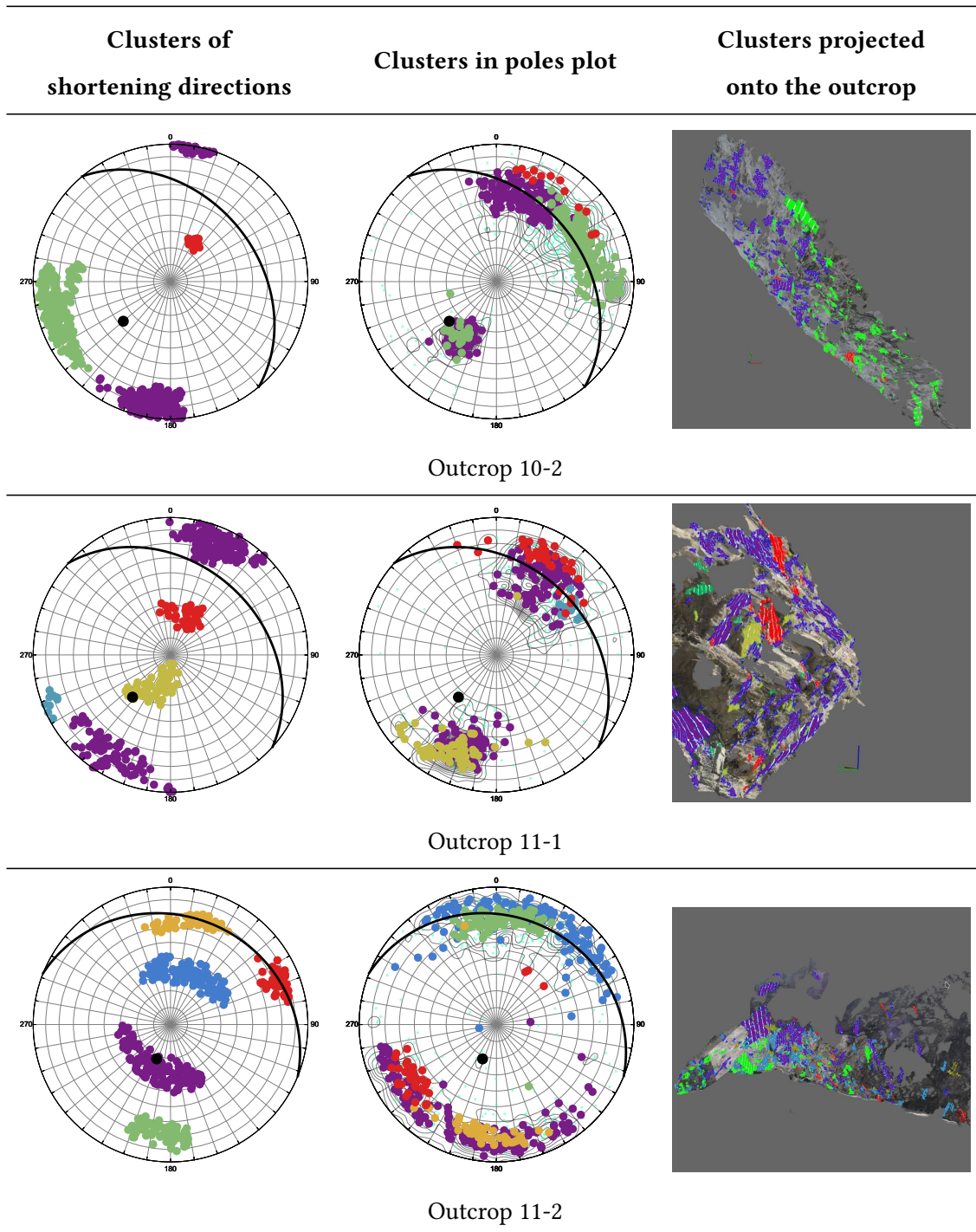
The last thing worth noting is that, for each outcrop, the estimated relative slip M_S on the fracture surfaces can be very well fitted by a Weibull distribution (see outcrop 11-3, 12-1, 13-2 and 13-5 in Fig. 6 for example). This may be ascribed to the variations in local strength which can also be described by a Weibull distribution. The parameters of the Weibull distribution of M_S may be related to the energy needed to make slip displacements on those fracture surfaces. Further researches are needed on this subject.

Table 2: The clusters of paleostain shortening directions in poles plots, the poles plots of the corresponding fracture surfaces' occurrences and the corresponding fracture surfaces projected onto the outcrops with different colors assigned to different clusters.



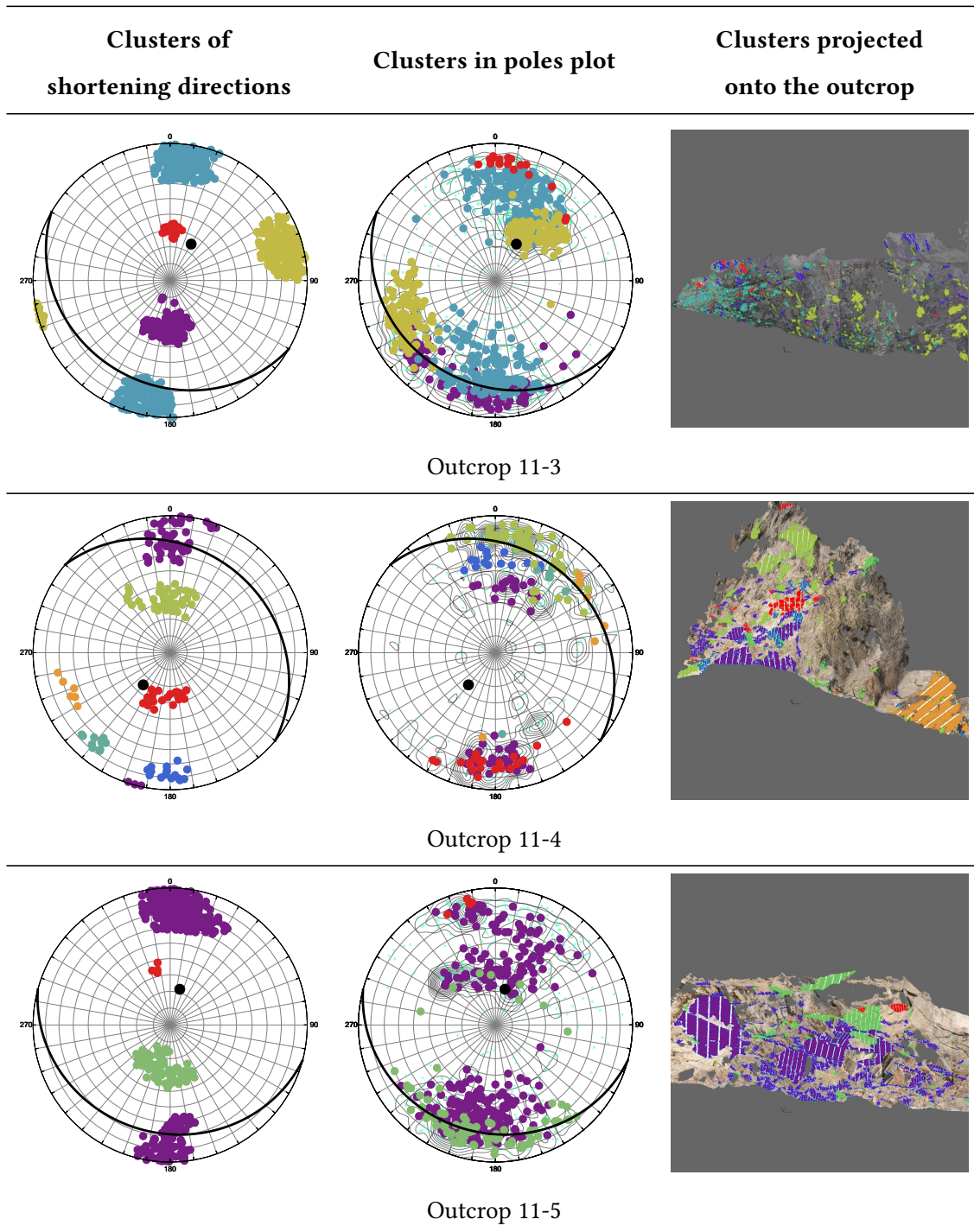
Continued on next page

Table 2 – Continued from previous page



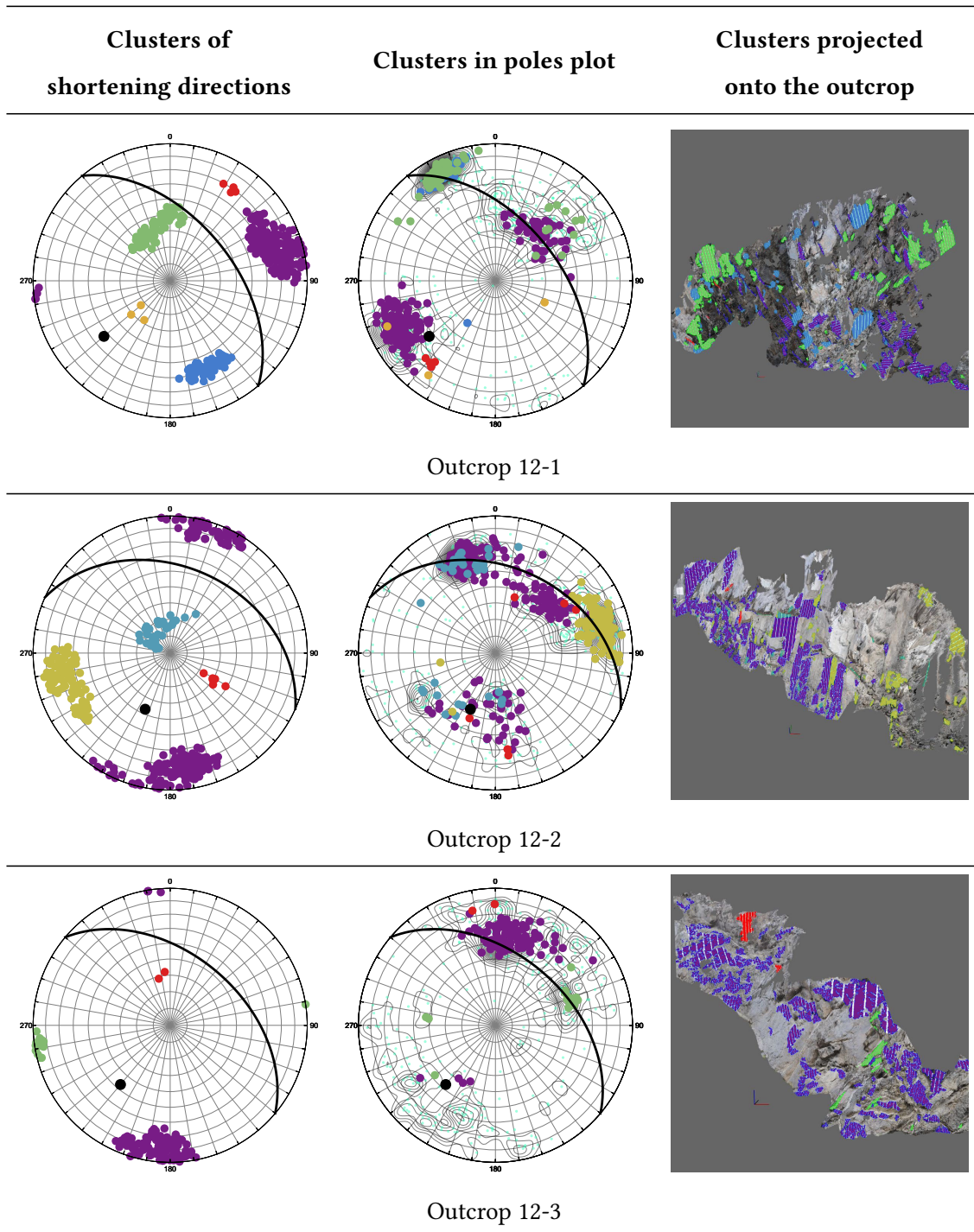
Continued on next page

Table 2 – Continued from previous page



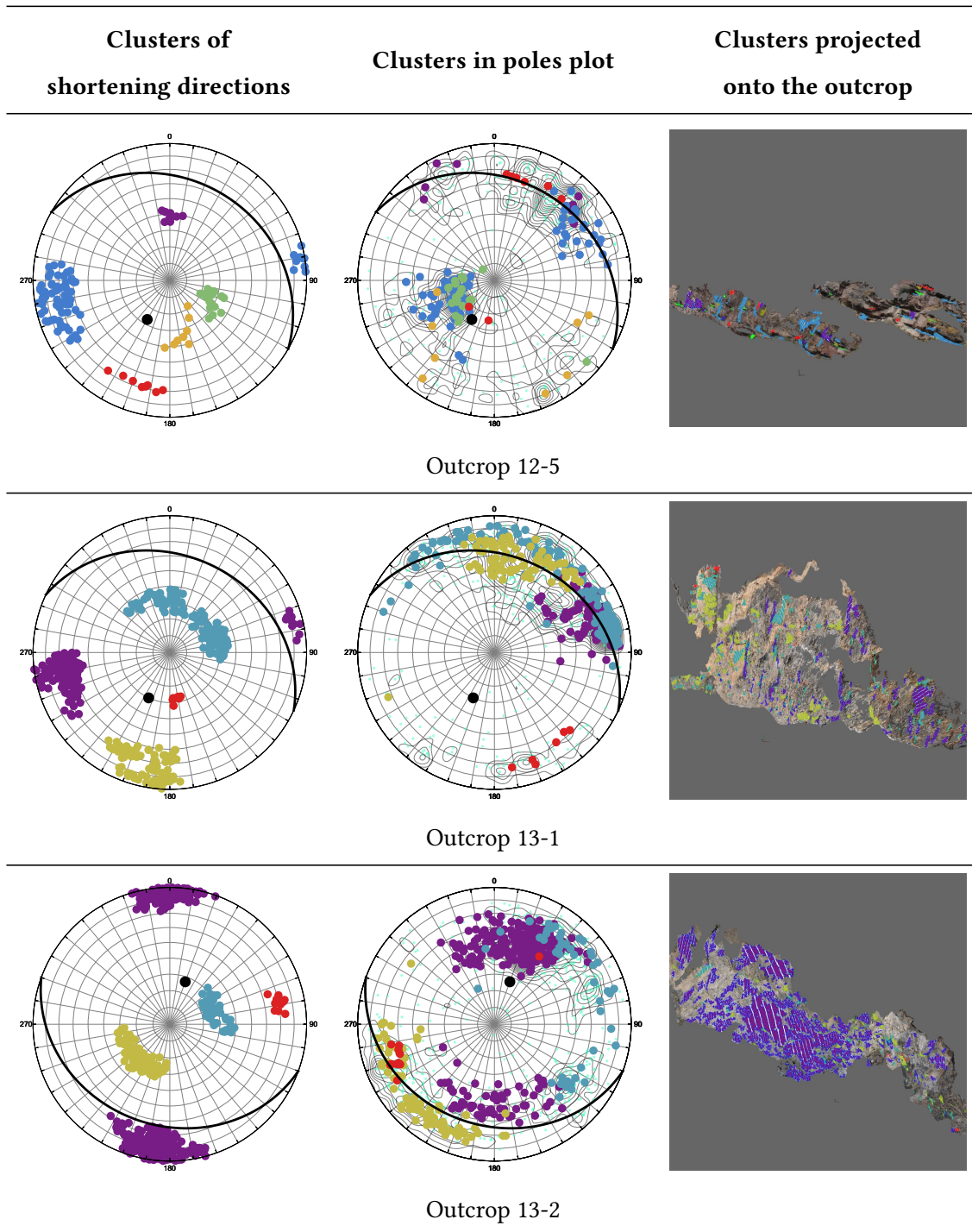
Continued on next page

Table 2 – Continued from previous page



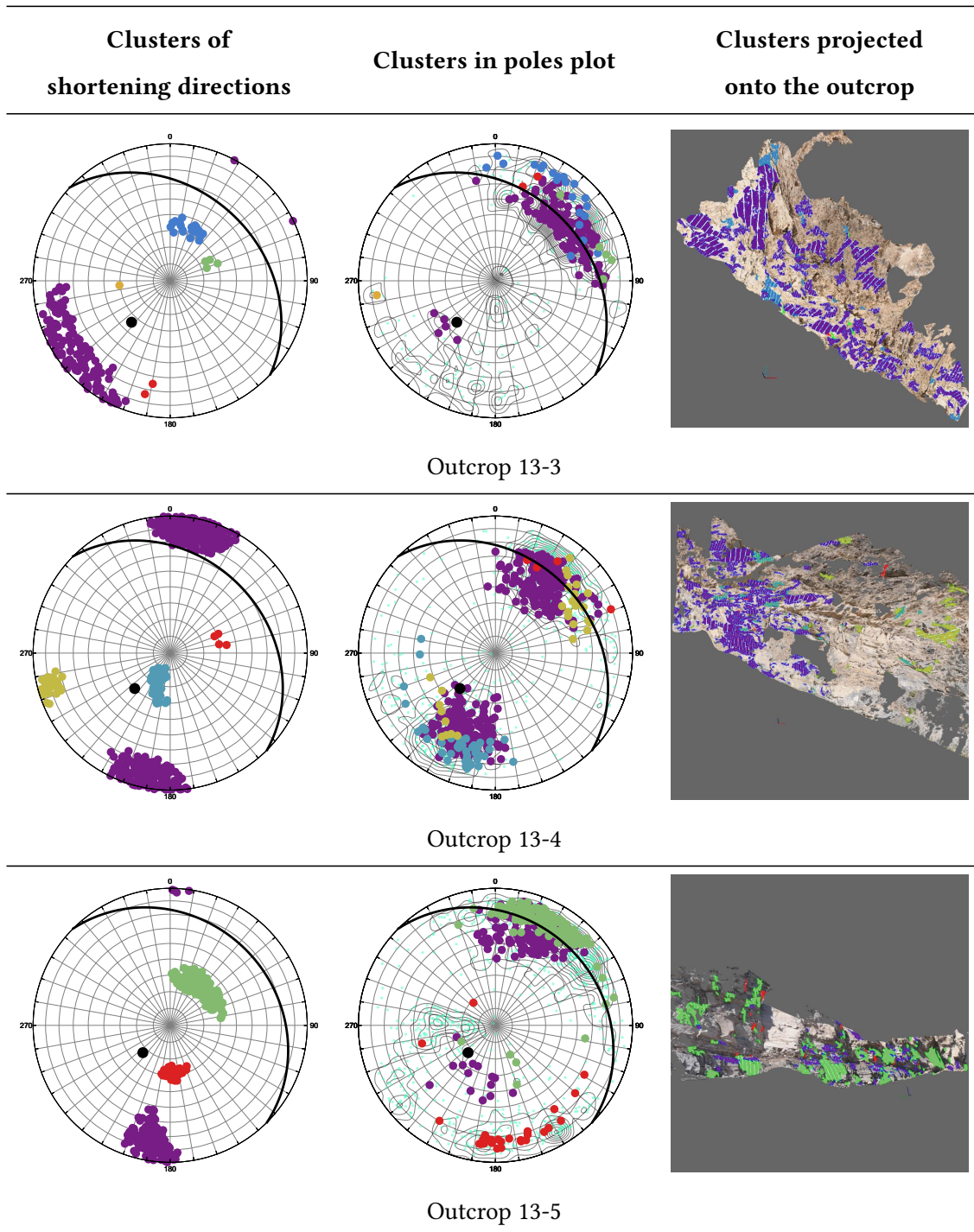
Continued on next page

Table 2 – Continued from previous page



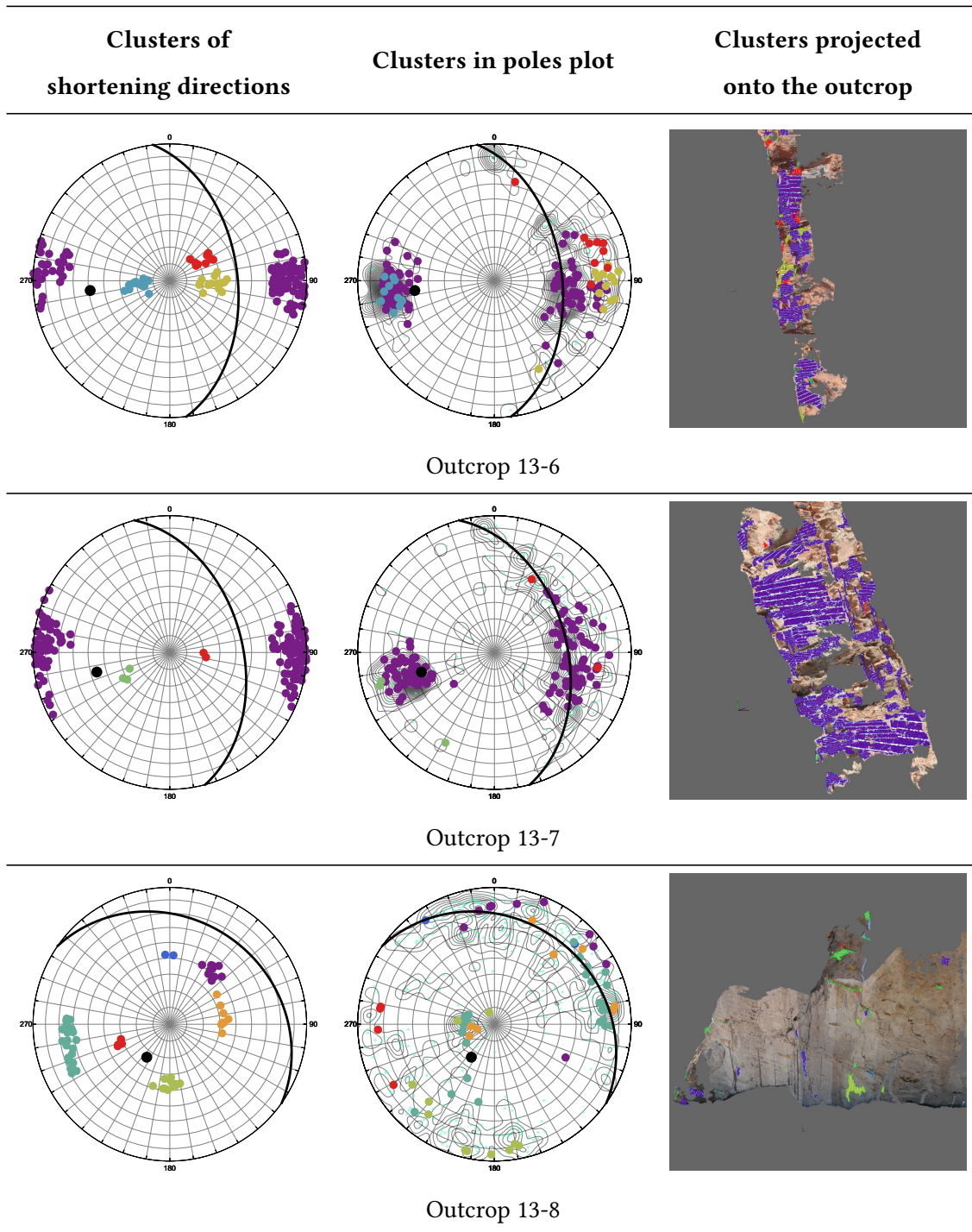
Continued on next page

Table 2 – Continued from previous page



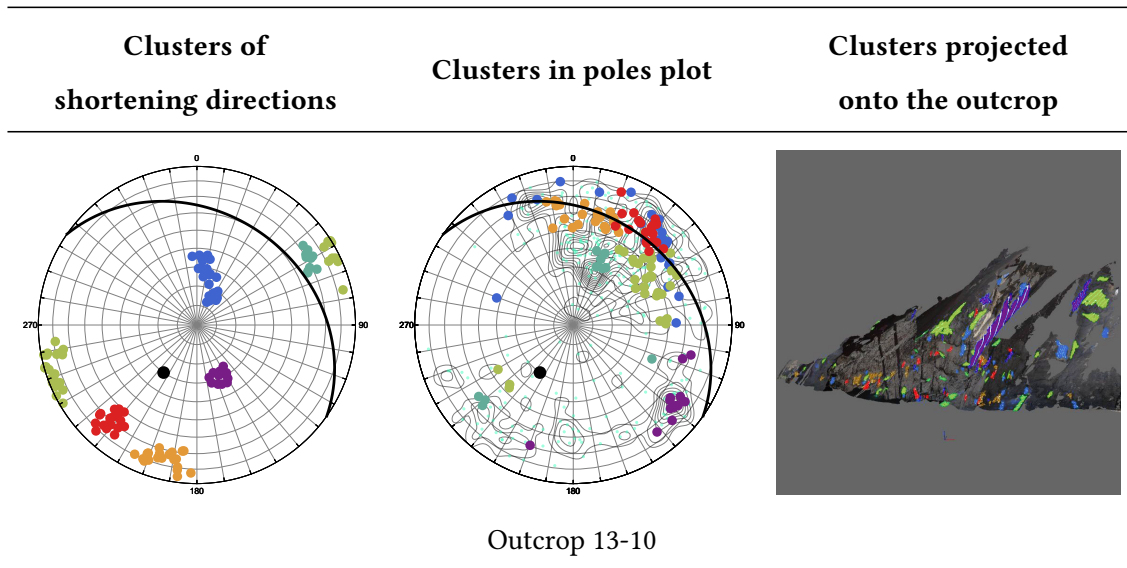
Continued on next page

Table 2 – Continued from previous page



Continued on next page

Table 2 – *Continued from previous page*



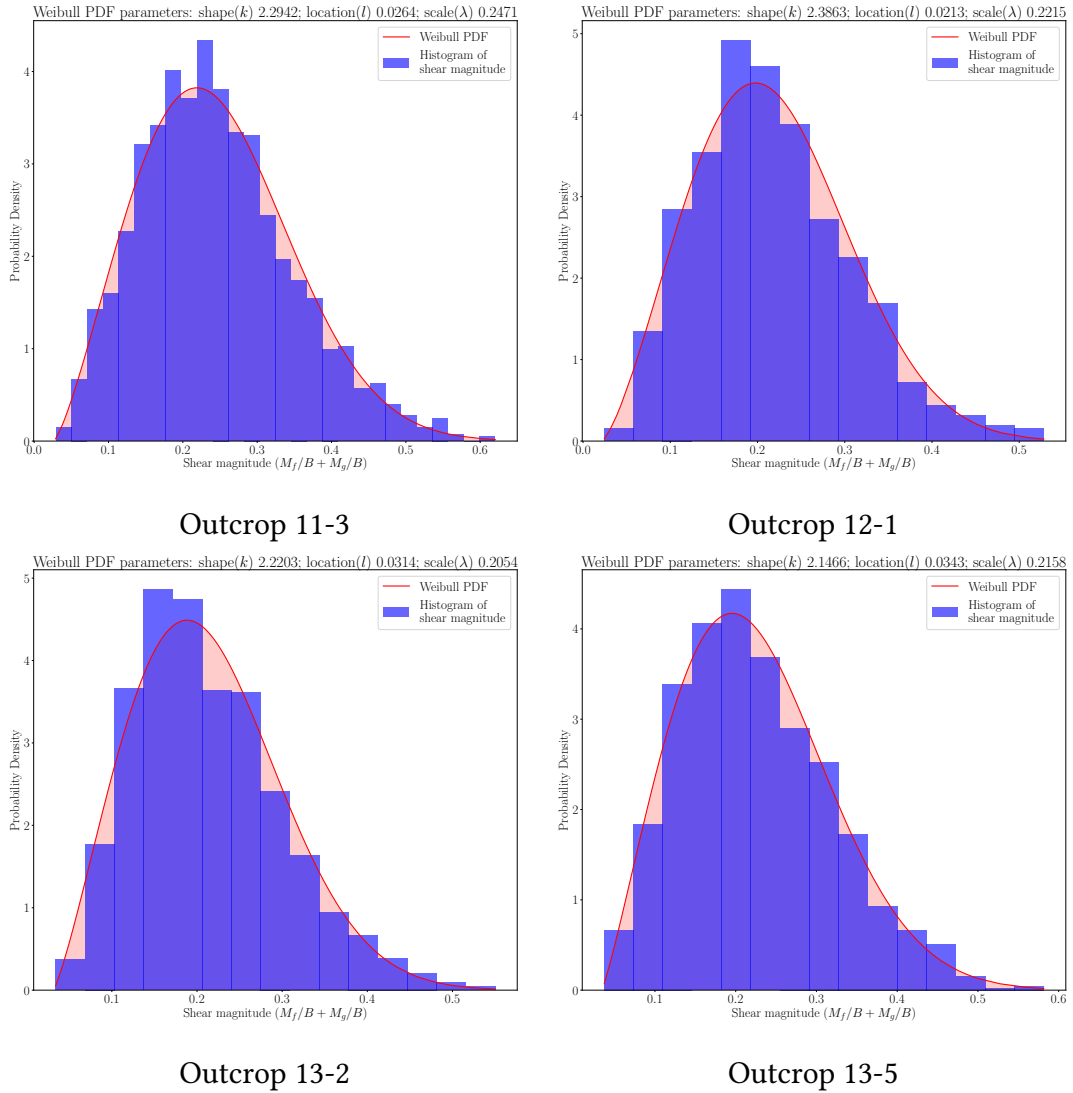


Figure 6: The histograms of the estimated relative slip $M_S = M_f/B + M_g/B$ on the fracture surfaces and the well fitted Weibull distributions.

5. Conclusions

Geologists have been trying to determine the paleostress history from evidence found in rocks for decades. But traditional paleostress inversion methods usually use manually collected data from the field, and usually have assumptions that are to some extent controversial. Recent development of techniques for automatic extraction of fracture surfaces from digital outcrop models and estimation of historical shear deformation on rock frac-

tures provide an opportunity to develop fully automatic and quantitative methods for deciphering paleostrain by providing an efficient way of acquiring large amount of high quality fracture/fault slip data. In this paper, the local strain tensors are calculated for slip on fracture surfaces, and then are grouped into populations corresponding to far-field strain events and local strain events using a clustering analysis technique called DBSCAN.

The applications on outcrops in the eastern Tian Shan area give a clear picture of the paleostrain variation over space and time: the clusters of paleostrain shortening directions from each outcrop are linked to the corresponding outcrop locations on the geological map, the far-field shortening directions in this study region changed from NE-SW to N-S over time. In a thrusting environment like the eastern Tian Shan, the paleostrain shortening events tend to use the slips on existing discontinuities like bedding surfaces to accomplish the shortening, even when the strikes of the existing discontinuities are not optimal for (perpendicular to) the shortening directions. The high angle shortening groups seem to be caused by local strains and confined by the regional strains, as many outcrops show that surfaces corresponding to the high angle shortening groups are confined between fracture surfaces corresponding to the regional shortening groups. A model like the Riedel shear structures may be suitable to describe the regional-local strain relationships here. The estimated relative slip M_S on the fracture surfaces can be very well fitted by a Weibull distribution, and the parameters of this Weibull distribution may be related to the energy needed to make slip displacements on those fracture surfaces. Further researches should focus on this subject.

Acknowledgments

We would like to thank Professor Christopher H. Scholz, Professor William Ellsworth and Professor Roland Bürgmann for their valuable comments on important problems in this research.

References

- Allen, M.B., Windley, B.F., Zhang, C., 1993. Palaeozoic collisional tectonics and magmatism of the Chinese Tien Shan, central Asia. *Tectonophysics* 220, 89–115.
- Amrouch, K., Beaudoin, N., Lacombe, O., Bellahsen, N., Daniel, J.M., 2011. Paleostress magnitudes in folded sedimentary rocks. *Geophysical Research Letters* 38.
- Amrouch, K., Lacombe, O., Bellahsen, N., Daniel, J.M., Callot, J.P., 2010. Stress and strain patterns, kinematics and deformation mechanisms in a basement-cored anticline: Sheep Mountain anticline, Wyoming. *Tectonics* 29.
- Angelier, J., 1979. Determination of the mean principal directions of stresses for a given fault population. *Tectonophysics* 56, T17–T26.
- Angelier, J., 1984. Tectonic analysis of fault slip data sets. *Journal of Geophysical Research: Solid Earth* 89, 5835–5848.
- Angelier, J., 1989. From orientation to magnitudes in paleostress determinations using fault slip data. *Journal of Structural Geology* 11, 37–50.
- Angelier, J., 1990. Inversion of field data in fault tectonics to obtain the regional stress—iii. a new rapid direct inversion method by analytical means. *Geophysical Journal International* 103, 363–376.
- Angelier, J., Tarantola, A., Valette, B., Manoussis, S., 1982. Inversion of field data in fault tectonics to obtain the regional stress—i. single phase fault populations: a new method of computing the stress tensor. *Geophysical Journal International* 69, 607–621.
- Arboit, F., Amrouch, K., Collins, A.S., King, R., Morley, C., 2015. Determination of the tectonic evolution from fractures, faults, and calcite twins on the southwestern margin of the Indochina block. *Tectonics* 34, 1576–1599.

- Bott, M.H.P., 1959. The mechanics of oblique slip faulting. *Geological Magazine* 96, 109–117.
- Boutonnet, E., Leloup, P.H., Sassier, C., Gardien, V., Ricard, Y., 2013. Ductile strain rate measurements document long-term strain localization in the continental crust. *Geology* 41, 819–822.
- Delvaux, D., Moeys, R., Stapel, G., Petit, C., Levi, K., Miroshnichenko, A., Ruzhich, V., San'kov, V., 1997. Paleostress reconstructions and geodynamics of the baikal region, central asia, part 2. cenozoic rifting. *Tectonophysics* 282, 1–38.
- Etchecopar, A., Vasseur, G., Daignieres, M., 1981. An inverse problem in microtectonics for the determination of stress tensors from fault striation analysis. *Journal of Structural Geology* 3, 51–65.
- Fu, B.H., Lin, A.M., Kano, K.I., Maruyama, T., Guo, J.M., 2003. Quaternary folding of the eastern tian shan, northwest china. *Tectonophysics* 369, 79–101.
- Hancock, P.L., 1985. Brittle microtectonics: principles and practice. *Journal of structural geology* 7, 437–457.
- Hashimoto, Y., Stipp, M., Lewis, J.C., Wuttke, F., 2019. Paleo-stress orientations and magnitudes from triaxial testing and stress inversion analysis in nankai accretionary prism sediments. *Progress in Earth and Planetary Science* 6, 3.
- Hindle, D., Burkhard, M., 1999. Strain, displacement and rotation associated with the formation of curvature in fold belts; the example of the jura arc. *Journal of structural Geology* 21, 1089–1101.
- Hippolyte, J.C., Bergerat, F., Gordon, M.B., Bellier, O., Espurt, N., 2012. Keys and pitfalls in mesoscale fault analysis and paleostress reconstructions, the use of angelier's methods. *Tectonophysics* 581, 144–162.

- Kaven, J.O., Maerten, F., Pollard, D.D., 2011. Mechanical analysis of fault slip data: Implications for paleostress analysis. *Journal of structural geology* 33, 78–91.
- Lacombe, O., 2012. Do fault slip data inversions actually yield “paleostresses” that can be compared with contemporary stresses? a critical discussion. *Comptes Rendus Geoscience* 344, 159–173.
- Ma, L.F., Qiao, X.F., Min, L.R., Fan, B.X., Ding, X.Z., et al., 2002. *Geological Atlas of China*. Beijing: Geological Publishing House.
- Molnar, P., Brown, E.T., Burchfiel, B.C., Deng, Q.D., Feng, X.Y., Li, J., Raisbeck, G.M., Shi, J.B., Wu, Z.M., Yiou, F., et al., 1994. Quaternary climate change and the formation of river terraces across growing anticlines on the north flank of the tien shan, china. *The Journal of Geology* 102, 583–602.
- Molnar, P., Deng, Q.D., 1984. Faulting associated with large earthquakes and the average rate of deformation in central and eastern asia. *Journal of Geophysical Research: Solid Earth* 89, 6203–6227.
- Molnar, P., Ghose, S., 2000. Seismic moments of major earthquakes and the rate of shortening across the tien shan. *Geophysical Research Letters* 27, 2377–2380.
- Molnar, P., Tapponnier, P., 1975. Cenozoic tectonics of asia: effects of a continental collision. *science* 189, 419–426.
- Ni, J., 1978. Contemporary tectonics in the tien shan region. *Earth and Planetary Science Letters* 41, 347–354.
- Riller, U., Clark, M.D., Daxberger, H., Doman, D., Lenauer, I., Plath, S., Santimano, T., 2017. Fault-slip inversions: Their importance in terms of strain, heterogeneity, and kinematics of brittle deformation. *Journal of Structural Geology* 101, 80–95.
- Sagy, A., Brodsky, E.E., Axen, G.J., 2007. Evolution of fault-surface roughness with slip. *Geology* 35, 283–286.

- Shimizu, I., 2008. Theories and applicability of grain size piezometers: The role of dynamic recrystallization mechanisms. *Journal of Structural Geology* 30, 899–917.
- Simón, J.L., 2019. Forty years of paleostress analysis: has it attained maturity? *Journal of Structural Geology* 125, 124–133.
- Sperner, B., Zweigel, P., 2010. A plea for more caution in fault–slip analysis. *Tectonophysics* 482, 29–41.
- Stipp, M., Tullis, J., 2003. The recrystallized grain size piezometer for quartz. *Geophysical Research Letters* 30.
- Tapponnier, P., Molnar, P., 1979. Active faulting and cenozoic tectonics of the tien shan, mongolia, and baykal regions. *Journal of Geophysical Research: Solid Earth* 84, 3425–3459.
- Twiss, R.J., Unruh, J.R., 1998. Analysis of fault slip inversions: Do they constrain stress or strain rate? *Journal of Geophysical Research: Solid Earth* 103, 12205–12222.
- Wallace, R.E., 1951. Geometry of shearing stress and relation to faulting. *The Journal of geology* 59, 118–130.
- Wang, X., Qin, Y., Yin, Z.H., Zou, L.J., Shen, X.H., 2019. Historical shear deformation of rock fractures derived from digital outcrop models and its implications on the development of fracture systems. *International Journal of Rock Mechanics and Mining Sciences* 114, 122–130.
- Wang, X., Zou, L.J., Shen, X.H., Ren, Y.P., Qin, Y., 2017. A region-growing approach for automatic outcrop fracture extraction from a three-dimensional point cloud. *Computers & geosciences* 99, 100–106.
- Windley, B.F., Allen, M.B., Zhang, C., Zhao, Z.Y., Wang, G.R., 1990. Paleozoic accretion and cenozoic reformation of the chinese tien shan range, central asia. *Geology* 18, 128–131.

Yang, S.M., Li, J., Wang, Q., 2008. The deformation pattern and fault rate in the tianshan mountains inferred from gps observations. *Science in China Series D: Earth Sciences* 51, 1064–1080.