

This manuscript has been submitted in the "Numerical Methods in Civil Engineering" journal. Please note that, despite having undergone peer review, the manuscript has yet to be formally accepted for publication. Subsequent versions of this manuscript may have slightly different content. If accepted, the final version of this manuscript will be available via the 'Peer-reviewed Publication DOI' link on the right-hand side of this webpage. Please feel free to contact us, we welcome feedback.

# Application of the Image Processing Method and the Beer-Lambert Law for Assessing Sea Water Intrusion in Rivers

**Ehsan Kahrizi<sup>1\*</sup>**

Department of Civil and Environmental Engineering, Utah State University, Logan, UT, USA

[Ehsan.kahrizi@usu.edu](mailto:Ehsan.kahrizi@usu.edu)

## **Abstract**

This paper presents an innovative approach integrating the Image Processing Method and the Beer-Lambert Law to study Sea Water Intrusion in riverine systems. Using an experimental setup, this study characterizes the dynamics between saline and fresh waters, providing detailed spatial and temporal salinity distribution analyses. The Beer-Lambert Law is employed to convert image pixel data to accurate concentration measurements, essential for understanding the diffusion and mixing processes of saline wedges. This study not only bridges technological advances with hydrological research but also provides crucial data for water resource management in coastal areas affected by Sea Water Intrusion. The integration of the Image Processing Method and Beer-Lambert Law exemplifies a significant advancement in environmental monitoring, promoting sustainable water resource management in regions vulnerable to saline intrusion. Results showed that the concentration of the salt water is decreased when it flows upstream horizontally. also, the concentration of the saline water is decreased vertically, due to the salt and fresh water mixing.

**Keywords:** Image Processing Method, Sea Water Intrusion, Beer-Lambert Law, Density Current, Saline Water

## 1. Introduction

The phenomenon of Sea Water Intrusion (SWI) into freshwater systems is a complex hydrodynamic process with profound implications for riverine salinity distribution and ecological balance. As SWI poses a threat to biodiversity and water quality, a comprehensive understanding of salinity variations within these systems is paramount for effective water resource management (Botlaguduru et al., 2015; O. Kahrizi et al., 2020; Rezapouraghdam et al., 2015); Heidarian et al., 2022). In coastal areas, a significant portion of the water consumption is supplied by groundwater a riverain resources (Erostate et al., 2020; Hajebi et al., 2024). Burgan et al., (2017) conducted a statistical study about extreme events in some rivers that indicated the frequency of extreme events increased from 1981 to 2000 which can cause destructive results. Overexploitation of groundwater resources, Sea-Level Rise (SLR) due to climate changes, and extreme conditions such as drought and floods lead to SWI in coastal zones (Ebrahimi & Shourian, 2020; Firozjaei et al., 2024). Currently, more than 100 counties and locals world- wide are endangered by SWI (Abd-Elhamid et al., 2016; Barlow & Reichard, 2010; Bhagat et al., 2021; Han & Currell, 2018; Motaei et al., 2024; Palacios et al., 2020). SWI could affect water bodies and the neighboring regions along rivers; effects may include the intrusion of seawater into drinking water resources, the contamination of agricultural farms, and the pollution of groundwater resources (Roudbari et al., 2023; Khoshkonesh et al., 2024; Kahrizi et al., 2023).

Traditional methods of monitoring SWI and saline wedge through direct sampling and analysis are often constrained by their spatial and temporal limitations (Ebrahimi & Shourian, 2022). However, the advent of image-processing technologies heralds a new paradigm for observing and quantifying these complex dynamics. The Image Processing Method (IPM) offers a non-intrusive means to assess salinity concentrations, thereby facilitating more nuanced environmental assessments (Kahrizi et al., 2023; Khoshkonesh et al., 2022). One of the good ways to employ IPM to detect the concentration of the salinity of river water in the saline wedge is using the Beer-Lambert Law (BLL) (DF Swinehart, 1962; Alireza Khoshkonesh et al., 2021). This methodological integration is informed by the work of (Ghisalberti & Nepf, 2005; Ghaffari & Tavakoli, 2022; Firozjaei et al., 2023; Naeni et al., 2023), who previously applied BLL to determine concentration profiles in flows through porous media.

Despite these technological advances, the literature reveals a notable gap in the detailed analysis of horizontal and vertical salinity variations along a seawater intrusion wedge within river systems. This knowledge is economically significant, as the extent of intrusion under real-world conditions can span tens of kilometers. Understanding the distribution of salinity along a river is essential for determining the contamination concentration at each point, which has direct implications for managing and mitigating the economic impacts of salinity intrusion. Addressing this gap, our study aims to use IPM, augmented by the quantitative power of the BLL, to characterize salinity profiles within a river flume. Thus, by blending IPM with BLL, this study not only sheds light on the patterns of SWI but also paves the way for advancements in real-time monitoring of aquatic environments. The integration of such cutting-edge technologies is vital for devising strategies to counter the challenges of freshwater depletion and underscores the importance of innovation in sustaining water resources.

## 2. Material and Methods

### 2.1. Experimental Set-up

In this experiment, a straight, 2D flume measuring 200 cm in length, 5 cm in width, and 50 cm in height was utilized (see Figure 1). Freshwater flowed from the upstream end (right side) to the downstream end (left side). A sharp-crested weir at the reservoir's end regulated the water depth. To simulate saline wedge intrusion, seawater was introduced from an outlet at the downstream edge, flowing towards the upstream side. The experimental assumptions include a flume with zero slope and a rectangular cross-section, and no friction between the flume and the water.

This manuscript has been submitted in the "Numerical Methods in Civil Engineering" journal. Please note that, despite having undergone peer review, the manuscript has yet to be formally accepted for publication. Subsequent versions of this manuscript may have slightly different content. If accepted, the final version of this manuscript will be available via the 'Peer-reviewed Publication DOI' link on the right-hand side of this webpage. Please feel free to contact us, we welcome feedback.

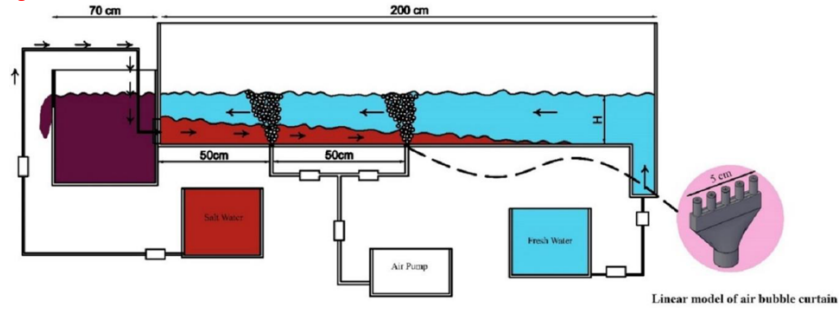


Figure 1 Experimental set-up's side view.

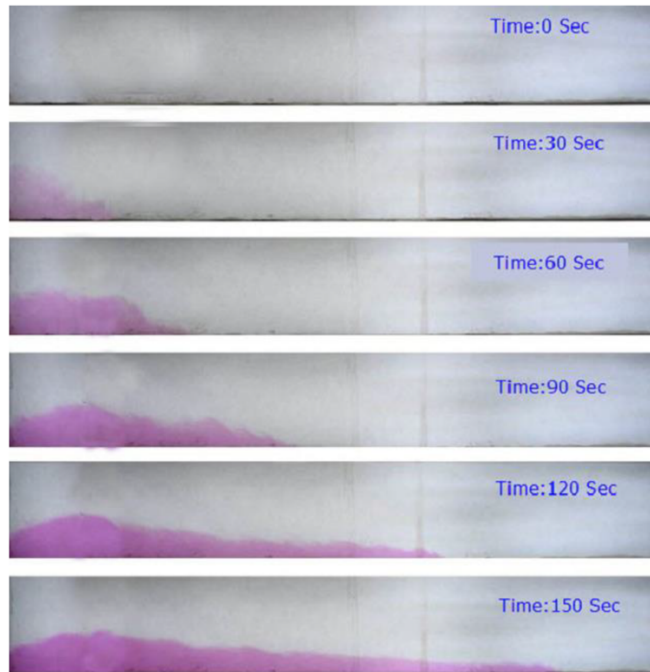


Figure 2 SWI progress.

$Re_o$ ,  $Fr_d$ , and  $Fr$  are the channel Reynolds number, channel Densimetric Froude number, and channel Froude number, respectively, which are obtained as follows (Equations 1- 4):

$$Re_o = \frac{q_f}{\nu} \quad (1)$$

$$Fr_d = \frac{q_f}{(g'H^3)^{0.5}} \quad (2)$$

$$g' = \left( \frac{\rho_s - \rho_f}{\rho_f} \right) * g \quad (3)$$

$$Fr = \frac{V}{(gH)^{0.5}} \quad (4)$$

where  $g'$ ,  $V$ ,  $g$ , and  $\nu$  denote the buoyancy acceleration, freshwater velocity, gravitational acceleration, and the kinematic viscosity, respectively.

## 2.2. Test Cases

In our experimental setup to assess the impact density of saline water on the SWI process, we designed a test case to simulate process intrusion. The test utilizes saline solutions with density of 1.006 g/cm<sup>3</sup>. The method involves adjusting the saline water input to achieve these specific densities, thereby allowing us to study the corresponding changes in the river's salinity profile. The detail of the test case is presented in the Table 1.

Table 1 Test Case details

$\rho_s$	$Fr_d$	$Fr$	$Re_o$
1.006	0.38	0.0307	11277

## 2.3. Image processing Method

One important aspect of applying IPM in such studies involves quantifying the mixing levels of SWI. This quantification is achieved by correlating the pixel intensity captured in images to the dye concentration, a relationship defined by the Beer–Lambert Law (BLL). BLL posits that the intensity of light passing through a medium is exponentially attenuated depending on the concentration of the absorbing species and the path length of the light through that medium. This law forms the theoretical foundation for determining concentration profiles in various fluids and has been particularly useful in research involving fluid flows through porous media, as demonstrated in the study by Ghisalberti & Nepf, (2005).

In practical applications within the experimental flumes, potassium permanganate serves as a tracer dye. This chemical is chosen due to its distinct color and optical properties, which make it ideal for detailed tracing of salt concentrations in seawater wedges. The presence of potassium permanganate allows for the precise determination of concentration gradients along the flume, which are crucial for understanding the mixing mechanisms at play.

Ghisalberti & Nepf, (2005) provided a fundamental equation under BLL, where  $I_0$  represents the initial light intensity before entering the medium, and  $I$  denote the intensity of the light after it has passed through the medium. The equation is expressed as follows (Equation 5):

$$\text{Log} \left( \frac{I_0}{I} \right) = \varepsilon bc \quad (5)$$

where  $\varepsilon$  is the absorption coefficient,  $c$  is the concentration of the absorbing species, and  $b$  is the path length of the light through the medium. This equation is crucial for converting the pixel data obtained through IPM into accurate concentration measurements, allowing researchers to analyze the diffusion and mixing patterns of SWI with high precision.

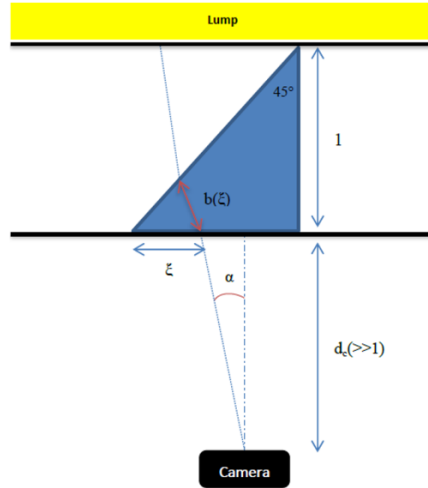


Figure 3 Plan view of the calibration of Beer-Lambert Law in the experiments (E. Kahrizi et al., 2023).

### 3. Results

In this study, we employed the integration of the Image Processing Method (IPM) and the Beer-Lambert Law (BLL) to investigate the phenomenon of Sea Water Intrusion (SWI) in riverine systems. The experimental setup was designed to simulate the intrusion of saline water into a river flume, capturing the complex interactions between the saline and fresh waters under controlled conditions. The resultant salinity distributions were meticulously analyzed using advanced imaging techniques and quantitative optical methods, which are instrumental in delineating the spatial and temporal variations of salinity within the flume.

**Concentration Profile Analysis:** The "Max Concentration Profile" graph (Figure 4) vividly illustrates the dynamics of saline intrusion, beginning with a sharp peak at the start of the length scale, near the 0 cm mark, where the concentration reaches approximately  $1000 \text{ g/cm}^3$ . This initial high concentration represents the point of saline introduction into the flume and is crucial for understanding the dynamics of saline mixing at the onset of intrusion. The concentration rapidly decreases to about  $600 \text{ g/cm}^3$  within the first 10 cm, demonstrating a swift diffusion and dilution process facilitated by the river's hydrodynamics. Beyond this point, the concentration continues to taper off more gradually, stabilizing around  $200 \text{ g/cm}^3$  past the 100 cm mark. This profile not only provides insights into the initial impact of the saline intrusion but also into the subsequent dispersion and mixing processes as the saline water travels downstream. The decreasing trend observed along the length of the flume is indicative of the diffusion and mixing processes affecting the saltwater as it integrates with the river water, progressively diluting as it moves away from the source.

**Concentration Contour Analysis:** Complementing the concentration profile, the "Concentration Contour" graph (Figure 4) offers a two-dimensional visualization of salinity distribution across both the length and height of the experimental setup. This graph displays a high concentration of salinity, primarily concentrated at the lower heights of the flume, especially near the bottom 10 cm, and spanning approximately the first 200 pixels in position. This high-density region correlates well with the initial peak observed in the "Max Concentration Profile" graph, reflecting the localized intensity of the saline introduction.

As one moves vertically up the flume from this initial high concentration zone, there is a noticeable transition to lower concentrations, depicted in cooler colors such as blue, indicating lesser salinity. Notably, from approximately 30 cm in height, the salinity concentration remains relatively low and uniform across the remainder of the flume. This vertical stratification of salt concentration is indicative of the denser saline water settling at the bottom of the flume due to gravitational forces, with less mixing occurring at higher elevations. The clearer waters above demonstrate less interference from the saline water, highlighting the effectiveness of natural stratification processes in containing and isolating saline intrusions at lower levels.

This manuscript has been submitted in the "Numerical Methods in Civil Engineering" journal. Please note that, despite having undergone peer review, the manuscript has yet to be formally accepted for publication. Subsequent versions of this manuscript may have slightly different content. If accepted, the final version of this manuscript will be available via the 'Peer-reviewed Publication DOI' link on the right-hand side of this webpage. Please feel free to contact us, we welcome feedback.

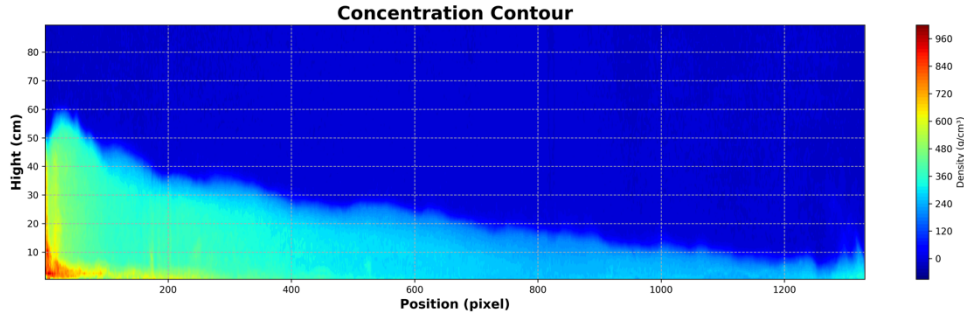


Figure 5 Concentration Contour

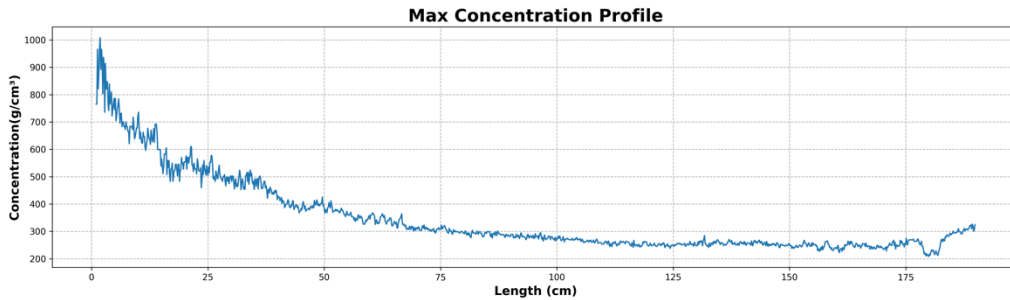


Figure 6 Max Concentration Profile

#### 4. Discussion

In this study, the integration of the IPM and the BLL provided pivotal insights into the dynamics of SWI within riverine systems, particularly emphasizing the interaction between saline and fresh waters. The "Max Concentration Profile" and "Concentration Contour" graphs were instrumental in validating the BLL's theoretical predictions about light attenuation through varying concentrations of saline solutions. Observations from the experimental setup revealed an initial high concentration of salinity at the point of introduction, which exhibited an exponential decrease in concentration as it progressed downstream, aligning with BLL expectations where light absorption is most intense near the source of saline intrusion.

The spatial distribution captured in these visualizations crucially demonstrated the effectiveness of combining IPM and BLL for real-time environmental monitoring, offering a non-intrusive means to continuously analyze the extent of saltwater intrusion. Such monitoring is vital for managing water resources in coastal areas, where the dynamics of saline intrusion are a major concern. Additionally, the stratification pattern observed in the "Concentration Contour" graph aligns with BLL predictions, showing that the denser saline layer remained settled at the bottom due to gravitational forces, thereby reducing light penetration and increasing absorption in these lower layers.

This stratification is critical for understanding saline intrusion dynamics, especially in scenarios where the saline water's density surpasses that of freshwater. The results from this study provide valuable insights into the mechanisms controlling saltwater propagation and mixing, which are essential for developing strategies to mitigate the impact of saline intrusion on river water quality—a factor crucial for both ecological health and human consumption.

This manuscript has been submitted in the "Numerical Methods in Civil Engineering" journal. Please note that, despite having undergone peer review, the manuscript has yet to be formally accepted for publication. Subsequent versions of this manuscript may have slightly different content. If accepted, the final version of this manuscript will be available via the 'Peer-reviewed Publication DOI' link on the right-hand side of this webpage. Please feel free to contact us, we welcome feedback.

Moreover, by employing IPM and BLL, the study highlights the potential of merging advanced technological methods with classical physical laws to enhance our comprehension of complex environmental phenomena. This approach not only confirms BLL's utility in environmental studies but also underscores the importance of sophisticated imaging and analytical techniques in hydrological research.

The comprehensive analysis provided by this integration does not only advance our theoretical knowledge of SWI dynamics but also equips water resource managers with empirical data and practical insights. These insights are indispensable for forecasting changes and implementing effective countermeasures against the adverse effects of saline water intrusion into freshwater systems. Ultimately, this study underscores the significance of such innovative methodologies in promoting sustainable water resource management in regions susceptible to saline intrusion.

## **5. Conclusion**

This study combined the IPM and the BLL to investigate SWI in river systems. Using a new experimental setup, it offered detailed insights into the interactions between saline and freshwater, demonstrating how saline water disperses within a river flume. The application of IPM and BLL allowed for real-time monitoring of salinity distributions, critical for managing water resources effectively in coastal areas. This approach confirmed theoretical models about light attenuation related to saline concentrations and provided a deeper understanding of the diffusion processes and behaviors of saline wedges.

The research showed that combining IPM with BLL could revolutionize environmental monitoring by providing non-intrusive, precise, and ongoing evaluations of water salinity. This synergy is crucial for the strategic management of water resources, helping to mitigate the impact of SWI. The study highlights the role of technological advancements in hydrology, combining modern imaging techniques with traditional analytics to enhance theoretical and practical understanding of environmental challenges. Ultimately, the study underlines the potential of integrating advanced technology with scientific principles to improve the management and sustainability of water resources in regions prone to saline intrusion.



This manuscript has been submitted in the "Numerical Methods in Civil Engineering" journal. Please note that, despite having undergone peer review, the manuscript has yet to be formally accepted for publication. Subsequent versions of this manuscript may have slightly different content. If accepted, the final version of this manuscript will be available via the 'Peer-reviewed Publication DOI' link on the right-hand side of this webpage. Please feel free to contact us, we welcome feedback.

## References

- Abd-Elhamid, H., Javadi, A., Abdelaty, I., & Sherif, M. (2016). Simulation of seawater intrusion in the Nile Delta aquifer under the conditions of climate change. *Hydrology Research*, 47(6), 1198–1210.
- Alireza Khoshkonesh, Blaise Nsom, Fariba Ahmadi Dehrashid, Payam Heidarian, & Khuram Riaz. (2021). *Comparison of the SWE and 3D models in simulation of the dam-break flow over the mobile bed*. <https://www.researchgate.net/publication/353283892>
- Barlow, P. M., & Reichard, E. G. (2010). Saltwater intrusion in coastal regions of North America. *Hydrogeology Journal*, 18(1), 247–260. <https://doi.org/10.1007/s10040-009-0514-3>
- Bhagat, C., Khandekar, A., Singh, A., Mohapatra, P. K., & Kumar, M. (2021). Delineation of submarine groundwater discharge and seawater intrusion zones using anomalies in the field water quality parameters, groundwater level fluctuation and sea surface temperature along the Gujarat coast of India. *Journal of Environmental Management*, 296. <https://doi.org/10.1016/j.jenvman.2021.113176>
- Burgan, H. I., Vaheddoost, B., & Aksoy, H. (2017). Frequency Analysis of Monthly Runoff in Intermittent Rivers. *World Environmental and Water Resources Congress 2017*, 327–334. <https://doi.org/10.1061/9780784480625.030>
- Ebrahimi, E., & Shourian, M. (2020). River Flow Prediction Using Dynamic Method for Selecting and Prioritizing K-Nearest Neighbors Based on Data Features. *Journal of Hydrologic Engineering*, 25(5). [https://doi.org/10.1061/\(asce\)he.1943-5584.0001905](https://doi.org/10.1061/(asce)he.1943-5584.0001905)
- Ebrahimi, E., & Shourian, M. (2022). A feature-based adaptive combiner for coupling meta-modelling techniques to increase accuracy of river flow prediction. *Hydrological Sciences Journal*, 67(14), 2065–2081. <https://doi.org/10.1080/02626667.2022.2130700>
- Erostate, M., Huneau, F., Garel, E., Ghiotti, S., Vystavna, Y., Garrido, M., & Pasqualini, V. (2020). Groundwater dependent ecosystems in coastal Mediterranean regions: Characterization, challenges and management for their protection. *Water Research*, 172, 115461. <https://doi.org/10.1016/j.watres.2019.115461>
- Firozjaei, M. R., Hajebi, Z., Naeeni, S. T. O., & Akbari, H. (2024). Discharge performance of a submerged seawater intake in unsteady flows: Combination of physical models and decision tree algorithms. *Journal of Water Process Engineering*, 60, 105198. <https://doi.org/10.1016/j.jwpe.2024.105198>
- Firozjaei, M. R., Naeeni, S. T. O., & Akbari, H. (2023). Evaluation of seawater intake discharge coefficient using laboratory experiments and machine learning techniques. *Ships and Offshore Structures*, 1–14. <https://doi.org/10.1080/17445302.2023.2247125>
- Ghaffari, S. B., & Tavakoli, O. (2022). *Industrial waste generation and characterization in Iran: a circular economy approach*. [http://generalchemistry.chemeng.ntua.gr/uest/corfu2022/proceedings/II/1345\\_Valiasil.pdf](http://generalchemistry.chemeng.ntua.gr/uest/corfu2022/proceedings/II/1345_Valiasil.pdf)
- Ghisalberti, M., & Nepf, H. (2005). Mass transport in vegetated shear flows. In *Environmental Fluid Mechanics* (Vol. 5, Issue 6, pp. 527–551). <https://doi.org/10.1007/s10652-005-0419-1>



This manuscript has been submitted in the "Numerical Methods in Civil Engineering" journal. Please note that, despite having undergone peer review, the manuscript has yet to be formally accepted for publication. Subsequent versions of this manuscript may have slightly different content. If accepted, the final version of this manuscript will be available via the 'Peer-reviewed Publication DOI' link on the right-hand side of this webpage. Please feel free to contact us, we welcome feedback.

- Hajebi, Z., Firozjaei, M. R., Naeeni, S. T. O., & Akbari, H. (2024). Hydraulic performance of bottom intake velocity caps using PIV and OpenFOAM methods. *Applied Water Science*, 14(3), 38. <https://doi.org/10.1007/s13201-023-02091-1>
- Han, D., & Currell, M. J. (2018). Delineating multiple salinization processes in a coastal plain aquifer, northern China: hydrochemical and isotopic evidence. *Hydrology and Earth System Sciences*, 22(6), 3473–3491.
- Heidarian, P., Neyshabouri, S. A. A. S., Khoshkonesh, A., Bahmanpouri, F., Nsom, B., & Eidi, A. (2022). Numerical study of flow characteristics and energy dissipation over the slotted roller bucket system. *Modeling Earth Systems and Environment*, 8(4), 5337–5351. <https://doi.org/10.1007/s40808-022-01372-z>
- Kahrizi, E., Salehi Neyshabouri, S. A. A., Zeynolabedin, A., Sourji, J., & Akbari, H. (2023). Experimental evaluation of two-layer air bubble curtains to prevent seawater intrusion into rivers. *Journal of Water and Climate Change*, 14(2), 543–558. <https://doi.org/10.2166/wcc.2023.384>
- Kahrizi, O., Naderi, N., Rezaei, B., & Olya, H. (2020). The Barriers Against the Entrepreneurship Development of Medical and Healthcare Tourism Industry: Evidence From Kermanshah, Iran. *International Journal of Health and Life Sciences*, 6(2). <https://doi.org/10.5812/ijhls.102036>
- Khoshkonesh, A., Asim, T., Mishra, R., Dehrashid, F. A., Heidarian, P., & Nsom, B. (2022). Study the effect of obstacle arrangements on the dam-break flow COMADEM International Journal of Condition Monitoring and Diagnostic Engineering Management. In *International journal of COMADEM*. [https://pure.hud.ac.uk/ws/files/47608562/Alireza\\_et\\_al\\_COMADEM\\_final\\_5\\_1\\_1\\_.pdf](https://pure.hud.ac.uk/ws/files/47608562/Alireza_et_al_COMADEM_final_5_1_1_.pdf)
- Motaei, S., Ghazavi, M., & Rezazadeh, G. (2024). Incorporating temperature-dependent properties into the modeling of photo-thermo-mechanical interactions in cancer tissues. *Thermal Science and Engineering Progress*, 47. <https://doi.org/10.1016/j.tsep.2023.102351>
- Palacios, A., Ledo, J. J., Linde, N., Luquot, L., Bellmunt, F., Folch, A., Marcuello, A., Queralt, P., Pezard, P. A., Martínez, L., & others. (2020). Time-lapse cross-hole electrical resistivity tomography (CHERT) for monitoring seawater intrusion dynamics in a Mediterranean aquifer. *Hydrology and Earth System Sciences*, 24(4), 2121–2139.
- Rezapouraghdam, H., Kahrizi, O., & Hassannia, R. (2015). *Journal of Sustainable Development Studies On The Right Path towards Benefiting From Tourism; A Compendious Debate on Sustainability*. 8(1), 37–52. [www.northcyprus.cc](http://www.northcyprus.cc)