

EarthArXiv Coversheet
2024-06-17

Predictive modelling of seismic properties in single-foliated slates

Marco A. Lopez-Sanchez*

Departamento de Geología, Universidad de Oviedo, 33005, Oviedo, Spain

<http://orcid.org/0000-0002-0261-9267>

email: lopezmarco@uniovi.es

Corresponding author

Víctor Cárdenes Van den Eynde,

Departamento de Geología, Universidad de Oviedo, 33005, Oviedo, Spain

<https://orcid.org/0000-0001-5246-7284>

email: cardenesvictor@uniovi.es

Fabrice Barou

Géosciences Montpellier – CNRS & Université de Montpellier, France

<https://orcid.org/0000-0002-8382-0826>

email: fabrice.barou@umontpellier.fr

Sergio Llana-Fúnez

Departamento de Geología, Universidad de Oviedo, 33005, Oviedo, Spain

<https://orcid.org/0000-0002-8748-5623>

email: llanasergio@uniovi.es

This manuscript has been submitted for publication in *Earth and Planetary Science Letters* and it is currently under review. As it is a non-peer-reviewed preprint submitted to *EarthArXiv*, it may be periodically revised. If accepted, the final version will be available via the 'Peer-review Publication DOI' link on the right-hand side of this webpage.

Please feel free to contact any of the authors, we welcome feedback.

Predictive modelling of seismic properties in single-foliated slates

Marco A. Lopez-Sanchez^{1*}, Víctor Cárdenes¹, Fabrice Barou², Sergio Llana-Fúnez¹

¹Departamento de Geología, Universidad de Oviedo, 33005, Oviedo, Spain

²Géosciences Montpellier – CNRS & Université de Montpellier, Montpellier, France

*Corresponding author

Abstract. Slates play a key role in understanding the seismic anisotropy of the continental crust, a crucial aspect of geophysical interpretation. Using a comprehensive set of high-quality single-foliated roofing slates, we determined their typical seismic properties via mineral fractions and orientation distribution functions using the VRH averaging method. Our study focused on identifying optimal polar (transverse isotropy) models, assess correlations between elastic constants, and explore the feasibility of predicting intrinsic maximum anisotropy from a single proxy. We demonstrate that axial and polarization anisotropy in single-foliated slates can be accurately estimated with ~10% error using a single proxy, termed the S-norm, which integrates the ODF strength and volumetric fraction of phyllosilicates. Additionally, we found that a polar parameterization combining elastic tensor decomposition and the Anderson equations yields seismic anisotropy predictions similar to the Christoffel equation, with errors below 3% (<0.3% for Vp). Lastly, our findings suggest that it is feasible to estimate the seismic properties of transversely isotropic slates from only two measurements: a diagonal component and the non-diagonal C13 component. These models are applicable for investigating slate belts at various depths, enabling the calculation of the minimum expected seismic anisotropy from intrinsic properties.

Keywords: Slate, Crystallographic Preferred Orientation, Seismic properties, Seismic anisotropy

1. Introduction

Slates, a major component of continental crust and sedimentary basins, play a key role in seismic wave propagation and fluid flow due to their pronounced seismic anisotropy and low permeability. Alongside serpentinites, slates are among the few crustal rocks capable of developing strong intrinsic seismic anisotropy (exceeding 10%). This makes them a plausible source for the anisotropy and shear wave splitting observed in the continental crust (Acevedo et al., 2022; Barruol et al., 1998; Barruol and Mainprice, 1993; Christensen and Mooney, 1995; Díaz et al., 2006). Despite their volumetric significance and unique seismic fingerprint, most seismic property studies on phyllosilicate-rich rocks have primarily focused on shales due to their economic importance in the petroleum industry (e.g., Asaka et al., 2021; Hornby, 1998; Johnston and Christensen, 1995; Lonardelli et al., 2007; Sayers, 2005; Yurikov et al., 2021). This has led to a notable imbalance in the research conducted on the seismic properties between shales and slates. Although shales are the precursors of slates, it remains unclear whether the seismic properties of shales can be directly extrapolated to slates, given that metamorphic processes can enhance or diminish their anisotropic properties. This research paper aims to fill this gap by determining the typical seismic properties of chlorite-bearing single-foliated slates and to test which models are best suited to predict their seismic properties.

The general microstructure and the typical crystallographic preferred orientation (CPO) of the primary mineral phases in slates are well-documented (e.g., Wenk et al., 2020 and references therein). Phyllosilicates in slates can develop exceptionally strong CPOs, with c-axis orientation peaks in pole figure two orders of magnitude higher than a uniform crystallographic orientation. Specifically, in single-foliated slates phyllosilicate c-axis (i.e., the slow direction) arranges normal to the slaty cleavage and the a- and b-axes (fast directions) arrange randomly within the cleavage plane. In contrast, quartz and feldspars tend to show either a random or a weak preferred orientation of crystallographic axes despite the development of flattened shapes, i.e. there is a complete decoupling between shape and crystallographic orientation.

The unique arrangement of major minerals in slates, coupled with their high phyllosilicate content and the strongly anisotropic seismic properties of phyllosilicates, provides these rocks their distinct transversely isotropic seismic fingerprint characterized by hexagonal symmetry and the ability to reach exceptionally high axial anisotropy values. Reported anisotropy values vary widely between 5 to 66% for V_p , 5 to 47% for V_{s1} , and 5 to 30% for shear wave splitting (Guo et al., 2014; Cárdenes et al., 2021; Naus-Thijssen et al., 2011b; Wenk et al. 2022). These exceptionally wide ranges of anisotropy reflect the combined effects of intrinsic factors (mineral content and crystallographic orientation) and extrinsic factors, such as the effect of porosity, oriented cracks, shape fabric, or the elastic properties

of the interplatelet medium. For single-foliated slates, it is well established that extrinsic factors tend to increase axial anisotropy values by reducing wave propagation velocity in directions normal to the foliation (Cárdenes et al., 2021). Conversely, the impact of extrinsic microscale factors (e.g., porosity, oriented cracks) in slates tends to be negligible at pressures above 150 MPa (approximately 6 km burial depth) (Guo et al. 2014). Thus, the anisotropy of slate can be primarily controlled by intrinsic factors, distinguishing them from shales.

Using a diverse set of high-quality (i.e. suitable for roofing) chlorite-bearing single-foliated slates with varying arrangements and mineral fractions, our goal is to explore the limits imposed by the intrinsic factors on the seismic properties of slates, and to establish a robust model for calculating slate anisotropy based on simple proxies.

2. Samples and methods

2.1 Samples

Our analysis included 14 single-foliated Chl-bearing slates, which belong to different varieties of “roofing slates” (i.e. used as tiles for roofs and covers) with varying metamorphic degrees collected in operative quarries around the world (Table S1). In addition, we included a micaceous quartzite (ALT) and a serpentized peridotite (SPT) for comparison. The slate samples PBT, WA, RIM, RVS, and BRA had not been previously analysed, while the ANL, BEI, CA, EUP GXE, IRO, and OSO samples were previously modelled in Cárdenes et al. (2021). We reanalysed these samples because the mineral content in the previous study was based on EBSD data, which resulted in lower than actual phyllosilicate fractions due to uneven indexing between phases. In this study, we re-estimated the phyllosilicate/silt fractions based on chemical maps (see section 2.2). Additionally, we employed more recent elastic properties for quartz and chlorite for modelling (Table S2). The difference is particularly noticeable in the case of chlorite, which exhibits less anisotropy and more pronounced axial symmetry than the one used in Cárdenes et al. (2021). The V_p and V_{s1} wave speeds of these samples were measured experimentally at room pressure conditions in Cárdenes et al. (2021) and are thus useful for validating the modelling procedure developed here. Lastly, larger EBSD maps have been measured for the IRO and OSO samples.

2.2 Methods

2.2.1 Petrological characterization and metamorphic degree

A petrological characterisation was conducted on thin sections cut perpendicular to the slaty cleavage of each sample using transmitted light microscopy. Additionally, to quantify the metamorphic degree of the slates, the Kübler index was determined at the Analytical Services facilities of the University of

Extremadura, Spain, following the recommendations of the IGPC Working Group 294 IC (Fettes and Desmons, 2011).

2.2.2 Mineral fraction estimation

Mineral content was quantified using large-area multi-elemental Energy Dispersive X-ray Spectroscopy (EDX) chemical maps acquired from a single section, either XZ or XY sections. Details of the procedure and the custom Python codes used are available in the Supplementary Material.

2.2.3 Electron backscatter diffraction (EBSD) acquisition and data processing

For EBSD analysis, a small slab (2×2 cm) was extracted from each sample and embedded in epoxy resin at room pressure with the XZ or XY plane facing upwards. Polishing was achieved with diamond paste down to 0.25 microns, followed by a final polish using colloidal silica in a VibroMet polisher. EBSD and EDX maps were acquired simultaneously using a CamScan X500-FE CrystalProbe SEM at Géosciences Montpellier (France) to determine both the crystallographic preferred orientation of minerals and their phase composition. We analysed the samples without carbon coating. The operating conditions for EBSD acquisition included an accelerating voltage of 20 kV and a working distance of 24-25 mm under low vacuum conditions (~5 Pa). EBSD patterns were indexed using HKL Technology's AZtec v3.2 software at a rate of about 40 Hz. The resulting local maps have step sizes (spatial resolution) ranging from 0.64 to 3 μm and cover areas between 0.3 to 6.5 mm^2 depending on grain size. Angular resolution is better than 0.5 degrees. The percentage of successfully indexed points within the raw maps ranged from 45.4% to 95.5%, with 60% of the EBSD maps having indexing rates greater than 70% (Table S3).

To process the EBSD data after acquisition, we used the MTEX toolbox v5.10.2 (Mainprice et al., 2015) with examples provided in the Supplementary Material. Briefly, we excluded orientation data with a Mean Angular Deviation (MAD) exceeding 1.3 and removed any wild spikes. We then segmented grains using a Voronoi decomposition algorithm with a misorientation threshold set at 10°. The Crystallographic Preferred Orientations (CPO) are depicted in upper-hemisphere contour pole figures, illustrating volume/area-weighted orientations. We quantified the CPO strength for each mineral phase using the calculated Orientation Distribution Function (ODF) and two proxies that measure the deviation of the ODF from a uniform ODF. The first proxy is the J-index, a metric that ranges from one (indicating a uniform distribution) to infinity (signifying a single orientation) (Bunge, 1969; Mainprice et al., 2015). The second proxy is the entropy of an ODF or S-index, introduced by Schaeben (1988), which ranges from zero (indicating a uniform distribution) to negative infinity for a single orientation; here, we used the absolute value of the ODF entropy, which ranges from zero to infinity.

2.2.4 Modelling seismic properties

For seismic modelling, we used the MTEX toolbox v5.10.2 and custom Python codes to compute seismic velocities and anisotropy using the Voight-Reuss-Hill (VRH) averaging method (Hill, 1952), a common approach that considers the combined effects of elastic mineral properties and their orientations within the rock (Mainprice et al., 2011). Specifically, we considered the Crystallographic Preferred Orientations (CPO) and the relative volumetric contributions of major slate-forming mineral phases, which typically include quartz, muscovite, chlorite, and plagioclase, and other phases that constitute more than 2% of the volume. The used single-crystal elastic properties are listed in Table S2 in the Supplementary Material (Brown et al., 2006; Lee et al., 2021; Mao et al., 2015; Militzer et al., 2011; Mookherjee and Mainprice, 2014; Sang and Bass, 2014; Satta et al., 2022; Waesermann et al., 2016; Wang et al., 2015).

The specific procedure for estimating seismic velocities was as follows:

1. **ODF estimation.** We estimated the Orientation Distribution Functions (ODFs) of all major mineral phases using the kernel density estimation method, as outlined by Hielscher and Schaeben (2008). The optimal kernel size was determined using the *De La Valleé Poussin* method. The ODF was calculated by taking the average orientation of each grain weighted by its corresponding area.
2. **ODF-weighted mineral elastic tensors.** The elastic tensor of each mineral phase was adjusted to account for the preferred orientation of its grains (represented by the ODF) using a Voigt approximation.
3. **Rock elastic tensor and density estimation.** The elastic tensor of the entire rock was then calculated by combining the ODF-weighted elastic tensors of each major mineral phase and its volumetric contribution normalized to 100%. This step employed the VRH (Hill) averaging method. Additionally, the overall rock density was calculated based on the densities of the individual minerals (Table S2) and their corresponding volume fractions.
4. **Seismic properties.** From this elastic tensor, we estimated the group velocities of the rock as a function of propagation direction using the Christoffel equation and the rock density. We also determined the Voigt and Reuss bounds and the VRH (Hill) average.

Transversal and axial seismic anisotropy was calculated using the expression:

$$\text{Seismic Anisotropy (\%)} = 100 \times \frac{(V_{max} - V_{min})}{(V_{max} + V_{min})/2}$$

For shear wave splitting (SWS), we used the expression:

$$Polarization\ Anisotropy\ (\%) = 100 \times \frac{(Vs1_i - Vs2_i)}{(Vs1_i + Vs2_i)/2}$$

where the subscript i refers to the $Vs1$ and $Vs2$ wave velocities at a specific propagation direction.

To characterize the elastic tensor of slates, we compared the calculated velocity models, which account for the full complexity of the crystallographic texture and has a triclinic symmetry, with simpler models that assume higher symmetries. This comparison helps in assessing the predictive power of the simpler and practical models. For this, we performed calculations to analyse the elastic tensor of slates under different symmetry assumptions (hexagonal, orthorhombic) using tensor decomposition (Browaeys and Chevrot, 2004) and polar (hexagonal) parametrizations (Anderson, 1961; Thomsen, 1986) using custom Python codes available at <https://github.com/marcoalopez/PyRockWave>. To characterize the anisotropy of the tensor, we used Thomsen's anisotropy parameters (Thomsen, 1986) and the percentage of the anisotropic component identified through the decomposition method of Browaeys and Chevrot (2004).

2.2.5 Correlations between rock fabric, CPO intensity and seismic properties

The seismic properties of slates, particularly their anisotropy, are strongly influenced by the typical arrangement of major forming minerals, with a pronounced impact related to the phyllosilicate fraction and the strength of the phyllosilicate Crystallographic Preferred Orientations (CPO). To assess how the volumetric content and the CPO of phyllosilicates impact the seismic properties of slates, we employ two proxies: the normalised J-index, as proposed in Cárdenes et al. (2021), and the normalized S-index, which is based on the orientation distribution function (ODF) entropy. Both methods integrate the ODF intensity of the different phyllosilicates weighted according to their volumetric fraction. This weighting considers only the phyllosilicates and is subsequently normalised by the total phyllosilicate fraction in the slate as follows

$$S_{norm} = (S_{Ms}\varphi_{Ms} + S_{Chl}\varphi_{Chl} + \dots) \times \varphi_{phyllosilicate}$$

$$S_{norm} = S_{phyllosilicates} \times \varphi_{phyllosilicate}$$

where φ represent area fractions and, by extension, volume fractions.

3. Results

3.1 Mineral content and microstructure

The set of slates/phylrites examined shows a wide variation in phyllosilicate fraction, ranging from 44.6 to 73.0% (Fig. 1), and *Chl* to *Ms* ratios, ranging from 0.33 to 0.81 (see Table S4a in the Supplementary Material). Among the other major phases considered, all samples contain quartz and, except for PBT,

WA, and CA, feldspar. The PBT sample is unique in that it contains significant amounts of chloritoid, comprising 11.7% of its composition (Fig. 1). Epidote is also present in small but significant fractions in two samples, the phyllite RVS and the quartzite ALT. The serpentine sample SPT primarily consists of antigorite, olivine, and diopside, with antigorite making up 49.5% of the rock's volume. This is comparable to the phyllosilicate content in slates BEI, BRA, and RVS.

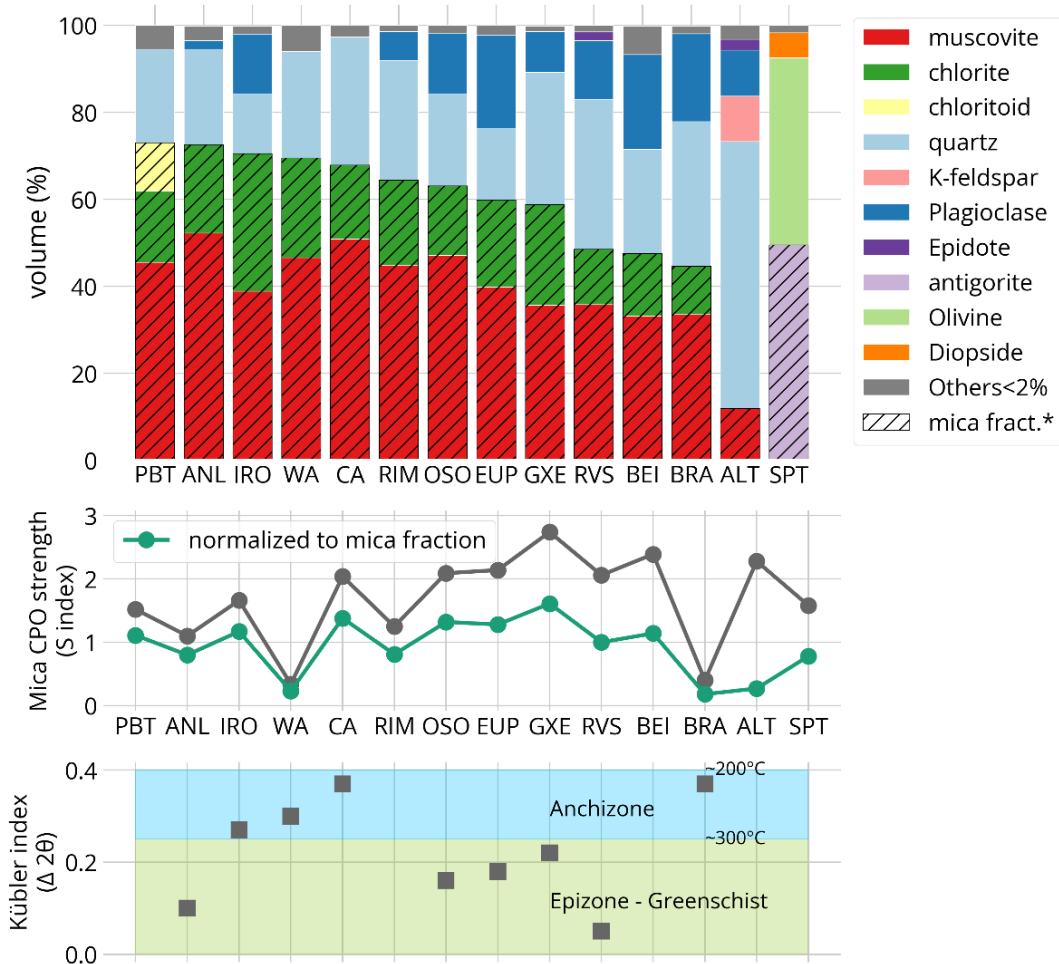


Figure 1: Mineral composition, phyllosilicate preferred orientation, and degree of metamorphism. (a) Volumetric contribution of the major mineral phases estimated using large-coverage EDX chemical maps. The hatched area represents the volumetric contribution of the phyllosilicates excepting in sample PBT where chloritoid (11.1%) is included due to its strong CPO and seismic anisotropy (see section 3.2). Sample ALT is a micaceous quartzite with 11.9% of micas and SPT is a serpentinized (49.5% antigorite) peridotite. The remaining samples are single-foliated slates with phyllosilicate content varying between 72.6 and 44.6%. Only mineral phases above 2% are considered for computing seismic properties. A table with volume fraction values is provided in the Supplementary Material as Table S4. (b) Phyllosilicate CPO intensity, measured by the S-index (entropy), both raw and normalised to the total phyllosilicate fraction (Table S5). (c) The degree of metamorphism for some of the slates was estimated using the Kübler index (illite crystallinity) (Table S1).

The microstructure of the studied slates is consistent with that of low-grade metamorphic rocks characterised by a slaty cleavage (Fig. S1 in Supplementary material). Planar minerals, such as muscovite and chlorite, are oriented and define the slaty cleavage. Non-planar minerals, such as quartz and feldspar, exhibit varying degrees of alignment with the slaty cleavage and shape fabrics. Secondary minerals (metamorphic overgrowths of phyllosilicates and quartz) can develop strongly elongated shapes parallel to the slaty cleavage. Strain shadows filled with quartz are a common occurrence. Rocks with a slightly higher metamorphic grade tend to exhibit less elongated crystal shapes. However, regardless of the degree of metamorphism and mineral elongation, all samples are characterised by exceptional cleavage development and strong mineral orientation with the slate cleavage. Serpentine is primarily composed of equidimensional (mosaic-like) olivine, dispersed diopside and antigorite with a faint interlocking texture.

3.2 Crystallographic preferred orientation

Crystallographic Preferred Orientation (CPO) patterns in phyllosilicates can be categorized into two types: those where the phyllosilicate c-axis forms a point maximum normal to the slaty cleavage, and those where the c-axis forms a girdle or semi-girdle normal to the intersection lineation, with the point maximum normal to the slaty cleavage (Fig. 2). In slates, the c-axis pole figures of muscovite and chlorite show a wide variation in intensity, from 10 to exceptionally high intensities of 80 multiples of a uniform distribution using automatic half-widths based on *De La Valleé Poussin* kernels. The S-index ODF intensity (absolute) values vary from 0.25 (Ms in WA) to 3.2 (Chl in GXE), with the S-index averages being 1.5 for muscovite and 2.0 for chlorite (Table S5).

Chloritoid in the PBT slate shows a strong CPO, with the c-axis maxima oriented normal to the slaty cleavage, forming a semi-girdle normal to the intersection lineation (Fig. 2). Despite not being a phyllosilicate, we have included chloritoid in the phyllosilicate fraction due to its strong CPO and seismic anisotropy ($V_p=22\%$, $V_s>40\%$, $SWS=46.5\%$), as these features closely mirror the CPO patterns and the pronounced anisotropic seismic features of phyllosilicates.

The silt fraction under consideration here is primarily composed of quartz and feldspar, exhibiting weak to almost random CPOs. The average J-index Orientation Distribution Function (ODF) intensity values are 1.26 for quartz and 1.12 for albite (see CPO patterns in Supplementary Material). Epidote, present in the RVS slate (2.1%) and the ALT quartzite (2.5%), developed a CPO, particularly in the slate, where the b-axis (fastest) reaches more than 6 multiples of a uniform distribution and aligns parallel to the intersection lineation (Fig. 2).

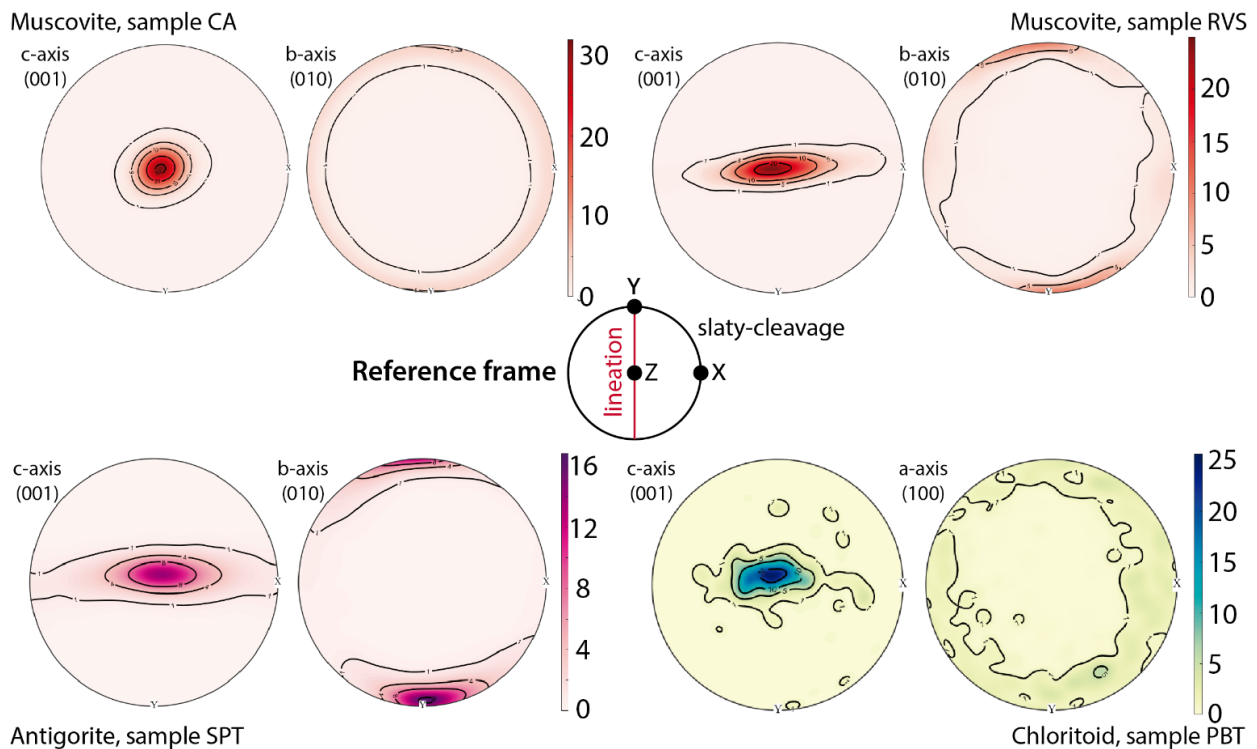


Figure 2: Typical CPO patterns in the studied samples. **Upper row:** Typical phyllosilicate (muscovite and chlorite) CPOs in slates. On the left, the c-axis forms a point maximum normal to the foliation, and the b- and a-axes are oriented randomly within the foliation (samples ALT, ANL, BEI, BRA, CA, EUP, GXE, OSO, WA). On the right, the c-axis forms a semi-girdle with a point maximum normal to the foliation and spreads perpendicular to the lineation. The a- and b-axes are oriented with the foliation, showing a complete girdle with a maximum parallel to the intersection lineation (samples RVS, PBT, RIM). **Bottom row:** On the left, the antigorite CPO pattern in the serpentinite SPT is shown, with the c-axis spreading normal to the lineation, forming a full girdle with a point maximum perpendicular to the foliation. Note that the b-axis has a clear maximum parallel to the lineation. On the right, the chloritoid CPO pattern in the PBT sample is displayed, showing a similarity with the phyllosilicate CPO patterns with the c-axis arranged normal to the foliation and the a- and b-axes oriented randomly within the foliation. Upper hemisphere equal-area projections, contours in multiples of a uniform distribution (half-widths based on population features). All CPO pole figures are provided in the Supplementary Material.

3.3 Seismic speeds and anisotropy

3.3.1 Calculated P-wave speeds and anisotropy

Calculated P-wave velocities in slates vary from 5.5 to 6.35 km/s normal to the foliation and from 6.8 to 7.8 km/s within the foliation (Figs. 3 and 4). The faster velocities consistently occur within the foliation, typically parallel to the lineation, while the slower velocities are arranged normal to the foliation, except in the RIM slate where they are oblique (Figs. 3 and 4). Notably, the PBT sample displays faster minimum and maximum P-wave velocities than the others (Fig. 3). This difference is attributed to the

presence of chloritoid (11.7% in volume) in this sample, which has a strong crystallographic orientation. This mineral has faster P-wave velocities than phyllosilicates, and its fast direction, parallel to the a-axis, aligns within the foliation plane (Fig. 2). The mica-bearing quartzite shows slower foliation-parallel P-wave velocities than the slates, while the serpentinite has much higher velocities, ranging from 7.1 to 8.5 km/s, due to its distinctive mineralogy (Figs. 3 and 4).

P-wave anisotropies in slates vary widely, ranging from 9.2 to 28.7% (Figs. 3 and 4). The quartzite shows moderate anisotropies (7.1%), while the serpentine displays values similar to those of slates with orthorhombic symmetries (e.g., RIM, RVS). In terms of anisotropy symmetry, most slates are in practice transversely isotropic (i.e., hexagonal-like), with azimuthal anisotropies varying between 0.4 and 2.2% (Fig. 4). Conversely, three slates (RVS, PBT, and RIM) show significant azimuthal anisotropies, ranging from 4.6 to 10.7% (Fig. 4), and along with the serpentinite sample, display orthorhombic-like symmetries for P-waves (Fig. 3). The RIM sample is the only slate case where the azimuthal anisotropy exceeds the axial one, at 6.4 versus 10.7% (Fig.4).

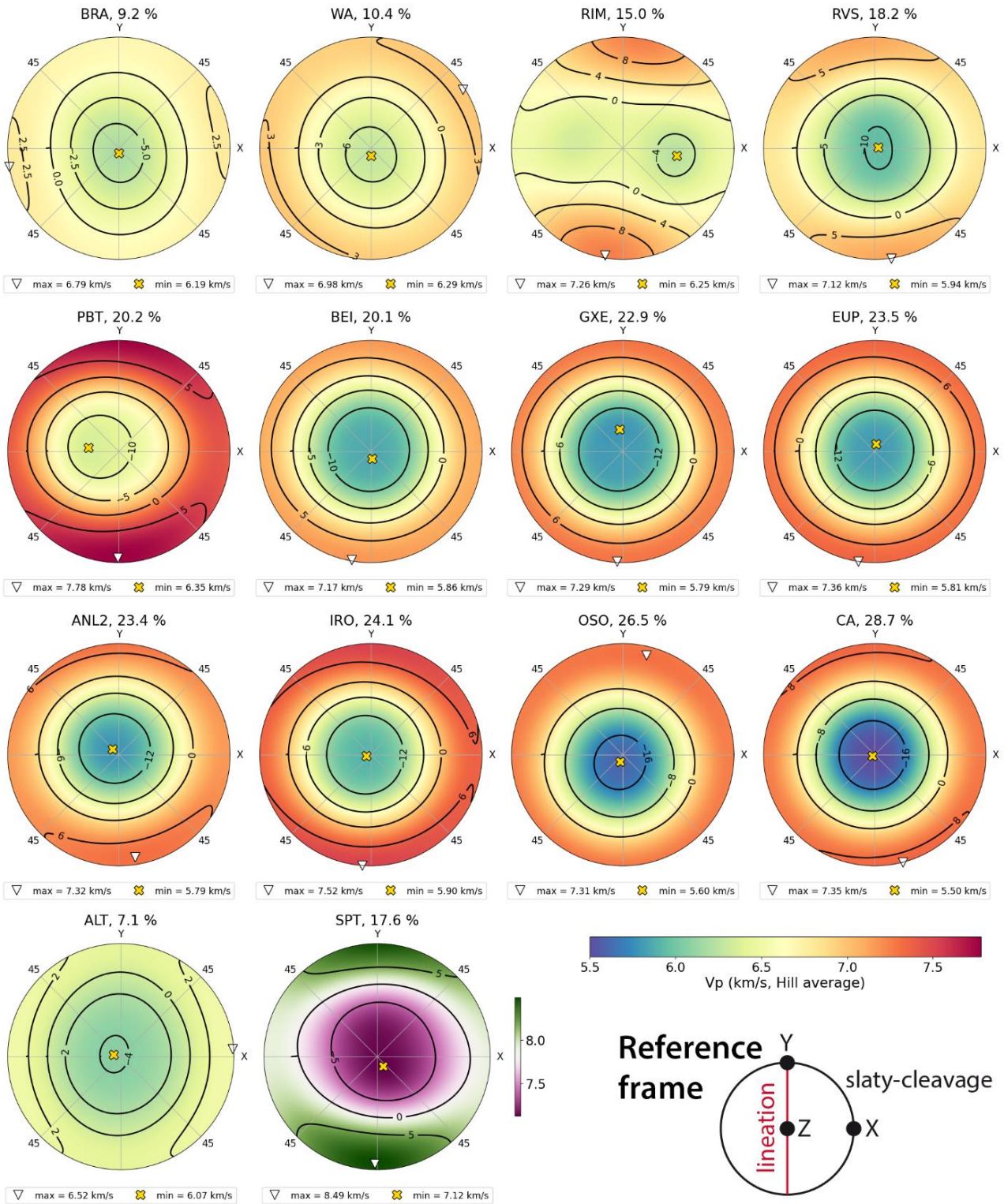


Figure 3: Calculated P-wave velocities as a function of orientation illustrated in pole figures (upper hemisphere), where the major circle represents the foliation (slaty-cleavage) plane. The colour scale representing absolute velocities is consistent across all figures except for the serpentinite SPT. Contour lines represent percentages above (positive) and below (negative) the median velocity. The sample reference and its maximum anisotropy in percent are indicated above each pole figure. The orientations of the maximum and minimum P-wave velocities are marked by white triangles and yellow crosses, respectively.

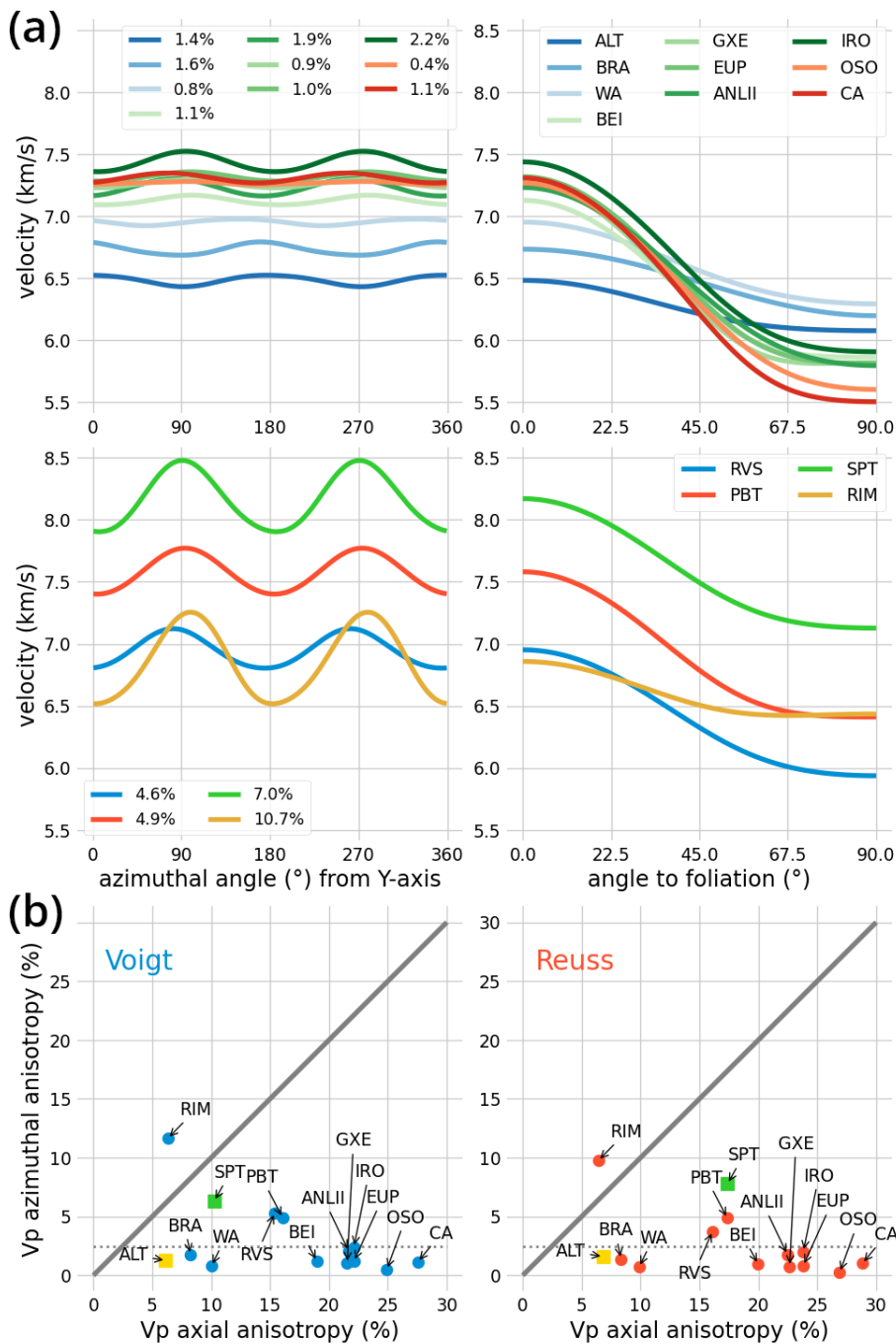


Figure 4: (a) Calculated azimuthal and axial P-wave anisotropy profiles for the different samples. The top row shows several slates and the quartzite ALT, all exhibiting low azimuthal anisotropies (< 2.2%) and approximately hexagonal symmetries. The bottom row displays slates and the serpentinite SPT (in green) with notable azimuthal anisotropies ranging from 4.6 to 10.7%. Note that the RIM slate shows higher azimuthal than axial anisotropy, indicating a clear orthorhombic component. The PBT slate (in red) is the only slate with significant amounts of chloritoid and stands out from the others by its higher P-wave velocities parallel to foliation. (b) Azimuthal versus axial anisotropy for P-wave velocities using Voigt and Reuss bounds. Blue and red dots denote slates, the yellow square denotes the micaceous quartzite, and green square denotes the serpentinite. The dotted line marks a 2.5 % azimuthal anisotropy. Most single-foliated slates have intrinsic (Voigt and Reuss) transverse anisotropies below 2.5% and a wide range of axial anisotropy, from 6 to 29%.

3.3.2 Calculated S-wave speeds and anisotropy

Calculated S1-wave (fast) velocities in slates vary from 3.5 to 4.1 km/s normal to the foliation and from 4.2 to 4.7 km/s within the foliation (Fig. 5). The faster velocities are consistently contained within the foliation, although unlike P-waves, there is no preferred direction, and the slower velocities normal to the foliation. Similarly to P-waves, the PBT slate sample exhibits significantly faster maximum S1-wave velocities than the other slates due to its chloritoid content (Fig. 5). The micaceous quartzite displays slower S1-wave velocities than the slates, while the serpentinite has higher Vs1 velocities, ranging from 4.2 to 4.8 km/s (Fig. 5). The mean (isotropic) Vp/Vs ratios show significant differences between lithologies, varying between 1.61 and 1.67 in the slates, 1.54 in the quartzite, and 1.73 in the serpentinite (see Supplementary Material).

Regarding seismic anisotropy, S1-wave anisotropies in slates vary widely, ranging from 5.0 to 27.2% (Fig. 5). In contrast, the quartzite shows very low S-wave anisotropy (1.6%), and the serpentine exhibits values significantly lower (3.3%) than those of the slates. In terms of anisotropy symmetry, all slates except the RIM sample are effectively transversely isotropic (i.e., hexagonal-like) (Fig. 6).

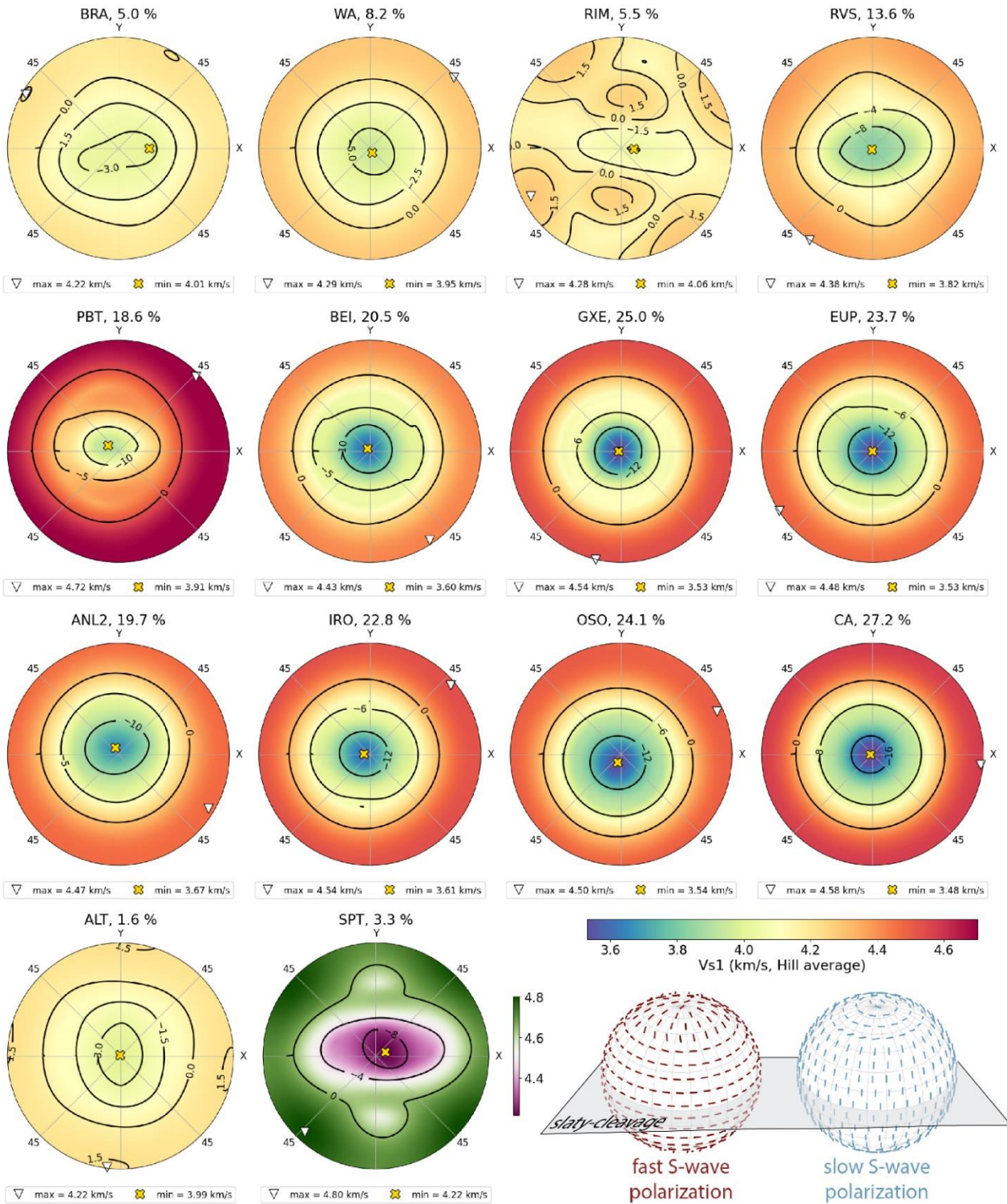


Figure 5: Calculated fast S-wave velocities as a function of orientation illustrated in pole figures, where the major circle represents the foliation plane. The colour scale representing absolute velocities is consistent across all figures except for the serpentinite SPT. Contour lines represent percentages above (positive) and below (negative) the median velocity. The sample reference and its maximum anisotropy in percent are indicated above each pole figure. The orientations of the maximum and minimum fast S-wave velocities are marked by white triangles and yellow crosses, respectively. Bottom right corner: 3D visualization of the typical of fast and slow S-waves polarization in slates. Pole figures of fast and slow S-wave velocities with polarizations are provided in the Supplementary Material.

3.3.3 Calculated polarization anisotropy: shear-wave splitting

In slates, the calculated polarization anisotropy varies from almost negligible values, typically at 45 degrees to the slaty cleavage, to maximum polarization values ranging widely from 5.8 to 27.8% within the foliation plane (Fig. 6). Quartzite and serpentinite exhibit similar polarization anisotropy patterns to slates, with maximum anisotropy for quartzite at the lower end of the range (6.4%) established for slates, and an intermediate anisotropy value within the range (15%) for serpentinite. The polarization anisotropy for normal and near-normal to the foliation incidences is very small or negligible for most cases, in agreement with a polar-anisotropic medium. Only the slate RIM, and to a lesser extent the serpentinite, have measurable near-vertical SWS values, close to 10% in the RIM slate. This observation aligns with the common assumption that when SWS is observed at near-vertical incidences, there must be corresponding azimuthal effects on P-wave velocities (Thomsen and Anderson, 2015).

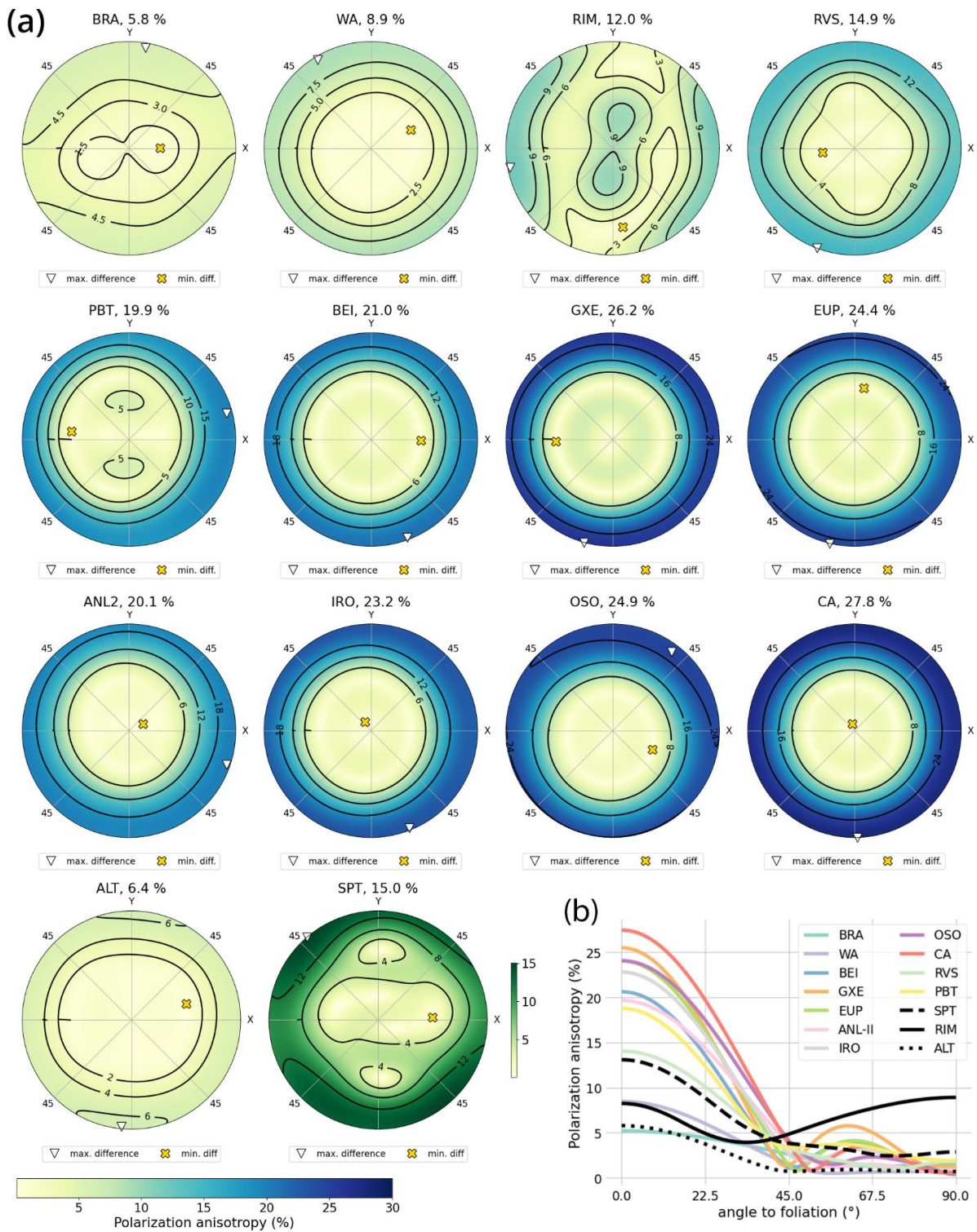


Figure 6: (a) Calculated polarization anisotropy (shear-wave splitting) in percent as a function of orientation illustrated in pole figures, where the major circle represents the foliation plane. The colour scale is consistent across all figures except for the serpentinite. The reference of the sample and its maximum polarization anisotropy are shown above each pole figure. The orientations of the maximum and minimum polarization anisotropy are indicated by white triangles and yellow crosses, respectively. Note that the maximum polarization always lies within or very close to the foliation plane. (b) Polarization anisotropy axial profiles. Minimum polarizations are at $\sim 45^\circ$ and normal to the foliation, except for the RIM slate (black solid line) and the serpentinite SPT (black dashed line).

3.3.4 Calculated elastic constants: variability and tensor decomposition

The anisotropic part of the calculated elastic tensors after decomposition varies from 8.3% (BRA) to 22.4% (OSO) in slates, smaller (7.2%) for the quartzite, and within the established range (18.5%) for the serpentinite (Table S6 in Supplementary Material). Analysing the symmetry of the anisotropic part of the tensor, in slates, the majority (>70%) corresponds to a hexagonal symmetry, with most of them having a limited (<10%) orthorhombic component (Fig. 7a). Outside of this trend are the PBT slate and the serpentinite, with ~20% orthorhombic and ~20% other lower symmetries components, and the RIM slate, which is the only one where the orthorhombic component dominates, although all components are present and fairly balanced (36-39-26) (Fig. 7a). The full calculated elastic constants using the VRH approach are provided in Table S7.

Regarding the strength of the correlation between the different elastic components in the transversely isotropic slates, linear correlations are strong between the diagonal components, especially between C66 and C11 (Pearson's coefficient of 0.95), C66 and C44 (-0.89), C33 and C44 (0.88), and C66 and C33 (-0.84) (Fig. 7b). In contrast, the correlation between C11 and C33 is weaker, and the off-diagonal component C13 lacks correlation with the diagonal components (Fig. 7b).

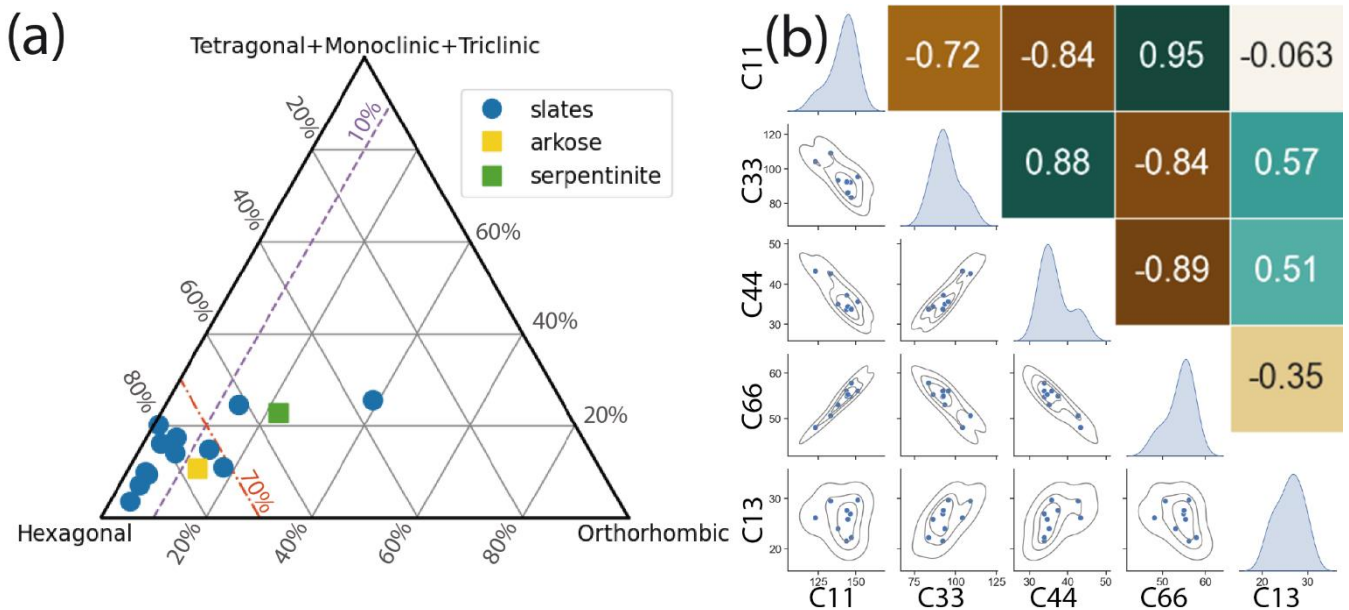


Figure 7: (a) Decomposition analysis of the calculated elastic tensors illustrating the proportion of hexagonal to orthorhombic to lower symmetry components for all the samples. The purple dashed line indicates the <10% orthorhombic symmetry threshold, while the orange dash-dotted line indicates the >70% hexagonal symmetry threshold. (b) Pair plot (bottom left corner) showing the correlations between the different independent elastic constants in transversely isotropic slates, accompanied by an annotated heat map (top right corner) with corresponding standard Pearson linear correlation coefficients.

Table 1: Reference values for the five independent elastic constants calculated for slates with transverse isotropy and some anisotropy elastic tensor parameters. CV (%) denotes coefficient of variation (variance respect to the mean in percentage) at 1-sigma level.

Sample	C11	C33	C44	C66	C13	anis. (%)	epsilon	delta	gamma
BRA	122.9	104.1	43.3	48.0	26.2	6.2	0.090	0.089	0.055
WA	133.0	109.0	42.7	50.6	29.5	8.0	0.110	0.057	0.092
BEI	137.9	93.4	35.1	53.0	24.0	16.0	0.239	0.009	0.256
GXE	143.7	92.3	33.7	56.1	21.6	18.5	0.279	-0.034	0.333
EUP	146.1	92.2	33.8	54.8	26.9	18.0	0.293	0.025	0.311
ANL-II	144.1	92.6	37.3	55.0	27.6	16.1	0.278	0.113	0.237
IRO	151.3	95.5	35.6	56.1	29.7	17.4	0.292	0.061	0.287
OSO	144.7	86.1	34.5	55.3	25.9	18.5	0.340	0.111	0.300
CA	147.0	83.4	33.8	57.8	22.2	20.4	0.381	0.081	0.355
mean	141.2	94.3	36.6	54.1	26				
CV (%)	6.1	8.5	10.3	5.7	11.1				

In Table 1, we provide as reference values the five independent elastic constants calculated for slates with transverse isotropy seismic properties using the elastic tensor VRH decomposed into its isotropic and hexagonal components (i.e. ignoring all the parts with symmetries lower than hexagonal). The anisotropic Thomsen parameters and the anisotropic fraction (in percent) of the tensor are also given.

4. Discussion

In our study, most slate samples displayed the characteristic quasi-transverse isotropy commonly observed in rocks of this type. Specifically, we found that all but three of the samples exhibited azimuthal P-wave anisotropies ranging from 0.4 to 2.2%. The variability in axial anisotropy was notable, with Vp anisotropy ranging from 6 to 29%, Vs1 anisotropy ranging from 5 to 27%, and polarization anisotropy (SWS) ranging from 5.8 to 27.8%. We hypothesize that slates with higher azimuthal anisotropies, falling between 4.6 and 10.7%, and those exhibiting orthorhombic or minor symmetry components may be attributed to incipient crenulation of the slaty cleavage. This interpretation is supported by the alignment of maximum axial P-wave anisotropy parallel to the intersection lineation, a feature consistent with this hypothesis. Similar phenomena, characterized by c-axis semi-girdles normal to the lineation, have been previously documented in single-foliated and crenulated slates by other researchers (Naus-Thijssen et al., 2011a; Wenk et al., 2020).

When comparing the seismic features of slates to those of the reference micaceous quartzite, several distinctions and similarities emerge. Both the P- and S-wave velocities of the quartzite fall within the range observed for the slates. However, the quartzite displays considerably lower maximum P-wave anisotropies and significantly reduced S1-wave anisotropies, attributed to its lower mica content.

Moreover, a substantial dissimilarity lies in the V_p/V_s ratio, which is notably lower in the quartzite (1.54) compared to the range observed in the slates (1.61-1.67). The serpentinite exhibits seismic anisotropy values well within the calculated range for slates, resembling those of slates with significant orthorhombic symmetry components. However, the absolute seismic velocities in serpentinite are much higher, exceedingly well above 8 km/s in the directions parallel to the foliation. Additionally, the V_p/V_{s1} values are markedly higher (1.73) in the serpentinite, and its seismic fingerprint do not align with the typical transverse isotropy observed in most slates.

The linear correlations found in transversely isotropic slates between the various elastic constants forming the diagonal of the tensor mirror those found in shales (Horne, 2013). However, our dataset indicates a lack of linear relationship between the off-diagonal C13 elastic constant and all the others. These correlations suggest that it would be theoretically feasible to estimate the five elastic constants needed to fully define hexagonal symmetry from just two measurements: one diagonal component, optimally C66, and the off-diagonal component C13. Despite the similarities between shale and slate in this regard, the lack of correlation between the off-diagonal component C13 and the other components makes the model proposed by Sayers and de Boer (2020) for shale, where the remaining constants are calculated only from the C33, inappropriate for slate at conditions where intrinsic factors govern the elastic response. These findings underline the optimal strategy for modelling the limits of the intrinsic seismic properties of single-foliated slates, which involves taking the average and typical variance values of the C66 and C13 elastic constants given in Table 1 and extrapolating the others from these.

4.1 Are polar models (i.e. "transverse isotropy") good enough for predicting anisotropy in single-foliated slates?

Using the calculated VRH elastic tensors, we tested the predictive power of three different polar parameterizations for single-foliated slates in terms of anisotropy. For this analysis, we ignored three slates (RVS, PBT, and RIM) and the serpentinite SPT, as they all have significant non-hexagonal components, and the micaceous quartzite (ALT).

Comparing the anisotropy values predicted by the different polar parameterizations with those estimated with the VRH approach (Table 2), the weak polar anisotropy (Thomsen) model is the least suitable of the three, with errors in excess of 10% in most cases, probably because of the strong axial anisotropy of single-foliated slates. On the other hand, the Anderson parameterization (Anderson, 1961) gives better predictions, particularly when using along with the decomposed hexagonal elastic tensor instead of the values from the full (21 components) calculated VRH tensor. The estimation of axial anisotropy by the tensor decomposition plus Anderson parameterization yield practically identical

results for P-waves (errors $\sim 0.1\%$), very good estimates for polarization anisotropy (average of 1.1%), and slightly worse for S-waves, with an average of 3.4% although it exceeds 15% in one case (see sample BRA in Table 2). We therefore conclude that the Anderson parametrization together with the decomposition of the VRH tensor into its hexagonal part is the best predictive model of the three polar parameterizations for single-foliated slates.

Table 2: Percentage error in the estimation of maximum axial and polarisation (SWS) anisotropy compared to the estimate using the Christoffel-based approach. Mean values are reported as absolute errors.

Sample	Vp (%)	Vs1 (%)	SWS (%)	Vp (%)	Vs1 (%)	SWS (%)	Vp (%)	Vs1 (%)	SWS (%)
	Thomsen model			Anderson model			decomposition + Anderson model		
BRA	14.7	31.6	13.5	9.7	28.0	9.6	0.02	15.94	0.00
WA	7.0	11.3	5.9	1.8	6.7	1.2	0.01	4.42	-1.18
BEI	6.7	13.4	11.7	-2.5	2.8	1.0	-0.02	1.55	0.00
GXE	8.4	17.8	14.5	-2.1	4.5	1.6	-0.03	2.33	-0.39
EUP	8.8	15.7	13.3	-2.0	3.3	1.2	0.00	1.81	0.00
ANLii	5.9	8.7	5.6	-4.2	-0.7	-3.6	-0.10	1.11	-2.03
IRO	5.5	14.8	11.8	-4.7	3.2	0.4	-0.10	1.83	-0.88
OSO	11.9	12.0	8.7	-0.7	0.4	-2.5	-0.23	0.12	-2.90
CA	11.6	16.0	14.6	-1.7	2.2	0.7	-0.02	-1.69	-2.91
mean	8.9	15.7	11.1	3.3	5.7	2.4	0.1	3.4	1.1

In view of these results, we propose that the use of the Anderson parameterization should be sufficient for the modelling and averaging of intrinsic seismic properties in single-foliated slates and shales. This model should be particularly advantageous when using deep and machine learning strategies, as the Anderson parameterization is much faster than the Christoffel-based procedure. Therefore, for modelling single-foliated slates, we provide in Table 1 a set of five reference elastic constants with their typical variance calculated from the decomposition of the tensor into its isotropic + hexagonal parts. The full 21 elastic constants without decomposition are given in the Supplementary Material for comparison (Table S7).

4.2 Are phyllosilicate content and ODF intensity good predictors of seismic properties and vice versa?

The plots depicted in Figure 8 reveal a robust positive linear correlation between the S-norm proxy proposed here and both the axial (V_p and V_{s1}) and maximum polarization anisotropy in the slates. Linear models of the form $y = mx$ where y represents the S-norm, x denotes the anisotropy, and m symbolized the slope, explain more than 0.96 of the data in all cases. We limited b to equal 0 since, theoretically, a zero S-norm value (indicating no preferred orientation) should yield a null anisotropy

value when extrinsic factors are ignored. Accordingly, the Vp, Vs, and polarization anisotropy of the slates can be predicted from the proxy with a confidence interval at the 2-sigma level of $\pm 12\%$ in axial anisotropy and $\pm 8.5\%$ in polarization anisotropy. While these relationships similarly apply to the J-norm proxy, the predictive power of the S-norm is superior (refer to Supplementary Material), prompting our focus solely on this proxy.

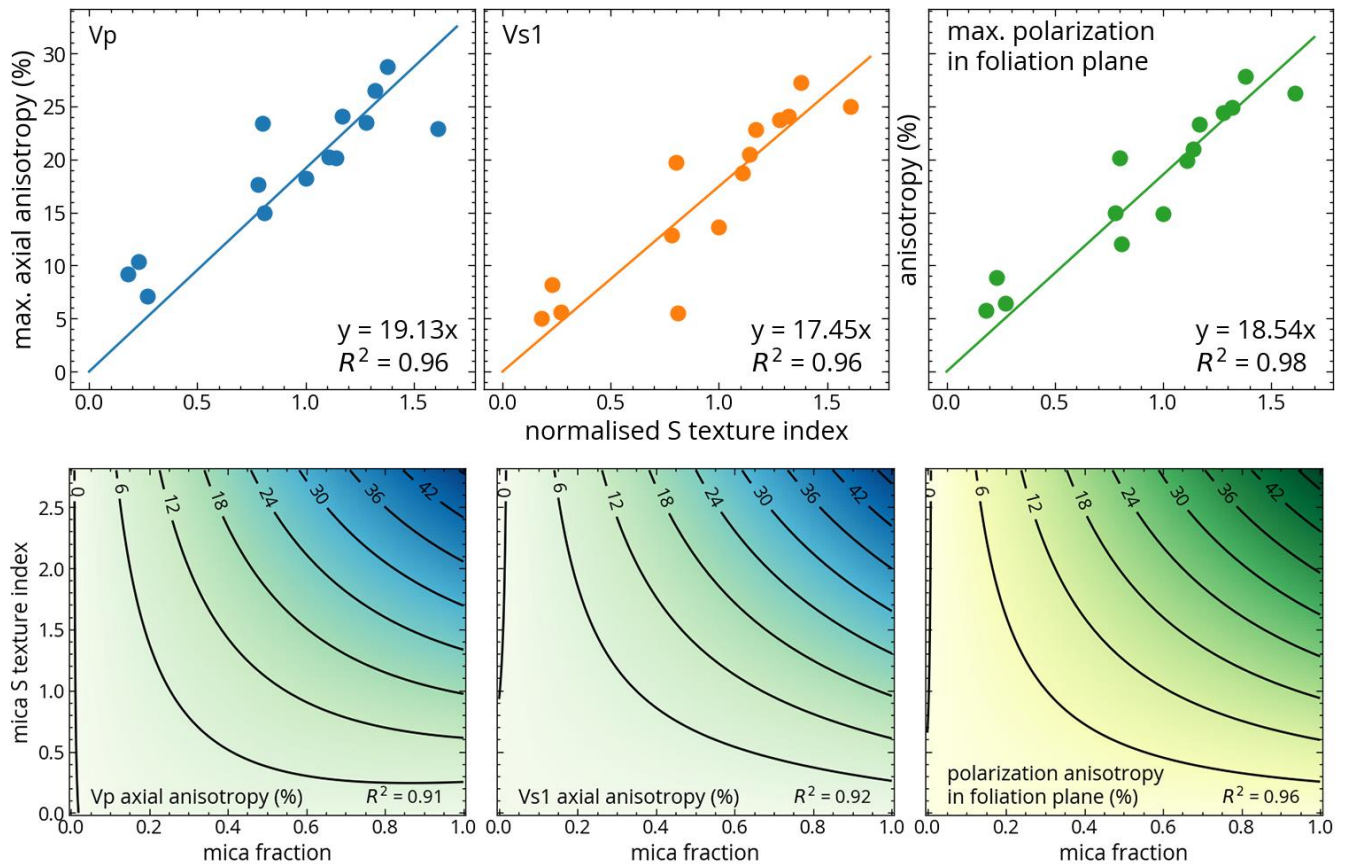


Figure 8: Anisotropy model for transversely isotropic single-foliated slates. Upper row: Linear correlation between the S-norm proxy introduced here and different types of axial anisotropy including Vp, Vs1, and polarization (shear-wave splitting) anisotropies. Bottom row: Phyllosilicate fraction vs. phyllosilicate ODF texture strength (S-index) as a function of Vp, Vs1, and polarization anisotropies in percentage. The correlation was estimated by fitting a polynomial equation using a least-squares fitting algorithm (see Supplementary Material for details).

The relationship between seismic anisotropy and phyllosilicate fraction alone is weak, whereas there is a positive correlation between the phyllosilicate ODF intensity and anisotropy, although not as robust as the correlation with the S-norm proxy. This suggests that, of the intrinsic factors, the intensity of the crystallographic orientation of the phyllosilicates has the strongest influence on the seismic anisotropy in slates playing the phyllosilicate/silt fraction a secondary role.

Reverse prediction, i.e. using axial or polarization anisotropy values measured in geophysical surveys to estimate phyllosilicate fraction or CPO intensity, is theoretically possible. However, as the S-norm

proxy involves two independent variables, the phyllosilicate ODF strength and the phyllosilicate/silt fraction, the calculation gets more complicated as it requires the assumption of a characteristic phyllosilicate ODF intensity or phyllosilicate fraction due to the additional degree of freedom (Fig. 8b). The plots in Figure 8b show that in some cases it is possible to derive practical information about the phyllosilicate fraction from a measurement of axial or polarization anisotropy without making assumptions about the CPO intensity of the phyllosilicates or just by assuming a rough value. For example, if we measure anisotropies equal to or greater than 24%, as is the case for the CA and OSO samples, we can infer that the slates contain phyllosilicate fractions greater than ~50%, regardless of the CPO intensity. Note that this inference assumes that the ranges of CPO phyllosilicate intensity lie within the range shown in Figure 8b (phyllosilicate S-index < 2.7) and that extrinsic factors are not significant.

4.2.1 Model limitations

There are several limitations to this model. Firstly, to establish this relationship we have ignored the effect of extrinsic factors such as the effect of porosity, shape fabrics or the interplatelet medium elastic properties. It is known from Vp versus pressure curves that extrinsic factors are non-negligible in slates at confining pressures below 150 MPa (~6 km) (e.g. Guo et al. 2014). It is also known that in the case of slates, extrinsic factors cause an increase in aggregate anisotropy, indeed at very low pressures and under dry conditions some of the slate modelled here have anisotropies up to 66% in Vp (Cárdenes et al., 2021), see also figure S3 in Supplementary Material. Thus, for slates at shallower than ~6 km in the crust, it would be necessary to account for these extrinsic factors to correct the anisotropy estimates. In any case, even with this limitation the model is fully valid to determine a minimum anisotropy and maximum absolute wave speeds based on intrinsic (ODF strength and phyllosilicate content) properties.

Another limiting extrinsic factor, acting on a much larger scale than the previous ones, is the possible presence of layering finer than the seismic wavelength used. This factor is important because layering is common in sedimentary basins and its seismic effects are independent of the confining pressure acting on rocks. Simplifying, layering (parallel to the Earth's surface) will increase the axial anisotropy of the rock, as the most common sedimentary rocks alternating with slates, such as sandstones or limestones, have lower seismic velocities and will slow down wave velocities normal to layering. Similarly, the development of tectonic banding, differentiation between quartz-rich and phyllosilicate-rich bands, is expected to enhance anisotropic behaviour. In any case, the seismic effect and magnitude produced by fine layering in slate belts, and all the variables that characterize layering, need to be studied in the future. It is also noteworthy that in most cases the slaty cleavage in slates belts is expected to arrange perpendicular or at a high angle to the earth's surface.

The last limiting factor relates to the fact that the samples used here are essentially single-foliated, and slates tend to develop crenulations or kink bands in slate belts. Such microstructures will change the symmetry of the elastic tensor away from a hexagonal symmetry towards an orthorhombic or lower symmetries, in a similar way to the RIM sample studied here or those studied by Naus-Thijssen et al. (2011a). The effect of these microstructures in the model is a topic that requires further investigation. Interestingly, the slightly orthorhombic (RVS and PBT) and more orthorhombic (RIM and SPT serpentinite) samples studied here fit the model estimating maximum anisotropies, suggesting that the S-norm proxy does not lose its predictive power in such cases.

5. Conclusions and future prospective

We have used a comprehensive set of high-quality single-foliated slates to calculate their typical seismic properties (absolute velocities, anisotropy, and correlations between elastic constants) using the VRH averaging method. With these data, we have investigated which polar models (transverse isotropy) give the best predictions and whether it is possible to predict the intrinsic maximum anisotropy of these rocks from a single proxy. We found that axial and polarization anisotropy can be reliably estimated in single-foliated slates with an error of $\sim 10\%$ based on a single proxy, named the S-norm, which accounts for the ODF strength and volumetric fraction phyllosilicates and chloritoid. We have also found that a polar parameterization based on a combination of elastic tensor decomposition and the Anderson equations gives seismic anisotropy predictions similar to the Christoffel equation with errors better than 3% (better than 0.3% for V_p). These models should be practical for investigating slate belts at depths greater than 6 km (~ 150 MPa), but also at shallower depths as they allow the minimum expected seismic anisotropy to be calculated from their intrinsic properties.

The main limitation of the models proposed here is that they only consider intrinsic factors, and under certain circumstances, it will be necessary to include corrections for extrinsic factors (e.g., oriented fractures/porosity and layering) and/or consider the role and degree of crenulation or kink-bands development. The implementation of more sophisticated models considering these factors remains to be done.

Acknowledgements

This work was supported by the Government of the Principality of Asturias, the European Union (Marie-Curie COFUND) and the Foundation for the Promotion of Applied Scientific Research and Technology in Asturias (FICYT) (Spain) (Grant numbers SV-PA-21-AYUD/2021/57163, PA-18-ACB17-11) under the "*Plan de Ciencia, Tecnología e Innovación 2018–2022*" of Asturias (PCTI-Asturias).

References

- Acevedo, J., Fernández-Viejo, G., Llana-Fúnez, S., López-Fernández, C., Olona, J., Pérez-Millán, D., 2022. Radial anisotropy and S-wave velocity depict the internal to external zone transition within the Variscan orogen (NW Iberia). *Solid Earth* 13, 659–679. <https://doi.org/10.5194/se-13-659-2022>
- Anderson, D.L., 1961. Elastic wave propagation in layered anisotropic media. *Journal of Geophysical Research* (1896-1977) 66, 2953–2963. <https://doi.org/10.1029/JZ066i009p02953>
- Asaka, M., Holt, R.M., Bakk, A., 2021. Rock Physics Model of Shale: Predictive Aspect. *Journal of Geophysical Research: Solid Earth* 126, e2021JB021993. <https://doi.org/10.1029/2021JB021993>
- Bachmann, F., Hielscher, R., Schaeben, H., 2010. Texture Analysis with MTEX – Free and Open Source Software Toolbox. *Solid State Phenomena* 160, 63–68. <https://doi.org/10.4028/www.scientific.net/SSP.160.63>
- Barruol, G., Mainprice, D., 1993. A quantitative evaluation of the contribution of crustal rocks to the shear-wave splitting of teleseismic SKS waves. *Physics of the Earth and Planetary Interiors* 78, 281–300. [https://doi.org/10.1016/0031-9201\(93\)90161-2](https://doi.org/10.1016/0031-9201(93)90161-2)
- Barruol, G., Souriau, A., Vauchez, A., Diaz, J., Gallart, J., Tubia, J., Cuevas, J., 1998. Lithospheric anisotropy beneath the Pyrenees from shear wave splitting. *Journal of Geophysical Research: Solid Earth* 103, 30039–30053. <https://doi.org/10.1029/98JB02790>
- Guo, B.-B., Wang, H.-C., Zhao, W.-H., Ji, S., Sun, D.-S., Li, A. W., Long, C.-X. 2014. Analysis of Seismic Anisotropy of the Typical Slate from the Gaoligong Mountains, Yunnan Province, China. *Chinese Journal of Geophysics* 57, 154–165. <https://doi.org/10.1002/cjg2.20093>
- Browaey, J.T., Chevrot, S., 2004. Decomposition of the elastic tensor and geophysical applications. *Geophysical Journal International* 159, 667–678. <https://doi.org/10.1111/j.1365-246X.2004.02415.x>
- Brown, J.M., Abramson, E.H., Angel, R.J., 2006. Triclinic elastic constants for low albite. *Phys Chem Minerals* 33, 256–265. <https://doi.org/10.1007/s00269-006-0074-1>
- Bunge, H.-J., 1982. *Texture Analysis in Materials Science: Mathematical Methods*. Elsevier.
- Cárdenes, V., Lopez-Sanchez, M.A., Barou, F., Olona, J., Llana-Fúnez, S., 2021. Crystallographic preferred orientation, seismic velocity and anisotropy in roofing slates. *Tectonophysics* 808, 228815. <https://doi.org/10.1016/j.tecto.2021.228815>
- Christensen, N.I., Mooney, W.D., 1995. Seismic velocity structure and composition of the continental crust: A global view. *J. Geophys. Res.* 100, 9761–9788. <https://doi.org/10.1029/95JB00259>
- Díaz, J., Gallart, J., Ruiz, M., Pulgar, J.A., López-Fernández, C., González-Cortina, J.M., 2006. Probing seismic anisotropy in North Iberia from shear wave splitting. *Physics of the Earth and Planetary Interiors, Continental Anisotropy* 158, 210–225. <https://doi.org/10.1016/j.pepi.2005.12.011>
- Fettes, D., Desmons, J., 2011. *Metamorphic Rocks: A Classification and Glossary of Terms*. Cambridge University Press.
- Hielscher, R., Schaeben, H., 2008. A novel pole figure inversion method: specification of the MTEX algorithm. *J Appl Cryst* 41, 1024–1037. <https://doi.org/10.1107/S0021889808030112>
- Hill, R., 1952. The Elastic Behaviour of a Crystalline Aggregate. *Proc. Phys. Soc. A* 65, 349–354. <https://doi.org/10.1088/0370-1298/65/5/307>

- Hornby, B.E., 1998. Experimental laboratory determination of the dynamic elastic properties of wet, drained shales. *Journal of Geophysical Research: Solid Earth* 103, 29945–29964. <https://doi.org/10.1029/97JB02380>
- Horne, S.A., 2013. A statistical review of mudrock elastic anisotropy. *Geophysical Prospecting* 61, 817–826. <https://doi.org/10.1111/1365-2478.12036>
- Johnston, J.E., Christensen, N.I., 1995. Seismic anisotropy of shales. *Journal of Geophysical Research: Solid Earth* 100, 5991–6003. <https://doi.org/10.1029/95JB00031>
- Lee, J., Mookherjee, M., Kim, T., Jung, H., Klemd, R., 2021. Seismic Anisotropy in Subduction Zones: Evaluating the Role of Chloritoid. *Front. Earth Sci.* 9. <https://doi.org/10.3389/feart.2021.644958>
- Lonardelli, I., Wenk, H.-R., Ren, Y., 2007. Preferred orientation and elastic anisotropy in shales. *Geophysics* 72, D33–D40. <https://doi.org/10.1190/1.2435966>
- Mainprice, D., Bachmann, F., Hielscher, R., Schaeben, H., 2015. Descriptive tools for the analysis of texture projects with large datasets using MTEX: strength, symmetry and components. Geological Society, London, Special Publications 409, 251–271. <https://doi.org/10.1144/SP409.8>
- Mainprice, D., Hielscher, R., Schaeben, H., 2011. Calculating anisotropic physical properties from texture data using the MTEX open-source package. Geological Society, London, Special Publications 360, 175–192. <https://doi.org/10.1144/SP360.10>
- Mao, Z., Fan, D., Lin, J.-F., Yang, J., Tkachev, S.N., Zhuravlev, K., Prakapenka, V.B., 2015. Elasticity of single-crystal olivine at high pressures and temperatures. *Earth and Planetary Science Letters* 426, 204–215. <https://doi.org/10.1016/j.epsl.2015.06.045>
- Militzer, B., Wenk, H.-R., Stackhouse, S., Stixrude, L., 2011. First-principles calculation of the elastic moduli of sheet silicates and their application to shale anisotropy. *American Mineralogist* 96, 125–137. <https://doi.org/10.2138/am.2011.3558>
- Mookherjee, M., Mainprice, D., 2014. Unusually large shear wave anisotropy for chlorite in subduction zone settings. *Geophysical Research Letters* 41, 1506–1513. <https://doi.org/10.1002/2014GL059334>
- Naus-Thijssen, F.M.J., Goupee, A.J., Johnson, S.E., Vel, S.S., Gerbi, C., 2011a. The influence of crenulation cleavage development on the bulk elastic and seismic properties of phyllosilicate-rich rocks. *Earth and Planetary Science Letters* 311, 212–224. <https://doi.org/10.1016/j.epsl.2011.08.048>
- Naus-Thijssen, F.M.J., Goupee, A.J., Vel, S.S., Johnson, S.E., 2011b. The influence of microstructure on seismic wave speed anisotropy in the crust: computational analysis of quartz-muscovite rocks. *Geophysical Journal International* 185, 609–621. <https://doi.org/10.1111/j.1365-246X.2011.04978.x>
- Sang, L., Bass, J.D., 2014. Single-crystal elasticity of diopside to 14 GPa by Brillouin scattering. *Physics of the Earth and Planetary Interiors, High-Pressure Research in Earth Science: Crust, Mantle, and Core* 228, 75–79. <https://doi.org/10.1016/j.pepi.2013.12.011>
- Satta, N., Grafalha Morales, L.F., Criniti, G., Kurnosov, A., Boffa Ballaran, T., Speziale, S., Marquardt, K., Capitani, G.C., Marquardt, H., 2022. Single-Crystal Elasticity of Antigorite at High Pressures and Seismic Detection of Serpentinized Slabs. *Geophysical Research Letters* 49, e2022GL099411. <https://doi.org/10.1029/2022GL099411>

- Sayers, C. m., 2005. Seismic anisotropy of shales. *Geophysical Prospecting* 53, 667–676. <https://doi.org/10.1111/j.1365-2478.2005.00495.x>
- Sayers, C.M., den Boer, L.D., 2020. Effect of variations in microstructure on clay elastic anisotropy. *GEOPHYSICS* 85, MR73–MR82. <https://doi.org/10.1190/geo2019-0374.1>
- Schaeben, H., 1988. Entropy Optimization in Texture Goniometry. I. Methodology. *physica status solidi (b)* 148, 63–72. <https://doi.org/10.1002/pssb.2221480104>
- Thomsen, L., 1986. Weak elastic anisotropy. *GEOPHYSICS* 51, 1954–1966. <https://doi.org/10.1190/1.1442051>
- Thomsen, L., Anderson, D.L., 2015. Weak elastic anisotropy in global seismology, in: Foulger, G.R., Lustrino, M., King, S.D. (Eds.), *The Interdisciplinary Earth: A Volume in Honor of Don L. Anderson*. Geological Society of America, p. 0. [https://doi.org/10.1130/2015.2514\(04\)](https://doi.org/10.1130/2015.2514(04))
- Waeselmann, N., Brown, J.M., Angel, R.J., Ross, N., Zhao, J., Kaminsky, W., 2016. The elastic tensor of monoclinic alkali feldspars. *American Mineralogist* 101, 1228–1231. <https://doi.org/10.2138/am-2016-5583>
- Wang, J., Mao, Z., Jiang, F., Duffy, T.S., 2015. Elasticity of single-crystal quartz to 10 GPa. *Phys Chem Minerals* 42, 203–212. <https://doi.org/10.1007/s00269-014-0711-z>
- Wenk, H.-R., Yu, R., Cárdenes, V., Lopez-Sanchez, M.A., Sintubin, M., 2020. Fabric and anisotropy of slates: From classical studies to new results. *Journal of Structural Geology* 138, 104066. <https://doi.org/10.1016/j.jsg.2020.104066>
- Yurikov, A., Pervukhina, M., Beloborodov, R., Delle Piane, C., Dewhurst, D.N., Lebedev, M., 2021. Modeling of Compaction Trends of Anisotropic Elastic Properties of Shales. *Journal of Geophysical Research: Solid Earth* 126, e2020JB019725. <https://doi.org/10.1029/2020JB019725>